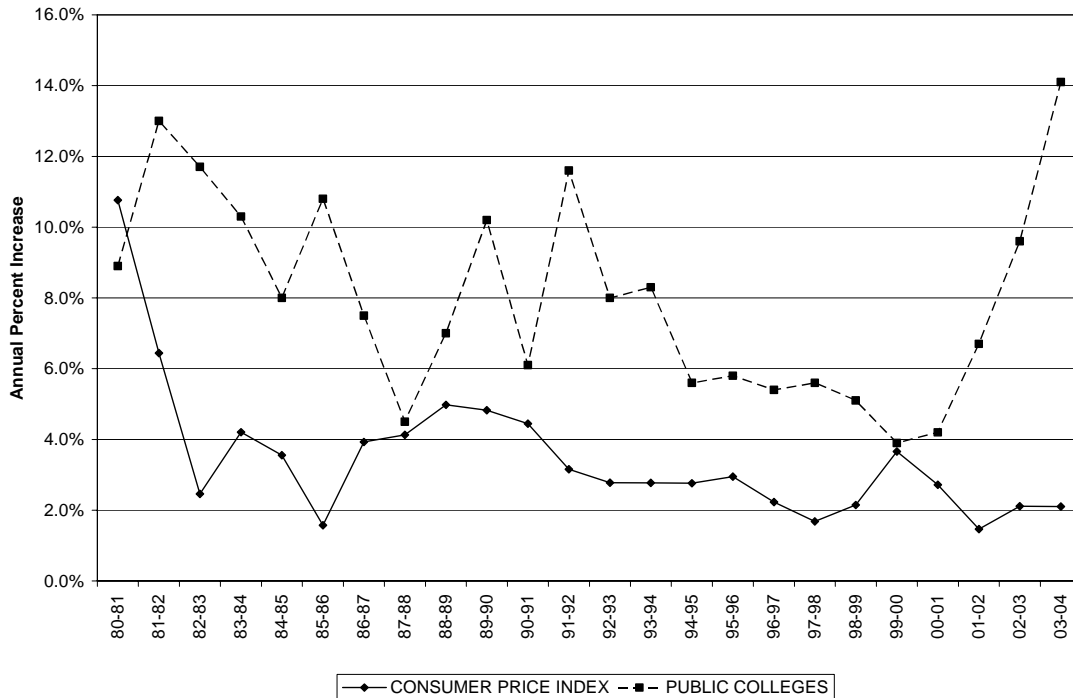


## 2.0 TUITION AND FEES

### 2.1 National Trends

**Changes in College Tuition  
Compared With Consumer Price Index**



Concerns over the rising costs of attending colleges and universities have heightened in the past few years and are influencing state policies regarding tuition and fees. Since 1981-82 the average cost of attending colleges and universities has increased faster than the rate of inflation as measured by the Consumer Price Index (CPI). As indicated by the chart above, this trend has strengthened markedly since 2000-01 as states have reduced general fund appropriations for public higher education in response to declining tax revenues and increased tuition to compensate.

Factors involved in rising costs for higher education include:

- Reduction in state general fund support,
- Faculty salaries rising faster than general inflation,
- Relative decline in federal student grant programs,
- High cost of institutionally funded financial aid,
- Migration of students from low to high cost disciplines,
- Administrative support and governmentally imposed requirements have risen,
- The need to keep pace with new technologies,
- Federal funding for research has not kept up with institutional expenditures for research,
- Program expansion, and
- New construction or renovation.

Expanding enrollments in the 1960's and 70's permitted colleges and universities to spread fixed costs and increase total expenditures (15% per year from 1970 to 1975) while holding per student expenditure increases to 4% annually. In the decade of the 1980's, the rate of increase in tuition did not come down as fast as the CPI because — at least in part — students were paying a larger share of the costs of their education. In the public sector, more than half of the added tuition revenue from 1982 to 2003 represents increases in the share of educational costs borne by students to compensate for decreases in state general fund support.

Virginia's tuition and fees are higher than corresponding national and regional charges. The Commonwealth's position as a high tuition state is reflected in national comparisons that rank Virginia 12<sup>th</sup> highest among the fifty states. This is an improvement from previous years when Virginia was ranked as high as 2<sup>nd</sup>. The lower ranking reflects the tuition freeze initiated by Governor Allen in 1996 and funded by the 1996 through 2001 General Assemblies.

No public policy exists to guide the Commonwealth as to the appropriate share of educational costs to be borne by the general fund versus in-state students and their parents. The state's fiscal problems in the early 1990's led to an abandonment of its long-standing policy that in-state students cover only 25% of their educational costs. The Joint Subcommittee on Higher Education Funding Policies intended to address this subject in 2001, but was unable to do so due to the budget impasse in Richmond. The current budget deficits have delayed a re-evaluation of this policy.

The following pages contain two tables (pages 4 and 5) and two graphics (pages 6 and 7) comparing Virginia's and JMU's positions on tuition and fees relative to national data from forty-six states. The two tables on pages 4 and 5 compare the rate of increase in undergraduate tuition and required fees, by state, for state colleges and universities for in-state (page 4) and out-of-state (page 5) students. Virginia's four-year rate of increase in 2002-03 was the lowest out of 46 states for in-state students and 40<sup>th</sup> lowest for out-of-state students. In 1998-99 Virginia's ranking was 7<sup>th</sup> for in-state students and 1<sup>st</sup> for out-of-state students. In Virginia, tuition and fees increases moderated substantially between 1996-97 and 2001-02. The graphic on page 6 compares in-state undergraduate tuition and required fees for selected states. Virginia ranked 9<sup>th</sup> highest among the fifty states and \$329 above the national average. In 1995-96 Virginia was ranked 2<sup>nd</sup>. However, it remains to be seen how JMU's rankings will change after the massive budget cuts and rapidly increasing tuition rates that have occurred recently.

The graphic on page 7 compares JMU's tuition and fees to those of our SCHEV (State Council of Higher Education for Virginia) peer group. JMU ranks 12<sup>th</sup> highest out of 25 peer institutions. JMU's 2003-04 tuition and required fees are \$5,058. This figure is below our peer group average of \$7,807. However, when JMU's figure is compared with the 19 other publicly funded peer institutions, it ranks 7<sup>th</sup> highest. The public average for 2003-04, including JMU, is \$4,628.

Virginia's one-year rate of change for in-state tuition and required fees for 2002-03 was 9.2%. This was 0.7% below the national average of 9.9%. For out-of-state students, Virginia's average was 7.3% - 1.45% below the national average of 8.75%.

**RESIDENT UNDERGRADUATE TUITION AND REQUIRED FEES  
(STATE AVERAGES) COLLEGES AND STATE UNIVERSITIES**

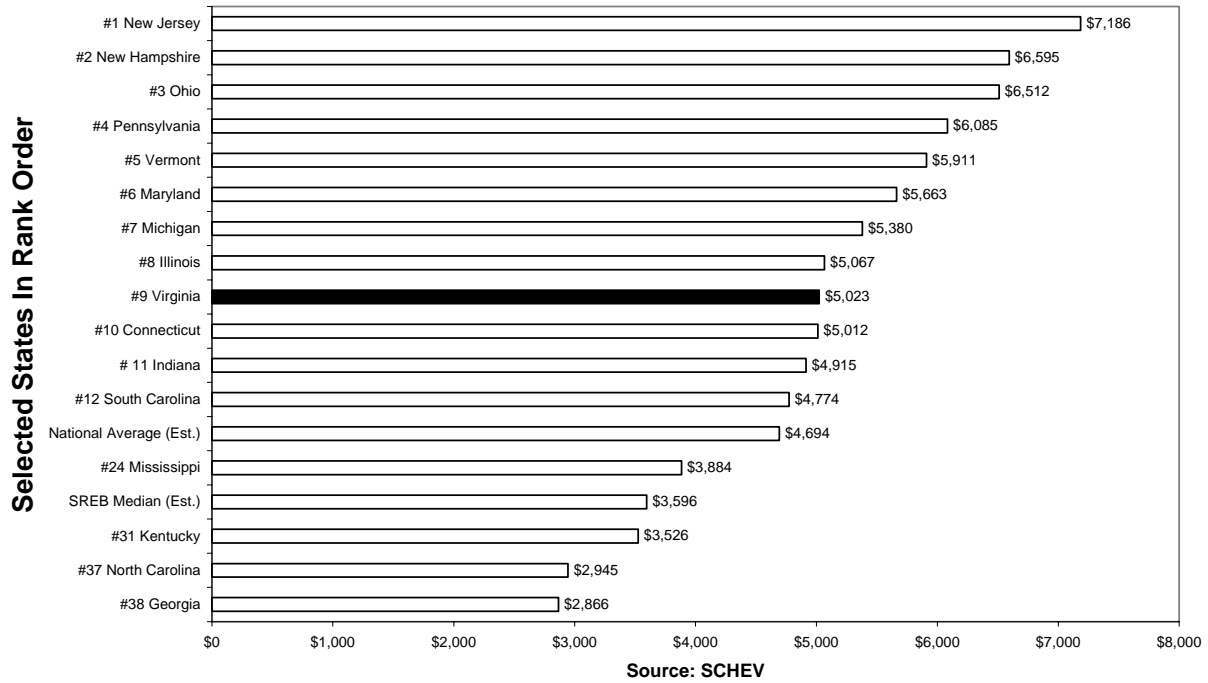
	1998-99	1999-00	2000-01	2001-02	2002-03	Percentage Increase	
						One Year	Four Year
Alabama	2,668	2,761	2,892	3,261	3,488	7.00%	30.70%

Arizona	2,158	2,259	2,344	2,486	2,583	3.90%	19.70%
Arkansas	2,615	2,801	2,974	3,477	3,725	7.10%	42.50%
California	1,878	1,847	1,859	1,897	1,993	5.10%	6.10%
Colorado	2,238	2,302	2,353	2,511	2,704	7.70%	20.80%
Connecticut	3,670	3,747	3,908	4,172	4,556	9.20%	24.10%
Florida	2,114	2,233	2,348	2,551	2,691	5.50%	27.30%
Georgia	2,144	2,239	2,361	2,480	2,605	5.10%	21.50%
Idaho	2,156	2,340	2,514	2,732	3,060	12.00%	41.90%
Illinois	3,500	3,844	4,001	4,215	4,606	9.30%	31.60%
Indiana	3,438	3,556	3,697	3,947	4,468	13.20%	30.00%
Iowa	2,860	2,988	3,130	3,440	4,118	19.70%	44.00%
Kansas	2,165	2,216	2,354	2,424	2,593	7.00%	19.80%
Kentucky	2,339	2,533	2,699	2,897	3,205	10.70%	37.00%
Louisiana	2,173	2,224	2,473	2,492	2,587	3.80%	19.00%
Maine	3,320	3,393	3,510	3,690	3,860	4.60%	16.30%
Maryland	4,228	4,426	4,650	4,759	5,148	8.20%	21.80%
Massachusetts	3,337	3,206	3,260	3,295	4,075	23.70%	22.10%
Michigan	3,603	3,800	4,027	4,501	4,891	8.70%	35.70%
Minnesota	2,931	3,076	3,238	3,561	3,970	11.50%	35.40%
Mississippi	2,689	2,689	2,789	3,207	3,531	10.10%	31.30%
Missouri	2,870	3,019	3,202	3,436	4,127	20.10%	43.80%
Montana	2,677	2,823	2,924	3,222	3,707	15.00%	38.50%
Nebraska	2,336	2,500	2,693	2,916	3,199	9.70%	37.00%
Nevada	2,070	2,145	2,220	2,295	2,370	3.30%	14.50%
New Hampshire	4,765	5,034	5,309	5,557	5,995	7.90%	25.80%
New Jersey	4,708	5,002	5,328	5,762	6,533	13.40%	38.80%
New Mexico	1,708	1,762	1,933	2,042	2,222	8.80%	30.10%
New York	3,917	3,963	4,006	4,068	4,153	2.10%	6.00%
North Carolina	1,757	1,862	2,025	2,255	2,677	18.70%	52.30%
North Dakota	2,623	2,709	2,790	2,909	3,307	13.70%	26.10%
Ohio	4,171	4,396	4,674	5,058	5,920	17.00%	41.90%
Oklahoma	1,837	1,944	1,996	2,171	2,377	9.50%	29.40%
Oregon	3,305	3,362	3,435	3,650	3,773	3.40%	14.20%
Pennsylvania	4,302	4,476	4,695	4,969	5,532	11.30%	28.60%
Rhode Island	3,149	3,260	3,371	3,521	3,761	6.80%	19.40%
South Carolina	3,350	3,350	3,350	3,790	4,340	14.50%	29.60%
South Dakota	3,008	3,258	3,485	3,702	3,987	7.70%	32.50%
Tennessee	2,441	2,622	2,852	3,246	3,491	7.50%	43.00%
Texas	2,467	2,468	2,651	2,724	3,259	19.60%	32.10%
Utah	1,986	2,042	2,106	2,252	2,427	7.80%	22.20%
Vermont	4,592	4,780	4,944	5,132	5,374	4.70%	17.00%
Virginia	4,139	3,658	3,730	3,841	4,195	9.20%	1.30%
Washington	2,657	2,796	2,890	3,071	3,471	13.00%	30.60%
West Virginia	2,280	2,393	2,494	2,593	2,856	10.10%	25.30%
Wisconsin	2,827	3,027	3,058	3,272	3,526	7.70%	24.70%
<b>National Average</b>	<b>4.70%</b>	<b>3.70%</b>	<b>4.60%</b>	<b>7.00%</b>	<b>9.90%</b>	<b>9.90%</b>	<b>27.90%</b>
<b>Virginia Ranking</b>	<b>7</b>	<b>10</b>	<b>12</b>	<b>12</b>	<b>12</b>	<b>23</b>	<b>46</b>

**NONRESIDENT UNDERGRADUATE TUITION AND REQUIRED FEES  
(STATE AVERAGES) COLLEGES AND STATE UNIVERSITIES**

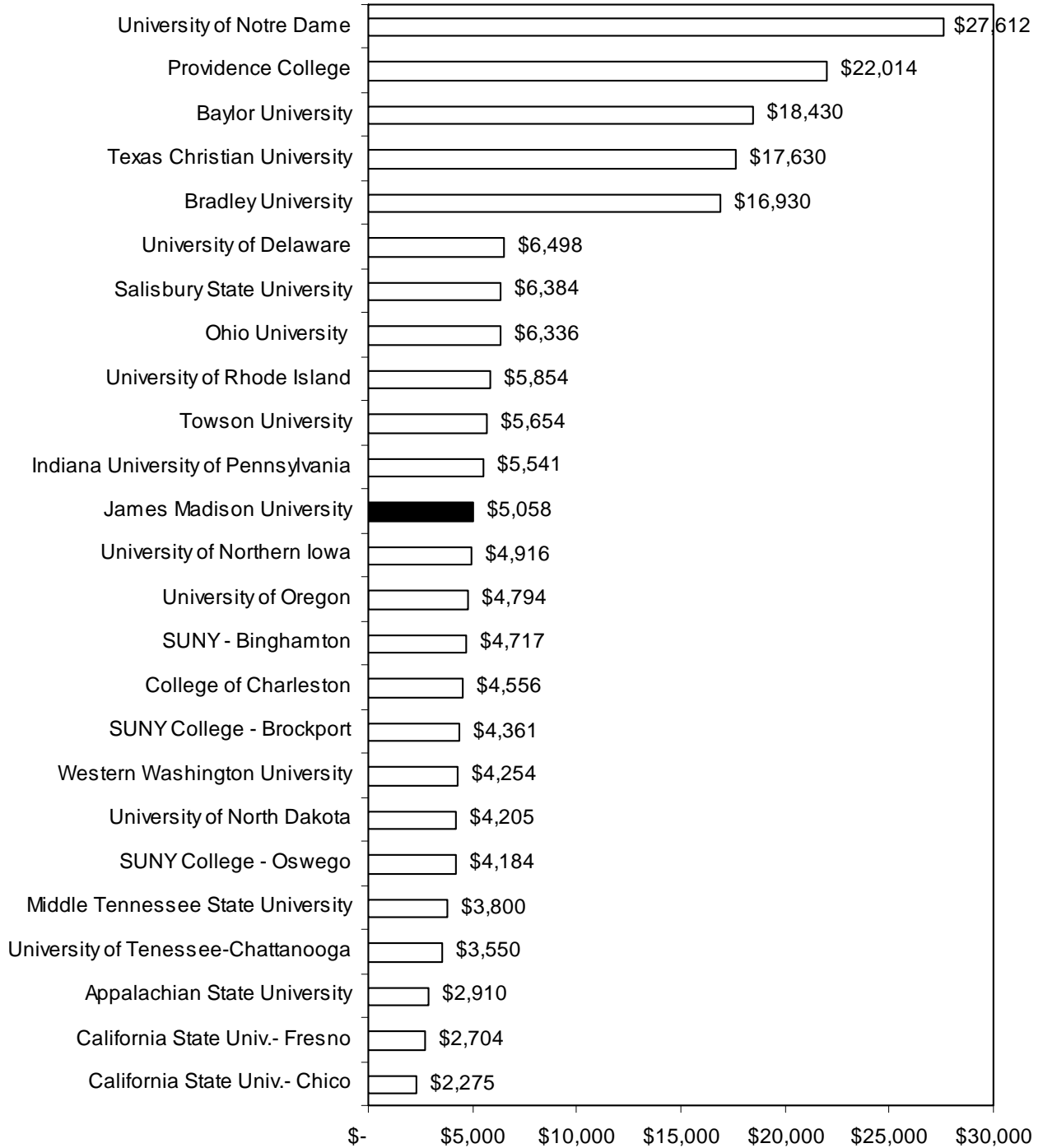
	1998-99	1999-00	2000-01	2001-02	2002-03	Percentage Increase	
						One Year	Four Year
Alabama	5,112	5,337	5,628	6,252	6,694	7.10%	30.90%
Arizona	8,592	8,893	9,288	10,352	11,103	7.30%	29.20%
Arkansas	5,280	5,663	6,026	7,019	7,535	7.40%	42.70%
California	9,259	9,965	9,241	9,279	10,453	12.70%	12.90%
Colorado	7,916	8,074	8,406	8,851	9,501	7.30%	20.00%
Connecticut	9,179	9,287	9,661	10,145	10,758	6.00%	17.20%
Florida	8,769	9,222	9,686	10,439	12,030	15.20%	37.20%
Georgia	7,364	7,663	7,989	8,501	8,860	4.20%	20.30%
Idaho	8,216	8,400	8,634	8,952	9,380	4.80%	14.20%
Illinois	8,537	8,284	8,580	8,425	9,158	8.70%	7.30%
Indiana	8,833	9,200	9,594	10,186	11,438	12.30%	29.50%
Iowa	7,415	7,748	8,094	8,762	10,426	19.00%	40.60%
Kansas	7,013	7,179	7,549	7,759	8,253	6.40%	17.70%
Kentucky	6,396	6,842	7,255	7,739	8,419	8.80%	31.60%
Louisiana	6,566	7,148	7,858	7,893	8,017	1.60%	22.10%
Maine	7,700	7,883	8,120	8,490	8,980	5.80%	16.60%
Maryland	9,009	9,600	10,175	10,567	11,271	6.70%	25.10%
Massachusetts	9,227	9,545	9,805	10,433	11,480	10.00%	24.40%
Michigan	8,340	8,732	9,149	10,243	11,094	8.30%	33.00%
Minnesota	5,971	6,406	6,574	7,180	6,781	-5.60%	13.60%
Mississippi	5,631	5,631	6,510	7,487	8,152	8.90%	44.80%
Missouri	5,391	5,674	6,002	6,451	7,732	19.90%	43.40%
Montana	7,358	7,726	8,056	9,049	10,319	14.00%	40.30%
Nebraska	4,106	4,364	4,654	5,140	5,760	12.10%	40.30%
Nevada	7,840	8,492	9,200	9,510	10,155	6.80%	29.50%
New Hampshire	10,065	10,344	10,619	11,057	11,655	5.40%	15.80%
New Jersey	7,535	8,061	8,530	9,239	10,447	13.10%	38.60%
New Mexico	6,205	6,440	7,078	7,706	8,438	9.50%	36.00%
New York	8,817	8,863	8,906	8,968	9,115	1.60%	3.40%
North Carolina	8,857	9,021	9,244	10,121	11,534	14.00%	30.20%
North Dakota	5,737	5,952	6,167	6,435	7,060	9.70%	23.10%
Ohio	9,420	9,960	10,471	11,161	12,685	13.70%	34.70%
Oklahoma	4,320	4,599	4,651	5,064	5,530	9.20%	28.00%
Oregon	8,706	9,090	9,567	10,020	10,385	3.60%	19.30%
Pennsylvania	9,624	9,244	9,698	10,305	11,356	10.20%	18.00%
Rhode Island	7,929	8,185	8,471	8,911	9,525	6.90%	20.10%
South Carolina	6,610	6,610	6,610	7,410	8,530	15.10%	29.00%
South Dakota	6,683	7,077	7,438	7,785	8,236	5.80%	23.20%
Tennessee	7,275	7,810	8,524	9,768	10,502	7.50%	44.40%
Texas	8,863	9,076	8,835	8,980	9,734	8.40%	9.80%
Utah	5,886	6,058	6,283	6,718	7,295	8.60%	23.90%
Vermont	9,860	10,276	10,632	11,048	11,586	4.90%	17.50%
Virginia	10,193	10,289	10,572	10,970	11,772	7.30%	15.50%
Washington	9,350	9,761	9,989	10,651	11,626	9.20%	24.30%
West Virginia	5,575	5,791	5,993	6,338	7,002	10.50%	25.60%
Wisconsin	9,109	9,891	10,586	12,040	13,572	12.70%	49.00%
<b>National Average</b>	5.10%	3.90%	4.20%	6.60%	8.80%	8.75%	26.39%
<b>Virginia Ranking</b>	1	2	4	5	4	28	40

## 2002-03 Estimated In-State Tuition & Fees Public Comprehensives



Note: SREB and National tuition and fees were estimated to increase by 14.1% during 2003-04.

## 2003-04 SCHEV Peer Group: In-State Tuition and Required Fees



**Average = \$7,807; Public Average = \$4,628**

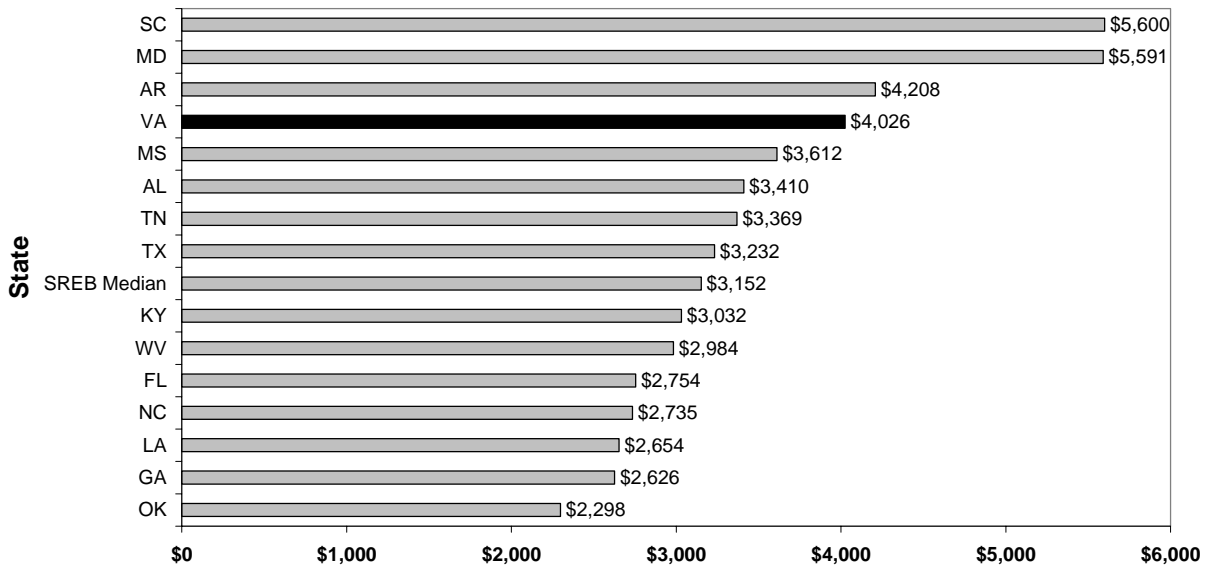
## 2.2 Regional Trends

Virginia is part of the Southern Regional Education Board (SREB), the nation's first interstate compact for education. SREB was created in 1948 at the request of southern governors and serves as a clearinghouse for information on trends and issues that affect education in the south.

Colleges and universities are classified according to SREB definitions based on institutional size and degree programs. Undergraduate tuition and fees charged students in each state's universities and colleges are compared with specific groups based on SREB definitions. For example, James Madison University is considered to be a Four-Year 3 institution. A Four-Year 3 institution awards at least 100 doctoral, masters, education specialist, or post-master's certificates and degrees distributed among at least 10 broad program areas. JMU and Radford are the Four-Year 3 institutions in the Virginia system of higher education. Data for 2003-04 will be available in December 2004.

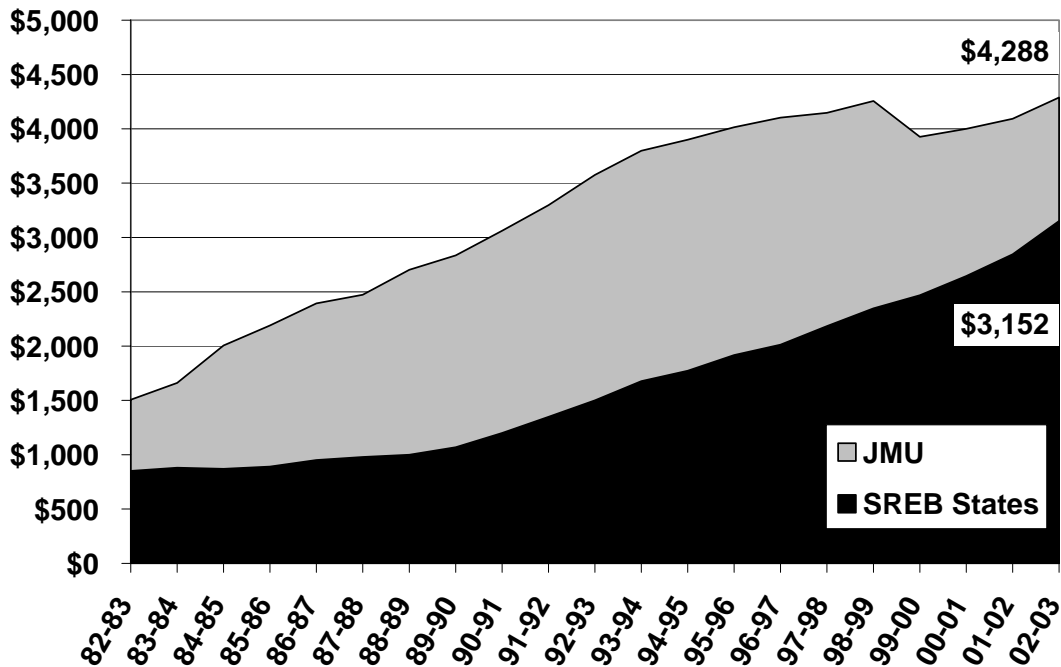
As the graphic below demonstrates, Virginia has the fourth highest tuition and fees for in-state undergraduates at regional Four-Year 3 institutions. This is the same position as 2001-02. Virginia's increase (12%) was slightly above the median (11%) for all the states.

**2002-03 In-State Undergraduate Tuition and Fees  
Four-Year 3 Institutions**



Source: Southern Regional Education Board

**In-State Tuition and Fees  
JMU & SREB States, 1982-83 to 2002-03**



Source: SREB

"Tuition and fees" refers to the annual tuition and mandatory fees charged to all full-time undergraduate students. Mandatory fees do not include special fees assessed in particular programs; for example music, science laboratories, or nursing. Fees unique to given situations including; late registration fees or automobile registration fees are also not included. Mandatory fees do include health service fees, building use fees, student activity fees, and athletic fees where the fee is not optional for full-time students.

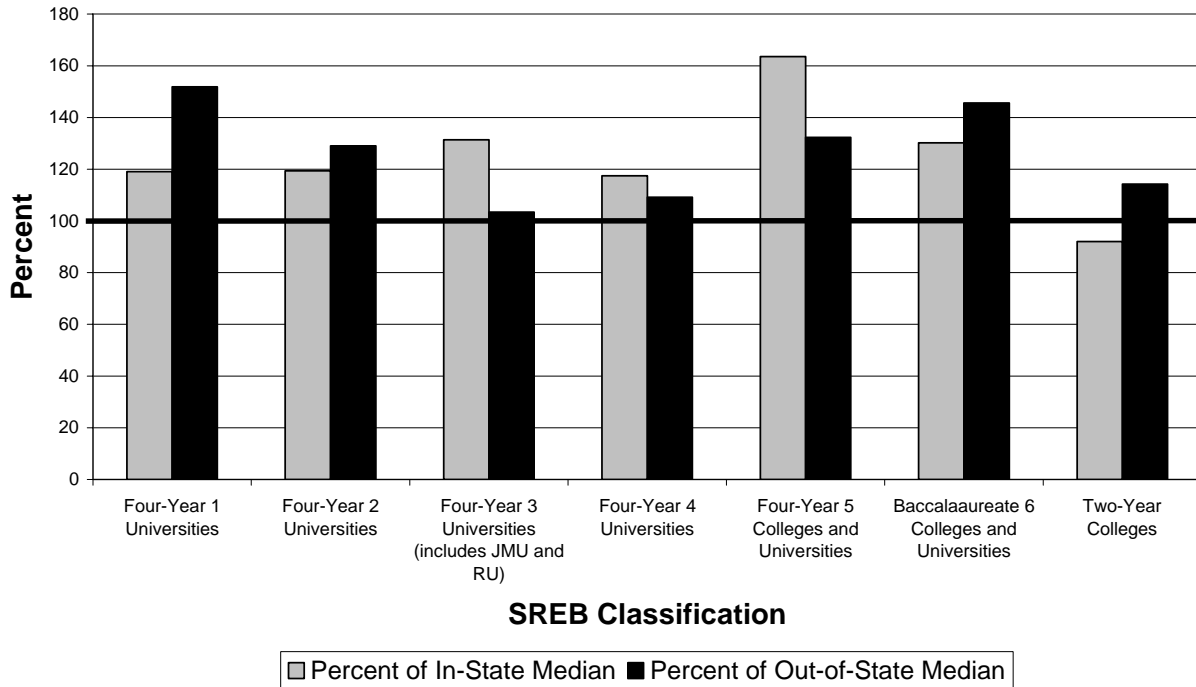
Tuition and fees for in-state undergraduate students at JMU increased less than the SREB median for Four-Year 3 institutions over the past ten years. Since 1982-83, in-state undergraduate student charges at JMU rose 186% while median charges in the region went up 271%. JMU's tuition and fees are now 136% (down from 151% in 2000-01 and 255% in 1990-91) of the SREB regional median for Four-Year 3 institutions. In 2002-03, JMU's in-state tuition and required fees were \$1,136 above the regional median for comparable institutions. The tuition and fee data for 2003-04 are likely to reverse the pattern of the previous ten years as the Virginia institutions were allowed to raise tuition and fees for 2003-04 to recover some of the revenues lost from the state.

**Virginia Highlights  
Percent of SREB Median Tuition and Fees by Residence**

**2002-03**

SREB Classification	Percent of In-State Median	Percent of Out-of-State Median
Four-Year 1 Universities	121	147
Four-Year 2 Universities	118	123
Four-Year 3 Universities (includes JMU and RU)	128	111
Four-Year 4 Universities	108	123
Four-Year 5 Colleges and Universities	180	133
Baccalaureate 6 Colleges and Universities	140	136
Two-Year Colleges	100	102

**Percent Of SREB Median Tuition And Fees By Residence, 2002-03**



## 2.3 State Trends

Among Virginia's fifteen four-year colleges and universities, JMU's in-state tuition ranks 13<sup>th</sup> highest, required fees ranks 3<sup>rd</sup>, and room and board ranks 5<sup>th</sup>. JMU's total in-state tuition, required fees, and room and board ranks 7<sup>th</sup> and out-of-state total cost ranks 8<sup>th</sup>.

### In-State and Out-of-State Undergraduate Tuition, Required Fees And Room and Board for Virginia's State-Supported Institutions Of Higher Education, 2003-04

Rank	IS Tuition		OS Tuition		Required Fees		Room and Board		Total IS		Total OS	
1	UVA	\$4,695	UVA	\$20,715	VMI	\$3,692	VCU	\$6,723	VMI	\$12,850	UVA	\$27,575
2	VPI	\$4,228	CWM	\$18,596	LU	\$2,787	CNU	\$6,700	CWM	\$12,224	CWM	\$27,010
3	VMI	\$3,892	VMI	\$16,604	<b>JMU</b>	<b>\$2,638</b>	NSU	\$6,098	VCU	\$11,592	VMI	\$25,562
4	CWM	\$3,810	VCU	\$15,985	CWM	\$2,620	VSU	\$6,008	UVA	\$11,555	VCU	\$23,936
5	GMU	\$3,672	VPI	\$14,162	VSU	\$2,462	<b>JMU</b>	<b>\$5,966</b>	CNU	\$11,300	GMU	\$20,833
6	VCU	\$3,641	GMU	\$13,512	NSU	\$1,920	GMU	\$5,881	LU	\$11,285	ODU	\$19,591
7	MWC	\$3,390	ODU	\$12,165	ODU	\$1,913	CWM	\$5,794	<b>JMU</b>	<b>\$11,024</b>	NSU	\$19,358
8	LU	\$3,090	UVAW	\$11,568	UVAW	\$1,815	RU	\$5,660	GMU	\$10,993	<b>JMU</b>	<b>\$19,246</b>
9	ODU	\$3,015	NSU	\$11,340	CNU	\$1,752	UVA	\$5,591	ODU	\$10,441	VPI	\$19,175
10	CNU	\$2,848	MWC	\$11,138	RU	\$1,664	ODU	\$5,513	VSU	\$10,358	CNU	\$19,000
11	UVAW	\$2,681	<b>JMU</b>	<b>\$10,642</b>	GMU	\$1,440	MWC	\$5,478	MWC	\$10,166	UVAW	\$18,748
12	RU	\$2,476	CNU	\$10,548	MWC	\$1,298	LU	\$5,408	NSU	\$9,938	MWC	\$17,810
13	<b>JMU</b>	<b>\$2,420</b>	RU	\$9,538	UVA	\$1,269	UVAW	\$5,365	UVAW	\$9,861	VSU	\$17,268
14	NSU	\$1,920	LU	\$9,041	VCU	\$1,228	VMI	\$5,266	RU	\$9,800	LU	\$17,236
15	VSU	\$1,888	VSU	\$8,798	VPI	\$867	VPI	\$4,146	VPI	\$9,241	RU	\$16,862

Source: SCHEV Report on 2003-04 Tuition and Fees, June 30, 2003.

#### NOTES:

1. All required fees listed are for general undergraduate students, living both on- and off-campus and, therefore, exclude any special fees for specific curriculums or special charges associated with dormitory living, such as room and board.
2. Room and board charges are weighted averages for double occupancy rooms.
3. Old Dominion University charges a per credit hour rate to all undergraduate and graduate students. The full-time charges for undergraduate tuition and required fees are based on 30 regular session credit hours, 15 hours per semester.
4. At Virginia Military Institute, all students are required to live on post; therefore, room, board and laundry fees are also required fees.

## 2003-04 Full-Time In-State Undergraduate Student Charges

Institution	Tuition and Mandatory Fees	Percent Change From 02-03	Room and Board	Percent Change From 02-03	Total	Percent Change From 02-03
GMU	\$5,112	15.8%	\$5,881	2.6%	\$10,993	8.3%
ODU	4,928	15.6%	5,513	3.1%	10,441	8.6%
UVA	5,964	29.8%	5,591	6.9%	11,555	17.6%
VCU	4,869	24.3%	6,723	16.9%	11,592	19.9%
VPI	5,095	29.4%	4,146	0.3%	9,241	14.5%
CWM	6,430	26.3%	5,794	4.7%	12,224	15.0%
CNU	4,600	28.3%	6,700	5.5%	11,300	13.7%
UVA-Wise	4,496	17.0%	5,365	2.5%	9,861	8.6%
JMU	5,058	18.0%	5,966	3.0%	11,024	9.3%
LU	5,877	26.1%	5,408	4.5%	11,285	14.7%
MWC	4,688	19.2%	5,478	3.0%	10,166	9.9%
NSU	3,840	16.5%	6,098	9.1%	9,938	11.9%
RU	4,140	23.8%	5,660	4.0%	9,800	11.5%
VMI	7,584	14.6%	5,266	4.2%	12,850	10.1%
VSU	4,350	22.4%	6,008	5.5%	10,358	12.0%
VCCS	1,883	44.4%	N/A	N/A	1,883	44.4%
Doct. Avg.	5,400	23.6%	5,608	6.1%	10,282	14.0%
Comp. Avg.	4,959	20.2%	5,772	4.6%	10,731	11.3%
Avg.-All *	5,135	21.6%	5,706	5.2%	10,842	12.4%

Source: SCHEV Report on 2003-04 Tuition and Fees, June 30, 2003.

\* Excludes VCCS

Annual increases in Virginia for in-state tuition and required fees from 2002-03 to 2003-04 for the senior institutions ranged from 14.6% at Virginia Military Institute to 29.8% at University of Virginia. Annual increases in Virginia for the senior institutions for in-state tuition, required fees, and room and board ranged from 8.3% at George Mason University to 19.9% at Virginia Commonwealth University.

## 2003-04 Full-Time Out-of-State Undergraduate Student Charges

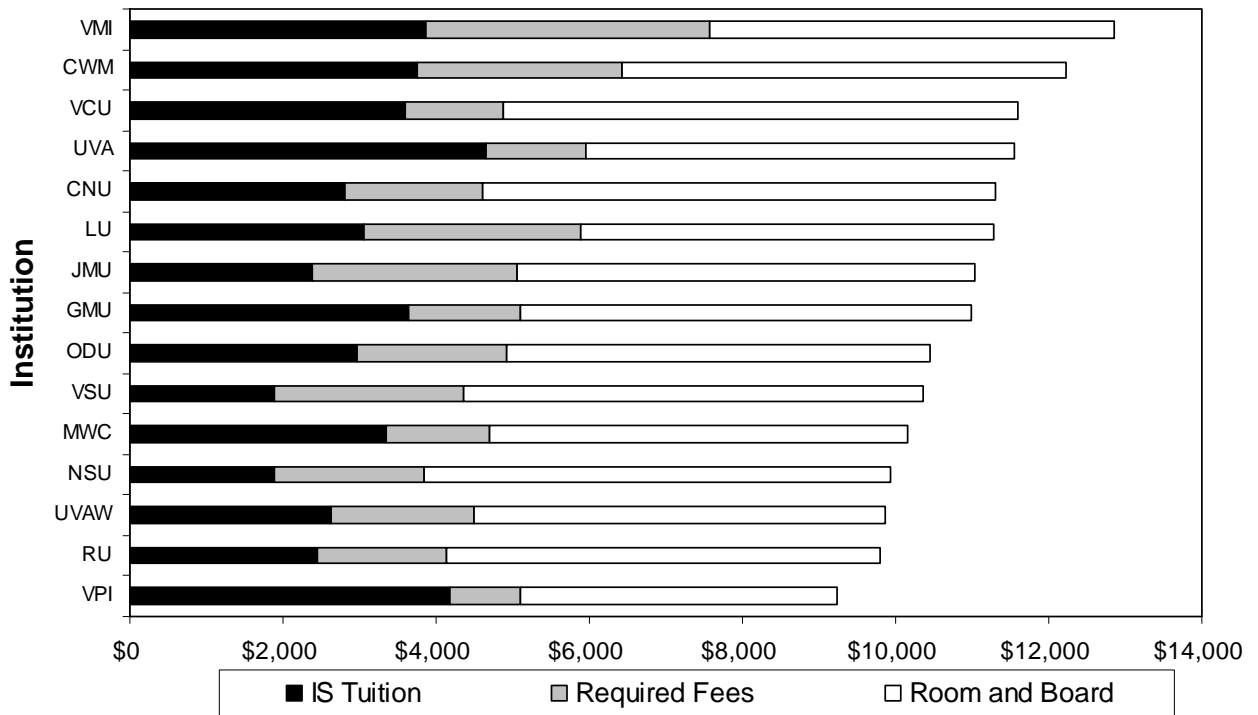
Institution	Tuition & Mandatory Fees 03-04	Percent Change From 02-03	Room & Board 03-04	Percent Change From 02-03	Total Out-of-State 03-04	Percent Change From 02-03
GMU	\$14,952	9.0%	\$5,881	2.6%	\$20,833	7.1%
ODU	14,078	5.9%	5,513	3.1%	19,591	5.1%
JVA	21,984	11.0%	5,591	6.9%	27,575	10.1%
VCU	17,213	15.6%	6,723	16.9%	23,936	16.0%
VPI	15,029	10.9%	4,146	0.3%	19,175	8.4%
CWM	21,216	10.0%	5,794	4.7%	27,010	8.8%
CNU	12,300	21.0%	6,700	5.5%	19,000	15.0%
JVA-Wise	13,383	15.3%	5,365	2.5%	18,748	11.4%
JMU	13,280	15.8%	5,966	3.0%	19,246	11.5%
LU	11,828	11.7%	5,408	4.5%	17,236	9.3%
MWC	12,332	10.9%	5,478	3.0%	17,810	8.3%
NSU	13,260	13.3%	6,098	9.1%	19,358	12.0%
RU	11,202	14.4%	5,660	4.0%	16,862	10.7%
VMI	20,296	10.1%	5,266	4.2%	25,562	8.8%
VSU	11,260	9.9%	6,008	5.5%	17,268	8.3%
VCCS	6,306	11.0%	N/A	N/A	6,306	11.0%
Doct. Avg.	17,412	10.5%	5,608	6.1%	23,020	9.4%
Comp. Avg.	13,238	13.3%	5,772	4.6%	19,010	10.5%
Avg.-All*	14,908	12.0%	5,706	5.2%	20,614	10.0%

**Source: SCHEV Report on 2003-04 Tuition and Fees, June 30, 2003.**

**\*Excludes VCCS**

Annual percent changes in Virginia for out-of-state tuition and required fees from 2002-03 to 2003-04 for the senior institutions ranged from 5.9% at Old Dominion University to 21.0% at Christopher Newport University. James Madison University's increase, 15.8%, was the second highest of the senior institutions. Annual increases in Virginia for out-of-state tuition, required fees, and room and board for the senior institutions ranged from 5.1% for Old Dominion University to 16.0% at Virginia Commonwealth University. The increases in the above table were calculated before any mid-year tuition adjustments.

## VA Public In-State Charges, 2003-04 Combined Tuition/Fees, Room/Board

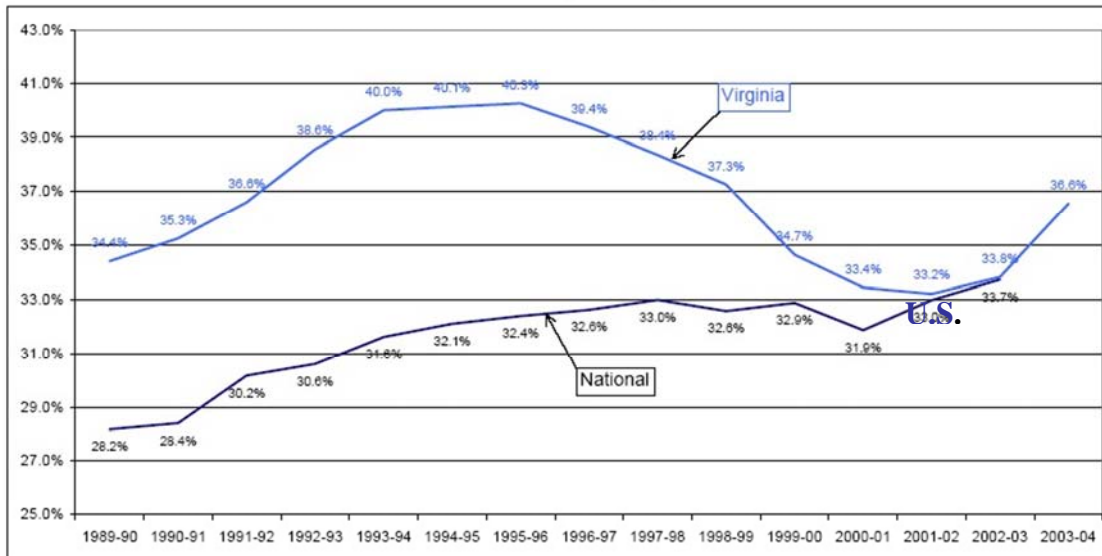


The following page contains a graph and analyses from SCHEV that illustrate the ability of the average Virginian to afford higher education at one of the Commonwealth's public colleges or universities.

According to SCHEV's annual tuition and fee report,

“Compared to other states, Virginia’s median in-state undergraduate charges as a percentage of per capita disposable income have exceeded the national average over the last decade. However, the Commonwealth’s policy to restrain and reduce in-state undergraduate tuition between 1994 and 2002 has reduced the gap between the state and national averages. In 1990, Virginia’s per capita disposable income was about 6% higher than the national average. In contrast, the median total undergraduate charge (including room and board) for in-state undergraduate students was nearly 30% higher than the national norm. Nationally, total charges represented 28.2% of per capita disposable income while the rate was 34.4% in Virginia. By 2003, the relationship between student charges and income had changed substantially in Virginia. While Virginia’s income was still approximately 6% higher than the national average, total student charges were also about 6% higher than they were nationally. As a result, median charges for in-state undergraduates represented about the same percentage of income in Virginia (33.8%) as they do nationally (33.7%), as is shown in Chart 8A (below). National data for 2003-04 will not be available until late 2003, so the impact of the recent tuition and fee increases in Virginia relative to the nation is yet to be evaluated.”

**Average Public 4-Year Total Undergraduate Charges  
As a Percent of Per Capita Disposable Income**



Note: Cost includes tuition and mandatory fees, and room and board. Excludes mid-year tuition increases.  
The 2003-04 national average is estimated based on the annual increase rate in the prior year.  
Source: College Board, US Bureau of Economic Analysis, and SCHEV.

The graphic above demonstrates that a higher education at a Virginia public institution has gotten considerably more affordable since the mid 1990's and is now close to the national average. The recent upward trend is – however – disturbing and very similar to that when the state was coming out of the recession of the early 1990's. Given the Commonwealth's current fiscal situation, this trend towards reduced affordability will probably continue for the foreseeable future.

## 2.4 Tuition and Fee History

### JMU Tuition, Fee, and Room and Board Charges 1994-95 to 2003-04

	94/95	95/96	96/97	97/98	98/99	99/00	00/01	01/02	02/03 <sup>1</sup>	03/04
<b>IN-STATE</b>										
Tuition & Fees	\$1,878	\$1,932	\$1,940	\$1,940	\$1,982	\$1,586	\$1,586	\$1,586	\$1,728	\$2,420
Comp. Fee	2,022	2,082	2,164	2,208	2,274	2,340	2,414	2,508	2,560	2,638
Total Commuter	3,900	4,014	4,104	4,148	4,256	3,926	4,000	4,094	4,288	5,058
Room & Board <sup>2</sup>	4,544	4,680	4,884	4,994	5,264	5,392	5,504	5,678	5,794	5,966
Total On-Campus	8,444	8,694	8,988	9,142	9,520	9,318	9,504	9,772	10,082	11,024
<b>OUT-OF-STATE</b>										
Tuition & Fees	5,972	6,212	6,416	6,608	6,982	7,192	7,436	8,098	8,912	10,642
Comp. Fee	2,022	2,082	2,164	2,208	2,274	2,340	2,414	2,508	2,560	2,638
Total Commuter	7,994	8,294	8,580	8,816	9,256	9,532	9,850	10,606	11,472	13,280
Room & Board <sup>2</sup>	4,544	4,680	4,884	4,994	5,264	5,392	5,504	5,678	5,794	5,966
Total On-Campus	12,538	12,974	13,464	13,810	14,520	14,924	15,354	16,284	17,266	19,246

Source: JMU Budget Office

<sup>1</sup> Before mid-year tuition increases

<sup>2</sup> Based on 19-meal plan

### JMU Tuition and Fee History 1994-95 to 2003-04

