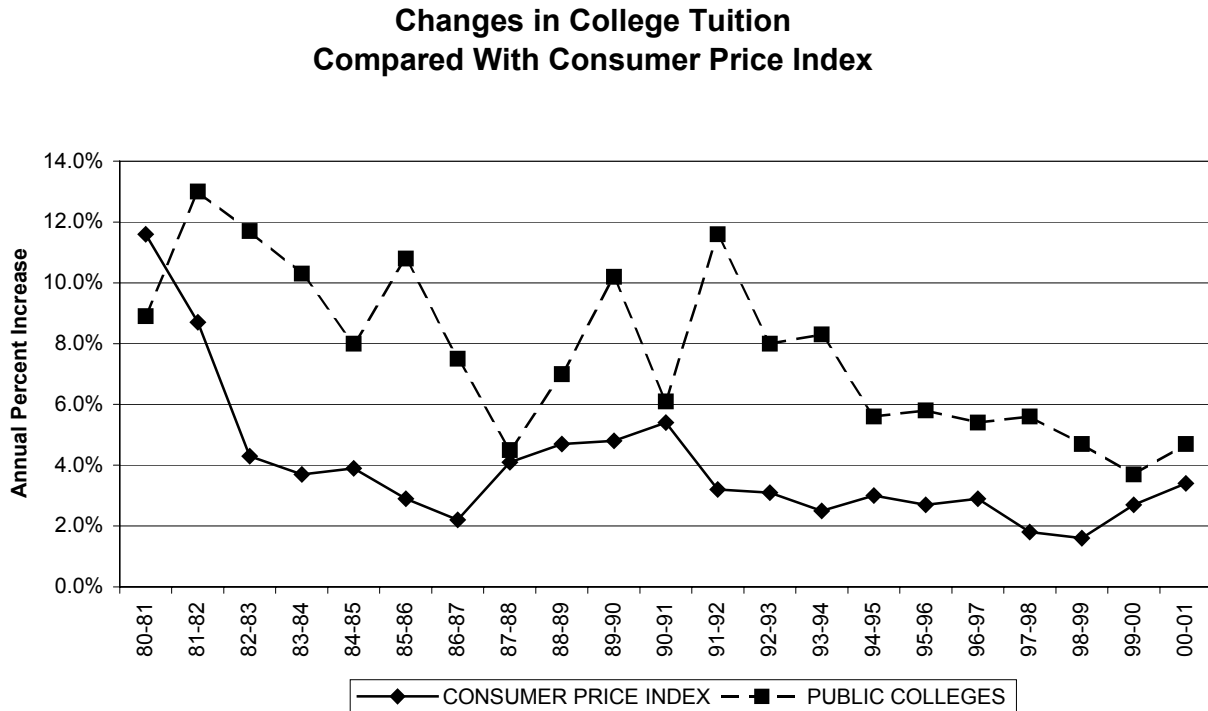


2.0 TUITION AND FEES

2.1 National Trends

Concerns over the rising costs of attending colleges and universities have heightened in the past few years and are influencing state policies regarding tuition and fees. Since 1981-82 the average cost of attending colleges and universities has increased faster than the rate of inflation as measured by the Consumer Price Index (CPI).



Factors involved in rising costs for higher education include:

- Reduction in state general fund support,
- Faculty salaries rising faster than general inflation,
- Relative decline in federal student grant programs,
- High cost of institutionally funded financial aid,
- Migration of students from low to high cost disciplines,
- Administrative support and governmentally imposed requirements have risen,
- The need to keep pace with new technologies,
- Federal funding for research has not kept up with institutional expenditures for research,
- Program expansion, and
- New construction or renovation.
- Increases in enrollments.

Expanding enrollments in the 1960s and 70s permitted colleges and universities to spread fixed costs and increase total expenditures (15 percent per year from 1970 to 1975) while holding per student expenditure increases to 4 percent annually. In the decade of the 1980s, the rate of increase in tuition did not come down as fast as the CPI because — at least in part — students were paying a larger share of the costs of their education. In the public sector, more than half of the added tuition revenue from 1982 to 2001 represents increases in the share of educational costs borne by students to compensate for decreases in state general fund support.

Virginia's tuition and fees are higher than corresponding national and regional charges. The Commonwealth's position as a high tuition state is reflected in national comparisons that rank Virginia twelfth highest among the fifty states. This is an improvement from previous years when Virginia was ranked as high as second. The lower ranking reflects the tuition freeze initiated by Governor Allen in 1996 and funded by the 1996 through 2001 General Assemblies.

No funded public policy exists to guide the Commonwealth as to the share of educational costs to be borne by the general fund versus in-state students and their parents. The Appropriations Act includes language that sets a target of 75 percent of total costs to be paid by the state and 25 percent by students and parents – the same division that was abandoned due to the recession of the early 1990s. The current decline in state revenues will, most probably, create a significant delay in the Commonwealth's attainment of the stated 75/25 goal.

The following pages contain two tables (pages 4 and 5) and two graphics (pages 6 and 7) comparing Virginia's and JMU's positions on tuition and fees relative to national data from the other forty-five states which report this information. The two tables on pages 4 and 5 compare the rate of increase in undergraduate tuition and required fees, by state, for state colleges and universities for in-state (page 4) and out-of-state (page 5) students. Virginia's four-year rate of increase in 2000-01 was 41st out of 46 states for in-state students and tied for 36th for out-of-state students. Five years ago Virginia's ranking was 37th for in-state students and 27th for out-of-state students. In other words, tuition and fees increases in Virginia have moderated substantially in the last five years. The graphic on page 6 compares in-state undergraduate tuition and required fees by state. Virginia ranks twelfth highest among the fifty states and \$546 above the national average. In 1995-96 Virginia was ranked second.

The graphic on page 7 compares JMU's tuition and fees to those of our SCHEV peer group. JMU ranks fourteenth out of 25 peer institutions, the same ranking as 2000-01. JMU's 2001-02 tuition and required fees are \$4,094. This figure is below our peer group average of \$6,571. However, when JMU's figure is compared with the 19 other publicly funded peer institutions, it ranks ninth highest, the same as 2000-01. In 1998-99 JMU ranked sixth. The public peer group average for 2000-01, including JMU, is \$3,846.

Virginia's one-year rate of change for in-state tuition and required fees for 2000-01 was 1.9 percent. This was 3.0 percent below the national average of 4.9 percent. For out-of-state students, Virginia's average was 2.7 percent — 1.8 percent below the national average of 4.5 percent.

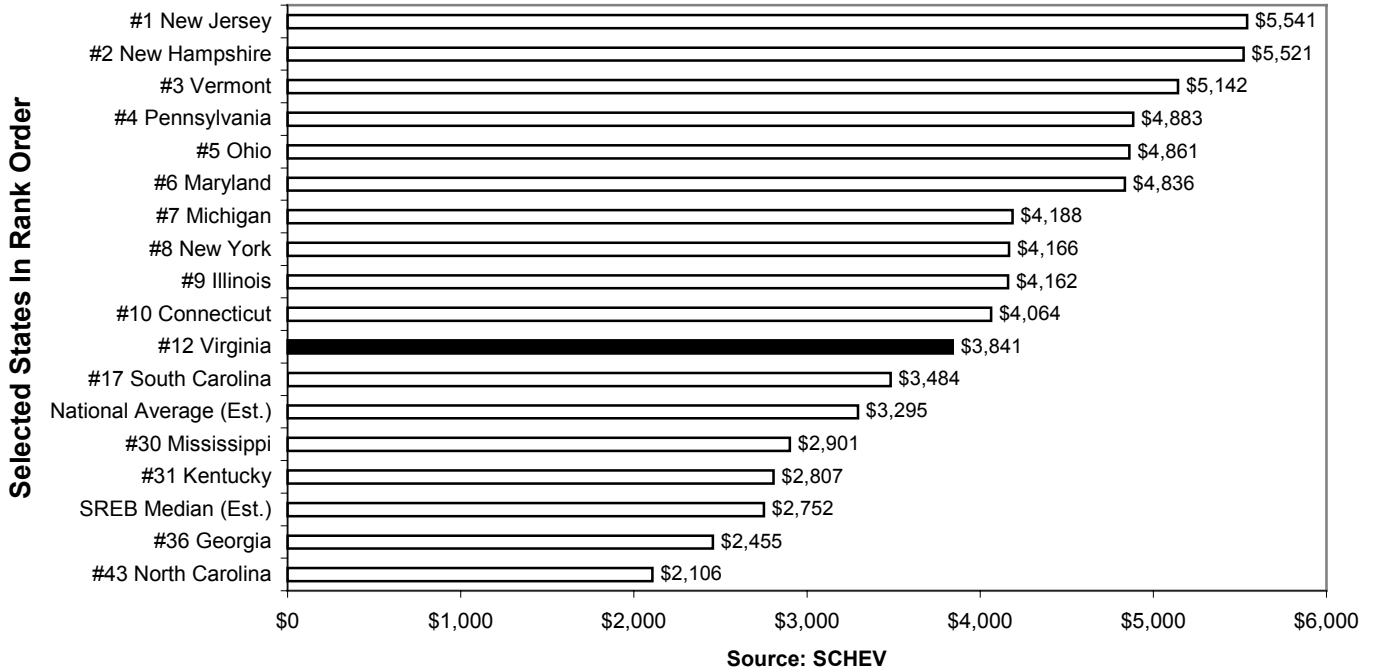
**RESIDENT UNDERGRADUATE TUITION AND REQUIRED FEES
(STATE AVERAGES) COLLEGES AND STATE UNIVERSITIES**

	1996-97	1997-98	1998-99	1999-00	2000-01	Percentage Increase	
						One Year	Four Year
Alabama	2,359	2,489	2,572	2,877	2,892	4.7%	22.6%
Arizona	2,009	2,058	2,158	2,259	2,344	3.8%	16.7%
Arkansas	2,110	2,305	2,615	2,801	2,974	6.2%	40.9%
California	1,923	1,957	1,878	1,847	1,859	0.7%	-3.3%
Colorado	2,109	2,180	2,238	2,302	2,353	2.2%	11.6%
Connecticut	3,505	3,611	3,670	3,747	3,908	4.3%	11.5%
Florida	1,888	1,994	2,114	2,233	2,348	5.2%	24.4%
Georgia	1,932	2,059	2,144	2,239	2,361	5.5%	22.2%
Idaho	1,760	1,979	2,156	2,340	2,514	7.4%	42.8%
Illinois	3,203	3,392	3,500	3,844	4,002	4.1%	24.9%
Indiana	3,179	3,305	3,438	3,556	3,697	4.0%	16.3%
Iowa	2,650	2,752	2,860	2,988	3,130	4.8%	18.1%
Kansas	2,012	2,096	2,165	2,216	2,354	6.2%	17.0%
Kentucky	2,121	2,187	2,339	2,533	2,699	6.5%	28.4%
Louisiana	2,055	2,117	2,183	2,222	2,482	11.2%	20.8%
Maine	3,028	3,192	3,320	3,393	3,510	3.4%	15.9%
Maryland	3,702	4,003	4,228	4,426	4,650	5.1%	25.6%
Massachusetts	3,453	3,433	3,337	3,206	3,260	1.7%	-6.0%
Michigan	3,327	3,456	3,603	3,375	4,027	6.0%	21.0%
Minnesota	2,674	2,674	2,931	3,076	3,238	5.3%	21.1%
Mississippi	2,370	2,415	2,689	2,689	2,789	3.7%	17.7%
Missouri	2,622	2,753	2,870	3,019	3,202	6.0%	22.1%
Montana	2,276	2,468	2,677	2,823	2,924	3.6%	28.5%
Nebraska	2,042	2,175	2,336	2,500	2,873	14.9%	40.7%
Nevada	1,920	1,995	2,070	2,145	2,220	3.5%	15.6%
New Hampshire	3,860	4,331	4,765	5,034	5,309	5.5%	37.5%
New Jersey	3,983	4,336	4,708	5,002	5,328	6.5%	33.8%
New Mexico	1,514	1,514	1,708	1,762	1,933	9.7%	27.7%
New York	3,831	3,866	3,917	3,963	4,006	1.1%	4.6%
North Carolina	1,618	1,700	1,757	1,862	2,025	8.8%	25.2%
North Dakota	2,218	2,525	2,623	2,709	2,790	3.0%	25.8%
Ohio	3,764	3,927	4,171	4,396	4,674	6.3%	24.2%
Oklahoma	1,645	1,830	1,837	1,944	1,996	2.6%	21.3%
Oregon	3,198	3,275	3,305	3,362	3,435	2.2%	7.4%
Pennsylvania	4,126	4,265	4,302	4,476	4,695	4.9%	13.8%
Rhode Island	2,999	3,073	3,149	3,260	3,371	3.4%	12.4%
South Carolina	3,010	3,270	3,350	3,350	3,350	0.0%	11.3%
South Dakota	2,613	2,768	3,008	3,258	3,485	7.0%	33.4%
Tennessee	1,940	2,233	2,441	2,622	2,852	8.8%	47.0%
Texas	2,012	2,289	2,467	2,610	2,651	7.4%	31.8%
Utah	1,863	1,935	1,986	2,042	2,106	3.1%	13.0%
Vermont	4,248	4,428	4,592	4,780	4,944	3.4%	16.4%
Virginia	3,997	4,058	4,139	3,658	3,727	1.9%	-6.7%
Washington	2,441	2,537	2,652	2,769	2,890	3.4%	18.4%
West Virginia	2,101	2,185	2,280	2,393	2,494	4.2%	18.7%
Wisconsin	2,471	2,683	2,827	3,027	3,058	1.0%	23.8%
National Average	4.4%	5.3%	4.7%	3.7%	4.7%	4.9%	20.8%
Virginia Ranking	3	5	7	10	12	41	46

**NONRESIDENT UNDERGRADUATE TUITION AND REQUIRED FEES
(STATE AVERAGES) COLLEGES AND STATE UNIVERSITIES**

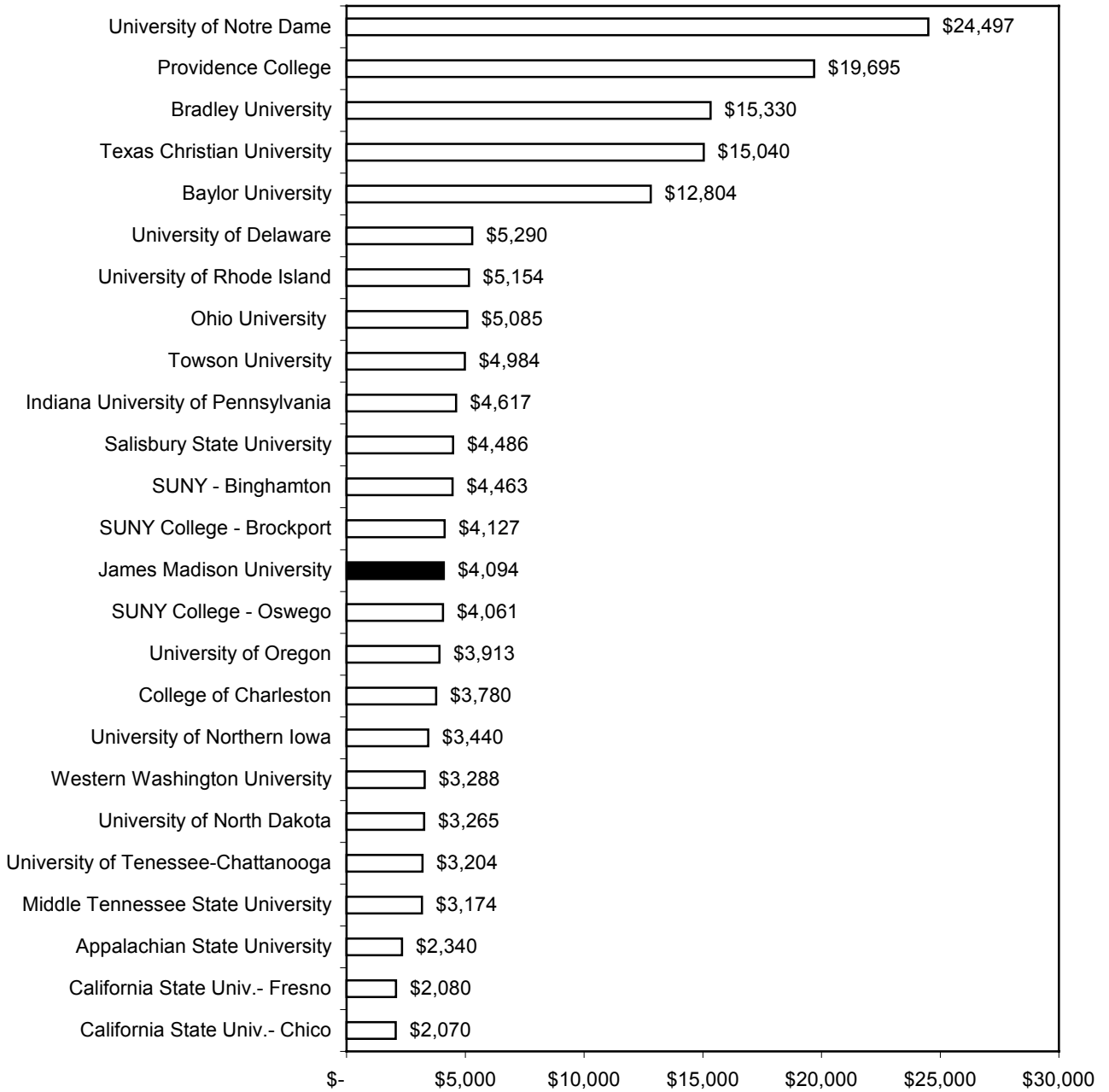
	1996-97	1997-98	1998-99	1999-00	2000-01	Percentage Increase	
						One Year	Four Year
Alabama	3,979	4,753	4,905	5,567	5,628	5.5%	41.4%
Arizona	7,951	8,267	8,592	8,893	9,288	4.4%	16.8%
Arkansas	4,403	4,734	5,280	5,663	6,026	6.4%	36.8%
California	9,303	8,791	9,259	9,965	9,241	-7.3%	-0.7%
Colorado	7,379	7,645	7,916	8,074	8,406	4.1%	13.9%
Connecticut	8,849	9,089	9,179	9,287	9,661	4.0%	9.2%
Florida	7,133	7,911	8,769	9,222	9,686	5.0%	35.8%
Georgia	5,811	6,520	7,364	7,663	7,989	4.3%	37.5%
Idaho	7,270	7,909	8,216	8,400	8,634	2.8%	18.8%
Illinois	7,933	8,295	8,537	8,284	8,580	3.6%	8.2%
Indiana	8,075	8,443	8,833	9,200	9,594	4.3%	18.8%
Iowa	6,868	7,136	7,415	7,748	8,094	4.5%	17.9%
Kansas	6,568	6,834	7,013	7,179	7,549	5.2%	14.9%
Kentucky	5,753	5,959	6,396	6,842	7,255	6.0%	26.1%
Louisiana	4,549	5,435	6,448	7,393	8,181	10.4%	79.9%
Maine	7,078	7,452	7,700	7,883	8,120	3.0%	14.7%
Maryland	7,611	8,713	9,009	9,600	10,175	6.0%	33.7%
Massachusetts	8,107	8,519	9,227	9,545	9,805	2.7%	18.5%
Michigan	7,915	8,026	8,340	8,307	9,149	4.8%	15.6%
Minnesota	5,554	5,554	5,971	6,406	6,574	2.6%	18.4%
Mississippi	4,959	4,999	5,631	5,631	6,510	15.6%	31.3%
Missouri	4,932	5,170	5,391	5,674	6,002	5.8%	21.7%
Montana	6,357	6,838	7,358	7,726	8,056	4.3%	26.7%
Nebraska	3,662	3,873	4,106	4,364	4,823	10.5%	31.7%
Nevada	7,020	7,430	7,840	8,492	9,200	8.3%	31.1%
New Hampshire	9,520	9,831	10,065	10,344	10,619	2.7%	11.5%
New Jersey	6,258	6,864	7,535	8,061	8,530	5.8%	36.3%
New Mexico	5,602	5,602	6,205	6,440	7,078	9.9%	26.3%
New York	8,731	8,765	8,817	8,863	8,906	0.5%	2.0%
North Carolina	8,604	8,661	8,857	9,021	9,244	2.5%	7.4%
North Dakota	5,066	5,507	5,737	5,952	6,167	3.6%	21.7%
Ohio	8,385	8,858	9,420	9,960	10,471	5.1%	24.9%
Oklahoma	3,970	4,313	4,320	4,599	4,651	1.1%	17.1%
Oregon	8,174	8,462	8,706	9,090	9,567	5.2%	17.0%
Pennsylvania	9,328	9,624	9,624	9,244	9,698	4.9%	4.0%
Rhode Island	7,519	7,729	7,929	8,185	8,471	3.5%	12.7%
South Carolina	6,020	6,020	6,450	6,610	6,610	0.0%	9.8%
South Dakota	5,607	6,300	6,683	7,077	7,438	5.1%	32.7%
Tennessee	6,276	6,829	7,275	7,810	8,524	9.1%	35.8%
Texas	8,432	8,709	8,863	9,076	8,835	-2.7%	4.8%
Utah	5,550	5,730	5,886	6,058	6,283	3.7%	13.2%
Vermont	9,008	9,408	9,860	10,276	10,632	3.5%	18.0%
Virginia	9,714	9,937	10,193	10,289	10,569	2.7%	8.8%
Washington	8,626	8,972	9,345	9,743	9,989	2.3%	15.8%
West Virginia	5,151	5,390	5,575	5,791	5,993	3.5%	16.4%
Wisconsin	7,935	8,625	9,109	9,891	10,586	7.0%	33.4%
National Average	4.9%	5.0%	5.1%	3.9%	4.2%	4.5%	21.5%
Virginia Ranking	1	1	1	2	4	36(T)	40

2001-02 Estimated In-State Tuition & Fees Public Comprehensives



Note: SREB and National tuition and fees were estimated to increase by 4.0 percent during 2001-02.

**2001-02 SCHEV Peer Group:
In-State Tuition and Required Fees**



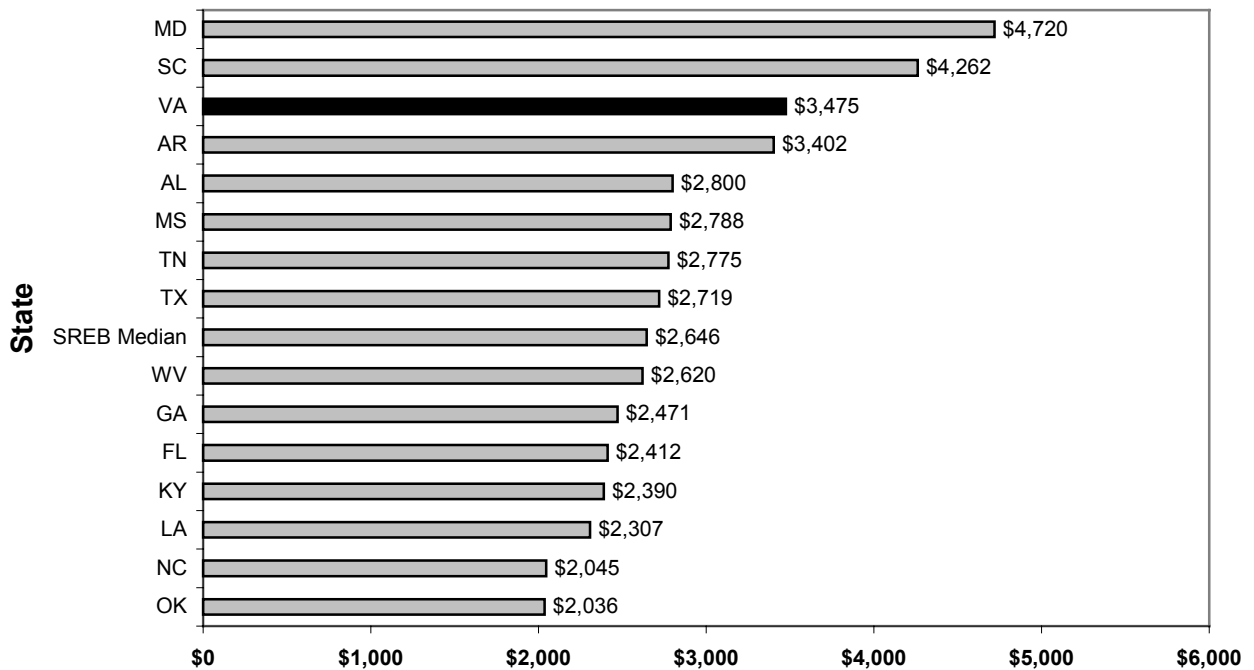
Average = \$6,571; Public Average = \$3,846

2.2 Regional Trends

Virginia is part of the Southern Regional Education Board (SREB) — the nation's first interstate compact for education. SREB was created in 1948 at the request of southern governors and acts as a clearinghouse for information on trends and issues that affect education in the south.

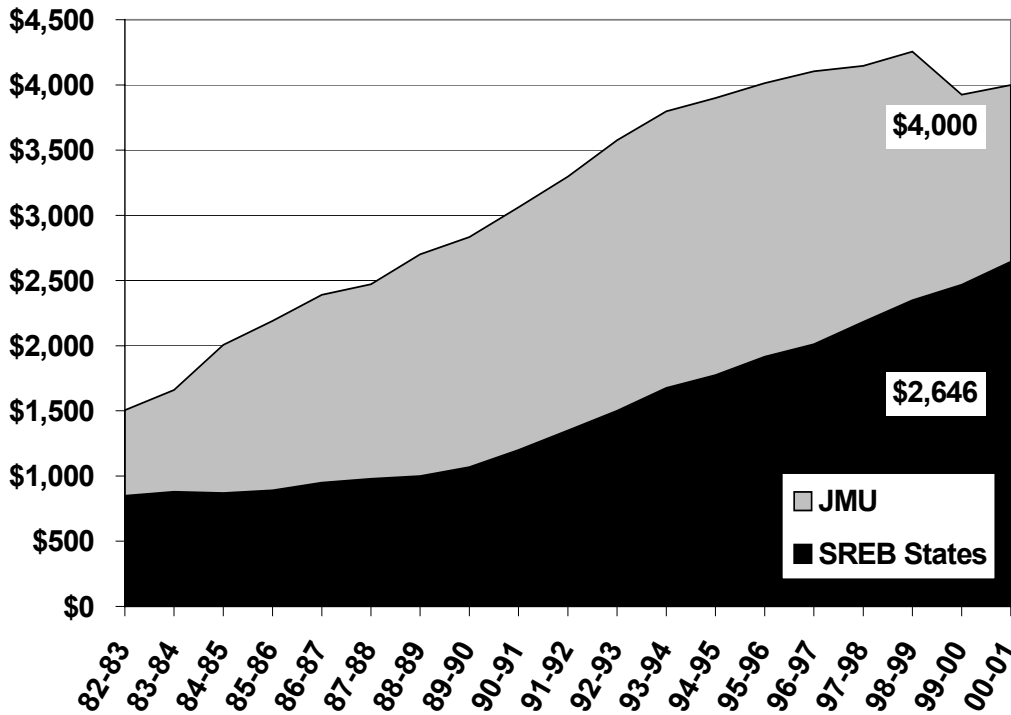
Colleges and universities are classified according to SREB definitions based on institutional size and degree programs. Undergraduate tuition and fees charged students in each state's universities and colleges are compared with specific groups based on SREB definitions. For example, James Madison University is considered to be a Four-Year 3 institution. A Four-Year 3 institution awards at least 100 doctoral, masters, education specialist, or post-master's certificates and degrees distributed among at least 10 broad program areas. JMU and Radford are the Four-Year 3 institutions in the Virginia system of higher education.

**2000-01 In-State Undergraduate Tuition and Fees
Four-Year 3 Institutions**



Source: Southern Regional Education Board

**In-State Tuition and Fees
JMU & SREB States, 1982-83 to 2000-01**



Source: SREB

"Tuition and fees" refers to the annual tuition and mandatory fees charged all full-time undergraduate students. Mandatory fees do not include special fees assessed in particular programs; for example music, science laboratories, or nursing. Nor are other fees unique to given situations included; for example late registration fees or automobile registration fees. Mandatory fees do include health service fees, building use fees, student activity fees, and athletic fees where the fee is not optional for full-time students.

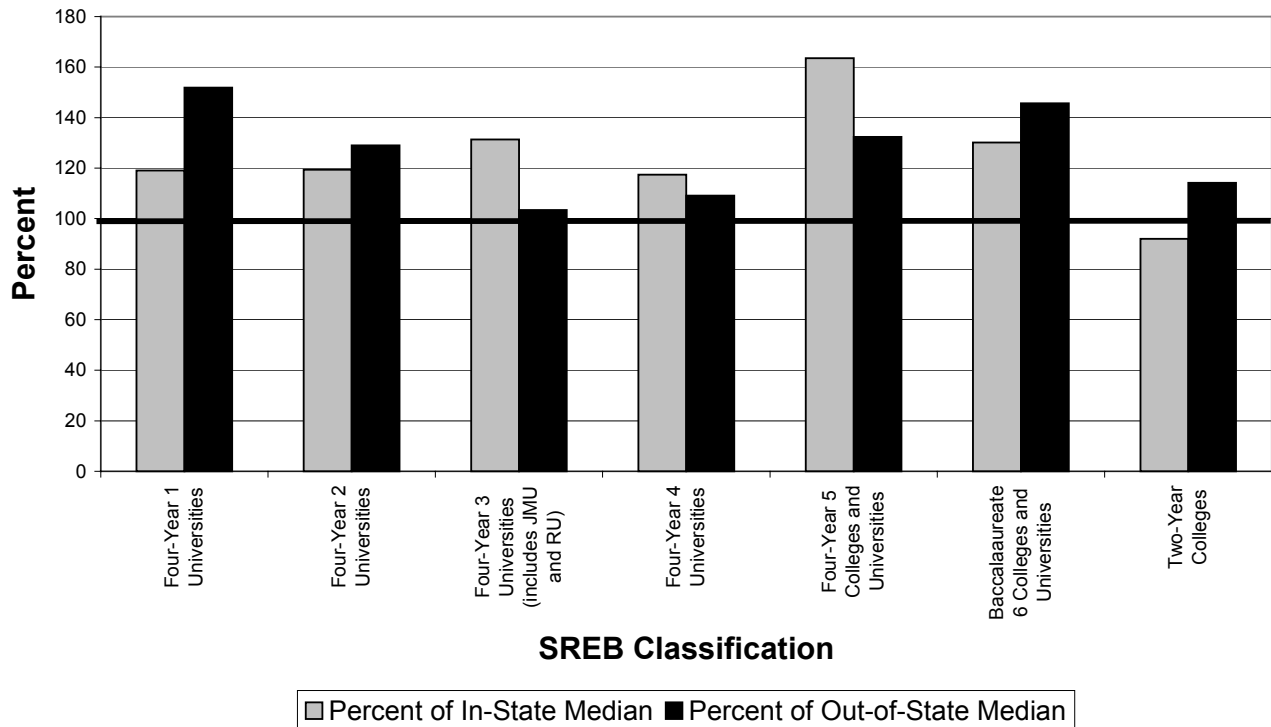
Since 1982-83, in-state undergraduate student charges at JMU rose 166 percent while median charges in the region went up 211 percent. JMU's tuition and fees are now 151 percent (down from 159 percent in 1999-00) of the SREB regional median for Four-Year 3 institutions.

JMU's tuition and fees are considerably higher than the SREB median – and have been for almost twenty years. In 2000-01, JMU's in-state tuition and required fees were \$1,354 above the regional median for comparable institutions.

Virginia Highlights
Percent of SREB Median Tuition and Fees by Residence
2000-01

SREB Classification	Percent of In-State Median	Percent of Out-of-State Median
Four-Year 1 Universities	119	152
Four-Year 2 Universities	119	129
Four-Year 3 Universities (includes JMU and RU)	131	103
Four-Year 4 Universities	117	109
Four-Year 5 Colleges and Universities	164	132
Baccalaureate 6 Colleges and Universities	130	146
Two-Year Colleges	92	114

Percent Of SREB Median Tuition And Fees By Residence, 2000-01



2.3 State Trends

Among the state's fifteen four-year colleges and universities, JMU's in-state tuition ranks 14th highest, required fees ranks 2nd, and room and board ranks 3rd. Total in-state tuition, required fees, and room and board ranks 3rd. JMU's out-of-state total cost ranks 8th.

In-State and Out-of-State Undergraduate Tuition, Required Fees And Room and Board for Virginia's State-Supported Institutions Of Higher Education, 2001-02

Rank	IS Tuition		OS Tuition		Required Fees		Room and Board		Total IS		Total OS	
1	UVA	\$3,144	UVA	\$17,176	VMI	\$3,334	CNU	\$5,750	VMI	\$11,132	UVA	\$23,238
2	VMI	\$2,960	CWM	\$15,380	JMU	\$2,508	MWC	\$5,692	CWM	\$10,080	CWM	\$23,108
3	VPI	\$2,828	VMI	\$14,028	CWM	\$2,428	JMU	\$5,678	JMU	\$9,772	VMI	\$22,200
4	VCU	\$2,533	VCU	\$12,713	LC	\$2,214	VSU	\$5,594	GMU	\$9,353	VCU	\$19,210
5	GMU	\$2,418	VPI	\$11,652	ODU	\$1,780	GMU	\$5,561	ODU	\$9,238	GMU	\$18,257
6	CWM	\$2,352	GMU	\$11,322	VSU	\$1,724	NSU	\$5,466	UVA	\$9,206	ODU	\$17,608
7	ODU	\$2,242	ODU	\$10,612	NSU	\$1,585	VCU	\$5,355	LC	\$9,131	VPI	\$16,520
8	MWC	\$2,146	UVAW	\$8,968	UVAW	\$1,540	CWM	\$5,300	MWC	\$9,032	JMU	\$16,284
9	LC	\$2,012	MWC	\$8,816	RU	\$1,440	RU	\$5,233	VCU	\$9,030	MWC	\$15,702
10	CNU	\$1,952	NSU	\$8,357	GMU	\$1,374	ODU	\$5,216	VSU	\$8,906	UVAW	\$15,532
11	UVAW	\$1,930	JMU	\$8,098	CNU	\$1,200	UVAW	\$5,024	CNU	\$8,902	NSU	\$15,408
12	RU	\$1,629	VSU	\$8,014	MWC	\$1,194	UVA	\$4,970	NSU	\$8,590	VSU	\$15,332
13	VSU	\$1,588	CNU	\$7,974	VCU	\$1,142	LC	\$4,905	UVAW	\$8,494	CNU	\$14,924
14	JMU	\$1,586	RU	\$7,768	UVA	\$1,092	VMI	\$4,838	RU	\$8,302	LC	\$14,851
15	NSU	\$1,539	LC	\$7,732	VPI	\$836	VPI	\$4,032	VPI	\$7,696	RU	\$14,441

Source: SCHEV Report on 2001-02 Tuition and Fees, June 20, 2001.

NOTES:

- All required fees listed are for general undergraduate students, living both on- and off-campus and, therefore, exclude any special fees for specific curriculums or special charges associated with dormitory living, such as room and board.
- Room and board charges are weighted averages for double occupancy rooms.
- Old Dominion University charges a per credit hour rate to all undergraduate and graduate students. The full-time charges for undergraduate tuition and required fees are based on 30 regular session credit hours, 15 hours per semester.
- At Virginia Military Institute, all students are required to live on post; therefore, room, board and laundry fees are also required fees.

2001-02 Full-Time In-State Undergraduate Student Charges

Institution	Tuition and Mandatory Fees	Percent Change From 00-01	Room and Board	Percent Change From 00-01	Total	Percent Change From 00-01
GMU	\$3,792	0.6%	\$5,561	2.8%	\$9,353	1.9%
ODU	4,022	2.7%	5,216	2.5%	9,238	2.4%
UVA	4,236	1.8%	4,970	4.3%	9,206	3.1%
VCU	3,675	0.7%	5,355	4.8%	9,030	3.1%
VPI	3,664	0.7%	4,032	2.0%	7,696	1.3%
CWM	4,780	2.0%	5,300	4.0%	10,080	3.0%
CNU	3,152	1.8%	5,750	7.5%	8,902	5.4%
UVA-Wise	3,470	4.2%	5,024	4.2%	8,494	4.2%
JMU	4,094	2.4%	5,678	3.2%	9,772	2.8%
LC	4,226	5.6%	4,905	1.5%	9,131	3.3%
MWC	3,340	2.9%	5,692	4.5%	9,032	3.9%
NSU	3,124	1.8%	5,466	3.8%	8,590	3.0%
RU	3,069	4.0%	5,233	6.0%	8,302	5.3%
VMI	6,294	2.4%	4,838	6.0%	11,132	3.9%
VSU	3,312	2.6%	5,594	5.3%	8,906	4.3%
VCCS	1,159	0.0%	N/A	N/A	1,159	0.0%
Doct. Avg.	4,028	1.5%	5,027	4.0%	9,101	2.8%
Comp. Avg.	3,787	3.1%	5,353	4.7%	9,140	4.0%
Avg.-All *	3,883	2.4%	5,241	4.4%	9,124	3.5%

Source: SCHEV Report on 2001-02 Tuition and Fees, June 20, 2001.

* Excludes VCCS

Annual increases in Virginia for in-state tuition and required fees from 2000-01 to 2001-02 ranged from 0.0 percent at Virginia Community College System to 5.6 percent at Longwood College. JMU's increase of 2.4 percent was 0.7 percent below the comprehensive average and tied for seventh highest out of fourteen senior institutions.

2001-02 Full-Time Out-of-State Undergraduate Student Charges

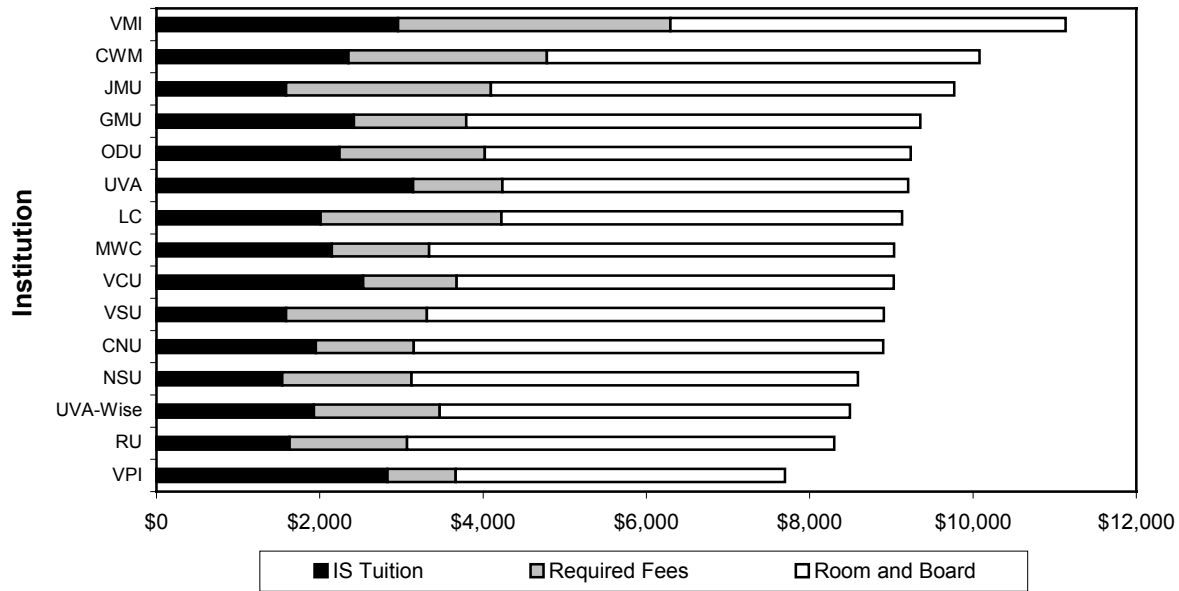
Institution	Tuition & Mandatory Fees 01-02	Percent Change From 00-01	Room & Board 01-02	Percent Change From 00-01	Total Out-of-State 01-02	Percent Change From 00-01
GMU	\$12,696	0.7%	\$5,561	2.8%	\$18,257	1.3%
ODU	12,392	2.9%	5,216	2.5%	17,608	2.8%
UVA	18,268	4.9%	4,970	4.3%	23,238	4.8%
VCU	13,855	3.8%	5,355	8.1%	19,210	5.0%
VPI	12,488	3.0%	4,032	2.0%	16,520	2.7%
CWM	17,808	5.2%	5,300	4.0%	23,108	4.9%
CNU	9,174	0.6%	5,750	7.5%	14,924	3.2%
UVA-Wise	10,508	7.0%	5,024	4.2%	15,532	6.1%
JMU	10,606	7.7%	5,678	3.2%	16,284	6.1%
LC	9,946	5.0%	4,905	1.5%	14,851	3.8%
MWC	10,010	3.5%	5,692	4.5%	15,702	3.8%
NSU	9,942	9.6%	5,466	3.8%	15,408	7.5%
RU	9,208	3.9%	5,233	6.0%	14,441	4.6%
VMI	17,362	5.6%	4,838	6.0%	22,200	5.7%
VSU	9,738	5.8%	5,594	5.3%	15,332	5.7%
VCCS	5,175	1.2%	N/A	N/A	5,175	1.2%
Doct. Avg.	14,585	3.6%	5,072	4.0%	19,657	3.7%
Comp. Avg.	10,722	5.4%	5,353	4.7%	16,075	5.2%
Avg.-All*	12,267	4.6%	5,241	4.4%	17,508	4.5%

Source: SCHEV Report on 2001-02 Tuition and Fees, June 20, 2001.

* Excludes VCCS

Annual increases in Virginia for out-of-state tuition and required fees from 2000-01 to 2001-02 for the senior institutions ranged from 0.6 percent at Christopher Newport University to 9.6 percent at Norfolk State University. James Madison University's increase, 7.7 percent, was the second highest of the senior institutions. Annual increases in Virginia for out-of-state tuition, required fees, and room and board for the senior institutions ranged from 1.3 percent for George Mason University to 7.5 percent at Norfolk State University.

VA Public In-State Charges, 2001-02 Combined Tuition/Fees, Room/Board



The following page contains a table and graph that illustrate the ability of the average Virginian to afford higher education at one of the Commonwealth's public colleges or universities. Data on median state undergraduate tuition and fees, Virginia per capita disposable income and the percent of per capita income represented by tuition and fees are given in the following table. The percent is then shown as a graph below the table.

The data demonstrate that in 2000-01 a college education at a public institution became more affordable for the average state resident. After growing 4.6 percent between 1990-91 and 1994-95, the percentage decreased by 6.6 percent since 1994-95.

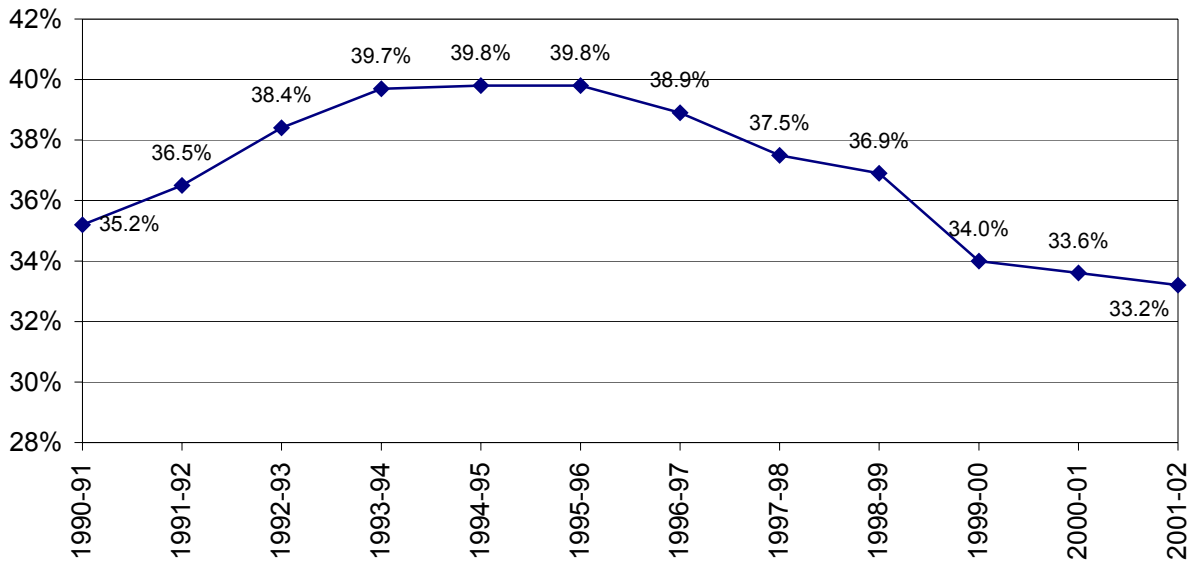
An increase in general fund support for higher education is the primary reason for the observed moderation. Between 1990-91 and 1994-95 the median in-state tuition and fees increased by 30.1 percent while the per capita disposable income increased by 15.1 percent. Between 1994-95 and 2000-01 the median in-state tuition and fees grew by 10.0 percent while the per capita income grew by more than 31.9 percent. The extraordinarily high tuition and fee increases in 1992-93 and 1993-94 were primarily the result of the large reductions to state general fund appropriations to higher education that are described in the next section of this paper. The moderation of this trend is attributable to the tuition freeze that has been in place since 1996 and the 20 percent decrease in tuition in 1999-00.

**Median In-State Tuition and All Required Fees
as Percent of Per Capita Disposable Income, 1989-90 to 2000-01**

Academic Year	Median Virginia In-State Undergraduate Tuition & Fees	Virginia Disposable Per Capita Income	Tuition & Fees as Percent of Per Capita Disposable Income*
1990-91	\$6,308	\$17,920	35.2%
1991-92	\$6,734	\$18,449	36.5%
1992-93	\$7,389	\$19,242	38.4%
1993-94	\$7,910	\$19,924	39.7%
1994-95	\$8,208	\$20,623	39.8%
1995-96	\$8,452	\$21,236	39.8%
1996-97	\$8,544	\$21,964	38.9%
1997-98	\$8,651	\$23,069	37.5%
1998-99	\$8,832	\$23,935	36.9%
1999-00	\$8,502	\$25,006	34.0%
2000-01	\$8,694	\$25,875	33.6%
2001-02	\$9,032	\$27,205	33.2%

*Disposable per capita income is the income that is available to persons for spending and saving.

**Median Total Undergraduate Charges
As a Percent of Per Capita Disposable Income**



2.4 Tuition and Fee History

JMU Tuition, Fee, and Room and Board Charges 1992-93 to 2001-02

	92/93	93/94	94/95	95/96	96/97	97/98	98/99	99/00	00/01	01/02
IN-STATE										
Tuition & Fees	\$1,742	\$1,830	\$1,878	\$1,932	\$1,940	\$1,940	\$1,982	\$1,586	\$1,586	\$1,586
Comp. Fee	1,834	1,968	2,022	2,082	2,164	2,208	2,274	2,340	2,414	2,508
Total Commuter	3,576	3,798	3,900	4,014	4,104	4,148	4,256	3,926	4,000	4,094
Room & Board*	4,284	4,400	4,544	4,680	4,884	4,994	5,264	5,392	5,504	5,678
Total On-Campus	7,860	8,198	8,444	8,694	8,988	9,142	9,520	9,318	9,504	9,772
OUT-OF-STATE										
Tuition & Fees	5,406	5,682	5,972	6,212	6,416	6,608	6,982	7,192	7,436	8,098
Comp. Fee	1,834	1,968	2,022	2,082	2,164	2,208	2,274	2,340	2,414	2,508
Total Commuter	7,240	7,650	7,994	8,294	8,580	8,816	9,256	9,532	9,850	10,606
Room & Board*	4,284	4,400	4,544	4,680	4,884	4,994	5,264	5,392	5,504	5,678
Total On-Campus	11,524	12,050	12,538	12,974	13,464	13,810	14,520	14,924	15,354	16,284

Source: JMU Budget Office

*Based on 19 meal plan

JMU Tuition and Fee History 1992-93 to 2001-02

