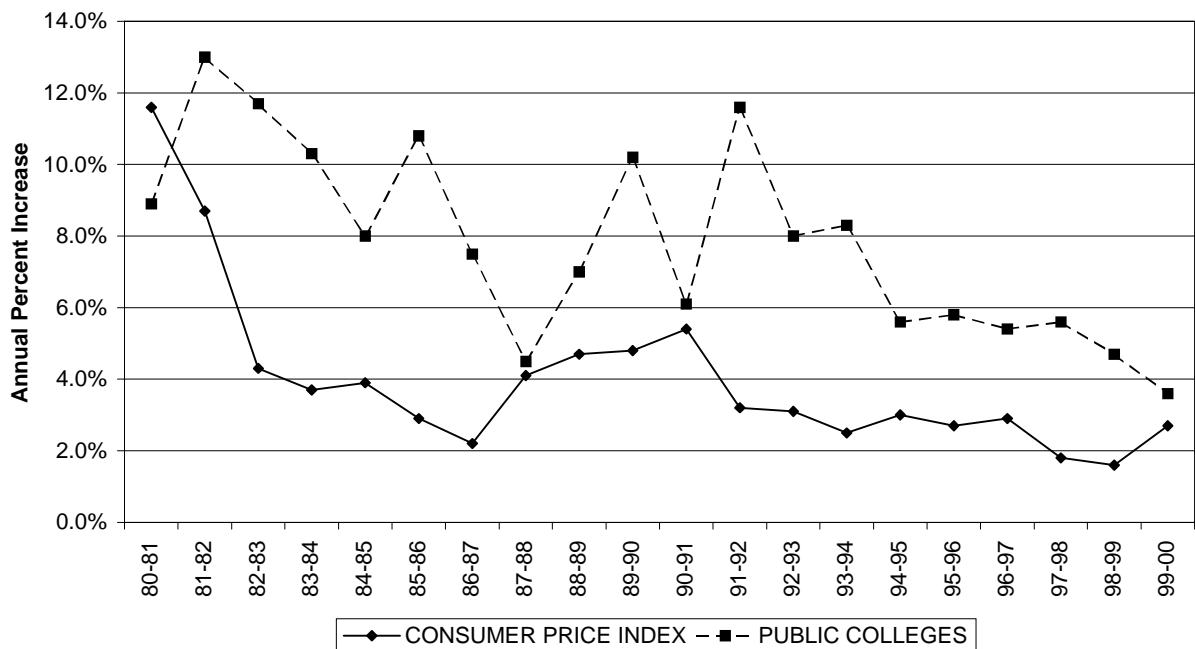


## 2.0 TUITION AND FEES

### 2.1 National Trends

Concerns over the rising costs of attending colleges and universities have heightened in the past few years and are influencing state policies regarding tuition and fees. Since 1981-82 the average cost of attending colleges and universities has increased faster than the rate of inflation as measured by the Consumer Price Index (CPI).

**Changes in College Tuition  
Compared With Consumer Price Index**



Factors involved in rising costs for higher education include:

- Faculty salaries rising faster than general inflation,
- Relative decline in federal student grant programs,
- High cost of institutionally funded financial aid,
- Migration of students from low to high cost disciplines,
- Administrative support and governmentally imposed requirements have risen,
- The need to keep pace with new technologies,
- Federal funding for research has not kept up with institutional expenditures for research,
- Program expansion, and
- New construction or renovation.

Expanding enrollments in the 1960s and 70s permitted colleges and universities to spread fixed costs and increase total expenditures (15 percent per year from 1970 to 1975) while holding per student expenditure increases to 4 percent annually. In the decade of the 1980s, the rate of increase in tuition did not come down as fast as the CPI because — at least in part — students were paying a larger share of the costs of their education. In the public sector, more than half of the added tuition revenue from 1982 to 2000 represents increases in the share of educational costs borne by students to compensate for decreases in state general fund support.

Virginia's tuition and fees are much higher than corresponding national and regional charges. The Commonwealth's position as a high tuition state is reflected in national comparisons that rank Virginia seventh highest among the fifty states. This is an improvement from previous years when Virginia was ranked as high as second. The lower ranking reflects the tuition freeze initiated by Governor Allen in 1996 and funded by the 1996 through 2000 General Assemblies.

No public policy exists to guide the Commonwealth as to the appropriate share of educational costs to be borne by the general fund versus in-state students and their parents. The state's fiscal problems in the early 1990's led to an abandonment of its long-standing policy that in-state students cover only 25 percent of their educational costs. The Joint Subcommittee on Higher Education Funding Policies intends to address this subject in the upcoming year.

The following pages contain two tables (pages 4 and 5) and two graphics (pages 6 and 7) comparing Virginia's and JMU's positions on tuition and fees relative to national data from the other forty-nine states. The two tables on pages 4 and 5 compare the rate of increase in undergraduate tuition and required fees, by state, for state colleges and universities for in-state (page 4) and out-of-state (page 5) students. Virginia's four-year rate of increase in 1999-00 was 49<sup>th</sup> highest out of 50 states for in-state students and 47<sup>th</sup> highest for out-of-state students. Five years ago Virginia's ranking was 16<sup>th</sup> for in-state students and 14<sup>th</sup> for out-of-state students. In other words, tuition and fees increases in Virginia have moderated substantially in the last five years. The graphic on page 6 compares in-state undergraduate tuition and required fees by state. Virginia ranks tenth highest among the fifty states. In 1995-96 Virginia was ranked second. The graphic on page 7 compares JMU's tuition and fees to those of our SCHEV peer group. JMU ranks 14<sup>th</sup> highest out of 25 peer institutions. In 1999-00 JMU had the 11<sup>th</sup> highest tuition and fees.

The average tuition and required fees for in-state students at all Virginia public colleges and universities for 1999-00, the latest year for which national data are available, is \$3,658. This figure is \$638 above the national average of \$3,020 and is the tenth highest nationally.

JMU's 2000-01 tuition and required fees are \$4,000. This figure is below our peer group average of \$6,209. However, when JMU's figure is compared with the 19 other publicly funded peer institutions, it ranks ninth highest, a change from tenth in 1999-00 and sixth in 1998-99. The public average, including JMU, is \$3,520.

Virginia's one-year rate of change for in-state tuition and required fees for 1999-00 was -11.6 percent. This was 15.4 percent below the national average of 3.8 percent. For out-of-state students, Virginia's average was 0.9 percent — 3.2 percent below the national average of 4.1 percent.

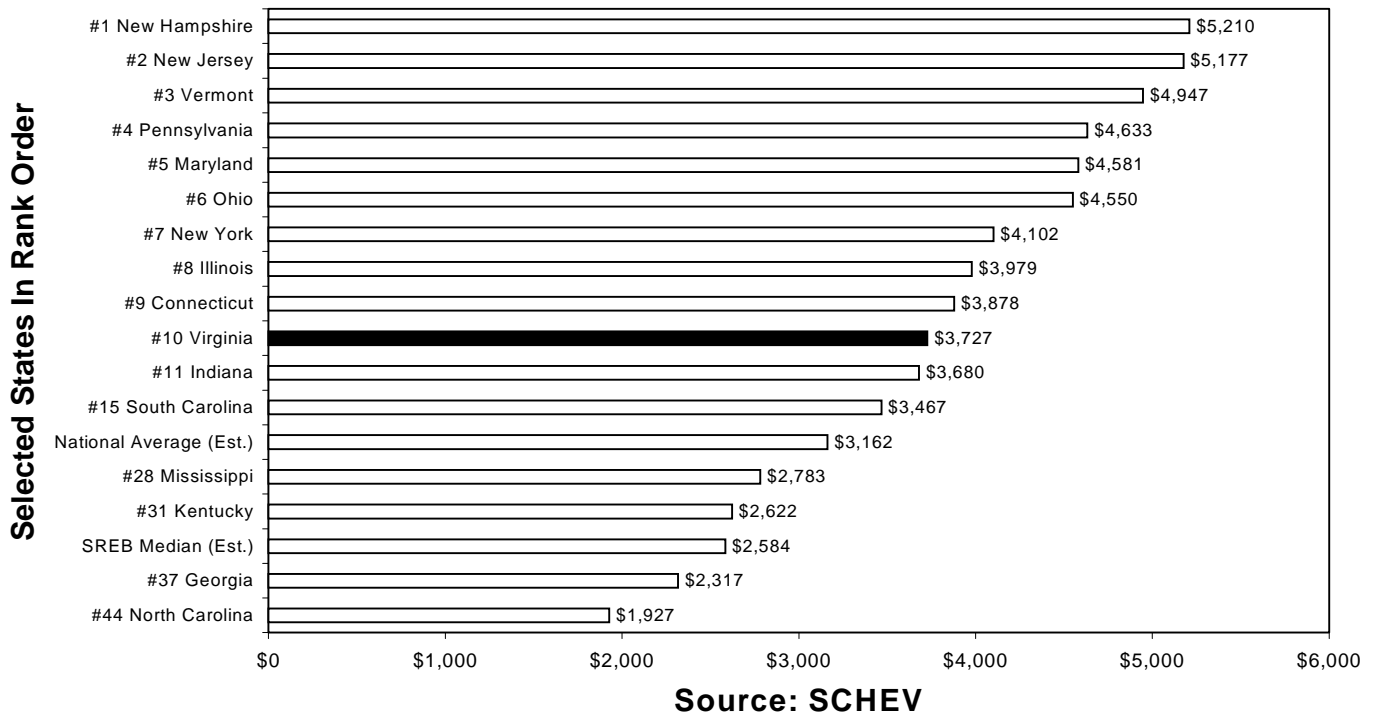
## **RESIDENT UNDERGRADUATE TUITION AND REQUIRED FEES (STATE AVERAGES) COLLEGES AND STATE UNIVERSITIES**

	1995-96	1996-97	1997-98	1998-99	1999-00	Percentage Increase	
						One Year	Four Year
Alabama	2,193	2,359	2,489	2,572	2,877	7.8%	31.2%
Arizona	1,950	2,009	2,058	2,158	2,259	4.7%	15.8%
Arkansas	2,100	2,110	2,305	2,615	2,801	7.1%	44.5%
California	1,900	1,923	1,957	1,878	1,847	-1.7%	-2.8%
Colorado	1,964	2,109	2,180	2,238	2,302	2.9%	17.2%
Connecticut	3,191	3,505	3,611	3,670	3,747	2.1%	17.4%
Florida	1,795	1,888	1,994	2,114	2,233	5.6%	24.4%
Georgia	1,828	1,932	2,059	2,144	2,239	4.4%	22.5%
Idaho	1,612	1,760	1,979	2,156	2,340	8.5%	45.2%
Illinois	3,058	3,203	3,392	3,500	3,844	9.8%	25.7%
Indiana	2,988	3,179	3,305	3,438	3,556	3.4%	19.0%
Iowa	2,558	2,650	2,752	2,860	2,988	4.5%	16.8%
Kansas	1,952	2,012	2,096	2,165	2,216	2.4%	13.6%
Kentucky	2,011	2,121	2,187	2,339	2,533	8.3%	26.0%
Louisiana	2,044	2,055	2,117	2,183	2,222	2.2%	8.7%
Maine	2,955	3,028	3,192	3,320	3,393	2.2%	14.8%
Maryland	3,398	3,702	4,003	4,228	4,426	4.7%	30.3%
Massachusetts	3,510	3,453	3,433	3,337	3,206	-3.9%	-8.7%
Michigan	3,213	3,327	3,456	3,603	3,375	-6.3%	5.0%
Minnesota	2,618	2,674	2,674	2,931	3,076	4.9%	17.5%
Mississippi	2,352	2,370	2,415	2,689	2,689	0.0%	14.3%
Missouri	2,442	2,622	2,753	2,870	3,019	5.2%	23.7%
Montana	2,198	2,276	2,468	2,677	2,823	5.5%	28.5%
Nebraska	1,950	2,042	2,175	2,336	2,500	7.0%	28.2%
Nevada	1,830	1,920	1,995	2,070	2,145	3.6%	17.2%
New Hampshire	3,679	3,860	4,331	4,765	5,034	5.6%	36.8%
New Jersey	3,684	3,983	4,336	4,708	5,002	6.3%	35.8%
New Mexico	1,484	1,514	1,514	1,708	1,762	3.2%	18.7%
New York	3,739	3,831	3,866	3,917	3,963	1.2%	6.0%
North Carolina	1,551	1,618	1,700	1,757	1,862	6.0%	20.1%
North Dakota	1,907	2,218	2,525	2,623	2,709	3.3%	42.0%
Ohio	3,589	3,764	3,927	4,171	4,396	5.4%	22.5%
Oklahoma	1,650	1,645	1,830	1,837	1,944	5.8%	17.9%
Oregon	3,015	3,198	3,275	3,305	3,362	1.7%	11.5%
Pennsylvania	3,945	4,126	4,265	4,302	4,476	4.0%	13.5%
Rhode Island	2,969	2,999	3,073	3,149	3,260	3.5%	9.8%
South Carolina	3,010	3,010	3,270	3,350	3,350	0.0%	11.3%
South Dakota	2,544	2,613	2,768	3,008	3,258	8.3%	28.1%
Tennessee	1,869	1,940	2,233	2,441	2,622	7.4%	40.3%
Texas	1,746	2,012	2,289	2,467	2,610	5.8%	49.5%
Utah	1,854	1,863	1,935	1,986	2,042	2.8%	10.1%
Vermont	4,040	4,248	4,428	4,592	4,780	4.1%	18.3%
Virginia	3,959	3,997	4,058	4,139	3,658	-11.6%	-7.6%
Washington	2,342	2,441	2,537	2,652	2,769	4.4%	18.2%
West Virginia	2,032	2,101	2,185	2,280	2,393	5.0%	17.8%
Wisconsin	2,353	2,471	2,683	2,827	3,027	7.1%	28.6%
<b>National Average</b>	5.5%	4.4%	5.3%	4.7%	3.6%	3.8%	20.5%
<b>Virginia Ranking</b>	2	3	5	7	10	46	49

**NONRESIDENT UNDERGRADUATE TUITION AND REQUIRED FEES  
(STATE AVERAGES) COLLEGES AND STATE UNIVERSITIES**

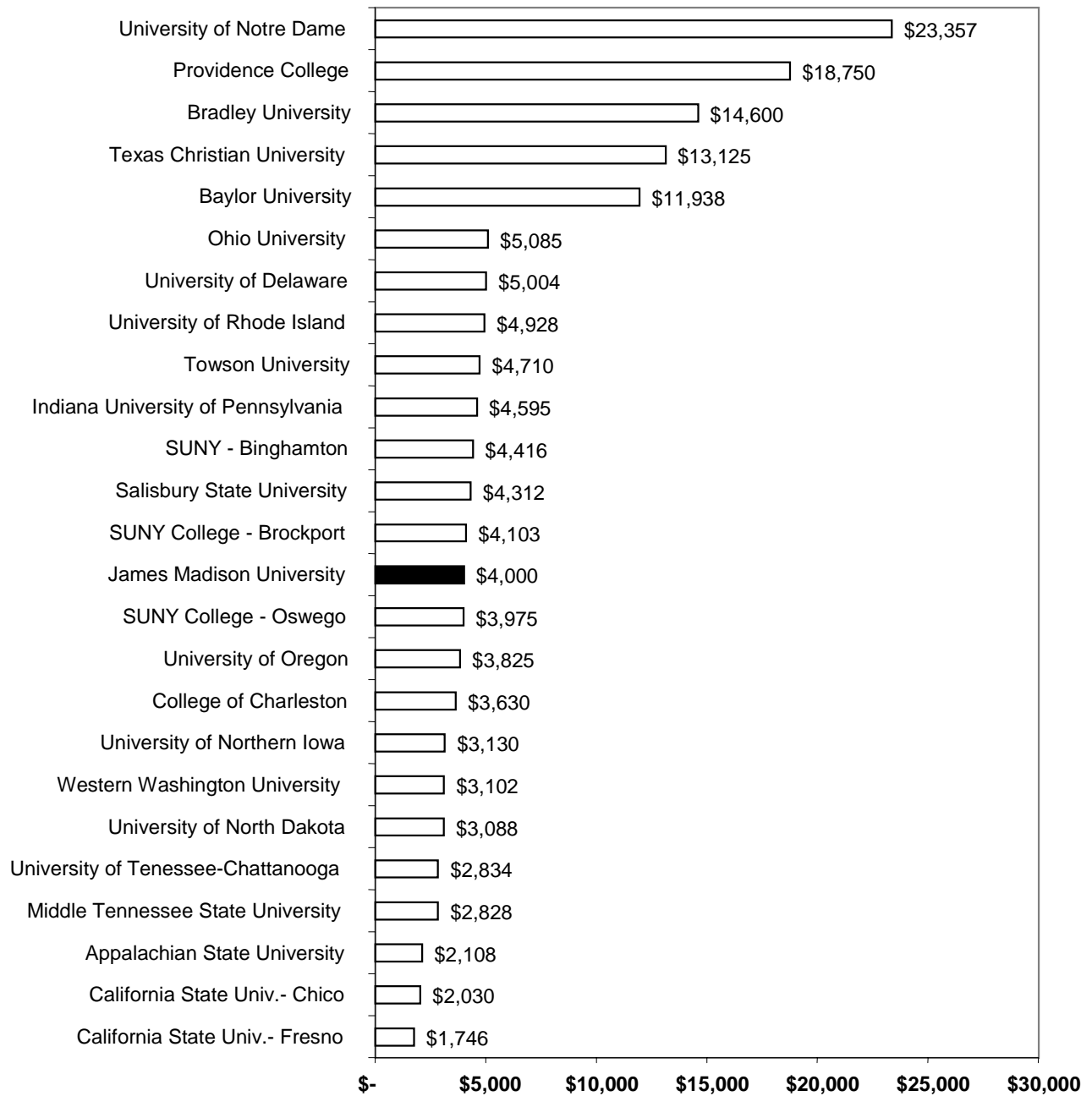
	1995-96	1996-97	1997-98	1998-99	1999-00	Percentage Increase	
						One Year	Four Year
Alabama	3,617	3,979	4,753	4,905	5,567	8.9%	53.9%
Arizona	7,572	7,951	8,267	8,592	8,893	3.5%	17.4%
Arkansas	3,791	4,403	4,734	5,280	5,663	7.3%	49.4%
California	9,280	9,303	8,791	9,259	9,965	7.6%	7.4%
Colorado	6,758	7,379	7,645	7,916	8,074	2.0%	19.5%
Connecticut	8,283	8,849	9,089	9,179	9,287	1.2%	12.1%
Florida	6,697	7,133	7,911	8,769	9,222	5.2%	37.7%
Georgia	5,038	5,811	6,520	7,364	7,663	4.1%	52.1%
Idaho	7,000	7,270	7,909	8,216	8,400	2.2%	20.0%
Illinois	7,573	7,933	8,295	8,537	8,284	-3.0%	9.4%
Indiana	7,524	8,075	8,443	8,833	9,200	4.2%	22.3%
Iowa	6,634	6,868	7,136	7,415	7,748	4.5%	16.8%
Kansas	6,376	6,568	6,834	7,013	7,179	2.4%	12.6%
Kentucky	5,537	5,753	5,959	6,396	6,842	7.0%	23.6%
Louisiana	4,490	4,549	5,435	6,448	7,393	8.8%	64.7%
Maine	6,915	7,078	7,452	7,700	7,883	2.4%	14.0%
Maryland	6,758	7,611	8,713	9,009	9,600	6.6%	42.0%
Massachusetts	8,137	8,107	8,519	9,227	9,545	3.4%	17.3%
Michigan	7,532	7,915	8,026	8,340	8,307	-0.4%	10.3%
Minnesota	5,365	5,554	5,554	5,971	6,406	7.3%	19.4%
Mississippi	4,936	4,959	4,999	5,631	5,631	0.0%	14.1%
Missouri	4,608	4,932	5,170	5,391	5,674	5.3%	23.1%
Montana	6,105	6,357	6,838	7,358	7,726	5.0%	26.5%
Nebraska	3,435	3,662	3,873	4,106	4,364	6.3%	27.0%
Nevada	6,730	7,020	7,430	7,840	8,492	8.3%	26.2%
New Hampshire	9,169	9,520	9,831	10,065	10,344	2.8%	12.8%
New Jersey	5,687	6,258	6,864	7,535	8,061	7.0%	41.7%
New Mexico	5,452	5,602	5,602	6,205	6,440	3.8%	18.1%
New York	8,639	8,731	8,765	8,817	8,863	0.5%	2.6%
North Carolina	8,232	8,604	8,661	8,857	9,021	1.9%	9.6%
North Dakota	4,758	5,066	5,507	5,737	5,952	3.8%	25.1%
Ohio	8,101	8,385	8,858	9,420	9,960	5.7%	22.9%
Oklahoma	3,975	3,970	4,313	4,320	4,599	6.5%	15.7%
Oregon	7,626	8,174	8,462	8,706	9,090	4.4%	19.2%
Pennsylvania	8,919	9,328	9,624	9,624	9,244	-3.9%	3.6%
Rhode Island	7,489	7,519	7,729	7,929	8,185	3.2%	9.3%
South Carolina	6,020	6,020	6,020	6,450	6,610	0.0%	9.8%
South Dakota	4,824	5,607	6,300	6,683	7,077	5.9%	46.7%
Tennessee	5,999	6,276	6,829	7,275	7,810	7.4%	30.2%
Texas	7,506	8,432	8,709	8,863	9,076	2.4%	20.9%
Utah	5,541	5,550	5,730	5,886	6,058	2.9%	9.3%
Vermont	8,552	9,008	9,408	9,860	10,276	4.2%	20.2%
Virginia	9,575	9,714	9,937	10,193	10,289	0.9%	7.5%
Washington	8,289	8,626	8,972	9,345	9,743	4.3%	17.5%
West Virginia	4,977	5,151	5,390	5,575	5,791	3.9%	16.3%
Wisconsin	7,488	7,935	8,625	9,109	9,891	8.6%	32.1%
<b>National Average</b>	6.5%	4.9%	5.0%	5.0%	3.8%	4.1%	22.4%
<b>Virginia Ranking</b>	1	1	1	1	2	40	47

## 2000-01 Estimated In-State Tuition & Fees Public Comprehensives



Note: SREB and National tuition and fees were estimated to increase by 4.7 percent during 2000-01.

## 2000-01 SCHEV Peer Group: In-State Tuition and Required Fees



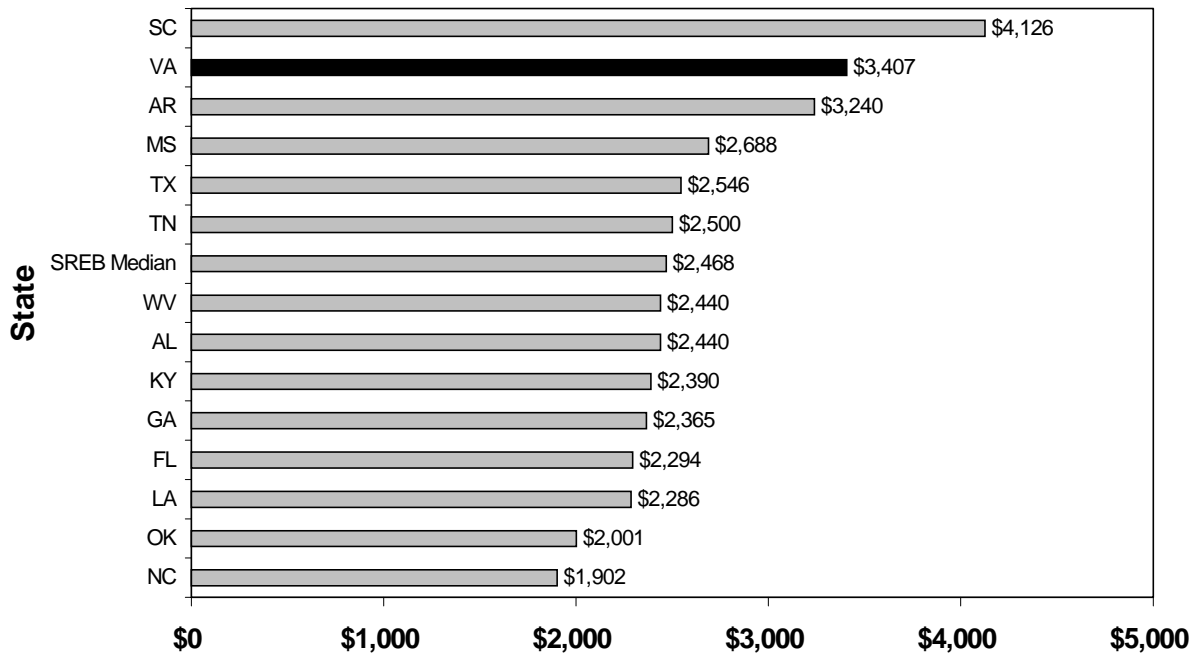
**Average = \$6,209; Public Average = \$3,520**

## 2.2 Regional Trends

Virginia is part of the Southern Regional Education Board (SREB) — the nation's first interstate compact for education. SREB was created in 1948 at the request of southern governors and acts as a clearinghouse for information on trends and issues that affect education in the south.

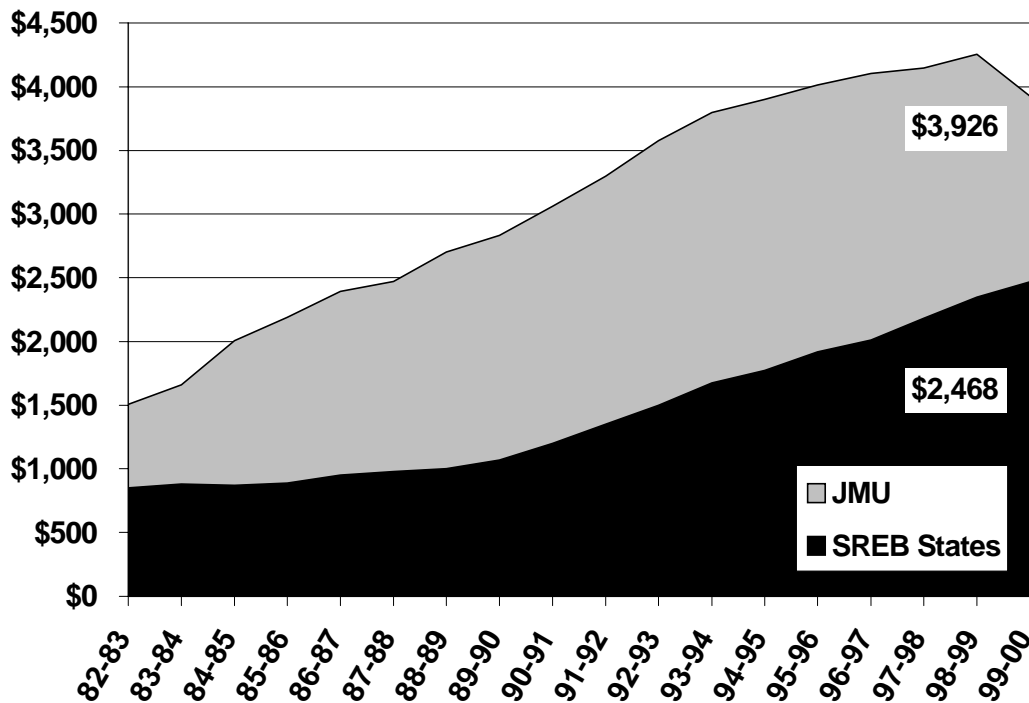
Colleges and universities are classified according to SREB definitions based on institutional size and degree programs. Undergraduate tuition and fees charged students in each state's universities and colleges are compared with specific groups based on SREB definitions. For example, James Madison University is considered to be a Four-Year 3 institution. A Four-Year 3 institution awards at least 100 doctoral, masters, education specialist, or post-master's certificates and degrees distributed among at least 10 broad program areas. JMU and Radford are the Four-Year 3 institutions in the Virginia system of higher education.

**1999-00 In-State Undergraduate Tuition and Fees  
Four-Year 3 Institutions**



Source: Southern Regional Education Board

**In-State Tuition and Fees  
JMU & SREB States, 1982-83 to 1999-00**



Source: SREB

"Tuition and fees" refers to the annual tuition and mandatory fees charged all full-time undergraduate students. Mandatory fees do not include special fees assessed in particular programs; for example music, science laboratories, or nursing. Nor are other fees unique to given situations included; for example late registration fees or automobile registration fees. Mandatory fees do include health service fees, building use fees, student activity fees, and athletic fees where the fee is not optional for full-time students.

Tuition and fees for in-state undergraduate students at JMU increased more than the SREB median for Four-Year 3 institutions over the past ten years. Since 1982-83, in-state undergraduate student charges at JMU rose 161 percent while median charges in the region went up 190 percent. JMU's tuition and fees are now 159 percent (down from 181 percent in 1998-99) of the SREB regional median for Four-Year 3 institutions. In 1999-00, JMU's in-state tuition and required fees were \$1,458 above the regional median for comparable institutions.

**Virginia Highlights  
Percent of SREB Median Tuition and Fees by Residence  
1999-00**

SREB Classification	Percent of In-State Median	Percent of Out-of-State Median
Four-Year 1 Universities	128	154
Four-Year 2 Universities	122	137

Four-Year 3 Universities (includes JMU and RU)	138	103
Four-Year 4 Universities	122	110
Four-Year 5 Colleges and Universities	174	145
Baccalaureate 6 Colleges and Universities	131	145
Two-Year Colleges	100	113

## 2.3 State Trends

Among the state's fifteen four-year colleges and universities, JMU's in-state tuition ranks 14<sup>th</sup> highest, required fees ranks 2<sup>nd</sup>, and room and board ranks 1<sup>st</sup>. Total in-state tuition, required fees, and room and board ranks 3<sup>rd</sup>.

### In-State and Out-of-State Undergraduate Tuition, Required Fees And Room and Board for Virginia's State-Supported Institutions Of Higher Education, 2000-01

Rank	IS Tuition		OS Tuition		Required Fees		Room and Board		Total IS		Total OS	
1	UVA	\$3,144	UVA	\$16,393	VMI	\$3,188	<b>JMU</b>	<b>\$5,504</b>	VMI	\$10,712	UVA	\$22,176
2	VMI	\$2,960	CWM	\$14,599	<b>JMU</b>	<b>\$2,414</b>	MWC	\$5,448	CWM	\$9,783	CWM	\$22,030
3	VPI	\$2,828	VMI	\$13,246	CWM	\$2,335	GMU	\$5,411	<b>JMU</b>	<b>\$9,504</b>	VMI	\$20,998
4	VCU	\$2,533	VCU	\$12,226	LC	\$1,966	CNU	\$5,350	GMU	\$9,179	VCU	\$18,298
5	GMU	\$2,418	VPI	\$11,316	ODU	\$1,674	VSU	\$5,310	ODU	\$9,006	GMU	\$18,023
6	CWM	\$2,352	GMU	\$11,262	VSU	\$1,640	NSU	\$5,267	UVA	\$8,927	ODU	\$17,136
7	ODU	\$2,242	ODU	\$10,372	NSU	\$1,530	CWM	\$5,096	LC	\$8,836	VPI	\$16,082
8	MWC	\$2,146	MWC	\$8,576	UVAW	\$1,400	ODU	\$5,090	MWC	\$8,694	<b>JMU</b>	<b>\$15,354</b>
9	LC	\$2,037	UVAW	\$8,424	GMU	\$1,350	VCU	\$4,955	VCU	\$8,605	MWC	\$15,124
10	CNU	\$1,952	CNU	\$7,974	RU	\$1,321	RU	\$4,937	VSU	\$8,538	UVAW	\$14,644
11	UVAW	\$1,930	VSU	\$7,560	CNU	\$1,144	LC	\$4,833	CNU	\$8,446	VSU	\$14,510
12	RU	\$1,629	RU	\$7,542	VCU	\$1,117	UVAW	\$4,820	NSU	\$8,336	CNU	\$14,468
13	VSU	\$1,588	NSU	\$7,539	MWC	\$1,100	UVA	\$4,767	UVAW	\$8,150	NSU	\$14,336
14	<b>JMU</b>	<b>\$1,586</b>	LC	\$7,508	UVA	\$1,016	VMI	\$4,564	RU	\$7,887	LC	\$14,307
15	NSU	\$1,539	<b>JMU</b>	<b>\$7,436</b>	VPI	\$812	VPI	\$3,954	VPI	\$7,594	RU	\$13,800

Source: SCHEV Report on 2000-01 Tuition and Fees, June 20, 2000.

#### NOTES:

1. All required fees listed are for general undergraduate students, living both on- and off-campus and, therefore, exclude any special fees for specific curriculums or special charges associated with dormitory living, such as room and board.
2. Room and board charges are weighted averages for double occupancy rooms.
3. Old Dominion University charges a per credit hour rate to all undergraduate and graduate students. The full-time charges for undergraduate tuition and required fees are based on 30 regular session credit hours, 15 hours per semester.
4. At Virginia Military Institute, all students are required to live on post; therefore, room, board and laundry fees are also required fees.

## 2000-01 Full-Time In-State Undergraduate Student Charges

Institution	Tuition and Mandatory Fees	Percent Change From 99-00	Room and Board	Percent Change From 99-00	Total	Percent Change From 99-00
GMU	\$3,768	0.3%	\$5,411	0.8%	\$9,179	0.6%
ODU	3,916	3.2%	5,090	2.3%	9,006	2.7%
UVA	4,160	0.7%	4,767	3.9%	8,927	2.4%
VCU	3,650	1.8%	4,955	2.4%	8,605	2.1%
VPI	3,640	0.6%	3,954	4.6%	7,594	2.6%
CWM	4,687	1.7%	5,096	4.1%	9,783	2.9%
CNU	3,096	1.6%	5,350	8.1%	8,446	5.6%
UVA-Wise	3,330	4.3%	4,820	2.9%	8,150	3.5%
JMU	4,000	1.9%	5,504	2.1%	9,504	2.0%
LC	4,003	2.0%	4,833	4.4%	8,836	3.3%
MWC	3,246	1.3%	5,448	2.8%	8,694	2.3%
NSU	3,069	1.5%	5,267	3.0%	8,336	2.4%
RU	2,950	2.2%	4,937	3.5%	7,887	3.0%
VMI	6,148	2.2%	4,564	4.3%	10,712	3.1%
VSU	3,228	4.6%	5,310	4.2%	8,538	4.4%
VCCS	1,159	0.0%	N/A	N/A	1,159	0.0%
Doct. Avg.	3,970	1.4%	4,879	2.9%	8,849	2.2%
Comp. Avg.	3,806	2.2%	5,123	3.4%	8,930	2.9%
Avg.-All	3,628	1.9%	5,020	3.5%	8,813	4.8%

Source: SCHEV Report on 2000-01 Tuition and Fees, June 20, 2000.

Annual increases in Virginia for in-state tuition and required fees from 1999-00 to 2000-01 for the senior institutions ranged from 0.0 percent at Virginia Community College System to 4.6 percent at Virginia State University. Annual increases in Virginia for the senior institutions in-state tuition, required fees, and room and board ranged from 0.6 percent at George Mason University to 5.6 percent at Christopher Newport University.

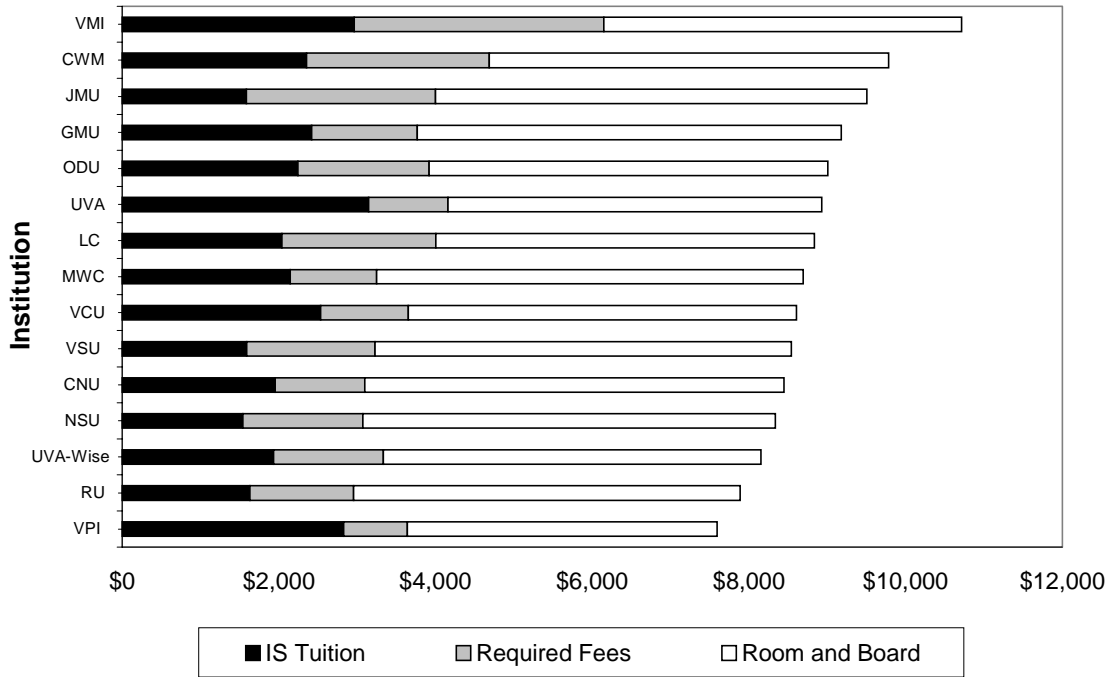
## 2000-01 Full-Time Out-of-State Undergraduate Student Charges

Institution	Tuition & Mandatory Fees 00-01	Percent Change From 99-00	Room & Board 00-01	Percent Change From 99-00	Total Out-of-State 00-01	Percent Change From 99-00
GMU	\$12,612	0.8%	\$5,411	0.8%	\$18,023	0.8%
ODU	12,046	5.8%	5,090	2.3%	17,136	4.7%
UVA	17,409	4.9%	4,767	3.9%	22,176	4.6%
VCU	13,343	2.3%	4,955	2.4%	18,298	2.3%
VPI	12,128	2.4%	3,954	4.6%	16,082	2.9%
CWM	16,934	3.0%	5,096	4.1%	22,030	3.3%
CNU	9,118	3.4%	5,350	8.1%	14,468	5.1%
UVA-Wise	9,286	5.8%	4,820	2.9%	14,644	4.8%
JMU	9,850	3.3%	5,504	2.1%	15,354	2.9%
LC	9,474	1.1%	4,833	4.4%	14,307	2.2%
MWC	9,676	0.4%	5,448	2.8%	15,124	1.3%
NSU	9,069	5.8%	5,267	3.0%	14,336	4.7%
RU	8,863	2.6%	4,937	3.5%	13,800	2.9%
VMI	16,434	6.3%	4,564	4.3%	20,998	5.9%
VSU	9,200	6.6%	5,310	4.2%	14,510	5.7%
VCCS	5,115	2.5%	N/A	N/A	5,115	2.5%
Doct. Avg.	11,799	3.0%	4,958	3.8%	16,801	3.6%
Comp. Avg.	10,108	3.3%	5,115	3.9%	15,282	3.9%
Avg.-All	11,285	3.2%	5,020	3.6%	16,025	3.5%

Source: SCHEV Report on 2000-01 Tuition and Fees, June 20, 2000.

Annual percent changes in Virginia for out-of-state tuition and required fees from 1999-00 to 2000-01 for the senior institutions ranged from 0.4 percent at Mary Washington College to 6.6 percent at Virginia State University. James Madison University's increase, 3.3 percent, was the eighth highest of the senior institutions. Annual increases in Virginia for out-of-state tuition, required fees, and room and board ranged from 0.8 percent for George Mason University to 5.9 percent at Virginia Military Institute.

### VA Public In-State Charges, 2000-01 Combined Tuition/Fees, Room/Board



The following page contains a table and graph that illustrate the ability of the average Virginian to afford higher education at one of the Commonwealth's public colleges or universities. Data on median state undergraduate tuition and fees, Virginia per capita disposable income and the percent of per capita income represented by tuition and fees are given in the following table. The percent is then shown as a graph below the table.

The data demonstrate that in 2000-01 a college education at a public institution became more affordable for the average state resident. After growing 6.9 percent between 1989-90 and 1994-95, the percentage decreased by 8.0 percent since 1994-95.

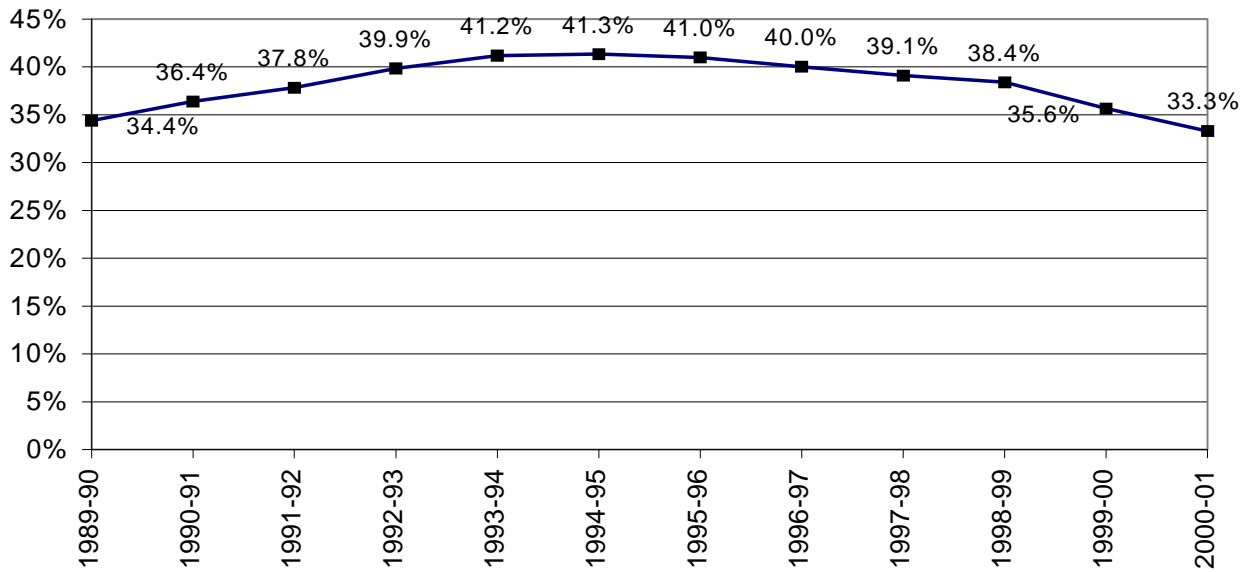
An increase in general fund support for higher education is the primary reason for the observed moderation. Between 1989-90 and 1994-95 the median in-state tuition and fees increased by 39.0 percent while the per capita disposable income increased by 15.7 percent. Between 1994-95 and 2000-01 the median in-state tuition and fees grew by 5.9 percent while the per capita income grew by more than 31.5 percent. The extraordinarily high tuition and fee increases in 1992-93 and 1993-94 were primarily the result of the large reductions to state general fund appropriations to higher education that are described in the next section of this paper. The moderation of this trend is attributable to the tuition freeze that has been in place since 1996 and the 20 percent decrease in tuition in 1999-00.

**Median Tuition and All Required Fees  
as Percent of Per Capita Disposable Income, 1989-90 to 2000-01**

Academic Year	Median Virginia Undergraduate Tuition & Fees	Virginia Disposable Per Capita Income	Tuition & Fees as Percent of DPCI*
1989-90	\$5,906	\$17,162	34.4%
1990-91	6,308	17,330	36.4%
1991-92	6,734	17,805	37.8%
1992-93	7,389	18,532	39.9%
1993-94	7,910	19,201	41.2%
1994-95	8,208	19,858	41.3%
1995-96	8,452	20,611	41.0%
1996-97	8,544	21,344	40.0%
1997-98	8,651	22,130	39.1%
1998-99	8,832	23,002	38.4%
1999-00	8,502	23,853	35.6%
2000-01	8,694	26,110	33.3%

\*Disposable per capita income is the income that is available to persons for spending and saving.

**Median Total Undergraduate Charges  
As a Percent of Per Capita Disposable Income**



## 2.4 Tuition and Fee History

### JMU Tuition, Fee, and Room and Board Charges 1991-92 to 2000-01

	91/92	92/93	93/94	94/95	95/96	96/97	97/98	98/99	99/00	00/01
<b>IN-STATE</b>										
Tuition & Fees	\$1,598	\$1,742	\$1,830	\$1,878	\$1,932	\$1,940	\$1,940	\$1,982	\$1,586	\$1,586
Comp. Fee	1,700	1,834	1,968	2,022	2,082	2,164	2,208	2,274	2,340	2,414
Total Commuter	3,298	3,576	3,798	3,900	4,014	4,104	4,148	4,256	3,926	4,000
Room & Board*	4,102	4,284	4,400	4,544	4,680	4,884	4,994	5,264	5,392	5,504
Total On- Campus	7,400	7,860	8,198	8,444	8,694	8,988	9,142	9,520	9,318	9,504
<b>OUT-OF- STATE</b>										
Tuition & Fees	4,950	5,406	5,682	5,972	6,212	6,416	6,608	6,982	7,192	7,436
Comp. Fee	1,700	1,834	1,968	2,022	2,082	2,164	2,208	2,274	2,340	2,414
Total Commuter	6,650	7,240	7,650	7,994	8,294	8,580	8,816	9,256	9,532	9,850
Room & Board*	4,102	4,284	4,400	4,544	4,680	4,884	4,994	5,264	5,392	5,504
Total On- Campus	10,752	11,524	12,050	12,538	12,974	13,464	13,810	14,520	14,924	15,354

Source: JMU Budget Office

\*Based on 19 meal plan

### JMU Tuition and Fee History 1991-92 to 2000-01

