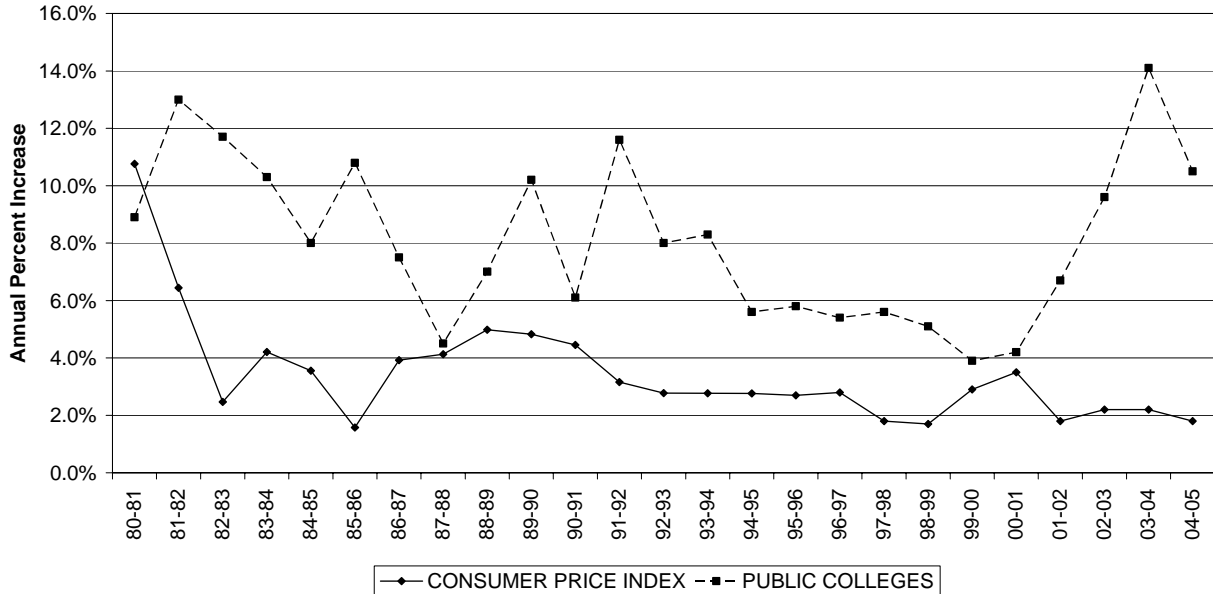


## 2.0 TUITION AND FEES

### 2.1 National Trends

**Changes in College Tuition  
Compared With Consumer Price Index**



Concerns over the rising costs of attending colleges and universities have heightened in the past few years and are influencing state policies regarding tuition and fees. Since 1981-82 the average cost of attending colleges and universities has increased faster than the rate of inflation as measured by the Consumer Price Index (CPI). As indicated by the chart above, this trend has strengthened markedly since 2000-01 as states have reduced general fund appropriations for public higher education in response to declining tax revenues and colleges and universities have increased tuition to compensate.

Factors involved in rising costs for higher education include:

- Reduction in state general fund support,
- Faculty salaries rising faster than general inflation,
- Relative decline in federal student grant programs,
- High cost of institutionally funded financial aid,
- Migration of students from low to high cost disciplines,
- Administrative support and governmentally imposed requirements have risen,
- The need to keep pace with new technologies,
- Federal funding for research has not kept up with institutional expenditures for research,
- Program expansion, and
- New construction or renovation.

Expanding enrollments in the 1960s and 70s permitted colleges and universities to spread fixed costs and increase total expenditures (15 percent per year from 1970 to 1975) while holding per student expenditure increases to 4.0 percent annually. In the decade of the 1980s, the rate of increase in tuition did not come down as fast as the CPI because — at least in part — students were paying a larger share of the costs of their education. In the public sector, more than half of the added tuition revenue from 1982 to 2004 represents increases in the share of educational costs borne by students to compensate for decreases in state general fund support.

Virginia's tuition and fees are higher than corresponding national and regional charges. The Commonwealth's position as a high tuition state is reflected in national comparisons that rank Virginia 12<sup>th</sup> highest among the fifty states. This is an improvement from previous years when Virginia was ranked as high as 2<sup>nd</sup>. The lower ranking reflects the tuition freeze initiated by Governor Allen in 1996 and funded by the 1996 through 2001 General Assemblies.

The 1998 Acts of Assembly established the Joint Subcommittee on Higher Education Funding Policies to develop funding guidelines. The Joint Subcommittee adopted higher education funding guidelines for Virginia public institutions in December 2000. The funding guidelines for operation and maintenance of plant were developed and added to the higher education funding guidelines in 2001.

In addition, the Joint Subcommittee on Higher Education Funding Policies adopted a fund share policy of 67/33 between general fund support and tuition revenue for base funding estimates derived by the funding guidelines in 2003.

The following pages contain two tables (pages 4 and 5) and two graphics (pages 6 and 7) comparing Virginia's and JMU's positions on tuition and fees relative to national data from forty-six states. The two tables on pages 4 and 5 compare the rate of increase in undergraduate tuition and required fees, by state, for state colleges and universities for in-state (page 4) and out-of-state (page 5) students. Virginia's four-year rate of increase in 2003-04 was the 25<sup>th</sup> highest out of 46 states for in-state students and 33<sup>rd</sup> highest for out-of-state students. In 1990-00 Virginia's four-year ranking was 46<sup>th</sup> out of 46 for in-state students and 46<sup>th</sup> for out-of-state students. In other words, tuition and fee increases in Virginia moderated substantially between 1995-96 and 1999-00, but has increased since then. The graphic on page 6 compares in-state undergraduate tuition and required fees for selected states. Virginia ranked 9<sup>th</sup> highest among the fifty states and \$329 above the national average. In 1995-96 Virginia was ranked 2<sup>nd</sup>. However, it remains to be seen how JMU's rankings will change after the massive budget cuts and rapidly increasing tuition rates that have occurred recently.

The graphic on page 7 compares JMU's tuition and fees to those of our SCHEV peer group. JMU ranks 15<sup>th</sup> highest out of 25 peer institutions. JMU's 2004-05 tuition and required fees are \$5,476. This figure is below our peer group average of \$8,579. However, when JMU's figure is compared with the 19 other publicly funded peer institutions, it ranks 11<sup>th</sup> highest, an improvement from 14<sup>th</sup> one year ago. The public average for 2004-05, including JMU, is \$5,204.

Virginia's one-year rate of change for in-state tuition and required fees for 2003-04 was 13.7 percent. This was 2.1 percent higher than the national average of 11.6 percent. For out-of-state students, Virginia's average was 8.9 percent – 0.6 percent below the national average of 9.5 percent.

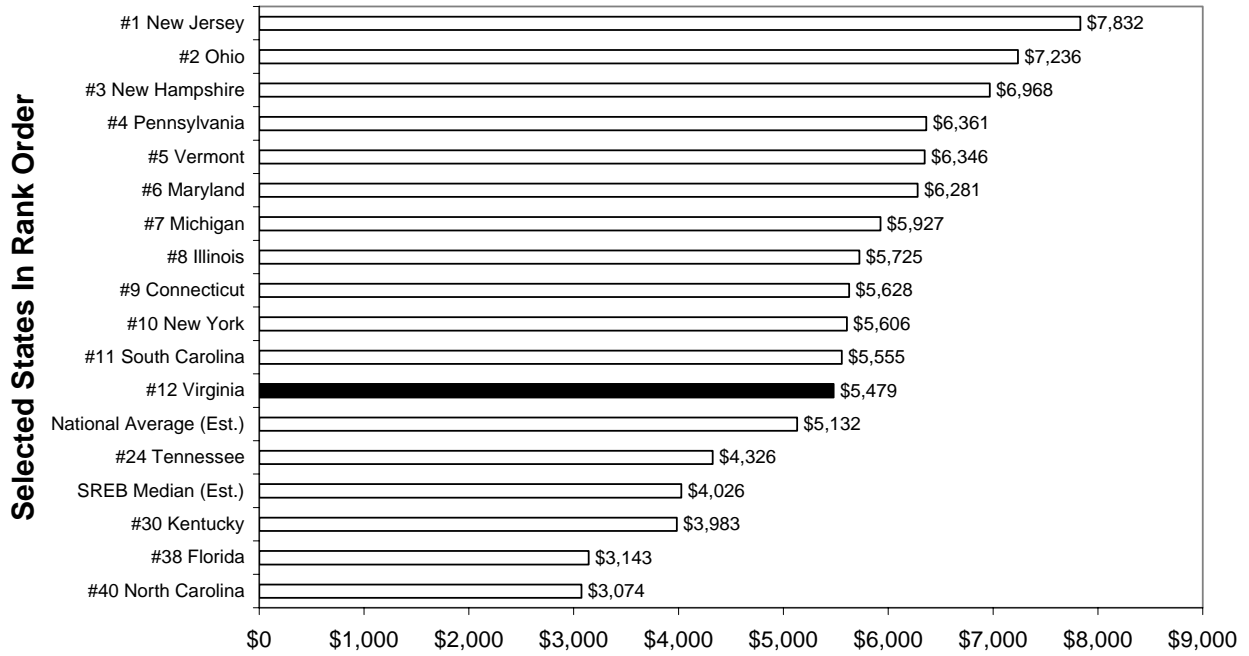
**RESIDENT UNDERGRADUATE TUITION AND REQUIRED FEES  
(STATE AVERAGES) COLLEGES AND STATE UNIVERSITIES**

	1999-00	2000-01	2001-02	2002-03	2003-04	Percentage Increase	
						One Year	Four Year
Alabama	2,761	2,916	3,261	3,488	3,913	12.2%	41.7%
Arizona	2,259	2,344	2,486	2,583	3,593	39.1%	59.1%
Arkansas	2,801	2,974	3,477	3,725	4,130	10.9%	47.4%
California	1,847	1,859	1,897	2,072	2,649	27.8%	43.4%
Colorado	2,302	2,353	2,511	2,704	2,765	2.3%	20.1%
Connecticut	3,747	3,908	4,172	4,556	5,149	13.0%	37.4%
Florida	2,233	2,348	2,551	2,698	2,876	6.6%	28.8%
Georgia	2,239	2,361	2,480	2,605	2,848	9.3%	27.2%
Idaho	2,340	2,514	2,732	3,060	3,350	9.5%	43.1%
Illinois	3,844	4,001	4,215	4,606	5,238	13.7%	36.3%
Indiana	3,556	3,697	3,947	4,468	4,936	10.5%	38.8%
Iowa	2,988	3,130	3,440	4,118	4,916	19.4%	64.5%
Kansas	2,216	2,354	2,424	2,593	2,946	13.6%	33.0%
Kentucky	2,533	2,699	2,897	3,205	3,644	13.7%	43.8%
Louisiana	2,224	2,473	2,492	2,587	2,983	15.3%	34.1%
Maine	3,393	3,510	3,690	3,860	4,183	8.4%	23.3%
Maryland	4,426	4,650	4,759	5,225	5,747	10.0%	29.8%
Massachusetts	3,206	3,260	3,295	4,075	4,988	22.4%	55.6%
Michigan	3,800	4,027	4,501	4,943	5,423	9.7%	42.7%
Minnesota	3,076	3,238	3,561	3,970	4,517	13.8%	46.8%
Mississippi	2,689	2,789	3,207	3,531	3,531	0.0%	31.3%
Missouri	3,019	3,202	3,436	4,127	4,562	10.6%	51.1%
Montana	2,823	2,924	3,222	3,707	3,827	3.2%	35.5%
Nebraska	2,500	2,693	2,916	3,199	3,659	14.4%	46.4%
Nevada	2,145	2,220	2,295	2,370	2,550	7.6%	18.9%
New Hampshire	5,034	5,309	5,557	5,995	6,375	6.3%	26.6%
New Jersey	5,002	5,328	5,762	6,533	7,166	9.7%	43.3%
New Mexico	1,762	1,933	2,042	2,222	2,471	11.2%	40.2%
New York	3,963	4,006	4,068	4,153	5,129	23.5%	29.4%
North Carolina	1,862	2,025	2,255	2,677	2,812	5.0%	51.0%
North Dakota	2,709	2,790	2,909	3,191	3,594	12.6%	32.7%
Ohio	4,396	4,674	5,058	5,920	6,620	11.8%	50.6%
Oklahoma	1,944	1,996	2,171	2,377	2,762	16.2%	42.0%
Oregon	3,362	3,435	3,650	4,223	4,493	6.4%	33.7%
Pennsylvania	4,476	4,695	4,969	5,532	5,820	5.2%	30.0%
Rhode Island	3,260	3,371	3,521	3,761	3,995	6.2%	22.5%
South Carolina	3,350	3,350	3,790	4,340	5,082	17.1%	51.7%
South Dakota	3,258	3,485	3,702	3,987	4,322	8.4%	32.6%
Tennessee	2,622	2,852	3,246	3,491	3,958	13.4%	51.0%
Texas	2,468	2,651	2,724	3,259	3,763	15.5%	52.5%
Utah	2,042	2,106	2,252	2,426	2,632	8.5%	28.9%
Vermont	4,780	4,944	5,132	5,374	5,806	8.0%	21.5%
Virginia	3,658	3,730	3,841	4,417	5,023	13.7%	37.3%
Washington	2,796	2,890	3,071	3,471	3,700	6.6%	32.3%
West Virginia	2,393	2,494	2,593	2,870	3,162	10.2%	32.2%
Wisconsin	3,027	3,058	3,272	3,526	4,180	18.6%	38.1%
<b>National Average</b>	<b>3.7%</b>	<b>4.6%</b>	<b>6.8%</b>	<b>10.5%</b>	<b>11.6%</b>	<b>11.6%</b>	<b>37.8%</b>
<b>Virginia Ranking</b>	<b>11</b>	<b>11</b>	<b>12</b>	<b>11</b>	<b>12</b>	<b>14</b>	<b>25</b>

## NONRESIDENT UNDERGRADUATE TUITION AND REQUIRED FEES (STATE AVERAGES) COLLEGES AND STATE UNIVERSITIES

	1999-00	2000-01	2001-02	2002-03	2003-04	Percentage Increase	
						One Year	Four Year
Alabama	5,337	5,628	6,252	6,694	7,500	12.0%	40.5%
Arizona	8,893	9,288	10,352	11,103	12,113	9.1%	36.2%
Arkansas	5,663	6,026	7,019	7,535	8,176	8.5%	44.4%
California	9,965	9,241	9,279	10,532	11,109	5.5%	11.5%
Colorado	8,074	8,406	8,851	9,501	10,290	8.3%	27.5%
Connecticut	9,287	9,661	10,145	10,758	12,134	12.8%	30.7%
Florida	9,222	9,686	10,439	11,971	13,781	15.1%	49.4%
Georgia	7,663	7,989	8,501	8,860	9,781	10.4%	27.6%
Idaho	8,400	8,634	8,952	9,380	10,010	6.7%	19.2%
Illinois	8,284	8,580	8,425	9,158	10,159	10.9%	22.6%
Indiana	9,200	9,594	10,186	11,438	12,379	8.2%	34.6%
Iowa	7,748	8,094	8,762	10,426	11,874	13.9%	53.3%
Kansas	7,179	7,549	7,759	8,253	9,206	11.5%	28.2%
Kentucky	6,842	7,255	7,739	8,419	9,290	10.3%	35.8%
Louisiana	7,148	7,858	7,893	8,017	8,403	4.8%	17.6%
Maine	7,883	8,120	8,490	8,980	9,763	8.7%	23.8%
Maryland	9,600	10,175	10,567	11,511	12,701	10.3%	32.3%
Massachusetts	9,545	9,805	10,433	11,480	12,636	10.1%	32.4%
Michigan	8,732	9,149	10,243	11,164	12,205	9.3%	39.8%
Minnesota	6,406	6,574	7,180	6,781	7,939	17.1%	23.9%
Mississippi	5,631	6,510	7,487	8,152	8,152	0.0%	44.8%
Missouri	5,674	6,002	6,451	7,732	8,552	10.6%	50.7%
Montana	7,726	8,056	9,049	10,319	11,116	7.7%	43.9%
Nebraska	4,364	4,654	5,140	5,760	6,595	14.5%	51.1%
Nevada	8,492	9,200	9,510	10,155	11,037	8.7%	30.0%
New Hampshire	10,344	10,619	11,057	11,655	12,425	6.6%	20.1%
New Jersey	8,061	8,530	9,239	10,447	11,430	9.4%	41.8%
New Mexico	6,440	7,078	7,706	8,438	9,023	6.9%	40.1%
New York	8,863	8,906	8,968	9,115	11,079	21.6%	25.0%
North Carolina	9,021	9,244	10,121	11,534	12,112	5.0%	34.3%
North Dakota	5,952	6,167	6,435	6,944	7,983	15.0%	34.1%
Ohio	9,960	10,471	11,161	12,685	13,759	8.5%	38.2%
Oklahoma	4,599	4,651	5,064	5,530	6,662	20.5%	44.8%
Oregon	9,090	9,567	10,020	10,843	11,304	4.3%	24.4%
Pennsylvania	9,244	9,698	10,305	11,356	12,058	6.2%	30.4%
Rhode Island	8,185	8,471	8,911	9,525	10,195	7.0%	24.6%
South Carolina	6,610	6,610	7,410	8,530	10,029	17.6%	51.7%
South Dakota	7,077	7,438	7,785	8,236	9,033	9.7%	27.6%
Tennessee	7,810	8,524	9,768	10,502	11,834	12.7%	51.5%
Texas	9,076	8,835	8,980	9,734	10,799	10.9%	19.0%
Utah	6,058	6,283	6,718	7,292	7,958	9.1%	31.4%
Vermont	10,276	10,632	11,048	11,586	12,360	6.7%	20.3%
Virginia	10,289	10,572	10,970	11,995	13,068	8.9%	27.0%
West Virginia	5,791	5,993	6,338	7,016	7,767	10.7%	34.1%
Wisconsin	9,891	10,586	12,040	13,572	14,226	4.8%	43.8%
Washington	9,761	9,989	10,651	11,626	12,168	4.7%	24.7%
<b>National Average</b>	<b>3.9%</b>	<b>4.2%</b>	<b>6.6%</b>	<b>9.0%</b>	<b>9.5%</b>	<b>9.5%</b>	<b>32.5%</b>
<b>Virginia Ranking</b>	<b>2</b>	<b>4</b>	<b>5</b>	<b>3</b>	<b>4</b>	<b>26</b>	<b>33</b>

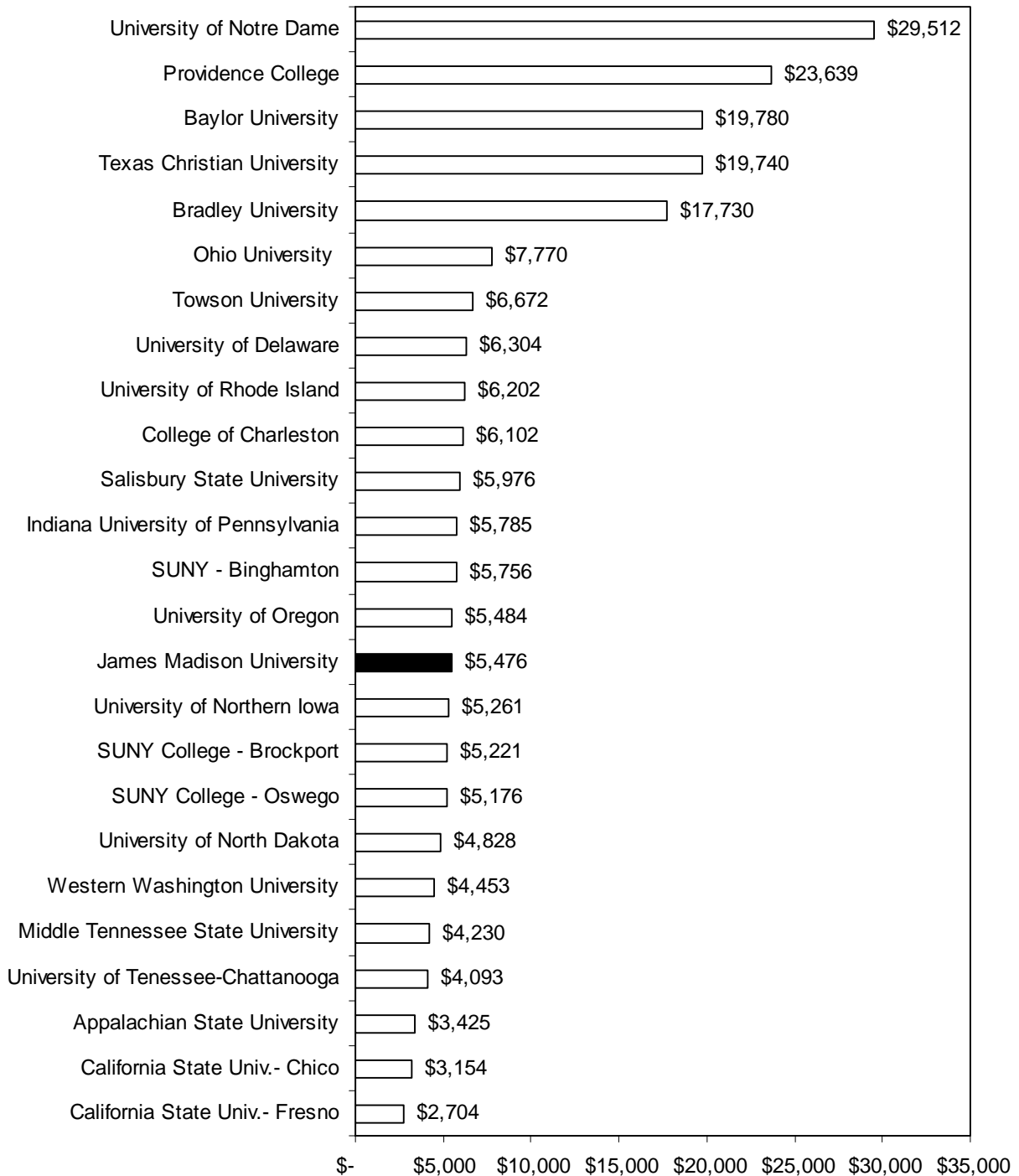
## 2004-05 Estimated In-State Tuition & Fees Public Comprehensives



**Source: SCHEV**

Note: SREB and National tuition and fees were estimated to increase by 10.5 percent during 2004-05.

## 2004-05 SCHEV Peer Group: In-State Tuition and Required Fees



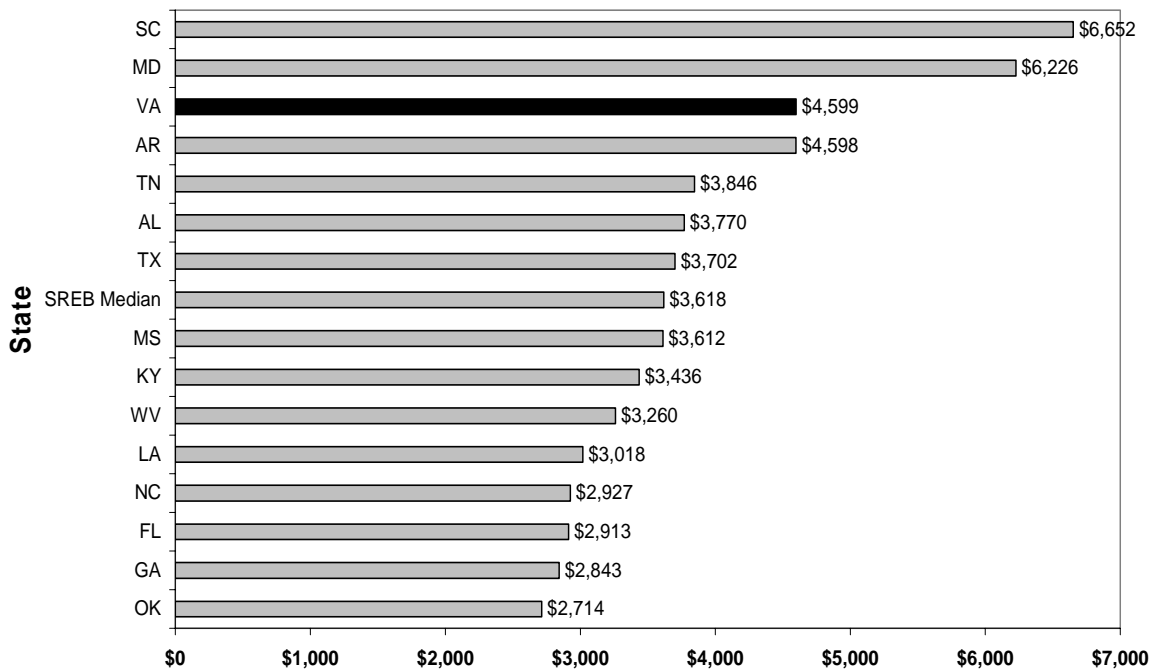
## 2.2 Regional Trends

Virginia is part of the Southern Regional Education Board (SREB) – the nation's first interstate compact for education. SREB was created in 1948 at the request of southern governors and acts as a clearinghouse for information on trends and issues that affect education in the south.

Colleges and universities are classified according to SREB definitions based on institutional size and degree programs. Undergraduate tuition and fees charged students in each state's universities and colleges are compared with specific groups based on SREB definitions. For example, James Madison University is considered to be a Four-Year 3 institution. A Four-Year 3 institution awards at least 100 doctoral, masters, education specialist, or post-master's certificates and degrees distributed among at least 10 broad program areas. JMU and Radford are the Four-Year 3 institutions in the Virginia system of higher education. Data for 2004-05 will be available in December 2005 and will appear in next year's report.

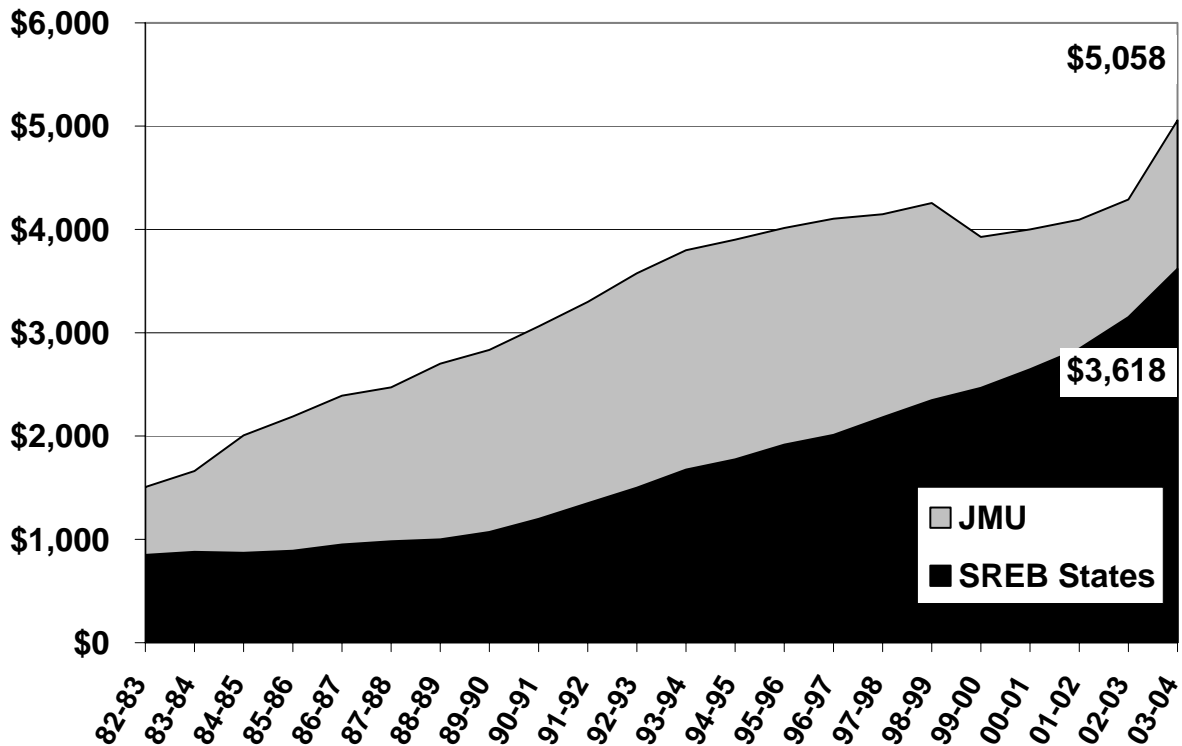
As the graphic below demonstrates, Virginia has the third highest tuition and fees for in-state undergraduates at regional Four-Year 3 institutions. This is up from fourth in 2002-03. Virginia's increase (14 percent) was slightly below the median (15 percent) for all the states.

**2003-04 In-State Undergraduate Tuition and Fees  
Four-Year 3 Institutions**



Source: Southern Regional Education Board

## In-State Tuition and Fees JMU & SREB States, 1982-83 to 2003-04



Source: SREB

"Tuition and fees" refers to the annual tuition and mandatory fees charged all full-time undergraduate students. Mandatory fees do not include special fees assessed in particular programs; for example music, science laboratories, or nursing. Nor are other fees unique to given situations included; for example late registration fees or automobile registration fees. Mandatory fees do include health service fees, building use fees, student activity fees, and athletic fees where the fee is not optional for full-time students.

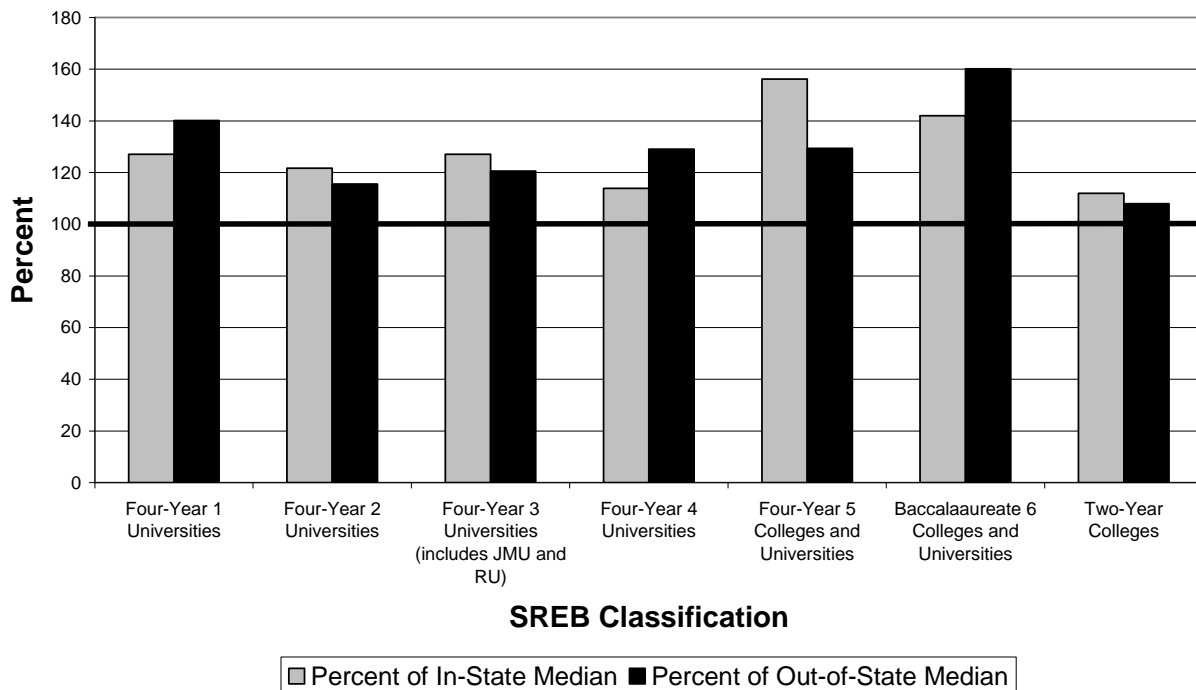
Tuition and fees for in-state undergraduate students at JMU increased less than the SREB median for Four-Year 3 institutions over the past ten years. Since 1982-83, in-state undergraduate student charges at JMU rose 186 percent while median charges in the region went up 271 percent. JMU's tuition and fees are now 140 percent (less than the 151 percent in 2000-01, but down from 255 percent in 1990-91) of the SREB regional median for Four-Year 3 institutions. In 2003-04, JMU's in-state tuition and required fees were \$1,440 above the regional median for comparable institutions. The tuition and fee data for 2004-05 are likely to reverse the pattern of the previous ten years as the Virginia institutions were allowed to raise tuition and fees for 2003-04 and 2004-05 to recover some of the revenues lost from the state.

The following two charts illustrate Virginia's percentage ranking for in-state and out-of-state tuition and fees as compared to the Southern Regional Education Board (SREB) institutional median.

**Virginia Highlights**  
**Percent of SREB Median Tuition and Fees by Residence**  
**2003-04**

SREB Classification	Percent of In-State Median	Percent of Out-of-State Median
Four-Year 1 Universities	127	140
Four-Year 2 Universities	122	116
<b>Four-Year 3 Universities (includes JMU and RU)</b>	127	121
Four-Year 4 Universities	114	129
Four-Year 5 Colleges and Universities	156	129
Baccalaureate 6 Colleges and Universities	142	160
Two-Year Colleges	112	108

**Percent Of SREB Median Tuition And Fees By Residence, 2003-04**



## 2.3 State Trends

Among the state's fifteen four-year colleges and universities, JMU's in-state tuition ranks 13<sup>th</sup> highest, required fees ranks 3<sup>rd</sup>, and room and board ranks 5<sup>th</sup>. Total in-state tuition, required fees, and room and board ranks 7<sup>th</sup> and JMU's out-of-state total cost ranks 7<sup>th</sup> as well.

### In-State and Out-of-State Undergraduate Tuition, Required Fees And Room and Board for Virginia's State-Supported Institutions Of Higher Education, 2004-05

Rank	IS Tuition		OS Tuition		Required Fees		Room and Board		Total IS		Total OS	
	Inst	Amount	Inst	Amount	Inst	Amount	Inst	Amount	Inst	Amount	Inst	Amount
1	UVA	\$5,243	UVA	\$21,343	VMI	\$3,968	CNU	\$7,200	VMI	\$13,528	UVA	\$28,660
2	VPI	\$4,826	CWM	\$19,191	LU	\$3,041	VCU	\$6,920	CWM	\$13,162	CWM	\$27,968
3	CWM	\$4,385	VMI	\$17,548	<b>JMU</b>	<b>\$2,724</b>	VSU	\$6,260	UVA	\$12,560	VMI	\$26,990
4	VMI	\$4,086	VCU	\$15,985	CWM	\$2,711	NSU	\$6,236	CNU	\$12,514	VCU	\$24,222
5	GMU	\$3,984	VPI	\$15,569	VSU	\$2,394	<b>JMU</b>	<b>\$6,116</b>	VCU	\$12,058	GMU	\$21,857
6	VCU	\$3,821	GMU	\$14,352	CNU	\$2,128	CWM	\$6,066	LU	\$11,836	VPI	\$20,869
7	UMW	\$3,671	ODU	\$12,692	NSU	\$2,075	GMU	\$6,041	<b>JMU</b>	<b>\$11,592</b>	<b>JMU</b>	<b>\$20,536</b>
8	LU	\$3,400	UVA W	\$12,260	ODU	\$1,996	UVA	\$5,960	GMU	\$11,489	NSU	\$20,491
9	ODU	\$3,272	NSU	\$12,180	UVA W	\$1,942	RU	\$5,886	ODU	\$10,974	ODU	\$20,394
10	CNU	\$3,186	UMW	\$12,077	RU	\$1,788	UMW	\$5,744	UMW	\$10,871	CNU	\$19,876
11	RU	\$2,974	<b>JMU</b>	<b>\$11,696</b>	GMU	\$1,464	ODU	\$5,706	VSU	\$10,804	UVAW	\$19,810
12	UVAW	\$2,840	CNU	\$10,548	UMW	\$1,456	UVAW	\$5,608	RU	\$10,648	UMW	\$19,277
13	<b>JMU</b>	<b>\$2,752</b>	RU	\$9,972	UVA	\$1,357	VMI	\$5,474	NSU	\$10,531	LU	\$18,346
14	NSU	\$2,220	LU	\$9,910	VCU	\$1,317	LU	\$5,395	UVAW	\$10,390	VSU	\$17,722
15	VSU	\$2,150	VSU	\$9,068	VPI	\$1,012	VPI	\$4,288	VPI	\$10,126	RU	\$17,646

Source: SCHEV Report on 2004-05 Tuition and Fees, June 30, 2004.

#### NOTES:

1. All required fees listed are for general undergraduate students, living both on- and off-campus and, therefore, exclude any special fees for specific curriculums or special charges associated with dormitory living, such as room and board.
2. Room and board charges are weighted averages for double occupancy rooms.
3. Old Dominion University charges a per credit hour rate to all undergraduate and graduate students. The full-time charges for undergraduate tuition and required fees are based on 30 regular session credit hours, 15 hours per semester.
4. At Virginia Military Institute, all students are required to live on post; therefore, room, board and laundry fees are also required fees.

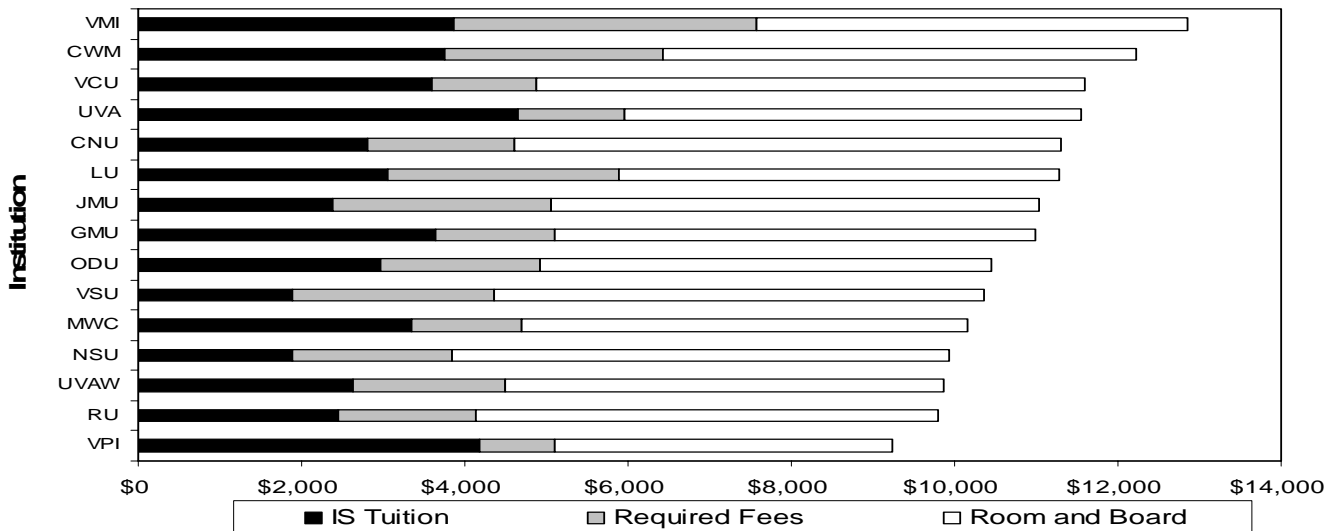
## 2004-05 Full-Time In-State Undergraduate Student Charges

Institution	Tuition and Mandatory Fees	Percent Change From 03-04	Room and Board	Percent Change From 03-04	Total	Percent Change From 03-04
GMU	\$5,448	6.60%	\$6,041	2.70%	\$11,489	4.50%
ODU	\$5,268	6.90%	\$5,706	3.50%	\$10,974	5.10%
UVA	\$6,600	10.70%	\$5,960	6.60%	\$12,560	8.70%
VCU	\$5,138	5.50%	\$6,920	2.90%	\$12,058	4.00%
VPI	\$5,838	14.60%	\$4,288	3.40%	\$10,126	9.60%
CWM	\$7,096	10.40%	\$6,066	4.70%	\$13,162	7.70%
CNU	\$5,314	15.50%	\$7,200	7.50%	\$12,512	10.70%
UVA-Wise	\$4,782	6.40%	\$5,608	4.50%	\$10,390	5.40%
JMU	\$5,476	8.30%	\$6,116	2.50%	\$11,592	5.20%
LU	\$6,441	9.60%	\$5,395	-0.20%	\$11,836	4.90%
UMW	\$5,127	9.40%	\$5,744	4.90%	\$10,871	6.90%
NSU	\$4,295	11.80%	\$6,236	2.30%	\$10,531	6.00%
RU	\$4,762	15.00%	\$5,886	4.00%	\$10,648	8.70%
VMI	\$8,054	6.20%	\$5,474	3.90%	\$13,528	5.30%
VSU	\$4,554	4.50%	\$6,260	4.20%	\$10,804	4.30%
VCCS	\$2,006	6.50%	N/A	N/A	\$2,200	5.80%
Doct. Avg.	\$5,898	9.12%	\$5,830	3.97%	\$11,728	6.60%
Comp. Avg.	\$5,423	9.63%	\$5,991	3.73%	\$11,412	6.38%
Avg.-All *	\$5,613	9.43%	\$5,927	3.83%	\$11,539	6.47%

Source: SCHEV Report on 2004-05 Tuition and Fees, June 30, 2004. \* Excludes VCCS

Annual increases in Virginia for in-state tuition and required fees from 2003-04 to 2004-05 for the senior institutions ranged from 4.5 percent at Virginia State University to 15.5 percent at Christopher Newport University. Annual increases in Virginia for the senior institutions for in-state tuition, required fees, and room and board ranged from 4.0 percent at Virginia Commonwealth University to 10.7 percent at Christopher Newport University.

### VA Public In-State Charges, 2004-05 Combined Tuition/Fees, Room/Board



## 2004-05 Full-Time Out-of-State Undergraduate Student Charges

Institutions	Tuition & Mandatory Fees 04-05	Percent Change From 03-04	Room & Board 04-05	Percent Change From 03-04	Total Out-of-State 04-05	Percent Change From 03-04
GMU	\$15,816	5.78%	\$6,041	2.72%	\$21,857	4.90%
ODU	\$14,688	4.33%	\$5,706	3.50%	\$20,394	4.10%
UVA	\$22,700	3.26%	\$5,960	6.60%	\$28,660	3.90%
VCU	\$17,302	0.52%	\$6,920	2.93%	\$24,222	1.20%
VT	\$16,581	10.33%	\$4,288	3.42%	\$20,869	8.80%
W&M	\$21,902	3.23%	\$6,066	4.69%	\$27,968	3.50%
CNU	\$12,676	3.06%	\$7,200	7.46%	\$19,876	4.60%
UVA-Wise	\$14,202	6.12%	\$5,608	4.53%	\$19,810	5.70%
JMU	\$14,420	8.58%	\$6,116	2.51%	\$20,536	6.70%
LU	\$12,951	9.26%	\$5,395	-0.24%	\$18,346	6.30%
UMW	\$13,533	8.82%	\$5,744	4.86%	\$19,277	7.60%
NSU	\$14,255	7.50%	\$6,236	2.26%	\$20,491	5.90%
RU	\$11,760	4.98%	\$5,886	3.99%	\$17,646	4.60%
VMI	\$21,516	6.01%	\$5,474	3.95%	\$26,990	5.60%
VSU	\$11,462	1.79%	\$6,260	4.19%	\$17,722	2.60%
VCCS	\$6,429	1.95%	N/A	N/A	\$6,429	2.00%
Doct. Avg.	\$18,165	4.57%	\$5,830	3.98%	\$23,995	4.40%
Comp. Avg.	\$14,086	6.24%	\$5,991	3.72%	\$20,077	5.51%
Avg. All*	\$15,718	5.57%	\$5,927	3.83%	\$21,644	5.07%

**Source: SCHEV Report on 2004-05 Tuition and Fees, June 30, 2004.**

**\*Excludes VCCS**

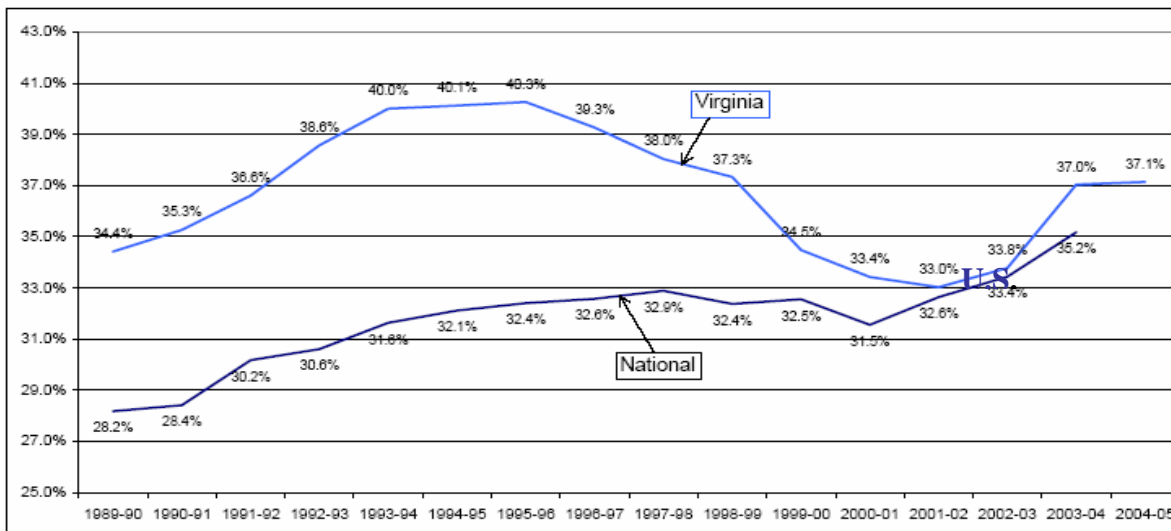
Annual percent changes in Virginia for out-of-state tuition and required fees from 2003-04 to 2004-05 for the senior institutions ranged from 0.5 percent at Virginia Commonwealth University to 10.3 percent at Virginia Tech. Annual increases in Virginia for out-of-state tuition, required fees, and room and board for the senior institutions ranged from 1.2 percent for Old Dominion University to 8.8 percent at Virginia Commonwealth University.

The following contains analyses from SCHEV that illustrates the ability of the average Virginian to afford higher education at one of the Commonwealth's public colleges or universities.

According to SCHEV's annual tuition and fee report,

“Compared to other states, Virginia’s median in-state undergraduate charges as a percentage of per capita disposable income have exceeded the national average over the last decade. In 1990, Virginia’s per capita disposable income was about 6% higher than the national average. In contrast, the median total undergraduate charge (including room and board) for in-state undergraduate students was nearly 30% higher than the national norm. Nationally, total charges represented 28.2% of per capita disposable income, while the rate was 34.4% in Virginia. However, the Commonwealth’s policy to restrain and reduce in-state undergraduate tuition between 1994 and 2002 reduced the gap between the state and national averages. By 2001-02, the relationship between student charges and income had changed substantially in Virginia. The median charges for in-state undergraduates represented about the same percentage of income in Virginia (33.0%) as they did nationally (32.6%). However, the gap widened once again in 2003-04. The median charges for in-state undergraduates represented 37.0% of income in Virginia compared to the national average of 35.2% as shown in Chart 7A. It should be noted, however, that the 37% cost share to a Virginia family is still less than the 40% share paid ten years ago. National data for 2004-05 will not be available until late 2004, so the impact of the recent tuition and fee increases in Virginia relative to the nation is yet to be evaluated.”

**Average Public 4-Year Total Undergraduate Charges  
As a Percent of Per Capita Disposable Income**



Note: Cost includes tuition and mandatory fees, and room and board.  
 The 2003-04 national average is estimated based on the annual increase rate in the prior year.  
 Source: College Board, US Bureau of Economic Analysis, and SCHEV.

The graphic above from SCHEV demonstrates that a higher education at a Virginia public institution became considerably more affordable between the mid 1990s and 2002-03. The upward trend in the last two years is – however – disturbing and very similar to when the state was coming out of the recession of the early 1990s. Currently it is uncertain what the trend will be in the next few years.

## 2.4 Tuition and Fee History

### JMU Tuition, Fee, and Room and Board Charges 1995-96 to 2004-05

	95/96	96/97	97/98	98/99	99/00	00/01	01/02	02/03	03/04	04/05
<b>IN-STATE</b>										
Tuition & Fees	\$1,932	\$1,940	\$1,940	\$1,982	\$1,586	\$1,586	\$1,586	\$1,728	\$2,420	\$2,752
Comp. Fee	\$2,082	\$2,164	\$2,208	\$2,274	\$2,340	\$2,414	\$2,508	\$2,560	\$2,638	\$2,724
Total Commuter	\$4,014	\$4,104	\$4,148	\$4,256	\$3,926	\$4,000	\$4,094	\$4,288	\$5,058	\$5,476
Room & Board <sup>2</sup>	\$4,680	\$4,884	\$4,994	\$5,264	\$5,392	\$5,504	\$5,678	\$5,794	\$5,966	\$6,116
Total On-Campus	\$8,694	\$8,988	\$9,142	\$9,520	\$9,318	\$9,504	\$9,772	\$10,082	\$11,024	\$11,592
<b>OUT-OF-STATE</b>										
Tuition & Fees	\$6,212	\$6,416	\$6,608	\$6,982	\$7,192	\$7,436	\$8,098	\$8,912	\$10,642	\$11,696
Comp. Fee	\$2,082	\$2,164	\$2,208	\$2,274	\$2,340	\$2,414	\$2,508	\$2,560	\$2,638	\$2,724
Total Commuter	\$8,294	\$8,580	\$8,816	\$9,256	\$9,532	\$9,850	\$10,606	\$11,472	\$13,280	\$14,420
Room & Board*	\$4,680	\$4,884	\$4,994	\$5,264	\$5,392	\$5,504	\$5,678	\$5,794	\$5,966	\$6,116
Total On-Campus	\$12,974	\$13,464	\$13,810	\$14,520	\$14,924	\$15,354	\$16,284	\$17,266	\$19,246	\$20,536

Source: JMU Budget Office

<sup>1</sup> Before mid-year tuition increases

<sup>2</sup> Based on 19-meal plan

### JMU Tuition and Fee History 1995-96 to 2004-05

