



Women's Development Center

Moné Parker  
Thesis



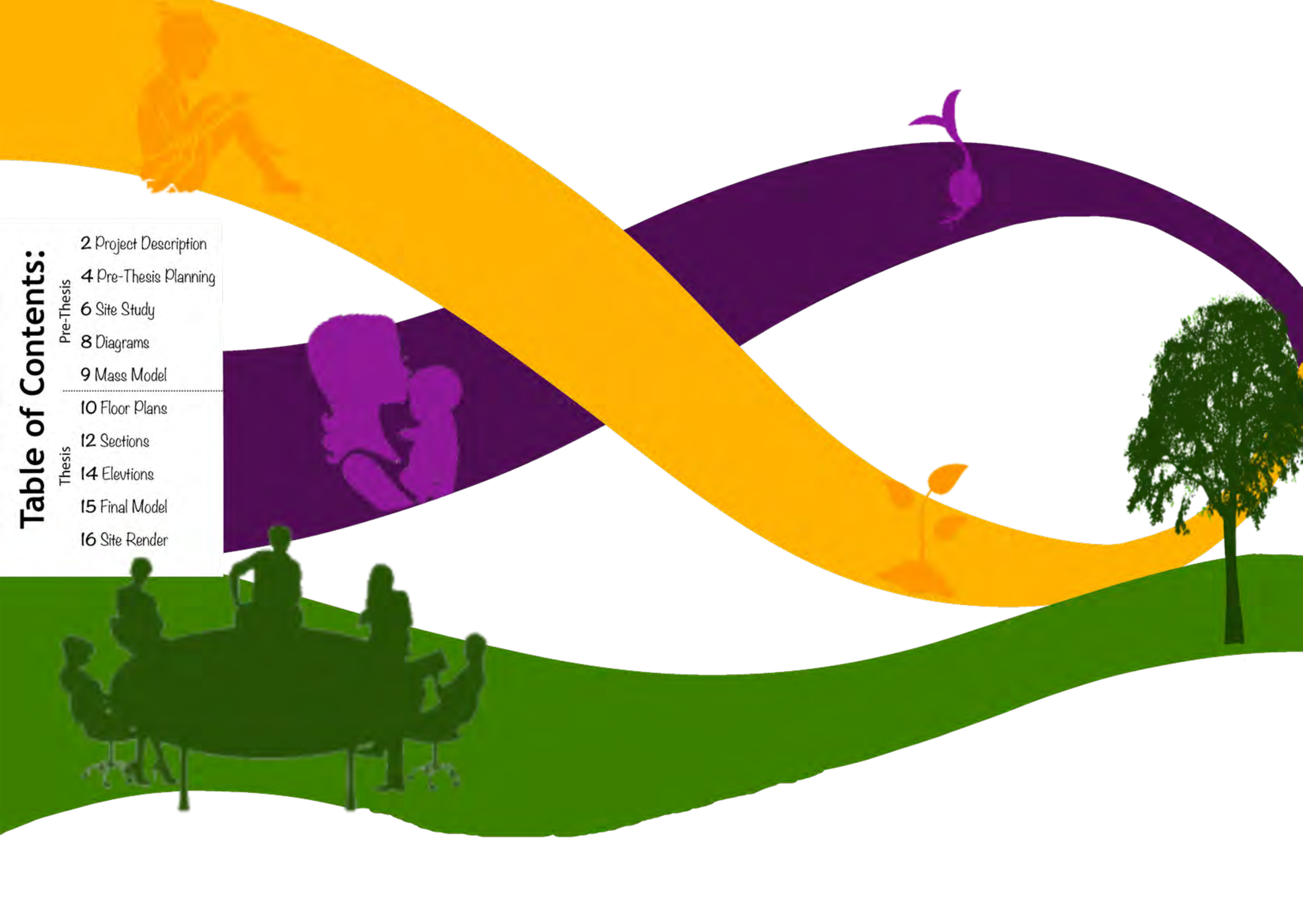
Women are underrated and underrepresented in too much of society, even though they have the same capabilities as their male counterparts. Women deserve a place that supports them and helps them reach their fullest potential. The Women's Development Center's goal is to assist women and young girls in whatever stage they're in. Working together within the community of New Orleans, this center can grow, teach, and inspire young girls and grown women to see everything they're capable of. Based in City Park, New Orleans, this center focuses on the overall growth of women therefore it includes areas that assist with learning, child and women care, and professional development. To display that, the center adopts the traditional colors of New Orleans. The traditional colors and meanings are as follows; purple-justice, gold-power, and green-faith. For the Women's Development Center it utilizes purple for women/child care, gold for learning, and green for professional development. Multiple spaces will be used for these purposes as well as additional spaces for recreation usage. A main attraction of this center is its grand courtyard that spans the majority of the building such that it blurs the lines of interior and exterior. Then, at the heart of the center, a growing oak tree which symbolizes the growth and further success that each person will gain from interacting and utilizing the sources of the Women's Development Center.





# Table of Contents:

Pre-Thesis	2 Project Description
	4 Pre-Thesis Planning
	6 Site Study
	8 Diagrams
<hr/>	
Thesis	9 Mass Model
	10 Floor Plans
	12 Sections
	14 Elevations
15 Final Model	
16 Site Render	



*historical site*  
 animals  
**Women's Center**  
 Quiet  
 Community  
 nature  
**trees**  
 LARGE  
 SPACE  
 friendly  
 children  
 mapping

These word collages assisted in the deciding factors that made City Park, New Orleans the home of the Women's Development Center. The concept of this center was always for it to be in a city park. The reasons being are for the fact that city parks usually get a lot of foot traffic, are easily accessible, are maintained by the government, and are the center of major cities.

*historical site*  
**botanical**  
**gardens**  
 animals variety  
**Tress**  
**Chance**  
**Of Floods**  
**City Park,**  
**New Orleans**  
 Museum of Art  
 & Arch  
 1300 ACRES  
 little foot  
 traffic

This City Park, New Orleans collage consist of the pros(cool colors) and cons(warm colors) of this site based off what the center can thrive from. The greatest components that made this the final site was the abundance of attractions throughout the site that can be used along with the center.





# Precedents







# City Park, New Orleans



NEW ORLEANS  
BOTANICAL GARDEN  
CITY PARK



Delgado  
COMMUNITY COLLEGE





### Notable Locations

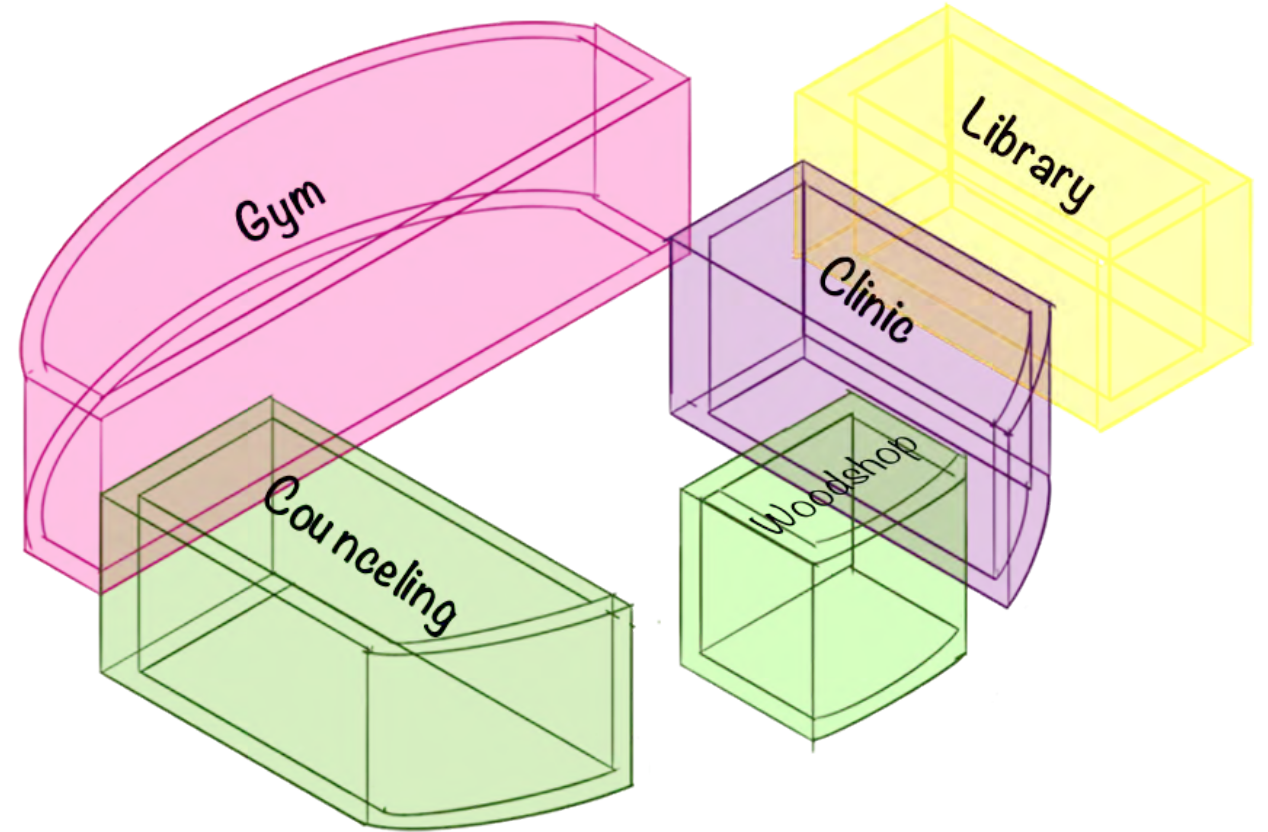
- |                              |                            |
|------------------------------|----------------------------|
| 1. New Orleans Museum of Art | 4. Grow Dat Yourself Farm  |
| 2. Botanical Gardens         | 5. Gernon Brown Rec Center |
| 3. Children's Museum         | 6. Equest Farm             |
- Other significant locations not on map*
- University of New Orleans
  - Delgado Community College

### Key

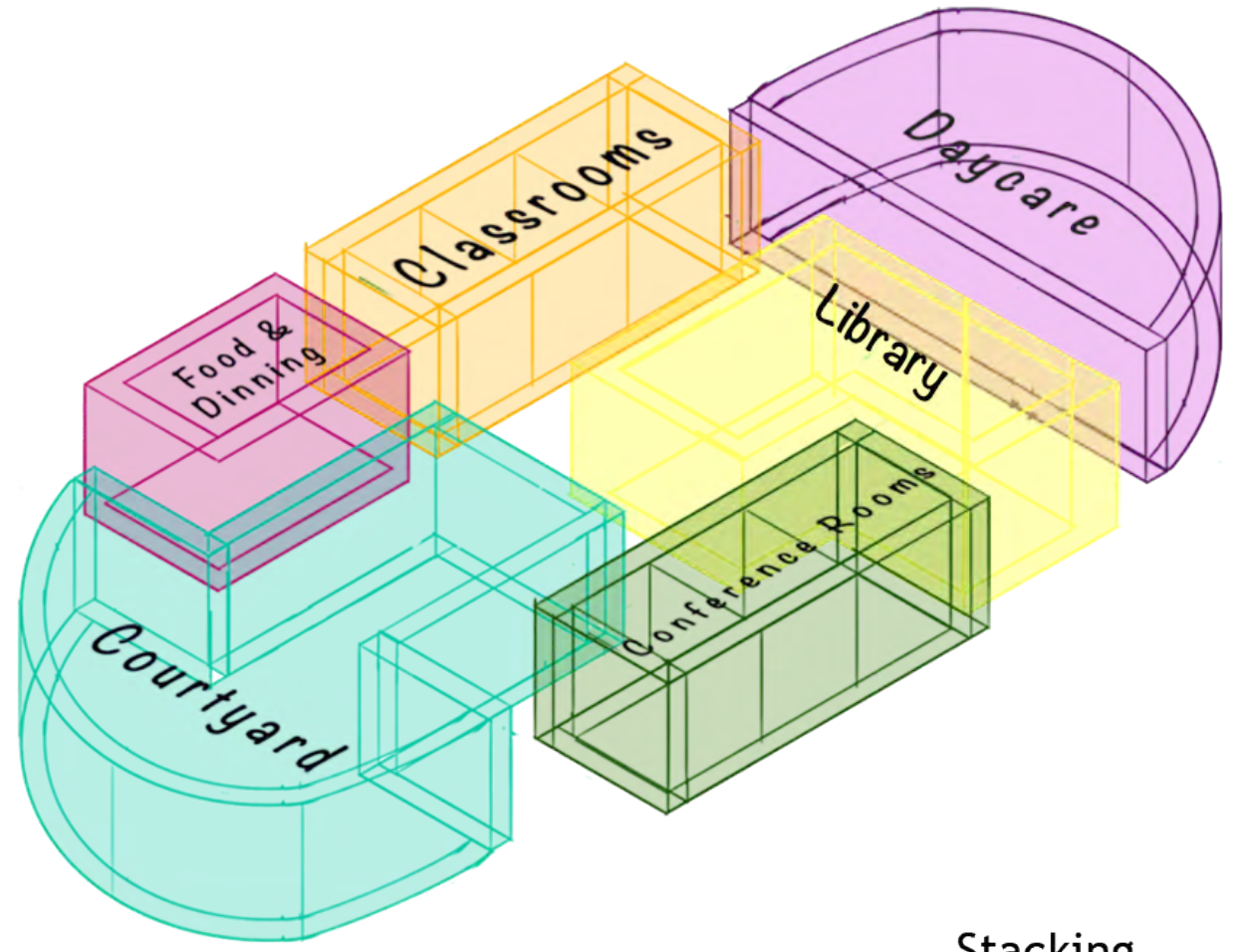
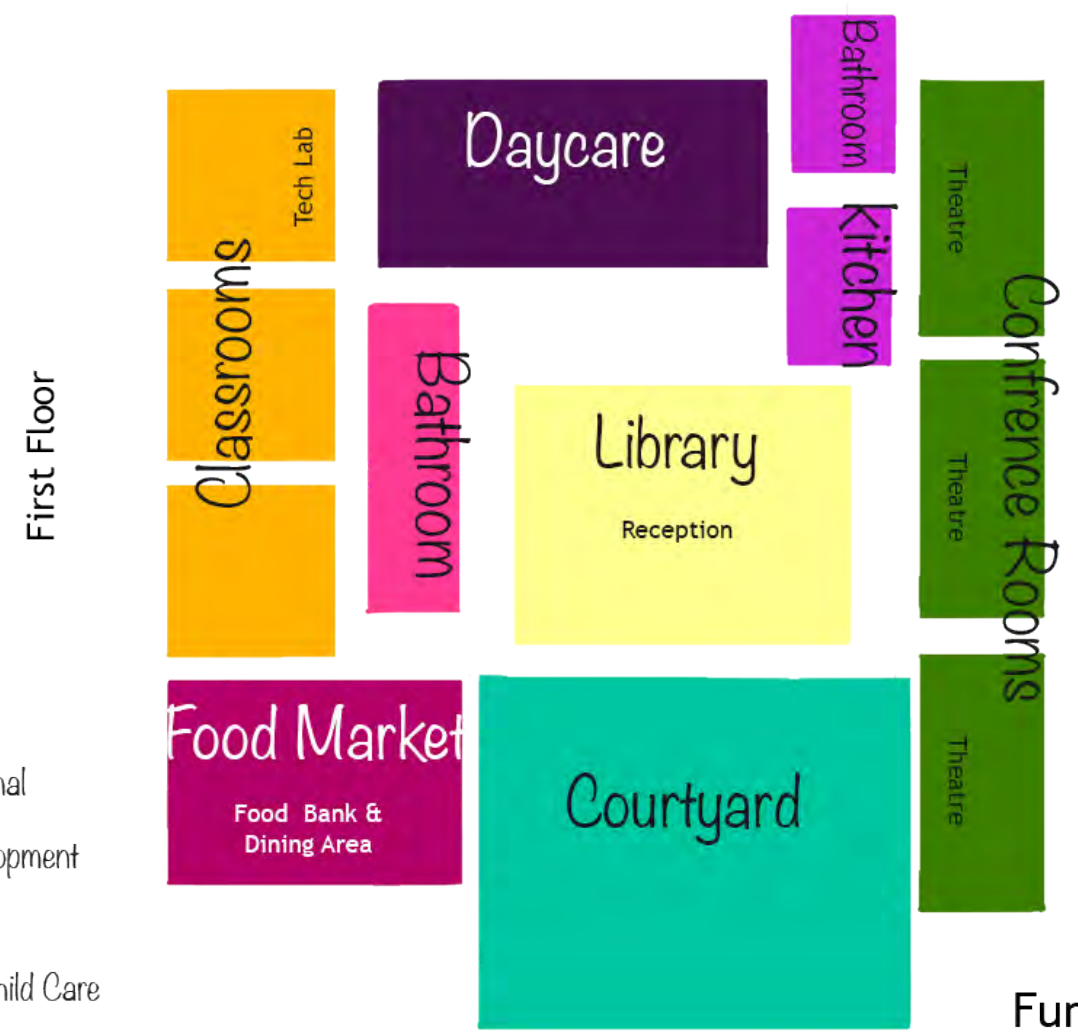
 Rivers/Lakes	 Parks & Green Space
 Roads	 Landmarks
 Paths	 Location of Site

500ft 





The function and stacking diagrams helped in understanding what types of spaces this center this needed, how some spaces can be multi-purpose, and how they interacted vertically. The final plans and types of spaces depended on the most common occupations in New Orleans to give the women the best chance of immediate employment.



- Key**
- Recreational
  - Pro Development
  - Learning
  - Women/Child Care
  - Courtyard

Function

Stacking





This mass model assisted in the final design in having a courtyard as the heart of the development center

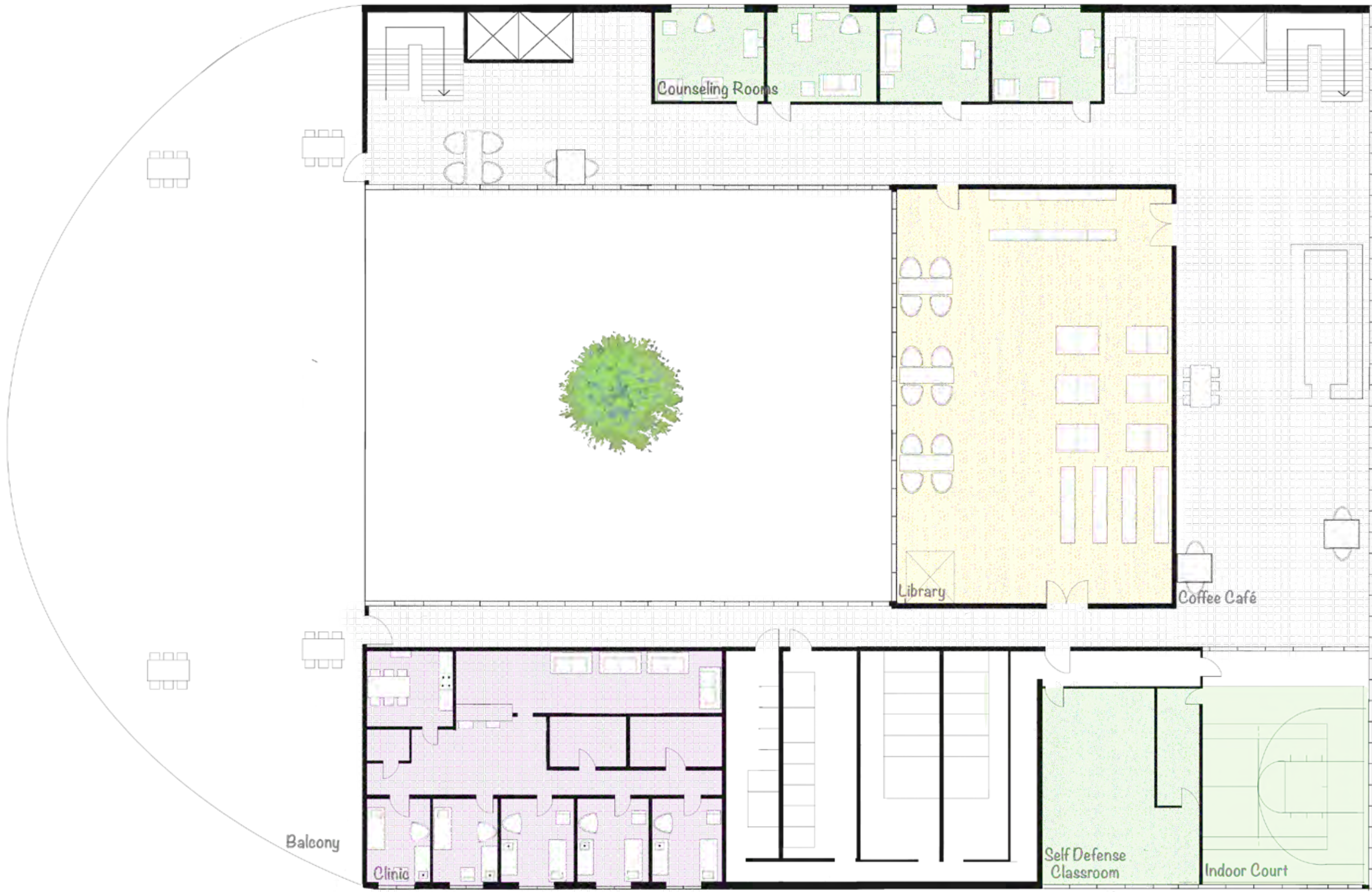


# First Floor 7



Jobs in Food Preparation and Serving related and Management are some of the most common occupations in New Orleans hence a Culinary Classroom and multiple Conference Rooms.

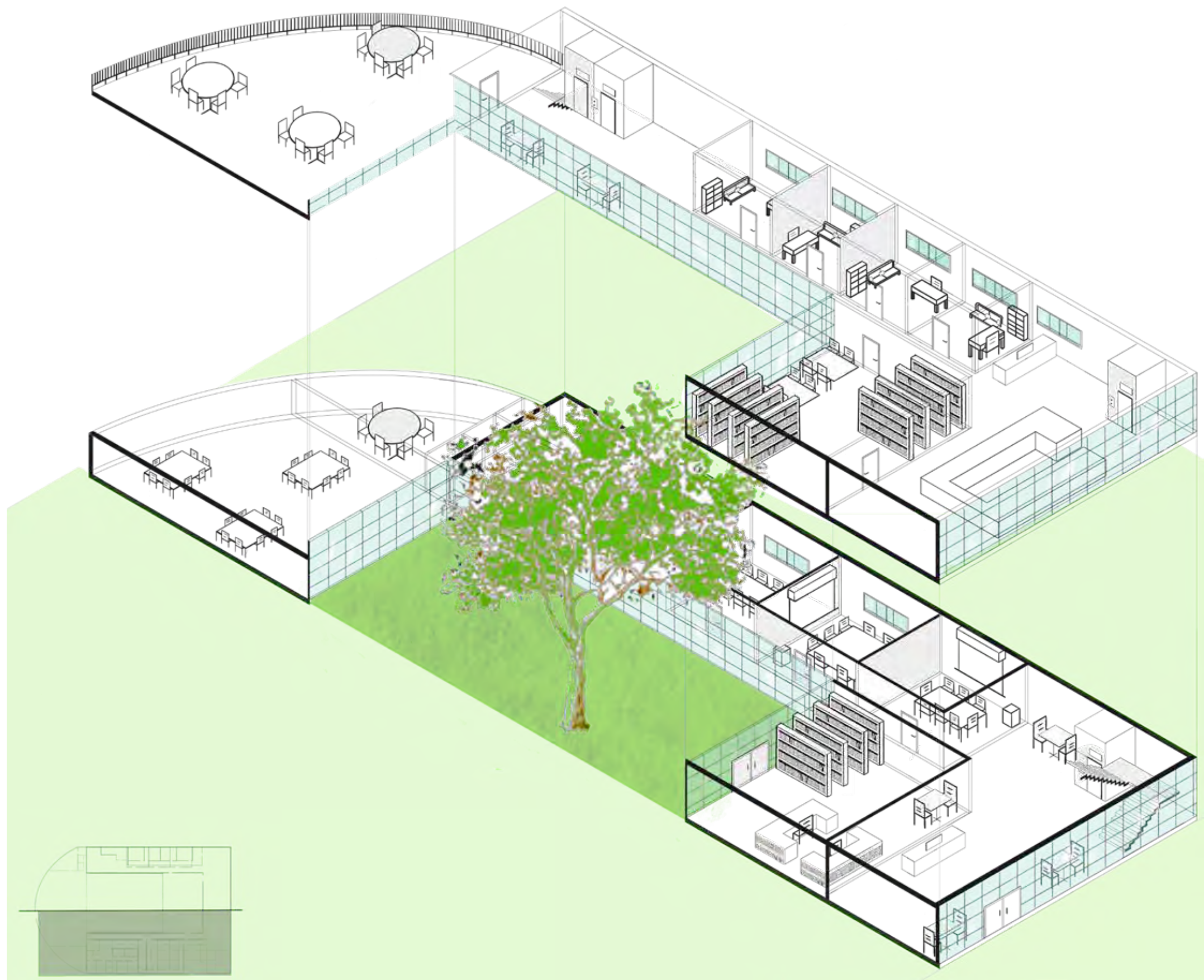




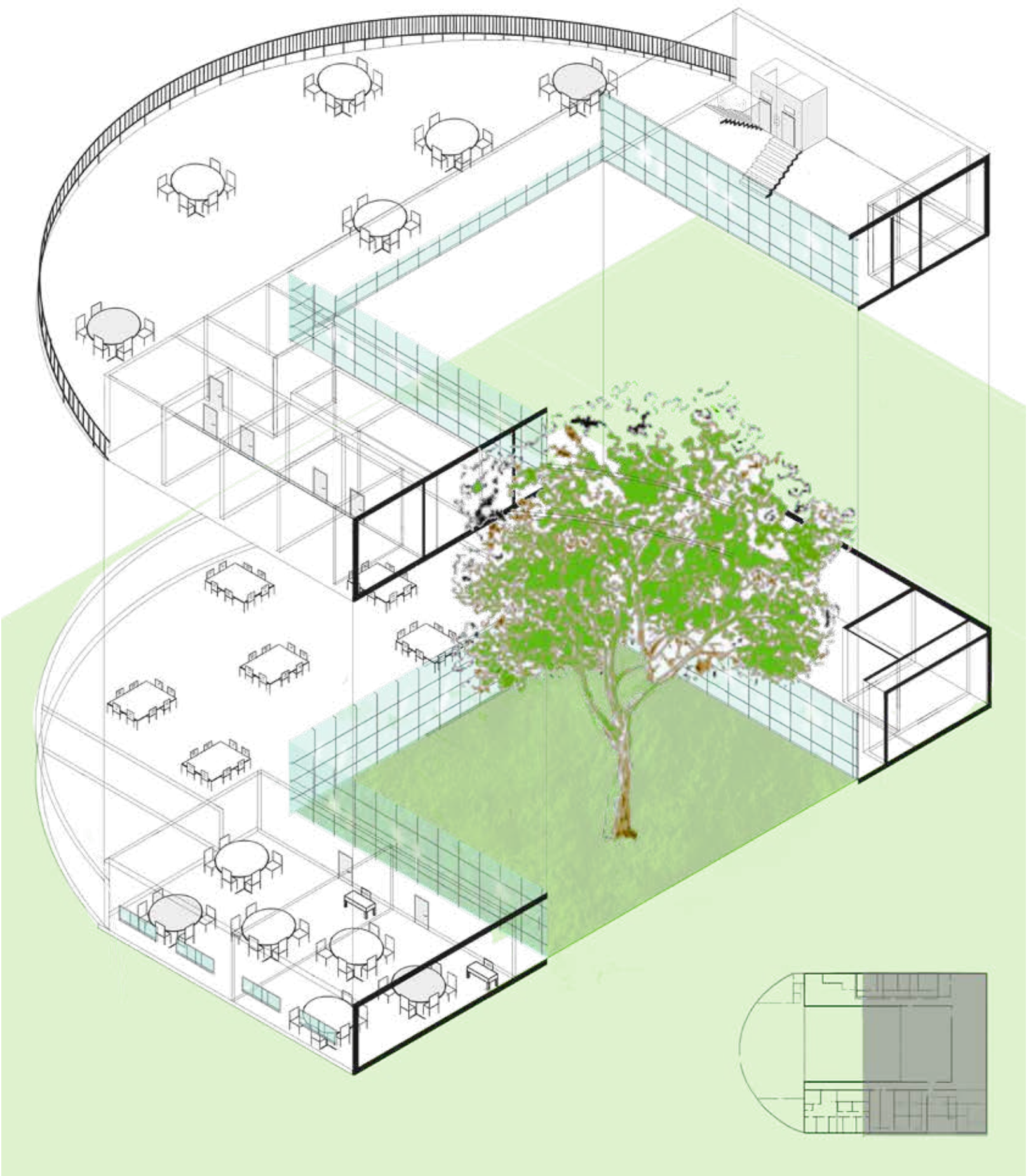
Professional Development in this center also means mental and physical help. To assist with any mental strain there are multiple Therapy room and to guide in protecting oneself the center provides free self defense classes.



Longitude Section 9

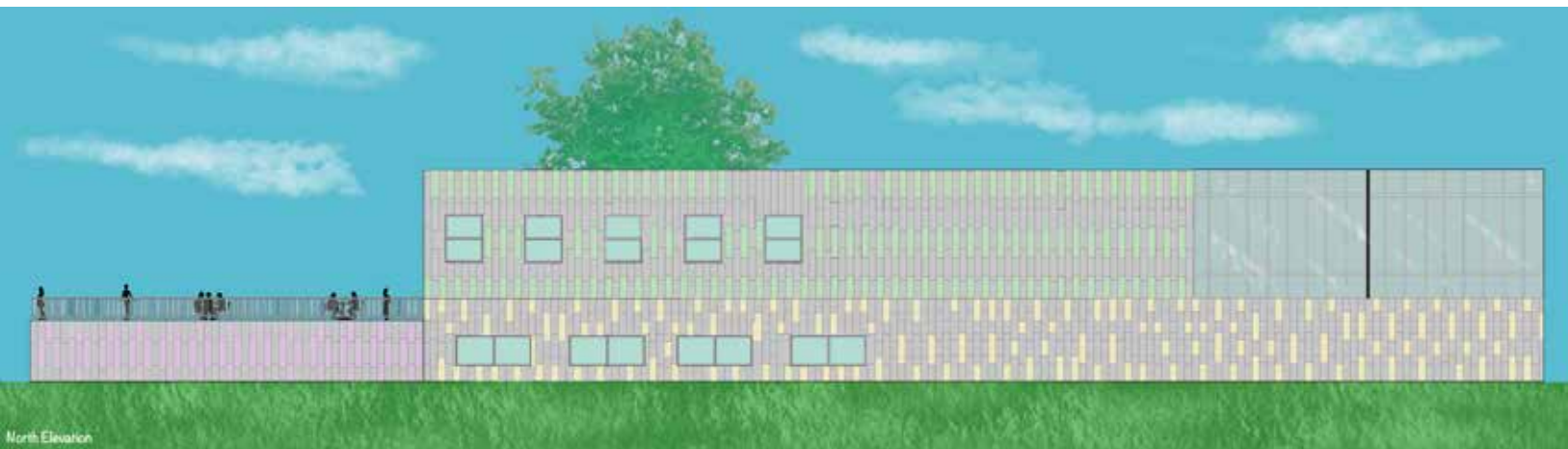
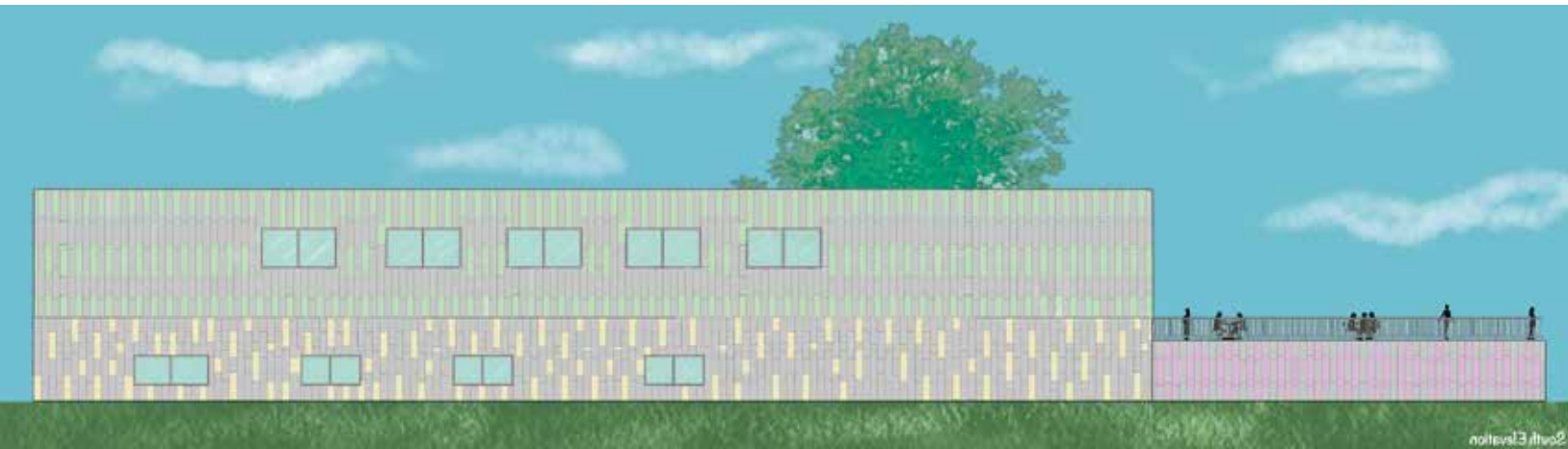
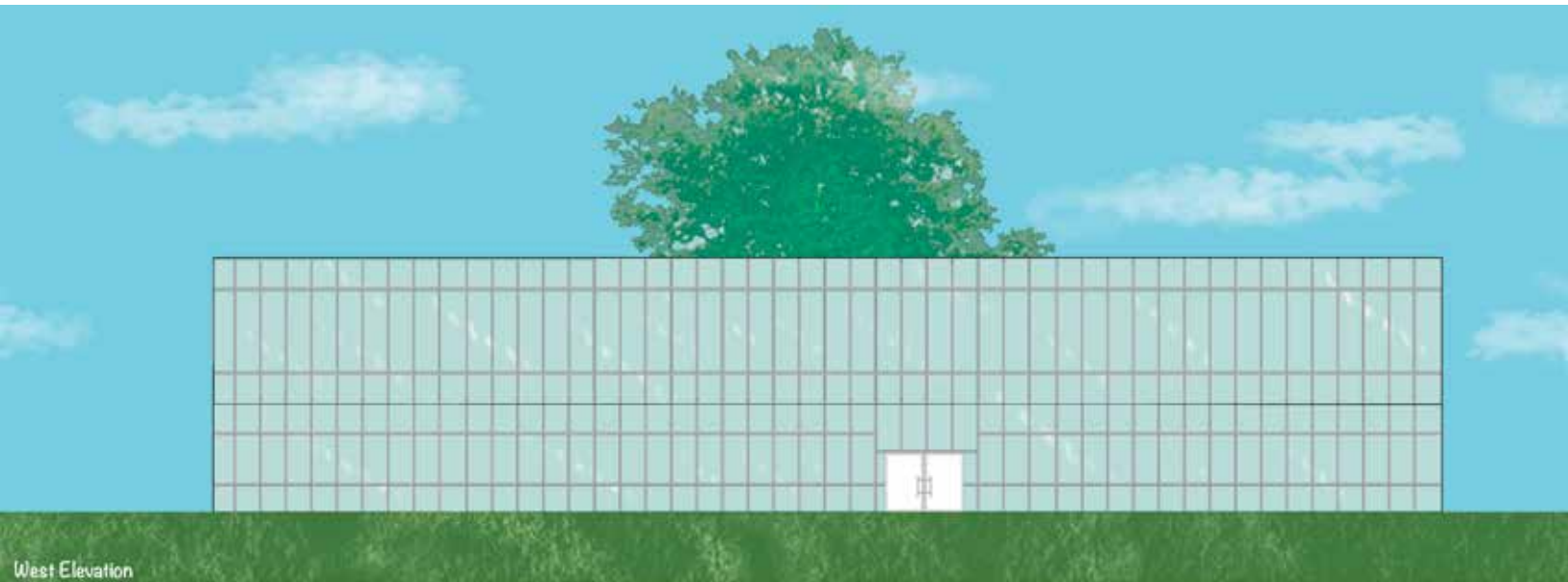








# Elevations II









Site Renders 16

