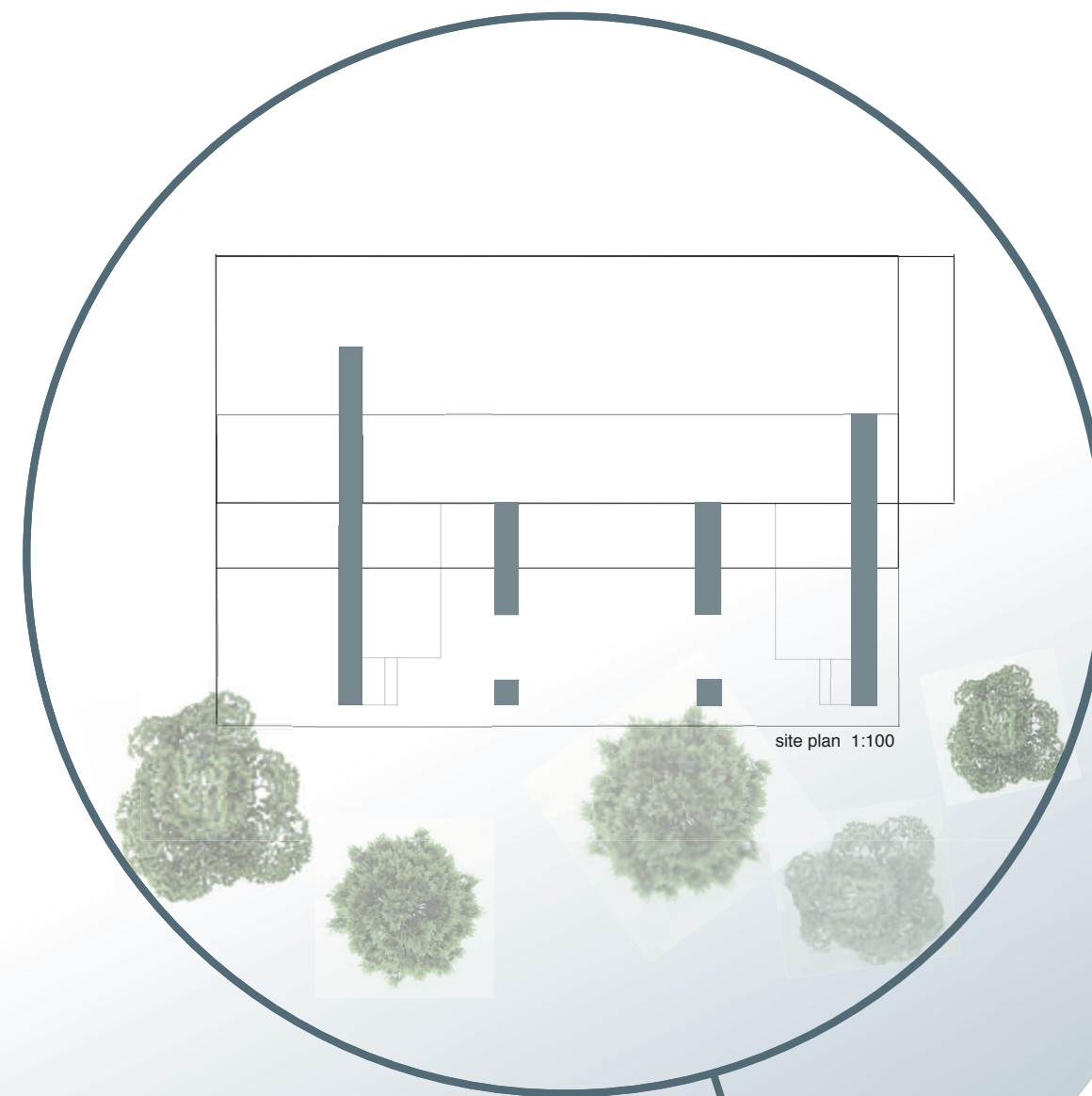


# INTRINSIC BALANCE

is designed for trekkers walking the Amber Road. With a form both powerful and memorable, and built from raw materials collected from the Latvian coastline, it offers travelers a unique space to rest. Nestled between stone and amber, with an uninterrupted view of sea, hikers will experience a refuge of balance and beauty.



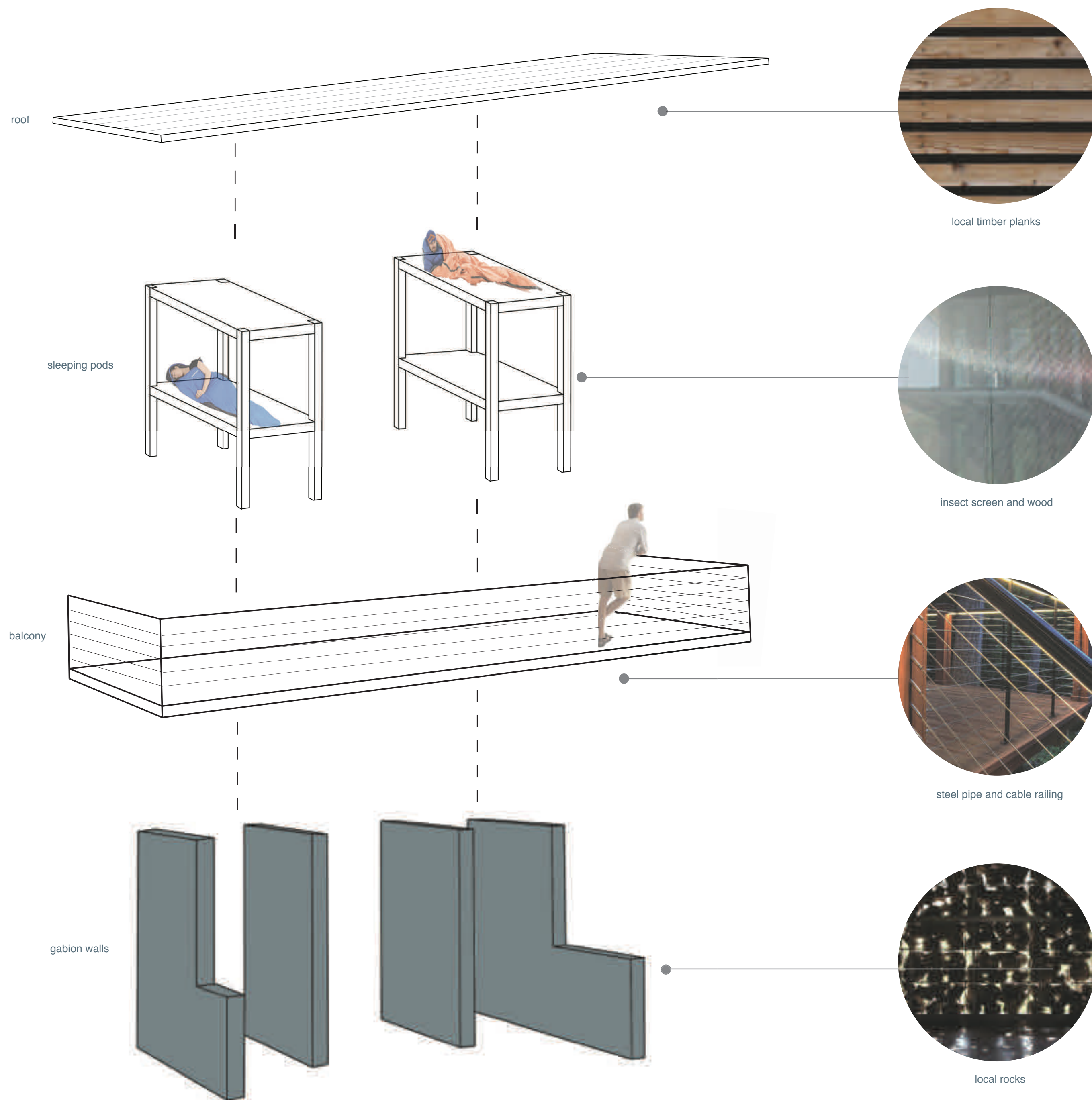


## LATVIAN COAST

Resting on the shoreline of the Latvian coast, the *Intrinsic Balance* cabins enhance the Latvian landscape with minimal disturbance to the environment, providing a unique experience for hikers on the Amber Road Trail. Placing the cabins just beyond the tree-line, on the threshold between woods and shore, presents hikers an unexpected resting spot, steps from the forest, and with views of the distant watery horizon.

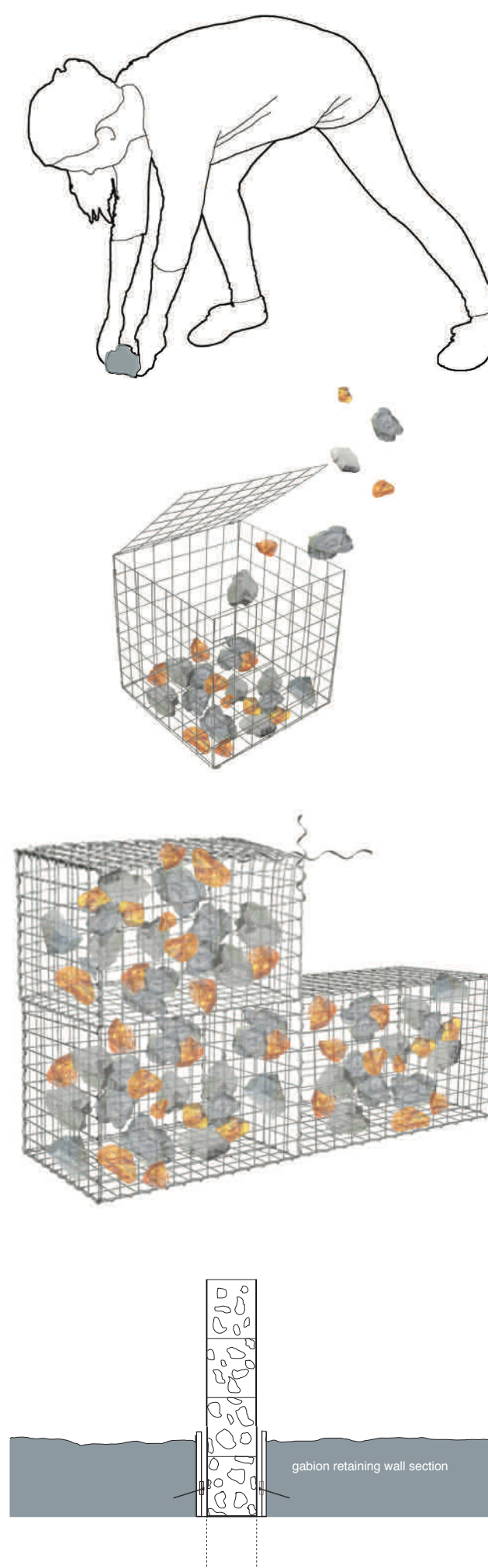






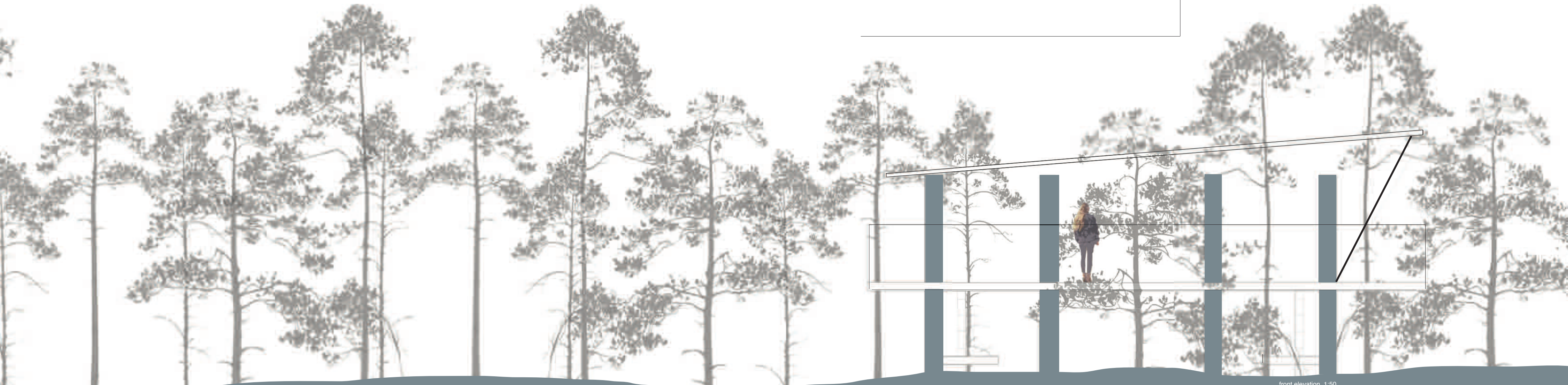
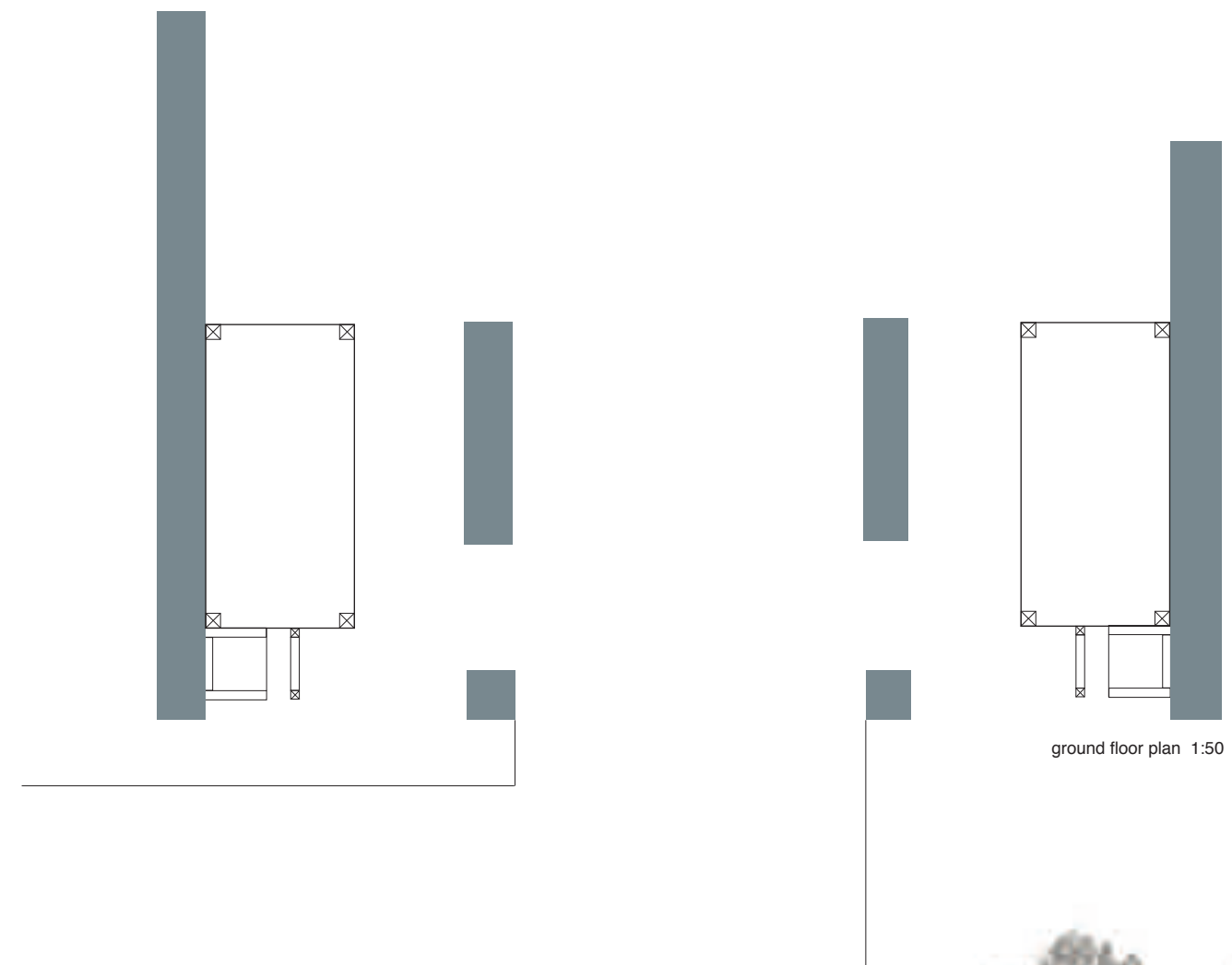
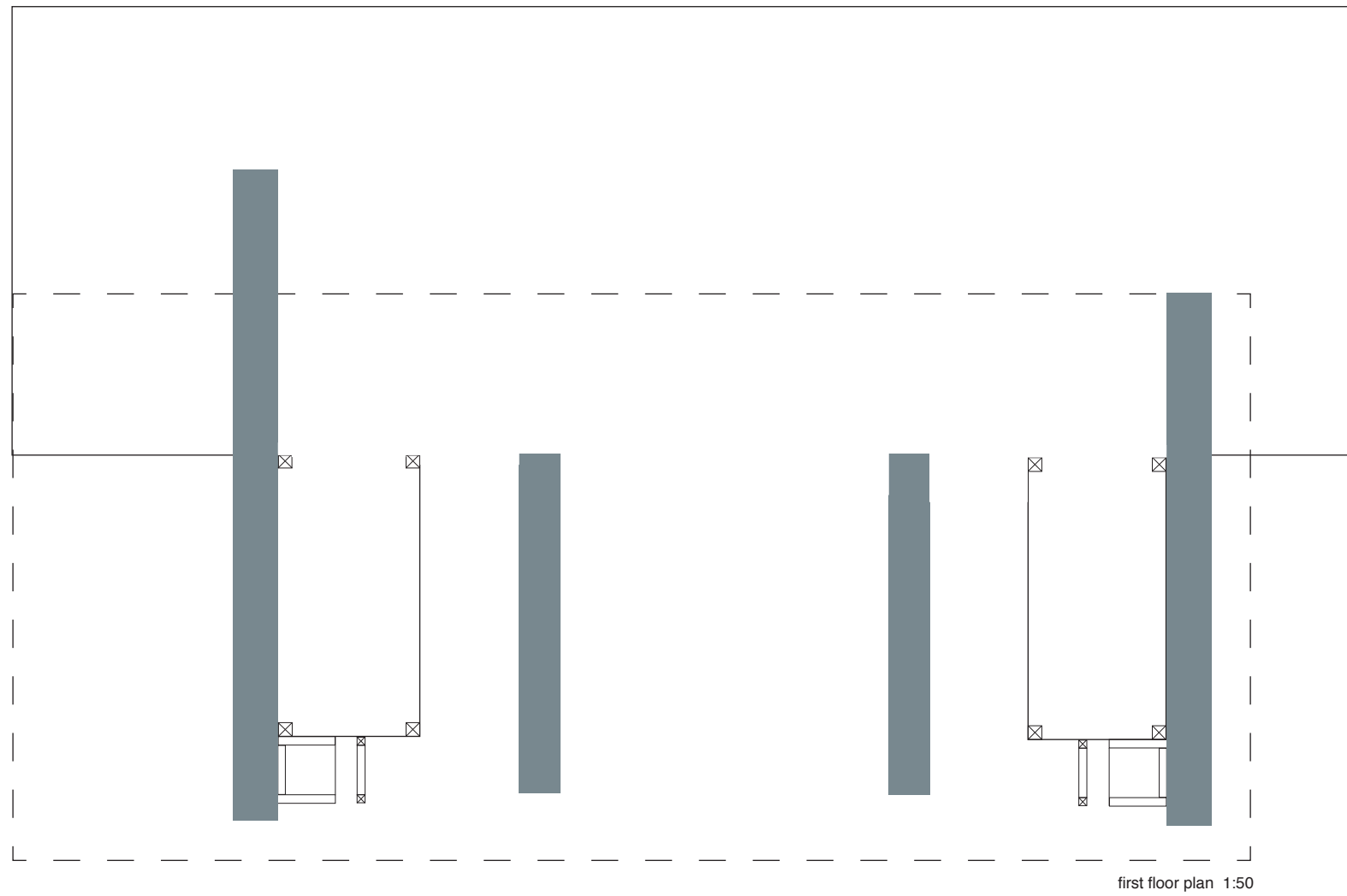
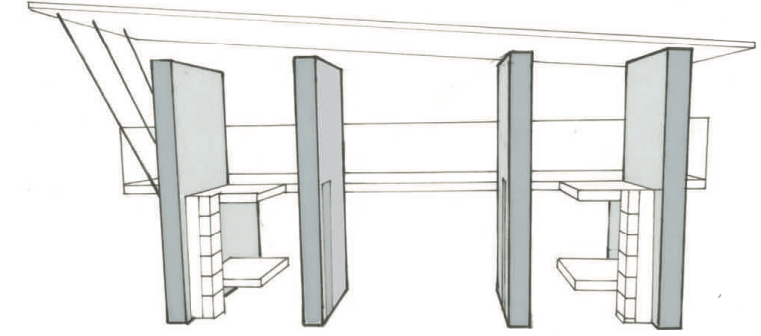
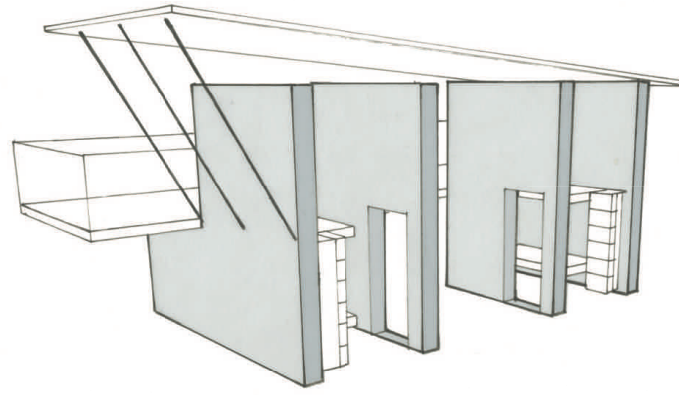
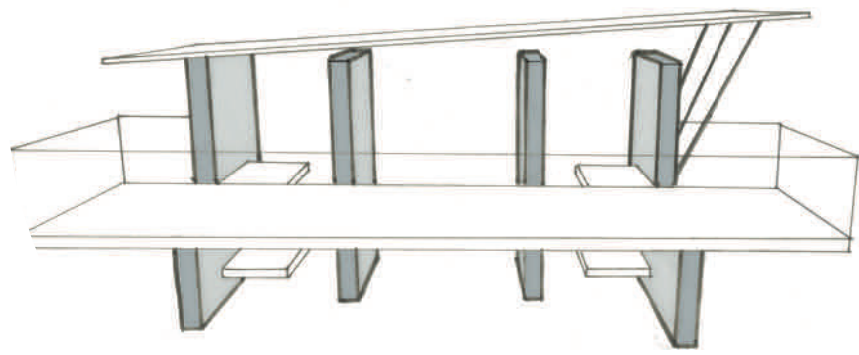
## BUILT FROM LATVIA

The vertical walls of *Intrinsic Balance* are made by the gathering of local rocks and amber stones, placed freely inside stainless-steel wire gabion baskets. Locally harvested timber slats and planes contrast the mass of the piers, referring back to ancient traditional building techniques. Almost the entirety of the structure is made from the materials of the Latvian landscape. Whereas history and culture and tradition can sometimes feel as abstract ideas, the assembling together of elements of the physical landscape encodes within *Intrinsic Balance* with the true spirit of its place, creating an iconic and indigeneous part of the landscape itself.



The functionality of the gabion walls make them suitable to be placed in various terrains with minimal disruption to the existing environment. Construction is simple and affordable – one must simply assemble the baskets and gather nearby rocks and amber to fill them. The filled baskets are connected together with wire, and are inserted into a recessed metal box anchored into the landscape. The box acts as foundation and subtle retaining wall, integrating the cabin into the landscape by creating the appearance that the stone and amber walls have emerged seamlessly from the geology below.





## CABIN DESIGN

The *Intrinsic Balance* cabins are designed to sleep four hikers with a main focus on openness and the use of natural materiality to provide a balanced space for hikers to rest while enjoying a beautiful view of the Baltic Sea. Designed to provide refuge and a framing of the scenery, the cabins inhabit the transitional zone between woodland and beach. A path leads to four muscular and simple gabion walls made of local rocks and amber stones, which open between for a full view of the sea. Hikers rest in either of the two screened-in pods, each with two sleeping platforms, nestled between the gabion walls and designed to provide open views toward the ocean. When not resting, hikers can enjoy a large, elevated balcony offering an incredible view of the water or gather together in the sheltered community space beneath the balcony.