

An aerial photograph of the James Madison University campus is shown on the left side of the slide. The image features a large, white, domed building with a red roof, surrounded by green lawns and other campus buildings. In the background, there are rolling hills and mountains under a cloudy sky. The right side of the slide is a solid purple color with a pattern of overlapping, semi-transparent diamond shapes.

James Madison University

Draft Campus Master Plan Update

SASAKI

Planning Principles

The JMU Experience

1. Support the academic and research mission (academic & research facilities)
2. Enhance the campus and student experience (housing, recreation)
3. Connect the campus districts
4. Improve the mobility experience (accessibility, pathways, bikes and parking)
5. Create a working landscape

NOTE: This plan is a partial draft of the JMU Master Plan update.

Building Age



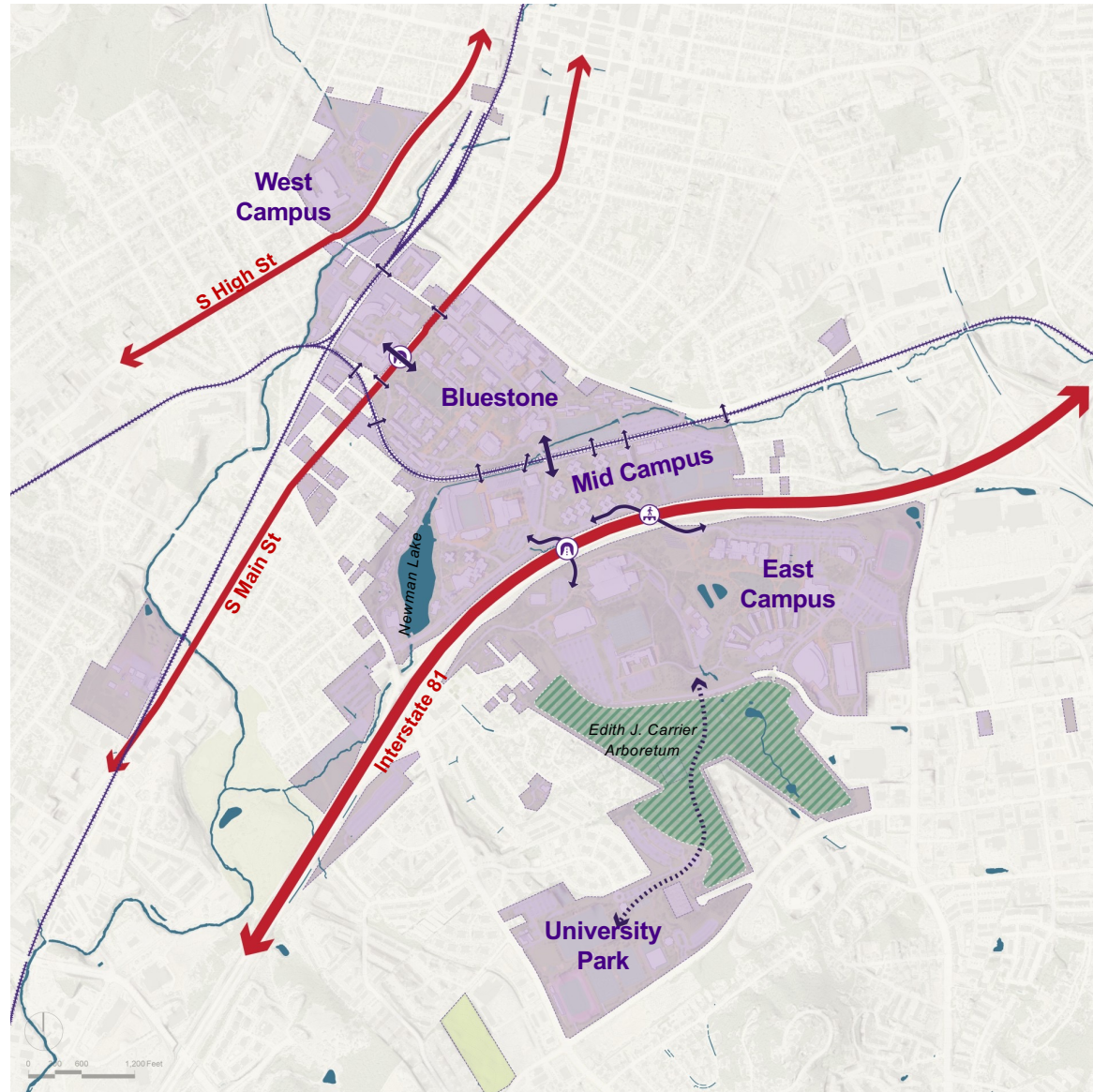
Campus Vision



Connectivity

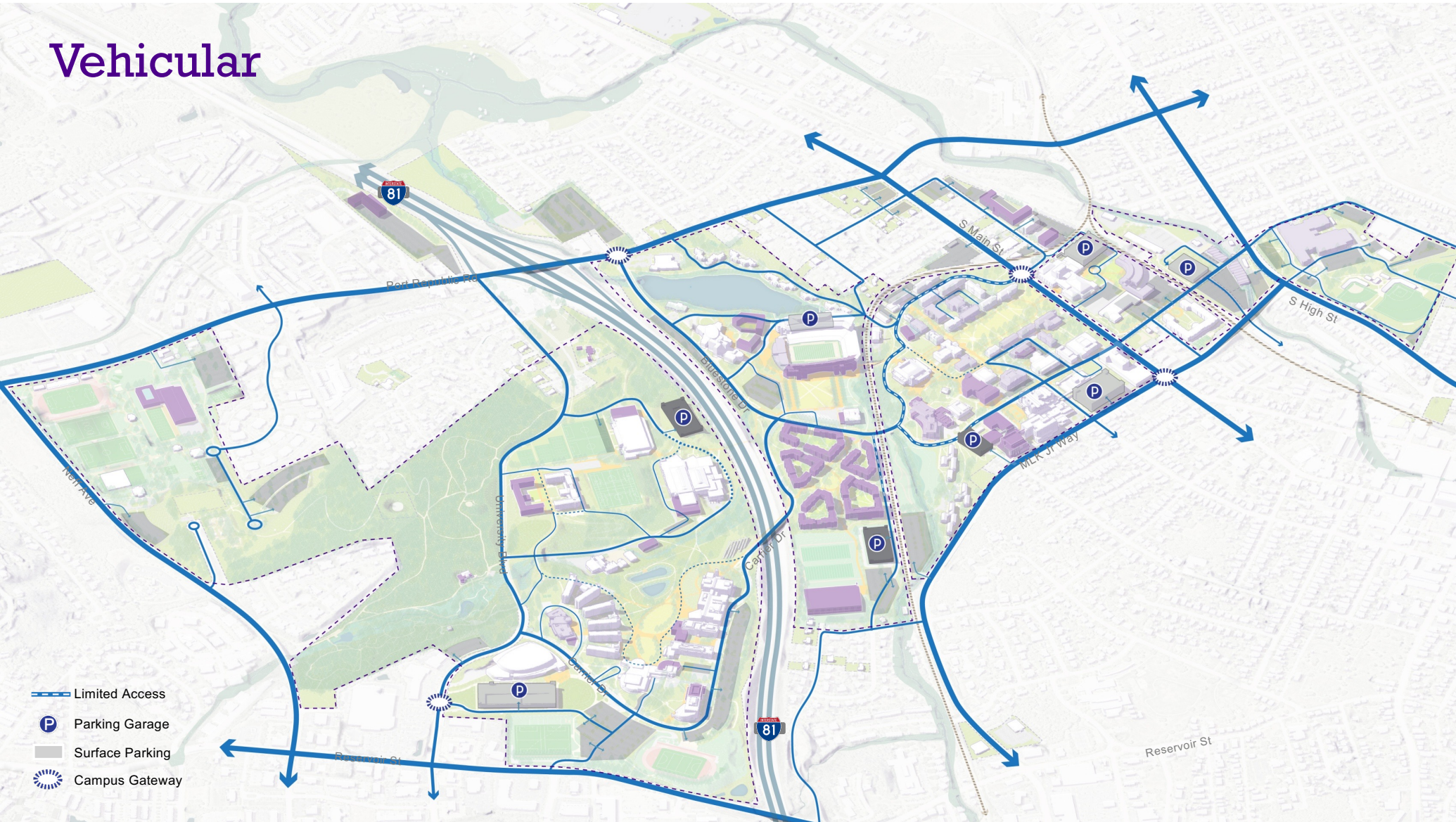
Major infrastructure and natural systems divide the campus and create **pedestrian connection and accessibility challenges**:

1. Railways
2. Highway / city streets
3. Elevation change
 - Bridge
 - Tunnel
4. Natural barriers
 - Water body
 - Arboretum



Vehicular

- Limited Access
- P Parking Garage
- Surface Parking
- ⊙ Campus Gateway



Union Area Landscape

Conceptual Improvements



Stadium Addition Vision

View inside the bowl



Bridge Connection To Stadium

Stadium
Expansion

IMU

SASAKI

Tailgate Experience
& Flex Landscape

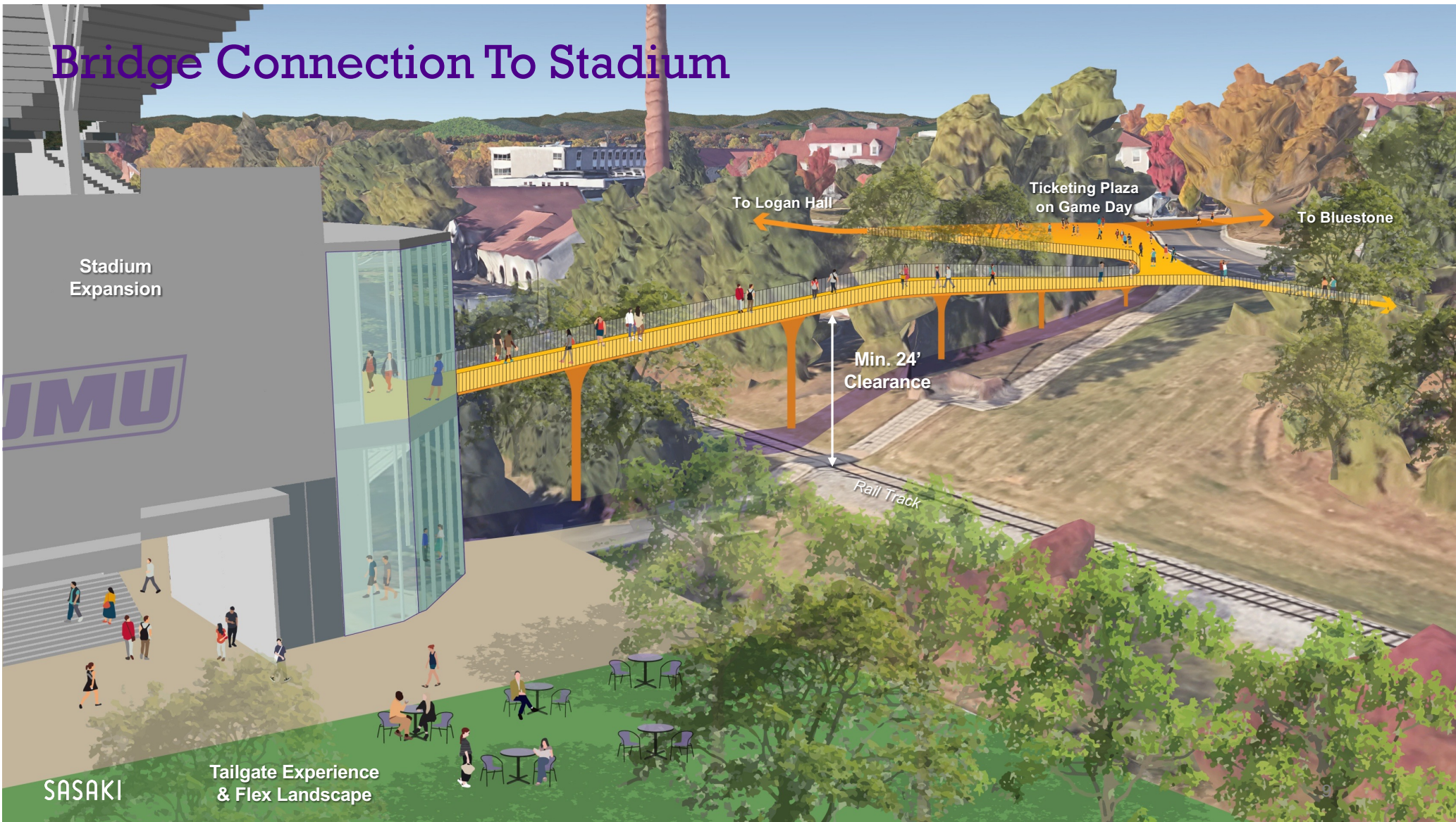
To Logan Hall

Ticketing Plaza
on Game Day

To Bluestone

Min. 24'
Clearance

Rail Track

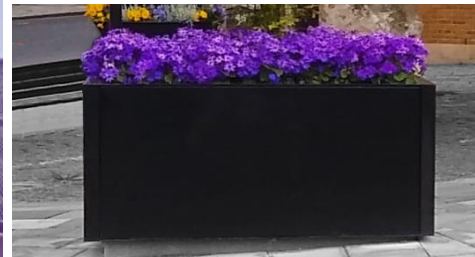
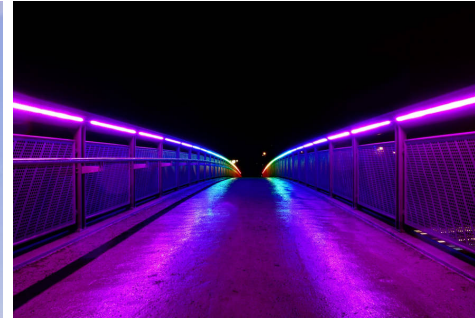


Physics and Chemistry Building Addition

SASAKI



Highway Bridge:



Vehicular: Potential New Garage Locations

