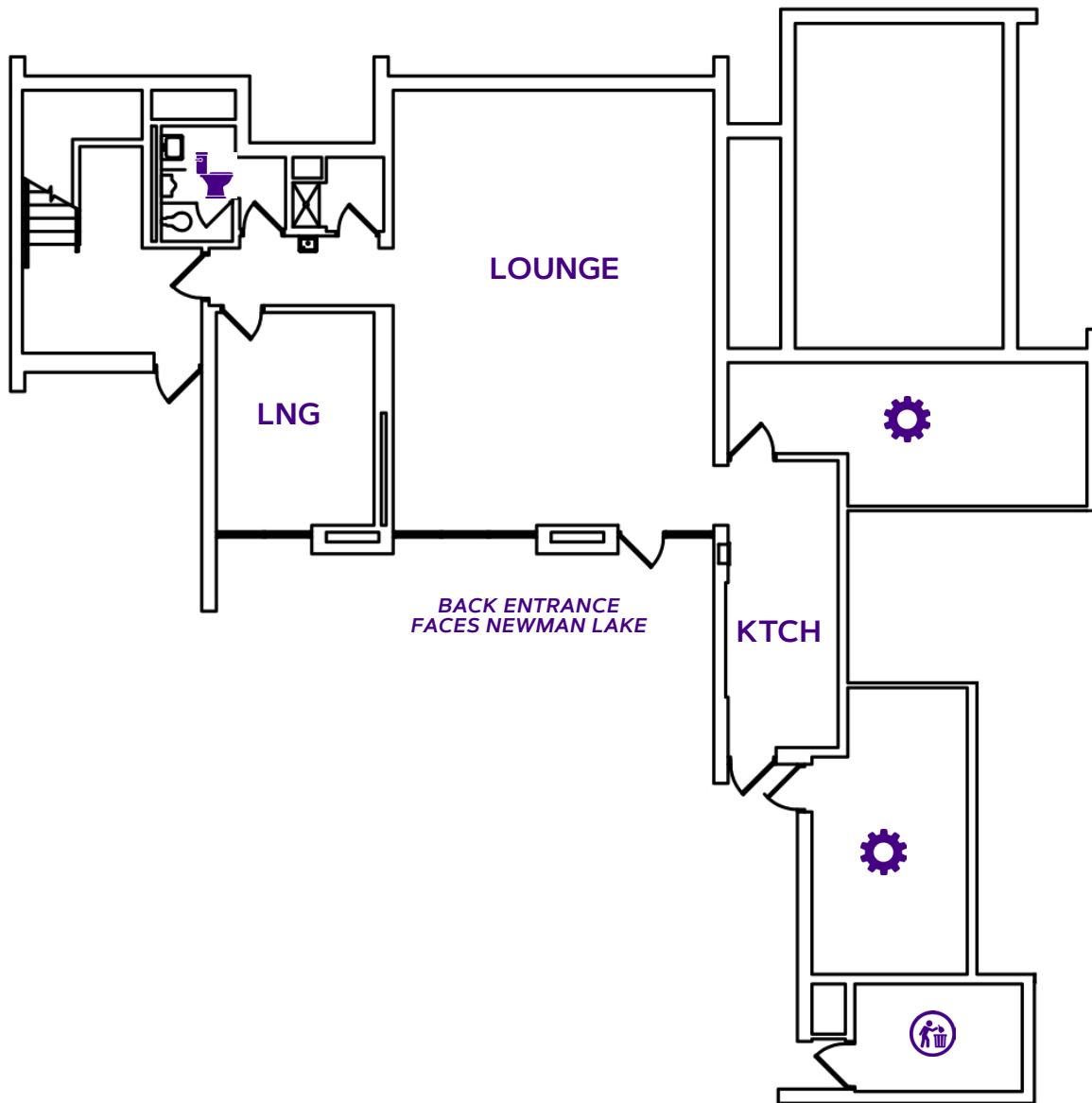








# CEDAR HALL

## BASEMENT

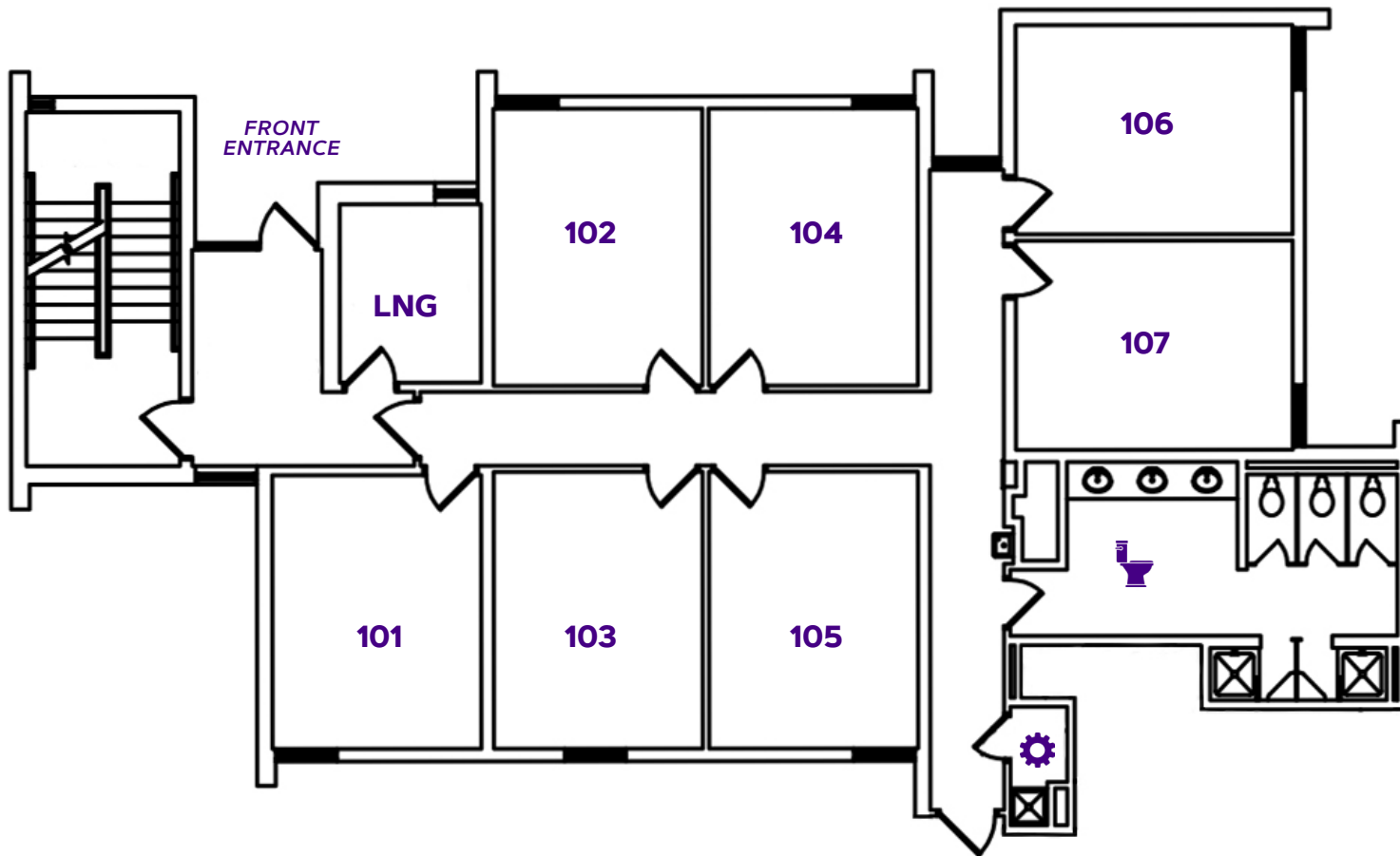


### LEGEND:

-  :Bathroom
-  :Elevator
-  :Mechanical Space/Misc. Use
-  :Trash Room/Disposal Area
-  :ADA Accessible Space
-  :Hearing Equipment
- HD:** Hall Director
- KTCH:** Kitchen/Kitchenette
- LDRY:** Laundry Room
- LNG:** Lounge  
Study Space/Room  
Programming Space

# CEDAR HALL

## FLOOR ONE

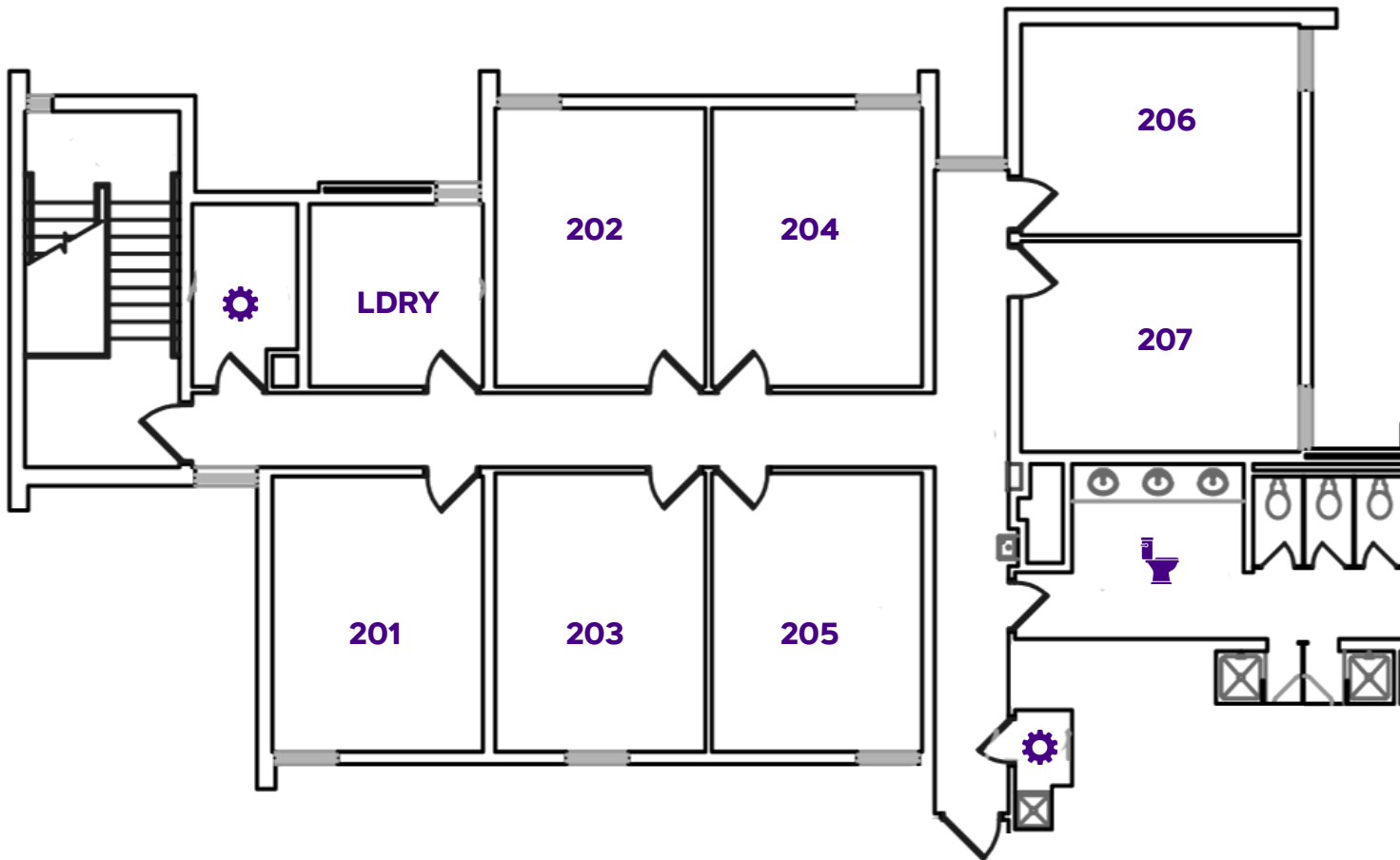


### LEGEND:







- : Bathroom
- : Elevator
- : Mechanical Space/Misc. Use
- : Trash Room/Disposal Area
- : ADA Accessible Space
- : Hearing Equipment
- HD**: Hall Director
- KTCH**: Kitchen/Kitchenette
- LDRY**: Laundry Room
- LNG**: Lounge  
Study Space/Room  
Programming Space

# CEDAR HALL

FLOOR TWO

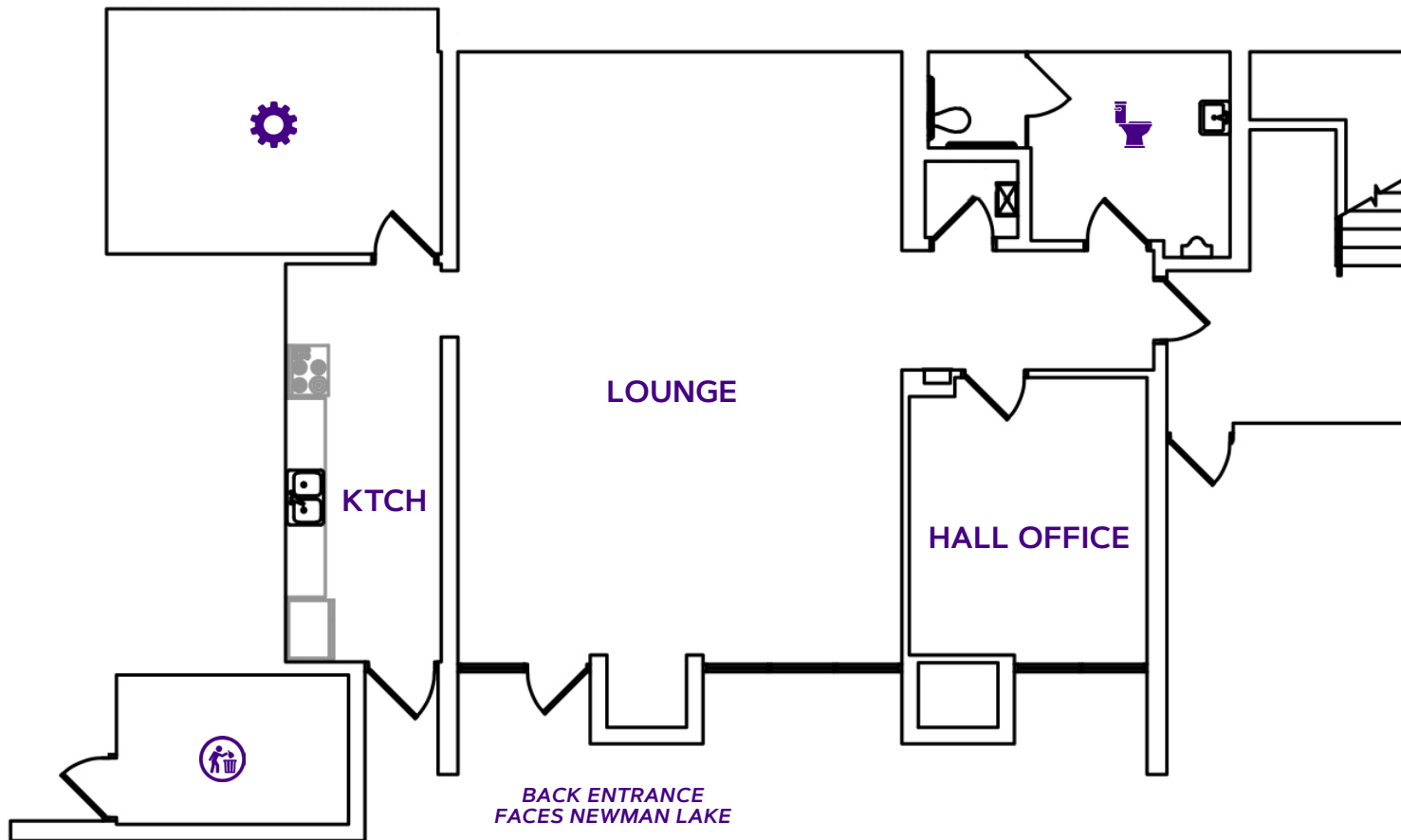


## LEGEND:







-  :Bathroom
-  :Elevator
-  :Mechanical Space/Misc. Use
-  :Trash Room/Disposal Area
-  :ADA Accessible Space
-  :Hearing Equipment
- HD:** Hall Director
- KTCH:** Kitchen/Kitchenette
- LDRY:** Laundry Room
- LNG:** Lounge  
Study Space/Room  
Programming Space

# DOGWOOD HALL

## GROUND FLOOR

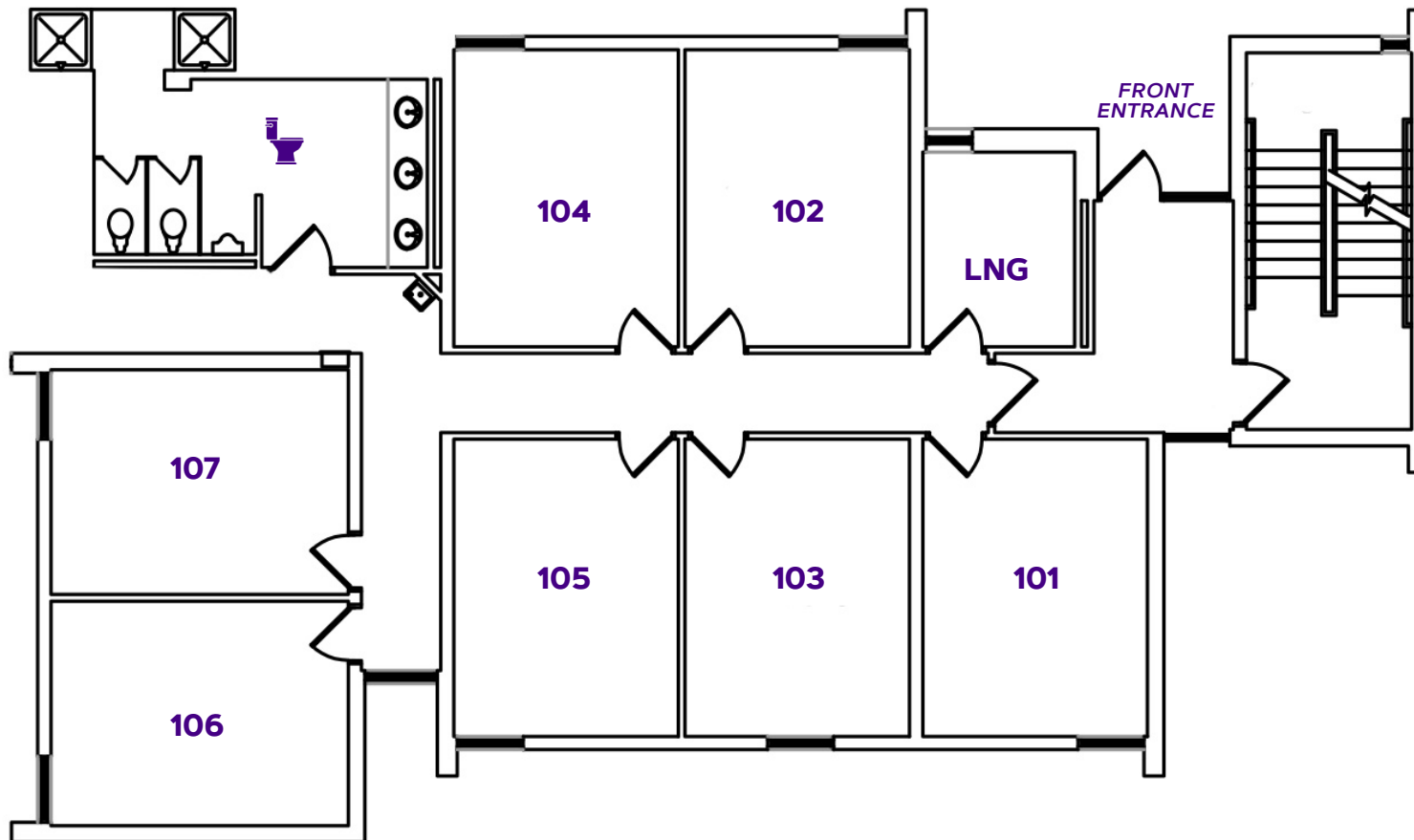


### LEGEND:







-  :Bathroom
-  :Elevator
-  :Mechanical Space/Misc. Use
-  :Trash Room/Disposal Area
-  :ADA Accessible Space
-  :Hearing Equipment
- HD:** Hall Director
- KTCH:** Kitchen/Kitchenette
- LDRY:** Laundry Room
- LNG:** Lounge  
Study Space/Room  
Programming Space

# DOGWOOD HALL

## FLOOR ONE

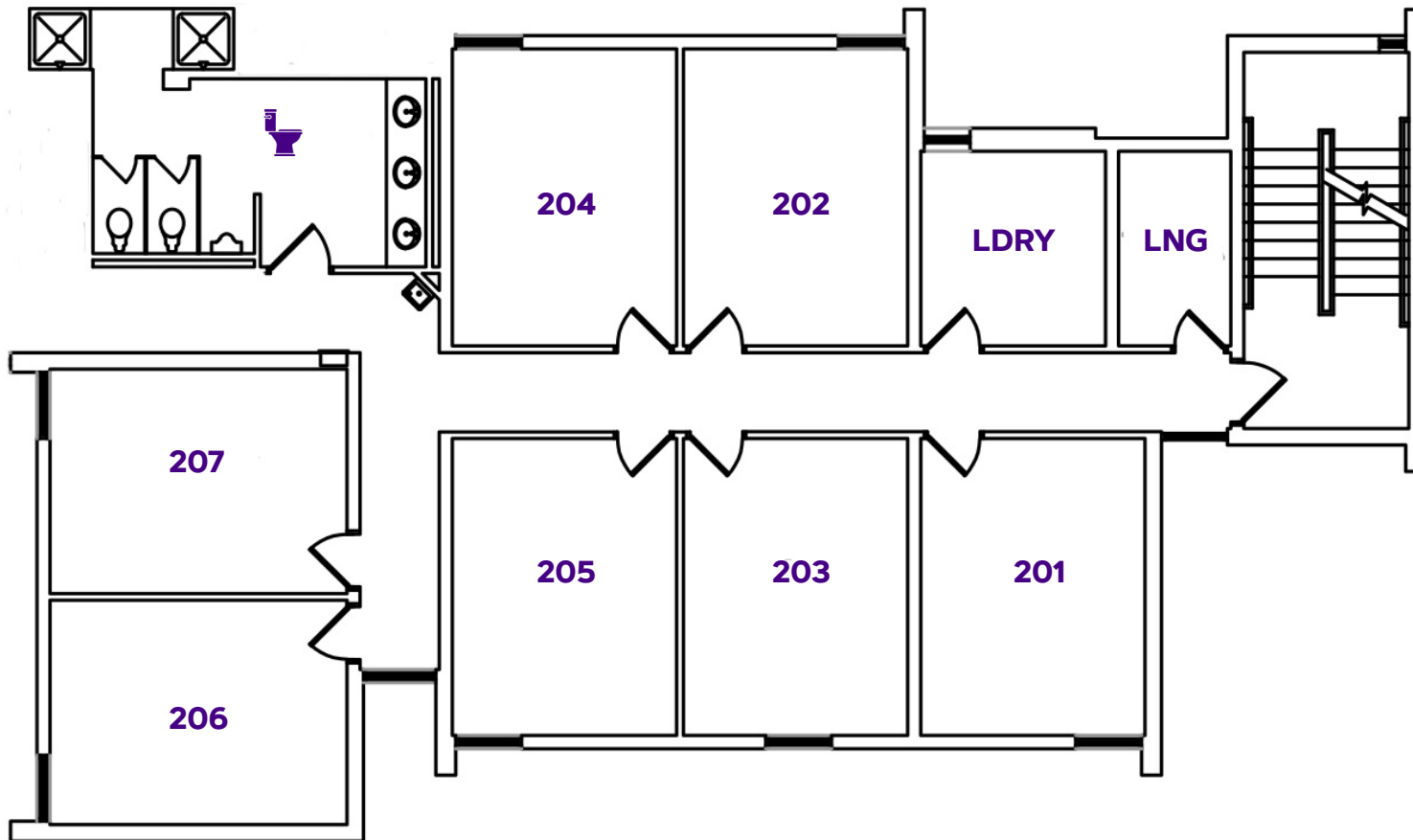


### LEGEND:

-  :Bathroom
-  :Elevator
-  :Mechanical Space/Misc. Use
-  :Trash Room/Disposal Area
-  :ADA Accessible Space
-  :Hearing Equipment
- HD:** Hall Director
- KTCH:** Kitchen/Kitchenette
- LDRY:** Laundry Room
- LNG:** Lounge  
Study Space/Room  
Programming Space

# DOGWOOD HALL

## FLOOR TWO



### LEGEND:

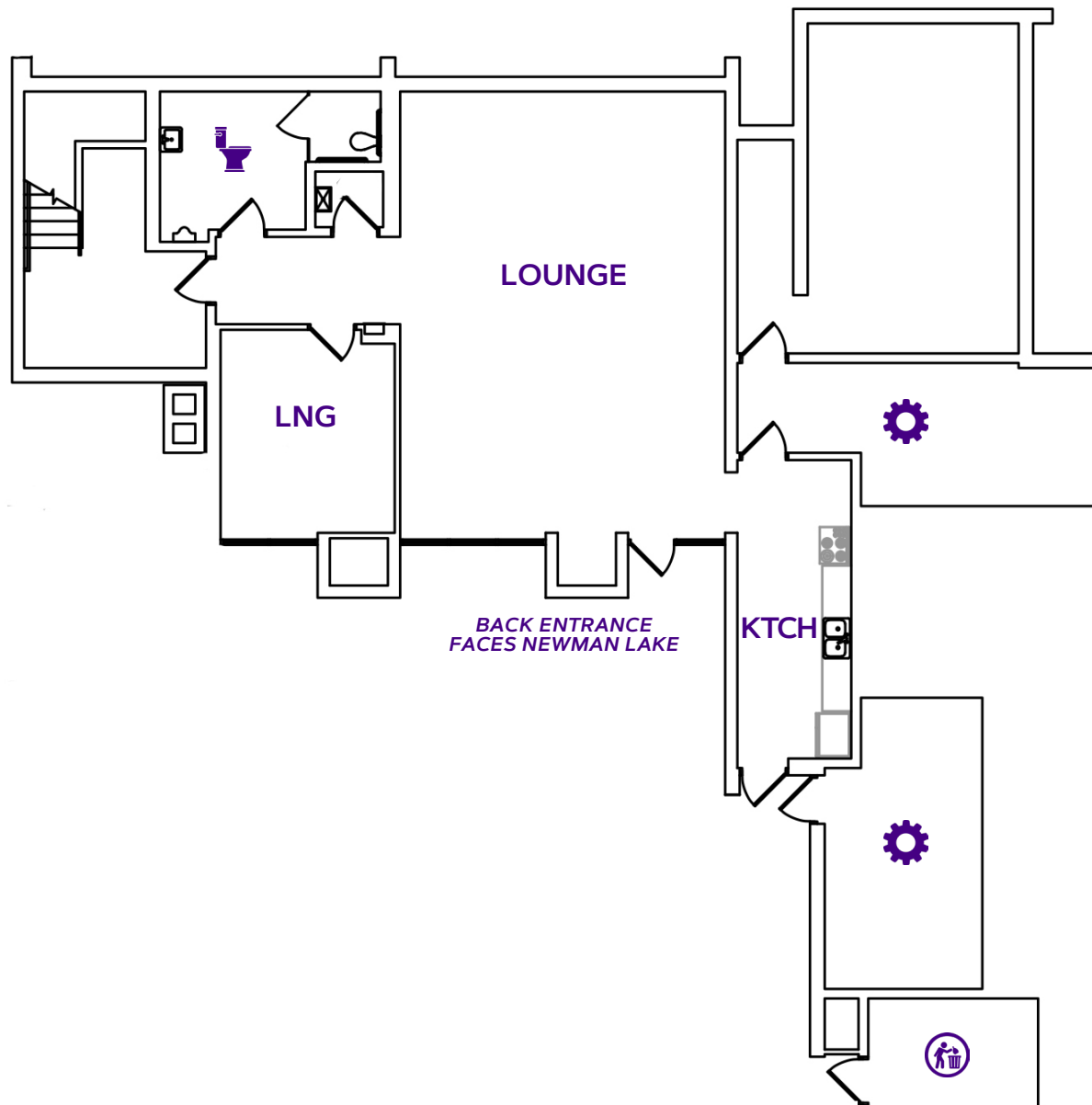
- : Bathroom
- : Elevator
- : Mechanical Space/Misc. Use
- : Trash Room/Disposal Area
- : ADA Accessible Space
- : Hearing Equipment
- HD: Hall Director
- KTCH: Kitchen/Kitchenette
- LDRY: Laundry Room
- LNG: Lounge  
Study Space/Room  
Programming Space









Residence Life

# MAGNOLIA HALL

## BASEMENT

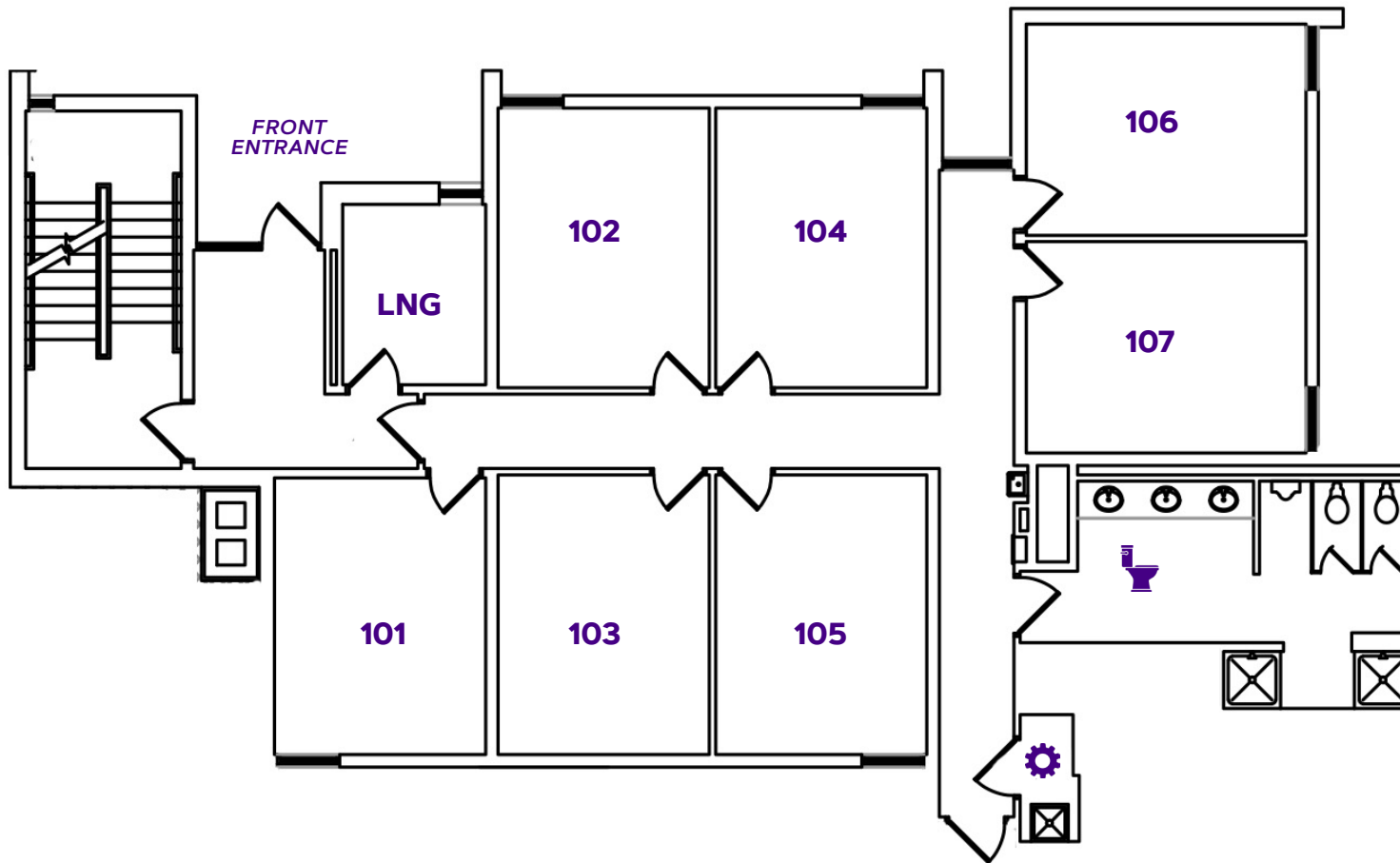


### LEGEND:







-  :Bathroom
-  :Elevator
-  :Mechanical Space/Misc. Use
-  :Trash Room/Disposal Area
-  :ADA Accessible Space
-  :Hearing Equipment
- HD:** Hall Director
- KTCH:** Kitchen/Kitchenette
- LDRY:** Laundry Room
- LNG:** Lounge  
Study Space/Room  
Programming Space

# MAGNOLIA HALL

## FLOOR ONE



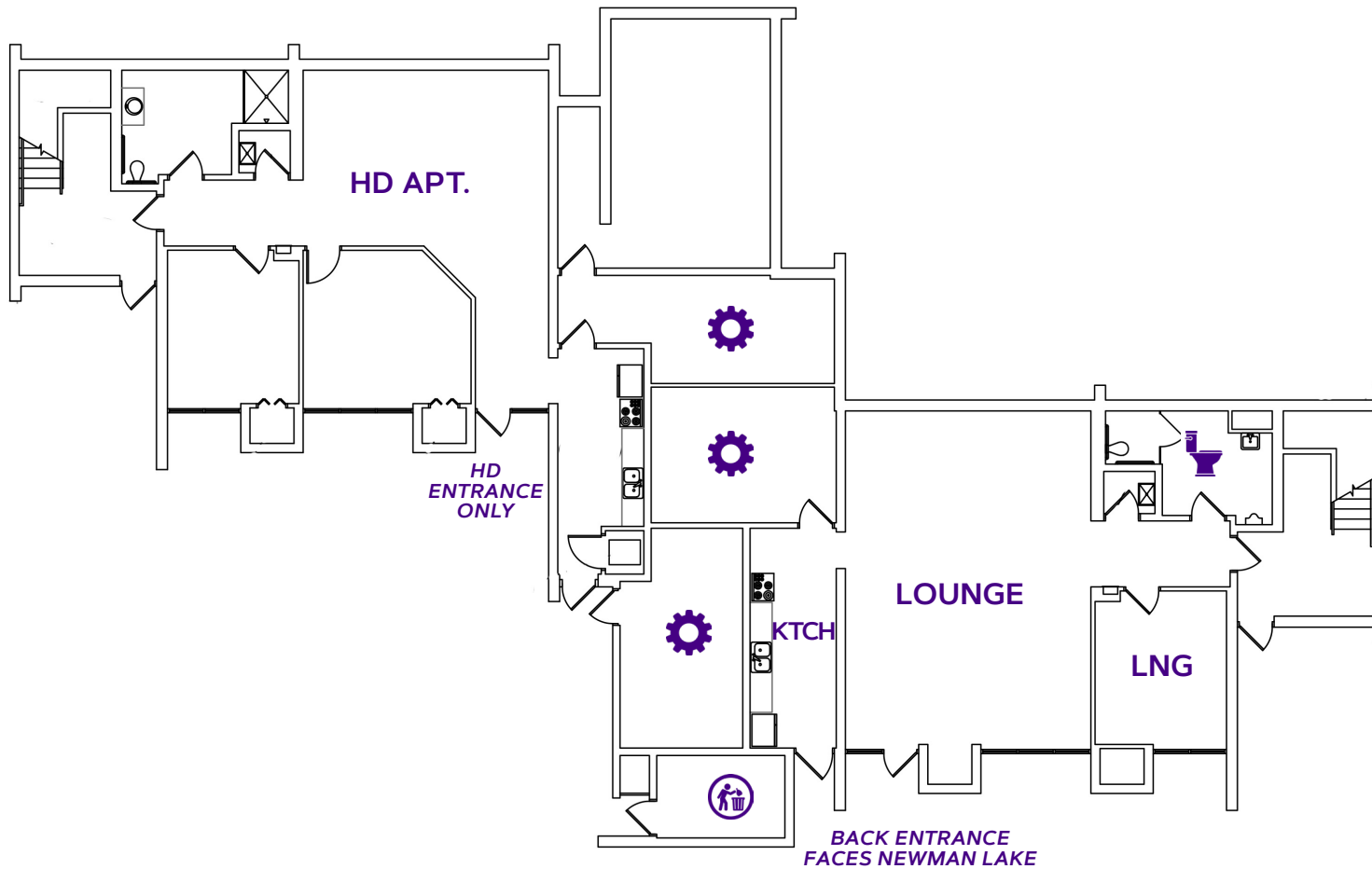
### LEGEND:

-  :Bathroom
-  :Elevator
-  :Mechanical Space/Misc. Use
-  :Trash Room/Disposal Area
-  :ADA Accessible Space
-  :Hearing Equipment
- HD: Hall Director
- KTCH: Kitchen/Kitchenette
- LDRY: Laundry Room
- LNG: Lounge  
Study Space/Room  
Programming Space



# OAK HALL

## GROUND FLOOR



### LEGEND:

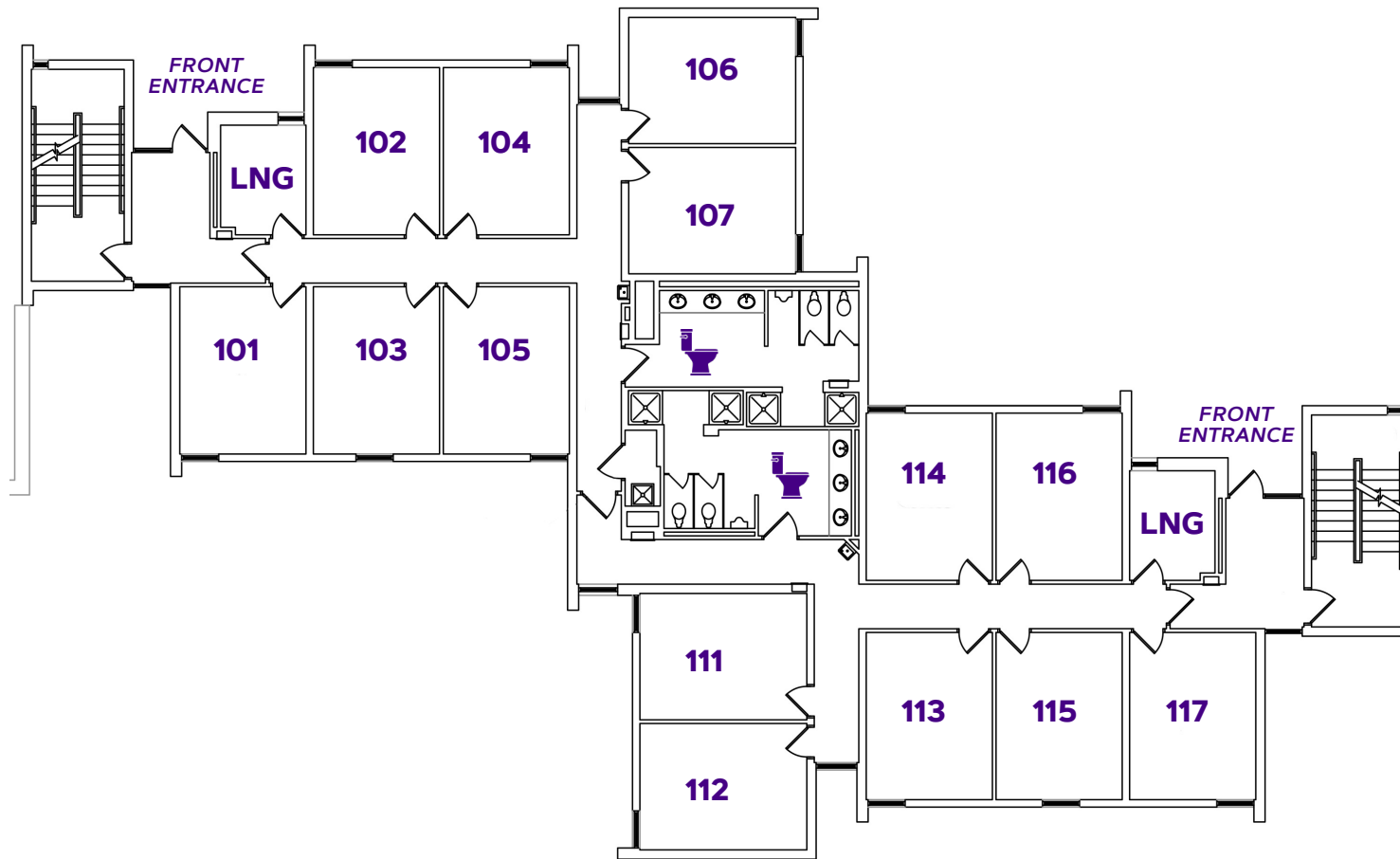
- : Bathroom
- : Elevator
- : Mechanical Space/Misc. Use
- : Trash Room/Disposal Area
- : ADA Accessible Space
- : Hearing Equipment
- HD:** Hall Director
- KTCH:** Kitchen/Kitchenette
- LDRY:** Laundry Room
- LNG:** Lounge  
Study Space/Room  
Programming Space









Residence Life

# OAK HALL

## FLOOR ONE

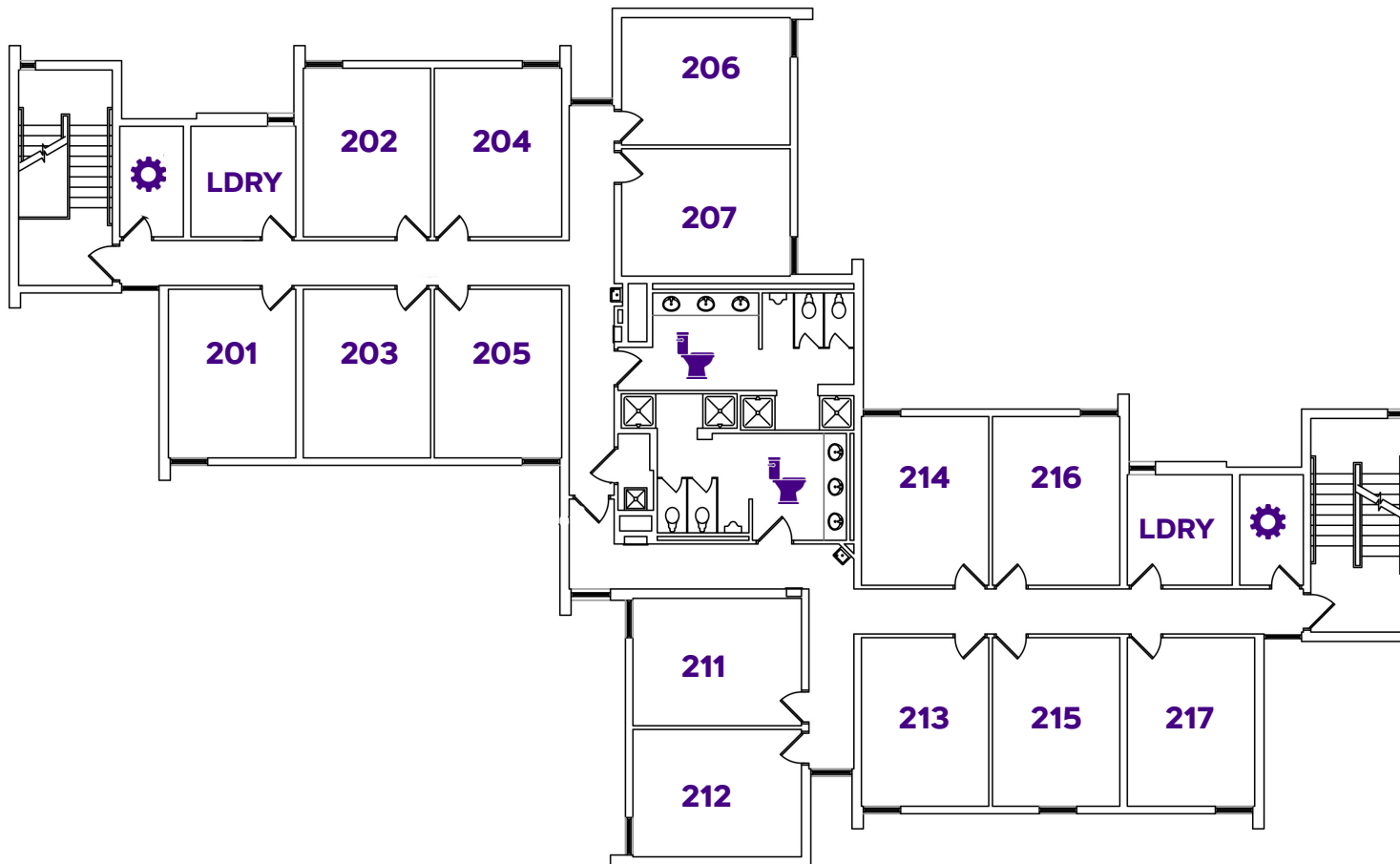


### LEGEND:







-  :Bathroom
-  :Elevator
-  :Mechanical Space/Misc. Use
-  :Trash Room/Disposal Area
-  :ADA Accessible Space
-  :Hearing Equipment
- HD: Hall Director
- KTCH: Kitchen/Kitchenette
- LDRY: Laundry Room
- LNG: Lounge  
Study Space/Room  
Programming Space

# OAK HALL

## FLOOR TWO



### LEGEND:

-  : Bathroom
-  : Elevator
-  : Mechanical Space/Misc. Use
-  : Trash Room/Disposal Area
-  : ADA Accessible Space
-  : Hearing Equipment
- HD:** Hall Director
- KTCH:** Kitchen/Kitchenette
- LDRY:** Laundry Room
- LANG:** Lounge  
Study Space/Room  
Programming Space

# TREE HOUSES

## ACCESSIBLE DESCRIPTION OF FLOOR PLAN

---

**COMPLETED:** 1978

**CAPACITY:**

**Cedar Hall, Dogwood Hall, Magnolia Hall:** 27 residents each

**Oak Hall:** 54 Residents

Rectangular buildings with two floors and a basement. There are two entrances into the basement facing the service road. One entrance is on the far corner of the building and leads into the stairwell. The other entrance leads into the lounge. In the lounge there will be a full kitchen to the right or left of you with a small hallway across the lounge from its doorway. The small hallway has a study lounge, housekeeping closet, bathroom, and door to the stairwell.

The first floor has one entrance facing the trees or basketball court. This entrance leads into the foyer where the stairwell will be on one side of you and a hallway on the other. Down the hallway is a study room, bedrooms, and a community bathroom near the end. At the very end of the hallway is the door. This door divides two treehouses and remains closed at all times. Note that two of the bedrooms are around a corner from the main hallway. The bathroom is past this corner and the bedrooms. The second floor has the same set up but also contains a storage room and laundry room after coming up the stairs.

The Hall Office for the Tree Houses is in the Dogwood basement lounge and replaces the study room.

***Disclaimer for Oak Hall:***

Like all Tree House buildings, Oak Hall is made of two "Tree Houses", however, these are combined to make one large building, so the door past the bathroom has been removed and creates a connection between the two buildings. The two sides are mirror images of each other.

Oak Hall has only one lounge instead of two. The second lounge was transformed into the Hall Director's apartment.