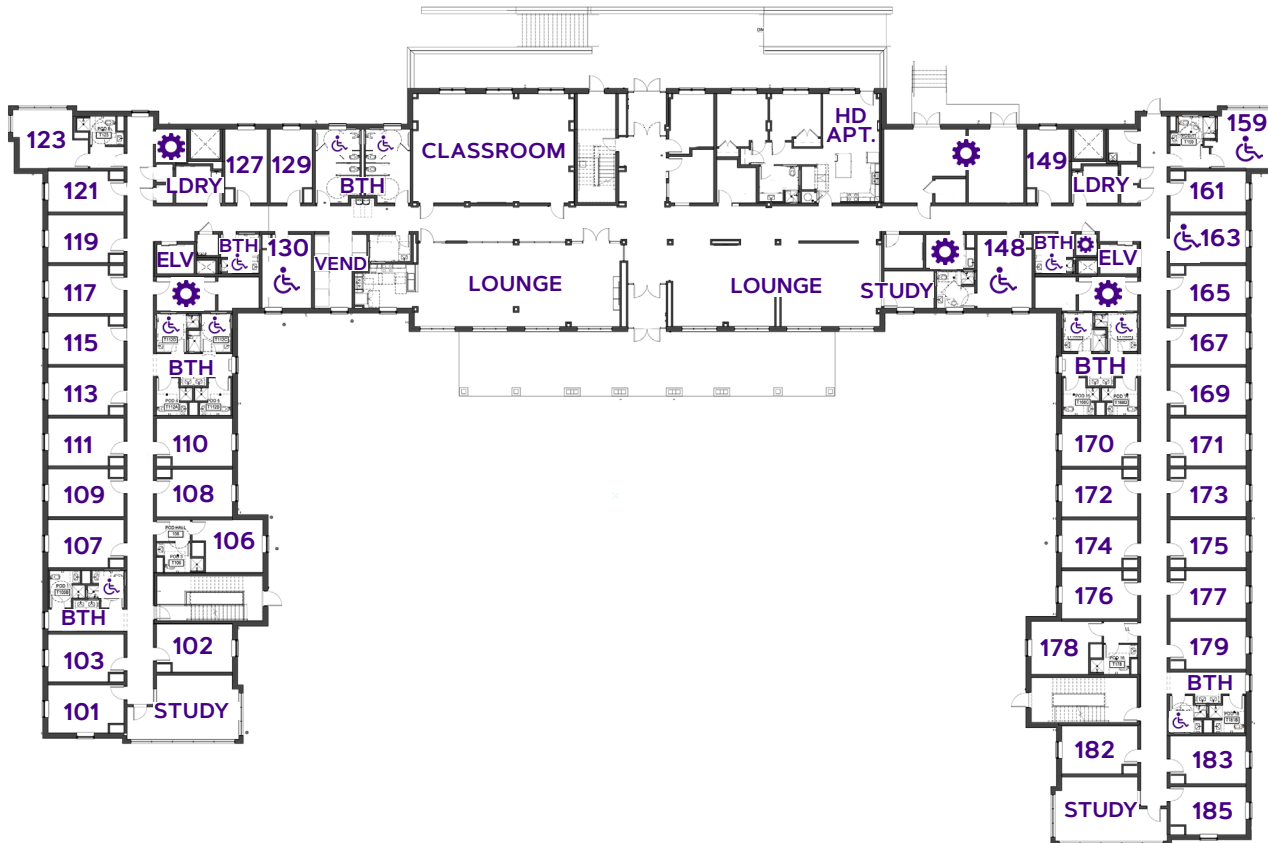


POTOMAC HALL

FLOOR ONE



LEGEND:

BTH: Bathroom

ELEV: Elevator

HD: Hall Director Office/Apartment

STUDY: Study Room/Solo Study Space

LNG: Lounge Space/TV Room

KTCH: Kitchen/Kitchenette

LDRY: Laundry Room

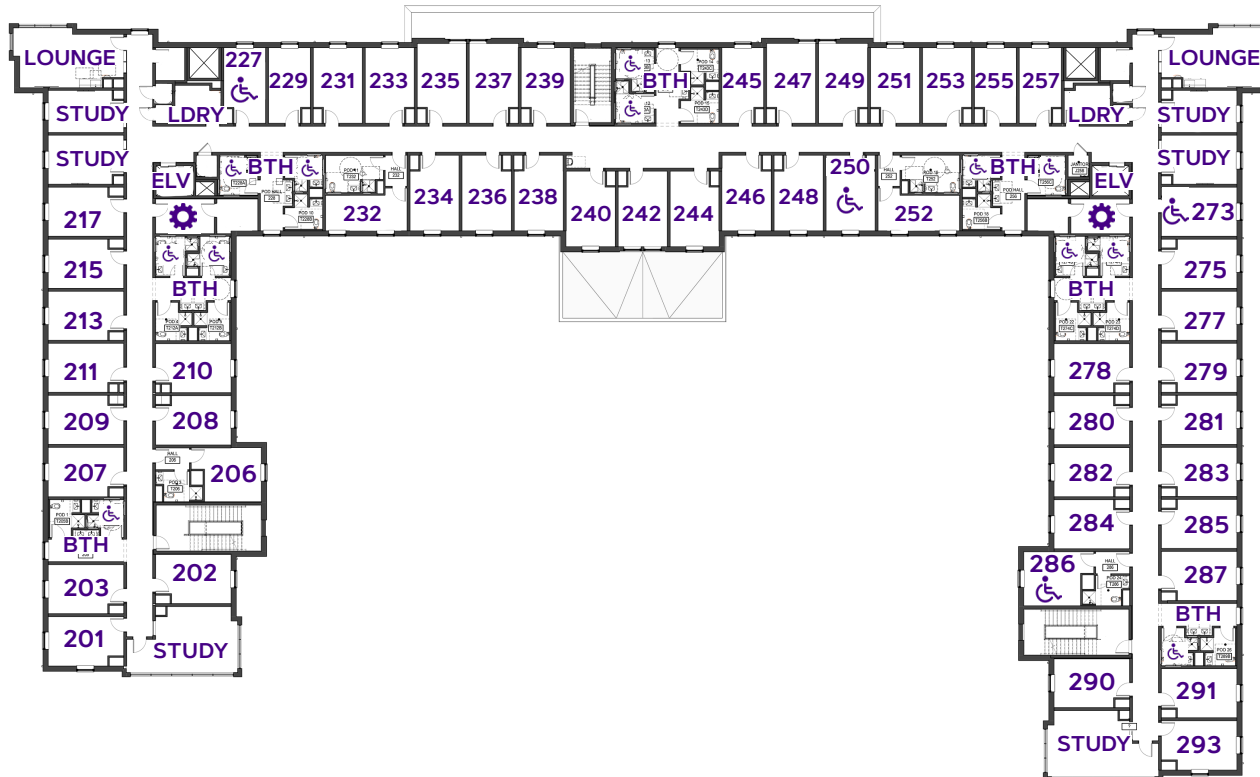
⚙️: Mechanical Space/Misc. Use

♿️: ADA Accessible Space

🔊: Hearing Impaired Equipment Present

POTOMAC HALL

FLOOR TWO



LEGEND:

BTH: Bathroom

ELEV: Elevator

HD: Hall Director Office/Apartment

STUDY: Study Room/Solo Study Space

LNG: Lounge Space/TV Room

KTCH: Kitchen/Kitchenette

LDRY: Laundry Room

⚙️: Mechanical Space/Misc. Use

♿️: ADA Accessible Space

👂: Hearing Impaired Equipment Present

POTOMAC HALL

FLOOR THREE



LEGEND:

BTH: Bathroom

ELEV: Elevator

HD: Hall Director Office/Apartment

STUDY: Study Room/Solo Study Space

LNG: Lounge Space/TV Room

KTCH: Kitchen/Kitchenette

LDRY: Laundry Room

⚙️: Mechanical Space/Misc. Use

♿️: ADA Accessible Space

👂: Hearing Impaired Equipment Present

POTOMAC HALL

FLOOR FOUR



LEGEND:

BTH: Bathroom

ELEV: Elevator

HD: Hall Director Office/Apartment

STUDY: Study Room/Solo Study Space

LNG: Lounge Space/TV Room

KTCH: Kitchen/Kitchenette

LDRY: Laundry Room

⚙️: Mechanical Space/Misc. Use

♿️: ADA Accessible Space

👂: Hearing Impaired Equipment Present

POTOMAC HALL

FLOOR FIVE



LEGEND:

BTH: Bathroom

ELEV: Elevator

HD: Hall Director Office/Apartment

STUDY: Study Room/Solo Study Space

LNG: Lounge Space/TV Room

KTCH: Kitchen/Kitchenette

LDRY: Laundry Room

⚙️: Mechanical Space/Misc. Use

♿️: ADA Accessible Space

👂: Hearing Impaired Equipment Present

POTOMAC HALL

DESCRIPTION OF FLOOR PLAN

The building is constructed in a U-Shaped configuration. It has five floors and a basement. The basement contains a typical model double bedroom and bathroom for Admissions tours. There is also a faculty apartment and mechanical spaces in the basement.

Main entrances for the First floor are on the back side of the building at the center door on the parking lot side and from the courtyard center door. There are also two stairwell entrances from the courtyard into either wing of the horseshoe. Finally there is a fifth entrance into the corner of the building on the left if you are approaching from the backside.

Entering from the main entrance on the back side of the building, there is an accessible ramp to the double doors. The exterior doors open into a vestibule, where a resident's card will need to be used to unlock the door and operate the automatic door opener. Offices for the Hall Director, Hall Staff and Faculty are located on the left hand side. On the right is the TV Lounge, Recreation room and community kitchen. There is also a classroom, vending area and two public restrooms and a laundry room before you reach the elevator in the corner. If you pass the elevator you will turn left down the hall of residential rooms and POD style bathroom spaces, (sinks in the common area and two to four doors to fully private bathrooms, containing a shower, toilet and sink.) At the end of the hallway is a community lounge.

Entering from the main back door and turning left, there is an open learning commons, with numerous different styles of furniture. There is the door to the Hall Directors apartment, 2 small study lounges, a lactation room, laundry, and elevator. The residential space down the wing mirrors the other side of the hall.

On the upper floors, the wings are similar to the first floor but have more lounge spaces in the corners and also 3 solo study rooms for privacy and solitude. Each corner of the horseshoe has a TV lounge with a microwave, sink, and bottle filler. Across from both elevators are the laundry rooms. The center wing of the building has residential rooms and bathrooms like the wings on either side.

Potomac Hall houses 460 residents and was completed in 2025.

LEGEND:

BTH: Bathroom

ELEV: Elevator

HD: Hall Director Office/Apartment

STUDY: Study Room/Solo Study Space

LNG: Lounge Space/TV Room

KTCH: Kitchen/Kitchenette

LDRY: Laundry Room

 :Mechanical Space/Misc. Use

 :ADA Accessible Space

 :Hearing Impaired Equipment Present



Residence Life