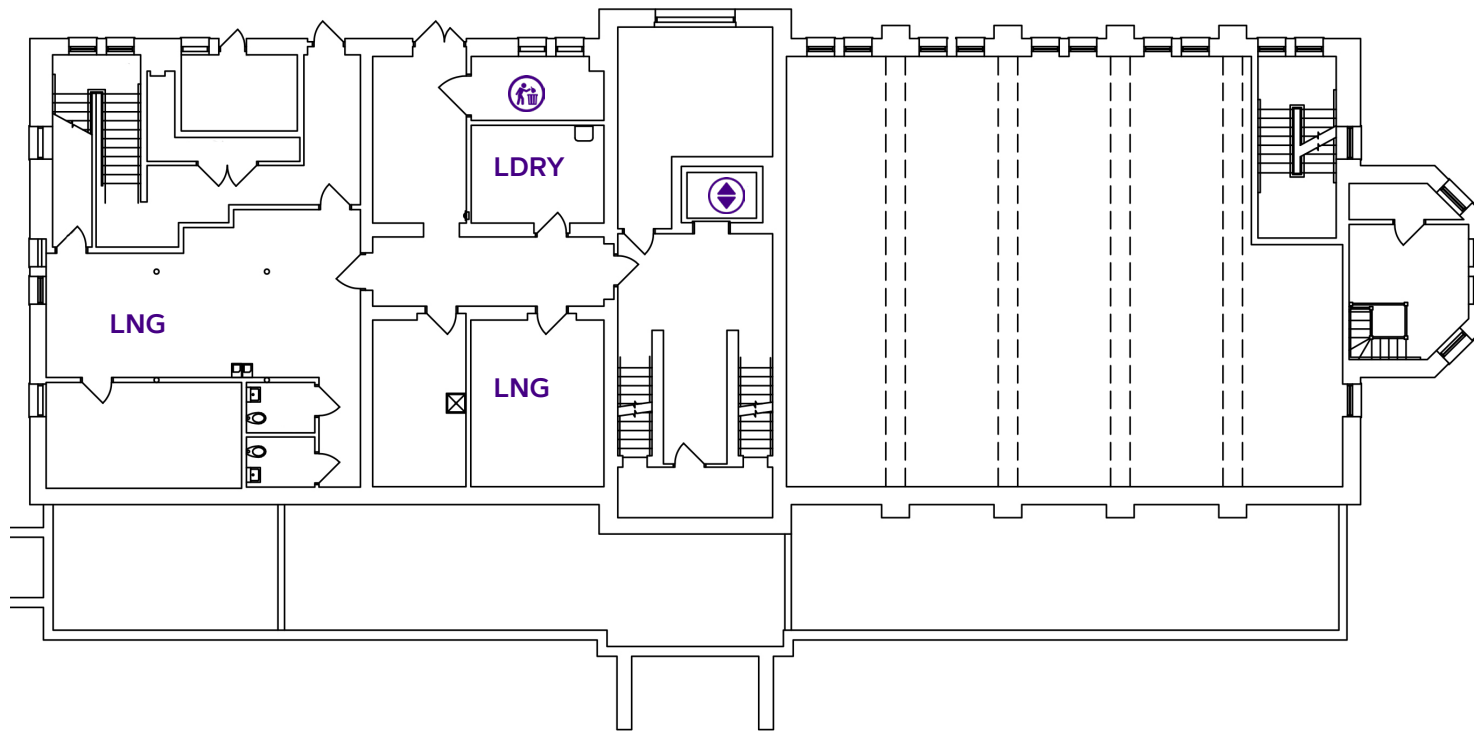








HARPER ALLEN-LEE HALL

BASEMENT

BACK ENTRANCE(S)
FACES CONVERSE HALL

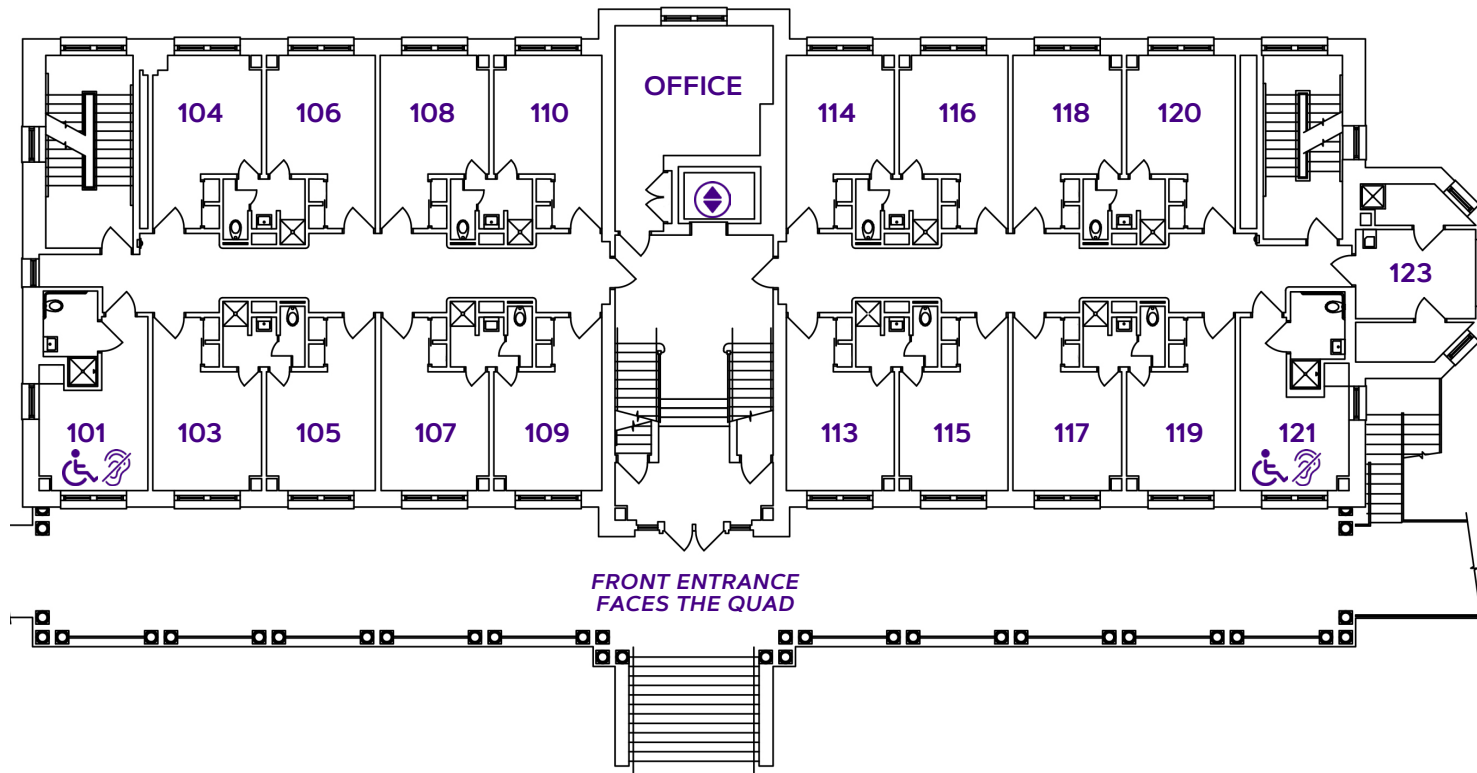


LEGEND:

-  :Bathroom
-  :Elevator
-  :Mechanical Space/Misc. Use
-  :Trash Room/Disposal Area
-  :ADA Accessible Space
-  :Hearing Equipment
- HD:** Hall Director
- KTCH:** Kitchen/Kitchenette
- LDRY:** Laundry Room
- LNG:** Lounge
Study Space/Room
Programming Space

HARPER ALLEN-LEE HALL

FLOOR ONE



LEGEND:

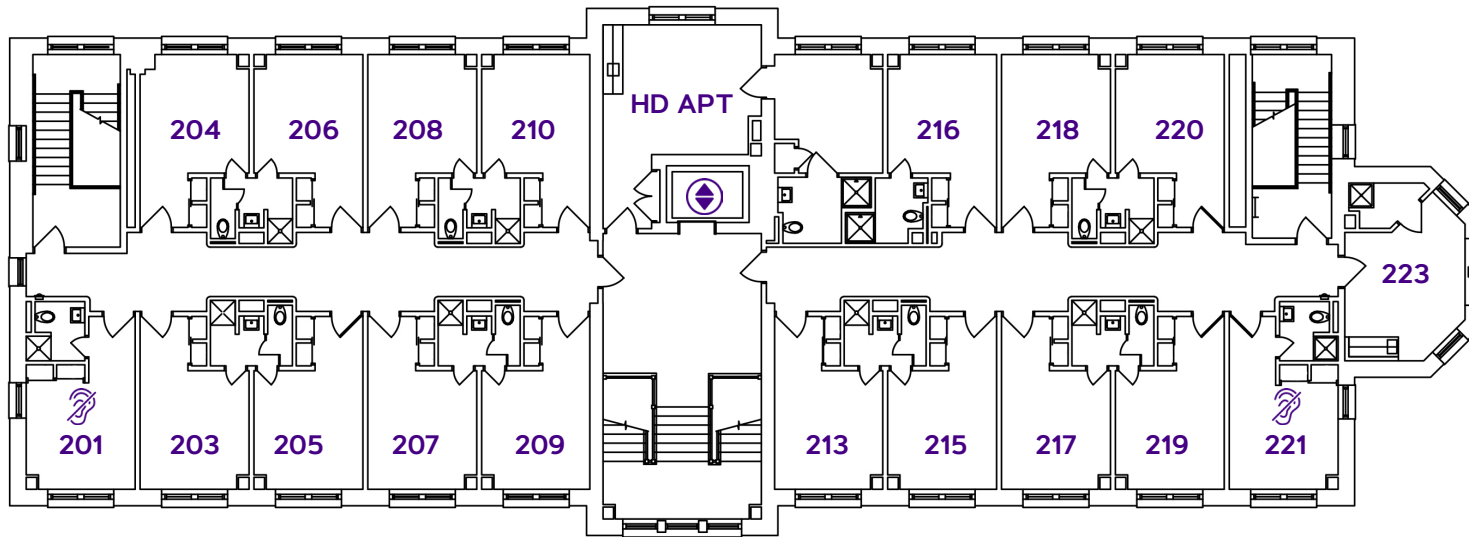
- : Bathroom
- : Elevator
- : Mechanical Space/Misc. Use
- : Trash Room/Disposal Area
- : ADA Accessible Space
- : Hearing Equipment
- HD: Hall Director
- KTCH: Kitchen/Kitchenette
- LDRY: Laundry Room
- LNG: Lounge
Study Space/Room
Programming Space









Residence Life

HARPER ALLEN-LEE HALL

FLOOR TWO



LEGEND:

-  : Bathroom
-  : Elevator
-  : Mechanical Space/Misc. Use
-  : Trash Room/Disposal Area
-  : ADA Accessible Space
-  : Hearing Equipment
- HD:** Hall Director
- KTCH:** Kitchen/Kitchenette
- LDRY:** Laundry Room
- LNG:** Lounge
Study Space/Room
Programming Space

HARPER ALLEN-LEE HALL

ACCESSIBLE DESCRIPTION OF FLOOR PLAN

COMPLETED: 1964, Renovated in 2000

CAPACITY: 64 residents

This is a rectangular building with two floors and a basement. The basement has one entrance on the back side facing the parking lot. Upon entering here, you are in a small corridor, and the trash room is on your left. At the end of this corridor, there is a lounge on your right, storage in front of you, and a hallway to your left. At the end of the hallway, there is a lobby in front of you, a study room on your right, and a laundry room on your left. In the lobby, there are two stairwells to the right and the elevator to the left. There is another entrance on the back side to the left. This door leads into a stairwell. Going up the stairs leads to the first-floor bedroom hallway; going downstairs leads to the UREC dance space.

The first floor has one entrance at the front facing the quad. This entrance has only stairs. After going into this entrance, there is another small flight of stairs to bring you into the lobby. Here, the office is directly opposite you, and the elevator is to the right of the office. On either side of you is a hallway of bedrooms. There is a stairwell at the end of each hallway. Also at the end of the hallway to your right is a kitchen. The second floor is the same set up, except the hall office is replaced with the hall director apartment.