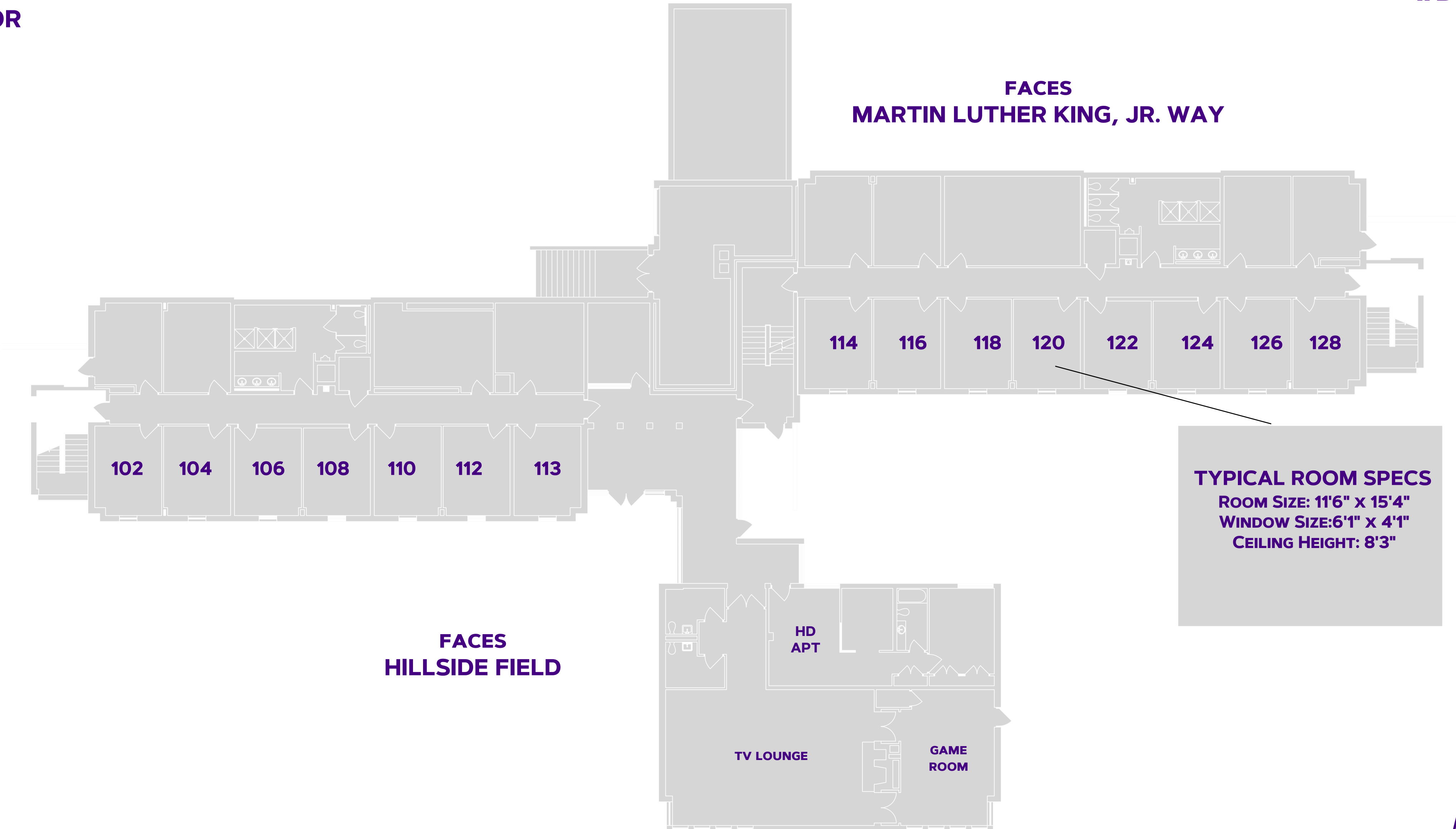


BELL HALL

FIRST FLOOR

#DukesLiveClose
#DukesLiveSupported
#DukesLIVEON



TYPICAL ROOM SPECS
ROOM SIZE: 11'6" X 15'4"
WINDOW SIZE: 6'1" X 4'1"
CEILING HEIGHT: 8'3"

ROOM FURNITURE:
- BEDS, CHAIRS, DESKS, DRAWERS
- FREE-STANDING WARDROBES

FOR MORE INFORMATION ON HALLS VISIT:
WWW.JMU.EDU/ORL/OUR-RESIDENCE-HALLS/INDEX.SHTML

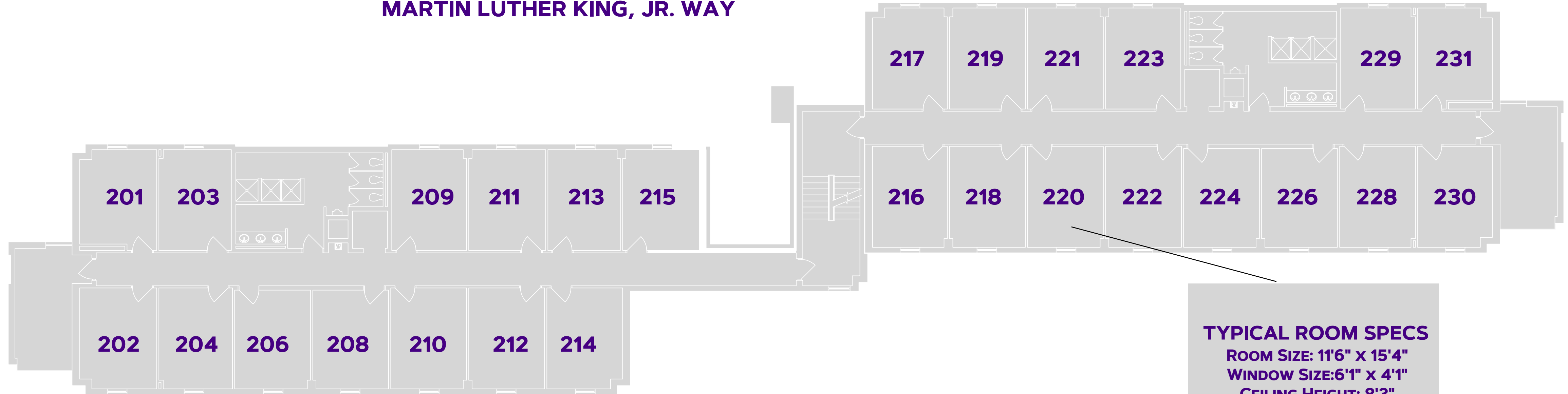


BELL HALL

SECOND FLOOR

#DukesLiveClose
#DukesLiveSupported
#DukesLIVEON

FACES
MARTIN LUTHER KING, JR. WAY



TYPICAL ROOM SPECS
ROOM SIZE: 11'6" x 15'4"
WINDOW SIZE: 6'1" x 4'1"
CEILING HEIGHT: 8'3"

FACES
HILLSIDE FIELD

ROOM FURNITURE:
- BEDS, CHAIRS, DESKS, DRAWERS
- FREE-STANDING WARDROBES

FOR MORE INFORMATION ON HALLS VISIT:
WWW.JMU.EDU/ORL/OUR-RESIDENCE-HALLS/INDEX.SHTML

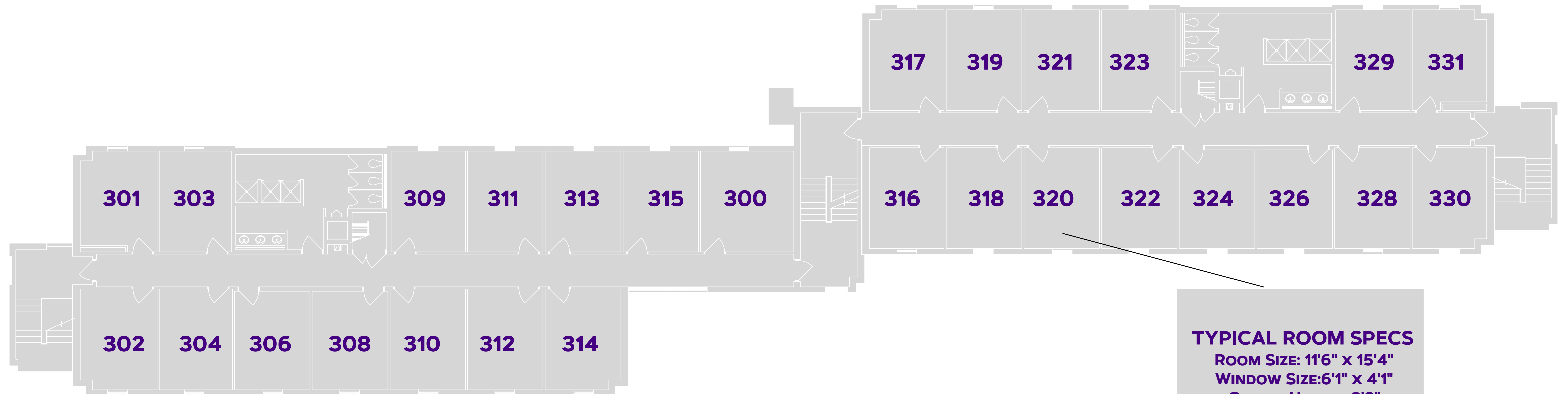


BELL HALL

THIRD FLOOR

#DukesLiveClose
#DukesLiveSupported
#DukesLIVEON

FACES
MARTIN LUTHER KING, JR. WAY



FACES
HILLSIDE FIELD

TYPICAL ROOM SPECS
ROOM SIZE: 11'6" x 15'4"
WINDOW SIZE: 6'1" x 4'1"
CEILING HEIGHT: 8'3"

ROOM FURNITURE:
- BEDS, CHAIRS, DESKS, DRAWERS
- FREE-STANDING WARDROBES

FOR MORE INFORMATION ON HALLS VISIT:
WWW.JMU.EDU/ORL/OUR-RESIDENCE-HALLS/INDEX.SHTML

