

Welcome to First Year Orientation

Dr. Marquis McGee
Director,
University Advising

Libby Westley
Director,
University Career Center



Agenda:

- JMU Academics and Advising
- Preparing Your Student to be Career Ready
- Supporting Your Student in the Transition



Are You Ready?



- How are **YOU** feeling about your student coming to JMU?
- What are you *excited* about?



Academics at JMU



20th Century McGee

- Perceptions of Family Leaving
- Expectations
- No classes
- No next steps
- Hopes & Dreams about the future

Advising at JMU

First-Year Advisor



Major Advisor



Advisor's Role

- Helps with academic planning and decision-making
- Address questions and concerns regarding General Education, major, and degree requirements
- Explains how students' academic decisions affect their progress towards meeting graduation requirements
- Discuss academic choices with regards to long-term academic and career goals
- Helps identify other resources on campus as needed



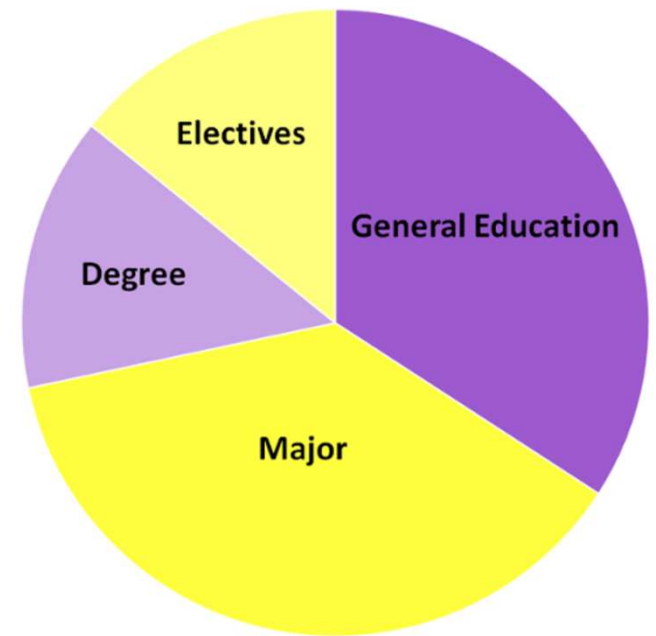
Student's Role

- Know the Academic Requirements
 - General Education, your major and degree program, and any optional academic program additions, such as a minor or pre-professional programs.
- Choose a major and explore your career options
- Know your Academic Advisor
 - Preferred method of communication (e.g., phone, email, office hours)
 - Initiate contact for advice, info., resources, and support.
- Be prepared for meetings with your advisor
- Ask your advisor questions about things you don't know, when clarification is needed, or concerns you may have



Curriculum Overview: JMU Degree Nuts & Bolts

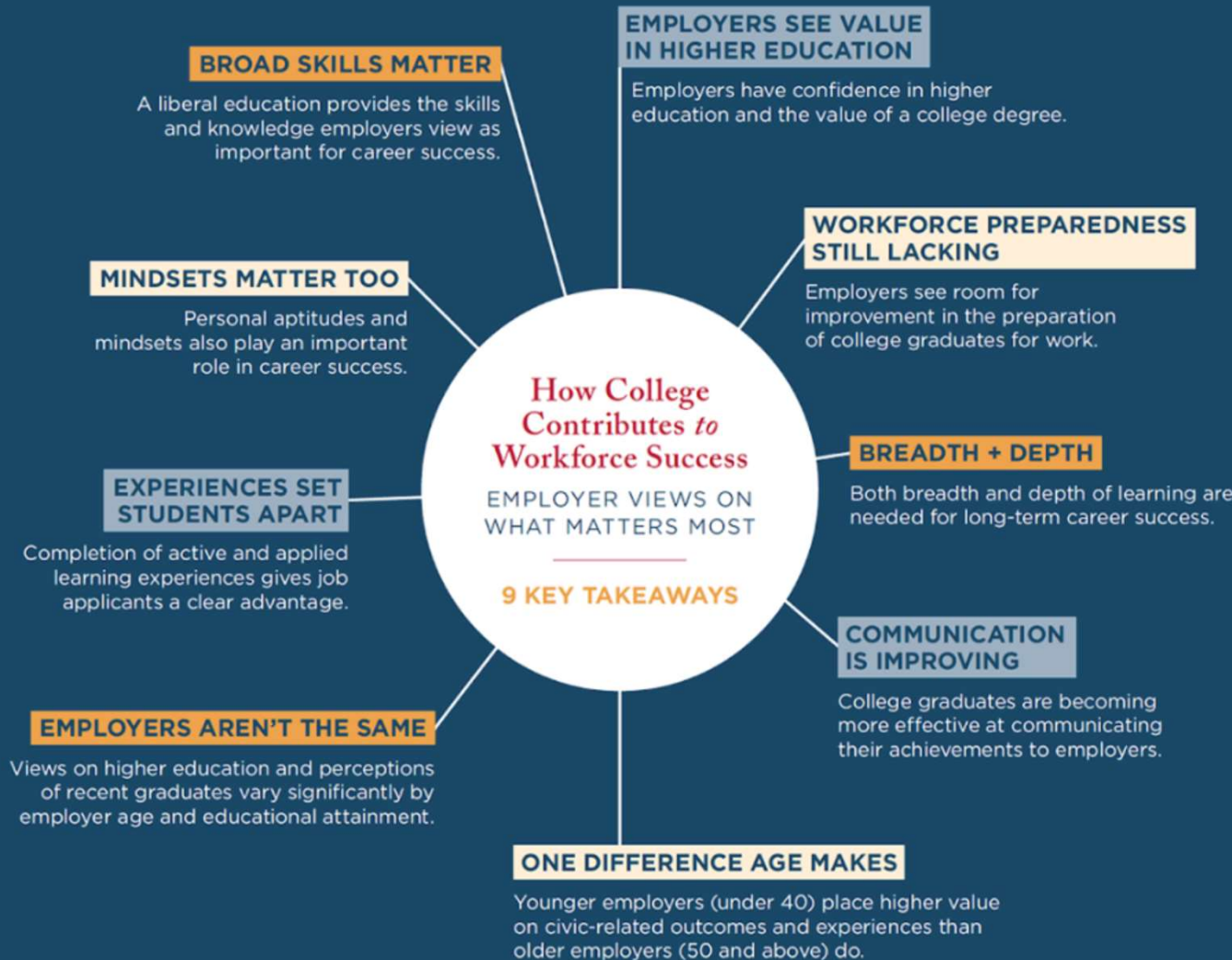
- The four areas of academic requirements
- Extracurricular activities
- Internship opportunities
- Service learning
- Student leadership
- Community engagement (local/abroad)



Navigating Gen Ed (General Education)

- 5 Areas
 - Madison Foundations
 - Arts & Humanities
 - The Natural World
 - American & Global Perspectives
 - Sociocultural and Wellness
- Central to the JMU experience
- Many unique courses





Navigating a Knowledge-Based Economy



jmu.edu/advising

Today's Advising Meetings: Focus on Student Success

- Students meet with their First-Year advisor
 - Please reinforce this message for us: At JMU, students are in the driver's seat of their education. They should reach out to their advisor when they need them!
- Content about General Education
- Major specific information
- Transitioning to JMU
- Schedule review
- Opportunities to connect with advisor and peers

Preparing Your Student to be Career Ready!



Your University Career Center team can help you with:



Resumes
& Cover Letters



Interview Prep
& Practice



Job & Internship
Search



Career Decision
Making



Graduate School
Preparation



Career
Appointments

jmu.edu/career | [@jmucareer](https://twitter.com/jmucareer)

JMU University
Career Center



5 Ways to be #CareerReady:



**Activate your Handshake account:
jmu.joinhandshake.com**



**Schedule a career advising
appointment at least once a year**



**Attend University Career Fairs
every semester**



**Connect classes to
potential career paths**



**Pursue internships, work-related
and volunteer experiences**





Complete Handshake Profile

- Go to jmu.joinhandshake.com
- Register for career fairs, events, workshops
- Schedule career advising appointments
- Sign up for interviews
- Access & apply for job/internship opportunities





Meet with a Career Advisor at least once a year

- Provides individual attention
- Career assessment opportunities
- Mock interviews
- Grad school statement review
- Resume/cover letter advice





Attend University Career Fairs every semester

Every student should

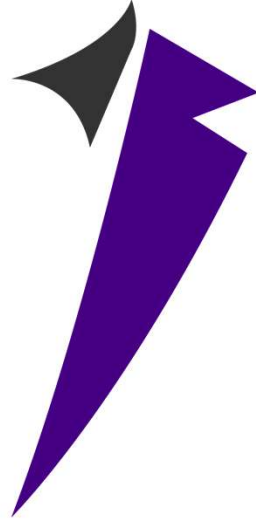
- ✓ Attend each day for 30 minutes
- ✓ Talk to 5 organizations each day

Career fairs are great ways for students to

- ✓ Practice introducing themselves
- ✓ Connect with JMU alumni
- ✓ Learn about career paths
- ✓ Find jobs & internships



University Career Fair



Tuesday 9/26
Wednesday 9/27
11am – 3pm
Festival Ballroom



Campus Partner Career Fairs



- **College of Integrated Science & Engineering (CISE) Career & Internship Fair:**
Tuesday 9/12 | 11am – 3pm | Festival Ballroom
- **Nurse Recruitment Day**
Thur. 9/14 | 11am - 3pm | AUBC
- **Hart School (Hospitality, Sport & Recreation Management) Career & Internship Fair:**
Wednesday 11/8 | 11am - 3pm | Festival Ballroom
- Other career fairs: **“Meet the Firms”** (COB students), **Teacher Recruitment Day**

jmu.edu/career





Connect Classes with Careers

- Relate majors, minors, general education and electives to career ideas
- Select paper and project topics related to jobs, industries, and/or career fields
- Include specifics of coursework in elevator pitch
- Apply course learning in internships & involvements
- Identify 3 things they are proud of





Pursue at least 1 Internship

Internships

- Provide opportunities to try out career field
- Apply learning from coursework
- Advance career competencies
- Develop a network of career contacts
- Lead to more & better opportunities
- Are often paid
- Can be counted for academic credit(s)



Bachelor's and Advanced Degree Recipients

Class of 2022 Career Outcomes Overview

96.3% of Bachelor and Advanced Degree Recipients Have a Career Outcome

Primary Activity	Bachelors	Advanced Degree	All Graduates
Working	74.1%	92.9%	76.6%
Continuing Education	21.5%	3.9%	19.2%
Military	0.5%	0.4%	0.5%
<i>Total with a Career Outcome</i>	<i>96.2%</i>	<i>97.2%</i>	<i>96.3%</i>
Still Seeking (employment or education)	3.5%	2.8%	3.4%
Not Seeking (due to life events, travel, etc.)	0.4%	0.0%	0.3%
<i>Total Without a Career Outcome</i>	<i>3.9%</i>	<i>2.8%</i>	<i>3.7%</i>

The data reflects knowledge of 3,351 bachelor's degree recipients and 509 advanced degree recipients, for a knowledge rate of 73.6%.

Bachelor's Degree Recipients

Top Employers 2022

1,610 Unique Employers

25+ Hires			10-14 Hires			5-9 Hires		
Sentara Healthcare			UVA Health			CGI Federal	ADP	TEKsystems
Carahsoft			Fannie Mae			Duke Health	Massachusetts General Hospital	U.S. Air Force
Deloitte			Marriott Bonvoy Hotels			Insight Global	Target	Virginia Hospital Center
KPMG			Oracle			PwC	ALKU	Aramark
Inova Health System			memoryBlue			Capital One	Augusta Health	CapTech Ventures, Inc.
James Madison University			Merck			Cvent	Bloomberg Industry Group	Chesterfield County Public Schools
15-25 Hires			Enterprise Holdings			Gartner, Inc.	CACI International Inc.	Fairfax County Public Schools
RSM			Leidos			MedStar Health	Guidehouse	Fidelity Investments
Amazon			Stryker			Prince William County Public Schools	HCA Healthcare	Harrisonburg City Schools
Booz Allen Hamilton			University of Virginia			U.S. Army	NTT Data	Maxim Healthcare
VCU Health								
Bon Secours								
CoStar Group								
EY, LLP								

N= 2,491 (Number of employed students who indicated their employer or organization of employment)

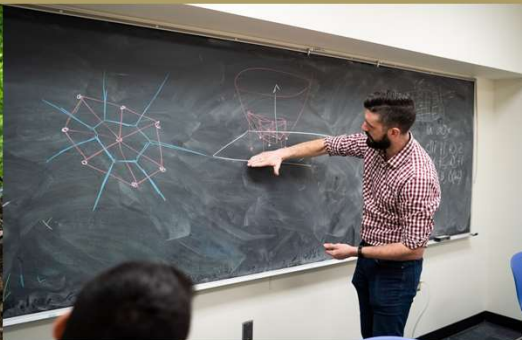


Supporting
Your Student

**Students will struggle at some point...and
that's okay!**

How they will cope with that struggle is an indicator
of their success...





The entire JMU community is mobilized to help your student achieve their goals.



Tips for Family Members

Encourage your student to:

- Check JMU email daily
- Reach out to their academic advisor if they need help
- Foster resilience

Ask students how their classes relate to their career ideas

Have students practice their elevator pitch







Start Today!

- Empower your student
- Discuss & ask questions
- Encourage independent interactions with their advisor and the career center
- Support their decisions

JMU University Advising



JMU University Career Center



University Advising

 Student Success Center 4500

 universityadvising@jmu.edu

 (540) 568-7350

 jmu.edu/advising

  @jmuadvising



University Career Center

 Student Success Center 3250

 career@jmu.edu

 (540) 568-6555

 jmu.edu/career

   @jmucareer