



PERCUSSION AUDITIONS 2022

SATURDAY, June 25
JMU Bridgeforth Stadium

- 8:30am** Registration opens @ Bridgeforth Stadium
- *Enter stadium at the E-Gates*
 - *Registration will take place below the north endzone stands*
 - *After registering, seating will take place in the north endzone*
- Note: See *maps/directions below*.**
- 9:30am** Opening remarks & Introductions – *JMU Band Staff & Leadership*
- 10:00am** **MORNING AUDITION SESSION**
- 12:00-1:00pm** Lunch for participants @ D-Hall
Meal vouchers provided for participants @ registration.
- 1:00-5:00** **AFTERNOON AUDITION SESSION**
- 5:00pm** Audition closing

PARENTS & GUESTS

All are welcome to join us for our opening meeting. However, the stadium will be closed to the public during auditions. While on campus:

- *You can purchase meal vouchers to enjoy D-Hall for lunch.*
- *See below for a list of local attractions*

ADDITIONAL AUDITION INFORMATION

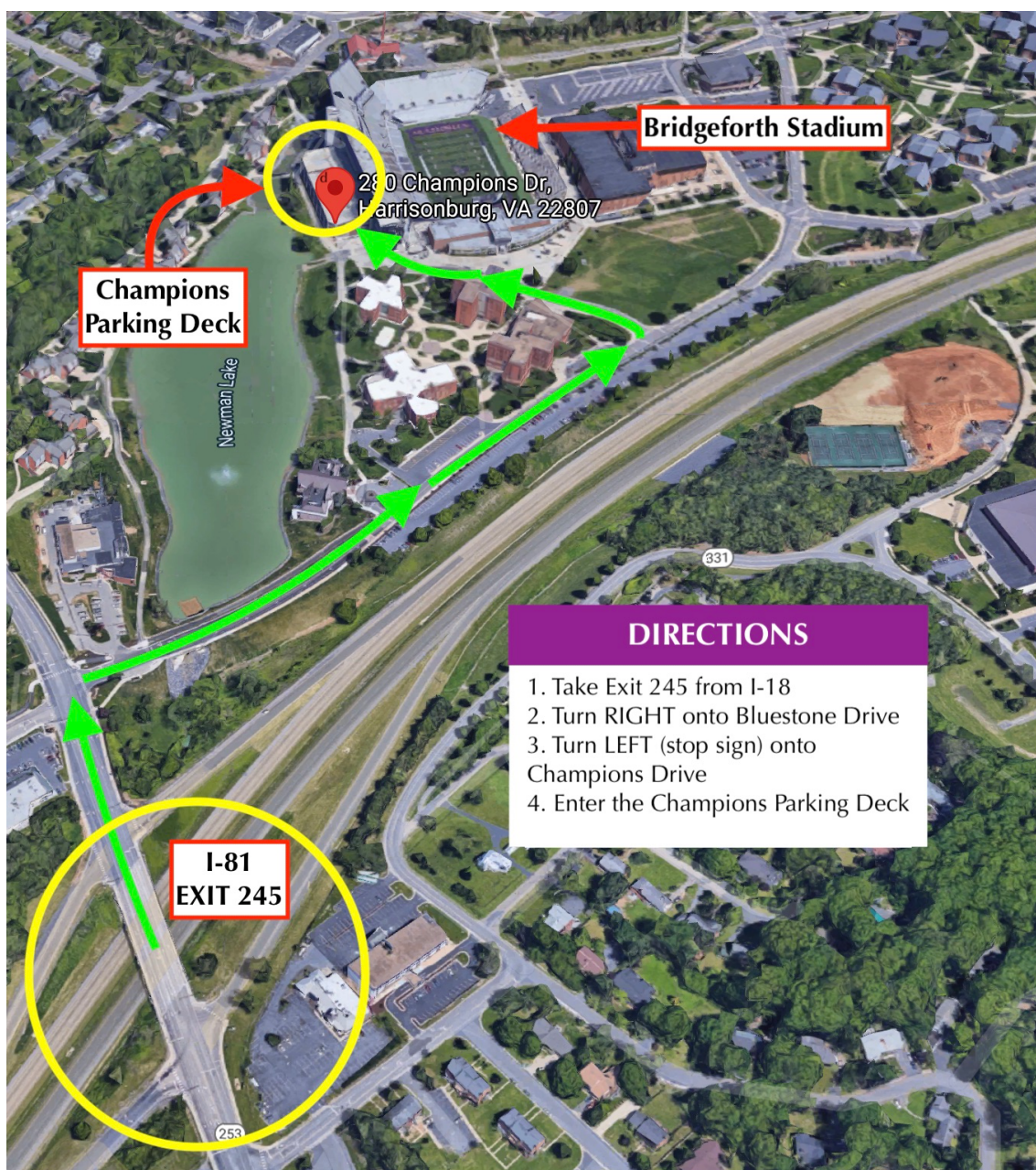
LOCATION AND PARKING

Auditions will take place at the **JMU Bridgeforth** conveniently located in the center of campus with easy access from I-81 Exit 245. **PARKING** will be available in the Champions Parking Deck (located adjacent to the stadium). For a campus map, visit www.jmu.edu/map.

Our physical address for your G.P.S. is: 280 Champions Drive, Harrisonburg, VA 22807

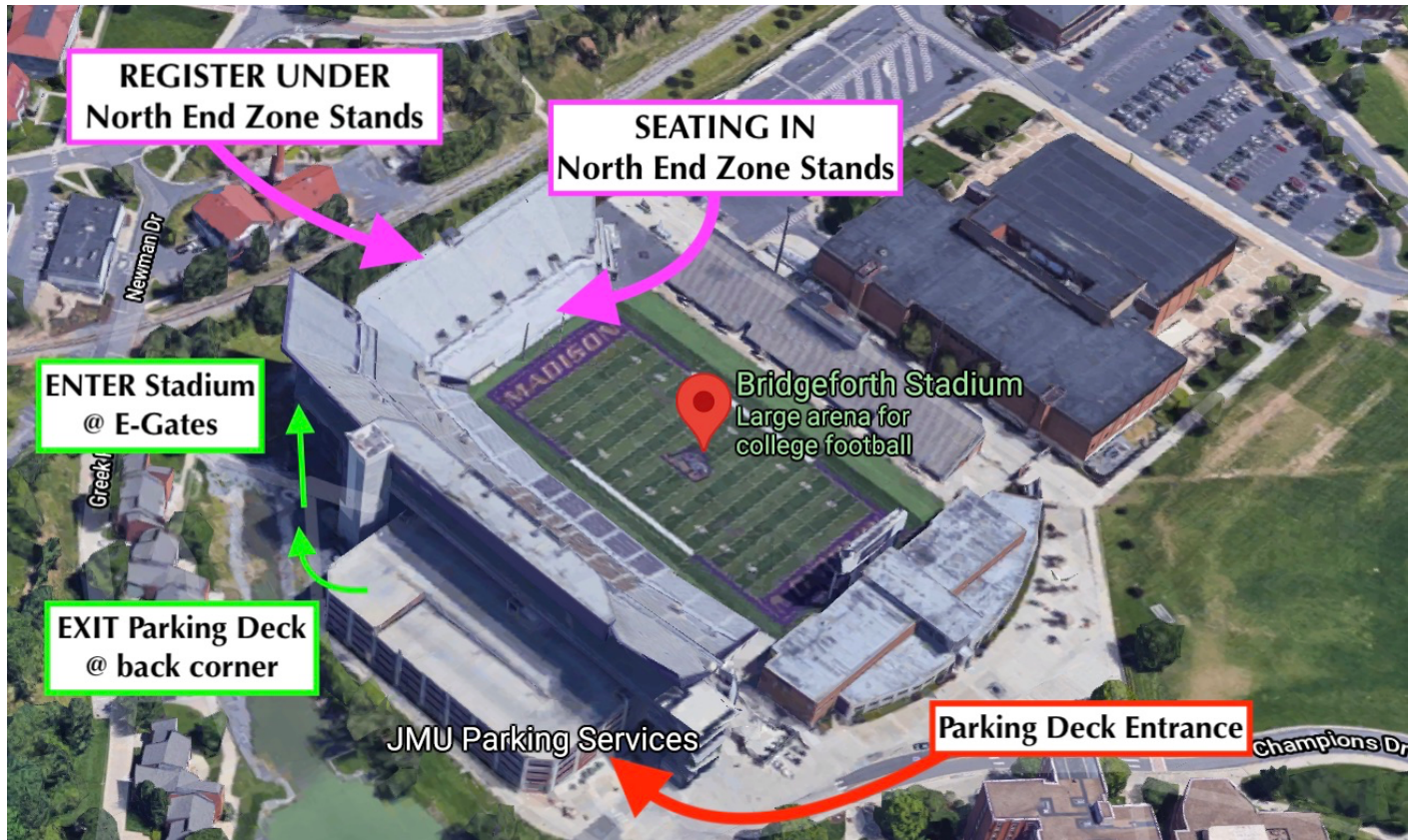
Recommended Directions:

- 1.) Enter Harrisonburg from I-81 via Exit 245 (*Port Republic*)
- 2.) Travel WEST on Port Republic Road (*remain in the RIGHT lane*)
- 3.) Turn RIGHT onto Bluestone Drive (*Campus Entrance*)
- 4.) At the first stop sign, turn LEFT onto Champions Drive – follow this into the parking deck



FROM PARKING TO REGISTRATION

- 1.) Exit the northwest corner of the parking deck (*see diagram below*)
- 2.) Follow signs around to the E-Gates/Service Gate 3
- 3.) Enter the stadium and follow signs/instructions to register under the North End Zone stands.
- 4.) After you are registered, you will move to be seated in the North End Zone stands.



WHAT TO BRING

All **percussionists** should bring their own sticks and/or mallets. Instruments will be provided.

All audition sessions will be held outside (unless there is inclement weather), please plan accordingly:

- **Comfortable clothes** (*layers*) & **Athletic shoes** (*no sandals*)
- **Rain jacket or umbrella** (*we will be walking around campus for meals*)
- **Sunscreen**
- **Water bottle/jug**
- **Face mask** (*for any indoor locations*)

REMINDER: ALL participants must complete the MRD Membership Google Form PRIOR to arriving for auditions – please visit www.jmu.edu/mrd to access this form.

PARENTS & GUESTS

Please use the links below for information about exploring Harrisonburg during your visit:

www.visitharrisonburgva.com

www.harrisonburgva.gov/attractions