



COLOR GUARD AUDITIONS 2022

SATURDAY, June 25

JMU Bridgeforth Stadium

8:30am

Registration opens @ Bridgeforth Stadium

- *Enter stadium at the E-Gates*
- *Registration will take place below the north endzone stands*
- *After registering, seating will take place in the north endzone*

Note: See maps/directions below.

9:30am

Opening remarks & Introductions – *JMU Band Staff & Leadership*

10:00am

MORNING AUDITION SESSION

12:30-1:30pm

Lunch for participants @ D-Hall

Meal vouchers provided for participants @ registration.

1:30-4:30pm

AFTERNOON AUDITION SESSION

4:30-5:30pm

Dinner for participants @ Stadium

Provided by JMU Bands @ STADIUM

5:30-8:30pm

EVENING AUDITION SESSION

PARENTS & GUESTS

All are welcome to join us for our opening meeting. However, the stadium will be closed to the public during auditions. While on campus:

- *You can purchase meal vouchers to enjoy D-Hall for lunch.*
- *See below for a list of local attractions*

ADDITIONAL AUDITION INFORMATION

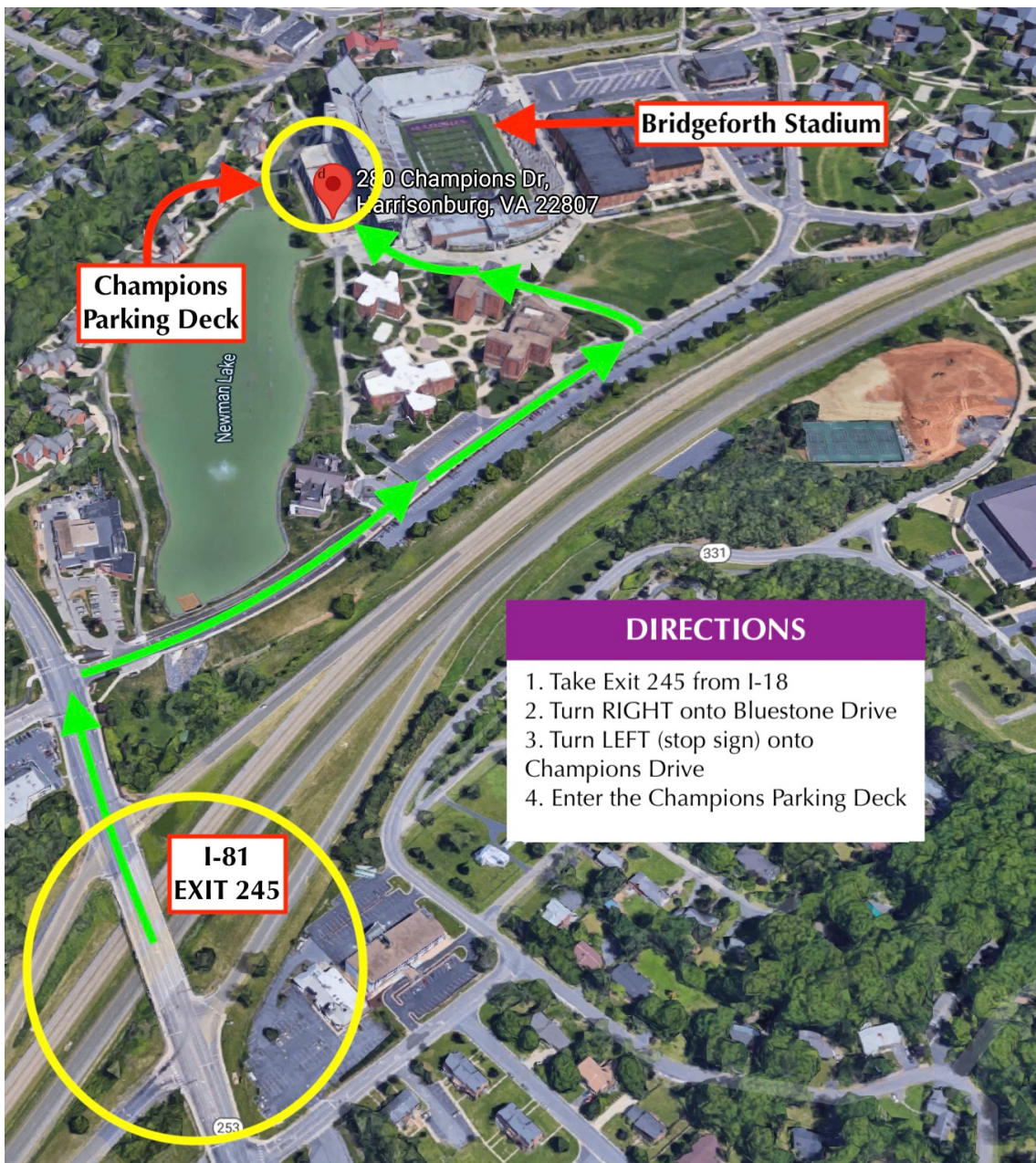
LOCATION AND PARKING

Auditions will take place at the **JMU Bridgeforth** conveniently located in the center of campus with easy access from I-81 Exit 245. **PARKING** will be available in the Champions Parking Deck (located adjacent to the stadium). For a campus map, visit www.jmu.edu/map.

Our physical address for your G.P.S. is: 280 Champions Drive, Harrisonburg, VA 22807

Recommended Directions:

- 1.) Enter Harrisonburg from I-81 via Exit 245 (*Port Republic*)
- 2.) Travel WEST on Port Republic Road (*remain in the RIGHT lane*)
- 3.) Turn RIGHT onto Bluestone Drive (*Campus Entrance*)
- 4.) At the first stop sign, turn LEFT onto Champions Drive – follow this into the parking deck



FROM PARKING TO REGISTRATION

- 1.) Exit the northwest corner of the parking deck (*see diagram below*)
- 2.) Follow signs around to the E-Gates/Service Gate 3
- 3.) Enter the stadium and follow signs/instructions to register under the North End Zone stands.
- 4.) After you are registered, you will move to be seated in the North End Zone stands.



WHAT TO BRING

ALL participants should wear appropriate clothes for learning routines (work-out/dance clothes and running shoes/dance shoes – no jeans or sandals).

Flags will be provided (all participants will audition using the same equipment). ***If individuals would like to be considered for the weapon line (in addition to the flag line), they must provide their own rifle and/or sabre.***

Please note that all audition sessions will be held outside (unless there is inclement weather), so please plan accordingly:

- **Comfortable clothes** (*layers*) & **Athletic shoes** (*no sandals*)
- **Rain jacket or umbrella** (*we will be walking around campus for meals*)
- **Sunscreen**
- **Water bottle/jug**
- **Face mask** (*for any indoor locations*)

REMINDER: ALL participants must complete the MRD Membership Google Form PRIOR to arriving for auditions – please visit www.jmu.edu/mrd to access this form.

PARENTS & GUESTS

Please use the links below for information about exploring Harrisonburg during your visit:

<https://www.visitharrisonburgva.com>

www.harrisonburgva.gov/attractions

SPECIFIC QUESTIONS?

If you have specific questions about the audition processes, please feel free to contact:

Carly Philp – carly.philp@gmail.com - *Guard*

Questions about the event times, locations, etc. can be addressed by contacting the **JMU Band Office** at (540) 568-6656.