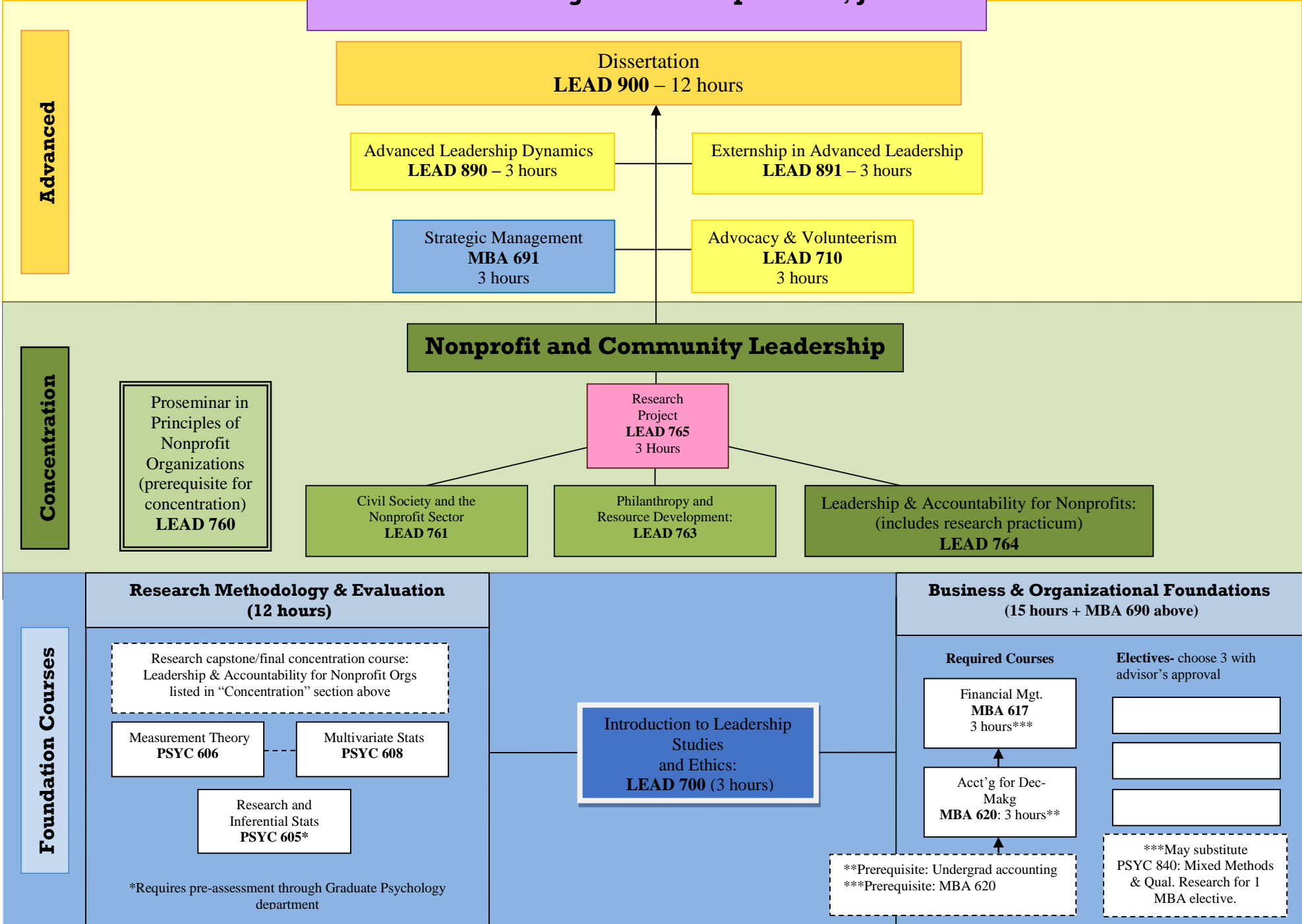


**Ph.D. Curriculum in Strategic Leadership
School of Strategic Leadership Studies, JMU**



Nonprofit and Community Leadership Core Course Descriptions

| Course | Description | Prerequisites | Generally Offered |
|---|--|---|-------------------|
| LEAD 760: Proseminar in Principles of Nonprofit Organizations | The first course in the concentration is designed to enhance students' understanding of how third-sector organizations differ in economic, legal, and political terms from government and for-profit organizations. The course fosters understanding of the theoretical, organizational and practice space occupied by various types of nonprofit organizations within the sector as well as their purposes, and the current status of service provision. | LEAD 700 | Spring |
| LEAD 761: Civil Society and the Nonprofit Sector | This doctoral survey course explores the synergy between civil society and the nonprofit sector by tracing the theoretical and historical perspectives of each. The role of cultural and political context in the development of civil society and the nonprofit sector are presented from a leadership perspective through emphasis on voluntary associations and their potential role in fostering social transformations across national and transnational boundaries. | LEAD 760 | Fall |
| LEAD 763: Philanthropy and Resource Development | A doctoral seminar exploring the historical, economic, political, social, and psychological foundations of philanthropy in American society as well as the ethical, legal, and financial aspects of organizational resource development. The role of leadership strategies for acquisition, maintenance, and stewardship of resources including various organizational stakeholders is emphasized. The course includes perspectives from theory, empirical research, and practice. | LEAD 760 | Spring |
| LEAD 764: Leadership and Accountability for Nonprofits (research practicum) | This course presents methods of accountability, impact assessment and evaluation in nonprofit organizations in light of myriad stakeholders. The role of leadership in determining and implementing processes of internal and external evaluations is explored. | PSYC 606 LEAD 760 LEAD 761 LEAD 762 LEAD 763 | Fall |
| LEAD 765: Research Project | This course focuses on research design and planning for nonprofit leadership focused research projects. Students will develop a defensible research topic, research plan, data collection, selection of methodology, and implications. | LEAD 764 PSYC 606 PSYC 608 | Spring |