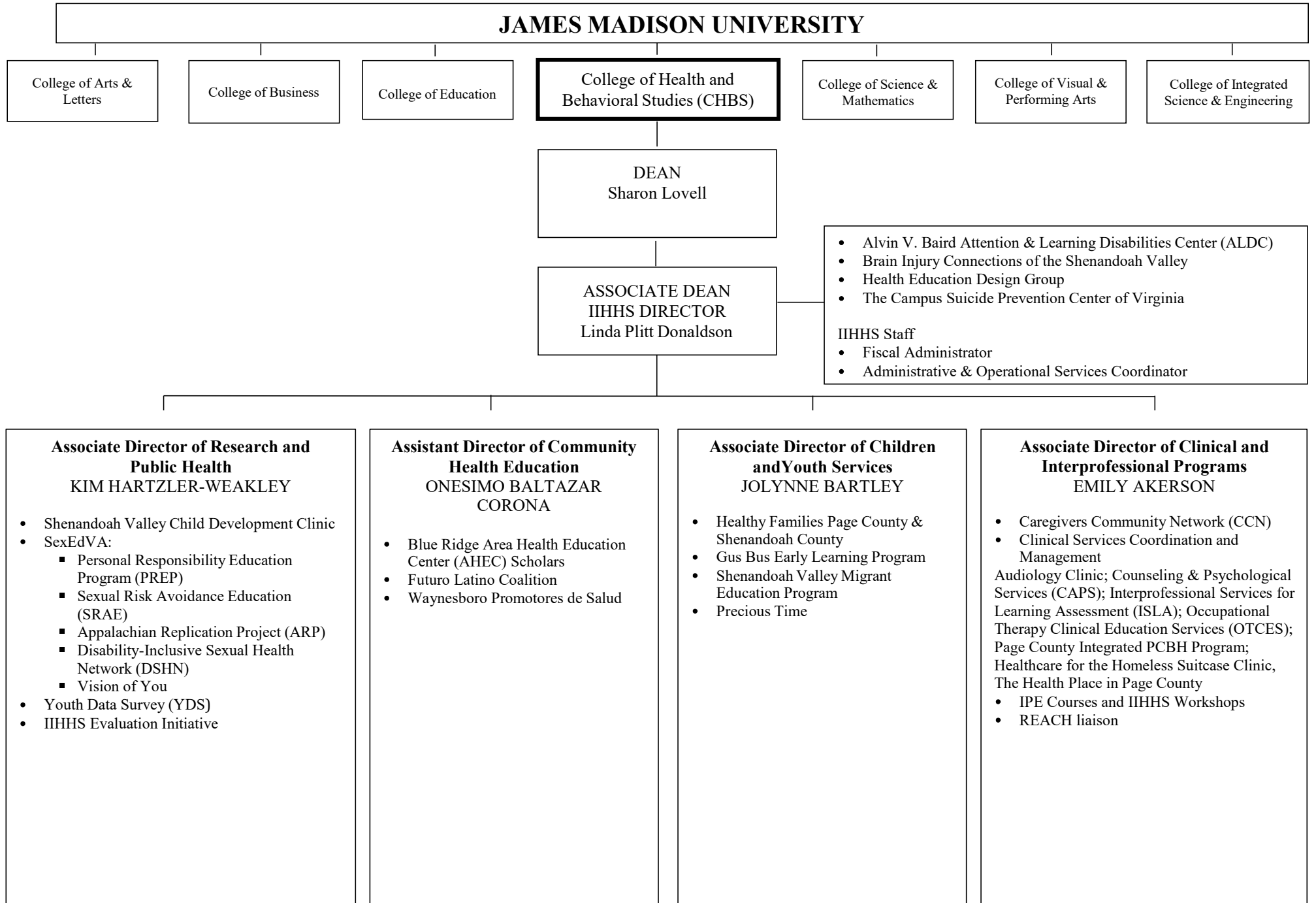


INSTITUTE FOR INNOVATION IN HEALTH AND HUMAN SERVICES (IIHHS)
Organizational Chart



JAMES MADISON UNIVERSITY

College of Arts & Letters

College of Business

College of Education

College of Health and Behavioral Studies (CHBS)

College of Science & Mathematics

College of Visual & Performing Arts

College of Integrated Science & Engineering

DEAN
Sharon Lovell

ASSOCIATE DEAN
IIHHS DIRECTOR
Linda Plitt Donaldson

- Alvin V. Baird Attention & Learning Disabilities Center (ALDC)
- Brain Injury Connections of the Shenandoah Valley
- Health Education Design Group
- The Campus Suicide Prevention Center of Virginia

- IIHHS Staff
- Fiscal Administrator
 - Administrative & Operational Services Coordinator

Associate Director of Research and Public Health
KIM HARTZLER-WEAKLEY

- Shenandoah Valley Child Development Clinic
- SexEdVA:
 - Personal Responsibility Education Program (PREP)
 - Sexual Risk Avoidance Education (SRAE)
 - Appalachian Replication Project (ARP)
 - Disability-Inclusive Sexual Health Network (DSHN)
 - Vision of You
- Youth Data Survey (YDS)
- IIHHS Evaluation Initiative

Assistant Director of Community Health Education
ONESIMO BALTAZAR CORONA

- Blue Ridge Area Health Education Center (AHEC) Scholars
- Futuro Latino Coalition
- Waynesboro Promotores de Salud

Associate Director of Children and Youth Services
JOLYNNE BARTLEY

- Healthy Families Page County & Shenandoah County
- Gus Bus Early Learning Program
- Shenandoah Valley Migrant Education Program
- Precious Time

Associate Director of Clinical and Interprofessional Programs
EMILY AKERSON

- Caregivers Community Network (CCN)
 - Clinical Services Coordination and Management
- Audiology Clinic; Counseling & Psychological Services (CAPS); Interprofessional Services for Learning Assessment (ISLA); Occupational Therapy Clinical Education Services (OTCES); Page County Integrated PCBH Program; Healthcare for the Homeless Suitcase Clinic, The Health Place in Page County
- IPE Courses and IIHHS Workshops
 - REACH liaison