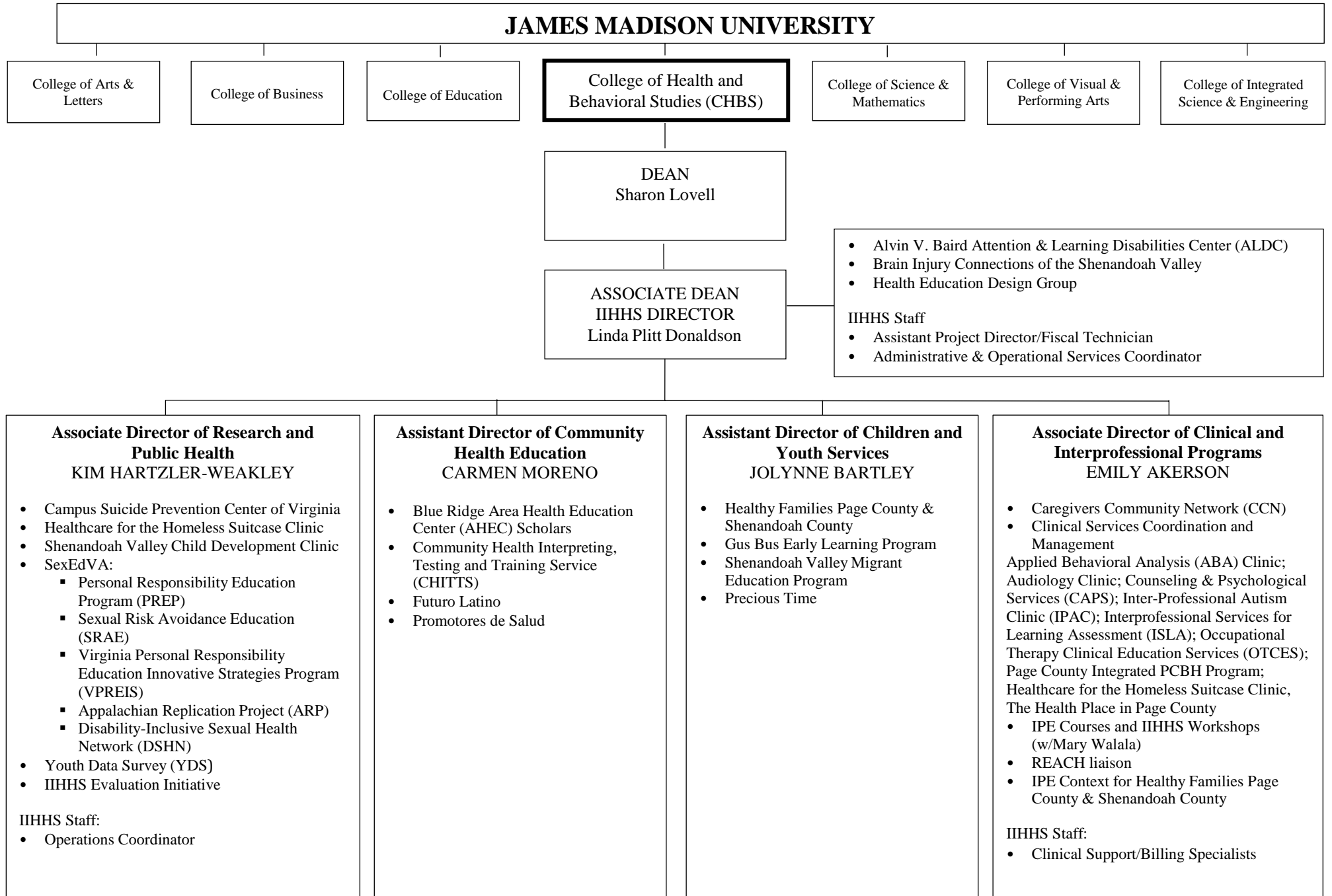


INSTITUTE FOR INNOVATION IN HEALTH AND HUMAN SERVICES (IIHHS)
Organizational Chart



JAMES MADISON UNIVERSITY

College of Arts & Letters

College of Business

College of Education

College of Health and Behavioral Studies (CHBS)

College of Science & Mathematics

College of Visual & Performing Arts

College of Integrated Science & Engineering

DEAN
Sharon Lovell

ASSOCIATE DEAN
IIHHS DIRECTOR
Linda Plitt Donaldson

- Alvin V. Baird Attention & Learning Disabilities Center (ALDC)
- Brain Injury Connections of the Shenandoah Valley
- Health Education Design Group

- IIHHS Staff
- Assistant Project Director/Fiscal Technician
 - Administrative & Operational Services Coordinator

Associate Director of Research and Public Health
KIM HARTZLER-WEAKLEY

- Campus Suicide Prevention Center of Virginia
- Healthcare for the Homeless Suitcase Clinic
- Shenandoah Valley Child Development Clinic
- SexEdVA:
 - Personal Responsibility Education Program (PREP)
 - Sexual Risk Avoidance Education (SRAE)
 - Virginia Personal Responsibility Education Innovative Strategies Program (VPREIS)
 - Appalachian Replication Project (ARP)
 - Disability-Inclusive Sexual Health Network (DSHN)
- Youth Data Survey (YDS)
- IIHHS Evaluation Initiative

- IIHHS Staff:
- Operations Coordinator

Assistant Director of Community Health Education
CARMEN MORENO

- Blue Ridge Area Health Education Center (AHEC) Scholars
- Community Health Interpreting, Testing and Training Service (CHITTS)
- Futuro Latino
- Promotores de Salud

Assistant Director of Children and Youth Services
JOLYNNE BARTLEY

- Healthy Families Page County & Shenandoah County
- Gus Bus Early Learning Program
- Shenandoah Valley Migrant Education Program
- Precious Time

Associate Director of Clinical and Interprofessional Programs
EMILY AKERSON

- Caregivers Community Network (CCN)
- Clinical Services Coordination and Management
- Applied Behavioral Analysis (ABA) Clinic; Audiology Clinic; Counseling & Psychological Services (CAPS); Inter-Professional Autism Clinic (IPAC); Interprofessional Services for Learning Assessment (ISLA); Occupational Therapy Clinical Education Services (OTCES); Page County Integrated PCBH Program; Healthcare for the Homeless Suitcase Clinic, The Health Place in Page County
- IPE Courses and IIHHS Workshops (w/Mary Walala)
- REACH liaison
- IPE Context for Healthy Families Page County & Shenandoah County

- IIHHS Staff:
- Clinical Support/Billing Specialists