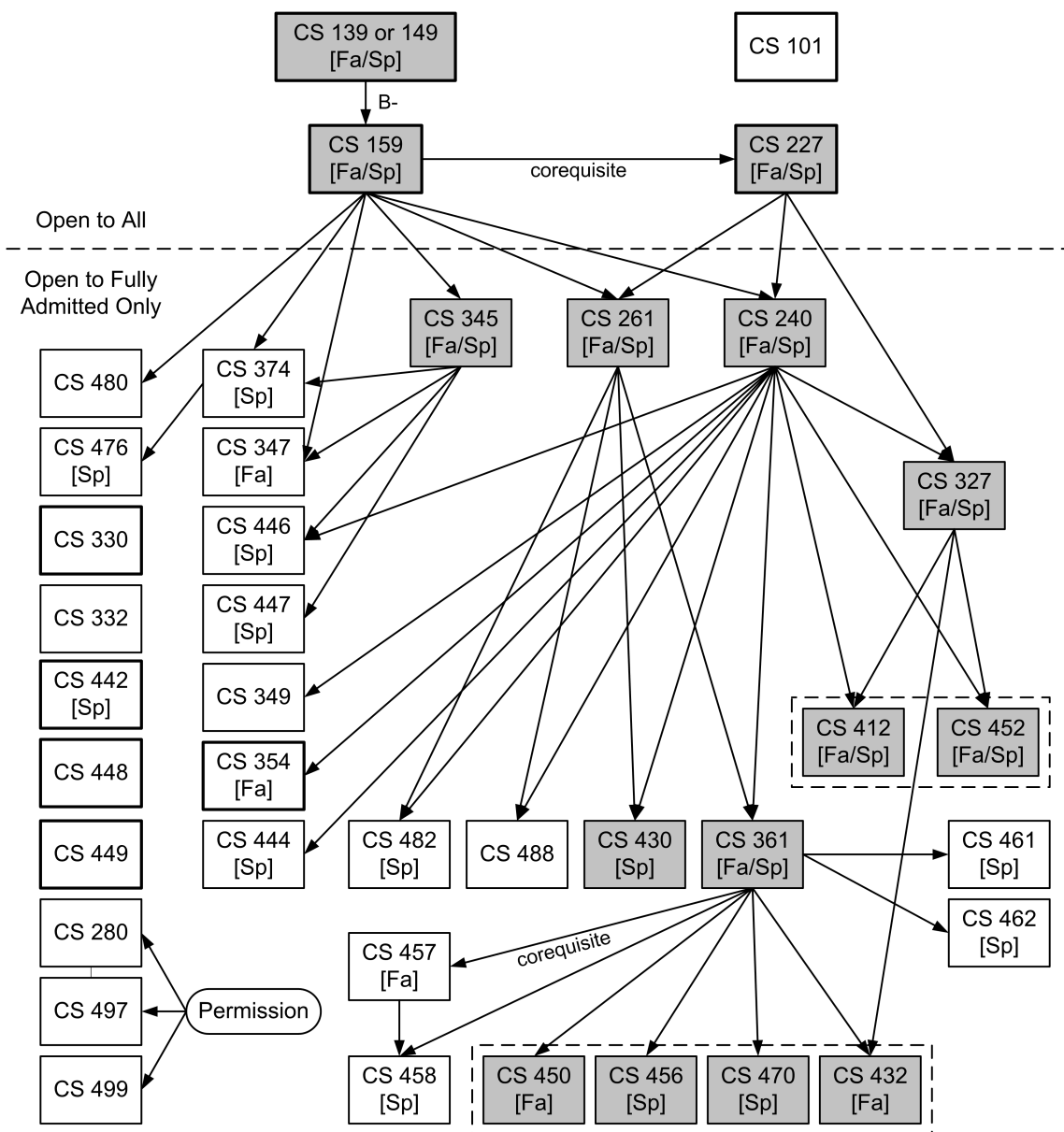


CS Course Prerequisites



Single-headed Arrows indicate prerequisites and corequisites. All non-cross-listed courses require a minimum grade (C- except where noted above) in all prerequisite courses. Shaded courses are required, but students need choose only one of the courses enclosed in dashed rectangles. Courses with a thin border require full admission to the CS major or minor while courses with a thick border do not. The semester a course is normally offered is indicated as Fa (fall) or Sp (spring).

Courses with alternative prerequisites from other departments:
 CS 240, CS 327: MATH 227 or MATH 345

Courses with prerequisites from other departments:
 CS 149: MATH 155, MATH 156, or a sufficient score on the math placement test
 CS/MATH 227: MATH 155, MATH 156, or a sufficient score on the math placement test
 CS 240: MATH 231
 CS/MATH 448, CS/MATH 449: MATH 237, MATH 238, MATH 248