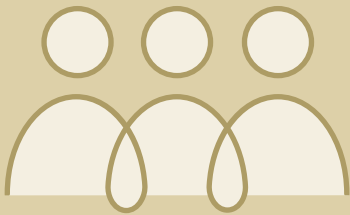


The Department of Psychology at James Madison University is **HIRING!**

Two tenure-track positions in Clinical, Counseling, or Community Psychology

We invite applicants for two tenure-track positions at the rank of Assistant Professor, to begin August 2024. JMU is an R2 university, with an enrollment of approximately 20,000 undergraduate and 1,900 graduate students. Including these two positions, the department anticipates hiring a cluster of four new faculty members this year.

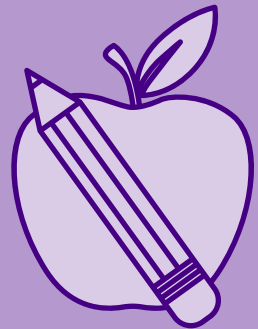


Inclusive Excellence

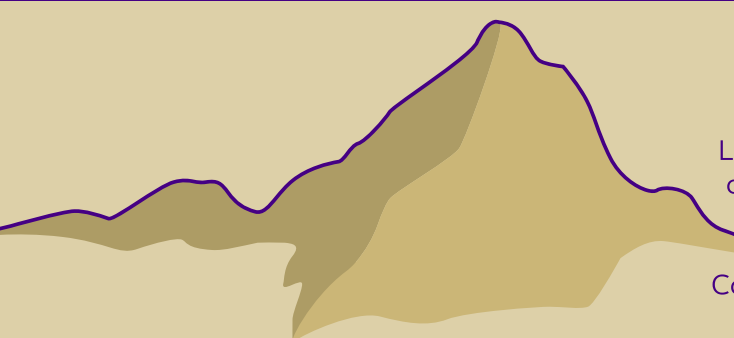
Our department has an enhanced focus on diversity within our psychology curriculum and is committed to creating an inclusive environment for faculty, staff, and students. Strong candidates will demonstrate the incorporation of perspectives relating to diversity, equity, inclusion, justice, and accessibility into their teaching, scholarship, service activities, and/or as illustrated in their professional expertise.

Teaching Opportunities

Successful candidates will contribute to our Field Placement program, a competitive and vibrant experience that our students apply for in the semester prior to their placement. Typical loads will also include sociocultural courses and/or courses within their specialty (e.g., clinical, abnormal, counseling, or community psychology).



Life in the Shenandoah Valley



Located in the heart of Virginia's beautiful Shenandoah Valley, the city of Harrisonburg is approximately 120 miles from Washington, D.C. and Richmond, VA. With a population of just over 53,000, Harrisonburg is one of the most diverse communities in the Commonwealth of Virginia. ProPublica lists Harrisonburg as one of the safest areas from climate change risks in the US.

Visit chbs.jmu.edu/join-our-faculty to learn more about our college and joblink.jmu.edu/postings/15744 to apply!

