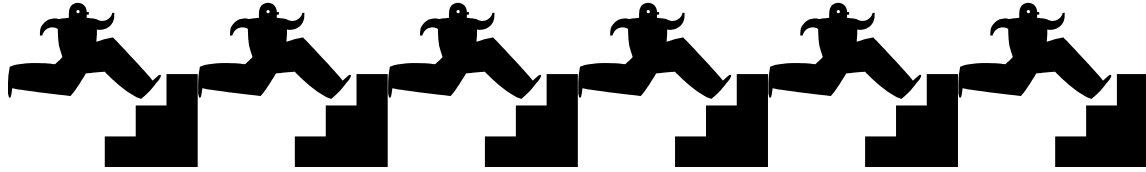


# MOVIN' ON UP JUNE 25, 2010 JAMES MADISON UNIVERSITY



## WHO:

- College-bound students with disAbilities who will be in 8<sup>th</sup> or 9<sup>th</sup> grade during the 2010-2011 school year

## WHAT:

- Spend the day at James Madison University learning about college life from successful college students with disAbilities
- Learn self-advocacy skills you will need to be successful in high school and college
- Participate in disAbility awareness activities
- Participate in a college class taught by a JMU professor
- Explore campus and eat free at the famous JMU dining hall
- Ask questions to a panel of successful high school and college students with disAbilities

## WHERE:

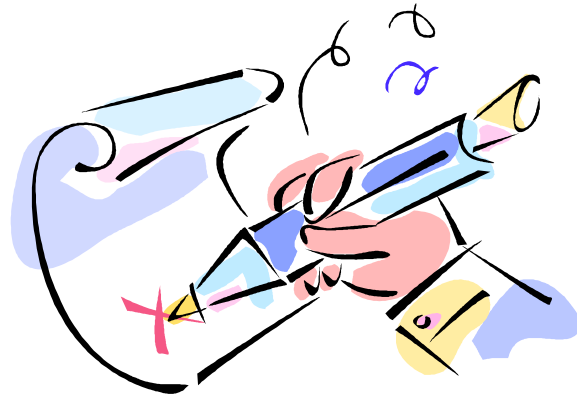
- Showker Hall, James Madison University, Harrisonburg, VA

## WHEN:

- Friday June 25, 2010 from 9:30 a.m. to 3:00 p.m. (check in 9:00 – 9:30 a.m.)
- Registration fee is \$10.00. It will be returned to you at check in.
- Continental breakfast will be available to students and parents; Lunch is provided for students only.

Logistics: Parents are welcome to attend the parent information session from 9:30 – 10:30 a.m. and then return for the High School and College Panel from 2:00 to 3:00 p.m. Students are encouraged to wear comfortable clothing as there will be a lot of walking. This event is geared toward students with disAbilities who plan to attend a four year university upon high school graduation. The \$10.00 registration fee will be returned to you when you check in.

Questions: Sally Chappel at [chappesl@jmu.edu](mailto:chappesl@jmu.edu) or 540.568.8095



---

**SIGN UP NOW!**  
**Movin' On UP**

**Registration Deadline: June 11, 2010**

Return registration form and \$10.00 fee to Susan Bowman,  
Region 5 T/TAC, MSC 9002, JMU  
Harrisonburg, VA 22807

Fax: 540.568.6726 Phone: 540.568.8843  
Email: [bowmansp@jmu.edu](mailto:bowmansp@jmu.edu)

***Make checks payable to JMU***

Name: \_\_\_\_\_ Grade in fall 2010: \_\_\_\_ School Division: \_\_\_\_\_

Mailing Address: \_\_\_\_\_  
Street or PO Box

\_\_\_\_\_

City

\_\_\_\_\_

State

\_\_\_\_\_

Zip Code

Phone: \_\_\_\_\_ E-mail: \_\_\_\_\_

Special Accommodations: \_\_\_\_\_

**\*\*Space is limited. No walk-ins, past participants, or on-site registration.  
Registration confirmation, student preparation activity, and directions will be  
sent prior to the event.**