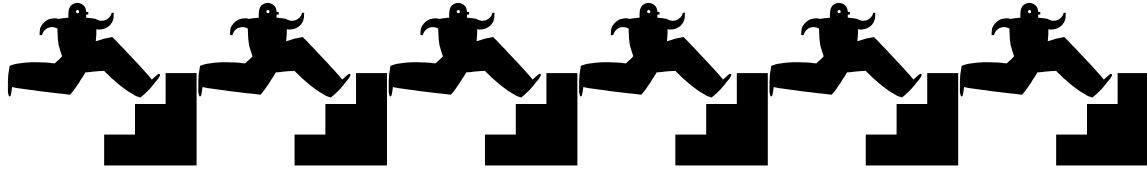


MOVIN' ON UP

JUNE 17, 2011

JAMES MADISON UNIVERSITY



WHO:

- College-bound students with disAbilities in Virginia public schools who will be in 8th or 9th grade during the 2011-2012 school year

WHAT:

- Spend the day at James Madison University learning about high school and college life from successful high school and college students with disAbilities
- Learn self-advocacy skills you will need to be successful in high school and college
- Participate in disAbility awareness activities
- Participate in a college class taught by a JMU professor
- Explore campus and eat free at the famous JMU dining hall
- Ask questions to a panel of successful high school and college students with disAbilities

WHERE:

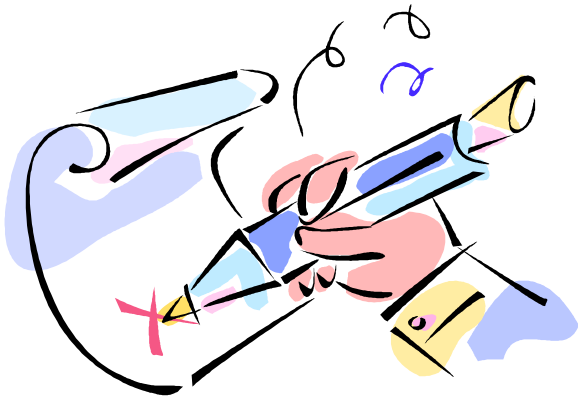
- Showker Hall, James Madison University, Harrisonburg, VA

WHEN:

- Friday June 17, 2011 from 9:30 a.m. to 3:00 p.m. (check in 9:00 – 9:30 a.m.)
- Registration fee is \$10.00. It will be returned to you at check in.
- Continental breakfast will be available to students and parents; Lunch is provided for students only.

Logistics: Parents are welcome to attend the parent information session at 9:30 a.m. followed by a tour of campus, and culminating with the High School and College Panel from 2:00 to 3:00 p.m. Students are encouraged to wear comfortable clothing as there will be a lot of walking. This event is geared toward students with disAbilities who plan to attend a four year university upon high school graduation. The \$10.00 registration fee will be returned to you when you check in.

Questions: Sally Chappel at chappesl@jmu.edu or 540.568.8095



SIGN UP NOW! **Movin' On UP**

Registration Deadline: June 1, 2011

Return registration form and \$10.00 fee to Susan Bowman,
Region 5 T/TAC, MSC 9002, JMU
Harrisonburg, VA 22807

Fax: 540.568.6726 Phone: 540.568.8843
E-mail: bowmansp@jmu.edu

Make checks payable to JMU

Student Name: _____ Grade in fall 2011: _____

School: _____ School Division: _____

Names of Persons accompanying Student: _____

Mailing Address: _____
Street or PO Box

City

State

Zip Code

Phone: (____) _____ E-mail: _____

Special Accommodations (requests needed by May 25, 2011): _____

****Space is limited. No walk-ins, past participants, or on-site registration. Registration confirmation, student preparation activity, and directions will be sent prior to the event. If you do not receive this confirmation by June 10th please contact Susan Bowman.**