

Slips, Trips and Falls

JMU Risk Management

Slip, Trip and Fall Hazard

PROBLEM:

Slip: if it is wet outside and the mat is folded back, then the floor is getting wet instead of the mat absorbing the water.

Trip: the mat is folded back and someone could catch their foot on the mat and trip.

Fall: both a wet floor and caught foot could contribute to a fall.



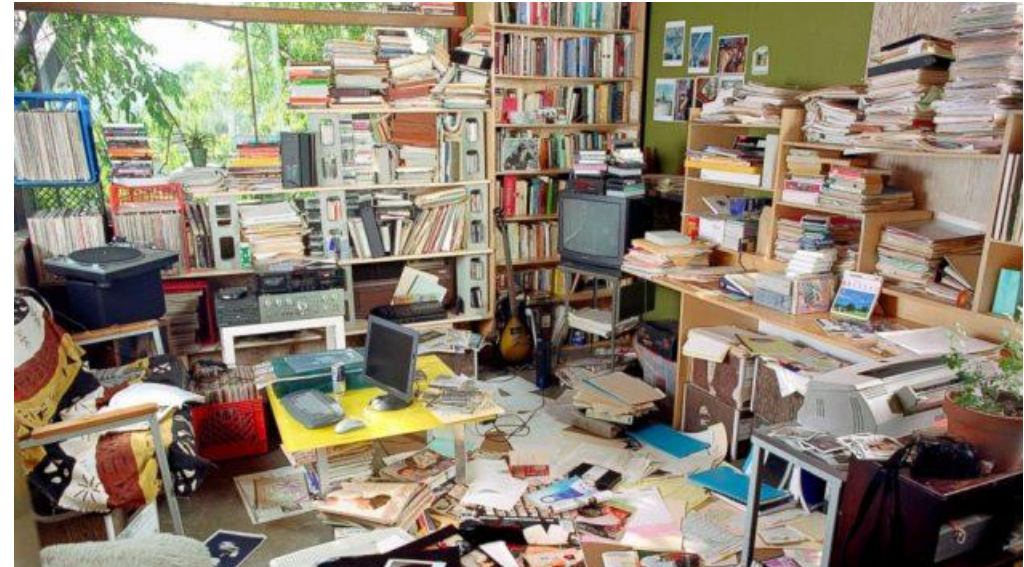
CORRECT this HAZARD!

Factors Increasing the Risk

Not Paying Attention



Clutter



Look familiar???

Take Control of Your Environment

To further reduce the risk of falls, you should ensure that:

- Aisles are clear
- Floors are clean
- Signs are present to warn of slippery areas
- Wear shoes with good support and slip resistant soles
- Cabinets and drawers are closed
- Lights are functioning
- Never stand on a chair or table – Use a ladder
- PAY ATTENTION!

How many hazards do you see?

