

National Recreation Facilities Institute

Hollywood, Florida

October 2012

University Park

Bob Golson, Associate Director, JMU UREC

John Jennings, VHB

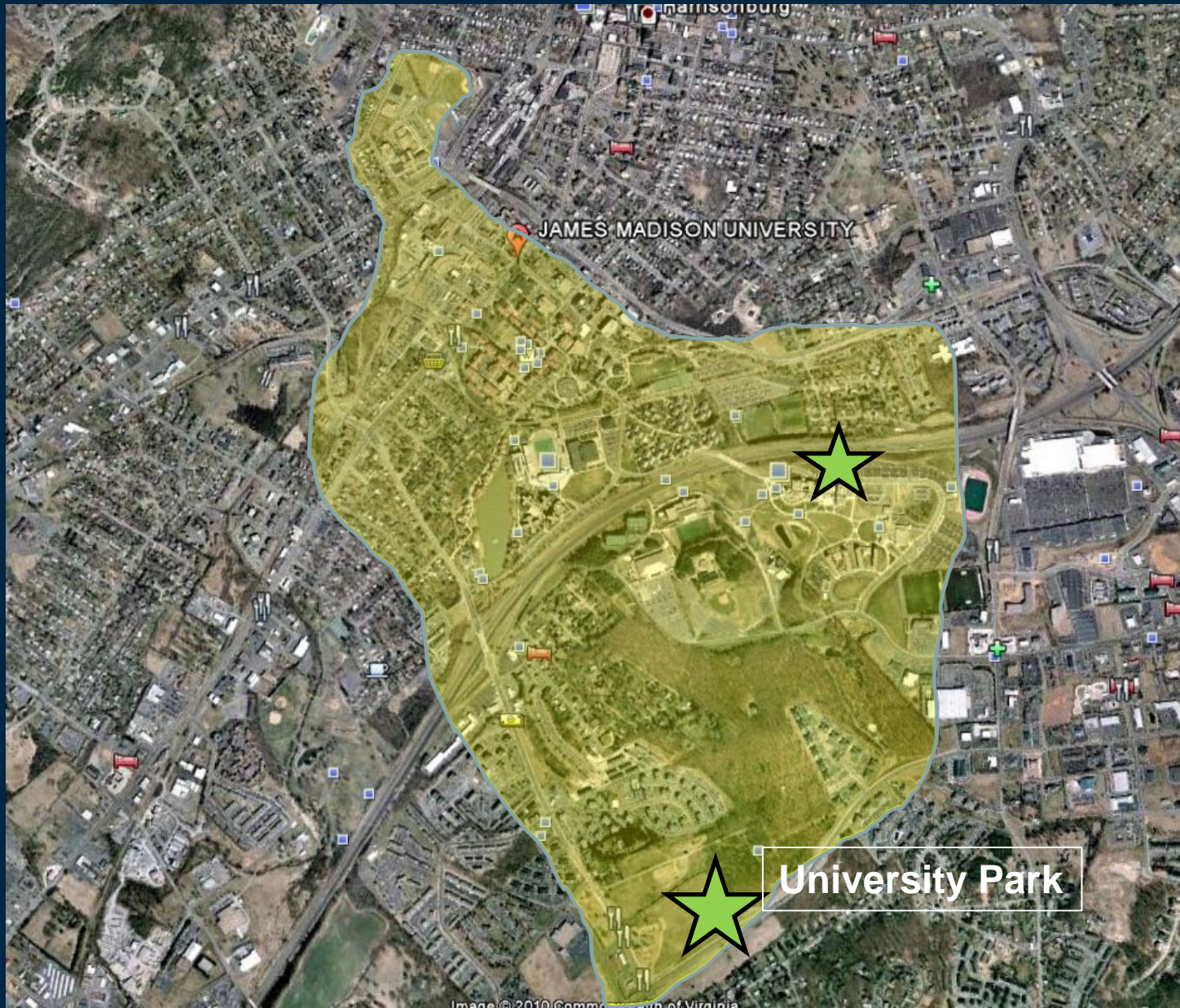
Presentation Outcomes

- Identify the benefits of collaboration when bringing an outdoor complex to the students of James Madison University.
- Identify the LEED points gained in order to get an outdoor complex certified as Silver level.
- Identify how James Madison University overcame a very challenging site to provide for the maximum programming for both Recreation and Athletics.

About...James Madison University

- Founded in 1908 (as the State Normal and Industrial School for Women)
- Liberal Arts University, Female/Male Student Ratio – 3:1
- Size: 20,023 students & 700 acres
- Location: Harrisonburg VA (Shenandoah Valley on I-81)
- #28 of The Kiplinger 100 Best Universities
- Top Public, Master's Level University in the South (USN&WR)
- 2004 FCS National Champions

JMU...The Campus



The Site



Planning Phase

The Sports Program

Athletics:

- Field Hockey Complex
- Soccer/Lacrosse Practice Field (2)
- Track & Field/ Soccer Complex
- Throwing Events Field
- Perimeter Jogging Trail

University Recreation:

- Tennis Courts (4)
- Basketball Courts (2)
- Archery Field, Rugby Field (2)
- Ropes Course (by JMU)
- Disc Golf Course (by JMU)
- Multi-Purpose Field (Club & Intramural Soccer/Flag Football/Softball)

One of 30 over iterations



Planning Phase

Accommodation of Fields -

Additional Supporting Program

- Streetscape/Access/Parking
- Gate Houses
- Pavilions
- Concessions (shared)
- Future Athletic Admin. Building
- Maintenance Area
- Viewing Experience (Stands and Informal)
- Preservation of Monument Park
- Program and Event Control
- Accessibility

VHB conclusion: "Too much program for 82-acres."

JMU directive: "No program reduction. Make it fit."

The Plan – Place Making: refining relationships



Leveling the Playing Field: The Site



"Design Challenges"

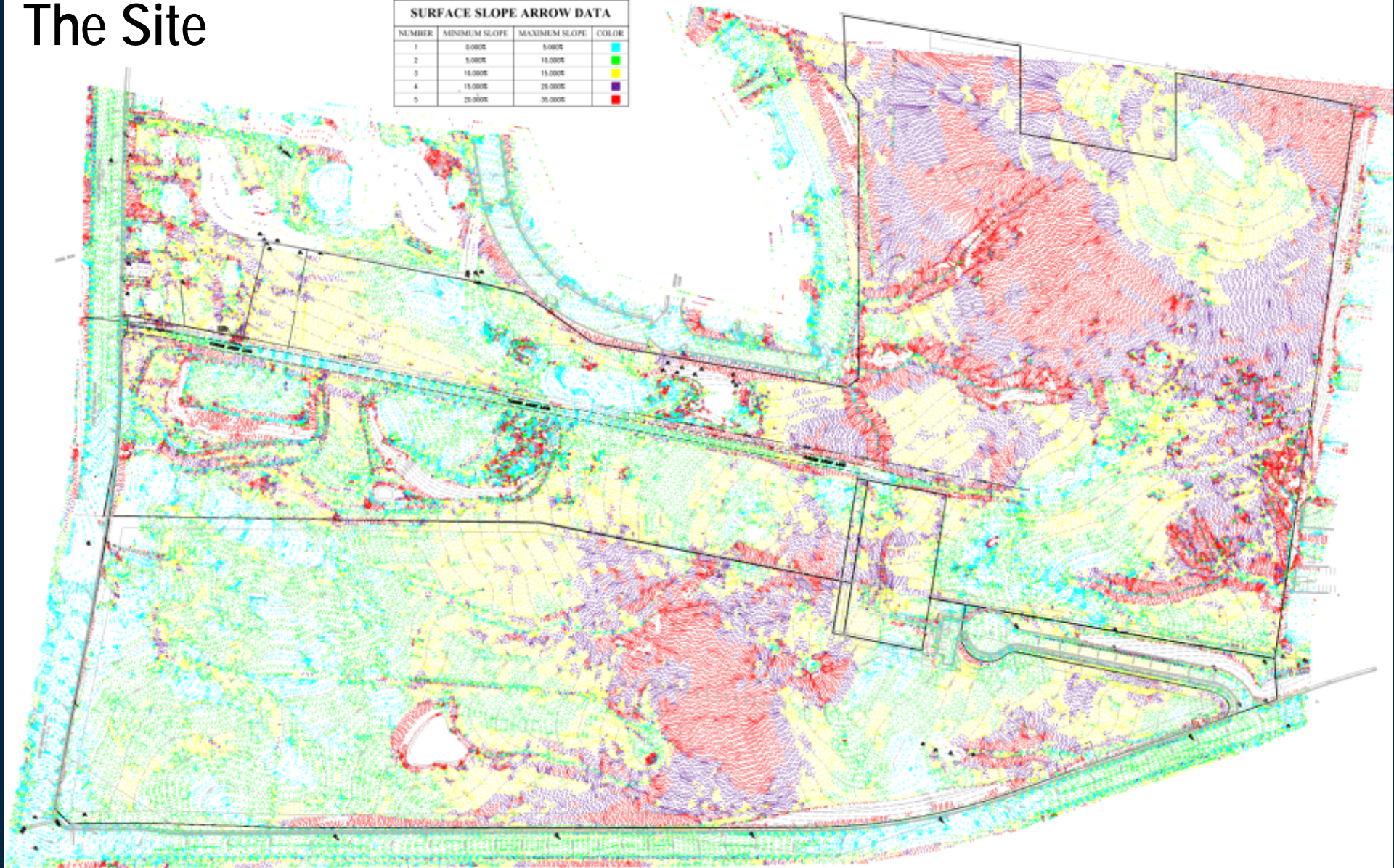
- Program Requirements – separate programs (no crossover), differing functional requirements
- Lay of the Land – program forced use of a lot of retaining walls (over 100,000 sf exposed walls)
- Turner Ashby Monument - southerners are sensitive to their Confederate Monuments, Daughters of the Confederacy
- Spitzer Property
- Future Road Improvements - widening of Port Republic Road and Neff Avenue
- Harrisonburg Electric Company

The Site



The Site

SURFACE SLOPE ARROW DATA			
NUMBER	MINIMUM SLOPE	MAXIMUM SLOPE	COLOR
1	0.000%	5.000%	Light Blue
2	5.000%	10.000%	Light Green
3	10.000%	15.000%	Yellow
4	15.000%	20.000%	Purple
5	20.000%	30.000%	Red



"Design Challenges"

Massive Earthwork Operation

- 3 Phases of Grading/Erosion and Sediment Control
- Nothing moves forward without managing stormwater through all phases of construction

Utilities – providing adequate utility corridors with tight program elements; Where do we put the trees?

Permitting Hurdles

- Department of Conservation and Recreation(DCR)
- City of Harrisonburg – Water, Sewer and Access
- Bureau of Capital Outlay Management (BCOM)

Grading and Drainage



Stormwater Management



Utilities

Water

Sewer

Electrical

Irrigation



Sports Turf



Architecture



Architecture



CONSTRUCTION SEQUENCE TO DATE

May 2010



JAMES MADISON UNIVERSITY

University Park



July 2010



New Media Systems, Inc.
804.359.3620
www.newmediasystems.net

September 2010



November 2010



JAMES MADISON UNIVERSITY

University Park



January 2011



JAMES MADISON UNIVERSITY

University Park



March 2011



May 2011



JAMES MADISON UNIVERSITY

University Park



June 2011



JAMES MADISON UNIVERSITY

University Park



July 2011



September 2011



October 2011



JAMES MADISON UNIVERSITY

University Park



November 2011



January 2012



February 2012



March 2012



JAMES MADISON UNIVERSITY

University Park



April 2012



JAMES MADISON UNIVERSITY

University Park



May 2012



JAMES MADISON UNIVERSITY

University Park



June 2012



JAMES MADISON UNIVERSITY

University Park



August 2012



JAMES MADISON UNIVERSITY

University Park



September 2012



Fun Facts

Site -83 Acres with 65
Acres Constructed

Site adjacent to JMU Arboretum

9,930 Linear Feet of Wall

430K Square Feet of Artificial
Sports Turf

401,097 CF UGD Capacity

12,400 Linear Feet of Fence

19,500 Linear Feet of Walks

1,076 Number of Trees Planted

Over 1,500,000 CY of earth/rock moved

Rock Blasting from April 2010 through
December 2010



LEED Certification

Decision in early 2013
Very tough for outdoor space.
Hopeful for Silver.



JAMES MADISON UNIVERSITY

University Park



Today

