

OFFICE OF INSTITUTIONAL RESEARCH

# STATISTICAL SUMMARY

2008-09



### INTRODUCTION

Since the first issue in 1973, the *Statistical Summary* has been updated annually to incorporate the latest information concerning the students, faculty, programs, finances, and facilities of James Madison University. Data were compiled from numerous sources to provide a valuable reference to the university community and beyond. These sources include datasets and reports prepared for state and federal government agencies, reports submitted to private organizations, internal reports produced by university offices, and summaries that were prepared especially for the *Statistical Summary*.

The *Statistical Summary* is also published on the World Wide Web for the 14th year. All tables are posted to give you Internet access as soon as the information is available. The Web version is located at: [http://www.jmu.edu/instresrch/statsum/2008\\_09/2008-09toc.shtml](http://www.jmu.edu/instresrch/statsum/2008_09/2008-09toc.shtml).

We are quite proud to display the photographic talent of JMU students participating in Institutional Research's "Picture-It!" project. Be sure to see their work on the cover page and section dividers of this publication. These students are documenting their JMU experience with pictures and discussing their work in IR sponsored focus groups.

We respond to suggestions to improve the information in the *Statistical Summary*. Be sure to see "Section VI Alumni" added last year. Here we present three new tables on employment, income, and graduate education of bachelor's degree completers two years after their graduation. We have also expanded off-campus detail in several tables in recent years.

Some other items of interest are:

- Fall headcount grew by 3.0% or 536 students (Table 2-1).
- The six-year graduation rate increased to 82% for the first time since 1989 (Table 2-25).
- For the second consecutive year, both the number and percentage of on-campus males increased (Table 2-2).
- Asian/Pacific Islanders continued to be the largest student minority group with 867 students on- and off-campus (Table 2-7). However, 999 students did not report their race or ethnicity.

The *Statistical Summary* is an example of teamwork at its best. The Institutional Research staff contributed in the following general ways, but everyone pitched in to see the work completed. Dr. Frank Doherty consulted with the Editor. Chuck DeHart edited the document and, with Rosemary Brenner, Elaine Smith, and Dr. Peter De Michele compiled and verified the data. Rosemary and Tina Grace coordinated the efforts of Brian Sostak and Lauren Kershner (graduate assistants) that helped move the information to the Web. We all hope that the *Statistical Summary* will be useful in your work.

Chuck DeHart  
Editor

---



---

**TABLE OF CONTENTS**
**Chapter-Page**

<b>AN INTRODUCTION TO JAMES MADISON UNIVERSITY .....</b>	<b>I-1</b>
Mission Statement .....	I-3
James Madison University Board of Visitors, 2008-09 .....	I-3
James Madison University 2008-09 Facts and Figures .....	I-4
James Madison University Organizational Chart, November 2008 .....	I-6
James Madison University Administration, Fall 2008 .....	I-7
Deans, Academic Unit Heads and Library Administration, 2008-09.....	I-8
Explanation of Sources .....	I-10
<b>STUDENT INFORMATION.....</b>	<b>II-1</b>
TABLE 2-1 On and Off-Campus Headcount, Fall 1971 – Fall 2008.....	II-3
TABLE 2-2 On-Campus Headcount by Sex, Fall 1979 – Fall 2008.....	II-5
TABLE 2-3 On-Campus Headcount by Residence, Fall 1979 – Fall 2008.....	II-6
TABLE 2-4 Headcount by Academic Level and Sex, Fall 2007 – Fall 2008 .....	II-7
TABLE 2-5 Headcount by Academic Level and Full-Time/Part-Time Status, Fall 2007 – Fall 2008.....	II-8
TABLE 2-6 On-Campus Headcount by Age and Academic Level, Fall 2008.....	II-9
TABLE 2-7 Headcount by Ethnicity and Academic Level, Fall 2006 – Fall 2008.....	II-10
TABLE 2-8 On-Campus Headcount by Leading Geographical Sources, Fall 2008.....	II-13
TABLE 2-9 Headcount by Academic Level, Summer 2000 – Summer 2008 .....	II-16
TABLE 2-10 On-Campus Credit Hour Production by Department, Fall 2006 – Fall 2008.....	II-17

TABLE 2-11	On-Campus Credit Hour Production by Student Level, Fall 2008.....	II-19
TABLE 2-12	On-Campus Credit Hours and Full-Time Equivalent Students by Level, Regular Session, 1997-98 – 2007-08 .....	II-21
TABLE 2-13	On-Campus Credit Hour Production by Department, Summer 2005 – Summer 2008 .....	II-22
TABLE 2-14 ON	On-Campus Credit Hour Production by Department and Student Level, Summer 2008 .....	II-24
TABLE 2-14 OFF	Off-Campus Credit Hour Production by Department and Student Level, Summer 2008 .....	II-26
TABLE 2-15	On-Campus Credit Hours and Full-Time Equivalent Students by Level, Summer 1997-98 – Summer 2007-08 .....	II-28
TABLE 2-16	On and Off-Campus Headcount, Fall 1997 – Fall 2008.....	II-29
TABLE 2-17	Off-Campus Credit Hour Production by Student Level, Fall 2008.....	II-30
TABLE 2-18	Undergraduate Admission Applications, Fall 2004 – Fall 2008.....	II-32
TABLE 2-19	Entering Freshman Class Average SAT Scores, Fall 1990 – Fall 2008.....	II-34
TABLE 2-20	Entering Freshman Class SAT Score Distribution by Sex, Fall 2008.....	II-35
TABLE 2-21	Grade Distribution by College and Course Level, Fall 2008.....	II-36
TABLE 2-22	Undergraduate Median Cumulative Grade Point Averages by Sex, End of Spring in Alternate Years, 1990-91 – 2006-07.....	II-37
TABLE 2-23	Headcount by Graduate Student Levels, Fall 2008 .....	II-38
TABLE 2-24	Full-Time Equivalent Students by Session, 1983-84 – 2007-08.....	II-39
TABLE 2-25	Graduation Rates for Fall Entering Freshman Class, 1983 – 2004 .....	II-40

TABLE 2-26	Return Rates for Fall Entering Freshman Class, 1989 – 2007.....	II-41
TABLE 2-27	Non-Resident Alien Headcount by Country and Academic Level, Fall 2008.....	II-42

### **ACADEMIC DEPARTMENTS AND DEGREE PROGRAMS..... III-1**

TABLE 3-1	Degree Programs Approved by the State Council of Higher Education, 2008-09 .....	III-3
TABLE 3-2	Degrees Conferred Totals, 1993-94 – 2007-08 .....	III-5
TABLE 3-3	Bachelor's Degrees Conferred by First Major and CIP Code, 2004-05 – 2007-08 .....	III-6
TABLE 3-4	Bachelor's Degrees Conferred by Second Major and CIP Code, 2007-08.....	III-8
TABLE 3-5	Graduate Degrees Conferred by Major and CIP Code, 2004-05 – 2007-08 .....	III-9
TABLE 3-6	Degrees Conferred History by Degree level, 1909 – 2008 .....	III-10
TABLE 3-7	Education Students Completing Endorsements for the Collegiate Professional, Post Graduate Professional, or Advanced License, 2007-08.....	III-12
TABLE 3-8	Library Collections and Services, 2003-04 – 2007-08.....	III-14
TABLE 3-9	On and Off-Campus First Majors by College and Full-Time/Part- Time Status, Fall 2008.....	III-15
TABLE 3-10	On and Off-Campus First Majors by Race, Fall 2008.....	III-18
TABLE 3-11	On and Off-Campus First Majors by College, Fall 2003 – Fall 2008 .....	III-21
TABLE 3-12	On and Off-Campus First Majors by College, Sex, and Full- Time/Part-Time Status, Fall 2008 .....	III-24
TABLE 3-13	Teacher Licensure Programs Headcount by SCHEV Program Description, Fall 2008.....	III-25

<b>FACULTY AND STAFF .....</b>	<b>IV-1</b>
TABLE 4-1 Full-Time Instructional Faculty by Department and Tenure, Fall 2008.....	IV-3
TABLE 4-2 Full-Time Instructional Faculty by Sex and Terminal Degree, Fall 2008.....	IV-5
TABLE 4-3 All Full-Time Faculty by Doctorate Source, Fall 2008.....	IV-7
TABLE 4-4 Full-Time Instructional Faculty, Average Academic Term Salary and Compensation by Rank, 2004-05 – 2008-09 .....	IV-8
TABLE 4-5 Full-Time Educational and General Staff by Functional Category, Fall 2004 – Fall 2008.....	IV-10
TABLE 4-6 All Full-Time Faculty by College, Tenure Status, Sex and Ethnicity, Fall 2008.....	IV-11
TABLE 4-7 Instructional Faculty by Employment Status, College, and Department, Fall 2008.....	IV-13
TABLE 4-8 Full-Time Classified Staff by EEO Occupational Category, Sex and Ethnicity, Fall 2008 .....	IV-15
<b>FACILITIES AND FINANCE.....</b>	<b>V-1</b>
TABLE 5-1 Biennial General Fund Appropriations for Operating Expenses and Capital Outlay, 1972-74 – 2008-10.....	V-3
TABLE 5-2 Statement of Revenues, Expenses, and Changes in Net Assets, Fiscal Years 2005-06 – 2007-08 .....	V-4
TABLE 5-3 Institutional Space Profile by IPEDS Function, Fall 2008.....	V-5
TABLE 5-4 Consolidated Statements of Activities and Resource Utilization, Fiscal Years 2006-07 – 2007-08 .....	V-6
TABLE 5-5 Fair Market Value of Endowments, Fiscal Years 1998-99 – 2007-08 .....	V-7
<b>ALUMNI.....</b>	<b>VI-1</b>
TABLE 6-1 Employment and Education of Graduates Two Years Out, 2004-05 – 2006-07 .....	VI-3
TABLE 6-2 Full-Time Salary by Major of Graduates Two Years Out, 2004-05 – 2006-07 Combined.....	VI-5

---



---

**TABLE OF FIGURES**

FIGURE 2-1	On-Campus Headcount, Fall 1998 – Fall 2008 .....	II-4
FIGURE 2-2	On-Campus Headcount, Fall 2008 .....	II-4
FIGURE 2-3	African-American Student Headcount, Fall 1999 – Fall 2008.....	II-12
FIGURE 2-4	Entering Freshman Class Headcount by Sex, Fall 1995 – Fall 2008 .....	II-12
FIGURE 2-5	Virginia Students at JMU, Fall 2008.....	II-14
FIGURE 2-6	On-Campus Students by Three-Digit Zip Code, Fall 2008.....	II-15
FIGURE 2-7	Total Headcount, Fall 1999 – Fall 2008.....	II-29
FIGURE 2-8	Entering Freshman Class Applications by Sex, Fall 2008 .....	II-33
FIGURE 2-9	Entering Freshman Class Average SAT Scores, Fall 1998 – Fall 2008.....	II-33
FIGURE 2-10	Undergraduate Grade Distribution, Fall 2008.....	II-37
FIGURE 2-11	Non-Resident Aliens by Country, Fall 2008 .....	II-44
FIGURE 3-1	Degrees Conferred, 1998-99 – 2007-08 .....	III-5
FIGURE 4-1	Instructional Faculty, Average Salary by Rank, Fall 2008 .....	IV-9
FIGURE 5-1	Institutional Space Profile, Square Feet, Fall 2008 .....	V-5
FIGURE 5-2	Fair Market Value of Endowments, Fiscal Years 1999-00 – 2007-08.....	V-7

# An Introduction to James Madison University



---

---

**MISSION STATEMENT**

We are a community committed to preparing students to be educated and enlightened citizens who lead productive and meaningful lives.

**JAMES MADISON UNIVERSITY BOARD OF VISITORS,  
2008-09**

Meredith Strohm Gunter - Rector

James "Jim" E. Hartman - Vice Rector

Donna L. Harper - Secretary

Mark T. Bowles

Joseph F. Damico

Ronald C. Devine

Vanessa M. Evans

Lois J. Forbes

Charles H. Foster, Jr.

Joseph K. Funkhouser, II

Stephen R. Leeolou

Elizabeth V. Lodal

Wharton B. Rivers, Jr.

Larry M. Rogers

Judith "Judy" S. Strickler

Fred D. Thompson, Jr.

Marley Green, student member

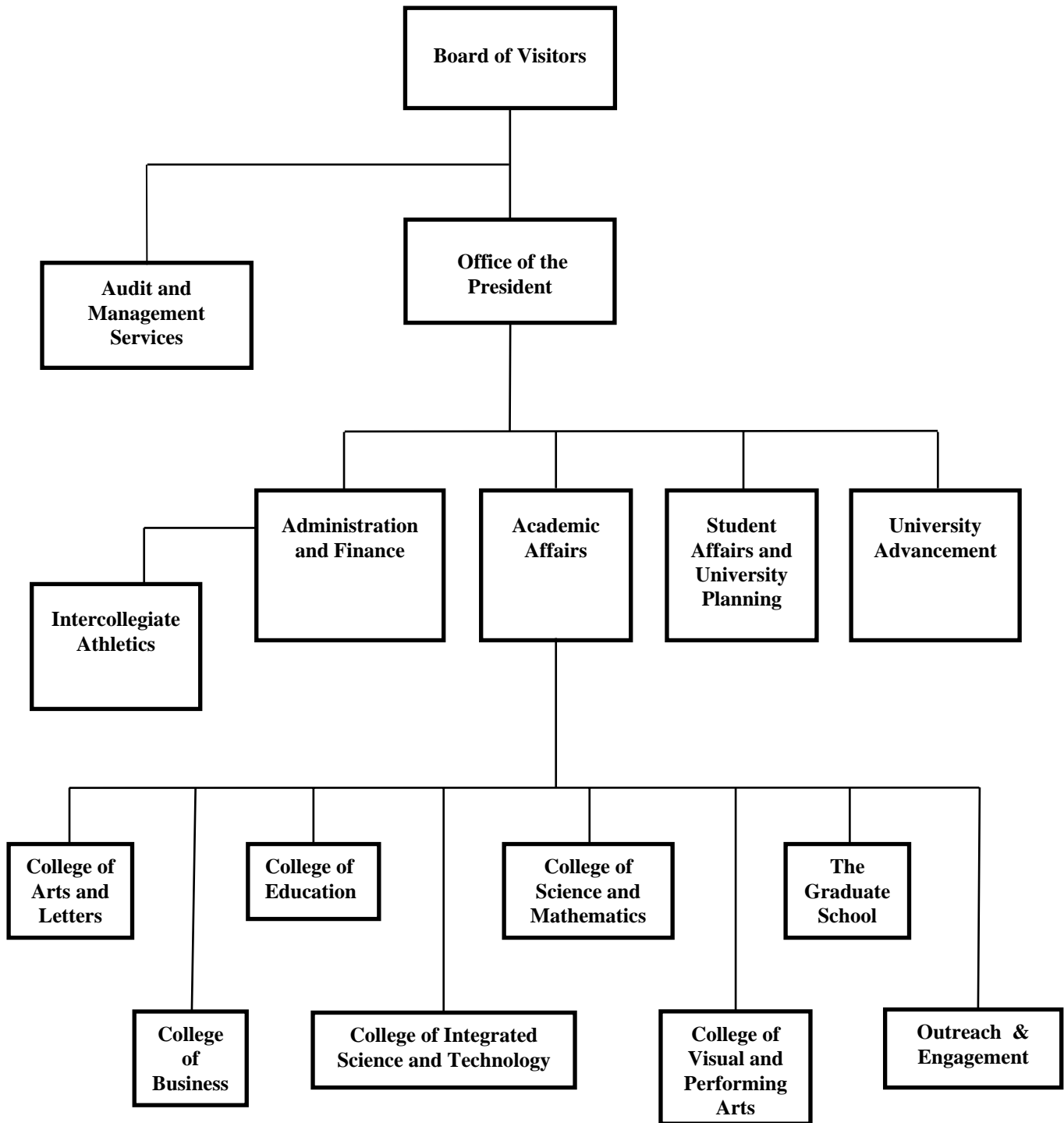
## JAMES MADISON UNIVERSITY 2008-09 FACTS AND FIGURES

HISTORY	<p>1908 Established by the Virginia General Assembly as the State Normal and Industrial School for Women at Harrisonburg.</p> <p>1914 Name changed to the State Normal School for Women at Harrisonburg.</p> <p>1924 Name changed to the State Teachers College at Harrisonburg.</p> <p>1938 Name changed to Madison College in honor of the fourth President of the United States.</p> <p>1966 By action of the Virginia General Assembly, became a coeducational institution.</p> <p>1977 Name changed to James Madison University.</p>	
CAMPUS SIZE	696 acres, including 31 acres at the University Farm.	
INSTRUCTIONAL AREAS	<p>College of Arts and Letters</p> <p>College of Business</p> <p>College of Education</p> <p>College of Integrated Science and Technology</p> <p>College of Science and Mathematics</p> <p>College of Visual and Performing Arts</p> <p>The Graduate School</p> <p>Outreach and Engagement</p>	
BUILDINGS	<p>Educational &amp; General (Academic/Administrative)</p> <p>Auxiliary (Campus Center, Recreation, Dining, Cultural, etc.)</p> <p>Student Housing</p> <p style="padding-left: 20px;">Total</p>	<p>61</p> <p>14</p> <p>33</p> <p>108</p>
BUILDINGS UNDER CONSTRUCTION	<p>Center for Performing Arts</p> <p>CISAT Residence Hall</p> <p>CISAT Dining Hall</p>	<p>\$96.8 million</p> <p>\$34.3 million</p> <p>\$21.9 million</p>
CONVOCATION CENTER	A 7,300 seat, \$10.8 million sports and entertainment arena designed for basketball, concerts, and other sports and entertainment events.	
ATHLETIC PROGRAM	More than 400 student athletes compete in 7 men's and 13 women's sports including baseball, basketball, cheerleading, cross-country/track, field hockey, football, golf, lacrosse, soccer, softball, swimming/diving, tennis, and volleyball.	
TOTAL OPERATING BUDGET 2008-09	Educational & General, Auxiliary Enterprises, Financial Aid, and Sponsored Programs	\$381,824,659

**JAMES MADISON UNIVERSITY  
2008-09 FACTS AND FIGURES CONTINUED**

ON AND OFF-CAMPUS ENROLLMENT FALL 2008	Total Enrollment	18,454
	Undergraduate	16,648
	Graduate	1,241
	Non-Degree Seeking Undergraduate	268
	Non-Degree Seeking Graduate	297
	Full-Time	17,098
	Part-Time	1,356
	Percent Male	40%
	Percent Female	60%
	Percent In-State	71%
	Percent Out-of-State	29%
	Percent Minority	12%
	Percent African-American	4%
UNIVERSITY HOUSING ON-CAMPUS FULL-TIME UNDERGRADUATES	Residence Halls Population	5,774
	Percent Residence Halls	36%
	Percent Commuting Students	64%
ENTERING FRESHMAN CLASS 2008	Number Enrolled	3,957
	Average SAT Score	1,148
DEGREES CONFERRED 2007-08	Undergraduate	3,504
	Graduate	639
FACULTY & STAFF FALL 2008	Full-Time	2,554
	Instructional & Research Faculty	897
	Administrative & Professional Faculty	436
	Classified Staff	1,221
	Percent Tenured Faculty	49%
	Percent Female Faculty	46%
	Average Faculty Salary	\$67,606
	Part-Time	
Instructional Faculty	312	
TUITION & FEES 2008-09	In-State	\$6,964
	Out-of-State	\$18,458
ROOM & BOARD (per year)	Room and Board	\$7,172
SCHOLARSHIPS & GRANTS 2008-09	Percent of	24%
	Range of Annual Awards	\$41-\$25,916
	Total	\$22,025,697
LOANS 2008-09	Percent of Undergraduate Students Receiving Aid	35%
	Range of Annual Awards	\$117-\$12,500
	Total	\$34,775,665

**JAMES MADISON UNIVERSITY  
ORGANIZATIONAL CHART,  
NOVEMBER 2008**



**JAMES MADISON UNIVERSITY ADMINISTRATION,  
FALL 2008**

<b>President .....</b>	<b>Linwood H. Rose</b>
Executive Assistant to the President.....	Donna L. Harper
Assistant to the President.....	Nicholas L. Langridge
Special Assistant for Diversity – Students.....	Arthur T. Dean, II
Special Assistant for Diversity – Faculty .....	David Owusu-Ansah
Director of Audit & Management Services .....	Larry L. Holsinger
<b>Provost and Senior Administrators for Academic Affairs.....</b>	<b>Douglas T. Brown</b>
Vice Provost for Academic Affairs.....	A. Jerry Benson
Vice Provost for Academic Affairs.....	Teresa A. Gonzalez
Vice Provost for Academic Affairs.....	John B. Noftinger
Associate Vice Provost for International Programs.....	Lee G. Sternberger
Associate Vice Provost for Public Policy .....	T. Dary Erwin
Associate Vice President for Student Success Programs.....	Randy L. Mitchell*
Assistant Vice President for Academic Resources .....	J.W. Myers
<b>Senior Vice President for Administration &amp; Finance .....</b>	<b>Charles W. King</b>
Associate Vice President for Business Services .....	Towana H. Moore
Assistant Vice President for Budget Management .....	Diane L. Stamp
Assistant Vice President for Finance .....	John F. Knight
Assistant Vice President for Human Resources, Training & Performance .....	Brian J. Charette
Assistant Vice President for Information Technology .....	Dale B. Hulvey
<b>Director of Athletics.....</b>	<b>Jeffrey T. Bourne</b>
Associate Athletic Director for Development & Marketing.....	Geoffrey H. Polglase
Associate Athletic Director, Senior Woman Administrator .....	Shelia A. Moorman
Associate Athletic Director for Sports Programs .....	Kevin J. White
Associate Athletic Director for Student – Athlete Services .....	Linda Casey Carter
<b>Senior Vice President for University Advancement .....</b>	<b>Joanne B. Carr</b>
Associate Vice President for Communications & Marketing.....	Andrew D. Perrine
Associate Vice President for Constituent Relations .....	C. Steven Smith
Associate Vice President for Development .....	Weston W. Hatfield
Associate Vice President for Information Services .....	Chris N. Pipkins, Interim
<b>Senior Vice President for Student Affairs &amp; University Planning .....</b>	<b>Mark J. Warner</b>
Associate Vice President for Multicultural Awareness & Student Health... ..	Marsha Mays-Bernard
Associate Vice President for Student Success Programs.....	Randy L. Mitchell*
Associate Vice President for Student Life.....	James W. McConnel
Associate Vice President for University Planning & Analysis .....	Alfred J. Menard

\*Joint Appointment with Academic Affairs

**DEANS, ACADEMIC UNIT HEADS,  
AND LIBRARY ADMINISTRATION,  
2008-09**

**College of Arts & Letters**

**Dean..... David K. Jeffrey**

**Academic Unit Heads**

Center for Liberal & Applied Social Sciences – Justice Studies ..... Glenn P. Hastedt  
 English ..... Mark L. Parker  
 Foreign Languages, Literatures, & Cultures ..... Giuliana Fazzion  
 History ..... Michael J. Galgano  
 Philosophy & Religion ..... Alan K. Kirk  
 Political Science ..... Jessica R. Adolino  
 School of Communication Studies ..... William D. Kimsey, Interim  
 School of Media Arts & Design ..... Steven D. Anderson  
 School of Writing, Rhetoric, & Technical Communication ..... Shelley B. Aley, Interim  
 Sociology & Anthropology ..... H. B. Cavalcanti

**College of Business**

**Dean..... Robert D. Reid**

Associate Dean for Academic Programs ..... Philip B. DuBose  
 Associate Dean for Human Resource & Administration ..... Kimberley A. Foreman  
 Associate Dean for Student Services ..... Joyce W. Guthrie

**Academic Unit Heads**

**School of Professional Studies**

Accounting ..... Paul A. Copley  
 Computer Information Systems & Management Science ..... Richard G. Mathieu  
 Economics ..... Ehsan Ahmed  
 Finance & Business Law ..... Pamela P. Drake  
 Hospitality & Tourism Management ..... Michael J. O’Fallon  
 Management ..... Paula S. Daly  
 Marketing ..... Irvine Clarke, III

**School of Integrated Studies**

BBA Core ..... Kenneth C. Williamson  
 International Business ..... Marion M. White  
 Master of Business Administration ..... Paul E. Bierly

**DEANS, ACADEMIC UNIT HEADS,  
AND LIBRARY ADMINISTRATION,  
2008-09, CONTINUED**

**College of Education**

<b>Dean</b> .....	<b>Phillip M. Wishon</b>
Associate Dean.....	Margaret B. Shaeffer
Associate Dean.....	Margaret M. Kyger

**Academic Unit Heads**

Early, Elementary & Reading Education.....	Martha Ross
Exceptional Education .....	Laura Desportes
Learning, Technology & Leadership Education .....	Diane L. Foucar-Szocki
Middle, Secondary & Mathematics Education .....	Steven L. Purcell
Military Science .....	Rodney L. Lusher

**College of Integrated Science & Technology**

<b>Dean</b> .....	Sharon E. Lovell, Interim
Associate Dean.....	Rhonda M. Zingraff
Assistant Dean.....	Jonathan H. Spindel

**Academic Unit Heads**

Communication Sciences & Disorders .....	Vicki A. Reed
Computer Science .....	Malcolm G. Lane
Health Sciences .....	Robert E. Koslow
Integrated Science & Technology.....	Pauline K. Cushman, Interim
Kinesiology .....	Michael S. Goldberger
Nursing.....	Merle E. Mast
Psychology .....	Michael L. Stoloff
Psychology, Graduate .....	Sheena J. Rogers
Social Work.....	R. Ann Myers

**College of Science & Mathematics**

<b>Dean</b> .....	<b>David F. Brakke</b>
Associate Dean.....	Judith A. Dilts
Assistant Dean.....	J. Robert Hanson

**Academic Unit Heads**

Biology.....	Judith A. Dilts, Interim
Chemistry & Biochemistry .....	Richard D. Foust
Geology & Environmental Science.....	Stephen D. Leslie
Mathematics & Statistics .....	David C. Carothers
Physics & Astronomy .....	C. Steven Whisnant

**DEANS, ACADEMIC UNIT HEADS,  
AND LIBRARY ADMINISTRATION,  
2008-09, CONTINUED**

**College of Visual & Performing Arts**

**Dean**..... **George E. Sparks**  
Associate Dean ..... Marilou M. Johnson

**Academic Unit Heads**

School of Art & Art History ..... Leslie M. Bellavance  
School of Music ..... Jeffrey A. Showell  
School of Theatre & Dance ..... William J. Buck

**School of Engineering**

**Academic Unit Head**.....**Ronald G. Kander**

**University Studies**

**Dean**..... **Linda Cabe Halpern**  
Associate Dean .....Herbert K. Amato  
Associate Dean ..... Margaret M. Mulrooney  
Assistant Dean .....Catherine Mahoney Crummett

**Libraries & Educational Technologies**

**Dean**.....**Ralph A. Alberico**

**The Graduate School**

**Dean**..... **Reid J. Linn**  
Assistant Dean ..... Katherine B. Thompson

**Outreach & Engagement**

Associate Vice Provost ..... James M. Shaeffer, Sr.  
Director ..... Carol A. Fleming

**EXPLANATION OF SOURCES**

Data for the *Statistical Summary* were gathered from a variety of sources, including internal statistical reports, the Student Administration, Human Resources and Finance computing systems, reports sent by the Office of Institutional Research to state and federal government agencies, and from other JMU departments. The source(s) is(are) listed at the end of each table. Wherever possible, tables contain the same data used for reports to the State Council of Higher Education for Virginia (SCHEV) and to the federal government via the Integrated Postsecondary Education Data System (IPEDS).

Please direct any questions about the sources of data or methodology to the Office of Institutional Research. It is important for us to know that you understand this information as well as possible.

# Student Information



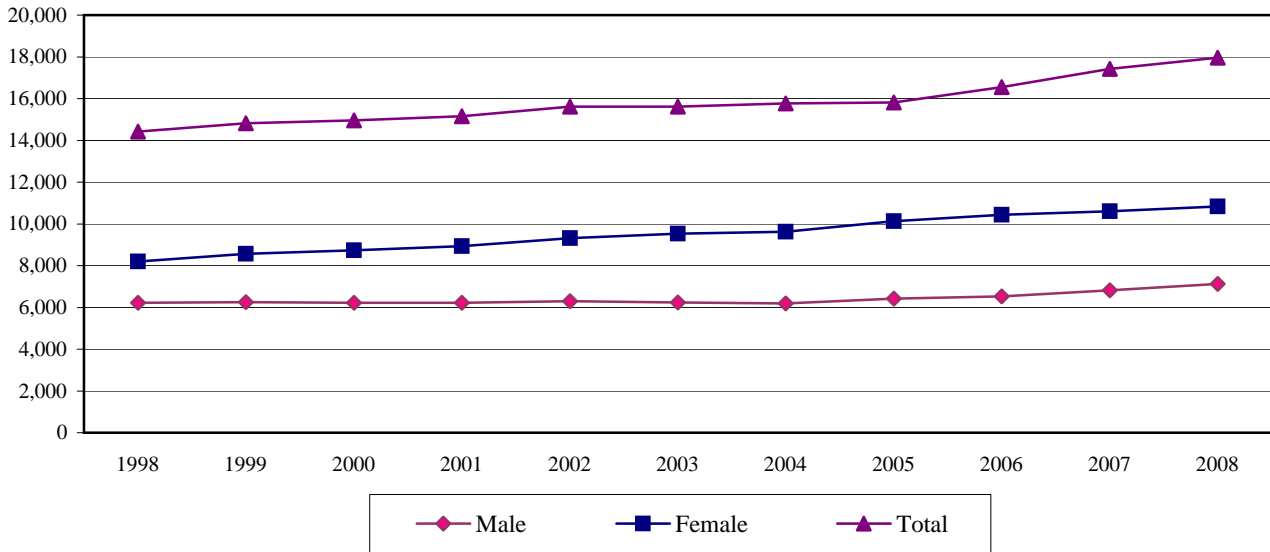
**TABLE 2-1**  
**ON AND OFF-CAMPUS HEADCOUNT,**  
**FALL 1971 - FALL 2008**

FALL SEMESTER	ON-CAMPUS	OFF-CAMPUS	TOTAL	PERCENT CHANGE
1971-72	4,562	--	4,562	--
1972-73	5,492	--	5,492	20.4%
1973-74	6,288	--	6,288	14.5%
1974-75	6,841	--	6,841	8.8%
1975-76	7,343	--	7,343	7.3%
1976-77	7,659	--	7,659	4.3%
1977-78	7,926	--	7,926	3.5%
1978-79	8,073	--	8,073	1.9%
1979-80	8,387	--	8,387	3.9%
1980-81	8,817	--	8,817	5.1%
1981-82	8,970	--	8,970	1.7%
1982-83	9,048	--	9,048	0.9%
1983-84	9,242	--	9,242	2.1%
1984-85	9,320	--	9,320	0.8%
1985-86	9,580	--	9,580	2.8%
1986-87	9,757	624	10,381	8.4%
1987-88	10,126	696	10,822	4.2%
1988-89	10,525	381	10,906	0.8%
1989-90	10,709	498	11,207	2.8%
1990-91	11,011	240	11,251	0.4%
1991-92	11,264	213	11,477	2.0%
1992-93	11,203	140	11,343	(1.2%)
1993-94	11,354	149	11,503	1.4%
1994-95	11,539	141	11,680	1.5%
1995-96	11,927	194	12,121	3.8%
1996-97	12,963	246	13,209	9.0%
1997-98	13,714	401	14,115	6.9%
1998-99	14,414	582	14,996	6.2%
1999-00	14,814	409	15,223	1.5%
2000-01	14,961	365	15,326	0.7%
2001-02	15,152	410	15,562	1.5%
2002-03	15,612	353	15,965	2.6%
2003-04	15,769	434	16,203	1.5%
2004-05	15,809	299	16,108	(0.6%)
2005-06	16,546	392	16,938	5.2%
2006-07	16,970	423	17,393	2.7%
2007-08	17,428	490	17,918	3.0%
2008-09	17,964	490	18,454	3.0%

NOTE: Off-campus headcount enrollment as reported to the State Council of Higher Education for Virginia as of the fall census date.

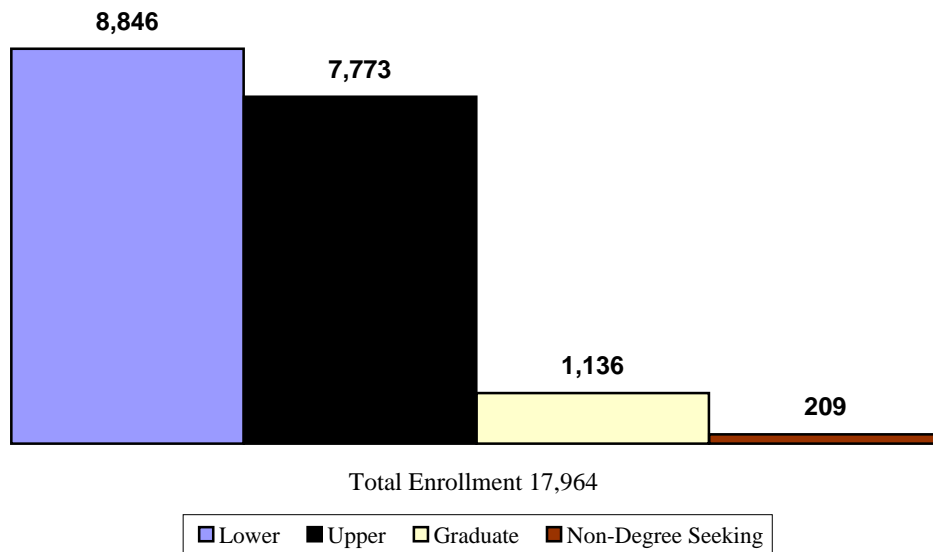
SOURCE: Fall Student Census.

**FIGURE 2-1**  
**ON-CAMPUS HEADCOUNT,**  
**FALL 1998 - FALL 2008**



SOURCE: Fall Student Census.

**FIGURE 2-2**  
**ON-CAMPUS HEADCOUNT,**  
**FALL 2008**



SOURCE: Fall Student Census.

**TABLE 2-2**  
**ON-CAMPUS HEADCOUNT BY SEX,**  
**FALL 1979 - FALL 2008**

FALL SEMESTER	MALE	PERCENT	FEMALE	PERCENT
1979-80	3,857	46.0%	4,530	54.0%
1980-81	3,964	45.0%	4,853	55.0%
1981-82	4,013	44.7%	4,957	55.3%
1982-83	4,097	45.3%	4,951	54.7%
1983-84	4,137	44.8%	5,105	55.2%
1984-85	4,107	44.1%	5,213	55.9%
1985-86	4,197	43.8%	5,383	56.2%
1986-87	4,195	43.0%	5,562	57.0%
1987-88	4,410	43.6%	5,716	56.4%
1988-89	4,605	43.8%	5,920	56.2%
1989-90	4,738	44.2%	5,971	55.8%
1990-91	4,888	44.4%	6,123	55.6%
1991-92	4,964	44.1%	6,300	55.9%
1992-93	4,945	44.1%	6,258	55.9%
1993-94	4,987	43.9%	6,367	56.1%
1994-95	5,159	44.7%	6,380	55.3%
1995-96	5,338	44.8%	6,589	55.2%
1996-97	5,754	44.4%	7,209	55.6%
1997-98	6,045	44.1%	7,669	55.9%
1998-99	6,216	43.1%	8,198	56.9%
1999-00	6,246	42.2%	8,568	57.8%
2000-01	6,218	41.6%	8,743	58.4%
2001-02	6,215	41.0%	8,937	59.0%
2002-03	6,296	40.3%	9,316	59.7%
2003-04	6,232	39.5%	9,537	60.5%
2004-05	6,187	39.1%	9,622	60.9%
2005-06	6,422	38.8%	10,124	61.2%
2006-07	6,535	38.5%	10,435	61.5%
2007-08	6,820	39.1%	10,608	60.9%
2008-09	7,129	39.7%	10,835	60.3%

SOURCE: Fall Student Census.

**TABLE 2-3**  
**ON-CAMPUS HEADCOUNT BY RESIDENCE,**  
**FALL 1979 - FALL 2008**

FALL SEMESTER	IN-STATE	PERCENT	OUT-OF-STATE	PERCENT
1979-80	6,799	81.1%	1,588	18.9%
1980-81	7,096	80.5%	1,721	19.5%
1981-82	7,118	79.4%	1,852	20.6%
1982-83	7,145	79.0%	1,903	21.0%
1983-84	7,234	78.3%	2,008	21.7%
1984-85	7,301	78.3%	2,019	21.7%
1985-86	7,445	77.7%	2,135	22.3%
1986-87	7,504	76.9%	2,253	23.1%
1987-88	7,783	76.9%	2,343	23.1%
1988-89	8,149	77.4%	2,376	22.6%
1989-90	8,389	78.3%	2,320	21.7%
1990-91	8,554	77.7%	2,457	22.3%
1991-92	8,707	77.3%	2,557	22.7%
1992-93	8,568	76.5%	2,635	23.5%
1993-94	8,535	75.2%	2,819	24.8%
1994-95	8,505	73.7%	3,034	26.3%
1995-96	8,584	72.0%	3,343	28.0%
1996-97	9,062	69.9%	3,901	30.1%
1997-98	9,499	69.3%	4,215	30.7%
1998-99	10,056	69.8%	4,358	30.2%
1999-00	10,489	70.8%	4,325	29.2%
2000-01	10,583	70.7%	4,378	29.3%
2001-02	10,702	70.6%	4,450	29.4%
2002-03	11,089	71.0%	4,523	29.0%
2003-04	11,081	70.3%	4,688	29.7%
2004-05	11,254	71.2%	4,555	28.8%
2005-06	11,685	70.6%	4,861	29.4%
2006-07	11,961	70.5%	5,009	29.5%
2007-08	12,266	70.4%	5,162	29.6%
2008-09	12,632	70.3%	5,332	29.7%

SOURCE: Fall Student Census.

**TABLE 2-4**  
**HEADCOUNT BY ACADEMIC LEVEL AND SEX,**  
**FALL 2007 - FALL 2008**

ACADEMIC LEVEL	2007			2008		
ON-CAMPUS	Male	Female	Total	Male	Female	Total
Freshman (First-time & Other)	1,695	2,634	4,329	1,797	2,687	4,484
Sophomore	1,663	2,640	4,303	1,780	2,582	4,362
Junior	1,529	2,271	3,800	1,538	2,272	3,810
Senior	1,484	2,173	3,657	1,587	2,376	3,963
Undergraduate Degree Seeking Total	6,371	9,718	16,089	6,702	9,917	16,619
Graduate	346	679	1,025	320	703	1,023
Advanced Graduate	31	81	112	24	89	113
Graduate Degree Seeking Total	377	760	1,137	344	792	1,136
Non-degree Seeking Undergraduate	48	78	126	45	62	107
Non-degree Seeking Graduate	24	52	76	38	64	102
Non-degree Seeking Total	72	130	202	83	126	209
ON-CAMPUS TOTAL	6,820	10,608	17,428	7,129	10,835	17,964
OFF-CAMPUS	Male	Female	Total	Male	Female	Total
Undergraduate Degree Seeking Total	11	8	19	10	19	29
Graduate Degree Seeking Total	97	32	129	69	36	105
Non-degree Seeking Undergraduate	82	98	180	87	74	161
Non-degree Seeking Graduate	23	139	162	26	169	195
OFF-CAMPUS TOTAL	213	277	490	192	298	490
ON AND OFF-CAMPUS	Male	Female	Total	Male	Female	Total
Undergraduate Degree Seeking Total	6,382	9,726	16,108	6,712	9,936	16,648
Graduate Degree Seeking Total	474	792	1,266	413	828	1,241
Non-degree Seeking Undergraduate	130	176	306	132	136	268
Non-degree Seeking Graduate	47	191	238	64	233	297
ON AND OFF-CAMPUS TOTAL	7,033	10,885	17,918	7,321	11,133	18,454

NOTE: "Non-degree Seeking" is synonymous with "Special" or "Unclassified."

SOURCE: Fall Student Census.

TABLE 2-5

**HEADCOUNT BY ACADEMIC LEVEL AND FULL-TIME/PART-TIME STATUS,  
FALL 2007 - FALL 2008**

ACADEMIC LEVEL	2007			2008		
	Full-Time	Part-Time	Total	Full-Time	Part-Time	Total
<b>ON-CAMPUS</b>						
Freshman (First-time & Other)	4,297	32	4,329	4,465	19	4,484
Sophomore	4,239	64	4,303	4,320	42	4,362
Junior	3,695	105	3,800	3,692	118	3,810
Senior	3,380	277	3,657	3,691	272	3,963
Undergraduate Degree Seeking Total	15,611	478	16,089	16,168	451	16,619
Graduate	750	275	1,025	785	238	1,023
Advanced Graduate	80	32	112	82	31	113
Graduate Degree Seeking Total	830	307	1,137	867	269	1,136
Non-degree Seeking Undergraduate	40	86	126	37	70	107
Non-degree Seeking Graduate	9	67	76	6	96	102
Non-degree Seeking Total	49	153	202	43	166	209
<b>ON-CAMPUS TOTAL</b>	<b>16,490</b>	<b>938</b>	<b>17,428</b>	<b>17,078</b>	<b>886</b>	<b>17,964</b>
<b>OFF-CAMPUS</b>						
Undergraduate Degree Seeking Total	0	19	19	0	29	29
Graduate Degree Seeking Total	23	106	129	20	85	105
Non-degree Seeking Undergraduate	0	180	180	0	161	161
Non-degree Seeking Graduate	0	162	162	0	195	195
<b>OFF-CAMPUS TOTAL</b>	<b>23</b>	<b>467</b>	<b>490</b>	<b>20</b>	<b>470</b>	<b>490</b>
<b>ON AND OFF-CAMPUS</b>						
Undergraduate Degree Seeking Total	15,611	497	16,108	16,168	480	16,648
Graduate Degree Seeking Total	853	413	1,266	887	354	1,241
Non-degree Seeking Undergraduate	40	266	306	37	231	268
Non-degree Seeking Graduate	9	229	238	6	291	297
<b>ON AND OFF-CAMPUS TOTAL</b>	<b>16,513</b>	<b>1,405</b>	<b>17,918</b>	<b>17,098</b>	<b>1,356</b>	<b>18,454</b>

NOTE: "Non-degree Seeking" is synonymous with "Special" or "Unclassified."

SOURCE: Fall Student Census.

**TABLE 2-6**  
**ON-CAMPUS HEADCOUNT BY AGE AND ACADEMIC LEVEL,**  
**FALL 2008**

AGE	DEGREE SEEKING UGRADS	DEGREE SEEKING GRADS	NON-DEGREE SEEKING UGRADS	NON-DEGREE SEEKING GRADS	TOTAL
Under 18	102	0	1	0	103
18-19	7,117	0	5	0	7,122
20-21	7,312	21	17	0	7,350
22-24	1,681	644	48	14	2,387
25-29	280	223	12	23	538
30-34	51	97	4	15	167
35-39	18	51	7	16	92
40-44	24	34	4	7	69
45-49	19	32	2	9	62
50-59	9	32	5	16	62
60-64	4	2	1	0	7
65 and Over	2	0	1	2	5
Unknown	0	0	0	0	0
<b>TOTAL</b>	<b>16,619</b>	<b>1,136</b>	<b>107</b>	<b>102</b>	<b>17,964</b>
Average Age	19.9	26.9	26.9	36.3	20.5
Median Age	20	24	23	34	20
Youngest Age	16	20	16	22	16
Oldest Age	68	63	69	65	69

NOTE: Non-Degree Seeking Undergraduates and Non-Degree Seeking Graduates are Special Students.

SOURCE: Fall Student Census.

TABLE 2-7

**HEADCOUNT BY ETHNICITY AND ACADEMIC LEVEL,  
FALL 2006 - FALL 2008**

ACADEMIC LEVEL	2006		2007		2008	
	On-Campus	Off-Campus	On-Campus	Off-Campus	On-Campus	Off-Campus
<b>African-American</b>						
Freshman (First-time & Other)	222	0	178	0	180	0
Sophomore	139	0	207	0	172	0
Junior	85	0	125	1	168	1
Senior	104	0	103	1	140	1
Graduate	33	4	36	5	45	4
Non-degree Undergraduate	8	24	7	14	5	17
Non-degree Graduate	5	11	2	6	4	5
TOTAL	596	39	658	27	714	28
<b>American Indian</b>						
Freshman (First-time & Other)	14	0	14	0	14	0
Sophomore	8	0	13	0	13	0
Junior	11	0	6	0	11	0
Senior	7	0	11	0	6	0
Graduate	3	0	2	1	3	1
Non-degree Undergraduate	1	0	1	0	0	0
Non-degree Graduate	0	0	0	1	0	1
TOTAL	44	0	47	2	47	2
<b>Asian/Pacific Islander</b>						
Freshman (First-time & Other)	212	0	205	0	231	0
Sophomore	194	0	221	0	221	0
Junior	173	0	169	0	178	0
Senior	185	0	177	0	192	0
Graduate	23	9	35	3	29	6
Non-degree Undergraduate	5	2	5	3	1	4
Non-degree Graduate	1	0	2	2	2	3
TOTAL	793	11	814	8	854	13
<b>White</b>						
Freshman (First-time & Other)	3,472	0	3,528	5	3,560	11
Sophomore	3,401	0	3,510	3	3,567	2
Junior	3,110	0	3,160	2	3,141	3
Senior	3,065	0	3,082	5	3,279	10
Graduate	916	83	1,007	108	990	88
Non-degree Undergraduate	150	150	96	161	80	137
Non-degree Graduate	92	121	67	151	93	185
TOTAL	14,206	354	14,450	435	14,710	436

TABLE 2-7 CONTINUED

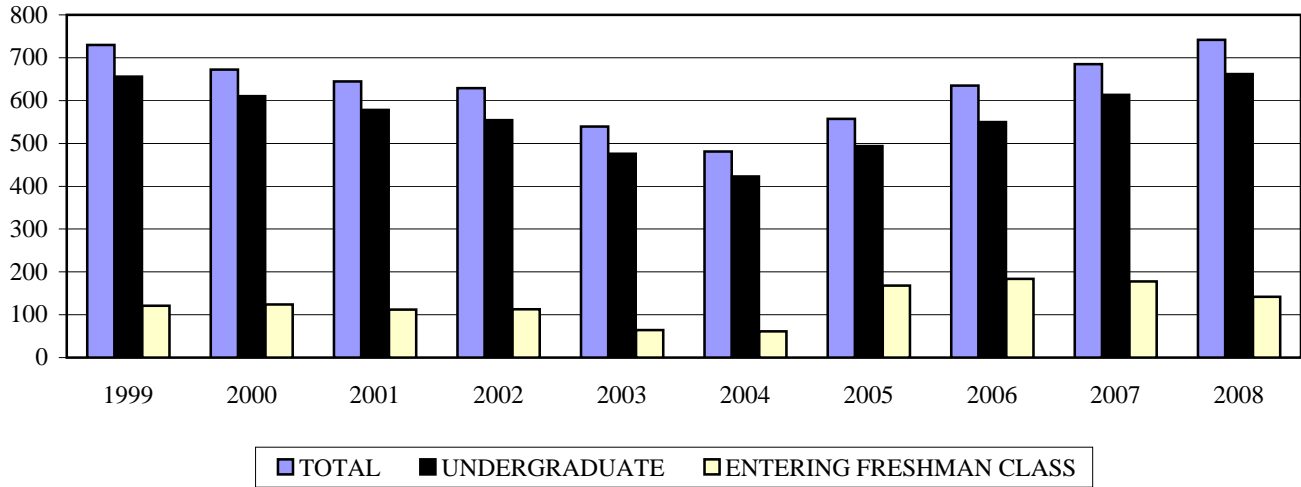
**HEADCOUNT BY ETHNICITY AND ACADEMIC LEVEL,  
FALL 2006 - FALL 2008**

ACADEMIC LEVEL	2006		2007		2008	
	On-Campus	Off-Campus	On-Campus	Off-Campus	On-Campus	Off-Campus
<b>Hispanic</b>						
Freshman (First-time & Other)	100	0	117	0	120	0
Sophomore	94	0	110	0	111	0
Junior	68	0	78	0	98	0
Senior	91	0	72	0	78	0
Graduate	8	4	13	2	11	3
Non-degree Undergraduate	2	2	3	2	3	3
Non-degree Graduate	4	1	3	1	3	1
TOTAL	367	7	396	5	424	7
<b>Unreported</b>						
Freshman (First-time & Other)	197	0	226	0	306	0
Sophomore	238	0	214	1	234	1
Junior	202	0	233	0	189	0
Senior	138	0	193	1	238	0
Graduate	22	7	17	7	27	2
Non-degree Undergraduate	1	1	2	0	2	0
Non-degree Graduate	1	3	2	0	0	0
TOTAL	799	11	887	9	996	3
<b>Non-Resident Alien</b>						
Freshman (First-time & Other)	50	0	61	0	73	0
Sophomore	20	0	28	0	44	0
Junior	23	0	29	0	25	0
Senior	30	0	19	0	30	0
Graduate	25	1	27	3	31	1
Non-degree Undergraduate	14	0	12	0	16	0
Non-degree Graduate	3	0	0	1	0	0
TOTAL	165	1	176	4	219	1
<b>All Ethnic Groups</b>						
Freshman (First-time & Other)	4,267	0	4,329	5	4,484	11
Sophomore	4,094	0	4,303	4	4,362	3
Junior	3,672	0	3,800	3	3,810	4
Senior	3,620	0	3,657	7	3,963	11
Graduate	1,030	108	1,137	129	1,136	105
Non-degree Undergraduate	181	179	126	180	107	161
Non-degree Graduate	106	136	76	162	102	195
GRAND TOTAL	16,970	423	17,428	490	17,964	490

SOURCE: Fall Student Census.

FIGURE 2-3

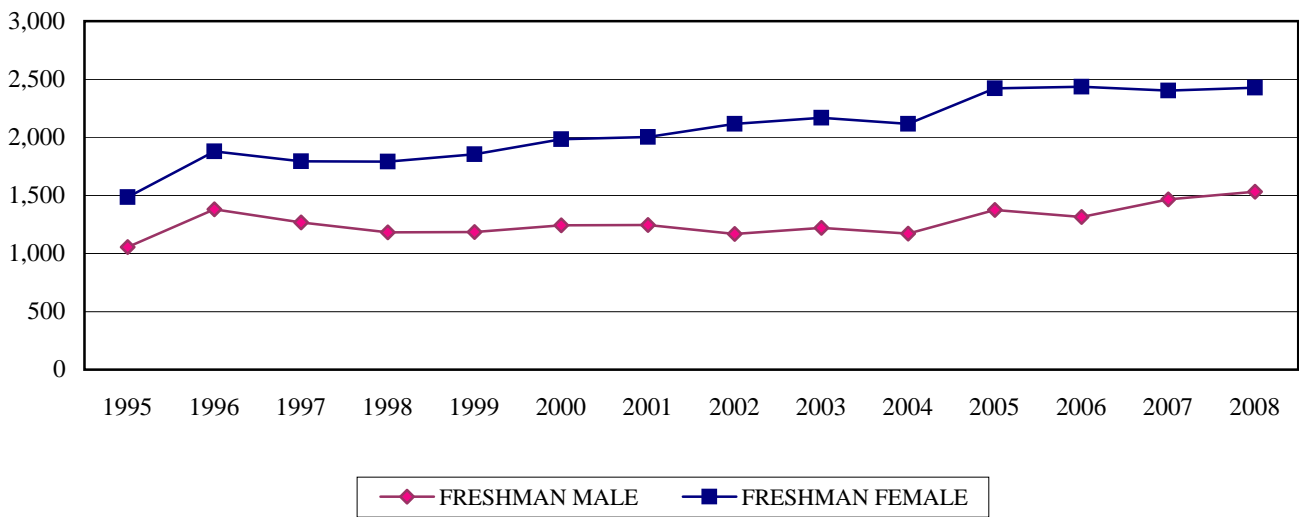
**AFRICAN-AMERICAN STUDENT HEADCOUNT,  
FALL 1999 - FALL 2008**



SOURCE: Fall Student Census.

FIGURE 2-4

**ENTERING FRESHMAN CLASS HEADCOUNT BY SEX,  
FALL 1995 - FALL 2008**



SOURCE: Fall Admissions Data.

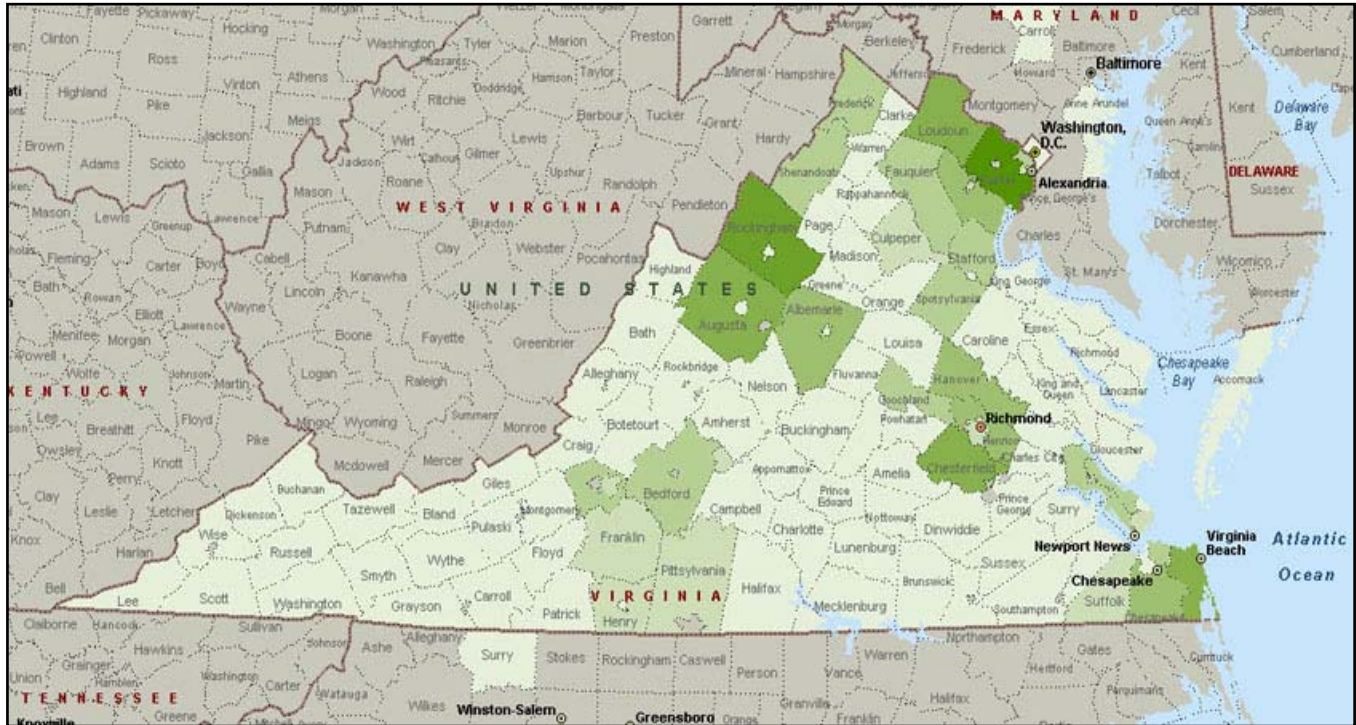
TABLE 2-8

**ON-CAMPUS HEADCOUNT BY LEADING GEOGRAPHICAL SOURCES,  
FALL 2008**

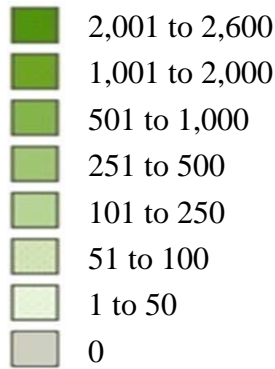
	UNDER- GRADUATE	GRADUATE	NON-DEGREE SEEKING	TOTAL
Virginia Counties				
Fairfax	2,296	101	5	2,402
Loudoun	694	16	2	712
Chesterfield	566	21	0	587
Prince William	524	18	2	544
Henrico	484	25	2	511
Rockingham	340	120	49	509
Albemarle	267	20	3	290
Hanover	268	17	0	285
Virginia Cities				
Virginia Beach	577	27	1	605
Harrisonburg	274	88	39	401
Chesapeake	251	19	1	271
Richmond	206	9	2	217
Newport News	125	1	0	126
Alexandria	111	2	0	113
Norfolk	102	6	0	108
Fairfax	94	2	0	96
Other States				
Maryland	1,197	29	2	1,228
New Jersey	1,115	33	0	1,148
Pennsylvania	875	54	2	931
New York	580	21	1	602
Connecticut	249	17	1	267
Massachusetts	239	7	0	246
North Carolina	66	24	0	90
Delaware	84	4	1	89

SOURCE: Fall Student Census.

**FIGURE 2-5**  
**VIRGINIA STUDENTS AT JMU,**  
**FALL 2008**



**Total Students**

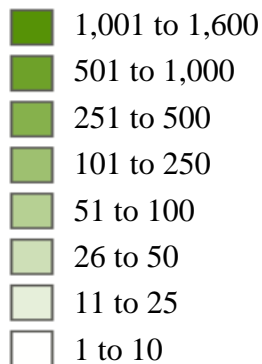


SOURCE: Fall Student Census.

**FIGURE 2-6**  
**ON-CAMPUS STUDENTS BY THREE-DIGIT ZIP CODE,**  
**FALL 2008**



**Total Students**



SOURCE: Fall Student Census.

**TABLE 2-9**  
**HEADCOUNT BY ACADEMIC LEVEL,**  
**SUMMER 2000 - SUMMER 2008**

SUMMER SESSION	LOWER	UPPER	GRADUATE	NON-DEGREE SEEKING UNDER-GRAD	NON-DEGREE SEEKING GRADUATE	TOTAL
2000						
On-Campus	1,117	3,454	351	263	183	5,368
Off-Campus	2	5	55	6	32	100
TOTAL	1,119	3,459	406	269	215	5,468
2001						
On-Campus	1,079	3,601	304	211	213	5,408
Off-Campus	0	5	143	17	53	218
TOTAL	1,079	3,606	447	228	266	5,626
2002						
On-Campus	1,148	3,483	323	208	146	5,308
Off-Campus	0	0	87	74	122	283
TOTAL	1,148	3,483	410	282	268	5,591
2003						
On-Campus	931	3,431	314	192	127	4,995
Off-Campus	0	0	109	74	28	211
TOTAL	931	3,431	423	266	155	5,206
2004						
On-Campus	853	3,387	427	283	169	5,119
Off-Campus	67	137	97	28	91	420
TOTAL	920	3,524	524	311	260	5,539
2005						
On-Campus	824	3,438	566	218	337	5,383
Off-Campus	124	243	111	64	38	580
TOTAL	948	3,681	677	282	375	5,963
2006						
On-Campus	796	3,380	580	222	420	5,398
Off-Campus	167	323	89	86	101	766
TOTAL	963	3,703	669	308	521	6,164
2007						
On-Campus	772	3,185	598	182	379	5,116
Off-Campus	210	377	116	85	185	973
TOTAL	982	3,562	714	267	564	6,089
2008						
On-Campus	737	3,237	655	131	283	5,043
Off-Campus	268	510	84	32	98	992
TOTAL	1,005	3,747	739	163	381	6,035

SOURCE: Summer Student Census.

**TABLE 2-10**  
**ON-CAMPUS CREDIT HOUR PRODUCTION BY DEPARTMENT,**  
**FALL 2006 - FALL 2008**

DEPARTMENT	2006	2007	2008
College of Arts & Letters			
School of Communication Studies	11,057	11,317	11,546
English	7,782	7,713	7,562
Foreign Lang., Lit. & Cultures	9,225	9,838	10,631
History	10,849	11,679	11,920
Justice Studies	-	-	2,358
Center for Liberal & Applied Social Sciences	1,340	1,997	-
School of Media Arts & Design	3,878	4,115	4,171
Philosophy & Religion	8,397	6,705	7,554
Political Science	8,101	8,223	8,748
Sociology & Anthropology	7,501	6,990	7,960
Technical & Scientific Communication	1,034	907	-
Writing & Rhetoric Studies	5,685	5,610	-
School of Writing, Rhetoric & Tech. Comm.	-	-	6,839
<i>Women's Studies</i>	207	173	222
COLLEGE TOTAL	75,056	75,267	79,511
College of Business			
Accounting	2,145	2,202	2,268
Economics	6,459	6,111	6,213
Finance & Business Law	3,582	3,536	3,594
Hospitality & Tourism Mgt.	919	1,021	1,116
Information Tech. & Mgt. Science	1,185	1,256	1,351
International Business	28	11	9
Management	2,217	2,094	2,459
Marketing	2,304	2,444	2,764
<i>College of Business-BBA Core</i>	18,777	19,573	17,073
<i>General Business-General Education</i>	2,094	2,256	1,995
COLLEGE TOTAL	39,710	40,504	38,842
College of Education			
Education Departments	11,092	11,339	11,551
Military Science	610	664	755
COLLEGE TOTAL	11,702	12,003	12,306

TABLE 2-10 CONTINUED

**ON-CAMPUS CREDIT HOUR PRODUCTION BY DEPARTMENT,  
FALL 2006 - FALL 2008**

DEPARTMENT	2006	2007	2008
College of Integrated Science & Technology			
Communication Sciences & Disorders	2,700	2,802	2,617
Computer Science	1,815	1,718	1,821
Health Sciences	12,455	14,319	15,115
Integrated Science & Technology	8,318	8,196	9,153
Kinesiology	7,369	8,123	8,317
Nursing	2,454	2,906	3,719
Psychology	12,912	12,654	13,409
Psychology, Graduate	1,608	1,482	1,534
Social Work	1,814	1,680	1,808
<i>Health &amp; Human Services</i>	114	104	87
COLLEGE TOTAL	51,559	53,984	57,580
College of Science & Mathematics			
Biology	8,894	8,963	10,026
Chemistry & Biochemistry	5,365	5,772	5,980
Geology & Environmental Science	2,374	2,195	3,811
Mathematics & Statistics	14,614	15,316	15,609
Physics & Astronomy	1,859	2,060	2,752
<i>General Education Science</i>	4,642	4,983	3,602
COLLEGE TOTAL	37,748	39,289	41,780
College of Visual & Performing Arts			
School of Art & Art History	7,007	7,725	7,684
School of Music	10,838	10,977	10,870
School of Theatre & Dance	2,995	2,781	2,799
COLLEGE TOTAL	20,840	21,483	21,353
<i>Adult Degree Program</i>	-	-	443
<i>Biotechnology</i>	-	-	26
<i>Cross Disciplinary Studies</i>	1,113	1,188	981
<i>School of Engineering</i>	-	-	12
<i>General Humanities</i>	4,155	4,455	3,876
<i>Graduate School</i>	27	29	26
<i>Honors</i>	648	444	300
<i>Outreach &amp; Engagement</i>	-	26	-
<i>University Studies</i>	-	468	475
GRAND TOTAL	242,558	249,140	257,511

NOTE: According to department irrespective of department membership of instructor.  
Interdisciplinary courses within and across colleges are shown in *italics*.

SOURCE: Fall Student Course Enrollment Data.

TABLE 2-11

**ON-CAMPUS CREDIT HOUR PRODUCTION BY STUDENT LEVEL,  
FALL 2008**

DEPARTMENT	GENED	LOWER	UPPER	GRAD	NON- DEGREE	TOTAL
College of Arts & Letters						
School of Communication Studies	6,309	1,947	3,284	0	6	11,546
English	4,413	818	2,191	104	36	7,562
Foreign Lang., Lit. & Cultures	0	5,591	4,959	16	65	10,631
History	8,751	681	2,223	256	9	11,920
Justice Studies	0	1,017	1,328	0	13	2,358
School of Media Arts & Design	375	1,031	2,759	0	6	4,171
Philosophy & Religion	5,574	510	1,455	3	12	7,554
Political Science	4,463	1,255	2,775	168	87	8,748
Sociology & Anthropology	4,209	798	2,947	0	6	7,960
School of Writing, Rhetoric & Tech. Comm.	4,938	564	1,186	142	9	6,839
<i>Women's Studies</i>	0	63	159	0	0	222
COLLEGE TOTAL	39,032	14,275	25,266	689	249	79,511
College of Business						
Accounting	0	12	1,672	572	12	2,268
Economics	2,511	1,773	1,893	24	12	6,213
Finance & Business Law	0	51	3,276	243	24	3,594
Hospitality & Tourism Mgt.	0	202	900	0	14	1,116
Information Tech. & Mgt. Science	0	156	1,099	87	9	1,351
International Business	0	0	9	0	0	9
Management	0	21	2,345	57	36	2,459
Marketing	0	12	2,659	69	24	2,764
<i>College of Business-BBA Core</i>	0	10,032	7,035	0	6	17,073
<i>General Business-General Education</i>	1,995	0	0	0	0	1,995
COLLEGE TOTAL	4,506	12,259	20,888	1,052	137	38,842
College of Education						
Education Departments	0	1,369	6,043	3,531	608	11,551
Military Science	0	314	436	0	5	755
COLLEGE TOTAL	0	1,683	6,479	3,531	613	12,306

TABLE 2-11 CONTINUED

ON-CAMPUS CREDIT HOUR PRODUCTION BY STUDENT LEVEL,  
FALL 2008

DEPARTMENT	GENED	LOWER	UPPER	GRAD	NON-DEGREE	TOTAL
College of Integrated Science & Technology						
Communication Sciences & Disorders	0	489	1,208	920	0	2,617
Computer Science	0	728	985	102	6	1,821
Health Sciences	4,434	2,681	7,006	983	11	15,115
Integrated Science & Technology	4,636	1,234	3,115	162	6	9,153
Kinesiology	2,868	1,260	3,555	605	29	8,317
Nursing	0	213	3,246	250	10	3,719
Psychology	7,212	1,396	4,786	0	15	13,409
Psychology, Graduate	0	0	3	1,417	114	1,534
Social Work	0	332	1,470	0	6	1,808
<i>Health &amp; Human Services</i>	0	19	68	0	0	87
COLLEGE TOTAL	19,150	8,352	25,442	4,439	197	57,580
College of Science & Mathematics						
Biology	1,838	3,359	4,335	456	38	10,026
Chemistry & Biochemistry	3,166	1,061	1,720	8	25	5,980
Geology & Environmental Science	1,668	1,006	1,137	0	0	3,811
Mathematics & Statistics	9,711	3,851	2,024	4	19	15,609
Physics & Astronomy	913	919	913	0	7	2,752
<i>General Education Science</i>	3,602	0	0	0	0	3,602
COLLEGE TOTAL	20,898	10,196	10,129	468	89	41,780
College of Visual & Performing Arts						
School of Art & Art History	2,382	1,662	3,534	61	45	7,684
School of Music	3,804	3,587	3,123	330	26	10,870
School of Theatre & Dance	834	847	1,114	2	2	2,799
COLLEGE TOTAL	7,020	6,096	7,771	393	73	21,353
<i>Adult Degree Program</i>	0	244	199	0	0	443
<i>Biotechnology</i>	0	16	10	0	0	26
<i>Cross Disciplinary Studies</i>	870	9	102	0	0	981
<i>School of Engineering</i>	0	12	0	0	0	12
<i>General Humanities</i>	3,876	0	0	0	0	3,876
<i>Graduate School</i>	0	0	1	25	0	26
<i>Honors</i>	0	93	207	0	0	300
<i>University Studies</i>	300	1	174	0	0	475
GRAND TOTAL	95,652	53,236	96,668	10,597	1,358	257,511

NOTE: According to department irrespective of department membership of instructor. Interdisciplinary courses within and across colleges are shown in *italics*.

SOURCE: Fall Student Course Enrollment Data.

TABLE 2-12

**ON-CAMPUS CREDIT HOURS AND FULL-TIME EQUIVALENT STUDENTS  
BY LEVEL, REGULAR SESSION, 1997-98 - 2007-08**

YEAR	LOWER	UPPER	GRADUATE	NON-DEGREE	TOTAL
1997-98					
Credit Hours	207,954	160,235	10,343	4,857	383,389
FTE Students	6,932	5,341	431	173	12,877
1998-99					
Credit Hours	203,201	184,134	10,725	5,110	403,170
FTE Students	6,773	6,138	447	181	13,539
1999-00					
Credit Hours	200,149	192,773	10,077	5,100	408,099
FTE Students	6,672	6,426	420	179	13,697
2000-01					
Credit Hours	205,404	190,195	9,036	6,454	411,089
FTE Students	6,847	6,340	376	231	13,794
2001-02					
Credit Hours	209,828	194,304	9,896	5,874	419,902
FTE Students	6,994	6,477	413	210	14,094
2002-03					
Credit Hours	214,283	200,972	10,263	5,295	430,813
FTE Students	7,143	6,699	428	188	14,458
2003-04					
Credit Hours	214,798	209,232	10,878	4,068	438,976
FTE Students	7,160	6,974	453	145	14,732
2004-05					
Credit Hours	210,930	212,451	15,386	2,911	441,678
FTE Students	7,031	7,082	641	103	14,857
2005-06					
Credit Hours	221,404	218,759	16,267	3,162	459,592
FTE Students	7,380	7,292	678	112	15,462
2006-07					
Credit Hours	233,383	217,599	17,581	2,914	471,477
FTE Students	7,779	7,253	733	104	15,869
2007-08					
Credit Hours	235,563	221,465	19,308	2,131	478,467
FTE Students	7,852	7,382	805	76	16,115

NOTE: Courses audited and employee tuition waivers are not included. Beginning 2007-08, regular session courses taken abroad and all online distance courses are compiled as off-campus.

SOURCE: SCHEV Annual Course Enrollment Data.

TABLE 2-13

**ON-CAMPUS CREDIT HOUR PRODUCTION BY DEPARTMENT,  
SUMMER 2005 - SUMMER 2008**

DEPARTMENT	2005	2006	2007	2008
College of Arts & Letters				
School of Communication Studies	663	510	534	560
English	869	788	680	511
Foreign Lang., Lit. & Cultures	1,862	1,620	1,756	1,334
History	1,131	959	1,130	909
Justice Studies	8	107	68	99
School of Media Arts & Design	343	473	334	406
Philosophy & Religion	519	384	376	309
Political Science	877	854	808	1,112
Sociology & Anthropology	881	710	643	493
School of Writing, Rhetoric & Tech. Comm.	-	-	-	105
Technical & Scientific Communication	45	75	81	-
Writing & Rhetoric Studies	48	-	-	-
<i>Women's Studies</i>	27	5	9	6
COLLEGE TOTAL	7,273	6,485	6,419	5,844
College of Business				
Accounting	212	444	315	236
Economics	528	510	465	591
Finance & Business Law	603	534	609	675
Hospitality & Tourism Mgt.	21	3	18	-
Information Tech. & Mgt. Science	30	60	21	12
International Business	21	129	171	150
Management	264	261	243	132
Marketing	732	636	546	237
<i>College of Business-BBA Core</i>	2,487	2,496	2,457	2,472
<i>General Business-General Education</i>	57	-	-	-
COLLEGE TOTAL	4,955	5,073	4,845	4,505
College of Education				
Education Departments	3,073	3,064	3,015	2,778
Military Science	7	-	-	-
COLLEGE TOTAL	3,080	3,064	3,015	2,778

TABLE 2-13 CONTINUED

ON-CAMPUS CREDIT HOUR PRODUCTION BY DEPARTMENT,  
SUMMER 2005 - SUMMER 2008

DEPARTMENT	2005	2006	2007	2008
College of Science & Mathematics				
Biology	1,095	1,098	1,145	1,000
Chemistry & Biochemistry	572	756	792	854
Geology & Environmental Science	148	326	496	389
Mathematics & Statistics	1,128	1,056	1,007	928
Physics & Astronomy	362	361	373	370
<i>General Education Science</i>	1,261	1,262	828	978
COLLEGE TOTAL	4,566	4,859	4,641	4,519
College of Integrated Science & Technology				
Communication Sciences & Disorders	417	335	337	254
Computer Science	59	65	39	57
Health Sciences	1,335	1,102	1,234	1,421
Integrated Science & Technology	213	312	501	587
Kinesiology	1,629	1,883	1,418	1,485
Nursing	152	298	44	133
Psychology	937	856	793	737
Psychology, Graduate	505	546	536	484
Social Work	21	106	60	98
<i>Health &amp; Human Services</i>	30	69	80	80
COLLEGE TOTAL	5,298	5,572	5,042	5,336
College of Visual & Performing Arts				
School of Art & Art History	1,295	978	750	719
School of Music	293	408	313	302
School of Theatre & Dance	43	122	21	98
COLLEGE TOTAL	1,631	1,508	1,084	1,119
Cross Disciplinary Studies	-	-	9	-
Outreach & Engagement	-	-	363	-
<i>GEIC</i>	-	21	-	15
<i>General Humanities</i>	162	249	261	237
<i>Graduate School</i>	-	1	2	-
GRAND TOTAL	26,965	26,832	25,681	24,353

NOTE: According to department irrespective of department membership of instructor.  
Interdisciplinary courses within and across colleges are shown in *italics*.

SOURCE: Summer Student Course Enrollment Data.

**TABLE 2-14 ON**  
**ON-CAMPUS CREDIT HOUR PRODUCTION BY DEPARTMENT**  
**AND STUDENT LEVEL, SUMMER 2008**

DEPARTMENT	GENED	LOWER	UPPER	GRAD	NON-DEGREE	TOTAL
College of Arts & Letters						
School of Communication Studies	120	75	365	0	0	560
English	318	15	165	7	6	511
Foreign Lang., Lit. & Cultures	0	111	1,155	24	44	1,334
History	516	21	327	21	24	909
Justice Studies	0	8	91	0	0	99
School of Media Arts & Design	0	47	359	0	0	406
Philosophy & Religion	135	21	150	0	3	309
Political Science	310	37	456	222	87	1,112
Sociology & Anthropology	219	24	243	0	7	493
School of Writing, Rhetoric & Tech. Comm.	0	0	36	63	6	105
<i>Women's Studies</i>	0	0	3	0	3	6
COLLEGE TOTAL	1,618	359	3,350	337	180	5,844
College of Business						
Accounting	0	0	160	73	3	236
Economics	159	60	339	3	30	591
Finance & Business Law	0	3	519	147	6	675
Information Tech. & Mgt. Science	0	0	12	0	0	12
International Business	0	12	135	3	0	150
Management	0	0	114	18	0	132
Marketing	0	0	213	24	0	237
<i>College of Business-BBA Core</i>	0	552	1,908	6	6	2,472
COLLEGE TOTAL	159	627	3,400	274	45	4,505
College of Education						
Education Departments	0	46	240	1,769	723	2,778
COLLEGE TOTAL	0	46	240	1,769	723	2,778
College of Science & Mathematics						
Biology	328	124	520	16	12	1,000
Chemistry & Biochemistry	220	72	541	0	21	854
Geology & Environmental Science	213	0	92	0	84	389
Mathematics & Statistics	627	64	196	15	26	928
Physics & Astronomy	193	13	161	0	3	370
<i>General Education Science</i>	978	0	0	0	0	978
COLLEGE TOTAL	2,559	273	1,510	31	146	4,519

**TABLE 2-14 ON CONTINUED**  
**ON-CAMPUS CREDIT HOUR PRODUCTION BY DEPARTMENT**  
**AND STUDENT LEVEL, SUMMER 2008**

DEPARTMENT	GENED	LOWER	UPPER	GRAD	NON-DEGREE	TOTAL
College of Integrated Science & Technology						
Communication Sciences & Disorders	0	0	0	254	0	254
Computer Science	0	0	45	9	3	57
Health Sciences	0	53	789	579	0	1,421
Integrated Science & Technology	9	106	444	22	6	587
Kinesiology	162	79	1,076	126	42	1,485
Nursing	0	30	68	29	6	133
Psychology	288	66	376	0	7	737
Psychology, Graduate	0	0	3	432	49	484
Social Work	0	6	92	0	0	98
<i>Health &amp; Human Services</i>	0	12	68	0	0	80
COLLEGE TOTAL	459	352	2,961	1,451	113	5,336
College of Visual & Performing Arts						
School of Art & Art History	129	72	500	3	15	719
School of Music	3	27	171	36	65	302
School of Theatre & Dance	0	11	76	0	11	98
COLLEGE TOTAL	132	110	747	39	91	1,119
<i>GEIC</i>	15	0	0	0	0	15
<i>General Humanities</i>	237	0	0	0	0	237
GRAND TOTAL	5,179	1,767	12,208	3,901	1,298	24,353

NOTE: According to department irrespective of department membership of instructor.  
 Interdisciplinary courses are shown in *italics*.

SOURCE: Summer Student Course Enrollment Data.

TABLE 2-14 OFF

**OFF-CAMPUS CREDIT HOUR PRODUCTION BY DEPARTMENT  
AND STUDENT LEVEL, SUMMER 2008**

DEPARTMENT	GENED	LOWER	UPPER	GRAD	NON- DEGREE	TOTAL	<i>ONLINE</i>
College of Arts & Letters							
School of Communication Studies	33	87	447	0	3	570	504
English	138	12	93	0	0	243	243
Foreign Lang., Lit. & Cultures	0	81	722	0	22	825	12
History	192	21	45	0	6	264	264
Justice Studies	0	9	30	0	0	39	39
Philosophy & Religion	264	0	0	0	0	264	264
Political Science	0	0	0	6	27	33	0
Sociology & Anthropology	0	0	72	0	3	75	45
School of Writing, Rhetoric & Tech. Comm.	183	24	165	69	3	444	444
Women's Studies	0	18	51	0	0	69	69
COLLEGE TOTAL	810	252	1,625	75	64	2,826	1,884
College of Business							
Economics	0	0	0	48	15	63	63
Finance & Business Law	0	0	0	48	21	69	69
Hospitality & Tourism Mgt.	0	0	42	0	0	42	42
Information Tech. & Mgt. Science	0	0	0	51	0	51	51
Management	0	0	0	48	9	57	57
Marketing	0	6	192	0	6	204	117
<i>College of Business-BBA Core</i>	0	117	138	0	0	255	168
<i>General Business-General Education</i>	216	0	0	0	0	216	216
COLLEGE TOTAL	216	123	372	195	51	957	783
College of Education							
Education Departments	0	50	507	150	263	970	849
COLLEGE TOTAL	0	50	507	150	263	970	849
College of Science & Mathematics							
Biology	0	6	90	0	0	96	60
Mathematics & Statistics	147	0	0	0	0	147	147
<i>General Education Science</i>	31	0	0	0	0	31	31
COLLEGE TOTAL	178	6	90	0	0	274	238

TABLE 2-14 OFF CONTINUED

**OFF-CAMPUS CREDIT HOUR PRODUCTION BY DEPARTMENT  
AND STUDENT LEVEL, SUMMER 2008**

DEPARTMENT	GENED	LOWER	UPPER	GRAD	NON- DEGREE	TOTAL	<i>ONLINE</i>
College of Integrated Science & Technology							
Communication Sciences & Disorders	0	0	0	42	0	42	<i>42</i>
Computer Science	0	0	0	89	18	107	<i>107</i>
Health Sciences	348	138	498	3	9	996	<i>996</i>
Integrated Science & Technology	0	66	114	0	66	246	<i>177</i>
Kinesiology	117	6	93	15	0	231	<i>153</i>
Nursing	0	0	36	0	0	36	<i>36</i>
Psychology	327	36	240	3	12	618	<i>543</i>
COLLEGE TOTAL	792	246	981	152	105	2,276	<i>2,054</i>
College of Visual & Performing Arts							
School of Art & Art History	0	12	90	0	0	102	<i>102</i>
School of Music	0	12	42	0	33	87	<i>87</i>
COLLEGE TOTAL	0	24	132	0	33	189	<i>189</i>
Outreach & Engagement	0	0	0	62	11	73	<i>11</i>
<i>General Humanities</i>	60	0	0	0	0	60	<i>0</i>
GRAND TOTAL	2,056	701	3,707	634	527	7,625	<i>6,008</i>

NOTE: According to department irrespective of department membership of instructor. Interdisciplinary courses are shown in *italics*.

The "*ONLINE*" column indicates the credit hours included in "TOTAL" that were delivered over the web off-campus.

SOURCE: Summer Student Course Enrollment Data.

TABLE 2-15

**ON-CAMPUS CREDIT HOURS AND FULL-TIME EQUIVALENT  
STUDENTS BY LEVEL, SUMMER 1997-98 - SUMMER 2007-08**

FISCAL YEAR	LOWER	UPPER	GRADUATE	NON-DEGREE	TOTAL
1997-98					
Credit Hours	5,990	16,059	1,977	1,924	25,950
FTE Students	200	535	82	74	891
1998-99					
Credit Hours	5,775	18,172	2,262	2,134	28,343
FTE Students	193	606	94	82	975
1999-00					
Credit Hours	5,459	19,158	1,822	1,661	28,100
FTE Students	182	639	76	61	958
2000-01					
Credit Hours	4,949	19,512	1,570	1,604	27,635
FTE Students	165	650	66	59	940
2001-02					
Credit Hours	4,882	20,392	1,649	1,800	28,723
FTE Students	163	680	69	66	978
2002-03					
Credit Hours	4,034	18,306	1,724	1,450	25,514
FTE Students	135	610	72	53	870
2003-04					
Credit Hours	3,667	17,762	2,351	1,536	25,316
FTE Students	122	592	98	55	867
2004-05					
Credit Hours	3,441	18,333	3,620	1,327	26,721
FTE Students	115	611	151	50	927
2005-06					
Credit Hours	3,214	17,451	3,542	2,506	26,713
FTE Students	107	582	147	95	931
2006-07					
Credit Hours	3,145	16,683	4,103	1,867	25,798
FTE Students	105	556	171	73	905
End summer fiscal year split. Begin leading summer of fiscal year.					
2007-08					
Credit Hours	3,198	13,646	3,789	1,754	22,387
FTE Students	107	455	158	69	789

NOTE: Courses audited and employee tuition waivers are not included. Beginning 2007-08, summer courses taken abroad are compiled as off-campus and data is no longer based upon a fiscal year "split" of summer terms. For 2007-08, the full summer 2007 data is used.

SOURCE: SCHEV Annual Course Enrollment Data.

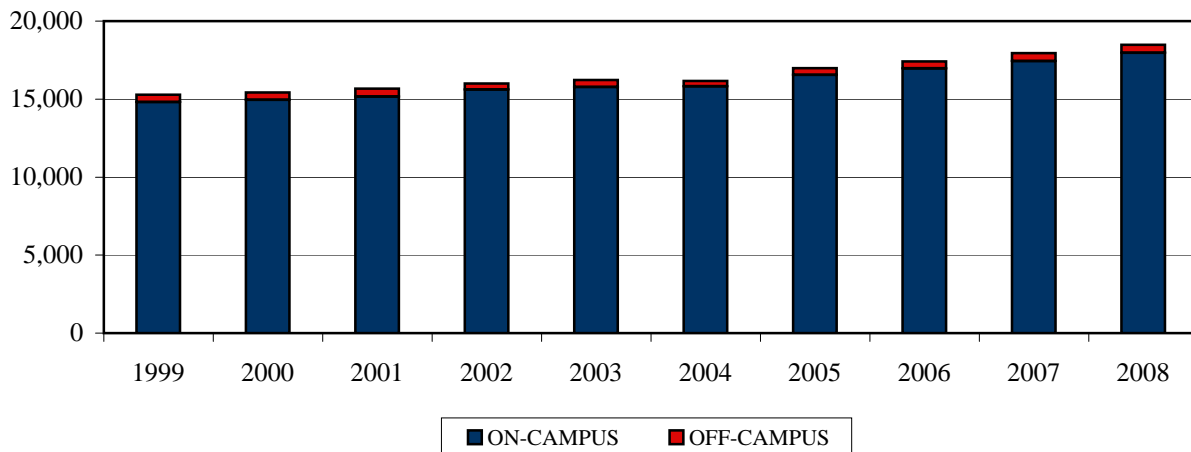
**TABLE 2-16**  
**ON AND OFF-CAMPUS HEADCOUNT,**  
**FALL 1997 - FALL 2008**

FALL SEMESTER	ON-CAMPUS	OFF-CAMPUS	TOTAL
1997	13,714	479	14,193
1998	14,414	596	15,010
1999	14,814	477	15,291
2000	14,961	467	15,428
2001	15,152	514	15,666
2002	15,612	394	16,006
2003	15,769	460	16,229
2004	15,809	351	16,160
2005	16,546	441	16,987
2006	16,970	442	17,412
2007	17,428	523	17,951
2008	17,964	522	18,486

NOTE: On-campus headcount enrollment as reported to the State Council of Higher Education for Virginia as of the fall census date. Off-campus headcount enrollment as reported at the end of the fall semester.

SOURCE: Fall Student Census and Fall Student Course Enrollment Data.

**FIGURE 2-7**  
**TOTAL HEADCOUNT,**  
**FALL 1999 - FALL 2008**



SOURCE: Fall Student Census and Fall Student Course Enrollment Data.

TABLE 2-17

**OFF-CAMPUS CREDIT HOUR PRODUCTION BY  
STUDENT LEVEL, FALL 2008**

DEPARTMENT	LOWER	UPPER	GRAD	NON- DEGREE	TOTAL	<i>ONLINE</i>
College of Arts & Letters						
School of Communication Studies	42	372	0	0	414	366
English	48	189	0	0	237	237
Foreign Lang., Lit. & Cultures	6	123	0	6	135	75
History	59	12	0	43	114	92
Philosophy & Religion	0	0	0	54	54	0
Political Science	0	0	225	12	237	45
School of Writing, Rhetoric & Tech Comm.	27	105	0	0	132	132
COLLEGE TOTAL	182	801	225	115	1,323	947
College of Business						
Economics	0	0	0	12	12	12
Finance & Business Law	0	0	54	21	75	75
Information Tech. & Mgt. Science	0	0	123	0	123	123
COLLEGE TOTAL	0	0	177	33	210	210
College of Education						
Education Departments	21	59	66	543	689	397
COLLEGE TOTAL	21	59	66	543	689	397
College of Integrated Science & Technology						
Communication Sciences & Disorders	0	0	20	0	20	20
Computer Science	0	0	209	0	209	209
Health Sciences	0	0	18	0	18	18
Integrated Science & Technology	0	0	0	73	73	0
Nursing	28	63	69	1	161	161
Psychology	0	0	0	105	105	0
COLLEGE TOTAL	28	63	316	179	586	408

TABLE 2-17 CONTINUED

**OFF-CAMPUS CREDIT HOUR PRODUCTION BY  
STUDENT LEVEL, FALL 2008**

DEPARTMENT	LOWER	UPPER	GRAD	NON- DEGREE	TOTAL	<i>ONLINE</i>
College of Science & Mathematics						
Mathematics & Statistics	3	6	0	0	9	9
Physics & Astronomy	0	0	0	212	212	0
COLLEGE TOTAL	3	6	0	212	221	9
College of Visual & Performing Arts						
School of Art & Art History	9	63	0	3	75	0
School of Music	0	0	3	33	36	36
COLLEGE TOTAL	9	63	3	36	111	36
Adult Degree Program	57	18	0	18	93	93
General Humanities	48	99	0	0	147	147
Outreach & Engagement	0	0	75	116	191	85
GRAND TOTAL	348	1,109	862	1,252	3,571	2,332

NOTE: According to department irrespective of department membership of instructor.

SOURCE: Fall Student Course Enrollment Data.

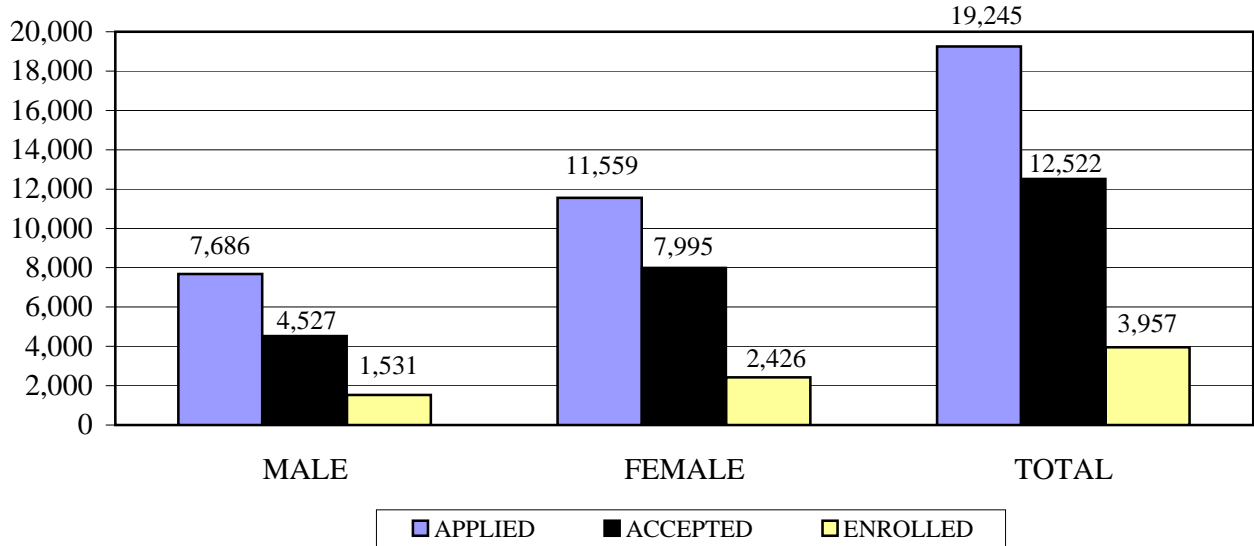
**TABLE 2-18**  
**UNDERGRADUATE ADMISSION APPLICATIONS,**  
**FALL 2004 - FALL 2008**

	2004	2005	2006	2007	2008
Entering Freshman Class					
Male					
Applied	6,092	6,587	7,099	7,325	7,686
Accepted	3,397	3,913	3,863	4,126	4,527
Enrolled	1,170	1,376	1,314	1,465	1,531
Female					
Applied	8,921	9,801	10,666	11,027	11,559
Accepted	6,075	7,181	7,274	7,534	7,995
Enrolled	2,115	2,422	2,434	2,402	2,426
Total					
Applied	15,013	16,388	17,765	18,352	19,245
Accepted	9,472	11,094	11,137	11,660	12,522
Enrolled	3,285	3,798	3,748	3,867	3,957
Transfers					
Male					
Applied	894	1,020	1,034	954	933
Accepted	500	568	582	544	573
Enrolled	314	354	376	335	339
Female					
Applied	849	906	920	907	848
Accepted	539	579	597	583	564
Enrolled	288	285	326	324	312
Total					
Applied	1,743	1,926	1,954	1,861	1,781
Accepted	1,039	1,147	1,179	1,127	1,137
Enrolled	602	639	702	659	651

SOURCE: Fall Admissions Data.

FIGURE 2-8

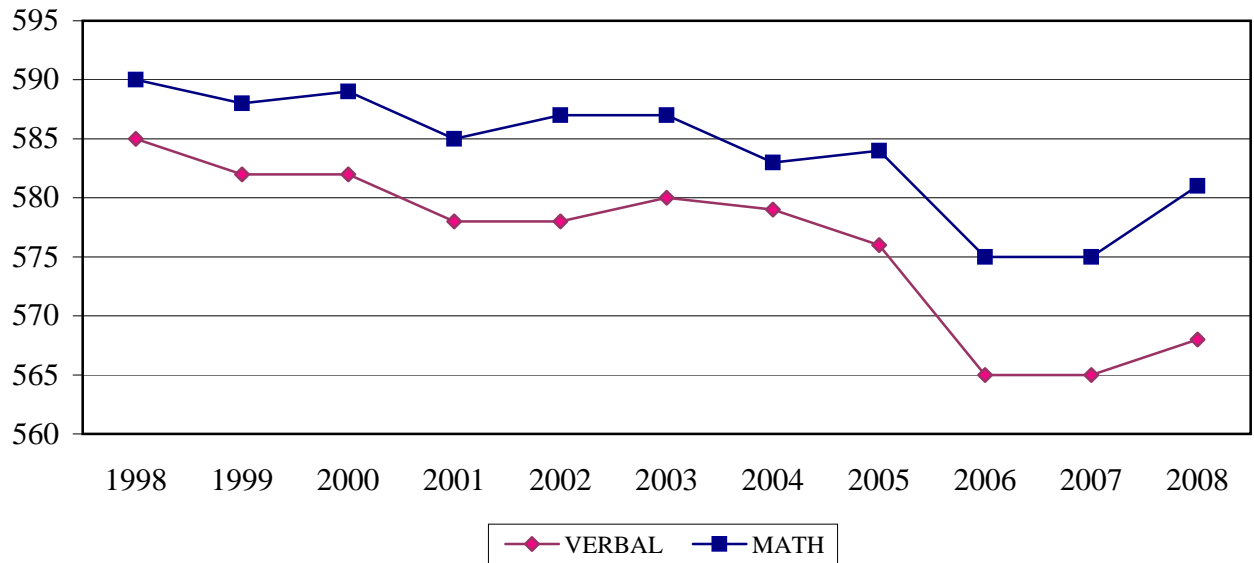
ENTERING FRESHMAN CLASS APPLICATIONS BY SEX, FALL 2008



SOURCE: Fall Admissions Data.

FIGURE 2-9

ENTERING FRESHMAN CLASS AVERAGE SAT SCORES, FALL 1998 - FALL 2008



NOTE: National average SAT scores were 502 Reading, 515 Math, and 1,017 Combined.

SOURCE: Fall Admissions Data.

**TABLE 2-19**  
**ENTERING FRESHMAN CLASS AVERAGE SAT SCORES,**  
**FALL 1990 - FALL 2008**

FALL ENTERED	VERBAL/READING	MATH	COMBINED
1990	587	592	1,179
1991	594	593	1,187
1992	594	593	1,187
1993	595	597	1,192
1994	594	598	1,192
1995	594	592	1,186
1996	585	587	1,172
1997	585	589	1,174
1998	585	590	1,175
1999	582	588	1,170
2000	582	589	1,171
2001	578	585	1,163
2002	578	587	1,165
2003	580	587	1,167
2004	579	583	1,162
2005	576	584	1,160
2006	565	575	1,140
2007	565	575	1,140
2008	568	581	1,148

NOTE: National average scores for fall 2008 were 502 Reading, 515 Math, and 1,017 Reading and Math Combined. Virginia average scores for fall 2008 were 511 Reading, 512 Math, and 1,023 Reading and Math Combined. Scores on this table prior to 1995 are recentered from their original values to be equivalent to scores beginning in 1995. In 2006, the new SAT replaced the Verbal test with Critical Reading and introduced the new Writing test. JMU does not use the Writing score in its admissions criteria and those scores are not published.

SOURCE: Fall Admissions Data.

TABLE 2-20

**ENTERING FRESHMAN CLASS SAT SCORE DISTRIBUTION BY SEX,  
FALL 2008**

SAT RANGE	READING		MATH	
	Male	Female	Male	Female
751-800	12	10	8	3
701-750	53	50	79	25
651-700	143	171	238	145
601-650	303	365	434	440
551-600	407	628	411	720
501-550	331	640	225	622
451-500	175	366	78	298
401-450	54	109	16	83
351-400	9	14	0	22
301-350	1	4	0	1
251-300	1	2	0	0
201-250	0	0	0	0
151-200	0	0	0	0
<b>AVERAGE SCORES</b>	<b>577</b>	<b>561</b>	<b>606</b>	<b>565</b>

NOTE: The total entering class had 1,531 males and 2,426 females. Forty-two males and 67 females had no SAT scores.

SOURCE: Fall Admissions Data.

**TABLE 2-21**  
**GRADE DISTRIBUTION BY COLLEGE AND COURSE LEVEL,**  
**FALL 2008**

	A, A-	B+, B, B-	C+, C, C-	D+, D, D-	F
College of Arts & Letters					
Lower	32.4%	45.4%	17.0%	3.5%	1.7%
Upper	47.0%	39.8%	10.4%	1.6%	1.3%
Graduate	67.2%	30.3%	1.3%	0.0%	1.3%
College of Business					
Lower	22.7%	42.9%	24.0%	6.8%	3.6%
Upper	25.3%	51.3%	18.9%	2.7%	1.8%
Graduate	52.1%	44.6%	3.3%	0.0%	0.0%
College of Education					
Lower	85.6%	11.0%	2.3%	0.4%	0.6%
Upper	84.5%	12.8%	1.9%	0.3%	0.6%
Graduate	89.1%	10.3%	0.5%	0.0%	0.1%
College of Integrated Science & Technology					
Lower	34.3%	44.1%	17.3%	3.0%	1.4%
Upper	55.3%	33.7%	8.4%	1.5%	1.1%
Graduate	75.8%	21.9%	1.9%	0.0%	0.4%
College of Science & Mathematics					
Lower	26.6%	35.9%	25.1%	7.9%	4.6%
Upper	36.5%	32.8%	23.4%	4.0%	3.3%
Graduate	52.3%	40.5%	7.2%	0.0%	0.0%
College of Visual & Performing Arts					
Lower	54.4%	32.5%	9.2%	2.3%	1.6%
Upper	65.2%	24.4%	7.6%	1.4%	1.4%
Graduate	83.2%	16.8%	0.0%	0.0%	0.0%
Total University					
Lower	33.4%	41.0%	18.5%	4.6%	2.5%
Upper	48.9%	36.2%	11.6%	1.9%	1.4%
Graduate	76.5%	21.6%	1.6%	0.0%	0.3%

NOTE: Totals may not add to 100 due to rounding. Does not include incompletes, withdrawals, audits, and courses taken on a credit/no credit basis.

SOURCE: Fall Student Course Enrollment Data.

TABLE 2-22

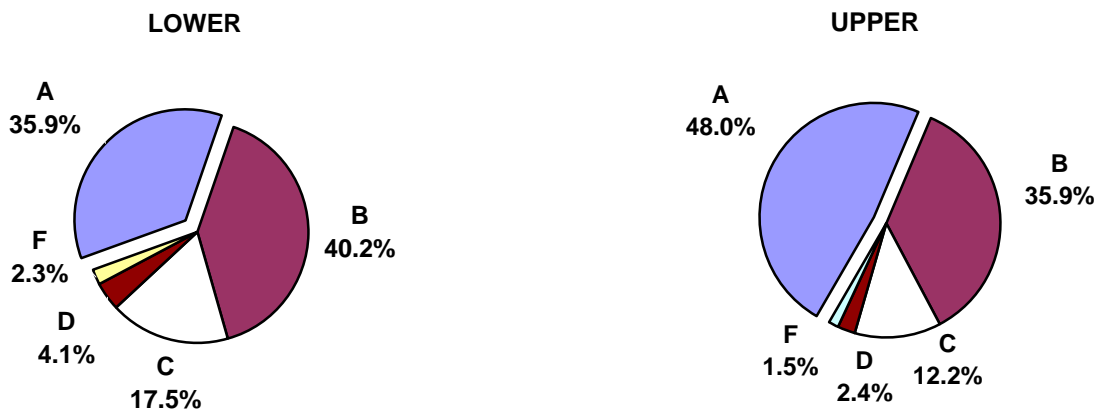
UNDERGRADUATE MEDIAN CUMULATIVE GRADE POINT AVERAGES BY SEX,  
END OF SPRING IN ALTERNATE YEARS, 1990-91 - 2006-07

YEAR	MALE	FEMALE	OVERALL
1990-91	2.73	2.99	2.87
1992-93	2.74	3.00	2.89
1994-95	2.72	3.02	2.89
1996-97	2.74	3.00	2.89
1998-99	2.76	3.01	2.91
2000-01	2.76	3.05	2.94
2002-03	2.82	3.08	2.99
2004-05	2.88	3.10	3.02
2006-07	2.91	3.11	3.03

SOURCE: Internal Statistical Report.

FIGURE 2-10

UNDERGRADUATE GRADE DISTRIBUTION,  
FALL 2008



NOTE: Does not include graduate grades.

SOURCE: Fall Student Course Enrollment Data. See Table 2-21 for more detail.

**TABLE 2-23**  
**HEADCOUNT BY GRADUATE STUDENT LEVELS,**  
**FALL 2008**

	FULL-TIME	PART-TIME	TOTAL
<b>ON-CAMPUS</b>			
Master's	785	238	1,023
Educational Specialist	12	17	29
Doctoral	70	14	84
Non-degree Seeking Graduate	6	96	102
TOTAL	873	365	1,238
<b>OFF-CAMPUS</b>			
Master's	16	85	101
Doctoral	4	0	4
Non-degree Seeking Graduate	0	195	195
TOTAL	20	280	300
<b>ON AND OFF-CAMPUS</b>			
Master's	801	323	1,124
Educational Specialist	12	17	29
Doctoral	74	14	88
Non-degree Seeking Graduate	6	291	297
GRAND TOTAL	893	645	1,538

NOTE: "Non-degree Seeking" is synonymous with "Special" or "Unclassified."

SOURCE: Fall Student Census.

**TABLE 2-24**  
**FULL-TIME EQUIVALENT STUDENTS BY SESSION,**  
**1983-84 - 2007-08**

YEAR	REGULAR SESSION	SUMMER SESSION	OFF- CAMPUS	TOTAL
1983-84	8,900	675	188	9,763
1984-85	8,992	691	175	9,858
1985-86	9,105	692	155	9,952
1986-87	9,297	676	175	10,148
1987-88	9,617	677	143	10,437
1988-89	10,123	678	158	10,959
1989-90	10,366	694	146	11,206
1990-91	10,423	687	112	11,222
1991-92	10,620	700	153	11,473
1992-93	10,720	758	109	11,587
1993-94	10,711	724	124	11,559
1994-95	10,869	765	158	11,792
1995-96	11,087	771	113	11,971
1996-97	12,119	825	107	13,051
1997-98	12,877	891	153	13,921
1998-99	13,539	975	189	14,703
1999-00	13,697	959	172	14,828
2000-01	13,794	940	173	14,907
2001-02	14,094	978	163	15,235
2002-03	14,457	870	160	15,487
2003-04	14,732	867	178	15,777
2004-05	14,857	927	205	15,989
2005-06	15,462	931	304	16,697
2006-07	15,869	905	328	17,102
2007-08	16,115	789	743	17,647

NOTE: Courses audited and employee tuition waivers are not included. Beginning Summer 2007, courses taken abroad are compiled as off-campus and on-line courses are compiled as off-campus. Beginning 2008, data is no longer based upon a fiscal year "split" of summer terms. The leading summer, i.e., Summer 2007 for 2007-08, is used.

SOURCE: SCHEV Annual Course Enrollment Data.

TABLE 2-25

**GRADUATION RATES FOR FALL ENTERING FRESHMAN CLASS,  
1983 - 2004**

FALL ENTERED	ENROLLED	PERCENT GRADUATED		
		FOUR YEARS	FIVE YEARS	SIX YEARS
1983	1,682	55%	73%	76%
1984	1,626	57%	77%	79%
1985	1,769	59%	78%	81%
1986	1,897	61%	80%	82%
1987	1,957	59%	78%	81%
1988	2,034	60%	80%	82%
1989	1,923	58%	79%	82%
1990	1,912	58%	80%	81%
1991	2,123	60%	79%	81%
1992	2,042	62%	79%	80%
1993	2,082	60%	77%	79%
1994	2,290	58%	78%	80%
1995	2,539	59%	78%	80%
1996	3,258	59%	76%	78%
1997	3,062	60%	77%	80%
1998	2,973	61%	78%	80%
1999	3,039	62%	77%	80%
2000	3,226	63%	78%	80%
2001	3,249	64%	79%	81%
2002	3,283	67%	80%	82%
2003	3,388	64%	79%	N/A
2004	3,285	67%	NA	N/A

NOTE: As reported to the Federal Government for the Student-Right-to-Know legislation.

SOURCE: Internal Statistical Reports (1983-1991), Fall Admissions Data and Annual Degrees Conferred Data (1992-Present).

**TABLE 2-26**  
**RETURN RATES FOR FALL ENTERING FRESHMAN CLASS,**  
**1989 - 2007**

FALL ENTERED	ENROLLED	PERCENT RETURNING AFTER		
		ONE YEAR	TWO YEARS	THREE YEARS
1989	1,923	93.5%	88.2%	86.3%
1990	1,912	93.0%	86.4%	84.7%
1991	2,123	92.6%	86.9%	83.2%
1992	2,042	91.7%	86.0%	83.9%
1993	2,082	91.8%	84.6%	82.3%
1994	2,290	91.8%	85.7%	83.1%
1995	2,539	90.2%	84.9%	83.2%
1996	3,258	90.1%	83.9%	81.8%
1997	3,062	91.1%	84.4%	83.2%
1998	2,973	90.4%	84.5%	82.9%
1999	3,039	90.5%	84.8%	82.8%
2000	3,226	90.1%	84.5%	82.9%
2001	3,249	91.8%	85.9%	84.1%
2002	3,283	92.0%	86.1%	85.2%
2003	3,388	91.5%	85.7%	84.0%
2004	3,285	90.9%	85.9%	84.3%
2005	3,798	91.8%	86.0%	84.2%
2006	3,748	90.8%	84.3%	N/A
2007	3,867	91.4%	N/A	N/A

SOURCE: Internal Statistical Reports (1989-1991), Fall Admissions Data and Fall Student Census (1992-Present).

TABLE 2-27

**NON-RESIDENT ALIEN HEADCOUNT BY COUNTRY  
AND ACADEMIC LEVEL, FALL 2008**

COUNTRY	UNDERGRADUATE	GRADUATE	NON-DEGREE SEEKING	TOTAL
Afghanistan	2	0	0	2
Australia	1	0	3	4
Bangladesh	1	0	0	1
Benin	1	0	0	1
Bermuda	2	0	0	2
Bolivia	1	0	0	1
Brazil	2	0	0	2
Bulgaria	3	2	0	5
Burkina Faso	1	0	0	1
Canada	6	1	0	7
Chile	0	1	0	1
China	15	0	0	15
Colombia	2	1	0	3
Costa Rica	0	1	0	1
Dominican Republic	0	1	0	1
Egypt	0	0	3	3
Ethiopia	2	0	0	2
Finland	3	1	0	4
France	1	1	0	2
Georgia	1	0	0	1
Germany	2	0	0	2
Ghana	1	0	0	1
Guatemala	1	0	0	1
Haiti	1	0	1	2
Honduras	1	0	0	1
India	8	3	0	11
Indonesia	1	0	0	1
Iraq	0	3	0	3
Israel	2	0	0	2
Jamaica	1	0	0	1
Japan	3	0	0	3
Kazakstan	14	1	0	15
Kenya	1	0	0	1
Korea, Republic of	20	1	2	23
Kuwait	2	0	0	2
Luxembourg	1	0	0	1

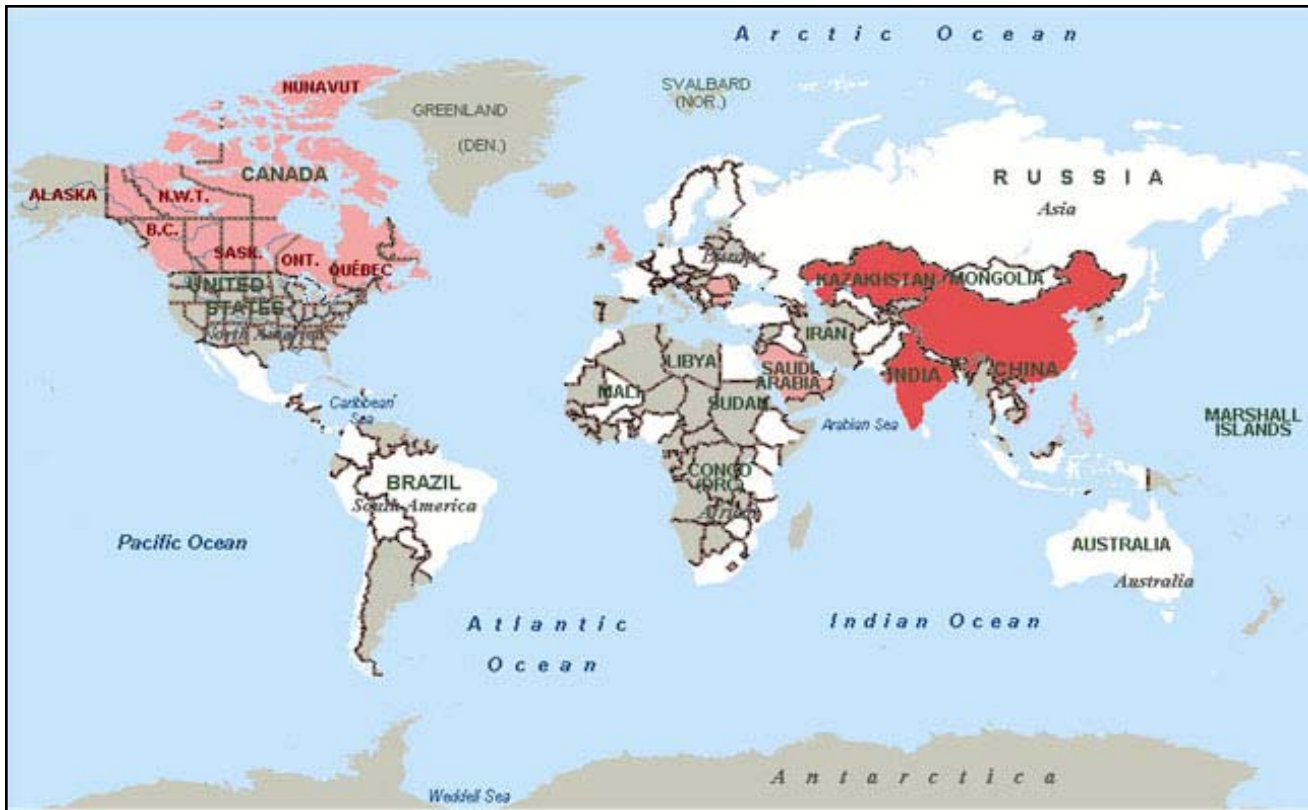
TABLE 2-27 CONTINUED

**NON-RESIDENT ALIEN HEADCOUNT BY COUNTRY  
AND ACADEMIC LEVEL, FALL 2008**

COUNTRY	UNDERGRADUATE	GRADUATE	NON-DEGREE SEEKING	TOTAL
Mali	1	0	0	1
Mexico	4	0	0	4
Mongolia	1	1	0	2
Morocco	1	0	0	1
Mozambique	1	0	0	1
Nepal	1	0	0	1
Netherlands	3	0	0	3
Nigeria	1	1	0	2
Norway	2	0	0	2
Pakistan	3	0	0	3
Panama	3	0	0	3
Paraguay	1	0	0	1
Peru	2	0	0	2
Philippines	5	1	0	6
Poland	0	1	0	1
Romania	0	4	5	9
Russian Federation	2	0	0	2
Saudi Arabia	5	1	0	6
Singapore	0	2	0	2
South Africa	2	0	0	2
Sri Lanka	0	1	0	1
Sweden	2	0	0	2
Taiwan, Province of China	3	0	0	3
Tanzania, United Republic of	1	0	0	1
Thailand	1	1	0	2
Trinidad and Tobago	2	0	0	2
Turkey	1	1	0	2
Ukraine	1	0	0	1
United Arab Emirates	0	0	1	1
United Kingdom	8	1	0	9
Uzbekistan	1	0	0	1
Vietnam	5	0	0	5
Yugoslavia	4	0	0	4
Zimbabwe	2	0	1	3
TOTAL	172	32	16	220

SOURCE: Fall Student Census and Student Administration System Data.

**FIGURE 2-11**  
**NON-RESIDENT ALIENS BY COUNTRY,**  
**FALL 2008**



**Total Students**

- 10 to 17
- 5 to 9
- 1 to 4

SOURCE: Fall Student Census and Student Administration System Data.

# Academic Departments and Degree Programs



TABLE 3-1

**DEGREE PROGRAMS APPROVED BY THE  
STATE COUNCIL OF HIGHER EDUCATION, 2008-09**

CIP CODE	DISCIPLINE	UNDER- GRADUATE	START YEAR	GRADUATE	START YEAR
09.0101	Communications	B.A., B.S.	1967		
11.0101	Computer Science	B.S.	1980	M.S.	1986
11.0401	Computer Information Systems	B.B.A.	1976		
13.0101	Education			M.Ed., M.A.T.	1997
13.1001	Special Education			M.Ed.	1973
13.1101	Counselor Education			M.Ed.	1969
				M.A.	1999
13.1201	Adult Education/Human Res. Dev.			M.S.Ed.	-
13.1307	Health Education			M.S., M.S.Ed.	1977
13.1311	Mathematics			M.Ed.	2004
13.9999	Counselor Education			Ed.S.	1981
13.9999	School Psychology			Ed.S.	1981
14.0101	Engineering	B.S.	2008		
16.0101	Modern Foreign Languages	B.A.	1989		
19.0501	Dietetics	B.S.	-		
22.0201	Justice Studies	B.A., B.S.	2004		
23.0101	English	B.A.	-	M.A.	1967
23.1101	Technical & Scientific Communication	B.A., B.S.	1997	M.A., M.S.	1997
24.0101	Individualized Study	B.A., B.I.S., B.S.	1977		
26.0101	Biology	B.A., B.S.	-	M.S.	1960
26.1201	Biotechnology	B.S.	2005		
27.0101	Mathematics	B.A., B.S.	-		
27.0101	Statistics	B.S.	2004		
30.0601	Information Analysis	B.S.	2007		
30.1501	Integrated Science & Technology	B.S.	1993	M.S.	1999
30.9999	Strategic Leadership Studies			Ph.D.	2009
31.0501	Kinesiology	B.S.	-	M.S.	1975
38.9999	Philosophy & Religion	B.A.	1971		
40.0501	Chemistry	B.A., B.S.	-		
40.0601	Geology	B.A., B.S.	-		
40.0801	Physics	B.A., B.S.	-		
42.0101	Psychology	B.A., B.S.	-	M.A.	1976
42.0101	Combined-Integrated Psychology			Psy.D.	1995
				Ph.D.	2004
42.1701	School Psychology			M.A.	1969
42.1901	Assessment & Measurement			Ph.D.	2004
44.0401	Public Administration	B.S.	1977	M.P.A.	1982
44.0701	Social Work	B.S.W.	1977		
45.0101	Interdisciplinary Social Science	B.A., B.S.	-		
45.0201	Anthropology	B.A., B.S.	1979		

TABLE 3-1 CONTINUED

**DEGREE PROGRAMS APPROVED BY THE  
STATE COUNCIL OF HIGHER EDUCATION, 2008-09**

CIP CODE	DISCIPLINE	UNDER- GRADUATE	START YEAR	GRADUATE	START YEAR
45.0601	Economics	B.A., B.S.	-		
45.0701	Geographic Science	B.A., B.S.	1973		
45.0901	International Affairs	B.A.	1990		
45.1001	Political Science	B.A.	-	M.A.	2007
45.1101	Sociology	B.A., B.S.	-		
50.0501	Theatre	B.A.	1985		
50.0701	Art	B.A., B.F.A., B.S.	1975	M.A., M.F.A.	1980
50.0703	Art History	B.A.	1979		
50.0903	Music	B.M.	1975	M.M.	1981
50.0912	Music Performance, Pedagogy & Lit.			D.M.A.	2007
51.0202	Audiology			Au.D.	2005
51.0203	Communication Sciences & Disorders	B.A., B.S.	1968	M.S. Ph.D.	1975 2002
51.0701	Health Services Administration	B.S.	2004		
51.0912	Physician Assistant Studies			M.P.A.S.	2003
51.0913	Athletic Training	B.S.	2004		
51.1504	Health Sciences	B.S.	1977		
51.1601	Nursing	B.S.N.	1980		
51.1603	Nursing			M.S.N.	2004
51.2306	Occupational Therapy			M.O.T.	2005
52.0201	Business Mgt./Administration	B.B.A.	1967	M.B.A.	1970
52.0301	Accounting	B.B.A.	1974	M.S.	1978
52.0601	Economics (Business)	B.B.A.	1980		
52.0801	Finance	B.B.A.	1977		
52.0899	Quantitative Finance	B.S.	1995		
52.0901	Hospitality & Tourism Management	B.B.A.	1974		
52.1101	International Business	B.B.A.	1979		
52.1401	Marketing	B.B.A.	1967		
54.0101	History	B.A.	-	M.A.	1968

NOTE: The CIP Codes reflect the 2000 taxonomy. This table lists only disciplines that are currently open to entering class and transfer students.

SOURCE: SCHEV Institutional Information Data.

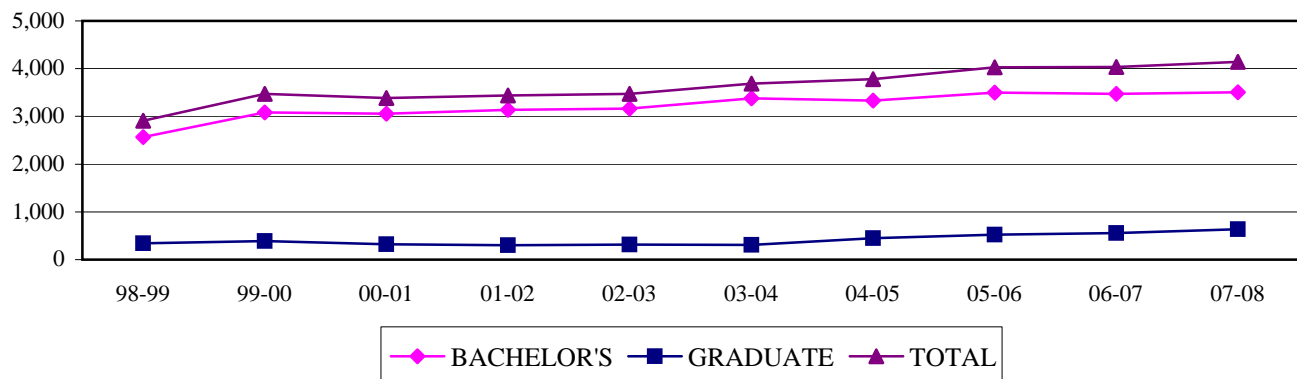
**TABLE 3-2**  
**DEGREES CONFERRED TOTALS, 1993-94 - 2007-08**

YEAR	BACHELOR'S	GRADUATE	TOTAL
1993-94	2,294	332	2,626
1994-95	2,343	342	2,685
1995-96	2,302	364	2,666
1996-97	2,196	375	2,571
1997-98	2,394	344	2,738
1998-99	2,565	341	2,906
1999-00	3,082	390	3,472
2000-01	3,059	325	3,384
2001-02	3,134	301	3,435
2002-03	3,162	312	3,474
2003-04	3,378	307	3,685
2004-05	3,329	449	3,778
2005-06	3,501	526	4,027
2006-07	3,475	559	4,034
2007-08	3,504	639	4,143

NOTE: Period July 1 through June 30.

SOURCE: Annual Degrees Conferred Data.

**FIGURE 3-1**  
**DEGREES CONFERRED,**  
**1998-99 - 2007-08**



NOTE: "Graduate" includes Master's, Ed.S. and Doctoral Degrees.

SOURCE: Annual Degrees Conferred Data.

TABLE 3-3

**BACHELOR'S DEGREES CONFERRED BY FIRST MAJOR  
AND CIP CODE, 2004-05 - 2007-08**

CIP CODE	MAJOR	2004-05	2005-06	2006-07	2007-08
52.0301	Accounting	95	104	119	126
45.0201	Anthropology	29	43	31	44
50.0701	Art	127	147	113	103
50.0703	Art History	16	22	15	10
51.0913	Athletic Training	4	16	15	16
26.0101	Biology	96	118	137	131
26.1201	Biotechnology	-	1	2	4
13.1303	Business & Marketing Education	3	3	-	-
40.0501	Chemistry	22	28	36	21
51.0203	Communication Sciences & Disorders	67	74	56	66
09.0101	Communication Studies	89	142	117	130
11.0401	Computer Information Systems	75	46	35	55
11.0101	Computer Science	70	61	52	47
19.0501	Dietetics	21	22	30	21
40.0601	Earth Science	-	-	-	1
45.0601	Economics	32	35	31	33
52.0601	Economics (Business)	21	16	15	19
23.0101	English	140	161	153	150
52.0801	Finance	161	210	198	204
45.0701	Geographic Science	41	30	50	42
40.0601	Geology	17	11	19	16
51.1504	Health Sciences	176	175	180	199
51.0701	Health Services Administration	8	25	36	24
54.0101	History	91	86	85	84
52.0901	Hospitality & Tourism Management	61	64	52	75
24.0101	Individualized Study	27	17	26	22
30.1501	Integrated Science & Technology	136	115	76	64
24.0101	Interdisciplinary Liberal Studies	159	151	162	198
45.0101	Interdisciplinary Social Science	48	53	47	37
45.0901	International Affairs	62	55	58	45
52.1101	International Business	31	48	70	51
22.0201	Justice Studies	-	-	24	49
31.0501	Kinesiology	124	144	187	179
52.0201	Management	88	123	126	131
52.1401	Marketing	213	168	158	191

TABLE 3-3 CONTINUED

**BACHELOR'S DEGREES CONFERRED BY FIRST MAJOR  
AND CIP CODE, 2004-05 - 2007-08**

CIP CODE	MAJOR	2004-05	2005-06	2006-07	2007-08
27.0101	Mathematics	17	40	22	32
09.0101	Media Arts & Design	179	143	164	165
16.0101	Modern Foreign Languages	35	28	41	52
50.0903	Music	57	53	59	70
51.1601	Nursing	53	59	73	64
52.0201	Operations Management	4	0	-	-
38.9999	Philosophy & Religion	27	38	39	34
40.0801	Physics	16	13	17	16
45.1001	Political Science	110	117	83	90
42.0101	Psychology	237	242	205	196
44.0401	Public Administration	49	44	43	29
52.0899	Quantitative Finance	11	19	12	18
31.0501	Recreation	14	24	6	1
44.0701	Social Work	37	39	56	39
45.1101	Sociology	72	68	63	44
27.0101	Statistics	2	1	2	3
23.1101	Technical & Scientific Communication	25	21	43	30
50.0501	Theatre & Dance	34	38	36	33
	<b>TOTAL</b>	<b>3,329</b>	<b>3,501</b>	<b>3,475</b>	<b>3,504</b>

SOURCE: Annual Degrees Conferred Data.

TABLE 3-4

**BACHELOR'S DEGREES CONFERRED BY SECOND MAJOR  
AND CIP CODE, 2007-08**

CIP CODE	MAJOR	NUMBER	CIP CODE	MAJOR	NUMBER
52.0301	Accounting	6	45.0901	International Affairs	2
45.0201	Anthropology	6	52.1101	International Business	2
50.0701	Art	3	22.0201	Justice Studies	7
50.0703	Art History	5	31.0501	Kinesiology	2
26.0101	Biology	3	52.0201	Management	3
26.1201	Biotechnology	4	52.1401	Marketing	7
40.0501	Chemistry	2	27.0101	Mathematics	4
09.0101	Communication Sciences & Disorders	1	9.0101	Media Arts & Design	11
09.0101	Communication Studies	4	16.0101	Modern Foreign Languages	46
11.0401	Computer Information Systems	3	38.9999	Philosophy & Religion	4
11.0101	Computer Science	1	45.1001	Political Science	11
45.0601	Economics	22	42.0101	Psychology	10
23.0101	English	13	44.0401	Public Administration	5
52.0801	Finance	26	23.1101	Technical & Scientific Communication	3
45.0701	Geographic Science	2			
51.1504	Health Sciences	1			
54.0101	History	4			
52.0901	Hospitality & Tourism Management	3			
24.0101	Interdisciplinary Liberal Studies	1			
				TOTAL	227

NOTE: As reported to the State Council of Higher Education.

SOURCE: Annual Degrees Conferred Data.

TABLE 3-5

**GRADUATE DEGREES CONFERRED BY MAJOR  
AND CIP CODE, 2004-05 - 2007-08**

CIP CODE	MAJOR	2004-05	2005-06	2006-07	2007-08
52.0301	Accounting	16	22	57	52
13.1201	Adult Education/Human Resource Devel.	13	9	7	7
50.0701	Art	1	7	8	3
42.1901	Assessment & Measurement (Ph.D.)	2	3	3	1
51.0202	Audiology (Au.D.)	-	-	9	3
26.0101	Biology	5	7	5	6
52.0201	Business Administration	42	46	29	58
42.0101	Combined-Integrated Psychology (Psy.D./Ph.D.)	7	0	2	9
51.0203	Communication Sciences & Disorders (Ph.D.)	10	7	3	-
11.0101	Computer Science	24	21	23	26
13.1101	Counseling Psychology	31	27	28	26
13.9999	Counseling Psychology (Ed.S.)	23	13	16	16
13.0101	Education	100	158	152	178
23.0101	English	9	7	5	15
13.1001	Exceptional Education	-	-	-	46
13.1307	Health Education	6	16	12	17
51.0202	Hearing Disorders	1	0	-	-
54.0101	History	12	5	13	7
30.1501	Integrated Science & Technology	4	4	5	8
31.0501	Kinesiology	28	45	43	40
13.1311	Mathematics	-	-	1	2
50.0903	Music	11	2	11	10
51.1603	Nursing	-	4	7	5
51.2306	Occupational Therapy	-	-	-	16
51.0912	Physician Assistant Studies	-	13	21	17
42.0101	Psychological Sciences	10	8	5	6
44.0401	Public Administration	10	8	5	9
42.1701	School Psychology	6	11	10	11
13.9999	School Psychology (Ed.S.)	9	5	5	9
13.1001	Special Education	37	49	50	-
51.0203	Speech Pathology	22	26	17	31
23.1101	Technical & Scientific Communication	10	3	7	5
	<b>TOTAL</b>	<b>449</b>	<b>526</b>	<b>559</b>	<b>639</b>

SOURCE: Annual Degrees Conferred Data.

TABLE 3-6

**DEGREES CONFERRED HISTORY BY DEGREE LEVEL,  
1909 - 2008**

YEAR	BACHELOR'S	MASTER'S	ED.S.	DOCTORATE	TOTAL GRADUATE	GRAND TOTAL
1909-1953	8,450					8,450
1954	208					208
1955	203					203
1956	192	9			9	201
1957	180	10			10	190
1958	225	16			16	241
1959	233	36			36	269
1960	244	38			38	282
1961	218	21			21	239
1962	233	35			35	268
1963	264	46			46	310
1964	337	41			41	378
1965	375	30			30	405
1966	359	37			37	396
1967	306	52			52	358
1968	410	50			50	460
1968-69	598	50			50	648
1969-70	616	74			74	690
1970-71	701	75			75	776
1971-72	832	98			98	930
1972-73	843	131			131	974
1973-74	1,001	123			123	1,124
1974-75	1,018	198			198	1,216
1975-76	1,363	174			174	1,537
1976-77	1,428	226			226	1,654
1977-78	1,560	283			283	1,843
1978-79	1,509	304			304	1,813
1979-80	1,524	258			258	1,782
1980-81	1,544	323			323	1,867
1981-82	1,742	291	5		296	2,038
1982-83	1,802	261	13		274	2,076
1983-84	1,841	243	9		252	2,093
1984-85	1,772	278	25		303	2,075

TABLE 3-6 CONTINUED

DEGREES CONFERRED HISTORY BY DEGREE LEVEL,  
1909 - 2008

YEAR	BACHELOR'S	MASTER'S	ED.S.	DOCTORATE	TOTAL GRADUATE	GRAND TOTAL
1985-86	1,872	222	25		247	2,119
1986-87	1,932	190	30		220	2,152
1987-88	1,922	229	12		241	2,163
1988-89	2,029	214	21		235	2,264
1989-90	2,045	255	19		274	2,319
1990-91	2,256	247	11		258	2,514
1991-92	2,297	270	17		287	2,584
1992-93	2,187	263	32		295	2,482
1993-94	2,294	316	16		332	2,626
1994-95	2,343	315	27		342	2,685
1995-96	2,302	329	35		364	2,666
1996-97	2,196	346	26	3	375	2,571
1997-98	2,394	314	27	3	344	2,738
1998-99	2,565	328	13	0	341	2,906
1999-00	3,082	367	19	4	390	3,472
2000-01	3,059	298	18	9	325	3,384
2001-02	3,134	276	21	4	301	3,435
2002-03	3,162	289	14	9	312	3,474
2003-04	3,378	272	23	12	307	3,685
2004-05	3,329	398	32	19	449	3,778
2005-06	3,501	498	18	10	526	4,027
2006-07	3,475	521	21	17	559	4,034
2007-08	3,504	601	25	13	639	4,143
TOTAL	94,389	11,169	554	103	11,826	106,215

SOURCE: Annual Degrees Conferred Data.

TABLE 3-7

**EDUCATION STUDENTS COMPLETING ENDORSEMENTS  
FOR THE COLLEGIATE PROFESSIONAL, POST GRADUATE PROFESSIONAL,  
OR ADVANCED LICENSE,  
2007-08**

ENDORSEMENTS	JMU GRAD	OTHER	TOTAL
<b>COLLEGIATE PROFESSIONAL</b>			
Early & Elementary Education			
Early Childhood, PreK-3	50	0	50
Elementary Education, PreK-6	0	0	0
NK-12 Programs			
Art	12	0	12
Music	33	0	33
Additional Endorsements			
Algebra	1	0	1
Driver Education	0	0	0
English as a Second Language	0	0	0
Journalism	0	0	0
Speech Communication	0	0	0
Theatre Arts	0	0	0
<b>TOTAL COLLEGIATE PROFESSIONAL</b>	<b>96</b>	<b>0</b>	<b>96</b>
<b>POST GRADUATE PROFESSIONAL</b>			
Early & Elementary Education			
Early Childhood, PreK-3	6	0	6
Elementary Education, PreK-6	66	6	72
Elementary Education, 4-6	0	0	0
Middle Education, 6-8			
English & Mathematics, 6-8	0	0	0
English & Science, 6-8	0	0	0
English & Social Studies, 6-8	7	0	7
Mathematics & Science, 6-8	11	0	11
Secondary Education			
Biology	3	0	3
Chemistry	3	0	3
Earth Science	1	0	1
English	21	0	21
French	1	0	1
German	1	0	1
History & Social Science	24	0	24
Mathematics	3	0	3
Physics	0	0	0
Spanish	1	0	1
Technology Education	0	0	0
PreK-12 Programs			
Health & Physical Education	12	0	12
Special Education, K-12			
Early Childhood Special Education	8	0	8
Emotionally Dis., Learning Dis., & Mental Ret.	22	8	30
Learning Disabilities	0	0	0
Mental Retardation	0	0	0
Speech-Language Disorders	0	0	0

TABLE 3-7 CONTINUED

**EDUCATION STUDENTS COMPLETING ENDORSEMENTS  
FOR THE COLLEGIATE PROFESSIONAL, POST GRADUATE PROFESSIONAL,  
OR ADVANCED LICENSE,  
2007-08**

ENDORSEMENTS	JMU GRAD	OTHER	TOTAL
Additional Endorsements			
Algebra	8	0	8
Driver Education	0	0	0
English as a Second Language	0	0	0
Gifted Education	3	0	3
Journalism	1	0	1
Speech Communication	0	0	0
Theatre Arts	2	0	2
TOTAL POST GRADUATE PROFESSIONAL	204	14	218
ADVANCED			
Early & Middle Education			
Early Childhood	0	0	0
Elementary Education	0	0	0
Middle Education	0	0	0
Health Education	0	0	0
Music Education	0	0	0
Secondary Education	0	0	0
Special Education			
Early Childhood Special Education	0	0	0
Emotionally Dis., Learning Dis., & Mental Ret.	0	0	0
Learning Disabilities & Emotionally Disturbed	0	0	0
Speech/Language Disorders	0	0	0
School Services			
School Administration, PreK-12	2	0	2
School Counselor	5	0	5
School Psychologist	2	0	2
Additional Programs			
Reading Specialist	1	0	1
Speech Pathology	5	0	5
TOTAL ADVANCED	15	0	15
GRAND TOTAL	315	14	329

NOTE: Totals do not reflect number of students, but number of endorsements granted between July 1 and June 30. The "JMU GRAD" column includes students who graduated and completed licensure requirements during 2007-08. The "OTHER" column includes students who received a bachelor's or master's degree prior to 2007-08 and enrolled or reenrolled at JMU to become certified in a particular field. Seventeen students have multiple endorsements.

SOURCE: Education Support Center.

**TABLE 3-8**  
**LIBRARY COLLECTIONS AND SERVICES,**  
**2003-04 - 2007-08**

	2003-04	2004-05	2005-06	2006-07	2007-08
Bookstock <sup>1</sup>	618,067	627,410	629,284	635,329	638,787
Microform Units	1,050,336	1,053,570	1,050,660	1,050,126	1,056,494
Government Documents	573,052	543,047	540,348	540,438	541,321
Current Periodicals	6,528	8,754	11,678	12,811	13,139
Circulation <sup>2</sup>	179,718	175,233	176,445	174,395	178,359
Expenditures	\$5,565,400	\$6,376,441	\$7,067,884	\$7,508,374	\$8,296,622
Interlibrary Transactions					
Net Loans	8,785	9,742	10,906	14,668	16,451
Net Borrowing	11,957	12,709	11,290	10,365	12,246
Weekly Hours of Service	105	105	111	111	111

NOTE: Additional electronic books, databases, statistical reports, full-text poetry, and online journals are available through VIVA, the Virtual Library of Virginia.

<sup>1</sup> Includes government document bookstock for years 2002 and later.

<sup>2</sup> Includes initial checkouts and renewals for years 2002 and later; does not include reserves.

SOURCE: Internal library statistics. Expenditures data comes from Accounting Services.

**TABLE 3-9**  
**ON AND OFF-CAMPUS FIRST MAJORS BY COLLEGE AND**  
**FULL-TIME/PART-TIME STATUS,**  
**FALL 2008**

CIP CODE	MAJOR	FULL- TIME UGRAD	PART- TIME UGRAD	FULL- TIME GRAD	PART- TIME GRAD	GRAND TOTAL	TEACHER EDUC
College of Arts & Letters							
45.0201	Anthropology	110	7	-	-	117	3
09.0101	Communication Studies	588	5	-	-	593	4
23.0101	English	396	16	10	7	429	64
54.0101	History	373	5	25	9	412	34
45.0101	Interdisciplinary Social Science	39	3	-	-	42	31
45.0901	International Affairs	384	3	-	-	387	1
22.0201	Justice Studies	281	3	-	-	284	1
09.0101	Media Arts & Design	708	9	-	-	717	-
16.0101	Modern Foreign Languages	123	5	-	-	128	18
38.9999	Philosophy & Religion	61	6	-	-	67	-
45.1001	Political Science	342	8	16	0	366	3
44.0401	Public Administration	70	2	14	28	114	1
45.1101	Sociology	88	4	-	-	92	-
23.1101	Technical & Scientific Communication	68	3	14	8	93	1
	COLLEGE TOTAL	3,631	79	79	52	3,841	161
College of Business							
52.0301	Accounting	501	27	60	5	593	1
52.0201	Business Administration	-	-	12	58	70	-
11.0401	Computer Information Systems	156	10	-	-	166	1
45.0601	Economics	74	4	-	-	78	-
52.0601	Economics (Business)	118	1	-	-	119	-
52.0801	Finance	724	11	-	-	735	1
52.0901	Hospitality & Tourism Management	303	6	-	-	309	1
52.1101	International Business	355	2	-	-	357	1
52.0201	Management	692	13	-	-	705	-
52.1401	Marketing	815	9	-	-	824	1
52.0899	Quantitative Finance	93	0	-	-	93	-
	COLLEGE TOTAL	3,831	83	72	63	4,049	6

**TABLE 3-9 CONTINUED**  
**ON AND OFF-CAMPUS FIRST MAJORS BY COLLEGE AND**  
**FULL-TIME/PART-TIME STATUS,**  
**FALL 2008**

CIP CODE	MAJOR	FULL- TIME UGRAD	PART- TIME UGRAD	FULL- TIME GRAD	PART- TIME GRAD	GRAND TOTAL	TEACHER EDUC
College of Education							
13.1201	Adult Education/Human Res. Dev.	-	-	18	12	30	-
13.0101	Education	-	-	219	27	246	222
13.1001	Exceptional Education	-	-	35	8	43	31
24.0101	Interdisciplinary Liberal Studies	810	13	-	-	823	611
	COLLEGE TOTAL	810	13	272	47	1,142	864
College of Integrated Science & Technology							
42.1901	Assessment & Measurement (Ph.D.)	-	-	11	7	18	-
51.0913	Athletic Training	121	1	-	-	122	1
51.0202	Audiology (Au.D.)	-	-	23	1	24	-
42.0101	Combined-Integrated Psychology (Psy.D./Ph.D.)	-	-	19	0	19	-
51.0203	Communication Sciences & Disorders	240	3	-	-	243	1
51.0203	Communication Sciences & Disorders (Ph.D.)	-	-	6	5	11	-
11.0101	Computer Science	218	16	9	51	294	1
13.1101	Counseling Psychology	-	-	52	28	80	2
13.9999	Counseling Psychology (Ed.S.)	-	-	6	6	12	-
19.0501	Dietetics	167	9	-	-	176	-
45.0701	Geographic Science	109	3	-	-	112	-
13.1307	Health Education	-	-	14	9	23	-
51.1504	Health Sciences	827	11	-	-	838	4
51.0701	Health Services Administration	75	1	-	-	76	-
30.0601	Information Analysis	43	2	-	-	45	-
30.1501	Integrated Science & Technology	279	11	13	13	316	-
31.0501	Kinesiology	730	25	60	14	829	57
51.1601	Nursing	726	32	-	-	758	-
51.1603	Nursing	-	-	19	16	35	-
51.2306	Occupational Therapy	-	-	48	0	48	-
51.0912	Physician Assistant Studies	-	-	47	2	49	-
42.0101	Psychological Sciences	-	-	18	1	19	-
42.0101	Psychology	771	16	-	-	787	9
42.1701	School Psychology	-	-	9	0	9	9
13.9999	School Psychology (Ed.S.)	-	-	6	11	17	17
44.0701	Social Work	164	3	-	-	167	4
51.0203	Speech Pathology	-	-	57	8	65	-
	COLLEGE TOTAL	4,470	133	417	172	5,192	105

**TABLE 3-9 CONTINUED**  
**ON AND OFF-CAMPUS FIRST MAJORS BY COLLEGE AND**  
**FULL-TIME/PART-TIME STATUS,**  
**FALL 2008**

CIP CODE	MAJOR	FULL- TIME UGRAD	PART- TIME UGRAD	FULL- TIME GRAD	PART- TIME GRAD	GRAND TOTAL	<i>TEACHER EDUC</i>
College of Science & Mathematics							
26.0101	Biology	782	25	10	4	821	13
40.0501	Chemistry	165	6	-	-	171	4
40.0601	Earth Science	15	0	-	-	15	3
40.0601	Geology	51	6	-	-	57	5
13.1311	Mathematics	-	-	0	9	9	-
27.0101	Mathematics	146	4	-	-	150	38
40.0801	Physics	88	4	-	-	92	1
27.0101	Statistics	9	0	-	-	9	-
	COLLEGE TOTAL	1,256	45	10	13	1,324	64
College of Visual & Performing Arts							
50.0701	Art	468	26	7	1	502	53
50.0703	Art History	54	5	-	-	59	1
50.0903	Music	379	11	15	5	410	99
50.0912	Music (D.M.A.)	-	-	15	1	16	-
50.0501	Theatre & Dance	179	2	-	-	181	6
	COLLEGE TOTAL	1,080	44	37	7	1,168	159
Interdisciplinary & Undeclared							
26.1201	Biotechnology	87	5	-	-	92	-
14.0101	Engineering	120	0	-	-	120	-
24.0101	Individualized Study	18	76	-	-	94	-
90.0000	Undeclared	865	2	-	-	867	1
	GRAND TOTAL	16,168	480	887	354	17,889	1,360

**NOTE:** The “*TEACHER EDUC*” column indicates the number of students included in the “GRAND TOTAL” who are also enrolled in a professional teacher licensure program. Non-degree seeking students are not included.

**SOURCE:** Fall Student Census.

**TABLE 3-10**  
**ON AND OFF-CAMPUS FIRST MAJORS BY RACE,**  
**FALL 2008**

CIP CODE	MAJOR	SCHEV	AFRICAN AMERICAN	AMERICAN INDIAN	ASIAN/ PAC.ISL	HISPANIC	NR		UN- REPORTED	TOTAL
		PROGRAM LEVEL					WHITE	ALIEN		
52.0301	Accounting	40	23	0	48	12	411	7	27	528
52.0301	Accounting	70	0	0	5	1	56	3	0	65
13.1201	Adult Education/Human Res. Dev.	70	7	0	0	1	21	1	0	30
45.0201	Anthropology	40	3	0	3	3	101	0	7	117
50.0701	Art	40	6	2	25	9	427	2	23	494
50.0701	Art	70	1	0	1	0	6	0	0	8
50.0703	Art History	40	2	1	2	0	50	3	1	59
42.1901	Assessment & Measurement (Ph.D.)	85	3	0	0	0	14	1	0	18
51.0913	Athletic Training	40	6	0	5	2	105	1	3	122
51.0202	Audiology (Au.D.)	85	0	0	0	0	24	0	0	24
26.0101	Biology	40	36	2	109	24	581	3	52	807
26.0101	Biology	70	0	0	1	0	12	1	0	14
26.1201	Biotechnology	40	2	1	8	2	71	1	7	92
52.0201	Business Administration	70	2	1	5	0	56	5	1	70
40.0501	Chemistry	40	12	0	19	2	124	2	12	171
42.0101	Combined-Integrated Psychology (Psy.D./Ph.D.)	85	1	0	1	0	14	2	1	19
51.0203	Communication Sciences & Disorders	40	6	0	7	4	219	0	7	243
51.0203	Communication Sciences & Disorders (Ph.D.)	85	0	0	0	0	11	0	0	11
09.0101	Communication Studies	40	33	1	10	16	505	0	28	593
11.0401	Computer Information Systems	40	18	0	10	6	118	10	4	166
11.0101	Computer Science	40	5	1	18	2	179	6	23	234
11.0101	Computer Science	70	2	1	1	2	48	5	1	60
13.1101	Counseling Psychology	70	11	0	0	0	62	1	6	80
13.9999	Counseling Psychology (Ed.S.)	80	0	0	1	0	11	0	0	12
19.0501	Dietetics	40	3	0	6	4	155	1	7	176
40.0601	Earth Science	40	1	0	0	0	14	0	0	15
45.0601	Economics	40	5	0	5	1	57	3	7	78
52.0601	Economics (Business)	40	5	0	3	4	91	7	9	119
13.0101	Education	70	2	0	4	2	234	0	4	246
14.0101	Engineering	40	2	0	7	2	95	1	13	120
23.0101	English	40	14	3	13	6	356	1	19	412
23.0101	English	70	1	0	0	0	16	0	0	17
13.1001	Exceptional Education	70	0	0	2	0	40	0	1	43
52.0801	Finance	40	19	0	61	18	569	18	50	735

**TABLE 3-10 CONTINUED**  
**ON AND OFF-CAMPUS FIRST MAJORS BY RACE,**  
**FALL 2008**

CIP CODE	MAJOR	SCHEV	AFRICAN AMERICAN	AMERICAN INDIAN	ASIAN/ PAC.ISL	HISPANIC	WHITE	NR ALIEN	UN- REPORTED	TOTAL
		PROGRAM LEVEL								
45.0701	Geographic Science	40	2	0	1	2	97	2	8	112
40.0601	Geology	40	0	0	0	3	47	1	6	57
13.1307	Health Education	70	1	0	0	0	22	0	0	23
51.1504	Health Sciences	40	41	3	58	18	665	4	49	838
51.0701	Health Services Administration	40	9	0	8	2	55	0	2	76
54.0101	History	40	9	1	11	4	318	1	34	378
54.0101	History	70	1	0	0	0	32	0	1	34
52.0901	Hospitality & Tourism Management	40	10	2	13	7	256	0	21	309
24.0101	Individualized Study	40	6	1	0	0	82	1	4	94
30.0601	Information Analysis	40	0	1	2	0	40	0	2	45
30.1501	Integrated Science & Technology	40	8	0	11	8	246	0	17	290
30.1501	Integrated Science & Technology	70	1	0	1	1	17	6	0	26
24.0101	Interdisciplinary Liberal Studies	40	20	1	14	12	743	3	30	823
45.0101	Interdisciplinary Social Science	40	2	0	1	0	34	0	5	42
45.0901	International Affairs	40	14	0	18	31	271	12	41	387
52.1101	International Business	40	10	0	35	25	237	15	35	357
22.0201	Justice Studies	40	22	0	11	8	228	1	14	284
31.0501	Kinesiology	40	75	3	19	22	608	5	23	755
31.0501	Kinesiology	70	7	1	2	0	62	2	0	74
52.0201	Management	40	23	3	26	15	591	14	33	705
52.1401	Marketing	40	20	3	35	11	701	4	50	824
27.0101	Mathematics	40	4	0	7	4	130	0	5	150
13.1311	Mathematics	70	0	0	0	0	9	0	0	9
09.0101	Media Arts & Design	40	16	2	23	20	620	1	35	717
16.0101	Modern Foreign Languages	40	2	0	1	4	107	1	13	128
50.0903	Music	40	24	1	22	8	311	3	21	390
50.0903	Music	70	0	0	0	0	17	0	3	20
50.0912	Music (D.M.A.)	85	1	0	0	1	9	4	1	16
51.1601	Nursing	40	18	2	36	15	659	1	27	758
51.1603	Nursing	70	1	0	0	0	32	0	2	35
51.2306	Occupational Therapy	70	1	0	2	1	43	0	1	48
38.9999	Philosophy & Religion	40	1	1	3	2	52	0	8	67
51.0912	Physician Assistant Studies	70	1	0	2	1	44	0	1	49
40.0801	Physics	40	1	1	3	2	73	0	12	92

**TABLE 3-10 CONTINUED**  
**ON AND OFF-CAMPUS FIRST MAJORS BY RACE,**  
**FALL 2008**

CIP CODE	MAJOR	SCHEV	AFRICAN AMERICAN	AMERICAN INDIAN	ASIAN/ PAC.ISL	HISPANIC	NR		UN- REPORTED	TOTAL
		PROGRAM LEVEL					WHITE	ALIEN		
45.1001	Political Science	40	17	1	15	10	275	4	28	350
45.1001	Political Science	70	0	0	1	1	14	0	0	16
42.0101	Psychological Sciences	70	0	0	1	0	16	0	2	19
42.0101	Psychology	40	40	3	24	20	645	10	45	787
44.0401	Public Administration	40	6	1	0	1	45	14	5	72
44.0401	Public Administration	70	2	0	1	0	37	1	1	42
52.0899	Quantitative Finance	40	0	0	11	1	77	2	2	93
42.1701	School Psychology	70	1	0	1	0	7	0	0	9
13.9999	School Psychology (Ed.S.)	80	1	0	0	1	14	0	1	17
44.0701	Social Work	40	17	0	4	6	131	1	8	167
45.1101	Sociology	40	9	0	3	1	73	1	5	92
51.0203	Speech Pathology	70	1	1	2	1	58	0	2	65
27.0101	Statistics	40	1	0	1	0	6	0	1	9
23.1101	Technical & Scientific Communication	40	3	0	2	4	59	0	3	71
23.1101	Technical & Scientific Communication	70	0	0	1	1	20	0	0	22
50.0501	Theatre & Dance	40	6	1	3	5	153	0	13	181
90.0000	Undeclared	40	25	2	42	19	710	5	64	867
TOTALS BY SCHEV PROGRAM LEVEL										
	UNDERGRADUATE	40	662	44	822	407	13,573	172	968	16,648
	GRADUATE	70	43	4	33	12	981	25	26	1,124
	ADVANCED GRADUATE (ED.S.)	80	1	0	1	1	25	0	1	29
	DOCTORAL	85	5	0	1	1	72	7	2	88
	GRAND TOTAL		711	48	857	421	14,651	204	997	17,889

SOURCE: Fall Student Census.

**TABLE 3-11**  
**ON AND OFF-CAMPUS FIRST MAJORS BY COLLEGE,**  
**FALL 2003 - FALL 2008**

CIP CODE	MAJOR	2003	2004	2005	2006	2007	2008
College of Arts & Letters							
45.0201	Anthropology	95	98	111	111	121	117
09.0101	Communication Studies	190	366	462	454	522	593
23.0101	English	488	483	522	512	472	429
54.0101	History	298	311	307	297	325	412
45.0101	Interdisciplinary Social Science	175	170	171	147	141	42
45.0901	International Affairs	188	247	249	282	328	387
22.0201	Justice Studies	-	4	105	220	267	284
09.0101	Media Arts & Design	448	729	716	717	730	717
16.0101	Modern Foreign Languages	108	108	118	130	126	128
38.9999	Philosophy & Religion	87	96	111	106	77	67
45.1001	Political Science	382	472	429	371	376	366
44.0401	Public Administration	150	171	143	127	112	114
45.1101	Sociology	224	207	161	138	90	92
23.1101	Technical & Scientific Communication	104	93	95	103	72	93
	COLLEGE TOTAL	2,937	3,555	3,700	3,715	3,759	3,841
College of Business							
52.0301	Accounting	393	455	509	597	599	593
52.0201	Business Administration	86	89	83	103	116	70
11.0401	Computer Information Systems	341	233	171	137	165	166
45.0601	Economics	125	80	76	69	72	78
52.0601	Economics (Business)	67	76	108	96	111	119
52.0801	Finance	513	535	608	643	684	735
52.0901	Hospitality & Tourism Management	198	245	292	315	319	309
52.1101	International Business	273	259	293	320	318	357
52.0201	Management	474	575	691	730	718	705
52.1401	Marketing	791	734	711	759	826	824
52.0201	Operations Management	16	4	1	-	-	-
52.0899	Quantitative Finance	53	63	62	66	93	93
	COLLEGE TOTAL	3,330	3,348	3,605	3,835	4,021	4,049

TABLE 3-11 CONTINUED

**ON AND OFF-CAMPUS FIRST MAJORS BY COLLEGE,  
FALL 2003 - FALL 2008**

CIP CODE	MAJOR	2003	2004	2005	2006	2007	2007
College of Education							
13.1201	Adult Education/Human Res. Dev.	26	21	24	17	25	30
13.1303	Business & Marketing Education	47	4	2	-	-	-
13.0101	Education	78	180	204	174	220	246
13.1001	Exceptional Education	-	-	-	-	47	43
24.0101	Interdisciplinary Liberal Studies	703	689	736	809	819	823
13.1001	Special Education	31	51	53	56	-	-
	<b>COLLEGE TOTAL</b>	<b>885</b>	<b>945</b>	<b>1,019</b>	<b>1,056</b>	<b>1,111</b>	<b>1,142</b>
College of Integrated Science & Technology							
42.1901	Assessment & Measurement (Ph.D.)	14	13	17	20	19	18
51.0913	Athletic Training	-	77	103	133	135	122
51.0202	Audiology (Au.D.)	-	-	6	28	24	24
42.0101	Combined-Integrated Psychology (Psy.D./Ph.D.)	26	20	21	21	22	19
51.0203	Communication Sciences & Disorders	199	198	214	222	234	243
51.0203	Communication Sciences & Disorders (Ph.D.)	35	34	27	9	8	11
11.0101	Computer Science	256	323	328	318	294	294
13.1101	Counseling Psychology	59	57	72	82	79	80
13.9999	Counseling Psychology (Ed.S.)	30	29	13	9	14	12
19.0501	Dietetics	92	89	113	117	176	176
45.0701	Geographic Science	87	108	108	112	103	112
13.1307	Health Education	27	33	43	44	46	23
51.1504	Health Sciences	688	664	669	722	776	838
51.0701	Health Services Administration	-	18	35	62	57	76
30.0601	Information Analysis	-	-	-	-	-	45
51.0202	Hearing Disorders	0	0	0	0	0	0
30.1501	Integrated Science & Technology	539	431	350	323	314	316
31.0501	Kinesiology	509	577	685	719	783	829
51.1601	Nursing	329	433	512	595	655	758
51.1603	Nursing (M.S.N)	-	10	19	17	24	35
51.2306	Occupational Therapy	-	-	4	23	41	48
51.0912	Physician Assistant Studies	-	20	39	33	36	49
42.0101	Psychological Sciences	25	21	22	19	13	19
42.0101	Psychology	667	814	823	839	808	787
31.0501	Recreation	44	48	16	3	-	-
42.1701	School Psychology	13	16	10	10	6	9
13.9999	School Psychology (Ed.S.)	13	10	17	22	22	17
44.0701	Social Work	130	140	153	168	150	167
51.0203	Speech Pathology	58	54	60	55	62	65
	<b>COLLEGE TOTAL</b>	<b>3,840</b>	<b>4,237</b>	<b>4,479</b>	<b>4,725</b>	<b>4,901</b>	<b>5,192</b>

**TABLE 3-11 CONTINUED**  
**ON AND OFF-CAMPUS FIRST MAJORS BY COLLEGE,**  
**FALL 2003 - FALL 2008**

CIP CODE	MAJOR	2003	2004	2005	2006	2007	2007
College of Science & Mathematics							
26.0101	Biology	700	714	743	782	798	821
40.0501	Chemistry	136	145	169	164	175	171
40.0601	Earth Science	-	-	-	-	8	15
40.0601	Geology	67	57	59	52	54	57
13.1311	Mathematics (M.Ed.)	-	-	4	6	8	9
27.0101	Mathematics	123	144	159	143	157	150
40.0801	Physics	81	83	95	101	97	92
27.0101	Statistics	-	6	7	9	12	9
	COLLEGE TOTAL	1,107	1,149	1,236	1,257	1,309	1,324
College of Visual & Performing Arts							
50.0701	Art	572	542	524	491	485	502
50.0703	Art History	49	43	51	48	59	59
50.0903	Music	347	378	408	405	407	410
50.0912	Music (D.M.A.)	-	-	-	-	8	16
50.0501	Theatre & Dance	162	171	167	171	175	181
	COLLEGE TOTAL	1,130	1,134	1,150	1,115	1,134	1,168
Interdisciplinary & Undeclared							
26.1201	Biotechnology	-	-	21	58	68	92
14.0101	Engineering	-	-	-	-	-	120
24.0101	Individualized Study	86	77	97	85	88	94
90.0000	Undeclared	2,179	1,204	1,047	945	983	867
	GRAND TOTAL	15,494	15,649	16,354	16,791	17,374	17,889

SOURCE: Fall Student Census.

**TABLE 3-12**  
**ON AND OFF-CAMPUS FIRST MAJORS BY COLLEGE, SEX,**  
**AND FULL-TIME/PART-TIME STATUS,**  
**FALL 2008**

COLLEGE	FULL-TIME UGRAD	PART-TIME UGRAD	FULL-TIME GRAD	PART-TIME GRAD	GRAND TOTAL
College of Art & Letters					
Male	1,427	47	36	21	1,531
Female	2,204	32	43	31	2,310
TOTAL	3,631	79	79	52	3,841
College of Business					
Male	2,203	57	47	44	2,351
Female	1,628	26	25	19	1,698
TOTAL	3,831	83	72	63	4,049
College of Education					
Male	27	1	44	14	86
Female	783	12	228	33	1,056
TOTAL	810	13	272	47	1,142
College of Integrated Science & Technology					
Male	1,478	62	90	84	1,714
Female	3,112	71	327	88	3,598
TOTAL	4,590	133	417	172	5,312
College of Science & Mathematics					
Male	537	23	4	6	570
Female	719	22	6	7	754
TOTAL	1,256	45	10	13	1,324
College of Visual & Performing Arts					
Male	345	18	19	4	386
Female	735	26	18	3	782
TOTAL	1,080	44	37	7	1,168
Interdisciplinary					
Male	60	35	-	-	95
Female	45	46	-	-	91
TOTAL	105	81	-	-	186
Undeclared					
Male	391	1	-	-	392
Female	474	1	-	-	475
TOTAL	865	2	-	-	867
GRAND TOTAL	16,168	480	887	354	17,889

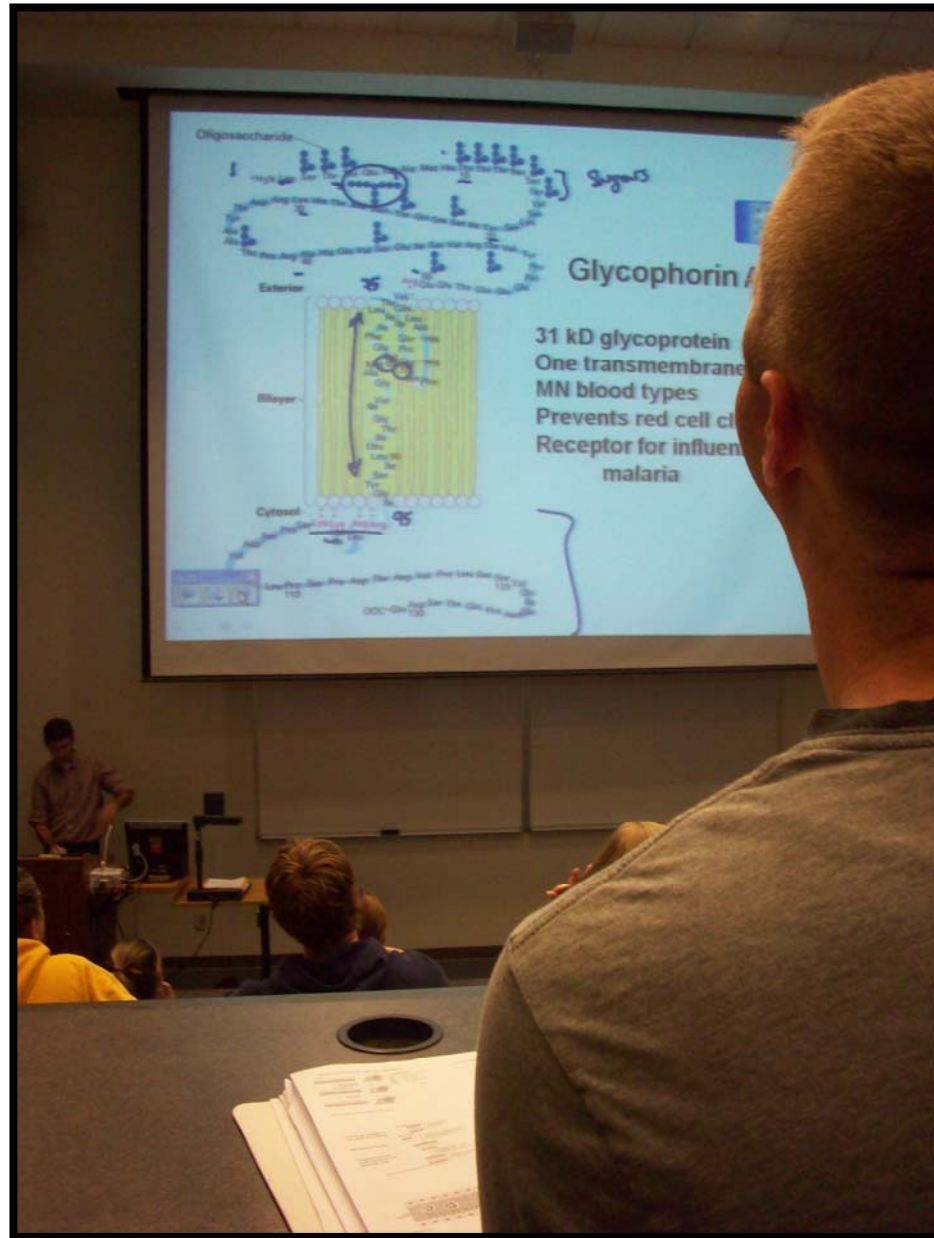
SOURCE: Fall Student Census.

**TABLE 3-13**  
**TEACHER LICENSURE PROGRAMS HEADCOUNT BY**  
**SCHEV PROGRAM DESCRIPTION,**  
**FALL 2008**

SCHEV DESCRIPTION	STATUS	UNDER- GRADUATE	GRADUATE	NON-DEGREE SEEKING	TOTAL
Elementary	Full-time	130	20	16	166
	Part-time	4	2	0	6
	TOTAL	134	22	16	172
Middle School	Full-time	457	128	0	585
	Part-time	6	1	0	7
	TOTAL	463	129	0	592
Secondary	Full-time	206	70	0	276
	Part-time	6	0	0	6
	TOTAL	212	70	0	282
Multi-Level	Full-time	185	14	3	202
	Part-time	6	0	3	9
	TOTAL	191	14	6	211
Counselors	Full-time	0	0	0	0
	Part-time	0	1	0	1
	TOTAL	0	1	0	1
Principals & Administrators	Full-time	0	0	0	0
	Part-time	0	1	0	1
	TOTAL	0	1	0	1
Special Education	Full-time	63	29	0	92
	Part-time	2	2	0	4
	TOTAL	65	31	0	96
Other (Including School Psychologist)	Full-time	0	16	0	16
	Part-time	0	11	0	11
	TOTAL	0	27	0	27
Unknown	Full-time	0	0	0	0
	Part-time	0	0	1	1
	TOTAL	0	0	1	1
<b>GRAND TOTAL</b>		<b>1,065</b>	<b>295</b>	<b>23</b>	<b>1,383</b>

SOURCE: Fall Student Census and Education Support Center.

# Faculty and Staff



**TABLE 4-1**  
**FULL-TIME INSTRUCTIONAL FACULTY BY DEPARTMENT**  
**AND TENURE, FALL 2008**

DEPARTMENT	NUMBER FACULTY	NUMBER HAVING TENURE			Total	PERCENT TENURED
		Asst Prof	Assoc Prof	Prof		
College of Arts & Letters						
School of Communication Studies	39	1	3	4	8	21%
English	26	0	6	8	14	54%
Foreign Lang., Lit. & Cultures	20	0	1	5	6	30%
History	32	0	8	11	19	59%
Justice Studies	11	0	1	3	4	36%
School of Media Arts & Design	21	1	7	9	17	81%
Philosophy & Religion	21	0	4	7	11	52%
Political Science	27	0	3	8	11	41%
Sociology & Anthropology	22	0	4	4	8	36%
School of Writing, Rhetoric & Tech. Comm.	27	0	8	2	10	37%
COLLEGE TOTAL	246	2	45	61	108	44%
College of Business	124	1	26	40	67	54%
COLLEGE TOTAL	124	1	26	40	67	54%
College of Education						
Dean's Office	1	0	1	0	1	100%
Education Departments	50	0	6	10	16	32%
COLLEGE TOTAL	51	0	7	10	17	33%
College of Integrated Science & Technology						
CISAT Lab Operations	3	0	0	1	1	33%
Communication Sciences & Disorders	14	0	3	5	8	57%
Computer Science	17	0	3	6	9	53%
Dean's Office	1	0	0	1	1	100%
Health Sciences	36	0	3	6	9	25%
Institute for Innovation in Health & Human Services	3	0	1	0	1	33%
Integrated Science & Technology	49	0	3	22	25	51%
Kinesiology	19	0	5	3	8	42%
Nursing	26	0	4	3	7	27%
Psychology	23	0	8	7	15	65%
Psychology, Graduate	22	0	6	12	18	82%
Social Work	8	0	1	1	2	25%
COLLEGE TOTAL	221	0	37	67	104	47%

**TABLE 4-1 CONTINUED**  
**FULL-TIME INSTRUCTIONAL FACULTY BY DEPARTMENT**  
**AND TENURE, FALL 2008**

DEPARTMENT	NUMBER FACULTY	NUMBER HAVING TENURE			Total	PERCENT TENURED
		Asst Prof	Assoc Prof	Prof		
College of Science & Mathematics						
Biology	40	0	13	7	20	50%
Chemistry & Biochemistry	20	0	5	6	11	55%
Dean's Office	1	0	0	1	1	100%
Geology & Environmental Science	15	0	3	6	9	60%
Mathematics & Statistics	44	0	6	16	22	50%
Physics & Astronomy	18	1	3	4	8	44%
COLLEGE TOTAL	138	1	30	40	71	51%
College of Visual & Performing Arts						
School of Art & Art History	29	0	11	11	22	76%
School of Music	44	0	15	14	29	66%
School of Theatre & Dance	14	0	3	5	8	57%
COLLEGE TOTAL	87	0	29	30	59	68%
Center for Assessment & Research Studies	7	0	3	1	4	57%
School of Engineering	4	0	0	1	1	25%
Center for Faculty Innovation	3	0	1	1	2	67%
Furious Flower Poetry Center	2	0	0	1	1	50%
Interdisciplinary Liberal Studies	1	0	1	0	1	100%
International Education	1	0	0	0	0	0%
Learning Resource Center	3	0	0	0	0	0%
University Advising	3	0	0	0	0	0%
University Studies	6	0	2	2	4	67%
GRAND TOTAL	897	4	181	254	439	49%

NOTE: Includes faculty on leave with pay.

SOURCE: Fall Personnel Census and Academic Affairs.

TABLE 4-2

**FULL-TIME INSTRUCTIONAL FACULTY BY SEX AND TERMINAL DEGREE,  
FALL 2008**

DEPARTMENT	NUMBER FACULTY		NUMBER TERMINAL		PERCENT TERMINAL
	Male	Female	Male	Female	
College of Arts & Letters					
School of Communication Studies	22	17	12	8	51%
English	9	17	8	16	92%
Foreign Lang., Lit. & Cultures	8	12	6	6	60%
History	21	11	20	10	94%
Justice Studies	6	5	3	5	73%
School of Media Arts & Design	16	5	8	5	62%
Philosophy & Religion	17	4	17	4	100%
Political Science	17	10	17	10	100%
Sociology & Anthropology	13	9	11	8	86%
School of Writing, Rhetoric & Tech. Comm.	10	17	7	9	59%
COLLEGE TOTAL	139	107	109	81	77%
College of Business	88	36	65	18	67%
COLLEGE TOTAL	88	36	65	18	67%
College of Education					
Dean's Office	0	1	0	1	100%
Education Departments	10	40	8	33	82%
COLLEGE TOTAL	10	41	8	34	82%
College of Integrated Science & Technology					
CISAT Lab Operations	2	1	2	0	67%
Communication Sciences & Disorders	6	8	5	7	86%
Computer Science	15	2	13	1	82%
Dean's Office	0	1	0	1	100%
Health Sciences	11	25	7	18	69%
Institute for Innovation in Health & Human Services	0	3	0	1	33%
Integrated Science & Technology	36	13	32	12	90%
Kinesiology	10	9	9	5	74%
Nursing	1	25	1	8	35%
Psychology	13	10	11	9	87%
Psychology, Graduate	11	11	11	11	100%
Social Work	0	8	0	7	88%
COLLEGE TOTAL	105	116	91	80	77%

TABLE 4-2 CONTINUED

**FULL-TIME INSTRUCTIONAL FACULTY BY SEX AND TERMINAL DEGREE,  
FALL 2008**

DEPARTMENT	NUMBER FACULTY		NUMBER TERMINAL		PERCENT TERMINAL
	Male	Female	Male	Female	
College of Science & Mathematics					
Biology	23	17	23	14	93%
Chemistry & Biochemistry	10	10	9	8	85%
Dean's Office	0	1	0	1	100%
Geology & Environmental Science	11	4	11	3	93%
Mathematics & Statistics	27	17	25	11	82%
Physics & Astronomy	14	4	13	3	89%
COLLEGE TOTAL	85	53	81	40	88%
College of Visual & Performing Arts					
School of Art & Art History	13	16	11	15	90%
School of Music	32	12	21	12	75%
School of Theatre & Dance	7	7	7	7	100%
COLLEGE TOTAL	52	35	39	34	84%
Center for Assessment & Research Studies	1	6	1	5	86%
School of Engineering	3	1	3	1	100%
Center for Faculty Innovation	0	3	0	2	67%
Furious Flower Poetry Center	0	2	0	1	50%
Interdisciplinary Liberal Studies	1	0	1	0	100%
International Education	0	1	0	1	100%
Learning Resource Center	1	2	0	1	33%
University Advising	1	2	0	1	33%
University Studies	2	4	2	1	50%
GRAND TOTAL	488	409	400	300	78%

**NOTE:** Includes faculty on leave with pay. Faculty with terminal degrees includes the earned doctorate, the Doctor of Law (LL.D.), the Master of Fine Arts (M.F.A.) for instructors in the performing arts and English. The Master of Social Work (M.S.W.) is considered to be the terminal degree for undergraduate social work instruction.

**SOURCE:** Fall Personnel Census and Academic Affairs.

TABLE 4-3

**ALL FULL-TIME FACULTY BY DOCTORATE SOURCE,  
FALL 2008**

INSTITUTION AWARDDING DEGREE	NUMBER OF FACULTY
University of Virginia	65
Virginia Polytechnic Institute & State University	28
Indiana University-Bloomington	23
University of North Carolina at Chapel Hill	18
University of Georgia	15
Cornell University	10
Ohio State University-Main Campus	10
University of Maryland-College Park	10
Ohio University-Main Campus	9
University of Illinois at Champaign-Urbana	9
University of Iowa	9
Virginia Commonwealth University	9
Florida State University	8
Purdue University	8
Southern Illinois University-Carbondale	8
University of Florida	8
Duke University	7
University of Michigan-Ann Arbor	7
University of Texas at Austin	7
Louisiana State University & A&M College	6
Michigan State University	6
Temple University	6
University of Arizona	6
University of Chicago	6
University of Minnesota-Twin Cities	6
University of North Carolina at Greensboro	6
University of Tennessee at Knoxville	6
University of Wisconsin-Madison	6

NOTE: An additional 155 institutions were each represented by five or fewer faculty.

SOURCE: Fall Personnel Census and Human Resources.

TABLE 4-4

**FULL-TIME INSTRUCTIONAL FACULTY, AVERAGE ACADEMIC TERM SALARY  
AND COMPENSATION BY RANK, 2004-05 - 2008-09**

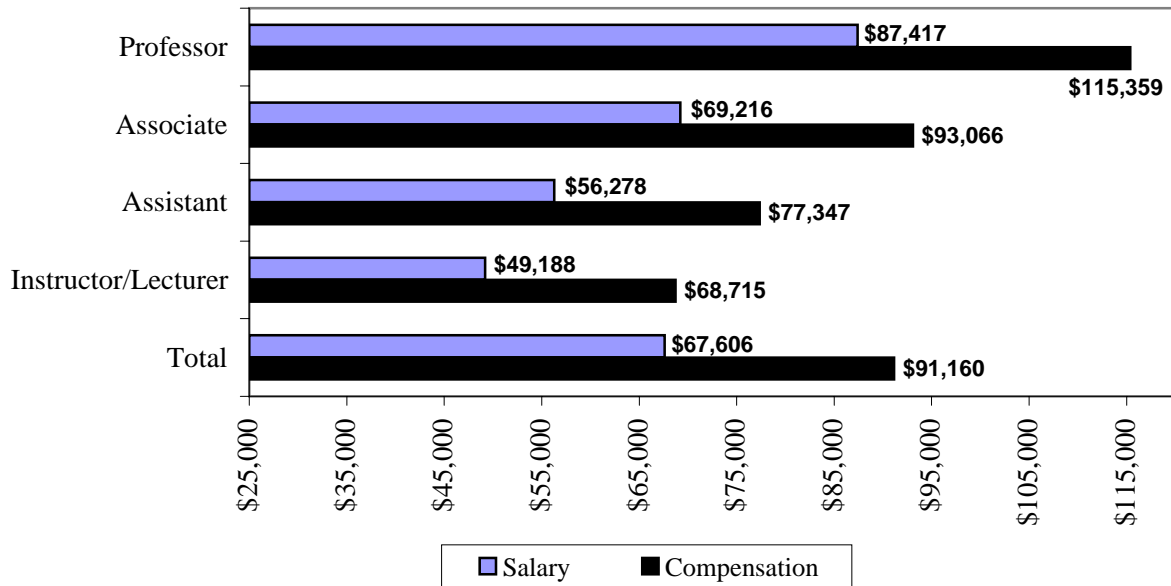
	2004-05	2005-06	2006-07	2007-08	2008-09
<b>Professor</b>					
Number	220	242	253	263	265
Salary	\$77,648	\$81,204	\$83,810	\$87,587	\$87,417
Compensation	\$99,966	\$104,833	\$110,440	\$115,560	\$115,359
<b>Associate Professor</b>					
Number	191	191	202	206	221
Salary	\$62,798	\$66,051	\$67,849	\$68,948	\$69,216
Compensation	\$82,550	\$87,061	\$90,992	\$92,800	\$93,066
<b>Assistant Professor</b>					
Number	249	251	254	267	277
Salary	\$50,559	\$53,561	\$54,823	\$56,994	\$56,278
Compensation	\$67,825	\$72,017	\$75,117	\$78,240	\$77,347
<b>Instructor/Lecturer</b>					
Number	89	111	122	118	134
Salary	\$42,936	\$44,301	\$46,210	\$48,982	\$49,188
Compensation	\$58,452	\$60,692	\$64,592	\$68,441	\$68,715
<b>All Ranks</b>					
Number	749	795	831	854	897
Salary	\$60,731	\$63,684	\$65,550	\$68,192	\$67,606
Compensation	\$79,907	\$84,039	\$88,185	\$91,892	\$91,160

NOTE: Compensation equals salary plus fringe benefits. Includes Academic Term (9 month) and 12 month faculty, with the latter converted to an Academic Term basis.

SOURCE: American Association of University Professors Annual Survey of Faculty Compensation.

**FIGURE 4-1**

**INSTRUCTIONAL FACULTY, AVERAGE SALARY BY RANK,  
FALL 2008**



**NOTE:** Compensation equals salary plus fringe benefits. Includes Academic Term (9 month) and 12 month faculty, with the latter converted to an Academic Term basis.

**SOURCE:** American Association of University Professors Annual Survey of Faculty Compensation.

TABLE 4-5

**FULL-TIME EDUCATIONAL AND GENERAL STAFF BY FUNCTIONAL CATEGORY,  
FALL 2004 - FALL 2008**

CATEGORY	2004	2005	2006	2007	2008
<b>Instruction</b>					
Faculty (Includes department heads)	742	785	820	848	892
Administrative Faculty	2	4	3	4	6
Support Services - Classified	93	96	92	94	99
Support Services - Professional Faculty	11	11	14	15	15
TOTAL	848	896	929	961	1,012
<b>Academic Support</b>					
Administrative Faculty	17	17	15	19	17
Support Services - Classified	99	110	114	118	126
Support Services - Professional Faculty	32	34	34	39	41
Library - Professional Faculty	21	20	20	20	27
TOTAL	169	181	183	196	211
<b>Student Services</b>					
Administrative Faculty	9	7	8	8	8
Support Services - Classified	46	50	52	54	59
Support Services - Professional Faculty	38	42	50	60	56
TOTAL	93	99	110	122	123
<b>Institutional Support</b>					
Administrative Faculty	19	22	22	25	26
Support Services - Classified	201	204	196	202	209
Support Services - Professional Faculty	24	33	38	38	41
TOTAL	244	259	256	265	276
<b>Operation &amp; Maintenance of Physical Plant</b>					
Administrative Faculty	2	2	3	3	4
Support Services - Classified	171	191	225	231	248
Support Services - Professional Faculty	0	0	0	1	1
TOTAL	173	193	228	235	253
GRAND TOTAL	1,527	1,628	1,706	1,779	1,875
Faculty Not E&G Funded	7	11	11	6	5

NOTE: Filled positions as of November 1, 2008.

SOURCE: Fall Personnel Census and Accounting Services.

TABLE 4-6

**ALL FULL-TIME FACULTY BY COLLEGE, TENURE STATUS,  
SEX AND ETHNICITY, FALL 2008**

TENURE STATUS	TOTAL	MALE	FEMALE	AFRICAN- AMERICAN	AMERICAN INDIAN	ASIAN/ PACIFIC ISL.	WHITE	HISPANIC	NR ALIEN	UN- REPORTED
College of Arts & Letters										
Tenured	108	68	40	4	0	3	95	3	1	2
Tenure Track	84	45	39	2	0	2	64	2	7	7
Nontenured	54	26	28	2	0	1	41	1	6	3
TOTAL	246	139	107	8	0	6	200	6	14	12
College of Business										
Tenured	67	50	17	2	0	3	58	0	0	4
Tenure Track	21	18	3	0	0	3	14	2	2	0
Nontenured	36	20	16	3	0	1	30	1	1	0
TOTAL	124	88	36	5	0	7	102	3	3	4
College of Education										
Tenured	17	3	14	1	0	0	15	1	0	0
Tenure Track	25	5	20	0	0	0	23	1	1	0
Nontenured	9	2	7	0	0	0	8	1	0	0
TOTAL	51	10	41	1	0	0	46	3	1	0
College of Integrated Science & Technology										
Tenured	104	59	45	4	1	1	95	1	1	1
Tenure Track	52	24	28	3	0	3	42	0	2	2
Nontenured	65	22	43	1	0	0	58	0	0	6
TOTAL	221	105	116	8	1	4	195	1	3	9
College of Science & Mathematics										
Tenured	71	57	14	0	0	2	68	0	0	1
Tenure Track	36	19	17	0	0	2	28	0	2	4
Nontenured	31	9	22	1	0	3	26	0	1	0
TOTAL	138	85	53	1	0	7	122	0	3	5
College of Visual & Performing Arts										
Tenured	59	37	22	1	0	3	55	0	0	0
Tenure Track	22	10	12	1	0	0	14	0	3	4
Nontenured	6	5	1	0	0	0	6	0	0	0
TOTAL	87	52	35	2	0	3	75	0	3	4

TABLE 4-6 CONTINUED

**ALL FULL-TIME FACULTY BY COLLEGE, TENURE STATUS,  
SEX AND ETHNICITY, FALL 2008**

TENURE STATUS	TOTAL	MALE	FEMALE	AFRICAN- AMERICAN	AMERICAN INDIAN	ASIAN/ PACIFIC ISL.	WHITE	HISPANIC	NR ALIEN	UN- REPORTED
Other										
Tenured	13	4	9	1	0	0	12	0	0	0
Tenure Track	5	3	2	0	0	0	5	0	0	0
Nontenured	12	2	10	2	0	0	9	0	0	1
TOTAL	30	9	21	3	0	0	26	0	0	1
INSTRUCTIONAL FACULTY										
TOTAL	897	488	409	28	1	27	766	13	27	35
Library Administrative & Professional										
Tenured	15	3	12	1	0	0	13	0	0	1
Tenure Track	4	0	4	0	0	0	4	0	0	0
Nontenured	8	4	4	0	0	0	8	0	0	0
TOTAL	27	7	20	1	0	0	25	0	0	1
Administrative & Professional (Non Library)										
Tenured	20	13	7	0	0	0	19	1	0	0
Tenure Track	2	1	1	0	0	0	2	0	0	0
Nontenured	387	183	204	25	1	3	336	1	4	17
TOTAL	409	197	212	25	1	3	357	2	4	17
ADMINISTRATIVE & PROFESSIONAL										
TOTAL	436	204	232	26	1	3	382	2	4	18
GRAND TOTAL	1,333	692	641	54	2	30	1,148	15	31	53

SOURCE: Fall Personnel Census and Academic Affairs.

TABLE 4-7

**INSTRUCTIONAL FACULTY BY EMPLOYMENT STATUS, COLLEGE  
AND DEPARTMENT, FALL 2008**

DEPARTMENT	FULL- TIME	PART- TIME	GTA <sup>1</sup>	OTHER <sup>2</sup>	TOTAL
College of Arts & Letters					
School of Communication Studies	39	2	0	1	42
English	26	20	4	2	52
Foreign Lang., Lit. & Cultures	20	44	0	0	64
History	32	12	11	2	57
Justice Studies	11	4	0	0	15
School of Media Arts & Design	21	2	0	3	26
Philosophy & Religion	21	7	0	2	30
Political Science	27	7	5	0	39
Sociology & Anthropology	22	2	0	0	24
School of Writing, Rhetoric & Tech. Comm.	27	13	8	5	53
COLLEGE TOTAL	246	113	28	15	402
College of Business	124	9	23	5	161
COLLEGE TOTAL	124	9	23	5	161
College of Education					
Dean's Office	1	0	1	0	2
Education Departments	50	64	14	14	142
COLLEGE TOTAL	51	64	15	14	144
College of Integrated Science & Technology					
CISAT Lab Operations	3	0	0	0	3
Communication Sciences & Disorders	14	4	1	0	19
Computer Science	17	0	4	1	22
Dean's Office	1	0	0	0	1
Health Sciences	36	3	9	4	52
Institute for Innovation in Health & Human Services	3	0	0	0	3
Integrated Science & Technology	49	4	16	0	69
Kinesiology	19	12	14	16	61
Nursing	26	2	1	0	29
Psychology	23	14	6	4	47
Psychology, Graduate	22	8	16	6	52
Social Work	8	3	0	1	12
COLLEGE TOTAL	221	50	67	32	370

TABLE 4-7 CONTINUED

**INSTRUCTIONAL FACULTY BY EMPLOYMENT STATUS, COLLEGE  
AND DEPARTMENT, FALL 2008**

DEPARTMENT	FULL- TIME	PART- TIME	GTA <sup>1</sup>	OTHER <sup>2</sup>	TOTAL
College of Science & Mathematics					
Biology	40	4	9	2	55
Chemistry & Biochemistry	20	6	0	4	30
Dean's Office	1	0	0	0	1
Geology & Environmental Science	15	2	0	0	17
Mathematics & Statistics	44	15	1	1	61
Physics & Astronomy	18	7	0	1	26
COLLEGE TOTAL	138	34	10	8	190
College of Visual & Performing Arts					
School of Art & Art History	29	16	7	5	57
School of Music	44	11	17	2	74
School of Theatre & Dance	14	9	0	2	25
COLLEGE TOTAL	87	36	24	9	156
Adult Degree Program	0	2	0	9	11
Center for Assessment & Research Studies	7	0	0	0	7
Cross Disciplinary Studies	0	2	0	0	2
School of Engineering	4	0	1	0	5
Center for Faculty Innovation	3	0	0	0	3
Furious Flower Poetry Center	2	0	0	0	2
Interdisciplinary Liberal Studies	1	0	0	0	1
International Education	1	0	0	0	1
Learning Resource Center	3	0	2	0	5
Outreach & Engagement	0	2	0	1	3
University Advising	3	0	0	0	3
University Studies	6	0	0	1	7
GRAND TOTAL	897	312	170	94	1,473

NOTE: Part-time faculty are reported once in the department for which they teach the most credit hours.

<sup>1</sup>"GTA" includes all graduate student positions in the departments.

<sup>2</sup>"OTHER" faculty include full-time administrators, intercollegiate athletics coaches, and classified staff who teach part-time in one of the instructional departments.

SOURCE: Fall Personnel Census and Student Administration System Data.

TABLE 4-8

**FULL-TIME CLASSIFIED STAFF BY EEO OCCUPATIONAL CATEGORY,  
SEX AND ETHNICITY, FALL 2008**

CATEGORY	AFRICAN- AMERICAN	AMERICAN INDIAN	ASIAN/ PACIFIC ISL.	HISPANIC	WHITE	NR ALIEN	UN- REPORTED	TOTAL
Administrators & Managers								
Male	0	0	0	0	6	0	0	6
Female	0	0	0	0	4	0	0	4
TOTAL	0	0	0	0	10	0	0	10
Office & Clerical								
Male	2	0	0	0	26	0	2	30
Female	1	0	2	2	280	0	4	289
TOTAL	3	0	2	2	306	0	6	319
Professional Nonfaculty								
Male	1	0	1	1	76	0	5	84
Female	2	0	1	1	180	1	3	188
TOTAL	3	0	2	2	256	1	8	272
Service/Maintenance								
Male	4	0	1	0	61	0	1	67
Female	5	0	1	2	163	0	4	175
TOTAL	9	0	2	2	224	0	5	242
Skilled Crafts								
Male	0	0	1	2	137	0	3	143
Female	0	0	0	0	3	0	1	4
TOTAL	0	0	1	2	140	0	4	147
Technicians & Paraprofessionals								
Male	2	0	1	1	126	1	9	140
Female	1	0	1	0	84	0	5	91
TOTAL	3	0	2	1	210	1	14	231
Total Classified Staff								
Male	9	0	4	4	432	1	20	470
Female	9	0	5	5	714	1	17	751
GRAND TOTAL	18	0	9	9	1,146	2	37	1,221

SOURCE: Fall Personnel Census.

# Facilities and Finance



TABLE 5-1

**BIENNIAL GENERAL FUND APPROPRIATIONS FOR OPERATING EXPENSES  
AND CAPITAL OUTLAY, 1972-74 - 2008-10**

BIENNIUM	OPERATING EXPENSES	CAPITAL OUTLAY
1972-74	\$ 10,526,000	\$ 3,740,780
1974-76	14,153,755	1,217,200
1976-78	20,241,600	145,620
1978-80 <sup>1</sup>	26,542,375	2,932,325
1980-82	33,687,955	2,583,850
1982-84	37,899,145	1,523,280
1984-86	43,156,920	8,210,600
1986-88	54,203,641	2,184,990
1988-90	65,086,881	12,744,995
1990-92 <sup>2</sup>	64,314,591	1,656,000
1992-94 <sup>1</sup>	57,351,203	34,310,787
1994-96	70,424,607	4,669,392
1996-98	83,908,588	1,239,505
1998-00	115,585,470	3,399,927
2000-02	138,638,018	3,206,668
2002-04 <sup>1</sup>	128,625,934	124,169,100
2004-06	129,713,843	0
2006-08	157,101,378	34,026,064
2008-10 <sup>1</sup>	168,569,834	67,951,000

NOTE: As appropriated at the beginning of the biennium. Includes financial aid. Does not include reversions, supplemental appropriations, reappropriations, or amounts allocated from central accounts.

<sup>1</sup>Includes funds authorized through general obligation bonds to be repaid by the General Fund.

<sup>2</sup>For 1990-92, the operating expenses appropriation is as contained in the revised 1991-92 Appropriation Act.

SOURCE: University Budget Management.

TABLE 5-2

**STATEMENT OF REVENUES, EXPENSES, AND CHANGES IN NET ASSETS,  
FISCAL YEARS 2005-06 - 2007-08**

REVENUES	2005-06	2006-07	2007-08
Tuition & Fees	\$ 95,374,085	\$ 104,849,675	\$ 116,453,199
Federal Operating Grants & Contracts	15,821,067	16,749,065	12,588,258
State Operating Grants & Contracts	5,372,128	6,872,375	6,848,436
Local/Private Operating Grants & Contracts	3,905,622	4,940,994	4,618,784
Auxiliary Enterprises	101,505,935	109,106,915	115,334,434
Other Operating Revenues	871,228	1,007,192	1,472,934
State Appropriations	73,440,683	75,806,060	82,810,149
Gifts	670,385	1,138,200	1,524,711
Investment Income	1,990,436	4,483,134	6,627,327
Other Nonoperating Revenues	0	0	4,363,043
Capital Appropriations	7,142,026	48,950,077	52,459,804
Capital Grants & Gifts	4,566,290	1,318,743	576,821
<b>TOTAL REVENUES</b>	<b>\$ 310,659,885</b>	<b>\$ 375,222,430</b>	<b>\$ 405,677,900</b>
*	*	*	*
EXPENSES & OTHER DEDUCTIONS	2005-06	2006-07	2007-08
Instruction	\$ 90,344,970	\$ 101,043,095	\$ 111,236,644
Research	4,801,752	5,818,110	5,922,628
Public Service	9,879,601	10,482,013	11,522,193
Academic Support	23,781,135	26,425,889	27,607,524
Student Services	8,798,994	10,901,736	12,527,005
Institutional Support	15,220,675	18,748,446	21,867,048
Operation & Maintenance of Plant	20,188,146	21,379,314	28,993,421
Scholarships & Fellowships	5,618,439	5,540,929	6,298,269
<b>TOTAL EDUCATIONAL &amp; GENERAL ESTIMATE</b>	<b>\$ 178,633,712</b>	<b>\$ 200,339,532</b>	<b>\$ 225,974,732</b>
Depreciation	\$ 19,529,873	\$ 20,989,921	\$ 18,536,650
Auxiliary Enterprises	80,306,853	85,130,925	90,314,477
Nonoperating Interest	3,374,989	3,518,375	4,092,175
Other Nonoperating Expenses & Deductions	1,471,595	1,342,759	787,568
<b>TOTAL EXPENSES &amp; DEDUCTIONS</b>	<b>\$ 283,317,022</b>	<b>\$ 311,321,512</b>	<b>\$ 339,705,602</b>
*	*	*	*
Increase in net assets	\$ 27,342,863	\$ 63,900,918	\$ 65,972,298
Net assets - beginning of year	313,877,444	336,321,494	400,222,412
<b>NET ASSETS - END OF YEAR</b>	<b>\$ 341,220,307</b>	<b>\$ 400,222,412</b>	<b>\$ 466,194,710</b>

SOURCE: IPEDS Finance Survey.

**TABLE 5-3**

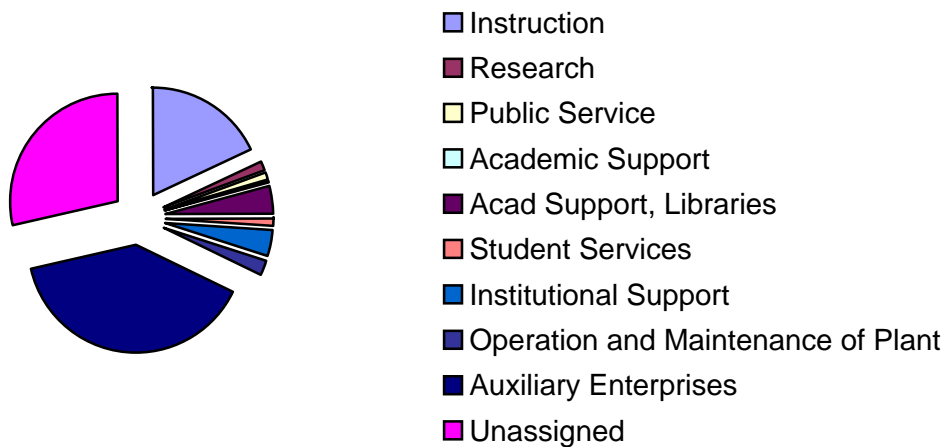
**INSTITUTIONAL SPACE PROFILE BY IPEDS FUNCTION, FALL 2008**

INTEGRATED POSTSECONDARY EDUCATION DATA SYSTEM FUNCTION	OWNED SQ FT	LEASED SQ FT	TOTAL SQ FT	OWNED ROOMS	LEASED ROOMS	TOTAL ROOMS
Instruction	690,973	30,221	721,194	2,832	74	2,906
Research	50,679	4,440	55,119	213	33	246
Public Service	34,149	9,227	43,376	216	70	286
Academic Support	10,373	2,094	12,467	51	4	55
Acad Support, Libraries	167,396	0	167,396	234	0	234
Student Services	40,330	875	41,205	243	1	244
Institutional Support	99,004	60,362	159,366	549	90	639
Operation and Maintenance of Plant	73,805	19,190	92,995	176	4	180
<b>TOTAL EDUCATIONAL &amp; GENERAL</b>	<b>1,166,709</b>	<b>126,409</b>	<b>1,293,118</b>	<b>4,514</b>	<b>276</b>	<b>4,790</b>
Auxiliary Enterprises	1,501,542	62,807	1,564,349	6,919	73	6,992
Unassigned	1,090,943	50,117	1,141,060	4,094	179	4,273
<b>GRAND TOTAL</b>	<b>3,759,194</b>	<b>239,333</b>	<b>3,998,527</b>	<b>15,527</b>	<b>528</b>	<b>16,055</b>

SOURCE: SCHEV Room Inventory as of October 1 each year.

**FIGURE 5-1**

**INSTITUTIONAL SPACE PROFILE, SQUARE FEET, FALL 2008**



SOURCE: SCHEV Room Inventory as of October 1 each year.

TABLE 5-4

**CONSOLIDATED STATEMENTS OF ACTIVITIES AND RESOURCE UTILIZATION,  
FISCAL YEARS 2006-07 - 2007-08**

REVENUE AND SUPPORT	June 30, 2008	June 30, 2007
Contributions	\$ 15,230,697	\$ 11,564,654
Investment Revenue (Loss)	(7,647,864)	8,079,843
In-Kind Support from JMU	2,265,037	2,162,752
Other Revenue	965,912	495,552
<b>TOTAL REVENUE AND SUPPORT</b>	<b>\$ 10,813,782</b>	<b>\$ 22,302,801</b>
<b>EXPENSES</b>		
Educational and General Programs	\$ 4,071,691	\$ 4,529,025
Auxiliary and Support Programs	828,403	713,078
Management and Administrative	354,885	348,851
Fund Raising	2,311,402	2,214,969
<b>TOTAL EXPENSES</b>	<b>\$ 7,566,381</b>	<b>\$ 7,805,923</b>
<b>CHANGE IN NET ASSETS</b>	<b>\$ 3,247,401</b>	<b>\$ 14,496,878</b>
<b>NET ASSETS - BEGINNING</b>	<b>73,117,930</b>	<b>58,621,052</b>
<b>NET ASSETS - JUNE 30</b>	<b>\$ 76,365,331</b>	<b>\$ 73,117,930</b>

**RESOURCE UTILIZATION**

TOTAL EXPENSES	UNRESTRICTED	RESTRICTED	ATHLETICS	TOTAL 2008	TOTAL 2007
Instruction	\$ 23,197	\$ 793,840	-	\$ 817,037	\$ 486,263
Research	10,047	4,390	-	14,437	9,817
Public Service	10,048	78,498	-	88,546	48,310
Academic Support	25,232	333,588	-	358,820	410,667
Student Support	20,220	44,119	-	64,339	70,563
Institutional Support	539,808	42,730	-	582,538	329,129
Plant Operation, Maintenance	375,100	3,279	-	378,379	1,487,760
Scholarships and Fellowships	318,481	1,002,189	\$ 446,925	1,767,595	1,686,516
JMU Support Groups	15,664	-	-	15,664	12,364
Intercollegiate Athletics	42,214	-	770,525	812,739	700,714
Foundation Management	354,885	-	-	354,885	348,851
Fund Raising	2,302,436	8,244	722	2,311,402	2,214,969
<b>TOTAL EXPENSES</b>	<b>\$ 4,037,332</b>	<b>\$ 2,310,877</b>	<b>\$ 1,218,172</b>	<b>\$ 7,566,381</b>	<b>\$ 7,805,923</b>

SOURCE: James Madison University Foundation, Inc., Annual Report.

**TABLE 5-5**

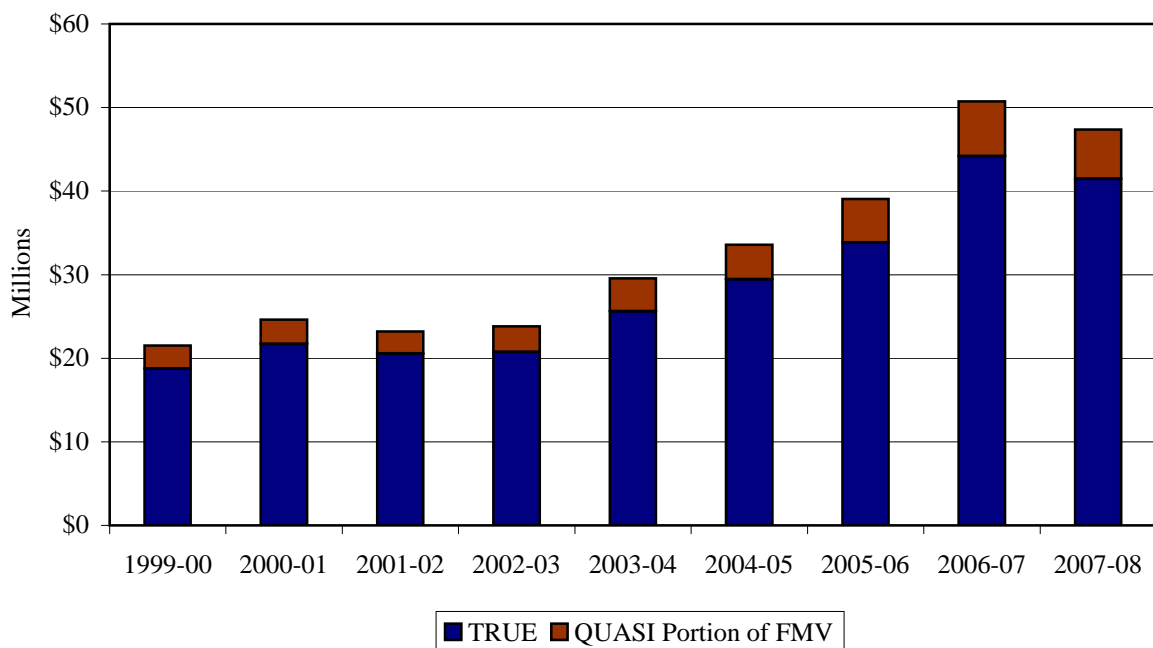
**FAIR MARKET VALUE OF ENDOWMENTS,  
FISCAL YEARS 1998-99 - 2007-08**

YEAR	TRUE	QUASI	TOTAL
1998-99	\$ 20,684,620	\$ 2,600,000	\$ 23,284,620
1999-00	18,759,461	2,759,613	21,519,074
2000-01	21,703,091	2,937,851	24,640,942
2001-02	20,583,839	2,616,989	23,200,828
2002-03	20,774,939	3,036,206	23,811,145
2003-04	25,633,806	3,927,881	29,561,687
2004-05	29,445,227	4,136,062	33,581,289
2005-06	33,860,441	5,212,932	39,073,373
2006-07	44,166,061	6,560,126	50,726,187
2007-08	41,479,841	5,891,447	47,371,288

SOURCE: James Madison University Foundation, Inc.

**FIGURE 5-2**

**FAIR MARKET VALUE OF ENDOWMENTS,  
FISCAL YEARS 1999-00 - 2007-08**



SOURCE: James Madison University Foundation, Inc.

# Alumni



TABLE 6-1

**EMPLOYMENT AND EDUCATION OF GRADUATES TWO YEARS OUT,  
2004-05 - 2006-07**

COLLEGE	2004-05	2005-06	2006-07
All Responding Bachelor Level Graduates			
Employment			
Full time n (%)	865 (79%)	220 (73%)	1114 (74%)
Salary Mean	\$42,636	\$43,149	\$42,900
Salary Median	\$42,000	\$45,001	\$41,499
Part time n (%)	97 (15%)	31 (10%)	155 (10%)
Student teaching	3%	3%	3%
Actively seeking employment	26%	9%	7%
Attending/completed Graduate School	35%	37%	31%
College of Arts & Letters			
Employment			
Full time n (%)	221 (79%)	55 (74%)	324 (74%)
Salary Mean	\$38,903	\$40,371	\$38,817
Salary Median	\$36,000	\$45,001	\$39,000
Part time n (%)	27 (17%)	8 (11%)	56 (13%)
Student teaching	2%	1%	2%
Actively seeking employment	36%	12%	7%
Attending/completed Graduate School	31%	28%	28%
College of Business			
Employment			
Full time n (%)	245 (94%)	61 (94%)	326 (88%)
Salary Mean	\$48,526	\$52,458	\$48,870
Salary Median	\$46,000	\$55,001	\$50,000
Part time n (%)	6 (4%)	3 (5%)	9 (2%)
Student teaching	2%	0%	1%
Actively seeking employment	18%	5%	5%
Attending/completed Graduate School	16%	14%	10%
College of Education			
Employment			
Full time n (%)	66 (91%)	23 (100%)	58 (91%)
Salary Mean	\$40,736	\$41,087	\$41,762
Salary Median	\$41,658	\$45,001	\$42,000
Part time n (%)	4 (13%)	0 (0%)	2 (3%)
Student teaching	3%	0%	0%
Actively seeking employment	18%	0%	0%
Attending/completed Graduate School	55%	22%	36%

TABLE 6-1 CONTINUED

**EMPLOYMENT AND EDUCATION OF GRADUATES TWO YEARS OUT,  
2004-05 - 2006-07**

COLLEGE	2004-05	2005-06	2006-07
College of Integrated Science & Technology			
Employment			
Full time n (%)	246 (71%)	52 (54%)	275 (64%)
Salary Mean	\$42,035	\$39,510	\$42,363
Salary Median	\$40,375	\$45,001	\$41,500
Part time n (%)	39 (18%)	18 (19%)	61 (14%)
Student teaching	4%	7%	5%
Actively seeking employment	24%	11%	8%
Attending/completed Graduate School	46%	60%	44%
College of Science & Mathematics			
Employment			
Full time n (%)	36 (54%)	18 (60%)	60 (58%)
Salary Mean	\$40,501	\$36,667	\$36,813
Salary Median	\$40,000	\$35,001	\$39,000
Part time n (%)	11 (20%)	1 (3%)	12 (12%)
Student teaching	4%	0%	5%
Actively seeking employment	22%	0%	7%
Attending/completed Graduate School	63%	47%	64%
College of Visual & Performing Arts			
Employment			
Full time n (%)	51 (75%)	11 (79%)	60 (67%)
Salary Mean	\$37,377	\$38,637	\$36,697
Salary Median	\$36,000	\$35,001	\$36,250
Part time n (%)	10 (23%)	1 (7%)	13 (14%)
Student teaching	0%	0%	3%
Actively seeking employment	33%	21%	8%
Attending/completed Graduate School	25%	36%	31%
Interdisciplinary			
Employment			
Full time n (%)	-	-	11 (79%)
Salary Mean	-	-	\$47,596
Salary Median	-	-	\$37,000
Part time n (%)	-	-	2 (14%)
Student teaching	-	-	0%
Actively seeking employment	-	-	7%
Attending/completed Graduate School	-	-	14%

NOTE: Generally, one percent or less of students are not actively seeking employment.

SOURCE: Alumni employment surveys of undergraduate completers two years after graduation.

TABLE 6-2

**FULL-TIME SALARY BY MAJOR OF GRADUATES TWO YEARS OUT,  
2004-05 - 2006-07 COMBINED**

COLLEGE	RESPONDENTS	MEAN	MEDIAN	MINIMUM	MAXIMUM
College of Arts & Letters					
Anthropology	9	\$ 32,000	\$ 29,000	\$ 12,000	\$ 60,000
Communication Studies	77	40,050	37,500	12,000	75,000
English	76	36,569	36,050	12,000	68,000
History	38	41,205	39,500	15,000	80,000
Interdisciplinary Social Science	28	40,147	39,500	10,000	75,000
International Affairs	22	43,880	40,800	12,000	82,000
Justice Studies	6	39,453	40,000	12,000	58,000
Media Arts & Design	100	37,696	37,050	10,000	98,000
Modern Foreign Languages	14	38,172	39,100	25,000	48,500
Philosophy & Religion	11	38,596	35,000	25,001	75,000
Political Science	53	38,615	37,000	15,000	70,000
Public Administration	27	40,515	40,000	24,000	68,000
Sociology	35	36,747	37,000	15,000	55,001
Technical & Scientific Communication	29	45,186	43,700	25,001	85,001
COLLEGE TOTAL	525	\$ 39,064	\$ 38,000	\$ 10,000	\$ 98,000
College of Business					
Accounting	107	\$ 53,376	\$ 55,000	\$ 15,000	\$ 75,000
Computer Information Systems	36	52,151	54,500	35,001	75,001
Economics	14	48,964	51,000	35,000	66,000
Economics (Business)	20	56,455	54,000	32,000	100,000
Finance	125	51,435	50,000	25,001	100,000
Hospitality & Tourism Management	47	40,051	40,000	13,000	62,000
International Business	32	46,693	45,000	10,000	100,000
Management	67	47,401	45,000	27,000	100,000
Marketing	121	45,338	45,000	16,000	95,000
Quantitative Finance	-	-	-	-	-
COLLEGE TOTAL	575	\$ 49,052	\$ 49,000	\$ 10,000	\$ 100,000
College of Education					
Business & Marketing Education	-	-	-	-	-
Interdisciplinary Liberal Studies	120	\$ 40,947	\$ 42,000	\$ 15,000	\$ 60,000
COLLEGE TOTAL	123	\$ 41,334	\$ 42,000	\$ 15,000	\$ 70,000

TABLE 6-2 CONTINUED

**FULL-TIME SALARY BY MAJOR OF GRADUATES TWO YEARS OUT,  
2004-05 - 2006-07 COMBINED**

COLLEGE	RESPONDENTS	MEAN	MEDIAN	MINIMUM	MAXIMUM
College of Integrated Science & Technology					
Athletic Training	-	-	-	-	-
Communication Sciences & Disorders	20	\$ 45,075	\$ 45,001	\$ 35,001	\$ 55,001
Computer Science	42	52,273	55,250	15,000	75,001
Dietetics	11	43,273	45,000	35,001	51,000
Geographic Science	21	38,494	39,000	20,000	61,000
Health Sciences	55	37,352	37,000	11,000	75,000
Health Services Administration	15	44,867	42,000	25,001	85,000
Integrated Science & Technology	87	49,955	50,000	14,000	100,000
Kinesiology	55	37,559	37,000	10,000	75,001
Nursing	56	51,028	49,000	35,001	85,000
Psychology	107	33,599	33,000	10,500	60,000
Recreation	7	33,000	28,000	21,000	45,001
Social Work	28	33,871	33,390	25,000	45,001
COLLEGE TOTAL	507	\$ 41,938	\$ 42,000	\$ 10,000	\$ 100,000
College of Science & Mathematics					
Biology	49	\$ 39,065	\$ 39,000	\$ 12,000	\$ 65,001
Chemistry	16	32,764	35,001	13,500	55,000
Geology	8	34,750	38,500	15,000	43,000
Mathematics	17	41,554	39,600	15,000	60,000
Physics	5	35,900	37,500	22,000	50,000
Statistics	-	-	-	-	-
COLLEGE TOTAL	96	\$ 38,410	\$ 38,000	\$ 12,000	\$ 85,001
College of Visual & Performing Arts					
Art	58	\$ 37,432	\$ 35,850	\$ 15,000	\$ 65,001
Art History	-	-	-	-	-
Music	27	37,456	36,500	20,000	65,000
Theatre & Dance	9	37,817	35,001	26,850	46,500
COLLEGE TOTAL	96	\$ 37,183	\$ 35,850	\$ 15,000	\$ 65,001
Interdisciplinary					
Individualized Study	16	\$ 41,611	\$ 35,438	\$ 24,000	\$ 80,000
COLLEGE TOTAL	16	41,611	35,438	24,000	80,000
GRAND TOTAL	1,938	\$ 42,819	\$ 42,000	\$ 10,000	\$ 100,000

NOTE: Majors with less than five respondents not revealed to protect confidentiality.  
"GRAND TOTAL" includes students from small cells and students with unknown majors.

SOURCE: Alumni employment surveys of undergraduate completers two years after graduation.