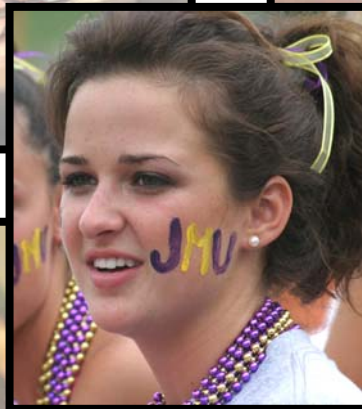


OFFICE OF INSTITUTIONAL RESEARCH
STATISTICAL SUMMARY
2006-07



INTRODUCTION

Since the first issue in 1973, the Statistical Summary has been updated annually to incorporate the latest information concerning the students, faculty, programs, finances, and facilities of James Madison University. Data were compiled from numerous sources to provide a valuable reference to the university community and beyond. These sources include datasets and reports prepared for state and federal government agencies, reports submitted to private organizations, internal reports produced by university offices, and summaries that were prepared especially for the Statistical Summary.

The Statistical Summary is also published on the World Wide Web for the twelfth year. All tables are posted to give you Internet access as soon as the information is available. This also keeps printing expenses down. The Web version is located at: http://www.jmu.edu/instresrch/statsum/2006_07/2006-07toc.shtml.

We respond to suggestions to improve the information in the Statistical Summary. Additions have been made to Tables 2-14 and 2-17 due to growth in online and summer off-campus courses. Table 2-14, summer credit hour production, is split into two tables, Table 2-14 On (campus) and Table 2-14 Off (campus). We have also added the production of online credit hours to Table 2-14 Off and Table 2-17, fall off-campus credit hour production.

Some other items of interest are:

- On-campus headcount grew by 2.6% or 424 students (Table 2-1).
- While the total number of males increased for the second year, the percentage of males continued to decline (Tables 2-2, 2-4 and Figure 2-1).
- Asian/Pacific Islanders continued to be the largest student minority group while African-American enrollment increased to its highest level since fall 2002 (Table 2-7).

The Statistical Summary is an example of teamwork at its best. The Institutional Research staff contributed in the following general ways, but everyone pitched in to see the work completed. Dr. Frank Doherty consulted with the Editor. Chuck DeHart edited the document and, with Rosemary Brenner, compiled and verified the data. Rosemary and Tina Grace coordinated the efforts of Orgil Burged and Julianna Nemitz (graduate assistants) that helped move the information to the Web and publish this hard copy. We all hope that the Statistical Summary will be useful in your work.

Chuck DeHart
Editor

TABLE OF CONTENTS
Chapter-Page

AN INTRODUCTION TO JAMES MADISON UNIVERSITY	I-1
Mission Statement	I-3
James Madison University Board of Visitors, 2006-07	I-3
James Madison University 2006-07 Facts and Figures	I-4
James Madison University Organizational Chart, September 2006.....	I-6
James Madison University Administration, September 2006	I-7
Deans, Academic Unit Heads and Carrier Library Administration, 2006-07	I-8
Explanation of Sources	I-10
STUDENT INFORMATION.....	II-1
TABLE 2-1 On-Campus Headcount, Fall 1969 – Fall 2006.....	II-3
TABLE 2-2 On-Campus Headcount by Sex, Fall 1979 – Fall 2006.....	II-5
TABLE 2-3 On-Campus Headcount by Residence, Fall 1979 – Fall 2006.....	II-6
TABLE 2-4 Headcount by Academic Level and Sex, Fall 2005 – Fall 2006	II-7
TABLE 2-5 Headcount by Academic Level and Full-Time/Part-Time Status, Fall 2005 – Fall 2006.....	II-8
TABLE 2-6 On-Campus Headcount by Age and Academic Level, Fall 2006.....	II-9
TABLE 2-7 Headcount by Ethnicity and Academic Level, Fall 2004 – Fall 2006.....	II-10
TABLE 2-8 On-Campus Headcount by Leading Geographical Sources, Fall 2006.....	II-13
TABLE 2-9 Headcount by Academic Level, Summer 1998 – Summer 2006.....	II-16
TABLE 2-10 On-Campus Credit Hour Production by Department, Fall 2004 – Fall 2006.....	II-17

TABLE 2-11	On-Campus Credit Hour Production by Student Level, Fall 2006.....	II-19
TABLE 2-12	On-Campus Credit Hours and Full-Time Equivalent Students by Level, Regular Session, 1995-96 – 2005-06	II-21
TABLE 2-13	On-Campus Credit Hour Production by Department, Summer 2003 – Summer 2006	II-22
TABLE 2-14 ON	On-Campus Credit Hour Production by Department and Student Level, Summer 2006	II-24
TABLE 2-14 OFF	Off-Campus Credit Hour Production by Department and Student Level, Summer 2006	II-26
TABLE 2-15	On-Campus Credit Hours and Full-Time Equivalent Students by Level, Summer 1996 – Summer 2006	II-28
TABLE 2-16	On and Off-Campus Headcount, Fall 1995 – Fall 2006.....	II-29
TABLE 2-17	Off-Campus Credit Hour Production by Student Level, Fall 2006.....	II-30
TABLE 2-18	Undergraduate Admission Applications, Fall 2002 – Fall 2006.....	II-31
TABLE 2-19	Entering Freshman Class Average SAT Scores, Fall 1990 – Fall 2006.....	II-33
TABLE 2-20	Entering Freshman Class SAT Score Distribution by Sex, Fall 2006.....	II-34
TABLE 2-21	Grade Distribution by College and Course Level, Fall 2006.....	II-35
TABLE 2-22	Undergraduate Median Cumulative Grade Point Averages by Sex, End of Spring in Alternate Years, 1990-91 – 2004-05.....	II-36
TABLE 2-23	Headcount by Graduate Student Levels, Fall 2006.....	II-37
TABLE 2-24	Full-Time Equivalent Students by Session, 1982-83 – 2005-06.....	II-38
TABLE 2-25	Graduation Rates for Fall Entering Freshman Class, 1983 – 2002	II-39

TABLE 2-26	Return Rates for Fall Entering Freshman Class, 1989 – 2005.....	II-40
TABLE 2-27	Non-Resident Alien Headcount by Country and Academic Level, Fall 2006.....	II-41

ACADEMIC DEPARTMENTS AND DEGREE PROGRAMS..... III-1

TABLE 3-1	Degree Programs Approved by the State Council of Higher Education, 2006-07	III-3
TABLE 3-2	Degrees Conferred Totals, 1991-92 – 2005-06	III-5
TABLE 3-3	Bachelor's Degrees Conferred by First Major and CIP Code, 2002-03 – 2005-06	III-6
TABLE 3-4	Bachelor's Degrees Conferred by Second Major and CIP Code, 2005-06.....	III-8
TABLE 3-5	Graduate Degrees Conferred by Major and CIP Code, 2002-03 – 2005-06	III-9
TABLE 3-6	Degrees Conferred History by Degree level, 1909 – 2006	III-10
TABLE 3-7	Education Students Completing Endorsements for the Collegiate Professional, Post Graduate Professional, or Advanced License, 2005-06.....	III-12
TABLE 3-8	Library Collections and Services, 2001-02 – 2005-06.....	III-14
TABLE 3-9	On and Off-Campus First Majors by College and Full-Time/Part- Time Status, Fall 2006.....	III-15
TABLE 3-10	On and Off-Campus First Majors by Race, Fall 2006.....	III-18
TABLE 3-11	On and Off-Campus First Majors by College, Fall 2001 – Fall 2006	III-21
TABLE 3-12	On and Off-Campus First Majors by College, Sex, and Full- Time/Part-Time Status, Fall 2006	III-24
TABLE 3-13	Teacher Licensure Programs Headcount by SCHEV Program Description, Fall 2006.....	III-25

FACULTY AND STAFF	IV-1
TABLE 4-1 Full-Time Instructional Faculty by Department and Tenure, Fall 2006.....	IV-3
TABLE 4-2 Full-Time Instructional Faculty by Sex and Terminal Degree, Fall 2006.....	IV-5
TABLE 4-3 All Full-Time Faculty by Doctorate Source, Fall 2006.....	IV-7
TABLE 4-4 Full-Time Instructional Faculty, Average Academic Term Salary and Compensation by Rank, 2002-03 – 2006-07	IV-8
TABLE 4-5 Full-Time Educational and General Staff by Functional Category, Fall 2002 – Fall 2006.....	IV-10
TABLE 4-6 All Full-Time Faculty by College, Tenure Status, Sex and Ethnicity, Fall 2006.....	IV-11
TABLE 4-7 Instructional Faculty by Employment Status, College, and Department, Fall 2006.....	IV-13
TABLE 4-8 Full-Time Classified Staff by EEO Occupational Category, Sex and Ethnicity, Fall 2006	IV-15
FACILITIES AND FINANCE.....	V-1
TABLE 5-1 Biennial General Fund Appropriations for Operating Expenses and Capital Outlay, 1972-74 – 2006-08.....	V-3
TABLE 5-2 Statement of Revenues, Expenses, and Changes in Net Assets, Fiscal Years 2003-04 – 2005-06	V-4
TABLE 5-3 Institutional Space Profile, Fall 2006.....	V-5
TABLE 5-4 Consolidated Statements of Activities and Resource Utilization, Fiscal Years 2004-05 – 2005-06	V-6
TABLE 5-5 Fair Market Value of Endowments, Fiscal Years 1996-97 – 2005-06	V-7

TABLE OF FIGURES

FIGURE 2-1	On-Campus Headcount, Fall 1996 – Fall 2006.....	II-4
FIGURE 2-2	On-Campus Headcount, Fall 2006.....	II-4
FIGURE 2-3	African-American Student Headcount, Fall 1997 – Fall 2006.....	II-12
FIGURE 2-4	Entering Freshman Class Headcount by Sex, Fall 1993 – Fall 2006.....	II-12
FIGURE 2-5	Virginia Students at JMU, Fall 2006.....	II-14
FIGURE 2-6	On-Campus Students by Three-Digit Zip Code, Fall 2006.....	II-15
FIGURE 2-7	Total Headcount, Fall 1997 – Fall 2006.....	II-29
FIGURE 2-8	Entering Freshman Class Applications by Sex, Fall 2006.....	II-32
FIGURE 2-9	Entering Freshman Class Average SAT Scores, Fall 1996 – Fall 2006.....	II-32
FIGURE 2-10	Undergraduate Grade Distribution, Fall 2006.....	II-36
FIGURE 2-11	Non-Resident Aliens by Country, Fall 2006.....	II-43
FIGURE 3-1	Degrees Conferred, 1996-97 – 2005-06.....	III-5
FIGURE 4-1	Instructional Faculty, Average Salary by Rank, Fall 2006.....	IV-9
FIGURE 5-1	Institutional Space Profile, Fall 2006.....	V-5
FIGURE 5-2	Fair Market Value of Endowments, Fiscal Years 1997-98 – 2005-06.....	V-7

An Introduction to James Madison University



MISSION STATEMENT

We are a community committed to preparing students to be educated and enlightened citizens who lead productive and meaningful lives.

**JAMES MADISON UNIVERSITY BOARD OF VISITORS,
2006-07**

Joseph F. Damico - Rector

Meredith Strohm Gunter - Vice Rector

Donna L. Harper - Secretary

Mark T. Bowles

James Scott Bridgeforth

Ronald C. Devine

Lois J. Forbes

Charles H. Foster, Jr.

John "Chubby" Grover

James E. "Jim" Hartman

Stephen R. Leeolou

E. Ray Murphy

Wharton B. Rivers, Jr.

Larry M. Rogers

Judith "Judy" Strickler

Linda Zecher

Stacy Fuller, student member

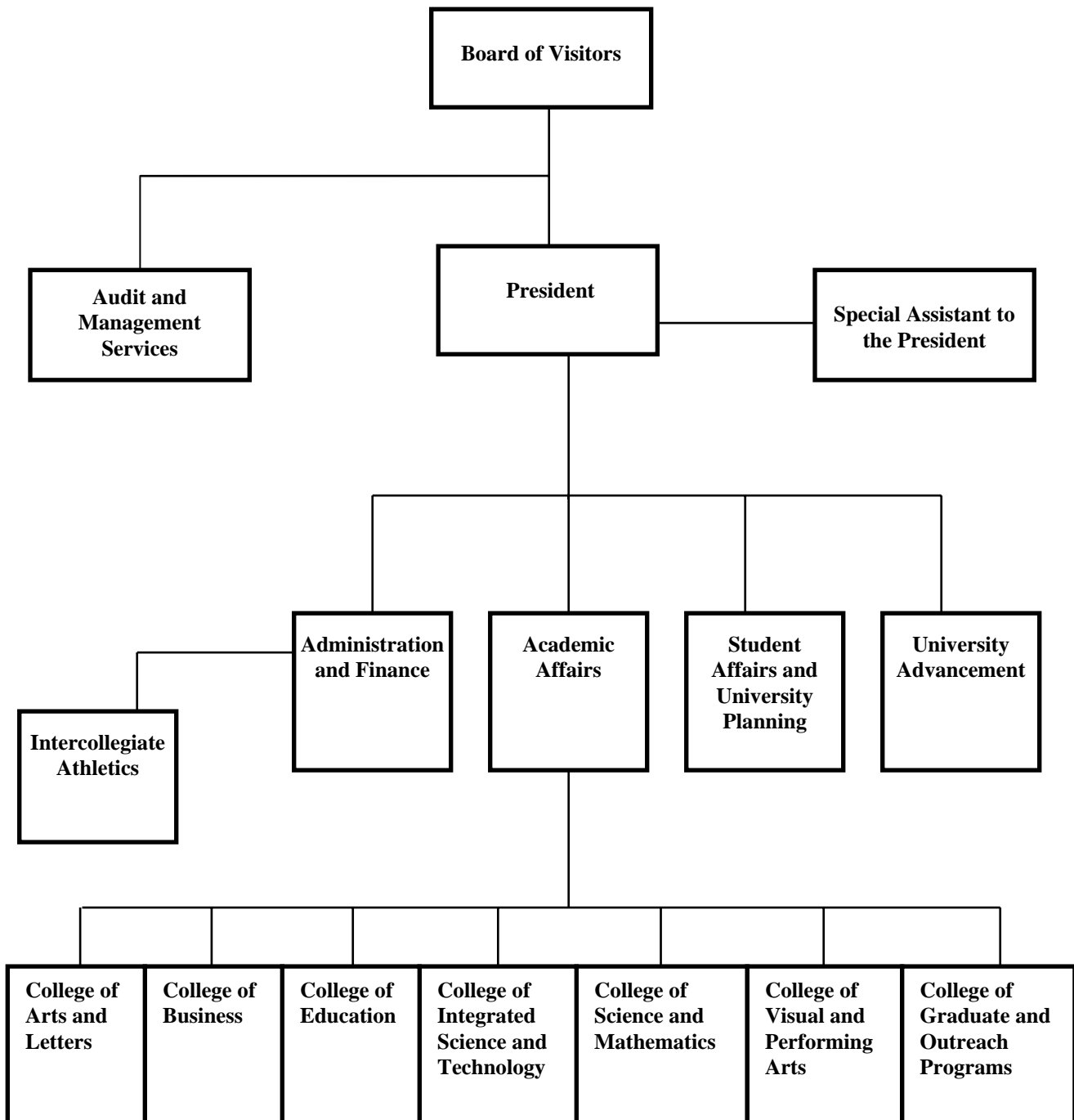
**JAMES MADISON UNIVERSITY
2006-07 FACTS AND FIGURES**

HISTORY	<p>1908 Established by the Virginia General Assembly as the State Normal and Industrial School for Women at Harrisonburg.</p> <p>1914 Name changed to the State Normal School for Women at Harrisonburg.</p> <p>1924 Name changed to the State Teachers College at Harrisonburg.</p> <p>1938 Name changed to Madison College in honor of the fourth President of the United States.</p> <p>1966 By action of the Virginia General Assembly, became a coeducational institution.</p> <p>1977 Name changed to James Madison University.</p>								
CAMPUS SIZE	655 acres, including 31 acres at the University Farm.								
ACADEMIC DIVISIONS	<p>College of Arts and Letters</p> <p>College of Business</p> <p>College of Education</p> <p>College of Integrated Science and Technology</p> <p>College of Science and Mathematics</p> <p>College of Visual and Performing Arts</p> <p>College of Graduate and Outreach Programs</p>								
BUILDINGS	<table border="0" style="width: 100%;"> <tr> <td>Educational & General (Academic/Administrative)</td> <td style="text-align: right;">55</td> </tr> <tr> <td>Auxiliary (Campus Center, Recreation, Dining, Cultural, etc.)</td> <td style="text-align: right;">14</td> </tr> <tr> <td>Student Housing</td> <td style="text-align: right;">33</td> </tr> <tr> <td>Total</td> <td style="text-align: right;">102</td> </tr> </table>	Educational & General (Academic/Administrative)	55	Auxiliary (Campus Center, Recreation, Dining, Cultural, etc.)	14	Student Housing	33	Total	102
Educational & General (Academic/Administrative)	55								
Auxiliary (Campus Center, Recreation, Dining, Cultural, etc.)	14								
Student Housing	33								
Total	102								
BUILDINGS UNDER CONSTRUCTION	<table border="0" style="width: 100%;"> <tr> <td>CISAT Library</td> <td style="text-align: right;">\$26.0 million</td> </tr> <tr> <td>Center for Performing Arts</td> <td style="text-align: right;">\$75.6 million</td> </tr> </table>	CISAT Library	\$26.0 million	Center for Performing Arts	\$75.6 million				
CISAT Library	\$26.0 million								
Center for Performing Arts	\$75.6 million								
CONVOCATION CENTER	A 7,300 seat, \$10.8 million sports and entertainment arena designed for basketball, concerts, and other sports and entertainment events.								
ATHLETIC PROGRAM	More than 500 student athletes compete in 13 men's and 15 women's sports including archery, baseball, basketball, cross-country/track, fencing, field hockey, football, golf, gymnastics, lacrosse, soccer, softball, swimming/diving, tennis, volleyball, and wrestling.								
TOTAL OPERATING BUDGET 2006-07	Educational & General, Auxiliary Enterprises, Financial Aid, and Sponsored Programs \$330,192,082								

**JAMES MADISON UNIVERSITY
2006-07 FACTS AND FIGURES CONTINUED**

ON AND OFF-CAMPUS ENROLLMENT FALL 2006	Total Enrollment	17,393
	Undergraduate	15,653
	Graduate	1,138
	Non-Degree Seeking Undergraduate	360
	Non-Degree Seeking Graduate	242
	Full-Time	16,033
	Part-Time	1,360
	Percent Male	39%
	Percent Female	61%
	Percent In-State	71%
	Percent Out-of-State	29%
	Percent Minority	11%
Percent African-American	4%	
UNIVERSITY HOUSING ON-CAMPUS FULL-TIME UNDERGRADUATES	Residence Halls Population	5,780
	Percent Residence Halls	38%
	Percent Commuting Students	62%
ENTERING FRESHMAN CLASS 2006	Number Enrolled	3,748
	Average SAT Score	1,140
DEGREES CONFERRED 2005-06	Undergraduate	3,501
	Graduate	526
FACULTY & STAFF FALL 2006	Full-Time	2,359
	Instructional & Research Faculty	831
	Administrative & Professional Faculty	382
	Classified Staff	1,146
	Percent Tenured Faculty	49%
	Percent Female Faculty	43%
	Average Faculty Salary	\$65,550
	Part-Time	
Instructional Faculty	300	
TUITION & FEES 2006-07	In-State	\$6,290
	Out-of-State	\$16,236
ROOM & BOARD (per year)	Room and Board	\$6,496
SCHOLARSHIPS & GRANTS 2006-07	Percent of Undergraduate Students Receiving Aid	24%
	Range of Annual Awards	\$17-\$25,200
	Total	\$19,221,976
LOANS 2006-07	Percent of Undergraduate Students Receiving Aid	35%
	Range of Annual Awards	\$111-\$10,500
	Total	\$23,345,722

**JAMES MADISON UNIVERSITY
ORGANIZATIONAL CHART,
SEPTEMBER 2006**



**JAMES MADISON UNIVERSITY ADMINISTRATION,
SEPTEMBER 2006**

President	Linwood H. Rose
Executive Assistant to the President.....	Donna L. Harper
Special Assistant to the President	Daniel A. Wubah
Provost and Vice President for Academic Affairs	Douglas T. Brown
Associate Vice President for Academic Program Support	Teresa A. Gonzalez
Associate Vice President for Research & Public Service.....	John B. Noftsinger
Associate Vice President for Assessment & Public Policy	T. Dary Erwin
Associate Vice President for Student Success	Randy L. Mitchell*
Assistant Vice President for Academic Resources	J.W. Myers
Assistant Vice President for International Programs	Lee G. Sternberger
*Joint Appointment with Student Affairs	
Senior Vice President for Administration & Finance	Charles W. King
Associate Vice President for Business Services	Towana H. Moore
Assistant Vice President for Finance	John F. Knight
Assistant Vice President for Information Technology	Dale B. Hulvey
Assistant Vice President for Budget Management	Diane L. Stamp
Assistant Vice President for Human Resources, Training & Performance	Brian J. Charette
Director of Athletics.....	Jeffrey T. Bourne
Associate Athletic Director.....	Shelia A. Moorman
Associate Athletic Director.....	Geoffrey H. Polglase
Associate Athletic Director.....	Linda Casey Carter
Senior Vice President for University Advancement	Joanne B. Carr
Associate Vice President for Development	Weston W. Hatfield
Associate Vice President for Constituent Relations	C. Steven Smith
Associate Vice President for Communications & Marketing.....	Andrew D. Perrine
Associate Vice President for Information Services	Cheryl D. Harrelson
Senior Vice President for Student Affairs, University Planning	Mark J. Warner
Associate Vice President for Multicultural Awareness & Student Health... ..	Marsha Mays-Bernard
Associate Vice President for Student Success	Randy L. Mitchell*
Associate Vice President for Student Life	Zebulun R. Davenport
Associate Vice President for University Planning & Analysis	Alfred J. Menard
*Joint Appointment with Academic Affairs	
Director of Audit & Management Services	Larry L. Holsinger

**DEANS, ACADEMIC UNIT HEADS,
AND CARRIER LIBRARY ADMINISTRATION,
2006-07**

College of Arts & Letters

Dean..... David K. Jeffrey

Academic Unit Heads

Center for Liberal & Applied Social Sciences Glenn Hastedt
 English Robert V. Hoskins
 Foreign Languages & Literatures Giuliana Fazzion
 History..... Michael J. Galgano
 Institute for Technical & Scientific Communication..... Alice I. Philbin
 Philosophy & Religion..... William J. Hawk
 Political Science..... Kay M. Knickrehm
 School of Communication Studies..... Eva M. McMahan
 School of Media Arts & Design..... George C. Johnson
 Sociology & Anthropology H. B. Cavalcanti
 Writing Program..... Shelley B. Aley

College of Business

Dean..... Robert D. Reid

Associate Dean for Human Resources & Administration Kimberley A. Foreman
 Associate Dean for Student Services Joyce W. Guthrie
 Associate Dean for Academic Programs..... Philip B. DuBose
 Associate Dean for External Relations Bradley M. Roof

Academic Unit Heads

Accounting Paul A. Copley
 Economics Ehsan Ahmed
 Finance & Business Law..... Marion M. White, Interim
 Hospitality & Tourism Management Brett W. Horton
 Computer Information Systems & Management Science..... Richard G. Mathieu
 International Business Marion M. White
 Management..... Paula S. Daly
 Marketing..... Irvine Clarke, III

**DEANS, ACADEMIC UNIT HEADS,
AND CARRIER LIBRARY ADMINISTRATION,
2006-07, CONTINUED**

College of Education

Dean	Phillip M. Wishon
Associate Dean.....	Steven H. Fairchild
Associate Dean.....	Margaret B. Shaeffer

Academic Unit Heads

Early, Elementary & Reading Education.....	Martha Ross
Exceptional Education.....	Maggie Kyger
Learning, Technology & Leadership Education.....	Diane Foucar-Szocki
Middle, Secondary & Mathematics Education.....	Lou Ann Lovin
Military Science.....	Dominic D. Swayne

College of Integrated Science & Technology

Dean	A. Jerry Benson
Associate Dean.....	Sharon E. Lovell

Academic Unit Heads

Communication Sciences & Disorders.....	Vicki A. Reed
Computer Science.....	Malcolm G. Lane
Health Sciences.....	Robert E. Koslow
Integrated Science & Technology.....	Ronald G. Kander
Kinesiology.....	Michael S. Goldberger
Nursing.....	Merle E. Mast
Psychology.....	Michael L. Stoloff
Psychology, Graduate.....	Sheena J. Rogers
Social Work.....	R. Ann Myers

College of Science & Mathematics

Dean	David F. Brakke
Associate Dean.....	Judith A. Dilts
Assistant Dean.....	J. Robert Hanson

Academic Unit Heads

Biology.....	Louise M. Temple-Rosebrook
Chemistry.....	Donna S. Amenta
Geology & Environmental Science.....	Judith A. Dilts, Interim
Mathematics & Statistics.....	David C. Carothers
Physics.....	C. Steven Whisnant

**DEANS, ACADEMIC UNIT HEADS,
AND CARRIER LIBRARY ADMINISTRATION,
2006-07, CONTINUED**

College of Visual & Performing Arts

Dean..... Marilou M. Johnson, Interim

Academic Unit Heads

School of Art & Art History Leslie M. Bellavance

School of Music Jeffrey A. Showell

School of Theatre & Dance William J. Buck

Carrier Library

Dean of Libraries & Educational TechnologiesRalph A. Alberico

College of Graduate & Outreach Programs

Dean..... Reid J. Linn

Associate Dean James M. Shaeffer, Sr.

Assistant Dean Katherine B. Thompson

University Studies

Dean..... Linda Cabe Halpern

Associate DeanHerbert K. Amato

Associate Dean Karyn Z. Sproles

EXPLANATION OF SOURCES

Data for the Statistical Summary were gathered from a variety of sources, including internal statistical reports, the Student Administration, Human Resources and Finance computing systems, reports sent by the Office of Institutional Research to state and federal government agencies, and from other JMU departments. The source(s) is(are) listed at the end of each table. Wherever possible, tables contain the same data used for reports to the State Council of Higher Education for Virginia (SCHEV) and to the federal government via the Integrated Postsecondary Education Data System (IPEDS).

Please direct any questions about the sources of data or methodology to the Office of Institutional Research. It is important for us to know that you understand this information as well as possible.

Student Information

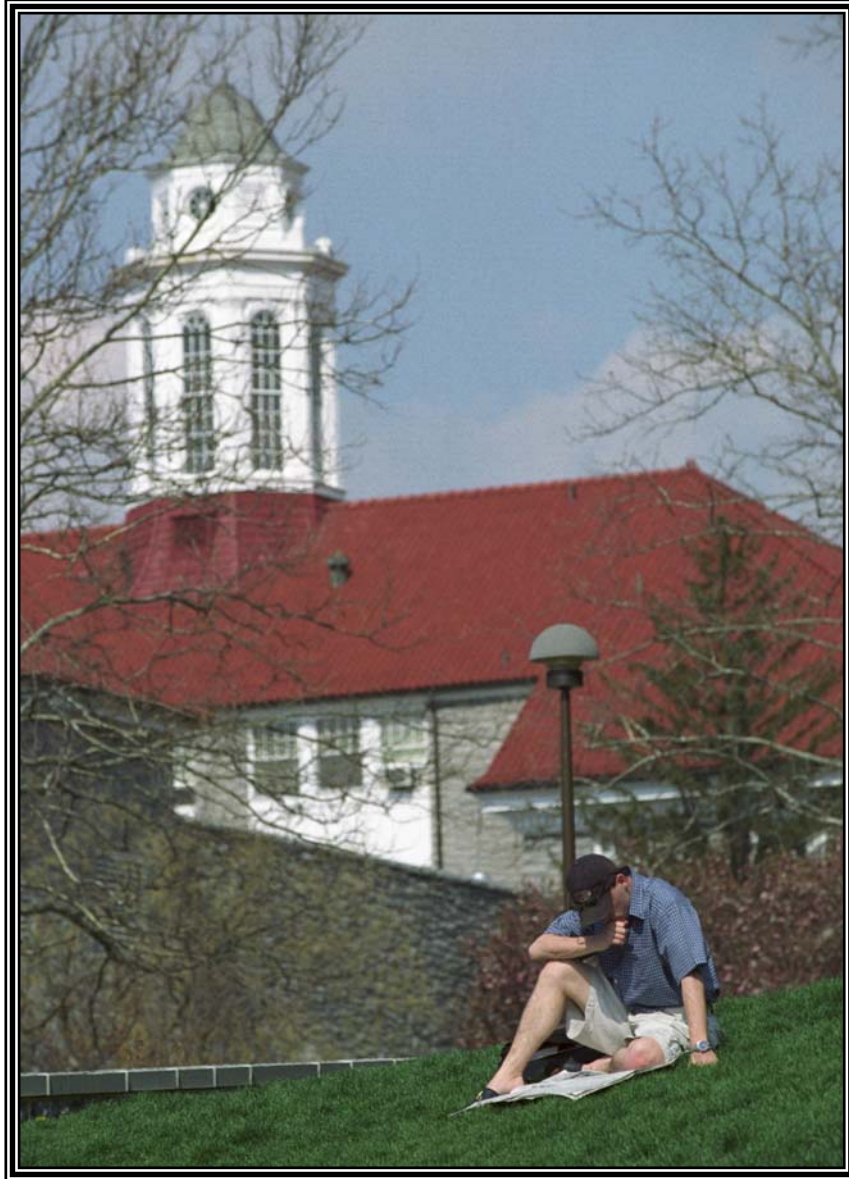
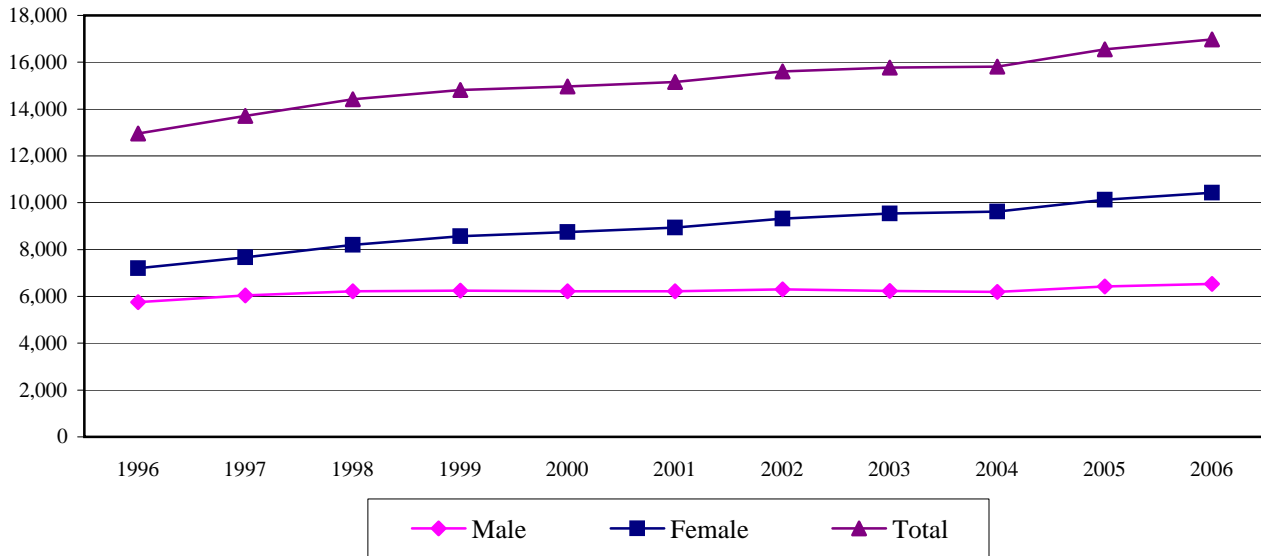


TABLE 2-1
ON-CAMPUS HEADCOUNT,
FALL 1969 - FALL 2006

FALL SEMESTER	ENROLLMENT	PERCENT CHANGE
1969-70	3,816	--
1970-71	4,041	5.9%
1971-72	4,562	12.9%
1972-73	5,492	20.4%
1973-74	6,288	14.5%
1974-75	6,841	8.8%
1975-76	7,343	7.3%
1976-77	7,659	4.3%
1977-78	7,926	3.5%
1978-79	8,073	1.9%
1979-80	8,387	3.9%
1980-81	8,817	5.1%
1981-82	8,970	1.7%
1982-83	9,048	0.9%
1983-84	9,242	2.1%
1984-85	9,320	0.8%
1985-86	9,580	2.8%
1986-87	9,757	1.8%
1987-88	10,126	3.8%
1988-89	10,525	3.9%
1989-90	10,709	1.7%
1990-91	11,011	2.8%
1991-92	11,264	2.3%
1992-93	11,203	(0.5%)
1993-94	11,354	1.4%
1994-95	11,539	1.6%
1995-96	11,927	3.4%
1996-97	12,963	8.7%
1997-98	13,714	5.8%
1998-99	14,414	5.1%
1999-00	14,814	2.8%
2000-01	14,961	1.0%
2001-02	15,152	1.3%
2002-03	15,612	3.0%
2003-04	15,769	1.0%
2004-05	15,809	0.3%
2005-06	16,546	4.7%
2006-07	16,970	2.6%

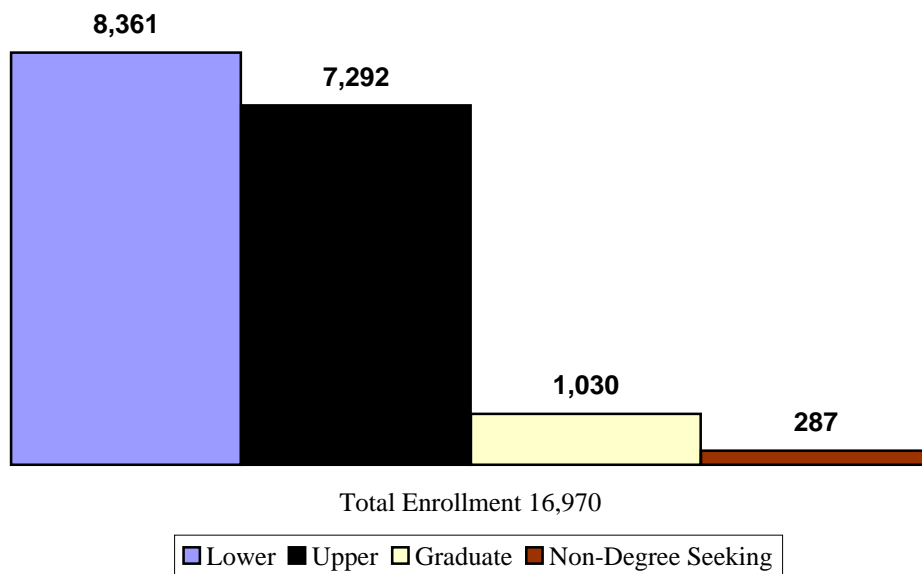
SOURCE: Fall Student Census.

FIGURE 2-1
ON-CAMPUS HEADCOUNT,
FALL 1996 - FALL 2006



SOURCE: Fall Student Census.

FIGURE 2-2
ON-CAMPUS HEADCOUNT,
FALL 2006



SOURCE: Fall Student Census.

TABLE 2-2
ON-CAMPUS HEADCOUNT BY SEX,
FALL 1979 - FALL 2006

FALL SEMESTER	MALE	PERCENT	FEMALE	PERCENT
1979-80	3,857	46.0%	4,530	54.0%
1980-81	3,964	45.0%	4,853	55.0%
1981-82	4,013	44.7%	4,957	55.3%
1982-83	4,097	45.3%	4,951	54.7%
1983-84	4,137	44.8%	5,105	55.2%
1984-85	4,107	44.1%	5,213	55.9%
1985-86	4,197	43.8%	5,383	56.2%
1986-87	4,195	43.0%	5,562	57.0%
1987-88	4,410	43.6%	5,716	56.4%
1988-89	4,605	43.8%	5,920	56.2%
1989-90	4,738	44.2%	5,971	55.8%
1990-91	4,888	44.4%	6,123	55.6%
1991-92	4,964	44.1%	6,300	55.9%
1992-93	4,945	44.1%	6,258	55.9%
1993-94	4,987	43.9%	6,367	56.1%
1994-95	5,159	44.7%	6,380	55.3%
1995-96	5,338	44.8%	6,589	55.2%
1996-97	5,754	44.4%	7,209	55.6%
1997-98	6,045	44.1%	7,669	55.9%
1998-99	6,216	43.1%	8,198	56.9%
1999-00	6,246	42.2%	8,568	57.8%
2000-01	6,218	41.6%	8,743	58.4%
2001-02	6,215	41.0%	8,937	59.0%
2002-03	6,296	40.3%	9,316	59.7%
2003-04	6,232	39.5%	9,537	60.5%
2004-05	6,187	39.1%	9,622	60.9%
2005-06	6,422	38.8%	10,124	61.2%
2006-07	6,535	38.5%	10,435	61.5%

SOURCE: Fall Student Census.

TABLE 2-3
ON-CAMPUS HEADCOUNT BY RESIDENCE,
FALL 1979 - FALL 2006

FALL SEMESTER	IN-STATE	PERCENT	OUT-OF-STATE	PERCENT
1979-80	6,799	81.1%	1,588	18.9%
1980-81	7,096	80.5%	1,721	19.5%
1981-82	7,118	79.4%	1,852	20.6%
1982-83	7,145	79.0%	1,903	21.0%
1983-84	7,234	78.3%	2,008	21.7%
1984-85	7,301	78.3%	2,019	21.7%
1985-86	7,445	77.7%	2,135	22.3%
1986-87	7,504	76.9%	2,253	23.1%
1987-88	7,783	76.9%	2,343	23.1%
1988-89	8,149	77.4%	2,376	22.6%
1989-90	8,389	78.3%	2,320	21.7%
1990-91	8,554	77.7%	2,457	22.3%
1991-92	8,707	77.3%	2,557	22.7%
1992-93	8,568	76.5%	2,635	23.5%
1993-94	8,535	75.2%	2,819	24.8%
1994-95	8,505	73.7%	3,034	26.3%
1995-96	8,584	72.0%	3,343	28.0%
1996-97	9,062	69.9%	3,901	30.1%
1997-98	9,499	69.3%	4,215	30.7%
1998-99	10,056	69.8%	4,358	30.2%
1999-00	10,489	70.8%	4,325	29.2%
2000-01	10,583	70.7%	4,378	29.3%
2001-02	10,702	70.6%	4,450	29.4%
2002-03	11,089	71.0%	4,523	29.0%
2003-04	11,081	70.3%	4,688	29.7%
2004-05	11,254	71.2%	4,555	28.8%
2005-06	11,685	70.6%	4,861	29.4%
2006-07	11,961	70.5%	5,009	29.5%

SOURCE: Fall Student Census.

TABLE 2-4
HEADCOUNT BY ACADEMIC LEVEL AND SEX,
FALL 2005 - FALL 2006

ACADEMIC LEVEL	2005			2006		
ON-CAMPUS	Male	Female	Total	Male	Female	Total
Freshman (First-time & Other)	1,580	2,611	4,191	1,566	2,701	4,267
Sophomore	1,479	2,342	3,821	1,605	2,489	4,094
Junior	1,470	2,121	3,591	1,507	2,165	3,672
Senior	1,491	2,188	3,679	1,437	2,183	3,620
Undergraduate Degree Seeking Total	6,020	9,262	15,282	6,115	9,538	15,653
Graduate	284	574	858	315	608	923
Advanced Graduate	20	81	101	20	87	107
Graduate Degree Seeking Total	304	655	959	335	695	1,030
Non-degree Seeking Undergraduate	62	116	178	63	118	181
Non-degree Seeking Graduate	36	91	127	22	84	106
Non-degree Seeking Total	98	207	305	85	202	287
ON-CAMPUS TOTAL	6,422	10,124	16,546	6,535	10,435	16,970
OFF-CAMPUS	Male	Female	Total	Male	Female	Total
Undergraduate Degree Seeking Total	2	3	5	0	0	0
Graduate Degree Seeking Total	79	29	108	88	20	108
Non-degree Seeking Undergraduate	87	66	153	90	89	179
Non-degree Seeking Graduate	30	96	126	31	105	136
OFF-CAMPUS TOTAL	198	194	392	209	214	423
ON AND OFF-CAMPUS	Male	Female	Total	Male	Female	Total
Undergraduate Degree Seeking Total	6,022	9,265	15,287	6,115	9,538	15,653
Graduate Degree Seeking Total	383	684	1,067	423	715	1,138
Non-degree Seeking Undergraduate	149	182	331	153	207	360
Non-degree Seeking Graduate	66	187	253	53	189	242
ON AND OFF-CAMPUS TOTAL	6,620	10,318	16,938	6,744	10,649	17,393

NOTE: "Non-degree Seeking" is synonymous with "Special" or "Unclassified."

SOURCE: Fall Student Census.

TABLE 2-5

**HEADCOUNT BY ACADEMIC LEVEL AND FULL-TIME/PART-TIME STATUS,
FALL 2005 - FALL 2006**

ACADEMIC LEVEL	2005			2006		
	Full-Time	Part-Time	Total	Full-Time	Part-Time	Total
ON-CAMPUS						
Freshman (First-time & Other)	4,172	19	4,191	4,238	29	4,267
Sophomore	3,767	54	3,821	4,049	45	4,094
Junior	3,479	112	3,591	3,556	116	3,672
Senior	3,399	280	3,679	3,353	267	3,620
Undergraduate Degree Seeking Total	14,817	465	15,282	15,196	457	15,653
Graduate	604	254	858	677	246	923
Advanced Graduate	77	24	101	81	26	107
Graduate Degree Seeking Total	681	278	959	758	272	1,030
Non-degree Seeking Undergraduate	68	110	178	63	118	181
Non-degree Seeking Graduate	7	120	127	12	94	106
Non-degree Seeking Total	75	230	305	75	212	287
ON-CAMPUS TOTAL	15,573	973	16,546	16,029	941	16,970
OFF-CAMPUS						
Undergraduate Degree Seeking Total	0	5	5	0	0	0
Graduate Degree Seeking Total	1	107	108	4	104	108
Non-degree Seeking Undergraduate	0	153	153	0	179	179
Non-degree Seeking Graduate	0	126	126	0	136	136
OFF-CAMPUS TOTAL	1	391	392	4	419	423
ON AND OFF-CAMPUS						
Undergraduate Degree Seeking Total	14,817	470	15,287	15,196	457	15,653
Graduate Degree Seeking Total	682	385	1,067	762	376	1,138
Non-degree Seeking Undergraduate	68	263	331	63	297	360
Non-degree Seeking Graduate	7	246	253	12	230	242
ON AND OFF-CAMPUS TOTAL	15,574	1,364	16,938	16,033	1,360	17,393

NOTE: "Non-degree Seeking" is synonymous with "Special" or "Unclassified."

SOURCE: Fall Student Census.

TABLE 2-6
ON-CAMPUS HEADCOUNT BY AGE AND ACADEMIC LEVEL,
FALL 2006

AGE	DEGREE SEEKING UGRADS	DEGREE SEEKING GRADS	NON-DEGREE SEEKING UGRADS	NON-DEGREE SEEKING GRADS	TOTAL
Under 18	101	0	7	0	108
18-19	6,934	0	5	1	6,940
20-21	6,551	26	23	0	6,600
22-24	1,712	543	85	13	2,353
25-29	216	237	26	26	505
30-34	53	73	6	12	144
35-39	22	54	8	8	92
40-44	24	39	10	13	86
45-49	24	32	4	14	74
50-59	13	24	4	18	59
60-64	2	2	1	1	6
65 and Over	1	0	2	0	3
Unknown	0	0	0	0	0
TOTAL	15,653	1,030	181	106	16,970
Average Age	19.9	27.0	26.4	37.0	20.5
Median Age	20	24	23	35	20
Youngest Age	15	20	16	19	15
Oldest Age	66	61	75	60	75

NOTE: Non-Degree Seeking Undergraduates and Non-Degree Seeking Graduates are Special Students.

SOURCE: Fall Student Census.

TABLE 2-7

**HEADCOUNT BY ETHNICITY AND ACADEMIC LEVEL,
FALL 2004 - FALL 2006**

ACADEMIC LEVEL	2004		2005		2006	
	On-Campus	Off-Campus	On-Campus	Off-Campus	On-Campus	Off-Campus
African-American						
Freshman (First-time & Other)	76	0	168	0	222	0
Sophomore	95	0	88	0	139	0
Junior	139	0	108	1	85	0
Senior	113	0	128	1	104	0
Graduate	35	3	38	5	33	4
Non-degree Undergraduate	2	8	5	10	8	24
Non-degree Graduate	7	3	4	1	5	11
TOTAL	467	14	539	18	596	39
American Indian						
Freshman (First-time & Other)	11	0	10	0	14	0
Sophomore	6	0	10	0	8	0
Junior	8	0	5	0	11	0
Senior	7	0	8	0	7	0
Graduate	2	0	1	0	3	0
Non-degree Undergraduate	0	0	2	1	1	0
Non-degree Graduate	0	0	1	1	0	0
TOTAL	34	0	37	2	44	0
Asian/Pacific Islander						
Freshman (First-time & Other)	189	0	203	0	212	0
Sophomore	182	0	187	0	194	0
Junior	157	0	161	0	173	0
Senior	187	0	184	1	185	0
Graduate	14	4	21	8	23	9
Non-degree Undergraduate	4	0	9	0	5	2
Non-degree Graduate	1	0	1	0	1	0
TOTAL	734	4	766	9	793	11
White						
Freshman (First-time & Other)	3,158	0	3,428	0	3,472	0
Sophomore	3,346	0	3,228	1	3,401	0
Junior	3,095	1	3,076	0	3,110	0
Senior	2,875	0	3,117	1	3,065	0
Graduate	766	96	849	91	916	83
Non-degree Undergraduate	127	111	133	137	150	150
Non-degree Graduate	98	70	113	120	92	121
TOTAL	13,465	278	13,944	350	14,206	354

TABLE 2-7 CONTINUED

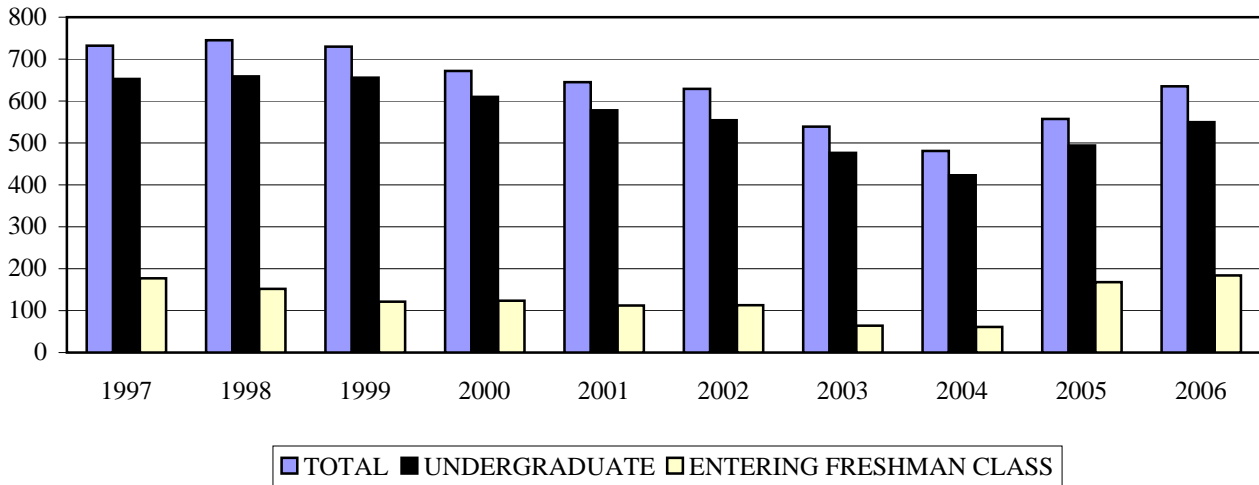
**HEADCOUNT BY ETHNICITY AND ACADEMIC LEVEL,
FALL 2004 - FALL 2006**

ACADEMIC LEVEL	2004		2005		2006	
	On-Campus	Off-Campus	On-Campus	Off-Campus	On-Campus	Off-Campus
Hispanic						
Freshman (First-time & Other)	66	0	106	0	100	0
Sophomore	88	0	70	0	94	0
Junior	62	0	77	0	68	0
Senior	68	0	70	0	91	0
Graduate	13	2	17	2	8	4
Non-degree Undergraduate	3	0	3	2	2	2
Non-degree Graduate	1	0	3	1	4	1
TOTAL	301	2	346	5	367	7
Unreported						
Freshman (First-time & Other)	220	0	250	0	197	0
Sophomore	143	0	212	0	238	0
Junior	142	0	134	0	202	0
Senior	123	0	148	0	138	0
Graduate	7	0	11	2	22	7
Non-degree Undergraduate	5	0	3	2	1	1
Non-degree Graduate	1	0	3	3	1	3
TOTAL	641	0	761	7	799	11
Non-Resident Alien						
Freshman (First-time & Other)	27	0	26	0	50	0
Sophomore	31	0	26	0	20	0
Junior	25	0	30	0	23	0
Senior	37	0	24	0	30	0
Graduate	30	0	22	0	25	1
Non-degree Undergraduate	17	0	23	1	14	0
Non-degree Graduate	0	1	2	0	3	0
TOTAL	167	1	153	1	165	1
All Ethnic Groups						
Freshman (First-time & Other)	3,747	0	4,191	0	4,267	0
Sophomore	3,891	0	3,821	1	4,094	0
Junior	3,628	1	3,591	1	3,672	0
Senior	3,410	0	3,679	3	3,620	0
Graduate	867	105	959	108	1,030	108
Non-degree Undergraduate	158	119	178	153	181	179
Non-degree Graduate	108	74	127	126	106	136
GRAND TOTAL	15,809	299	16,546	392	16,970	423

SOURCE: Fall Student Census.

FIGURE 2-3

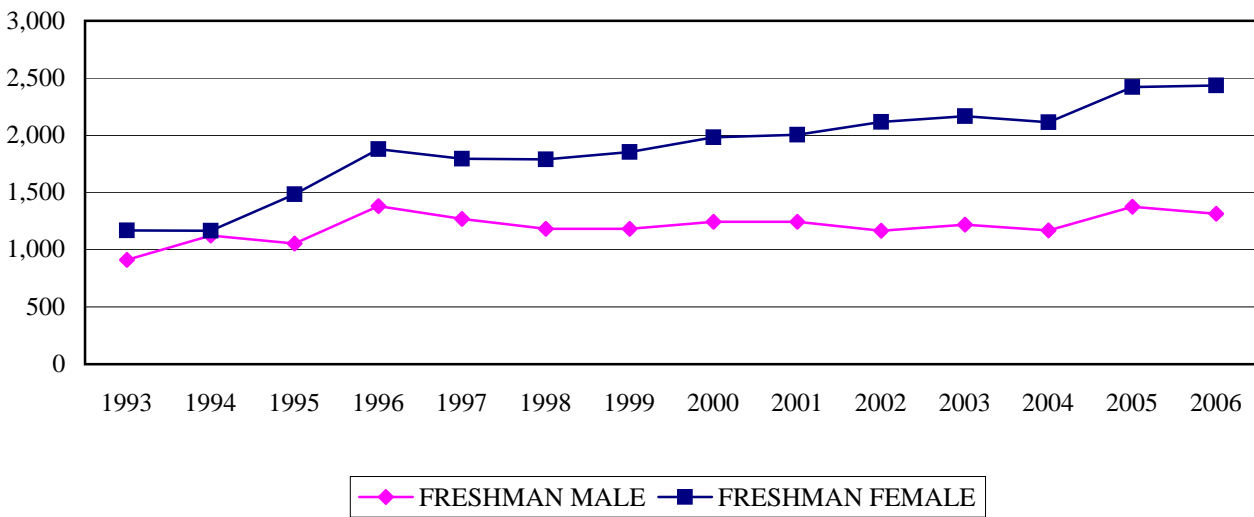
**AFRICAN-AMERICAN STUDENT HEADCOUNT,
FALL 1997 - FALL 2006**



SOURCE: Fall Student Census.

FIGURE 2-4

**ENTERING FRESHMAN CLASS HEADCOUNT BY SEX,
FALL 1993 - FALL 2006**



SOURCE: Fall Admissions Data.

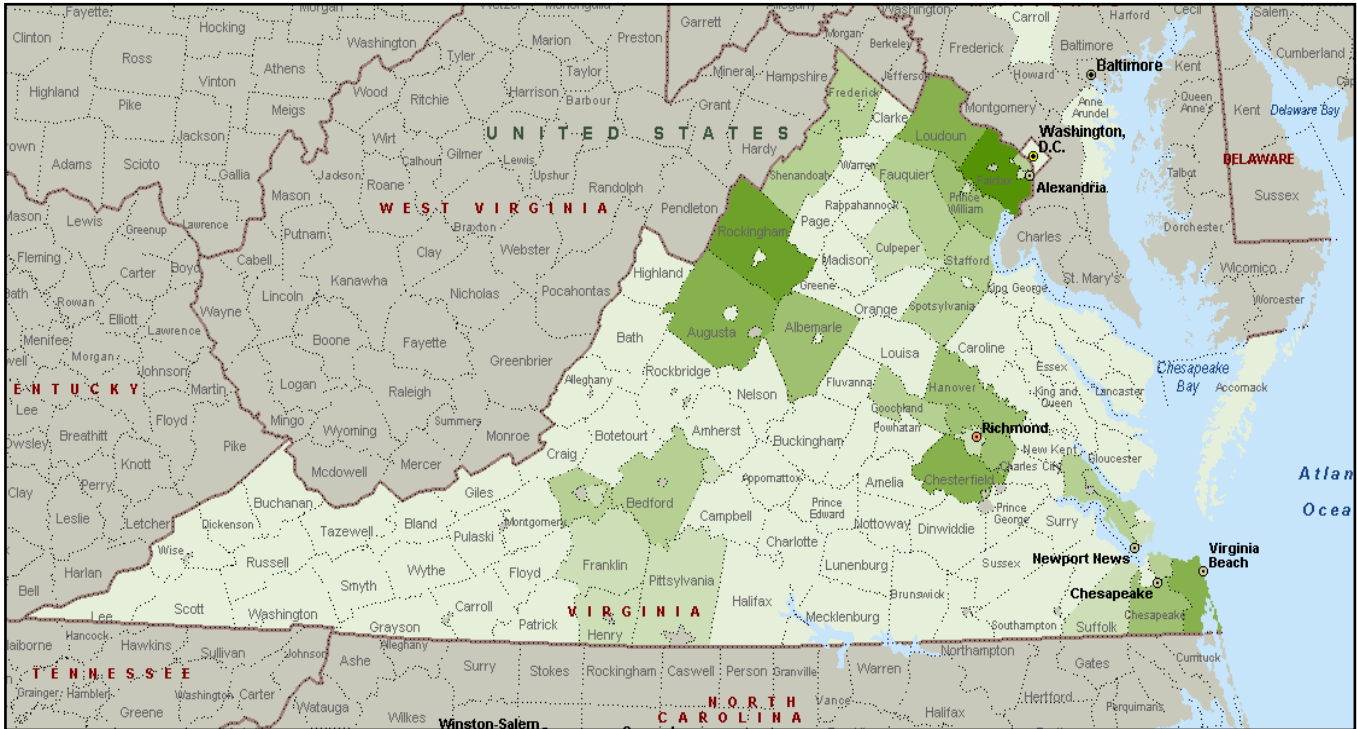
TABLE 2-8

**ON-CAMPUS HEADCOUNT BY LEADING GEOGRAPHICAL SOURCES,
FALL 2006**

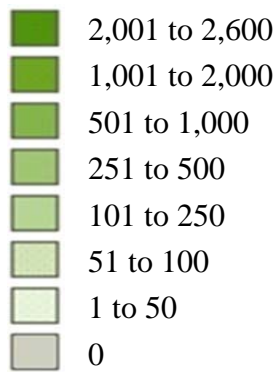
	UNDER- GRADUATE	GRADUATE	NON-DEGREE SEEKING	TOTAL
Virginia Counties				
Fairfax	2,153	81	12	2,246
Loudoun	535	28	1	564
Chesterfield	464	19	6	489
Rockingham	330	87	66	483
Prince William	445	16	3	464
Henrico	406	13	3	422
Albemarle	244	22	3	269
Hanover	242	10	0	252
Virginia Cities				
Virginia Beach	594	19	1	614
Harrisonburg	268	109	43	420
Chesapeake	279	10	0	289
Richmond	212	13	2	227
Newport News	158	4	1	163
Alexandria	136	15	1	152
Roanoke	116	11	3	130
Fairfax	125	3	1	129
Other States				
Maryland	1,062	26	3	1,091
New Jersey	990	34	1	1,025
Pennsylvania	778	40	5	823
New York	596	22	2	620
Massachusetts	243	12	0	255
Connecticut	245	8	0	253
Delaware	86	3	1	90
North Carolina	71	17	0	88

SOURCE: Fall Student Census.

FIGURE 2-5
VIRGINIA STUDENTS AT JMU,
FALL 2006



Total Students

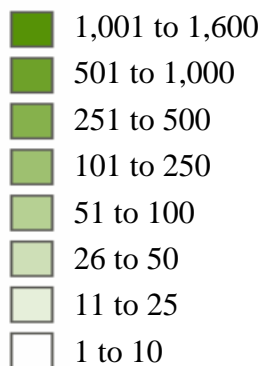


SOURCE: Fall Student Census.

FIGURE 2-6
ON-CAMPUS STUDENTS BY THREE-DIGIT ZIP CODE,
FALL 2006



Total Students



SOURCE: Fall Student Census.

TABLE 2-9
HEADCOUNT BY ACADEMIC LEVEL,
SUMMER 1998 - SUMMER 2006

SUMMER SESSION	LOWER	UPPER	GRADUATE	SEEKING UNDER-GRADUATE	NON-DEGREE SEEKING GRADUATE	TOTAL
1998						
On-Campus	892	3,210	435	203	213	4,953
Off-Campus	0	0	52	36	120	208
TOTAL	892	3,210	487	239	333	5,161
1999						
On-Campus	814	3,790	420	165	240	5,429
Off-Campus	0	0	76	14	37	127
TOTAL	814	3,790	496	179	277	5,556
2000						
On-Campus	1,117	3,454	351	263	183	5,368
Off-Campus	2	5	55	6	32	100
TOTAL	1,119	3,459	406	269	215	5,468
2001						
On-Campus	1,079	3,601	304	211	213	5,408
Off-Campus	0	5	143	17	53	218
TOTAL	1,079	3,606	447	228	266	5,626
2002						
On-Campus	1,148	3,483	323	208	146	5,308
Off-Campus	0	0	87	74	122	283
TOTAL	1,148	3,483	410	282	268	5,591
2003						
On-Campus	931	3,431	314	192	127	4,995
Off-Campus	0	0	109	74	28	211
TOTAL	931	3,431	423	266	155	5,206
2004						
On-Campus	853	3,387	427	283	169	5,119
Off-Campus	67	137	97	28	91	420
TOTAL	920	3,524	524	311	260	5,539
2005						
On-Campus	824	3,438	566	218	337	5,383
Off-Campus	124	243	111	64	38	580
TOTAL	948	3,681	677	282	375	5,963
2006						
On-Campus	796	3,380	580	222	420	5,398
Off-Campus	167	323	89	86	101	766
TOTAL	963	3,703	669	308	521	6,164

SOURCE: Summer Student Census.

TABLE 2-10
ON-CAMPUS CREDIT HOUR PRODUCTION BY DEPARTMENT,
FALL 2004 - FALL 2006

DEPARTMENT	2004	2005	2006
College of Arts & Letters			
School of Communication Studies	9,547	10,511	11,057
English	7,423	7,427	7,782
Foreign Lang. & Literatures	7,384	8,454	9,225
History	11,419	11,487	10,849
Center for Liberal & Applied Social Sciences	471	1,048	1,340
School of Media Arts & Design	3,867	4,038	3,878
Philosophy & Religion	8,695	8,209	8,397
Political Science	7,723	7,619	8,101
Sociology & Anthropology	8,196	7,842	7,501
Technical & Scientific Communication	894	1,003	1,034
Writing Program	5,433	5,446	5,685
<i>General American Studies</i>	693	819	-
<i>Women's Studies</i>	132	186	207
COLLEGE TOTAL	71,877	74,089	75,056
College of Business			
Accounting	1,545	1,617	2,145
Economics	6,496	6,476	6,459
Finance & Business Law	2,842	3,275	3,582
Hospitality & Tourism Mgt.	819	918	919
Information Tech. & Mgt. Science	1,262	981	1,185
International Business	42	39	28
Management	1,791	2,046	2,217
Marketing	2,853	2,247	2,304
<i>College of Business-BBA Core</i>	16,413	18,414	18,777
<i>General Business-General Education</i>	2,484	2,472	2,094
COLLEGE TOTAL	36,547	38,485	39,710
College of Education			
Education Departments	10,501	11,052	11,092
Military Science	696	605	610
COLLEGE TOTAL	11,197	11,657	11,702

TABLE 2-10 CONTINUED

**ON-CAMPUS CREDIT HOUR PRODUCTION BY DEPARTMENT,
FALL 2004 - FALL 2006**

DEPARTMENT	2004	2005	2006
College of Integrated Science & Technology			
Communication Sciences & Disorders	2,771	2,830	2,700
Computer Science	2,147	1,969	1,815
Health Sciences	11,911	13,343	12,455
Integrated Science & Technology	7,803	7,427	8,318
Kinesiology	6,820	7,535	7,369
Nursing	1,927	2,166	2,454
Psychology	12,407	12,606	12,912
Psychology, Graduate	1,450	1,576	1,608
Social Work	1,572	1,868	1,814
<i>Health & Human Services</i>	105	58	114
COLLEGE TOTAL	48,913	51,378	51,559
College of Science & Mathematics			
Biology	6,627	6,679	8,894
Chemistry	4,206	4,660	5,365
Geology & Environmental Science	1,129	1,192	2,374
Mathematics & Statistics	13,091	14,471	14,614
Physics	1,720	2,065	1,859
<i>General Education Science</i>	6,137	6,486	4,642
COLLEGE TOTAL	32,910	35,553	37,748
College of Visual & Performing Arts			
School of Art & Art History	8,383	7,754	7,007
School of Music	10,561	10,922	10,838
School of Theatre & Dance	3,054	2,848	2,995
COLLEGE TOTAL	21,998	21,524	20,840
<i>Cross Disciplinary Studies</i>	-	177	1,113
<i>General Humanities</i>	3,711	4,518	4,155
<i>Graduate School</i>	13	21	27
<i>Honors</i>	435	402	648
GRAND TOTAL	227,601	237,804	242,558

NOTE: According to department irrespective of department membership of instructor. Interdisciplinary courses within and across colleges are shown in *italics*.

SOURCE: Fall Student Course Enrollment Data.

TABLE 2-11

**ON-CAMPUS CREDIT HOUR PRODUCTION BY STUDENT LEVEL,
FALL 2006**

DEPARTMENT	GENED	LOWER	UPPER	GRAD	NON-DEGREE	TOTAL
College of Arts & Letters						
School of Communication Studies	6,252	1,709	3,090	0	6	11,057
English	4,200	592	2,723	228	39	7,782
Foreign Lang. & Literatures	0	4,774	4,346	16	89	9,225
History	7,873	498	2,219	253	6	10,849
Center for Liberal & Applied Social Sciences	0	491	846	3	0	1,340
School of Media Arts & Design	378	782	2,697	0	21	3,878
Philosophy & Religion	5,979	601	1,814	0	3	8,397
Political Science	3,858	1,299	2,773	141	30	8,101
Sociology & Anthropology	3,858	819	2,821	0	3	7,501
Technical & Scientific Communication	0	186	738	104	6	1,034
Writing Program	4,692	395	595	0	3	5,685
<i>Women's Studies</i>	0	63	144	0	0	207
COLLEGE TOTAL	37,090	12,209	24,806	745	206	75,056
College of Business						
Accounting	0	18	1,626	492	9	2,145
Economics	3,012	1,695	1,662	69	21	6,459
Finance & Business Law	0	72	3,297	159	54	3,582
Hospitality & Tourism Mgt.	0	199	720	0	0	919
Information Tech. & Mgt. Science	0	92	883	204	6	1,185
International Business	0	0	16	9	3	28
Management	0	21	2,022	141	33	2,217
Marketing	0	3	2,280	0	21	2,304
<i>College of Business-BBA Core</i>	0	10,104	8,664	0	9	18,777
<i>General Business-General Education</i>	2,094	0	0	0	0	2,094
COLLEGE TOTAL	5,106	12,204	21,170	1,074	156	39,710
College of Education						
Education Departments	0	1,998	5,607	2,481	1,006	11,092
Military Science	0	248	348	5	9	610
COLLEGE TOTAL	0	2,246	5,955	2,486	1,015	11,702

TABLE 2-11 CONTINUED

ON-CAMPUS CREDIT HOUR PRODUCTION BY STUDENT LEVEL,
FALL 2006

DEPARTMENT	GENED	LOWER	UPPER	GRAD	NON- DEGREE	TOTAL
College of Integrated Science & Technology						
Communication Sciences & Disorders	0	438	1,321	892	49	2,700
Computer Science	0	669	974	163	9	1,815
Health Sciences	4,032	2,159	5,201	1,042	21	12,455
Integrated Science & Technology	3,969	1,030	3,136	162	21	8,318
Kinesiology	2,415	1,227	3,066	610	51	7,369
Nursing	0	158	2,157	126	13	2,454
Psychology	7,266	1,329	4,295	0	22	12,912
Psychology, Graduate	0	0	0	1,509	99	1,608
Social Work	0	321	1,484	0	9	1,814
<i>Health & Human Services</i>	0	23	91	0	0	114
COLLEGE TOTAL	17,682	7,354	21,725	4,504	294	51,559
College of Science & Mathematics						
Biology	1,956	3,131	3,625	136	46	8,894
Chemistry	3,031	892	1,413	3	26	5,365
Geology & Environmental Science	789	743	838	4	0	2,374
Mathematics & Statistics	9,024	3,819	1,719	9	43	14,614
Physics	415	515	914	0	15	1,859
<i>General Education Science</i>	4,642	0	0	0	0	4,642
COLLEGE TOTAL	19,857	9,100	8,509	152	130	37,748
College of Visual & Performing Arts						
School of Art & Art History	1,983	1,596	3,289	96	43	7,007
School of Music	3,972	3,141	3,580	134	11	10,838
School of Theatre & Dance	720	901	1,358	7	9	2,995
COLLEGE TOTAL	6,675	5,638	8,227	237	63	20,840
<i>Cross Disciplinary Studies</i>	912	0	201	0	0	1,113
<i>General Humanities</i>	4,155	0	0	0	0	4,155
<i>Graduate School</i>	0	0	0	27	0	27
<i>Honors</i>	0	474	174	0	0	648
GRAND TOTAL	91,477	49,225	90,767	9,225	1,864	242,558

NOTE: According to department irrespective of department membership of instructor. Interdisciplinary courses within and across colleges are shown in *italics*.

SOURCE: Fall Student Course Enrollment Data.

TABLE 2-12

**ON-CAMPUS CREDIT HOURS AND FULL-TIME EQUIVALENT STUDENTS
BY LEVEL, REGULAR SESSION, 1995-96 - 2005-06**

YEAR	LOWER	UPPER	GRADUATE	NON-DEGREE	TOTAL
1995-96					
Credit Hours	163,074	146,531	13,026	6,370	329,001
FTE Students	5,436	4,884	543	224	11,087
1996-97					
Credit Hours	194,657	148,357	11,337	5,964	360,315
FTE Students	6,489	4,945	472	213	12,119
1997-98					
Credit Hours	207,954	160,235	10,343	4,857	383,389
FTE Students	6,932	5,341	431	173	12,877
1998-99					
Credit Hours	203,201	184,134	10,725	5,110	403,170
FTE Students	6,773	6,138	447	181	13,539
1999-00					
Credit Hours	200,149	192,773	10,077	5,100	408,099
FTE Students	6,672	6,426	420	179	13,697
2000-01					
Credit Hours	205,404	190,195	9,036	6,454	411,089
FTE Students	6,847	6,340	376	231	13,794
2001-02					
Credit Hours	209,828	194,304	9,896	5,874	419,902
FTE Students	6,994	6,477	413	210	14,094
2002-03					
Credit Hours	214,283	200,972	10,263	5,295	430,813
FTE Students	7,143	6,699	428	188	14,458
2003-04					
Credit Hours	214,798	209,232	10,878	4,068	438,976
FTE Students	7,160	6,974	453	145	14,732
2004-05					
Credit Hours	210,930	212,451	15,386	2,911	441,678
FTE Students	7,031	7,082	641	103	14,857
2005-06					
Credit Hours	221,404	218,759	16,267	3,162	459,592
FTE Students	7,380	7,292	678	112	15,462

NOTE: Courses taken in audit status or under tuition waivers are not included.

SOURCE: SCHEV Annual Student Data Module, Consumption Report, Regular Session On-Campus.

TABLE 2-13

**ON-CAMPUS CREDIT HOUR PRODUCTION BY DEPARTMENT,
SUMMER 2003 - SUMMER 2006**

DEPARTMENT	2003	2004	2005	2006
College of Arts & Letters				
School of Communication Studies	753	690	663	510
English	866	886	869	788
Foreign Lang. & Literatures	1,335	1,571	1,862	1,620
History	1,154	1,027	1,131	959
Center for Liberal & Applied Social Sciences	-	-	8	107
School of Media Arts & Design	420	425	343	473
Philosophy & Religion	709	510	519	384
Political Science	808	786	877	854
Sociology & Anthropology	1,256	991	881	710
Technical & Scientific Communication	160	39	45	75
Writing Program	288	120	48	-
<i>Interdisciplinary Social Science</i>	9	-	-	-
<i>Women's Studies</i>	46	24	27	5
COLLEGE TOTAL	7,804	7,069	7,273	6,485
College of Business				
Accounting	91	183	212	444
Economics	480	513	528	510
Finance & Business Law	633	514	603	534
Hospitality & Tourism Mgt.	-	36	21	3
Information Tech. & Mgt. Science	271	219	30	60
International Business	21	66	21	129
Management	87	210	264	261
Marketing	642	600	732	636
<i>College of Business-BBA Core</i>	2,529	2,683	2,487	2,496
<i>General Business-General Education</i>	27	42	57	-
COLLEGE TOTAL	4,781	5,066	4,955	5,073
College of Education				
Education Departments	1,689	2,197	3,073	3,064
Military Science	12	-	7	-
COLLEGE TOTAL	1,701	2,197	3,080	3,064

TABLE 2-13 CONTINUED

**ON-CAMPUS CREDIT HOUR PRODUCTION BY DEPARTMENT,
SUMMER 2003 - SUMMER 2006**

DEPARTMENT	2003	2004	2005	2006
College of Integrated Science & Technology				
Communication Sciences & Disorders	368	369	417	335
Computer Science	161	95	59	65
Health Sciences	1,282	1,120	1,335	1,102
Integrated Science & Technology	718	373	213	312
Kinesiology	1,124	1,159	1,629	1,883
Nursing	26	70	152	298
Psychology	1,159	1,048	937	856
Psychology, Graduate	467	468	505	546
Social Work	129	135	21	106
<i>Health & Human Services</i>	-	51	30	69
COLLEGE TOTAL	5,434	4,888	5,298	5,572
College of Science & Mathematics				
Biology	770	950	1,095	1,098
Chemistry	592	792	572	756
Geology & Environmental Science	108	45	148	326
Mathematics & Statistics	1,342	1,043	1,128	1,056
Physics	309	265	362	361
<i>General Education Science</i>	676	1,065	1,261	1,262
COLLEGE TOTAL	3,797	4,160	4,566	4,859
College of Visual & Performing Arts				
School of Art & Art History	1,315	1,441	1,295	978
School of Music	187	291	293	408
School of Theatre & Dance	63	126	43	122
COLLEGE TOTAL	1,565	1,858	1,631	1,508
<i>Graduate School</i>	-	7	-	1
<i>Honors</i>	6	3	-	-
<i>General Humanities</i>	270	255	162	249
<i>GEIC</i>	-	-	-	21
GRAND TOTAL	25,358	25,503	26,965	26,832

NOTE: According to department irrespective of department membership of instructor.
Interdisciplinary courses within and across colleges are shown in *italics*.

SOURCE: Summer Student Course Enrollment Data.

TABLE 2-14 ON
ON-CAMPUS CREDIT HOUR PRODUCTION BY DEPARTMENT
AND STUDENT LEVEL, SUMMER 2006

DEPARTMENT	GENED	LOWER	UPPER	GRAD	NON- DEGREE	TOTAL
College of Arts & Letters						
School of Communication Studies	117	51	342	0	0	510
English	309	45	413	9	12	788
Foreign Lang. & Literatures	0	190	1,356	9	65	1,620
History	410	51	450	33	15	959
Center for Liberal & Applied Social Sciences	0	3	101	0	3	107
School of Media Arts & Design	0	52	415	0	6	473
Philosophy & Religion	192	9	180	0	3	384
Political Science	348	47	411	30	18	854
Sociology & Anthropology	171	69	431	0	39	710
Technical & Scientific Communication	0	0	48	27	0	75
<i>Women's Studies</i>	0	0	2	0	3	5
COLLEGE TOTAL	1,547	517	4,149	108	164	6,485
College of Business						
Accounting	0	0	132	309	3	444
Economics	117	93	294	3	3	510
Finance & Business Law	0	6	477	51	0	534
Hospitality & Tourism Mgt.	0	0	0	3	0	3
Information Tech. & Mgt. Science	0	0	60	0	0	60
International Business	0	33	90	0	6	129
Management	0	0	192	66	3	261
Marketing	0	36	546	51	3	636
<i>College of Business-BBA Core</i>	0	552	1,935	0	9	2,496
COLLEGE TOTAL	117	720	3,726	483	27	5,073
College of Education						
Education Departments	0	54	399	1,267	1,344	3,064
COLLEGE TOTAL	0	54	399	1,267	1,344	3,064

TABLE 2-14 ON CONTINUED

**ON-CAMPUS CREDIT HOUR PRODUCTION BY DEPARTMENT
AND STUDENT LEVEL, SUMMER 2006**

DEPARTMENT	GENED	LOWER	UPPER	GRAD	NON-DEGREE	TOTAL
College of Integrated Science & Technology						
Communication Sciences & Disorders	0	0	2	325	8	335
Computer Science	0	10	48	7	0	65
Health Sciences	42	60	715	285	0	1,102
Integrated Science & Technology	0	55	176	25	56	312
Kinesiology	162	198	1,340	145	38	1,883
Nursing	0	37	210	42	9	298
Psychology	195	79	565	0	17	856
Psychology, Graduate	0	3	6	471	66	546
Social Work	0	0	103	0	3	106
<i>Health & Human Services</i>	0	24	36	0	9	69
COLLEGE TOTAL	399	466	3,201	1,300	206	5,572
College of Science & Mathematics						
Biology	344	84	467	178	25	1,098
Chemistry	234	57	454	6	5	756
Geology & Environmental Science	0	0	102	0	224	326
Mathematics & Statistics	735	70	222	18	11	1,056
Physics	140	7	206	0	8	361
<i>General Education Science</i>	1,262	0	0	0	0	1,262
COLLEGE TOTAL	2,715	218	1,451	202	273	4,859
College of Visual & Performing Arts						
School of Art & Art History	90	117	714	12	45	978
School of Music	42	51	225	63	27	408
School of Theatre & Dance	0	7	104	0	11	122
COLLEGE TOTAL	132	175	1,043	75	83	1,508
<i>GEIC</i>	21	0	0	0	0	21
<i>General Humanities</i>	249	0	0	0	0	249
<i>Graduate School</i>	0	0	0	1	0	1
GRAND TOTAL	5,180	2,150	13,969	3,436	2,097	26,832

NOTE: According to department irrespective of department membership of instructor.
Interdisciplinary courses are shown in *italics*.

SOURCE: Summer Student Course Enrollment Data.

TABLE 2-14 OFF

**OFF-CAMPUS CREDIT HOUR PRODUCTION BY DEPARTMENT
AND STUDENT LEVEL, SUMMER 2006**

DEPARTMENT	GENED	LOWER	UPPER	GRAD	NON- DEGREE	TOTAL	ONLINE
College of Arts & Letters							
School of Communication Studies	0	45	216	0	0	261	261
English	111	0	0	0	0	111	111
Foreign Lang. & Literatures	0	3	33	0	0	36	36
History	128	0	0	0	0	128	128
Ctr. for Lib. & App. Soc. Sciences	0	3	21	0	0	24	24
Philosophy & Religion	279	0	0	0	0	279	279
Writing Program	120	18	108	0	3	249	249
COLLEGE TOTAL	638	69	378	0	3	1,088	1,088
College of Business							
Economics	0	0	0	48	0	48	48
Finance & Business Law	0	0	0	39	15	54	48
Information Tech. & Mgt. Science	0	0	0	141	72	213	213
Management	0	0	0	87	18	105	105
Marketing	0	0	51	0	0	51	51
<i>College of Business-BBA Core</i>	0	12	39	0	0	51	51
<i>General Business-General Education</i>	213	0	0	0	0	213	213
COLLEGE TOTAL	213	12	90	315	105	735	729
College of Education							
Education Departments	0	32	244	29	68	373	331
COLLEGE TOTAL	0	32	244	29	68	373	331
College of Integrated Science & Technology							
Communication Sciences & Disorders	0	0	0	0	33	33	0
Computer Science	0	0	0	140	3	143	142
Health Sciences	276	51	195	3	18	543	543
Integrated Science & Technology	252	30	288	0	189	759	138
Kinesiology	117	6	18	15	3	159	159
Psychology	276	3	114	0	0	393	393
COLLEGE TOTAL	921	90	615	158	246	2,030	1,375

TABLE 2-14 OFF CONTINUED

**OFF-CAMPUS CREDIT HOUR PRODUCTION BY DEPARTMENT
AND STUDENT LEVEL, SUMMER 2006**

DEPARTMENT	GENED	LOWER	UPPER	GRAD	NON- DEGREE	TOTAL	<i>ONLINE</i>
College of Science & Mathematics							
Mathematics & Statistics	150	3	63	0	72	288	198
<i>General Education Science</i>	82	0	0	0	0	82	82
COLLEGE TOTAL	232	3	63	0	72	370	280
College of Visual & Performing Arts							
School of Music	0	0	0	0	39	39	0
COLLEGE TOTAL	0	0	0	0	39	39	0
<i>General Humanities</i>	105	0	0	0	0	105	105
GRAND TOTAL	2,109	206	1,390	502	533	4,740	3,908

NOTE: According to department irrespective of department membership of instructor. Interdisciplinary courses are shown in *italics*.

The "*ONLINE*" column indicates the credit hours included in "TOTAL" that were delivered over the web off-campus.

SOURCE: Summer Student Course Enrollment Data.

TABLE 2-15

**ON-CAMPUS CREDIT HOURS AND FULL-TIME EQUIVALENT
STUDENTS BY LEVEL, SUMMER 1996 - SUMMER 2006**

FISCAL YEAR	LOWER	UPPER	GRADUATE	NON-DEGREE	TOTAL
1996					
Credit Hours	3,803	14,316	2,315	1,842	22,276
FTE Students	127	477	96	71	771
1997					
Credit Hours	5,638	13,899	2,435	1,862	23,834
FTE Students	188	463	102	72	825
1998					
Credit Hours	5,990	16,059	1,977	1,924	25,950
FTE Students	200	535	82	74	891
1999					
Credit Hours	5,775	18,172	2,262	2,134	28,343
FTE Students	193	606	94	82	975
2000					
Credit Hours	5,459	19,158	1,822	1,661	28,100
FTE Students	182	639	76	61	958
2001					
Credit Hours	4,949	19,512	1,570	1,604	27,635
FTE Students	165	650	66	59	940
2002					
Credit Hours	4,882	20,392	1,649	1,800	28,723
FTE Students	163	680	69	66	978
2003					
Credit Hours	4,034	18,306	1,724	1,450	25,514
FTE Students	135	610	72	53	870
2004					
Credit Hours	3,667	17,762	2,351	1,536	25,316
FTE Students	122	592	98	55	867
2005					
Credit Hours	3,441	18,333	3,620	1,327	26,721
FTE Students	115	611	151	50	927
2006					
Credit Hours	3,214	17,451	3,542	2,506	26,713
FTE Students	107	582	147	95	931

NOTE: Courses taken in audit status or under tuition waivers are not included. Data is based upon a fiscal year "split" of summer terms.

SOURCE: SCHEV Annual Student Data Module, Consumption Report, Summer Session On-Campus.

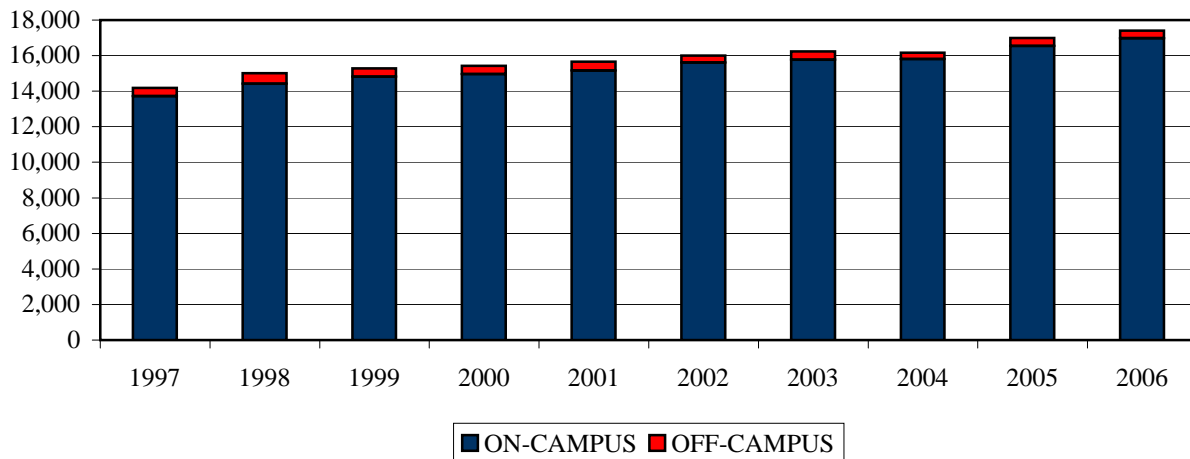
TABLE 2-16
ON AND OFF-CAMPUS HEADCOUNT,
FALL 1995 - FALL 2006

FALL SEMESTER	ON-CAMPUS	OFF-CAMPUS	TOTAL
1995	11,927	317	12,244
1996	12,963	371	13,334
1997	13,714	479	14,193
1998	14,414	596	15,010
1999	14,814	477	15,291
2000	14,961	467	15,428
2001	15,152	514	15,666
2002	15,612	394	16,006
2003	15,769	460	16,229
2004	15,809	351	16,160
2005	16,546	441	16,987
2006	16,970	442	17,412

NOTE: On-campus headcount enrollment as reported to the State Council of Higher Education for Virginia as of the fall census date. Off-campus headcount enrollment as reported at the end of the fall semester.

SOURCE: Fall Student Census and Fall Student Course Enrollment Data.

FIGURE 2-7
TOTAL HEADCOUNT,
FALL 1997 - FALL 2006



SOURCE: Fall Student Census and Fall Student Course Enrollment Data.

TABLE 2-17
OFF-CAMPUS CREDIT HOUR PRODUCTION BY
STUDENT LEVEL, FALL 2006

DEPARTMENT	UPPER	GRADUATE	NON- DEGREE	TOTAL	<i>ONLINE</i>
College of Business					
Accounting	0	45	0	45	45
Economics	0	0	3	3	3
Finance & Business Law	0	96	24	120	120
Information Tech. & Mgt. Science	0	102	6	108	108
Management	0	51	15	66	66
COLLEGE TOTAL	0	294	48	342	342
College of Education					
Education Departments	6	3	393	402	63
COLLEGE TOTAL	6	3	393	402	63
College of Integrated Science & Technology					
Computer Science	0	329	6	335	335
Integrated Science & Technology	0	0	120	120	0
Psychology	0	0	63	63	0
COLLEGE TOTAL	0	329	189	518	335
College of Science & Mathematics					
Mathematics & Statistics	0	0	72	72	0
Physics	0	0	244	244	0
COLLEGE TOTAL	0	0	316	316	0
College of Visual & Performing Arts					
School of Music	0	0	45	45	0
School of Theatre & Dance	0	0	45	45	0
COLLEGE TOTAL	0	0	90	90	0
Outreach Programs	0	20	54	74	0
GRAND TOTAL	6	646	1,090	1,742	740

NOTE: According to department irrespective of department membership of instructor.

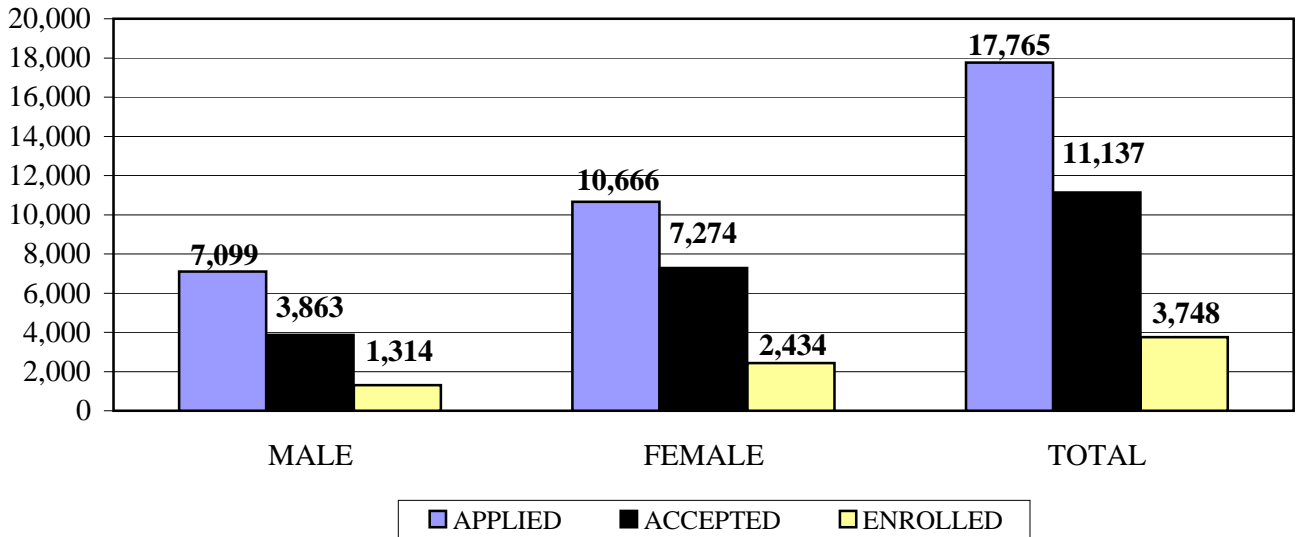
SOURCE: Fall Student Course Enrollment Data.

TABLE 2-18
UNDERGRADUATE ADMISSION APPLICATIONS,
FALL 2002 - FALL 2006

	2002	2003	2004	2005	2006
Entering Freshman Class					
Male					
Applied	6,313	6,213	6,092	6,587	7,099
Accepted	3,170	3,399	3,397	3,913	3,863
Enrolled	1,167	1,220	1,170	1,376	1,314
Female					
Applied	9,326	8,843	8,921	9,801	10,666
Accepted	5,878	6,005	6,075	7,181	7,274
Enrolled	2,116	2,168	2,115	2,422	2,434
Total					
Applied	15,639	15,056	15,013	16,388	17,765
Accepted	9,048	9,404	9,472	11,094	11,137
Enrolled	3,283	3,388	3,285	3,798	3,748
Transfers					
Male					
Applied	903	923	894	1,020	1,034
Accepted	533	502	500	568	582
Enrolled	329	315	314	354	376
Female					
Applied	830	839	849	906	920
Accepted	579	527	539	579	597
Enrolled	317	292	288	285	326
Total					
Applied	1,733	1,762	1,743	1,926	1,954
Accepted	1,112	1,029	1,039	1,147	1,179
Enrolled	646	607	602	639	702

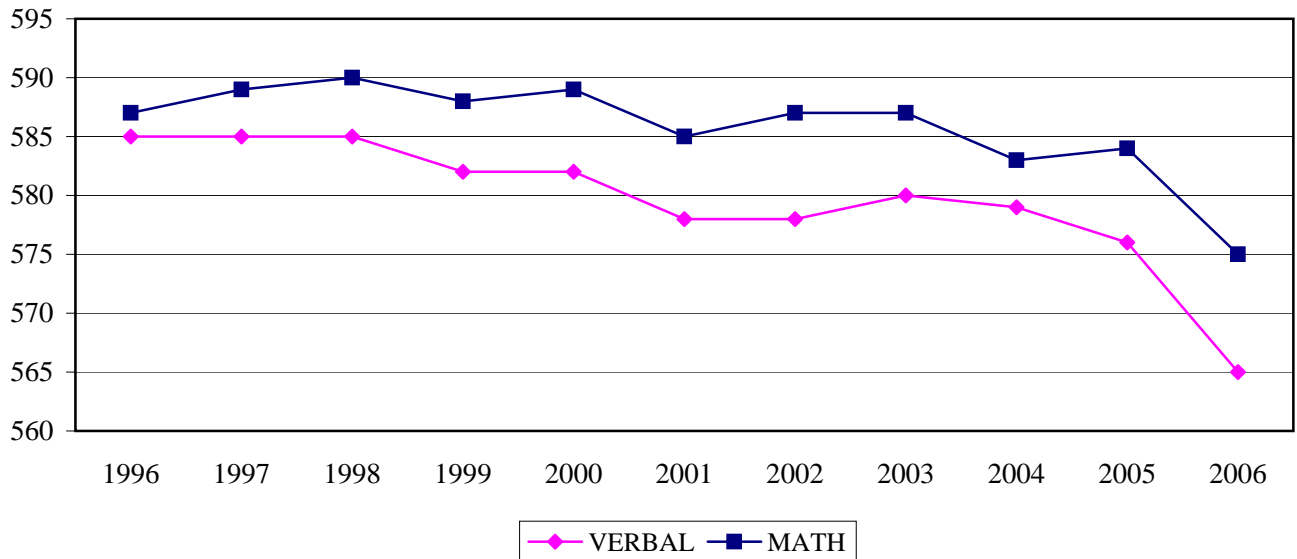
SOURCE: Fall Admissions Data.

FIGURE 2-8
ENTERING FRESHMAN CLASS APPLICATIONS BY SEX,
FALL 2006



SOURCE: Fall Admissions Data.

FIGURE 2-9
ENTERING FRESHMAN CLASS AVERAGE SAT SCORES,
FALL 1996 - FALL 2006



NOTE: National average SAT scores were 503 Reading, 518 Math, and 1,021 Combined.

SOURCE: Fall Admissions Data.

TABLE 2-19
ENTERING FRESHMAN CLASS AVERAGE SAT SCORES,
FALL 1990 - FALL 2006

FALL ENTERED	VERBAL/READING	MATH	COMBINED
1990	587	592	1,179
1991	594	593	1,187
1992	594	593	1,187
1993	595	597	1,192
1994	594	598	1,192
1995	594	592	1,186
1996	585	587	1,172
1997	585	589	1,174
1998	585	590	1,175
1999	582	588	1,170
2000	582	589	1,171
2001	578	585	1,163
2002	578	587	1,165
2003	580	587	1,167
2004	579	583	1,162
2005	576	584	1,160
2006	565	575	1,140

NOTE: National average scores for fall 2006 were 503 Reading, 518 Math, and 1,021 Reading and Math Combined. Virginia average scores for fall 2006 were 512 Reading, 513 Math, and 1,025 Reading and Math Combined. Scores on this table prior to 1995 are recentered from their original values to be equivalent to scores beginning in 1995. In 2006, the new SAT replaced the Verbal test with Critical Reading and introduced the new Writing test. JMU does not use the Writing score in its admissions criteria and those scores are not published.

SOURCE: Fall Admissions Data.

TABLE 2-20

**ENTERING FRESHMAN CLASS SAT SCORE DISTRIBUTION BY SEX,
FALL 2006**

SAT RANGE	READING		MATH	
	Male	Female	Male	Female
751-800	11	17	18	3
701-750	42	46	61	21
651-700	142	168	173	142
601-650	235	372	357	445
551-600	343	605	332	709
501-550	288	671	234	642
451-500	171	384	90	330
401-450	49	107	23	88
351-400	11	22	8	10
301-350	5	3	2	5
251-300	0	0	0	0
201-250	1	0	0	0
151-200	0	0	0	0
AVERAGE SCORES	574	561	597	563

NOTE: The total entering class had 1,314 males and 2,434 females. Sixteen males and 39 females had no SAT scores.

SOURCE: Fall Admissions Data.

TABLE 2-21
GRADE DISTRIBUTION BY COLLEGE AND COURSE LEVEL,
FALL 2006

	A, A-	B+, B, B-	C+, C, C-	D+, D	F
College of Arts & Letters					
Lower	30.0%	47.2%	17.1%	3.7%	1.9%
Upper	46.0%	39.8%	11.0%	1.6%	1.5%
Graduate	70.1%	28.4%	1.5%	0.0%	0.0%
College of Business					
Lower	27.4%	39.1%	22.7%	7.2%	3.6%
Upper	26.8%	51.4%	18.1%	2.7%	1.0%
Graduate	57.4%	40.2%	2.0%	0.0%	0.4%
College of Education					
Lower	88.1%	9.2%	1.5%	0.5%	0.7%
Upper	78.7%	17.5%	3.0%	0.4%	0.5%
Graduate	85.8%	13.9%	0.2%	0.0%	0.1%
College of Integrated Science & Technology					
Lower	36.4%	42.7%	16.6%	3.0%	1.2%
Upper	52.7%	35.1%	9.9%	1.1%	1.2%
Graduate	77.9%	20.1%	1.9%	0.0%	0.2%
College of Science & Mathematics					
Lower	25.8%	35.8%	25.9%	7.7%	4.8%
Upper	35.8%	34.4%	20.5%	4.8%	4.6%
Graduate	85.7%	14.3%	0.0%	0.0%	0.0%
College of Visual & Performing Arts					
Lower	51.3%	34.8%	10.0%	2.3%	1.6%
Upper	66.1%	24.4%	7.0%	1.4%	1.1%
Graduate	91.7%	8.3%	0.0%	0.0%	0.0%
Total University					
Lower	33.4%	40.9%	18.5%	4.6%	2.6%
Upper	47.8%	37.3%	11.8%	1.8%	1.4%
Graduate	77.2%	21.3%	1.3%	0.0%	0.2%

NOTE: Totals may not add to 100 due to rounding. Does not include incompletes, withdrawals, audits, and courses taken on a credit/no credit basis.

SOURCE: Fall Student Course Enrollment Data.

TABLE 2-22

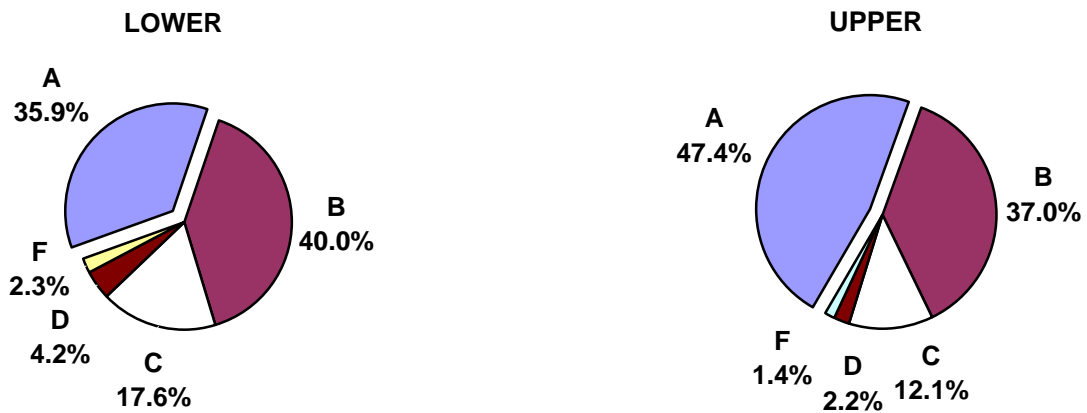
**UNDERGRADUATE MEDIAN CUMULATIVE GRADE POINT AVERAGES BY SEX,
END OF SPRING IN ALTERNATE YEARS, 1990-91 - 2004-05**

YEAR	MALE	FEMALE	OVERALL
1990-91	2.73	2.99	2.87
1992-93	2.74	3.00	2.89
1994-95	2.72	3.02	2.89
1996-97	2.74	3.00	2.89
1998-99	2.76	3.01	2.91
2000-01	2.76	3.05	2.94
2002-03	2.82	3.08	2.99
2004-05	2.88	3.10	3.02

SOURCE: Internal Statistical Report.

FIGURE 2-10

**UNDERGRADUATE GRADE DISTRIBUTION,
FALL 2006**



NOTE: Does not include graduate grades.

SOURCE: Fall Student Course Enrollment Data.

TABLE 2-23
HEADCOUNT BY GRADUATE STUDENT LEVELS,
FALL 2006

	FULL-TIME	PART-TIME	TOTAL
ON-CAMPUS			
Master's	677	246	923
Educational Specialist	16	15	31
Doctoral	65	11	76
Non-degree Seeking Graduate	12	94	106
TOTAL	770	366	1,136
OFF-CAMPUS			
Master's	2	104	106
Doctoral	2	0	2
Non-degree Seeking Graduate	0	136	136
TOTAL	4	240	244
ON AND OFF-CAMPUS			
Master's	679	350	1,029
Educational Specialist	16	15	31
Doctoral	67	11	78
Non-degree Seeking Graduate	12	230	242
GRAND TOTAL	774	606	1,380

NOTE: "Non-degree Seeking" is synonymous with "Special" or "Unclassified."

SOURCE: Fall Student Census.

TABLE 2-24
FULL-TIME EQUIVALENT STUDENTS BY SESSION,
1982-83 - 2005-06

YEAR	REGULAR SESSION	SUMMER SESSION	OFF- CAMPUS	TOTAL
1982-83	8,609	661	192	9,462
1983-84	8,900	675	188	9,763
1984-85	8,992	691	175	9,858
1985-86	9,105	692	155	9,952
1986-87	9,297	676	175	10,148
1987-88	9,617	677	143	10,437
1988-89	10,123	678	158	10,959
1989-90	10,366	694	146	11,206
1990-91	10,423	687	112	11,222
1991-92	10,620	700	153	11,473
1992-93	10,720	758	109	11,587
1993-94	10,711	724	124	11,559
1994-95	10,869	765	158	11,792
1995-96	11,087	771	113	11,971
1996-97	12,119	825	107	13,051
1997-98	12,877	891	153	13,921
1998-99	13,539	975	189	14,703
1999-00	13,697	959	172	14,828
2000-01	13,794	940	173	14,907
2001-02	14,094	978	163	15,235
2002-03	14,457	870	160	15,487
2003-04	14,732	867	178	15,777
2004-05	14,857	927	205	15,989
2005-06	15,462	931	304	16,697

NOTE: Summer data is based upon a fiscal year "split" of summer terms.

SOURCE: SCHEV Annual Student Data Module, Consumption Report, All Sessions.

TABLE 2-25
GRADUATION RATES FOR FALL ENTERING FRESHMAN CLASS,
1983 - 2002

FALL ENTERED	PERCENT GRADUATED		
	FOUR YEARS	FIVE YEARS	SIX YEARS
1983	55%	73%	76%
1984	57%	77%	79%
1985	59%	78%	81%
1986	61%	80%	82%
1987	59%	78%	81%
1988	60%	80%	82%
1989	58%	79%	82%
1990	58%	80%	81%
1991	60%	79%	81%
1992	62%	79%	80%
1993	60%	77%	79%
1994	58%	78%	80%
1995	59%	78%	80%
1996	59%	76%	78%
1997	60%	77%	80%
1998	61%	78%	80%
1999	62%	77%	80%
2000	63%	78%	80%
2001	64%	79%	N/A
2002	67%	N/A	N/A

NOTE: As reported to the Federal Government for the Student-Right-to-Know legislation.

SOURCE: Internal Statistical Reports (1983-1991), Fall Admissions Data and Annual Degrees Conferred Data (1992-Present).

TABLE 2-26

**RETURN RATES FOR FALL ENTERING FRESHMAN CLASS,
1989 - 2005**

FALL ENTERED	PERCENT RETURNING AFTER		
	ONE YEAR	TWO YEARS	THREE YEARS
1989	93.5%	88.2%	86.3%
1990	93.0%	86.4%	84.7%
1991	92.6%	86.9%	83.2%
1992	91.7%	86.0%	83.9%
1993	91.8%	84.6%	82.3%
1994	91.8%	85.7%	83.1%
1995	90.2%	84.9%	83.2%
1996	90.1%	83.9%	81.8%
1997	91.1%	84.4%	83.2%
1998	90.4%	84.5%	82.9%
1999	90.5%	84.8%	82.8%
2000	90.1%	84.5%	82.9%
2001	91.8%	85.9%	84.1%
2002	92.0%	86.1%	85.2%
2003	91.5%	85.7%	84.0%
2004	90.9%	85.9%	N/A
2005	91.8%	N/A	N/A

SOURCE: Internal Statistical Reports (1989-1991), Fall Admissions Data and Fall Student Census (1992-Present).

TABLE 2-27

**NON-RESIDENT ALIEN HEADCOUNT BY COUNTRY
AND ACADEMIC LEVEL, FALL 2006**

COUNTRY	UNDERGRADUATE	GRADUATE	NON-DEGREE SEEKING	TOTAL
Afghanistan	1	0	0	1
Argentina	2	0	0	2
Australia	2	0	4	6
Austria	1	0	0	1
Bangladesh	2	0	0	2
Bolivia	1	0	0	1
Brazil	1	0	0	1
Bulgaria	3	0	0	3
Canada	11	0	0	11
Central African Republic	1	0	0	1
Chile	0	1	0	1
China	3	3	1	7
Colombia	1	0	1	2
Cote d'Ivoire	0	1	0	1
Finland	1	0	0	1
France	1	0	0	1
Germany	3	1	4	8
Ghana	3	0	0	3
Haiti	0	1	0	1
Honduras	2	0	0	2
Iceland	1	0	0	1
India	11	5	0	16
Indonesia	1	1	0	2
Iraq	0	1	0	1
Israel	1	0	0	1
Japan	5	0	0	5
Jordan	0	1	0	1
Kazakstan	17	0	0	17
Kenya	1	1	0	2
Korea, Republic of	6	0	1	7
Kuwait	1	0	0	1
Lebanon	0	1	0	1
Mexico	5	0	0	5
Moldova, Republic of	0	0	1	1
Mongolia	0	1	0	1

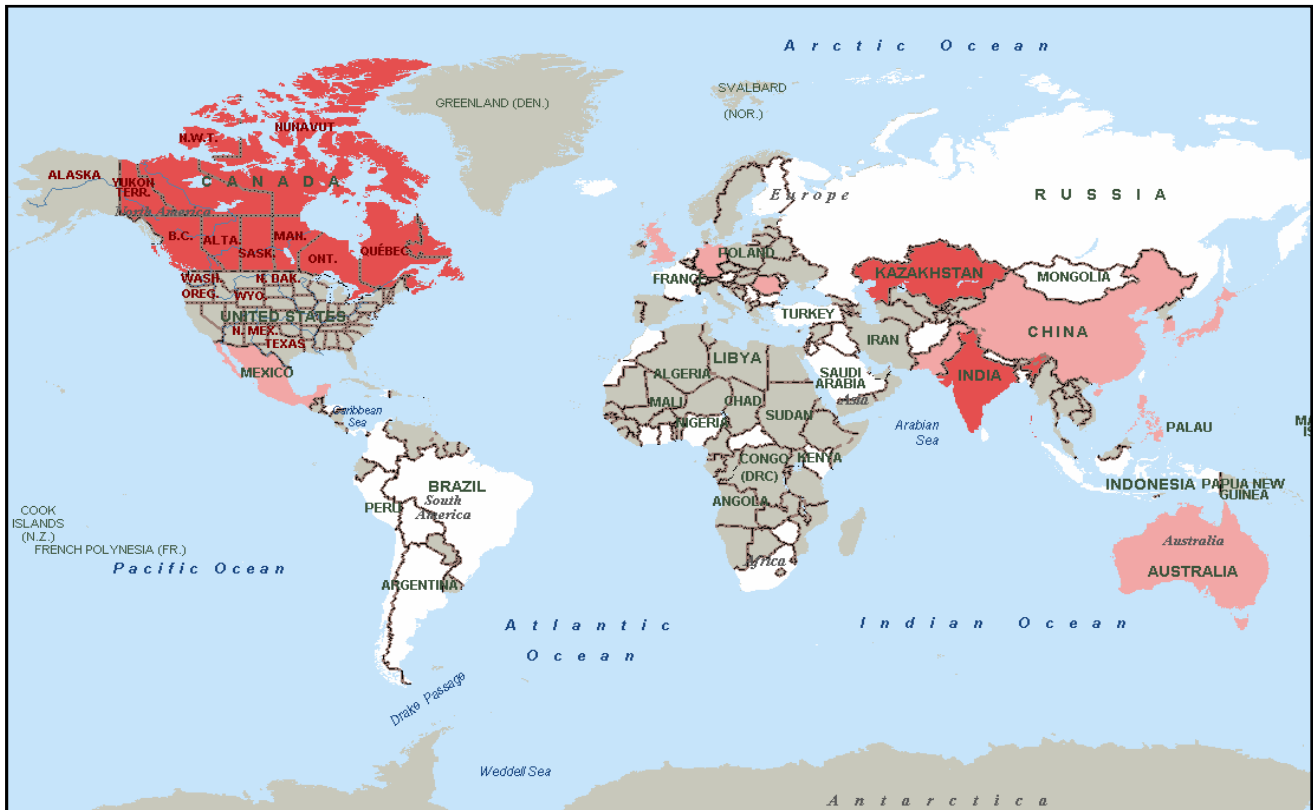
TABLE 2-27 CONTINUED

**NON-RESIDENT ALIEN HEADCOUNT BY COUNTRY
AND ACADEMIC LEVEL, FALL 2006**

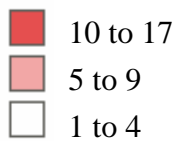
COUNTRY	UNDERGRADUATE	GRADUATE	NON-DEGREE SEEKING	TOTAL
Morocco	1	0	0	1
Nepal	0	1	0	1
Netherlands	4	0	0	4
Nigeria	1	0	0	1
Pakistan	5	1	1	7
Panama	1	0	0	1
Peru	1	0	0	1
Philippines	5	0	0	5
Romania	0	3	3	6
Russian Federation	0	0	1	1
Saudi Arabia	1	0	0	1
Singapore	0	1	0	1
South Africa	4	0	0	4
Sri Lanka	1	0	0	1
Switzerland	0	1	0	1
Taiwan, Province of China	1	0	0	1
Turkey	2	0	0	2
United Kingdom	5	1	0	6
Yugoslavia	1	0	0	1
Zimbabwe	2	0	0	2
TOTAL	123	26	17	166

SOURCE: Fall Student Census and Student Administration System Data.

FIGURE 2-11
NON-RESIDENT ALIENS BY COUNTRY,
FALL 2006



Total Students



SOURCE: Fall Student Census and Student Administration System Data.

Academic Departments and Degree Programs



TABLE 3-1

**DEGREE PROGRAMS APPROVED BY THE
STATE COUNCIL OF HIGHER EDUCATION, 2006-07**

CIP CODE	DISCIPLINE	UNDER- GRADUATE	START YEAR	GRADUATE	START YEAR
09.0101	Communications	B.A., B.S.	1967		
11.0101	Computer Science	B.S.	1980	M.S.	1986
11.0401	Computer Information Systems	B.B.A.	1976		
13.0101	Education			M.Ed., M.A.T.	1997
13.1001	Special Education			M.Ed.	1973
13.1101	Counselor Education			M.Ed.	1969
				M.A.	1999
13.1201	Adult Education/Human Res. Dev.			M.S.Ed.	-
13.1303	Business & Marketing Education	B.S.	1974		
13.1307	Health Education			M.S., M.S.Ed.	1977
13.1311	Mathematics			M.Ed.	2004
13.9999	Counselor Education			Ed.S.	1981
13.9999	School Psychology			Ed.S.	1981
16.0101	Modern Foreign Languages	B.A.	1989		
19.0501	Dietetics	B.S.	-		
22.0201	Justice Studies	B.A., B.S.	2004		
23.0101	English	B.A.	-	M.A.	1967
23.1101	Technical & Scientific Communication	B.A., B.S.	1997	M.A., M.S.	1997
24.0101	Individualized Study	B.A., B.I.S., B.S.	1977		
26.0101	Biology	B.A., B.S.	-	M.S.	1960
26.1201	Biotechnology	B.S.	2005		
27.0101	Mathematics	B.A., B.S.	-		
27.0101	Statistics	B.S.	2004		
30.1501	Integrated Science & Technology	B.S.	1993	M.S.	1999
31.0501	Kinesiology	B.S.	-	M.S.	1975
38.9999	Philosophy & Religion	B.A.	1971		
40.0501	Chemistry	B.A., B.S.	-		
40.0601	Geology	B.A., B.S.	-		
40.0801	Physics	B.A., B.S.	-		
42.0101	Psychology	B.A., B.S.	-	M.A.	1976
42.0101	Combined-Integrated Psychology			Psy.D.	1995
				Ph.D.	2004
42.1701	School Psychology			M.A.	1969
42.1901	Assessment & Measurement			Ph.D.	2004
44.0401	Public Administration	B.S.	1977	M.P.A.	1982
44.0701	Social Work	B.S.W.	1977		
45.0101	Interdisciplinary Social Science	B.A., B.S.	-		

TABLE 3-1 CONTINUED

**DEGREE PROGRAMS APPROVED BY THE
STATE COUNCIL OF HIGHER EDUCATION, 2006-07**

CIP CODE	DISCIPLINE	UNDER- GRADUATE	START YEAR	GRADUATE	START YEAR
45.0201	Anthropology	B.A., B.S.	1979		
45.0601	Economics	B.A., B.S.	-		
45.0701	Geographic Science	B.A., B.S.	1973		
45.0901	International Affairs	B.A.	1990		
45.1001	Political Science	B.A.	-		
45.1101	Sociology	B.A., B.S.	-		
50.0501	Theatre	B.A.	1985		
50.0701	Art	B.A., B.F.A., B.S.	1975	M.A., M.F.A.	1980
50.0703	Art History	B.A.	1979		
50.0903	Music	B.M.	1975	M.M.	1981
51.0202	Audiology			Au.D.	2005
51.0203	Communication Sciences & Disorders	B.A., B.S.	1968	M.S. Ph.D.	1975 2002
51.0701	Health Services Administration	B.S.	2004		
51.0912	Physician Assistant Studies			M.P.A.S.	2003
51.0913	Athletic Training	B.S.	2004		
51.1504	Health Sciences	B.S.	1977		
51.1601	Nursing	B.S.N.	1980		
51.1603	Nursing			M.S.N.	2004
51.2306	Occupational Therapy			M.O.T.	2005
52.0201	Business Mgt./Administration	B.B.A.	1967	M.B.A.	1970
52.0301	Accounting	B.B.A.	1974	M.S.	1978
52.0601	Business Economics	B.B.A.	1980		
52.0801	Finance	B.B.A.	1977		
52.0899	Quantitative Finance	B.S.	1995		
52.0901	Hospitality & Tourism Management	B.B.A.	1974		
52.1101	International Business	B.B.A.	1979		
52.1401	Marketing	B.B.A.	1967		
54.0101	History	B.A.	-	M.A.	1968

NOTE: The CIP Codes reflect the 2000 taxonomy. This table lists only disciplines that are currently open to entering class and transfer students.

SOURCE: SCHEV Institutional Information Data.

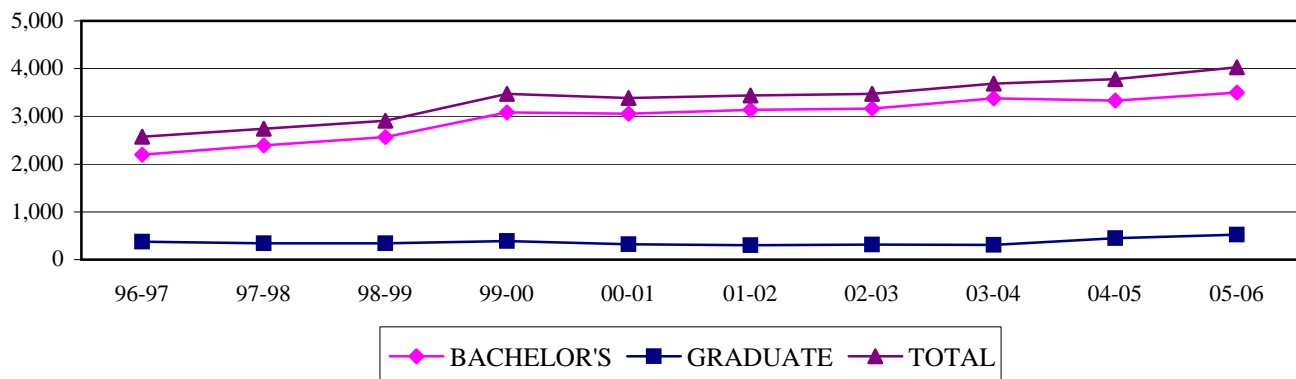
TABLE 3-2
DEGREES CONFERRED TOTALS, 1991-92 - 2005-06

YEAR	BACHELOR'S	GRADUATE	TOTAL
1991-92	2,297	287	2,584
1992-93	2,187	295	2,482
1993-94	2,294	332	2,626
1994-95	2,343	342	2,685
1995-96	2,302	364	2,666
1996-97	2,196	375	2,571
1997-98	2,394	344	2,738
1998-99	2,565	341	2,906
1999-00	3,082	390	3,472
2000-01	3,059	325	3,384
2001-02	3,134	301	3,435
2002-03	3,162	312	3,474
2003-04	3,378	307	3,685
2004-05	3,329	449	3,778
2005-06	3,501	526	4,027

NOTE: Period July 1 through June 30.

SOURCE: Annual Degrees Conferred Data.

FIGURE 3-1
DEGREES CONFERRED,
1996-97 - 2005-06



NOTE: "Graduate" includes Master's, Ed.S. and Doctoral Degrees.

SOURCE: Annual Degrees Conferred Data.

TABLE 3-3

**BACHELOR'S DEGREES CONFERRED BY FIRST MAJOR
AND CIP CODE, 2002-03 - 2005-06**

CIP CODE	MAJOR FIELD	2002-03	2003-04	2004-05	2005-06
52.0301	Accounting	74	81	95	104
45.0201	Anthropology	35	43	29	43
50.0701	Art	123	132	127	147
50.0703	Art History	15	15	16	22
51.0913	Athletic Training	-	-	4	16
26.0101	Biology	83	92	96	118
26.1201	Biotechnology	-	-	-	1
13.1303	Business & Marketing Education	4	6	3	3
52.0601	Business Economics	10	14	21	16
40.0501	Chemistry	14	21	22	28
51.0203	Communication Sciences & Disorders	53	60	67	74
09.0101	Communication Studies	129	93	89	142
11.0401	Computer Information Systems	158	115	75	46
11.0101	Computer Science	93	65	70	61
19.0501	Dietetics	19	18	21	22
45.0601	Economics	34	41	32	35
23.0101	English	132	144	140	161
52.0801	Finance	155	198	161	210
45.0701	Geographic Science	27	41	41	30
40.0601	Geology	14	20	17	11
51.1504	Health Sciences	192	182	176	175
51.0701	Health Services Administration	-	-	8	25
54.0101	History	56	59	91	86
52.0901	Hospitality & Tourism Management	48	42	61	64
24.0101	Individualized Study	27	28	27	17
30.1501	Integrated Science & Technology	165	181	136	115
24.0101	Interdisciplinary Liberal Studies	68	137	159	151
45.0101	Interdisciplinary Social Science	55	62	48	53
45.0901	International Affairs	39	45	62	55
52.1101	International Business	47	42	31	48
31.0501	Kinesiology	112	128	124	144
52.0201	Management	64	81	88	123
52.1401	Marketing	234	211	213	168

TABLE 3-3 CONTINUED

**BACHELOR'S DEGREES CONFERRED BY FIRST MAJOR
AND CIP CODE, 2002-03 - 2005-06**

CIP CODE	MAJOR FIELD	2002-03	2003-04	2004-05	2005-06
27.0101	Mathematics	27	11	17	40
09.0101	Media Arts & Design	131	179	179	143
16.0101	Modern Foreign Languages	15	37	35	28
50.0903	Music	72	56	57	53
51.1601	Nursing	48	56	53	59
52.0201	Operations Management	5	10	4	0
38.9999	Philosophy & Religion	18	27	27	38
40.0801	Physics	9	7	16	13
45.1001	Political Science	93	119	110	117
42.0101	Psychology	221	221	237	242
44.0401	Public Administration	32	52	49	44
52.0899	Quantitative Finance	2	9	11	19
31.0501	Recreation	19	22	14	24
44.0701	Social Work	32	40	37	39
45.1101	Sociology	96	76	72	68
27.0101	Statistics	-	2	2	1
23.1101	Technical & Scientific Communication	30	28	25	21
50.0501	Theatre & Dance	33	29	34	38
	TOTAL	3,162	3,378	3,329	3,501

SOURCE: Annual Degrees Conferred Data.

TABLE 3-4

**BACHELOR'S DEGREES CONFERRED BY SECOND MAJOR
AND CIP CODE, 2005-06**

CIP CODE	DISCIPLINE	NUMBER	CIP CODE	DISCIPLINE	NUMBER
52.0301	Accounting	2	45.0101	Interdisciplinary Social Science	2
45.0201	Anthropology	5	45.0901	International Affairs	4
50.0701	Art	1	52.1101	International Business	2
50.0703	Art History	3	31.0501	Kinesiology	2
26.0101	Biology	2	52.0201	Management	8
51.0203	Communication Sciences & Disorders	1	52.1401	Marketing	10
09.0101	Communication Studies	3	27.0101	Mathematics	9
11.0401	Computer Information Systems	3	09.0101	Media Arts & Design	15
11.0101	Computer Science	2	16.0101	Modern Foreign Languages	28
45.0601	Economics	25	52.0201	Operations Management	1
23.0101	English	17	38.9999	Philosophy & Religion	10
52.0801	Finance	33	45.1001	Political Science	8
45.0701	Geographic Science	1	42.0101	Psychology	7
40.0601	Geology	1	44.0401	Public Administration	1
51.1504	Health Sciences	2	52.0899	Quantitative Finance	1
54.0101	History	5	31.0501	Recreation	1
52.0901	Hospitality & Tourism Management	1	45.1101	Sociology	3
30.1501	Integrated Science & Technology	1	23.1101	Technical & Scientific Communication	7
24.0101	Interdisciplinary Liberal Studies	1	50.0501	Theatre & Dance	1
				TOTAL	229

NOTE: As reported to the State Council of Higher Education.

SOURCE: Annual Degrees Conferred Data.

TABLE 3-5

**GRADUATE DEGREES CONFERRED BY MAJOR
AND CIP CODE, 2002-03 - 2005-06**

CIP CODE	MAJOR FIELD	2002-03	2003-04	2004-05	2005-06
52.0301	Accounting	6	0	16	22
13.1201	Adult Education/Human Resource Devel.	9	7	13	9
50.0701	Art	5	1	1	7
42.1901	Assessment & Measurement (Ph.D.)	-	-	2	3
26.0101	Biology	7	8	5	7
52.0201	Business Administration	31	21	42	46
42.0101	Combined-Integrated Psychology (Ph.D.)	6	9	7	0
51.0203	Communication Sciences & Disorders (Ph.D.)	3	3	10	7
11.0101	Computer Science	33	21	24	21
13.1101	Counseling Psychology	25	31	31	27
13.9999	Counseling Psychology (Ed.S.)	8	17	23	13
13.0101	Education	25	44	100	158
23.0101	English	7	6	9	7
13.1307	Health Education	11	15	6	16
51.0202	Hearing Disorders	0	2	1	0
54.0101	History	11	7	12	5
30.1501	Integrated Science & Technology	5	3	4	4
31.0501	Kinesiology	19	18	28	45
50.0903	Music	14	6	11	2
51.1603	Nursing	-	-	-	4
51.0912	Physician Assistant Studies	-	-	-	13
42.0101	Psychological Sciences	6	12	10	8
44.0401	Public Administration	7	9	10	8
42.1701	School Psychology	9	7	6	11
13.9999	School Psychology (Ed.S.)	6	6	9	5
13.1001	Special Education	20	18	37	49
51.0203	Speech Pathology	31	27	22	26
23.1101	Technical & Scientific Communication	8	9	10	3
	TOTAL	312	307	449	526

SOURCE: Annual Degrees Conferred Data.

TABLE 3-6
DEGREES CONFERRED HISTORY BY DEGREE LEVEL,
1909 - 2006

YEAR	BACHELOR'S	MASTER'S	ED.S.	PSY.D.	PH.D.	TOTAL GRADUATE	GRAND TOTAL
1909-1953	8,450						8,450
1954	208						208
1955	203						203
1956	192	9				9	201
1957	180	10				10	190
1958	225	16				16	241
1959	233	36				36	269
1960	244	38				38	282
1961	218	21				21	239
1962	233	35				35	268
1963	264	46				46	310
1964	337	41				41	378
1965	375	30				30	405
1966	359	37				37	396
1967	306	52				52	358
1968	410	50				50	460
1968-69	598	50				50	648
1969-70	616	74				74	690
1970-71	701	75				75	776
1971-72	832	98				98	930
1972-73	843	131				131	974
1973-74	1,001	123				123	1,124
1974-75	1,018	198				198	1,216
1975-76	1,363	174				174	1,537
1976-77	1,428	226				226	1,654
1977-78	1,560	283				283	1,843
1978-79	1,509	304				304	1,813
1979-80	1,524	258				258	1,782
1980-81	1,544	323				323	1,867
1981-82	1,742	291	5			296	2,038
1982-83	1,802	261	13			274	2,076
1983-84	1,841	243	9			252	2,093
1984-85	1,772	278	25			303	2,075

TABLE 3-6 CONTINUED

DEGREES CONFERRED HISTORY BY DEGREE LEVEL,
1909 - 2006

YEAR	BACHELOR'S	MASTER'S	ED.S.	PSY.D.	PH.D.	TOTAL GRADUATE	GRAND TOTAL
1985-86	1,872	222	25			247	2,119
1986-87	1,932	190	30			220	2,152
1987-88	1,922	229	12			241	2,163
1988-89	2,029	214	21			235	2,264
1989-90	2,045	255	19			274	2,319
1990-91	2,256	247	11			258	2,514
1991-92	2,297	270	17			287	2,584
1992-93	2,187	263	32			295	2,482
1993-94	2,294	316	16			332	2,626
1994-95	2,343	315	27			342	2,685
1995-96	2,302	329	35			364	2,666
1996-97	2,196	346	26	3		375	2,571
1997-98	2,394	314	27	3		344	2,738
1998-99	2,565	328	13	0		341	2,906
1999-00	3,082	367	19	4		390	3,472
2000-01	3,059	298	18	9		325	3,384
2001-02	3,134	276	21	4		301	3,435
2002-03	3,162	289	14	6	3	312	3,474
2003-04	3,378	272	23	7	5	307	3,685
2004-05	3,329	398	32	7	12	449	3,778
2005-06	3,501	498	18	0	10	526	4,027
TOTAL	87,410	10,047	508	43	30	10,628	98,038

SOURCE: Annual Degrees Conferred Data.

TABLE 3-7

**EDUCATION STUDENTS COMPLETING ENDORSEMENTS
FOR THE COLLEGIATE PROFESSIONAL, POST GRADUATE PROFESSIONAL,
OR ADVANCED LICENSE,
2005-06**

ENDORSEMENTS	JMU GRAD	OTHER	TOTAL
COLLEGIATE PROFESSIONAL			
Early & Elementary Education			
Early Childhood, PreK-3	96	0	96
Elementary Education, PreK-6	1	0	1
NK-12 Programs			
Art	12	0	12
Music	25	1	26
Additional Endorsements			
Algebra	0	0	0
Driver Education	0	1	1
English as a Second Language	2	0	2
Journalism	0	0	0
Speech Communication	0	0	0
Theatre Arts	0	0	0
TOTAL COLLEGIATE PROFESSIONAL	136	2	138
POST GRADUATE PROFESSIONAL			
Early & Elementary Education			
Early Childhood, PreK-3	23	2	25
Elementary Education, PreK-6	22	0	22
Elementary Education, 4-6	3	0	3
Middle Education, 6-8			
English & Social Studies, 6-8	4	0	4
Mathematics & Science, 6-8	6	1	7
Science & Social Studies, 6-8	1	0	1
Secondary Education			
Biology	1	0	1
Business & Marketing Education	0	0	0
Chemistry	1	0	1
Earth Science	2	0	2
English	22	0	22
French	0	0	0
History & Social Science	6	0	6
Mathematics	12	0	12
Physics	0	0	0
Social Studies	21	0	21
Spanish	0	0	0
PreK-12 Programs			
Health & Physical Education	13	0	13
Special Education, K-12			
Early Childhood Special Education	7	0	7
Emotionally Dis., Learning Dis., & Mental Ret.	31	3	34
Learning Disabilities	1	0	1
Mental Retardation	1	0	1
Speech-Language Disorders	0	0	0

TABLE 3-7 CONTINUED

**EDUCATION STUDENTS COMPLETING ENDORSEMENTS
FOR THE COLLEGIATE PROFESSIONAL, POST GRADUATE PROFESSIONAL,
OR ADVANCED LICENSE,
2005-06**

ENDORSEMENTS	JMU GRAD	OTHER	TOTAL
Additional Endorsements			
Algebra	6	0	6
Driver Education	0	0	0
English as a Second Language	1	0	1
Journalism	0	0	0
Speech Communication	0	0	0
Theatre Arts	0	0	0
TOTAL POST GRADUATE PROFESSIONAL	184	6	190
ADVANCED			
Early & Middle Education			
Early Childhood	0	0	0
Middle Education	0	0	0
Health Education	0	0	0
Music Education	0	0	0
Secondary Education	0	0	0
Special Education			
Early Childhood Special Education	0	0	0
Emotionally Dis., Learning Dis., & Mental Ret.	1	0	1
Learning Disabilities & Emotionally Disturbed	0	0	0
Speech/Language Disorders	1	0	1
School Services			
School Administration, PreK-12	8	1	9
School Counselor	3	0	3
School Psychologist	4	0	4
Additional Programs			
Reading Specialist	12	0	12
Speech Pathology	3	0	3
TOTAL ADVANCED	32	1	33
GRAND TOTAL	352	9	361

NOTE: Totals do not reflect number of students, but number of endorsements granted between July 1 and June 30. The "JMU GRAD" column includes students who graduated and completed licensure requirements during 2005-06. The "OTHER" column includes students who received a bachelor's or master's degree prior to 2005-06 and enrolled or reenrolled at JMU to become certified in a particular field. Twelve students have multiple endorsements.

SOURCE: Education Support Center.

TABLE 3-8
LIBRARY COLLECTIONS AND SERVICES,
2001-02 - 2005-06

	2001-02	2002-03	2003-04	2004-05	2005-06
Bookstock ¹	530,256	600,953	618,067	627,410	629,284
Microform Units	1,063,806	1,036,552	1,050,336	1,053,570	1,050,660
Government Documents	552,573	564,616	573,052	543,047	540,348
Current Periodicals	4,122	5,429	6,528	8,754	11,678
Circulation ²	207,190	188,334	179,718	175,233	176,445
Expenditures	\$4,681,767	\$5,022,476	\$5,565,400	\$6,376,441	\$7,067,884
Interlibrary Transactions					
Net Loans	8,013	8,234	8,785	9,742	10,906
Net Borrowing	12,017	11,701	11,957	12,709	11,290
Weekly Hours of Service	105	105	105	105	111

NOTE: Additional electronic books, databases, statistical reports, full-text poetry, and online journals are available through VIVA, the Virtual Library of Virginia.

¹ Includes government document bookstock for years 2002 and later.

² Includes initial checkouts and renewals for years 2002 and later; does not include reserves.

SOURCE: Internal library statistics. Expenditures data comes from Accounting Services.

TABLE 3-9
ON AND OFF-CAMPUS FIRST MAJORS BY COLLEGE AND
FULL-TIME/PART-TIME STATUS,
FALL 2006

CIP CODE	MAJOR	FULL- TIME UGRAD	PART- TIME UGRAD	FULL- TIME GRAD	PART- TIME GRAD	GRAND TOTAL	TEACHER EDUC
College of Arts & Letters							
45.0201	Anthropology	106	5	-	-	111	1
09.0101	Communication Studies	447	7	-	-	454	1
23.0101	English	466	19	20	7	512	76
54.0101	History	250	13	23	11	297	5
45.0101	Interdisciplinary Social Science	145	2	-	-	147	72
45.0901	International Affairs	280	2	-	-	282	-
22.0201	Justice Studies	219	1	-	-	220	-
09.0101	Media Arts & Design	707	10	-	-	717	3
16.0101	Modern Foreign Languages	123	7	-	-	130	22
38.9999	Philosophy & Religion	104	2	-	-	106	1
45.1001	Political Science	363	8	-	-	371	1
44.0401	Public Administration	99	3	13	12	127	3
45.1101	Sociology	130	8	-	-	138	9
23.1101	Technical & Scientific Communication	78	7	8	10	103	1
	COLLEGE TOTAL	3,517	94	64	40	3,715	195
College of Business							
52.0301	Accounting	527	10	55	5	597	3
52.0201	Business Administration	-	-	16	87	103	-
11.0401	Computer Information Systems	129	8	-	-	137	-
45.0601	Economics	67	2	-	-	69	-
52.0601	Economics (Business)	93	3	-	-	96	-
52.0801	Finance	631	12	-	-	643	-
52.0901	Hospitality & Tourism Management	310	5	-	-	315	-
52.1101	International Business	315	5	-	-	320	-
52.0201	Management	711	19	-	-	730	2
52.1401	Marketing	751	8	-	-	759	-
52.0899	Quantitative Finance	66	0	-	-	66	-
	COLLEGE TOTAL	3,600	72	71	92	3,835	5

TABLE 3-9 CONTINUED
ON AND OFF-CAMPUS FIRST MAJORS BY COLLEGE AND
FULL-TIME/PART-TIME STATUS,
FALL 2006

CIP CODE	MAJOR	FULL- TIME UGRAD	PART- TIME UGRAD	FULL- TIME GRAD	PART- TIME GRAD	GRAND TOTAL	TEACHER EDUC
College of Education							
13.1201	Adult Education/Human Res. Dev.	-	-	10	7	17	-
13.0101	Education	-	-	144	30	174	154
24.0101	Individualized Study	21	64	-	-	85	1
24.0101	Interdisciplinary Liberal Studies	803	6	-	-	809	476
13.1001	Special Education	-	-	50	6	56	47
	COLLEGE TOTAL	824	70	204	43	1,141	678
College of Integrated Science & Technology							
42.1901	Assessment & Measurement (Ph.D.)	-	-	17	3	20	-
51.0913	Athletic Training	133	0	-	-	133	2
51.0202	Audiology (Au.D.)	-	-	28	0	28	-
42.0101	Combined-Integrated Psychology (Psy.D./Ph.D.)	-	-	18	3	21	-
51.0203	Communication Sciences & Disorders	219	3	-	-	222	5
51.0203	Communication Sciences & Disorders (Ph.D.)	-	-	4	5	9	-
11.0101	Computer Science	216	16	16	70	318	1
13.1101	Counseling Psychology	-	-	60	22	82	1
13.9999	Counseling Psychology	-	-	4	5	9	1
19.0501	Dietetics	111	6	-	-	117	1
45.0701	Geographic Science	105	7	-	-	112	1
13.1307	Health Education	-	-	30	14	44	-
51.1504	Health Sciences	711	11	-	-	722	2
51.0701	Health Services Administration	59	3	-	-	62	-
30.1501	Integrated Science & Technology	292	6	14	11	323	-
31.0501	Kinesiology	619	30	51	19	719	54
51.1601	Nursing	580	15	-	-	595	1
51.1603	Nursing	-	-	10	7	17	-
51.2306	Occupational Therapy	-	-	23	0	23	-
51.0912	Physician Assistant Studies	-	-	32	1	33	-
42.0101	Psychological Sciences	-	-	14	5	19	-
42.0101	Psychology	816	23	-	-	839	17
31.0501	Recreation	2	1	-	-	3	-
42.1701	School Psychology	-	-	10	0	10	0
13.9999	School Psychology	-	-	12	10	22	0
44.0701	Social Work	155	13	-	-	168	2
51.0203	Speech Pathology	-	-	48	7	55	-
	COLLEGE TOTAL	4,018	134	391	182	4,725	88

TABLE 3-9 CONTINUED
ON AND OFF-CAMPUS FIRST MAJORS BY COLLEGE AND
FULL-TIME/PART-TIME STATUS,
FALL 2006

CIP CODE	MAJOR	FULL- TIME UGRAD	PART- TIME UGRAD	FULL- TIME GRAD	PART- TIME GRAD	GRAND TOTAL	<i>TEACHER EDUC</i>
College of Science & Mathematics							
26.0101	Biology	745	24	11	2	782	15
40.0501	Chemistry	158	6	-	-	164	5
40.0601	Geology	50	2	-	-	52	3
13.1311	Mathematics	-	-	0	6	6	0
27.0101	Mathematics	136	7	-	-	143	31
40.0801	Physics	96	5	-	-	101	0
27.0101	Statistics	9	0	-	-	9	-
	COLLEGE TOTAL	1,194	44	11	8	1,257	54
College of Visual & Performing Arts							
50.0701	Art	464	11	8	8	491	47
50.0703	Art History	44	4	-	-	48	-
50.0903	Music	377	12	13	3	405	89
50.0501	Theatre & Dance	167	4	-	-	171	3
	COLLEGE TOTAL	1,052	31	21	11	1,115	139
Interdisciplinary & Undeclared							
26.1201	Biotechnology	56	2	-	-	58	-
90.0000	Undeclared	935	10	-	-	945	-
	GRAND TOTAL	15,196	457	762	376	16,791	1,159

NOTE: The “*TEACHER EDUC*” column indicates the number of students included in the “GRAND TOTAL” who are also enrolled in a professional teacher licensure program. Non-degree seeking students are not included.

SOURCE: Fall Student Census.

TABLE 3-10
ON AND OFF-CAMPUS FIRST MAJORS BY RACE,
FALL 2006

CIP CODE	MAJOR	SCHEV	AFRICAN AMERICAN	AMERICAN INDIAN	ASIAN/ PAC.ISL	HISPANIC	NR		UN- REPORTED	TOTAL
		PROGRAM LEVEL					WHITE	ALIEN		
52.0301	Accounting	40	29	0	60	11	407	6	24	537
52.0301	Accounting	70	1	0	6	0	50	2	1	60
13.1201	Adult Education/Human Res. Dev.	70	3	0	0	0	13	0	1	17
45.0201	Anthropology	40	2	1	3	2	99	0	4	111
50.0701	Art	40	7	3	20	8	417	4	16	475
50.0701	Art	70	0	0	1	0	15	0	0	16
50.0703	Art History	40	0	0	2	0	43	0	3	48
42.1901	Assessment & Measurement (Ph.D.)	85	2	0	0	0	15	3	0	20
51.0913	Athletic Training	40	4	1	5	4	116	1	2	133
51.0202	Audiology (Au.D.)	85	0	0	0	0	28	0	0	28
26.0101	Biology	40	36	1	76	27	581	5	43	769
26.0101	Biology	70	0	0	0	0	11	1	1	13
26.1201	Biotechnology	40	2	0	3	0	49	0	4	58
52.0201	Business Administration	70	4	1	8	0	81	3	6	103
40.0501	Chemistry	40	9	1	19	6	123	0	6	164
42.0101	Combined-Integrated Psychology (Psy.D./Ph.D.)	85	0	0	1	1	13	4	2	21
51.0203	Communication Sciences & Disorders	40	7	0	4	3	198	0	10	222
51.0203	Communication Sciences & Disorders (Ph.D.)	85	0	0	0	0	9	0	0	9
09.0101	Communication Studies	40	13	1	14	7	399	5	15	454
11.0401	Computer Information Systems	40	10	0	12	4	104	4	3	137
11.0101	Computer Science	40	5	0	16	3	185	4	19	232
11.0101	Computer Science	70	2	0	3	4	68	7	2	86
13.1101	Counseling Psychology	70	9	0	1	0	71	0	1	82
13.9999	Counseling Psychology	80	0	0	0	1	8	0	0	9
19.0501	Dietetics	40	4	0	4	1	103	0	5	117
45.0601	Economics	40	3	1	6	5	46	4	4	69
52.0601	Economics (Business)	40	2	0	6	4	80	2	2	96
13.0101	Education	70	1	1	2	2	166	0	2	174
23.0101	English	40	10	2	17	10	420	1	25	485
23.0101	English	70	1	0	1	0	21	1	3	27
52.0801	Finance	40	11	0	45	11	531	7	38	643
45.0701	Geographic Science	40	0	1	2	1	102	0	6	112
40.0601	Geology	40	0	0	0	1	46	0	5	52

TABLE 3-10 CONTINUED
ON AND OFF-CAMPUS FIRST MAJORS BY RACE,
FALL 2006

CIP CODE	MAJOR	SCHEV	AFRICAN AMERICAN	AMERICAN INDIAN	ASIAN/ PAC.ISL	HISPANIC	NR		UN- REPORTED	TOTAL
		PROGRAM LEVEL					WHITE	ALIEN		
13.1307	Health Education	70	2	0	1	0	39	1	1	44
51.1504	Health Sciences	40	29	2	44	20	587	2	38	722
51.0701	Health Services Administration	40	6	0	5	2	47	0	2	62
54.0101	History	40	6	2	7	1	232	1	14	263
54.0101	History	70	1	1	0	0	31	0	1	34
52.0901	Hospitality & Tourism Management	40	6	2	15	5	272	1	14	315
24.0101	Individualized Study	40	7	1	0	3	69	0	5	85
30.1501	Integrated Science & Technology	40	8	0	17	6	254	0	13	298
30.1501	Integrated Science & Technology	70	0	0	1	1	19	3	1	25
24.0101	Interdisciplinary Liberal Studies	40	12	2	21	7	736	3	28	809
45.0101	Interdisciplinary Social Science	40	5	0	3	2	123	1	13	147
45.0901	International Affairs	40	8	0	17	16	206	4	31	282
52.1101	International Business	40	5	0	34	23	217	11	30	320
22.0201	Justice Studies	40	9	0	9	8	189	0	5	220
31.0501	Kinesiology	40	58	2	12	14	526	5	32	649
31.0501	Kinesiology	70	4	0	1	1	63	0	1	70
52.0201	Management	40	29	1	21	12	626	10	31	730
52.1401	Marketing	40	14	0	37	12	659	1	36	759
27.0101	Mathematics	40	8	0	6	7	115	2	5	143
13.1311	Mathematics	70	0	0	0	0	6	0	0	6
09.0101	Media Arts & Design	40	13	2	26	15	632	2	27	717
16.0101	Modern Foreign Languages	40	3	0	2	5	113	0	7	130
50.0903	Music	40	21	2	17	9	326	0	14	389
50.0903	Music	70	0	0	0	0	15	0	1	16
51.1601	Nursing	40	21	4	33	8	506	2	21	595
51.1603	Nursing	70	0	0	0	0	17	0	0	17
51.2306	Occupational Therapy	70	0	0	0	0	23	0	0	23
38.9999	Philosophy & Religion	40	1	1	5	3	90	0	6	106
51.0912	Physician Assistant Studies	70	1	0	3	1	27	0	1	33
40.0801	Physics	40	1	1	5	3	78	1	12	101
45.1001	Political Science	40	14	2	17	10	301	1	26	371
42.0101	Psychological Sciences	70	0	0	0	0	19	0	0	19
42.0101	Psychology	40	42	1	29	15	705	9	38	839

TABLE 3-10 CONTINUED
ON AND OFF-CAMPUS FIRST MAJORS BY RACE,
FALL 2006

CIP CODE	MAJOR	SCHEV	AFRICAN AMERICAN	AMERICAN INDIAN	ASIAN/ PAC.ISL	HISPANIC	NR		UN- REPORTED	TOTAL
		PROGRAM LEVEL					WHITE	ALIEN		
44.0401	Public Administration	40	4	0	3	2	76	15	2	102
44.0401	Public Administration	70	2	0	0	0	22	1	0	25
52.0899	Quantitative Finance	40	0	0	9	0	55	1	1	66
31.0501	Recreation	40	0	0	1	0	2	0	0	3
42.1701	School Psychology	70	0	0	0	0	8	0	2	10
13.9999	School Psychology	80	2	0	2	0	18	0	0	22
44.0701	Social Work	40	11	1	3	5	138	0	10	168
45.1101	Sociology	40	13	0	4	4	113	0	4	138
13.1001	Special Education	70	0	0	0	0	55	0	1	56
51.0203	Speech Pathology	70	1	0	1	1	52	0	0	55
27.0101	Statistics	40	0	0	1	0	7	0	1	9
23.1101	Technical & Scientific Communication	40	3	0	8	1	65	0	8	85
23.1101	Technical & Scientific Communication	70	1	0	0	0	16	0	1	18
50.0501	Theatre & Dance	40	5	0	2	4	147	0	13	171
90.0000	Undeclared	40	34	2	37	23	787	8	54	945
TOTALS BY SCHEV PROGRAM LEVEL										
	UNDERGRADUATE	40	550	40	764	353	13,048	123	775	15,653
	GRADUATE	70	33	3	29	10	908	19	27	1,029
	ADVANCED GRADUATE (ED.S)	80	2	0	2	1	26	0	0	31
	DOCTORAL	85	2	0	1	1	65	7	2	78
	GRAND TOTAL		587	43	796	365	14,047	149	804	16,791

SOURCE: Fall Student Census.

TABLE 3-11
ON AND OFF-CAMPUS FIRST MAJORS BY COLLEGE,
FALL 2001 - FALL 2006

CIP CODE	MAJOR	2001	2002	2003	2004	2005	2006
College of Arts & Letters							
45.0201	Anthropology	89	100	95	98	111	111
09.0101	Communication Studies	247	187	190	366	462	454
23.0101	English	481	439	488	483	522	512
54.0101	History	239	236	298	311	307	297
45.0101	Interdisciplinary Social Science	146	145	175	170	171	147
45.0901	International Affairs	166	230	188	247	249	282
22.0201	Justice Studies	-	-	-	4	105	220
09.0101	Media Arts & Design	372	419	448	729	716	717
16.0101	Modern Foreign Languages	83	81	108	108	118	130
38.9999	Philosophy & Religion	56	80	87	96	111	106
45.1001	Political Science	402	504	382	472	429	371
44.0401	Public Administration	122	161	150	171	143	127
45.1101	Sociology	224	231	224	207	161	138
23.1101	Technical & Scientific Communication	94	111	104	93	95	103
	COLLEGE TOTAL	2,721	2,924	2,937	3,555	3,700	3,715
College of Business							
52.0301	Accounting	353	361	393	455	509	597
52.0201	Business Administration	70	88	86	89	83	103
11.0401	Computer Information Systems	643	503	341	233	171	137
45.0601	Economics	114	121	125	80	76	69
52.0601	Economics (Business)	23	43	67	76	108	96
52.0801	Finance	420	479	513	535	608	643
52.0901	Hospitality & Tourism Management	164	165	198	245	292	315
52.1101	International Business	306	288	273	259	293	320
52.0201	Management	440	424	474	575	691	730
52.1401	Marketing	857	823	791	734	711	759
52.0201	Operations Management	17	22	16	4	1	0
52.0899	Quantitative Finance	25	31	53	63	62	66
	COLLEGE TOTAL	3,432	3,348	3,330	3,348	3,605	3,835

TABLE 3-11 CONTINUED

**ON AND OFF-CAMPUS FIRST MAJORS BY COLLEGE,
FALL 2001 - FALL 2006**

CIP CODE	MAJOR	2001	2002	2003	2004	2005	2006
College of Education							
13.1201	Adult Education/Human Res. Dev.	16	25	26	21	24	17
13.1303	Business & Marketing Education	32	48	47	4	2	0
13.0101	Education	66	66	78	180	204	174
24.0101	Individualized Study	67	82	86	77	97	85
24.0101	Interdisciplinary Liberal Studies	417	572	703	689	736	809
13.1001	Special Education	31	28	31	51	53	56
	COLLEGE TOTAL	629	821	971	1,022	1,116	1,141
College of Integrated Science & Technology							
42.1901	Assessment & Measurement (Ph.D.)	7	7	14	13	17	20
51.0913	Athletic Training	-	-	-	77	103	133
51.0202	Audiology (Au.D.)	-	-	-	-	6	28
42.0101	Combined-Integrated Psychology (Psy.D./Ph.D.)	24	27	26	20	21	21
51.0203	Communication Sciences & Disorders	158	178	199	198	214	222
51.0203	Communication Sciences & Disorders (Ph.D.)	-	11	35	34	27	9
11.0101	Computer Science	407	322	256	323	328	318
13.1101	Counseling Psychology	69	72	59	57	72	82
13.9999	Counseling Psychology (Ed.S.)	14	14	30	29	13	9
19.0501	Dietetics	78	79	92	89	113	117
45.0701	Geographic Science	89	79	87	108	108	112
13.1307	Health Education	28	30	27	33	43	44
51.1504	Health Sciences	636	660	688	664	669	722
51.0701	Health Services Administration	-	-	-	18	35	62
51.0202	Hearing Disorders	19	18	0	0	0	0
30.1501	Integrated Science & Technology	741	634	539	431	350	323
31.0501	Kinesiology	380	449	509	577	685	719
51.1601	Nursing	237	239	329	433	512	595
51.1603	Nursing (M.S.N)	-	-	-	10	19	17
51.2306	Occupational Therapy	-	-	-	-	4	23
51.0912	Physician Assistant Studies	-	-	-	20	39	33
42.0101	Psychological Sciences	17	27	25	21	22	19
42.0101	Psychology	791	835	667	814	823	839
31.0501	Recreation	43	48	44	48	16	3
42.1701	School Psychology	9	14	13	16	10	10
13.9999	School Psychology (Ed.S.)	17	11	13	10	17	22
44.0701	Social Work	132	119	130	140	153	168
51.0203	Speech Pathology	62	65	58	54	60	55
	COLLEGE TOTAL	3,958	3,938	3,840	4,237	4,479	4,725

TABLE 3-11 CONTINUED
ON AND OFF-CAMPUS FIRST MAJORS BY COLLEGE,
FALL 2001 - FALL 2006

CIP CODE	MAJOR	2001	2002	2003	2004	2005	2006
College of Science & Mathematics							
26.0101	Biology	596	663	700	714	743	782
40.0501	Chemistry	108	114	136	145	169	164
40.0601	Geology	66	58	67	57	59	52
13.1311	Mathematics (M.Ed.)	-	-	-	-	4	6
27.0101	Mathematics	83	117	123	144	159	143
40.0801	Physics	68	69	81	83	95	101
27.0101	Statistics	-	-	-	6	7	9
	COLLEGE TOTAL	921	1,021	1,107	1,149	1,236	1,257
College of Visual & Performing Arts							
50.0701	Art	537	555	572	542	524	491
50.0703	Art History	38	53	49	43	51	48
50.0903	Music	371	384	347	378	408	405
50.0501	Theatre & Dance	161	156	162	171	167	171
	COLLEGE TOTAL	1,107	1,148	1,130	1,134	1,150	1,115
Interdisciplinary & Undeclared							
26.1201	Biotechnology	-	-	-	-	21	58
90.0000	Undeclared	2,071	2,016	2,179	1,204	1,047	945
	GRAND TOTAL	14,839	15,216	15,494	15,649	16,354	16,791

SOURCE: Fall Student Census.

TABLE 3-12
ON AND OFF-CAMPUS FIRST MAJORS BY COLLEGE, SEX,
AND FULL-TIME/PART-TIME STATUS,
FALL 2006

COLLEGE	FULL-TIME UGRAD	PART-TIME UGRAD	FULL-TIME GRAD	PART-TIME GRAD	GRAND TOTAL
College of Art & Letters					
Male	1,301	52	34	18	1,405
Female	2,216	42	30	22	2,310
TOTAL	3,517	94	64	40	3,715
College of Business					
Male	2,005	51	42	63	2,161
Female	1,595	21	29	29	1,674
TOTAL	3,600	72	71	92	3,835
College of Education					
Male	47	22	36	17	122
Female	777	48	168	26	1,019
TOTAL	824	70	204	43	1,141
College of Integrated Science & Technology					
Male	1,261	55	88	102	1,506
Female	2,757	79	303	80	3,219
TOTAL	4,018	134	391	182	4,725
College of Science & Mathematics					
Male	514	26	5	3	548
Female	680	18	6	5	709
TOTAL	1,194	44	11	8	1,257
College of Visual & Performing Arts					
Male	325	11	11	4	351
Female	727	20	10	7	764
TOTAL	1,052	31	21	11	1,115
Interdisciplinary					
Male	37	1	-	-	38
Female	19	1	-	-	20
TOTAL	56	2	-	-	58
Undeclared					
Male	400	7	-	-	407
Female	535	3	-	-	538
TOTAL	935	10	-	-	945
GRAND TOTAL	15,196	457	762	376	16,791

SOURCE: Fall Student Census.

TABLE 3-13

**TEACHER LICENSURE PROGRAMS HEADCOUNT BY
SCHEV PROGRAM DESCRIPTION,
FALL 2006**

SCHEV DESCRIPTION	STATUS	UNDER- GRADUATE	GRADUATE	NON-DEGREE SEEKING	TOTAL
Elementary	Full-time	267	17	34	318
	Part-time	4	1	1	6
	TOTAL	271	18	35	324
Middle School	Full-time	194	56	1	251
	Part-time	3	2	2	7
	TOTAL	197	58	3	258
Secondary	Full-time	209	70	0	279
	Part-time	5	2	3	10
	TOTAL	214	72	3	289
Multi-Level	Full-time	175	9	4	188
	Part-time	5	2	10	17
	TOTAL	180	11	14	205
Counselors	Full-time	0	1	0	1
	Part-time	0	1	0	1
	TOTAL	0	2	0	2
Principals & Administrators	Full-time	0	0	0	0
	Part-time	0	7	0	7
	TOTAL	0	7	0	7
Special Education	Full-time	79	43	0	122
	Part-time	0	2	0	2
	TOTAL	79	45	0	124
Other	Full-time	0	0	0	0
	Part-time	0	0	0	0
	TOTAL	0	0	0	0
Unknown	Full-time	4	1	0	5
	Part-time	0	0	0	0
	TOTAL	4	1	0	5
GRAND TOTAL		945	214	55	1,214

SOURCE: Fall Student Census and Education Support Center.

Faculty and Staff



TABLE 4-1
FULL-TIME INSTRUCTIONAL FACULTY BY DEPARTMENT
AND TENURE, FALL 2006

DEPARTMENT	NUMBER FACULTY	NUMBER HAVING TENURE			Total	PERCENT TENURED
		Asst Prof	Assoc Prof	Prof		
College of Arts & Letters						
School of Communication Studies	38	0	2	4	6	16%
English	25	0	8	7	15	60%
Foreign Lang. & Literatures	19	0	3	5	8	42%
History	31	0	8	12	20	65%
Center for Liberal & Applied Social Sciences	8	0	2	1	3	38%
School of Media Arts & Design	19	0	7	9	16	84%
Philosophy & Religion	19	0	4	6	10	53%
Political Science	20	0	3	7	10	50%
Sociology & Anthropology	22	0	3	6	9	41%
Technical & Scientific Communication	5	0	1	2	3	60%
Writing Program	22	0	5	0	5	23%
COLLEGE TOTAL	228	0	46	59	105	46%
College of Business						
COLLEGE TOTAL	121	1	30	36	67	55%
College of Education						
Dean's Office	1	0	0	1	1	100%
Education Departments	45	0	9	5	14	31%
COLLEGE TOTAL	46	0	9	6	15	33%
College of Integrated Science & Technology						
CISAT Lab Operations	3	0	1	0	1	33%
Communication Sciences & Disorders	14	0	3	5	8	57%
Computer Science	17	0	2	5	7	41%
Dean's Office	2	0	1	1	2	100%
Health Sciences	31	0	3	7	10	32%
Institute for Innovation in Health & Human Services	4	0	1	1	2	50%
Integrated Science & Technology	48	0	1	20	21	44%
Kinesiology	16	0	3	3	6	38%
Nursing	20	0	4	2	6	30%
Psychology	23	0	9	8	17	74%
Psychology, Graduate	18	0	4	11	15	83%
Social Work	8	0	1	1	2	25%
COLLEGE TOTAL	204	0	33	64	97	48%

TABLE 4-1 CONTINUED
FULL-TIME INSTRUCTIONAL FACULTY BY DEPARTMENT
AND TENURE, FALL 2006

DEPARTMENT	NUMBER FACULTY	NUMBER HAVING TENURE			Total	PERCENT TENURED
		Asst Prof	Assoc Prof	Prof		
College of Science & Mathematics						
Biology	40	0	14	7	21	53%
Chemistry	18	0	4	5	9	50%
Dean's Office	1	0	0	1	1	100%
Geology & Environmental Science	12	0	2	5	7	58%
Mathematics & Statistics	41	0	6	16	22	54%
Physics	16	1	2	5	8	50%
COLLEGE TOTAL	128	1	28	39	68	53%
College of Visual & Performing Arts						
School of Art & Art History	28	0	5	11	16	57%
School of Music	41	0	9	13	22	54%
School of Theatre & Dance	13	0	1	7	8	62%
COLLEGE TOTAL	82	0	15	31	46	56%
Center for Assessment & Research Studies	7	0	0	2	2	29%
Cross Disciplinary Studies	1	0	0	1	1	100%
Center for Faculty Innovation	1	0	0	1	1	100%
Furious Flower Poetry Center	2	0	0	1	1	50%
International Education	1	0	0	0	0	0%
Learning Resource Center	1	0	0	0	0	0%
University Studies	9	1	1	4	6	67%
GRAND TOTAL	831	3	162	244	409	49%

NOTE: Includes faculty on educational leave with pay.

SOURCE: Fall Personnel Census and Academic Affairs.

TABLE 4-2

**FULL-TIME INSTRUCTIONAL FACULTY BY SEX AND TERMINAL DEGREE,
FALL 2006**

DEPARTMENT	NUMBER FACULTY		NUMBER TERMINAL		PERCENT TERMINAL
	Male	Female	Male	Female	
College of Arts & Letters					
School of Communication Studies	21	17	12	9	55%
English	9	16	8	14	88%
Foreign Lang. & Literatures	9	10	6	6	63%
History	22	9	21	9	97%
Center for Liberal & Applied Social Sciences	4	4	3	4	88%
School of Media Arts & Design	14	5	7	3	53%
Philosophy & Religion	16	3	16	3	100%
Political Science	14	6	12	5	85%
Sociology & Anthropology	14	8	13	8	95%
Technical & Scientific Communication	1	4	1	3	80%
Writing Program	9	13	4	5	41%
COLLEGE TOTAL	133	95	103	69	75%
College of Business	89	32	66	19	70%
COLLEGE TOTAL	89	32	66	19	70%
College of Education					
Dean's Office	1	0	1	0	100%
Education Departments	10	35	9	25	76%
COLLEGE TOTAL	11	35	10	25	76%
College of Integrated Science & Technology					
CISAT Lab Operations	2	1	2	0	67%
Communication Sciences & Disorders	7	7	6	5	79%
Computer Science	15	2	14	1	88%
Dean's Office	1	1	1	1	100%
Health Sciences	12	19	6	14	65%
Institute for Innovation in Health & Human Services	2	2	2	1	75%
Integrated Science & Technology	36	12	32	12	92%
Kinesiology	7	9	6	6	75%
Nursing	0	20	0	6	30%
Psychology	13	10	12	10	96%
Psychology, Graduate	10	8	10	8	100%
Social Work	0	8	0	8	100%
COLLEGE TOTAL	105	99	91	72	80%

TABLE 4-2 CONTINUED

**FULL-TIME INSTRUCTIONAL FACULTY BY SEX AND TERMINAL DEGREE,
FALL 2006**

DEPARTMENT	NUMBER FACULTY		NUMBER TERMINAL		PERCENT TERMINAL
	Male	Female	Male	Female	
College of Science & Mathematics					
Biology	22	18	20	16	90%
Chemistry	9	9	9	8	94%
Dean's Office	0	1	0	1	100%
Geology & Environmental Science	10	2	10	2	100%
Mathematics & Statistics	27	14	26	10	88%
Physics	14	2	13	2	94%
COLLEGE TOTAL	82	46	78	39	91%
College of Visual & Performing Arts					
School of Art & Art History	14	14	12	12	86%
School of Music	28	13	19	12	76%
School of Theatre & Dance	6	7	6	6	92%
COLLEGE TOTAL	48	34	37	30	82%
Center for Assessment & Research Studies	2	5	2	5	100%
Cross Disciplinary Studies	0	1	0	1	100%
Center for Faculty Innovation	0	1	0	1	100%
Furious Flower Poetry Center	0	2	0	1	50%
International Education	0	1	0	1	100%
Learning Resource Center	0	1	0	0	0%
University Studies	2	7	2	5	78%
GRAND TOTAL	472	359	389	268	79%

NOTE: Includes faculty on educational leave with pay. Faculty with terminal degrees includes the earned doctorate, the Doctor of Law (LL.D.), and the Master of Fine Arts (M.F.A.) for instructors in the performing arts. The Master of Social Work (M.S.W.) is considered to be the terminal degree for undergraduate social work instruction.

SOURCE: Fall Personnel Census and Academic Affairs.

TABLE 4-3

**ALL FULL-TIME FACULTY BY DOCTORATE SOURCE,
FALL 2006**

INSTITUTION AWARDING DEGREE	NUMBER OF FACULTY
University of Virginia	58
Indiana University-Bloomington	24
Virginia Polytechnic Institute & State University	22
University of North Carolina at Chapel Hill	16
University of Georgia	13
Cornell University	11
Virginia Commonwealth University	11
Ohio State University-Main Campus	9
University of Illinois at Champaign-Urbana	9
Duke University	8
Purdue University	8
Southern Illinois University-Carbondale	8
Florida State University	7
Temple University	7
University of Maryland-College Park	7
University of Michigan-Ann Arbor	7
University of Wisconsin-Madison	7
Louisiana State University & A&M College	6
Michigan State University	6
Ohio University-Main Campus	6
Pennsylvania State University-All Campuses	6
University of Chicago	6
University of Florida	6
University of Massachusetts-Amherst	6
University of North Carolina at Greensboro	6
University of Pennsylvania	6
University of South Carolina-Columbia	6
University of Tennessee at Knoxville	6
University of Texas at Austin	6

NOTE: An additional 154 institutions were each represented by five or fewer faculty.

SOURCE: Fall Personnel Census and Human Resources.

TABLE 4-4

**FULL-TIME INSTRUCTIONAL FACULTY, AVERAGE ACADEMIC TERM SALARY
AND COMPENSATION BY RANK, 2002-03 - 2006-07**

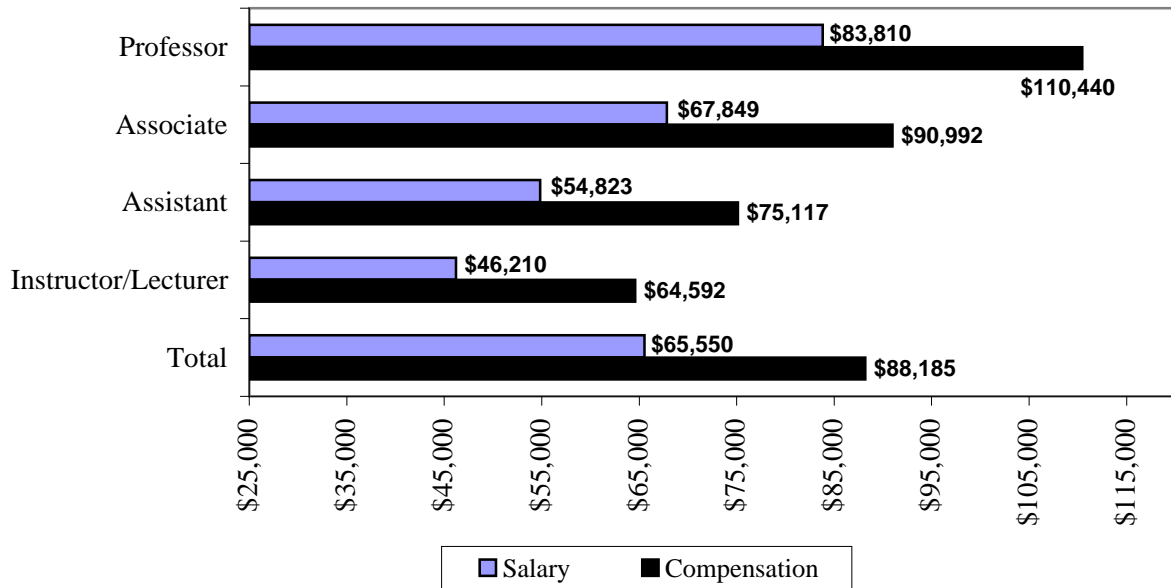
	2002-03	2003-04	2004-05	2005-06	2006-07
Professor					
Number	228	221	220	242	253
Salary	\$71,690	\$73,066	\$77,648	\$81,204	\$83,810
Compensation	\$88,978	\$93,048	\$99,966	\$104,833	\$110,440
Associate Professor					
Number	181	189	191	191	202
Salary	\$58,312	\$59,758	\$62,798	\$66,051	\$67,849
Compensation	\$74,325	\$77,559	\$82,550	\$87,061	\$90,992
Assistant Professor					
Number	228	235	249	251	254
Salary	\$46,620	\$47,852	\$50,559	\$53,561	\$54,823
Compensation	\$60,802	\$63,350	\$67,825	\$72,017	\$75,117
Instructor/Lecturer					
Number	67	76	89	111	122
Salary	\$39,601	\$41,483	\$42,936	\$44,301	\$46,210
Compensation	\$52,242	\$55,542	\$58,452	\$60,692	\$64,592
All Ranks					
Number	704	721	749	795	831
Salary	\$57,077	\$58,030	\$60,731	\$63,684	\$65,550
Compensation	\$72,589	\$75,355	\$79,907	\$84,039	\$88,185

NOTE: Compensation equals salary plus fringe benefits. Includes Academic Term (9 month) and 12 month faculty, with the latter converted to an Academic Term basis.

SOURCE: American Association of University Professors Annual Survey of Faculty Compensation.

FIGURE 4-1

INSTRUCTIONAL FACULTY, AVERAGE SALARY BY RANK, FALL 2006



NOTE: Compensation equals salary plus fringe benefits. Includes Academic Term (9 month) and 12 month faculty, with the latter converted to an Academic Term basis.

SOURCE: American Association of University Professors Annual Survey of Faculty Compensation.

TABLE 4-5

**FULL-TIME EDUCATIONAL AND GENERAL STAFF BY FUNCTIONAL CATEGORY,
FALL 2002 - FALL 2006**

CATEGORY	2002	2003	2004	2005	2006
Instruction					
Faculty (Includes department heads)	703	715	742	785	820
Administrative Faculty	3	3	2	4	3
Support Services - Classified	90	92	93	96	92
Support Services - Professional Faculty	7	9	11	11	14
TOTAL	803	819	848	896	929
Academic Support					
Administrative Faculty	13	14	17	17	15
Support Services - Classified	81	98	99	110	114
Support Services - Professional Faculty	45	31	32	34	34
Library - Professional Faculty	20	20	21	20	20
TOTAL	159	163	169	181	183
Student Services					
Administrative Faculty	6	7	9	7	8
Support Services - Classified	44	45	46	50	52
Support Services - Professional Faculty	33	29	38	42	50
TOTAL	83	81	93	99	110
Institutional Support					
Administrative Faculty	21	17	19	22	22
Support Services - Classified	197	195	201	204	196
Support Services - Professional Faculty	18	23	24	33	38
TOTAL	236	235	244	259	256
Operation & Maintenance of Physical Plant					
Administrative Faculty	1	2	2	2	3
Support Services - Classified	158	165	171	191	225
Support Services - Professional Faculty	1	0	0	0	0
TOTAL	160	167	173	193	228
GRAND TOTAL	1,441	1,465	1,527	1,628	1,706
Faculty Not E&G Funded	4	8	7	11	11

NOTE: Filled positions as of November 1, 2006.

SOURCE: Fall Personnel Census and Accounting Services.

TABLE 4-6

**ALL FULL-TIME FACULTY BY COLLEGE, TENURE STATUS,
SEX AND ETHNICITY, FALL 2006**

TENURE STATUS	TOTAL	MALE	FEMALE	AFRICAN- AMERICAN	AMERICAN INDIAN	ASIAN/ PACIFIC ISL.	WHITE	HISPANIC	NR ALIEN	UN- REPORTED
College of Arts & Letters										
Tenured	105	67	38	5	0	2	93	4	1	0
Tenure Track	69	38	31	1	0	3	57	1	5	2
Nontenured	54	28	26	1	0	2	46	1	3	1
TOTAL	228	133	95	7	0	7	196	6	9	3
College of Business										
Tenured	67	51	16	2	0	4	60	0	0	1
Tenure Track	22	19	3	0	0	1	14	1	5	1
Nontenured	32	19	13	3	0	1	28	0	0	0
TOTAL	121	89	32	5	0	6	102	1	5	2
College of Education										
Tenured	15	4	11	1	0	0	13	1	0	0
Tenure Track	21	5	16	0	0	0	20	1	0	0
Nontenured	10	2	8	0	0	0	10	0	0	0
TOTAL	46	11	35	1	0	0	43	2	0	0
College of Integrated Science & Technology										
Tenured	97	57	40	5	1	0	90	1	0	0
Tenure Track	48	24	24	2	0	2	37	1	4	2
Nontenured	59	24	35	1	0	0	55	0	0	3
TOTAL	204	105	99	8	1	2	182	2	4	5
College of Science & Mathematics										
Tenured	68	55	13	0	0	2	65	0	1	0
Tenure Track	34	18	16	1	0	1	24	0	6	2
Nontenured	26	9	17	0	0	1	21	0	3	1
TOTAL	128	82	46	1	0	4	110	0	10	3
College of Visual & Performing Arts										
Tenured	46	30	16	0	0	3	43	0	0	0
Tenure Track	30	15	15	2	0	0	28	0	0	0
Nontenured	6	3	3	0	0	0	6	0	0	0
TOTAL	82	48	34	2	0	3	77	0	0	0

TABLE 4-6 CONTINUED

**ALL FULL-TIME FACULTY BY COLLEGE, TENURE STATUS,
SEX AND ETHNICITY, FALL 2006**

TENURE STATUS	TOTAL	MALE	FEMALE	AFRICAN- AMERICAN	AMERICAN INDIAN	ASIAN/ PACIFIC ISL.	WHITE	HISPANIC	NR ALIEN	UN- REPORTED
Other										
Tenured	11	3	8	1	0	0	10	0	0	0
Tenure Track	4	1	3	0	0	0	4	0	0	0
Nontenured	7	0	7	0	0	0	7	0	0	0
TOTAL	22	4	18	1	0	0	21	0	0	0
INSTRUCTIONAL FACULTY										
TOTAL	831	472	359	25	1	22	731	11	28	13
Administrative & Professional - Library Admin.										
Tenured	8	2	6	1	0	0	7	0	0	0
Tenure Track	8	1	7	0	0	0	8	0	0	0
Nontenured	6	3	3	0	0	0	6	0	0	0
TOTAL	22	6	16	1	0	0	21	0	0	0
Administrative & Professional - Other										
Tenured	13	11	2	1	0	0	12	0	0	0
Tenure Track	4	2	2	0	0	0	3	1	0	0
Nontenured	343	155	188	31	0	1	297	2	6	6
TOTAL	360	168	192	32	0	1	312	3	6	6
ADMINISTRATIVE & PROFESSIONAL										
TOTAL	382	174	208	33	0	1	333	3	6	6
GRAND TOTAL	1,213	646	567	58	1	23	1,064	14	34	19

SOURCE: Fall Personnel Census and Academic Affairs.

TABLE 4-7

**INSTRUCTIONAL FACULTY BY EMPLOYMENT STATUS, COLLEGE
AND DEPARTMENT, FALL 2006**

DEPARTMENT	FULL- TIME	PART- TIME	GTA ¹	OTHER ²	TOTAL
College of Arts & Letters					
School of Communication Studies	38	1	0	1	40
Dean's Office	0	1	0	0	1
English	25	18	5	1	49
Foreign Lang. & Literatures	19	40	0	2	61
History	31	10	10	0	51
Center for Liberal & Applied Social Sciences	8	3	0	0	11
School of Media Arts & Design	19	3	0	2	24
Philosophy & Religion	19	10	0	1	30
Political Science	20	10	5	0	35
Sociology & Anthropology	22	2	0	0	24
Technical & Scientific Communication	5	2	5	1	13
Writing Program	22	10	2	0	34
COLLEGE TOTAL	228	110	27	8	373
College of Business	121	10	23	4	158
COLLEGE TOTAL	121	10	23	4	158
College of Education					
Adult Degree Program	0	3	0	9	12
Dean's Office	1	0	1	0	2
Education Departments	45	50	13	13	121
COLLEGE TOTAL	46	53	14	22	135
College of Integrated Science & Technology					
CISAT Lab Operations	3	0	0	0	3
Communication Sciences & Disorders	14	3	2	0	19
Computer Science	17	1	5	0	23
Dean's Office	2	0	3	0	5
Health Sciences	31	7	9	8	55
Institute for Innovation in Health & Human Services	4	0	0	0	4
Integrated Science & Technology	48	4	10	1	63
Kinesiology	16	13	15	8	52
Nursing	20	0	3	0	23
Psychology	23	16	7	4	50
Psychology, Graduate	18	7	14	4	43
Social Work	8	3	3	1	15
COLLEGE TOTAL	204	54	71	26	355

TABLE 4-7 CONTINUED

**INSTRUCTIONAL FACULTY BY EMPLOYMENT STATUS, COLLEGE
AND DEPARTMENT, FALL 2006**

DEPARTMENT	FULL- TIME	PART- TIME	GTA ¹	OTHER ²	TOTAL
College of Science & Mathematics					
Biology	40	5	9	0	54
Chemistry	18	6	0	2	26
Dean's Office	1	0	0	1	2
Geology & Environmental Science	12	2	0	0	14
Mathematics & Statistics	41	13	1	1	56
Physics	16	9	0	1	26
COLLEGE TOTAL	128	35	10	5	178
College of Visual & Performing Arts					
School of Art & Art History	28	11	8	5	52
School of Music	41	15	12	2	70
School of Theatre & Dance	13	9	0	3	25
COLLEGE TOTAL	82	35	20	10	147
College of Graduate & Outreach Programs					
Dean's Office	0	0	0	1	1
COLLEGE TOTAL	0	0	0	1	1
Center for Assessment & Research Studies	7	0	0	1	8
Cross Disciplinary Studies	1	2	0	0	3
Center for Faculty Innovation	1	0	0	0	1
Furious Flower Poetry Center	2	0	0	0	2
International Education	1	0	0	0	1
Learning Resource Center	1	0	1	0	2
University Studies	9	1	0	1	11
GRAND TOTAL	831	300	166	78	1,375

NOTE: Part-time faculty are reported once in the department for which they teach the most credit hours.

¹"GTA" includes all graduate student positions in the departments.

²"OTHER" faculty include full-time administrators, intercollegiate athletics coaches, and classified staff who teach part-time in one of the instructional departments.

SOURCE: Fall Personnel Census and Student Administration System Data.

TABLE 4-8

**FULL-TIME CLASSIFIED STAFF BY EEO OCCUPATIONAL CATEGORY,
SEX AND ETHNICITY, FALL 2006**

CATEGORY	AFRICAN- AMERICAN	AMERICAN INDIAN	ASIAN/ PACIFIC ISL.	HISPANIC	WHITE	NR ALIEN	UN- REPORTED	TOTAL
Administrators & Managers								
Male	0	0	0	0	6	0	0	6
Female	0	0	0	0	4	0	0	4
TOTAL	0	0	0	0	10	0	0	10
Office & Clerical								
Male	1	0	0	0	27	0	1	29
Female	2	0	1	1	270	0	3	277
TOTAL	3	0	1	1	297	0	4	306
Professional Nonfaculty								
Male	0	0	1	1	69	0	0	71
Female	2	0	1	1	167	0	1	172
TOTAL	2	0	2	2	236	0	1	243
Service/Maintenance								
Male	4	0	1	1	53	0	0	59
Female	6	0	0	4	163	2	3	178
TOTAL	10	0	1	5	216	2	3	237
Skilled Crafts								
Male	0	0	0	0	139	0	1	140
Female	0	0	0	0	3	0	0	3
TOTAL	0	0	0	0	142	0	1	143
Technicians & Paraprofessionals								
Male	1	0	0	1	109	1	1	113
Female	1	1	1	0	87	2	2	94
TOTAL	2	1	1	1	196	3	3	207
Total Classified Staff								
Male	6	0	2	3	403	1	3	418
Female	11	1	3	6	694	4	9	728
GRAND TOTAL	17	1	5	9	1,097	5	12	1,146

SOURCE: Fall Personnel Census.

Facilities and Finance



TABLE 5-1

**BIENNIAL GENERAL FUND APPROPRIATIONS FOR OPERATING EXPENSES
AND CAPITAL OUTLAY, 1972-74 - 2006-08**

BIENNIUM	OPERATING EXPENSES	CAPITAL OUTLAY
1972-74	\$ 10,526,000	\$ 3,740,780
1974-76	14,153,755	1,217,200
1976-78	20,241,600	145,620
1978-80 ¹	26,542,375	2,932,325
1980-82	33,687,955	2,583,850
1982-84	37,899,145	1,523,280
1984-86	43,156,920	8,210,600
1986-88	54,203,641	2,184,990
1988-90	65,086,881	12,744,995
1990-92 ²	64,314,591	1,656,000
1992-94 ³	57,351,203	34,310,787
1994-96	70,424,607	4,669,392
1996-98	83,908,588	1,239,505
1998-00	115,585,470	3,399,927
2000-02	138,638,018	3,206,668
2002-04 ⁴	128,625,934	124,169,100
2004-06	129,713,843	0
2006-08	157,101,378	31,497,832

NOTE: As appropriated at the beginning of the biennium. Includes financial aid. Does not include reversions, supplemental appropriations, reappropriations, or amounts allocated from central accounts.

¹In 1978-80, \$2,900,500 was authorized through a general obligation bond to be repaid by the General Fund.

²For 1990-92, the operating expenses appropriation is as contained in the revised 1991-92 Appropriation Act.

³In 1992-94, \$34,260,787 was authorized through a general obligation bond to be repaid by the General Fund.

⁴In 2002-04, \$99,919,900 was authorized through a general obligation bond to be repaid by the General Fund.

SOURCE: University Budget Management.

TABLE 5-2

**STATEMENT OF REVENUES, EXPENSES, AND CHANGES IN NET ASSETS,
FISCAL YEARS 2003-04 - 2005-06**

REVENUES	2003-04	2004-05	2005-06
Tuition & Fees	\$ 73,842,646	\$ 82,010,796	\$ 95,374,085
Federal Operating Grants & Contracts	15,007,987	14,749,536	15,821,067
State Operating Grants & Contracts	7,770,200	6,822,323	5,372,128
Local/Private Operating Grants & Contracts	3,388,905	3,336,876	3,905,622
Auxiliary Enterprises	87,599,638	90,297,115	101,505,935
Other Operating Revenues	762,289	787,947	871,228
State Appropriations	57,597,656	63,532,170	73,440,683
Gifts	533,086	567,539	670,385
Investment Income	1,183,162	1,326,288	1,990,436
Other Nonoperating Revenues	584,593	0	0
Capital Appropriations	18,456,330	34,231,477	7,142,026
Capital Grants & Gifts	4,214,940	4,693,523	4,566,290
Other Revenues & Additions	174	0	0
TOTAL REVENUES	\$ 270,941,606	\$ 302,355,590	\$ 310,659,885
*	*	*	*
EXPENSES & OTHER DEDUCTIONS	2003-04	2004-05	2005-06
Instruction	\$ 74,910,956	\$ 81,778,715	\$ 90,344,970
Research	5,495,158	5,030,508	4,801,752
Public Service	10,994,405	10,358,294	9,879,601
Academic Support	20,240,974	22,551,221	23,781,135
Student Services	6,533,219	7,899,551	8,798,994
Institutional Support	12,277,727	14,669,492	15,220,675
Operation & Maintenance of Plant	13,986,765	16,175,207	20,188,146
Scholarships & Fellowships	4,233,169	4,721,143	5,618,439
TOTAL EDUCATIONAL & GENERAL ESTIMATE	\$ 148,672,373	\$ 163,184,131	\$ 178,633,712
Depreciation	\$ 15,387,782	\$ 16,651,977	\$ 19,529,873
Auxiliary Enterprises	68,921,216	73,937,527	80,306,853
Nonoperating Interest	3,441,382	3,424,474	3,374,989
Other Nonoperating Expenses & Deductions	781,186	961,657	1,471,595
TOTAL EXPENSES & DEDUCTIONS	\$ 237,203,939	\$ 258,159,766	\$ 283,317,022
*	*	*	*
Increase in net assets	\$ 33,737,667	\$ 44,195,824	\$ 27,342,863
Net assets - beginning of year	235,943,953	269,681,620	313,877,444
NET ASSETS - END OF YEAR	\$ 269,681,620	\$ 313,877,444	\$ 341,220,307

SOURCE: IPEDS Finance Survey.

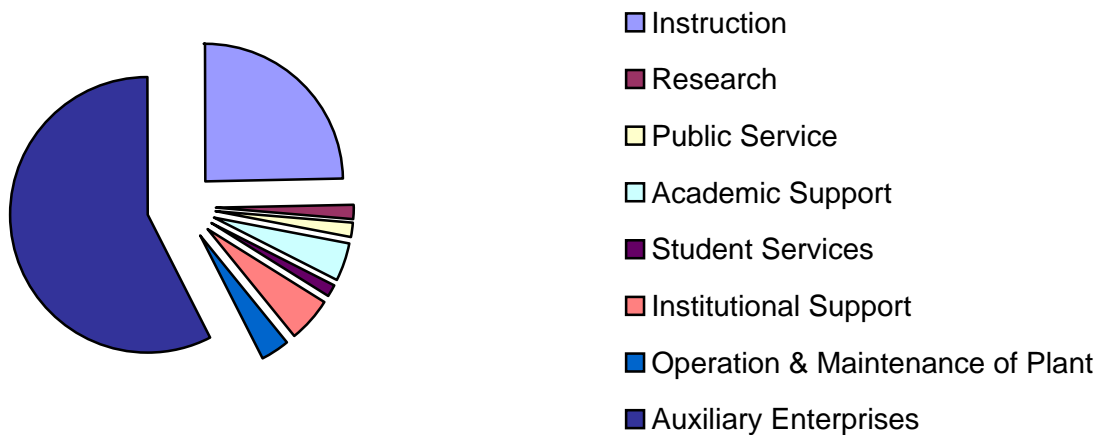
TABLE 5-3
INSTITUTIONAL SPACE PROFILE, FALL 2006

TYPE OF SPACE	OWNED	LEASED	ASSIGNABLE SQUARE FEET
Instruction	574,864	94,702	669,566
Research	43,433	4,307	47,740
Public Service	36,501	7,398	43,899
Academic Support	108,358	7,070	115,428
Student Services	38,402	875	39,277
Institutional Support	93,213	48,645	141,858
Operation & Maintenance of Plant	66,269	23,195	89,464
TOTAL EDUCATIONAL & GENERAL	961,040	186,192	1,147,232
Auxiliary Enterprises	1,464,319	94,895	1,559,214
GRAND TOTAL	2,425,359	281,087	2,706,446

NOTE: Does not include unassigned space or space undergoing renovation.

SOURCE: SCHEV Room Inventory as of October 1 each year.

FIGURE 5-1
INSTITUTIONAL SPACE PROFILE, FALL 2006



SOURCE: SCHEV Room Inventory as of October 1 each year.

TABLE 5-4

**CONSOLIDATED STATEMENTS OF ACTIVITIES AND RESOURCE UTILIZATION,
FISCAL YEARS 2004-05 - 2005-06**

REVENUE AND SUPPORT	June 30, 2006	June 30, 2005
Contributions	\$ 10,724,006	\$ 5,017,757
Investment Revenue	3,787,088	2,949,725
Other Revenue	136,227	153,003
TOTAL REVENUE AND SUPPORT	\$ 14,647,321	\$ 8,120,485
EXPENSES		
Educational and General Programs	\$ 4,170,512	\$ 6,255,917
Auxiliary and Support Programs	715,039	669,903
Foundation Management	314,699	302,881
Fund Raising	44,765	63,056
TOTAL EXPENSES	\$ 5,245,015	\$ 7,291,757
CHANGE IN NET ASSETS	\$ 9,402,306	\$ 828,728
NET ASSETS - BEGINNING	49,218,746	48,390,018
NET ASSETS - JUNE 30	\$ 58,621,052	\$ 49,218,746

RESOURCE UTILIZATION

TOTAL EXPENSES	UNRESTRICTED	RESTRICTED	ATHLETICS	TOTAL 2006	TOTAL 2005
Instruction	\$ 20,367	\$ 482,649	-	\$ 503,016	\$ 431,267
Research	9,020	100	-	9,120	8,621
Public Service	9,372	36,631	-	46,003	51,069
Academic Support	25,974	303,265	-	329,239	235,732
Student Support	15,331	48,561	-	63,892	52,506
Institutional Support	301,159	23,621	-	324,780	552,144
Plant Operation, Maintenance	80,891	249,394	\$ 1,149,743	1,480,028	3,639,701
Scholarships, Fellowships	311,925	740,020	362,489	1,414,434	1,280,971
JMU Support Groups	11,487	-	-	11,487	12,962
Intercollegiate Athletics	36,037	-	667,515	703,552	660,847
Foundation Management	314,699	-	-	314,699	302,881
Fund Raising	42,142	176	2,447	44,765	63,056
TOTAL EXPENSES	\$ 1,178,404	\$ 1,884,417	\$ 2,182,194	\$ 5,245,015	\$ 7,291,757

SOURCE: James Madison University Foundation, Inc., Annual Report.

TABLE 5-5

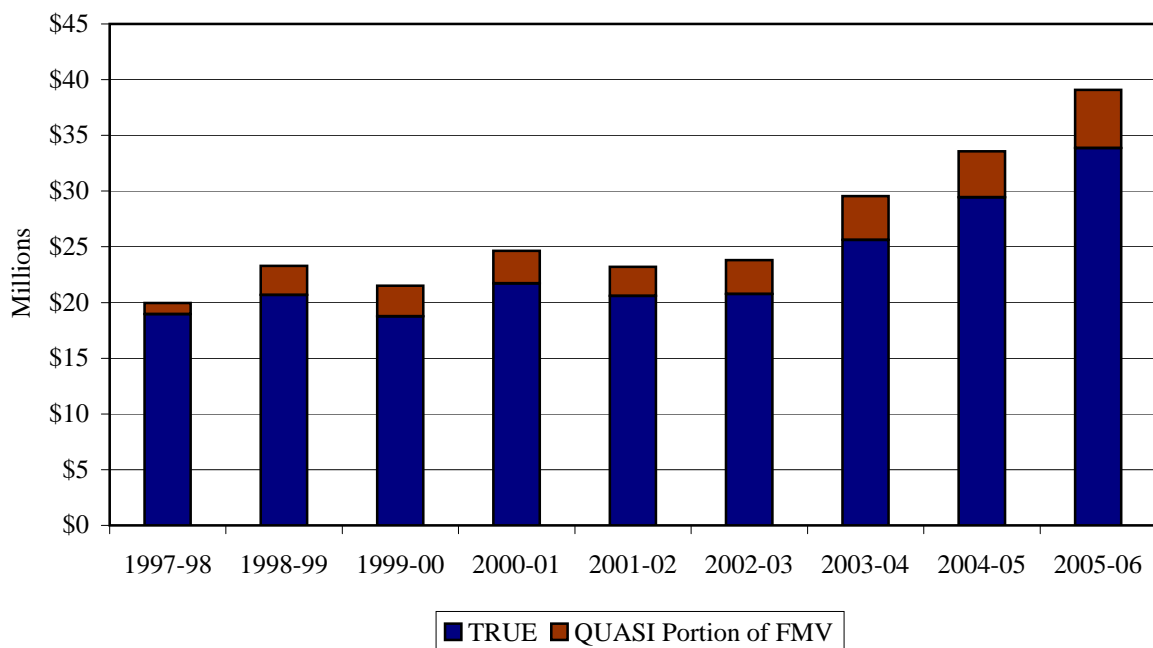
**FAIR MARKET VALUE OF ENDOWMENTS,
FISCAL YEARS 1996-97 - 2005-06**

YEAR	TRUE	QUASI	TOTAL
1996-97	\$ 15,825,307	-	\$ 15,825,307
1997-98	18,962,751	\$ 1,000,000	19,962,751
1998-99	20,684,620	2,600,000	23,284,620
1999-00	18,759,461	2,759,613	21,519,074
2000-01	21,703,091	2,937,851	24,640,942
2001-02	20,583,839	2,616,989	23,200,828
2002-03	20,774,939	3,036,206	23,811,145
2003-04	25,633,806	3,927,881	29,561,687
2004-05	29,445,227	4,136,062	33,581,289
2005-06	33,860,441	5,212,932	39,073,373

SOURCE: James Madison University Foundation, Inc.

FIGURE 5-2

**FAIR MARKET VALUE OF ENDOWMENTS,
FISCAL YEARS 1997-98 - 2005-06**



SOURCE: James Madison University Foundation, Inc.