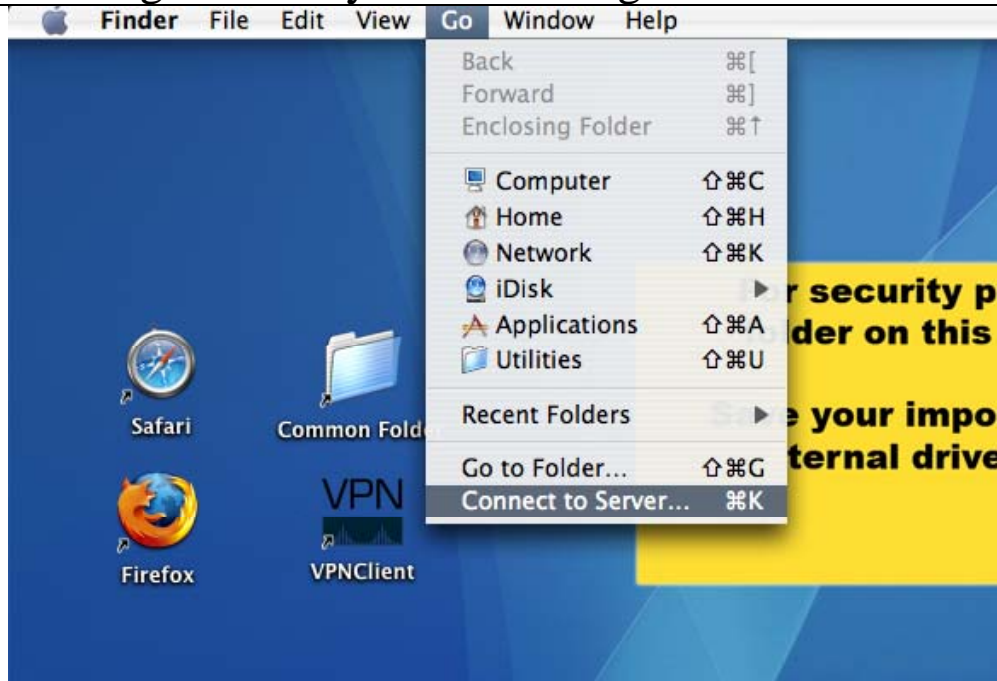
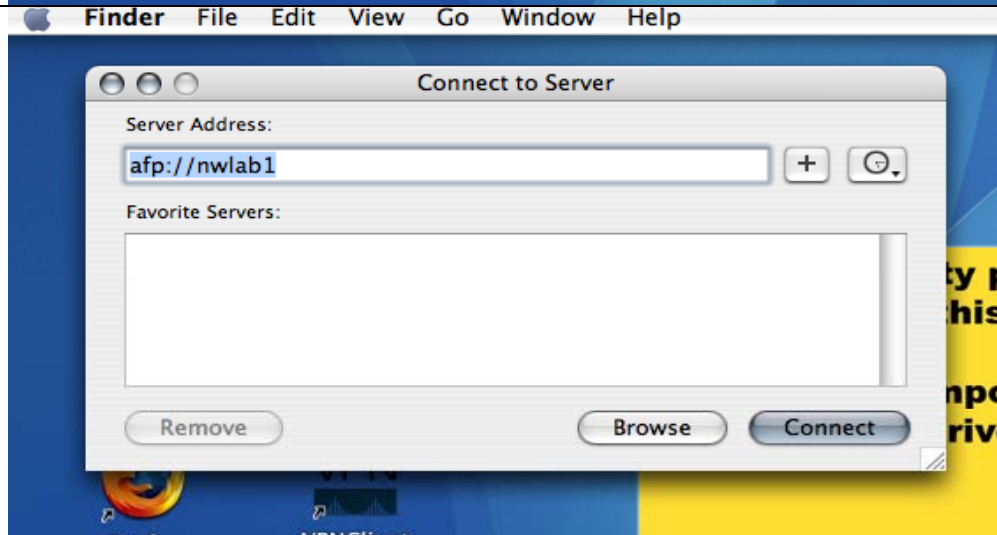


Connecting to Faculty Folders using Mac OSX:

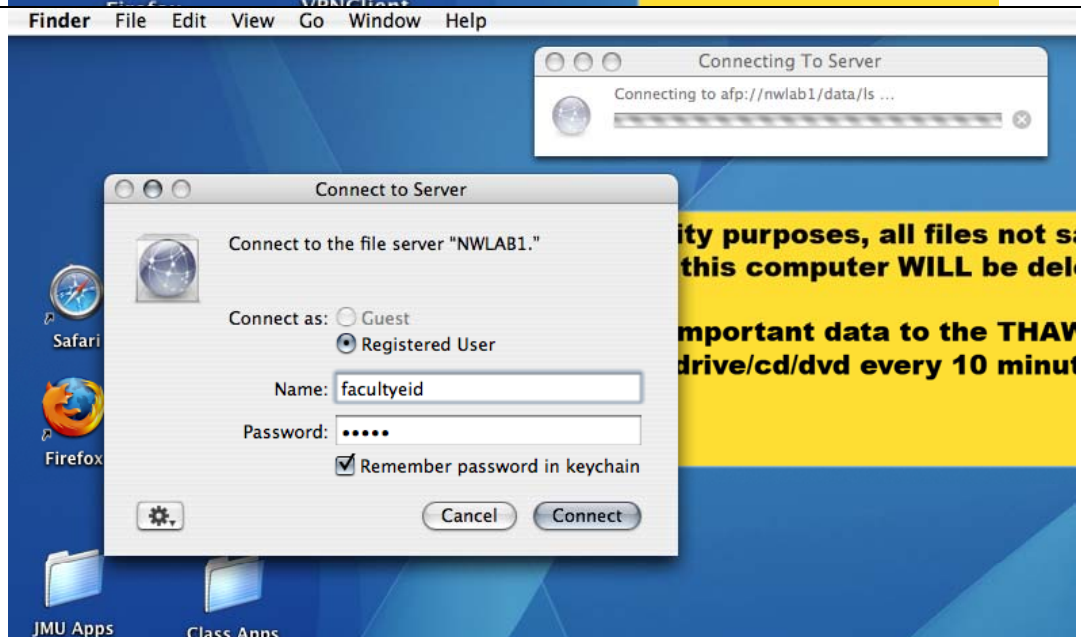
1. Click on the **Go** menu and select **Connect to Server**



2. When the Connect to Server window comes up, type **afp://nwlab1** into the **Server Address** bar as pictured and click **Connect**.

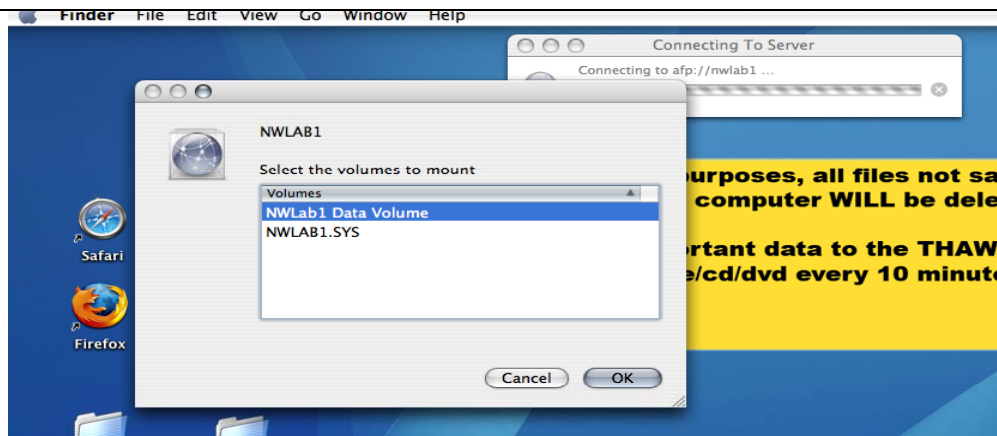


3. In the window that comes up, enter your Novell username and password in the **Name** and **Password** boxes. If you want to access the folder without having to manually login in the future, check the box next to **Remember password in keychain** and your machine will cache the password and use it automatically the next time you try to access the Faculty or TechPC folder.

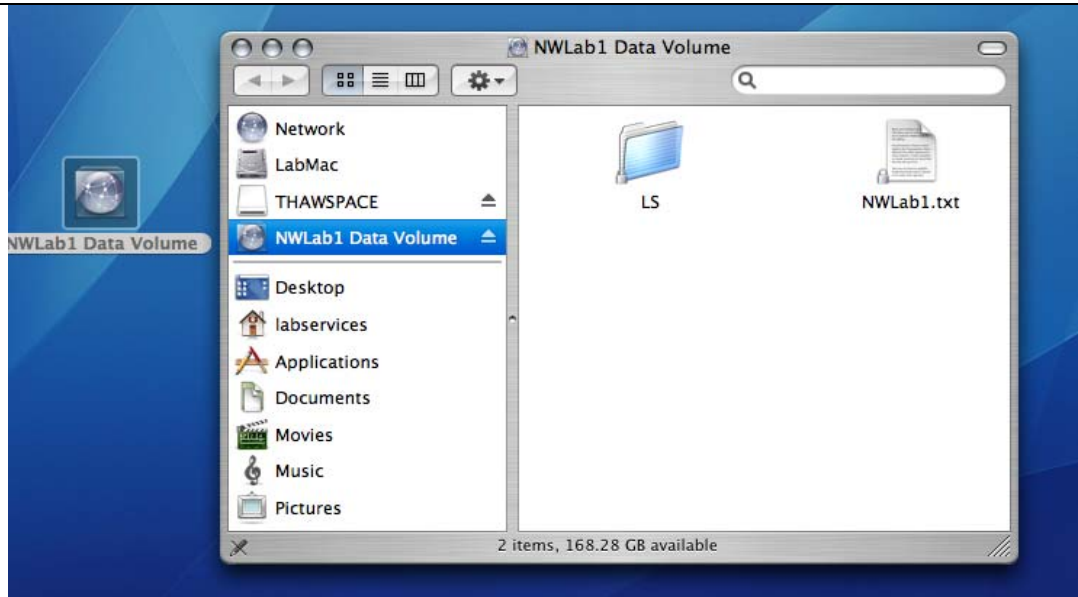


Connecting to Faculty Folders using Mac OSX:

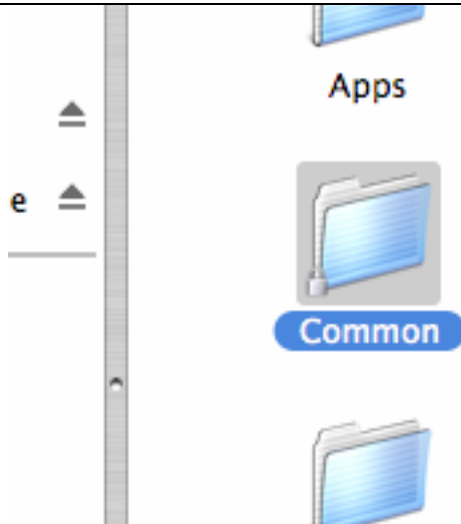
4. In the next window, select **NWLab1 Data Volume** and click **OK**.



5. You should now see the NWLab1 Data Volume mounted on the desktop, and a window that shows the contents of the NWLab1 Data Volume should be open. If not, simply double click on the NWLab1 Data Volume and a window will open. Once that window is open, double click on the **LS** folder.



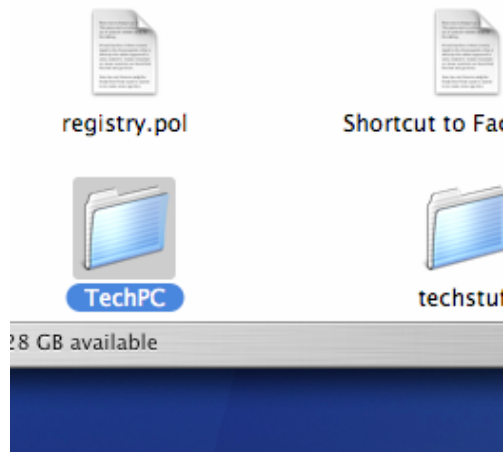
6. You should now see a sub folder named **Common**. Double click on **Common**.



Connecting to Faculty Folders using Mac OSX:

FOR TECHPC FOLDER

7. You should now see the **TechPC** folder. Double click on **TechPC** to open it, and inside the Faculty folder there should be a folder named according to your e-id. To make accessing your folder faster in the future, you can create an alias to it on your desktop. If you set your machine to store your username and password in the keychain, your machine will automatically login to NWLab1 when you double click the alias and you will have instant access to your TechPC folder.



FOR FACULTY FOLDERS

8. You should now see the **Faculty** folder. Double click on **Faculty** to open it, and inside the Faculty folder there should be a folder named according to your e-id. To make accessing your folder faster in the future, you can create an alias to it on your desktop. If you set your machine to store your username and password in the keychain, your machine will automatically login to NWLab1 when you double click the alias and you will have instant access to your Faculty folder.

