

JMU Wireless Network

Configuration for Ubuntu Linux 9.10 through 11.04 using the KDE Plasma Desktop

Screenshots in this guide were created with
Ubuntu 11.04 Desktop Edition (KDE 4.6.2).

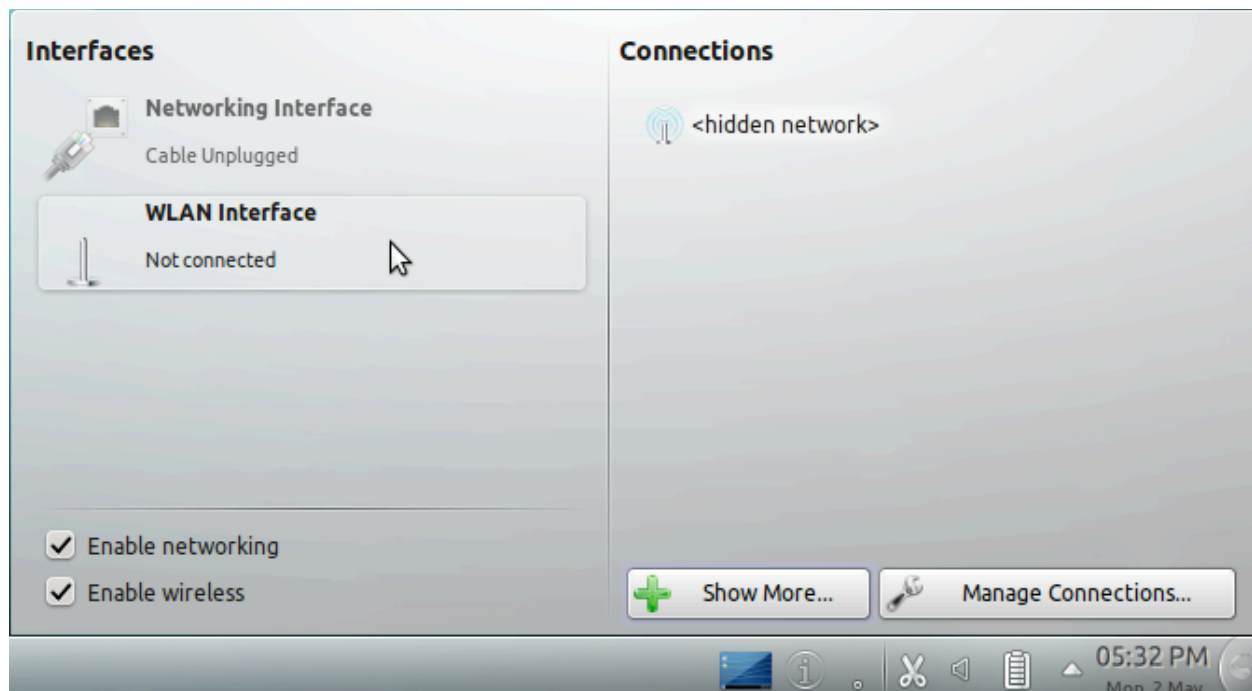
Kubuntu 9.04 users are encouraged to upgrade as
the Network Management widget contained a bug
that prevented it from joining WPA2-Enterprise networks.

This guide does not cover installing drivers or firmware for wireless network adapters.

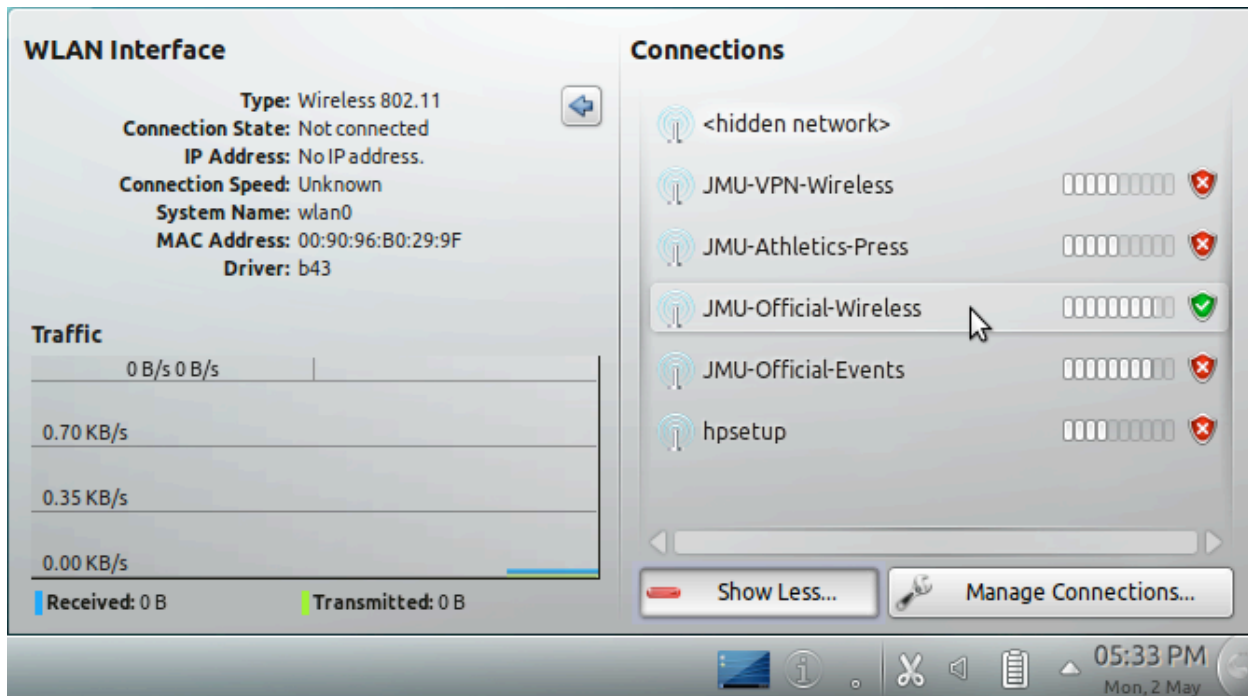
Please note that Linux is not supported by the Computing HelpDesk and
that this document is provided as a self-help reference only.

Connecting for the first time

To join the wireless network, first click on the **Network Management** icon (the small circle to the left of the clip board icon below) in the **System Tray** then click **WLAN Interface** from the resulting menu to see available wireless networks.



Click on **JMU-Official-Wireless** under **Connections** to begin connecting to the wireless network.



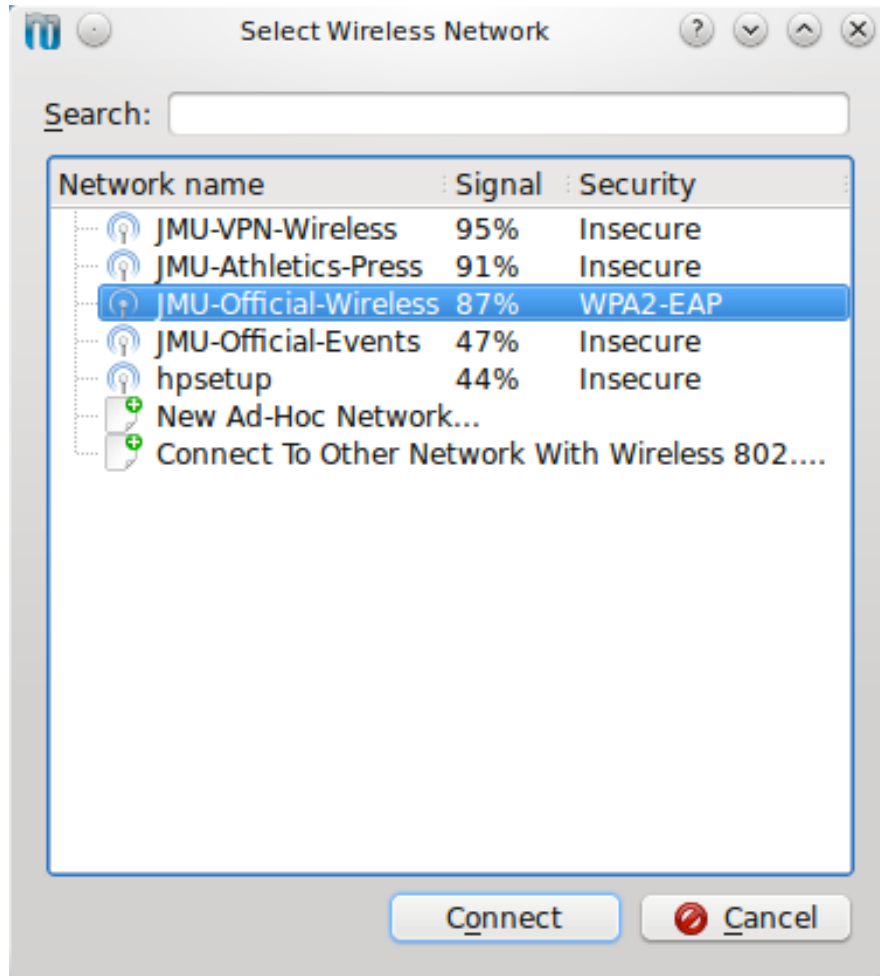
Ubuntu 9.10 and 10.04 users will need to click on the **Network Management** icon in the **System Tray** then click **Create network connection...** from the resulting menu.



Ubuntu 10.04 (KDE 4.4.2)

Ubuntu 9.10 and 10.04 users will need to click on **JMU-Official-Wireless** from the **Select Wireless Network** window. **JMU-Official-Wireless** will become highlighted when it is selected.

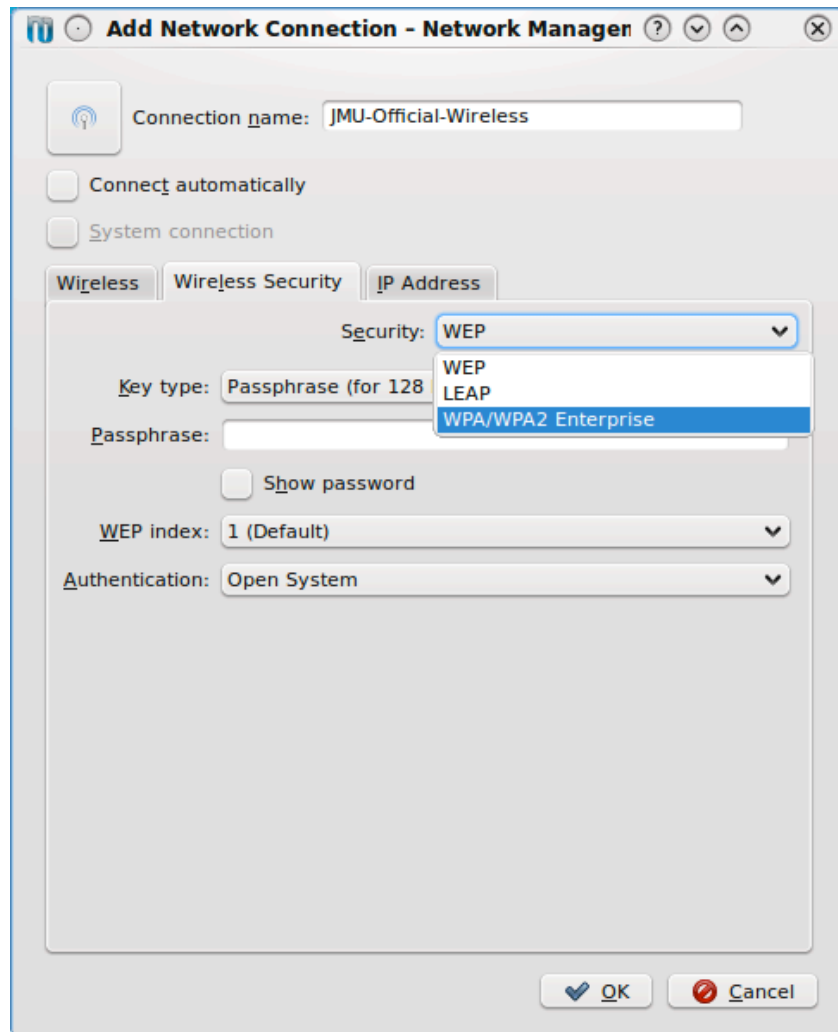
Afterward, click the **Connect** button below the list of networks.



Ubuntu 10.04 (KDE 4.4.2)

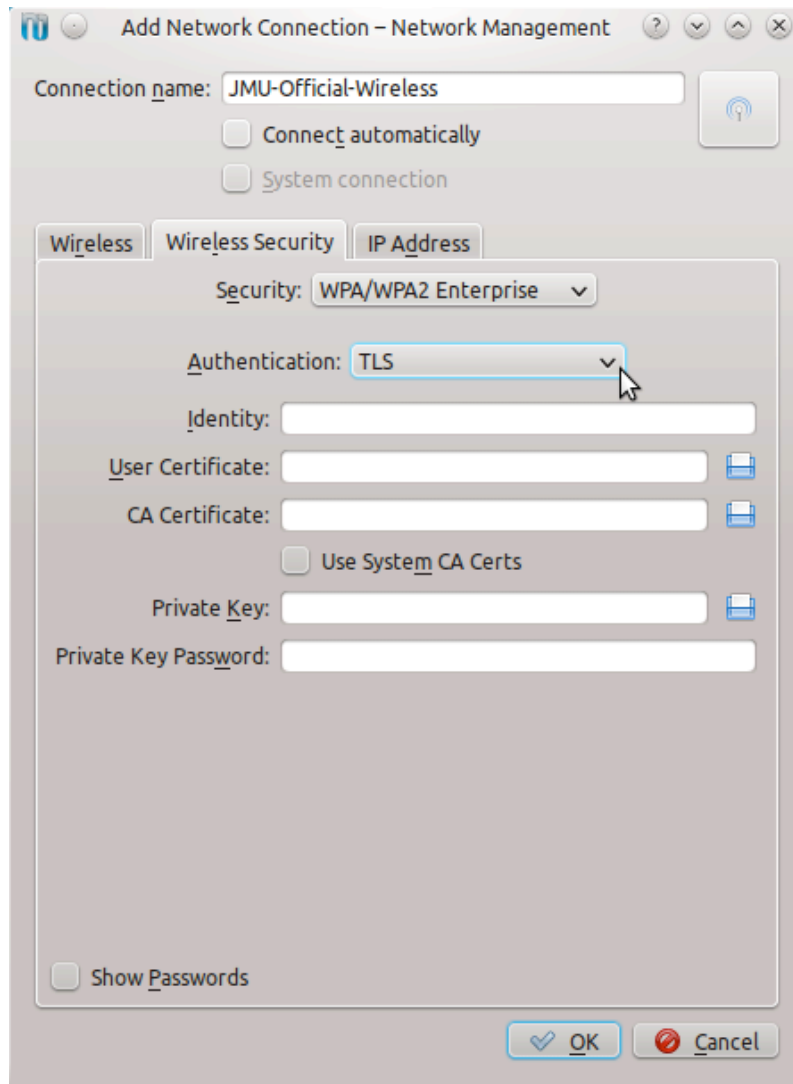
You will then be prompted to choose security settings for the network and enter your login credentials.

Ubuntu 9.10 users may need to specify the wireless network's security type. First click the drop-down list next to **Security**, then select **WPA/WPA2 Enterprise** from the drop-down list.

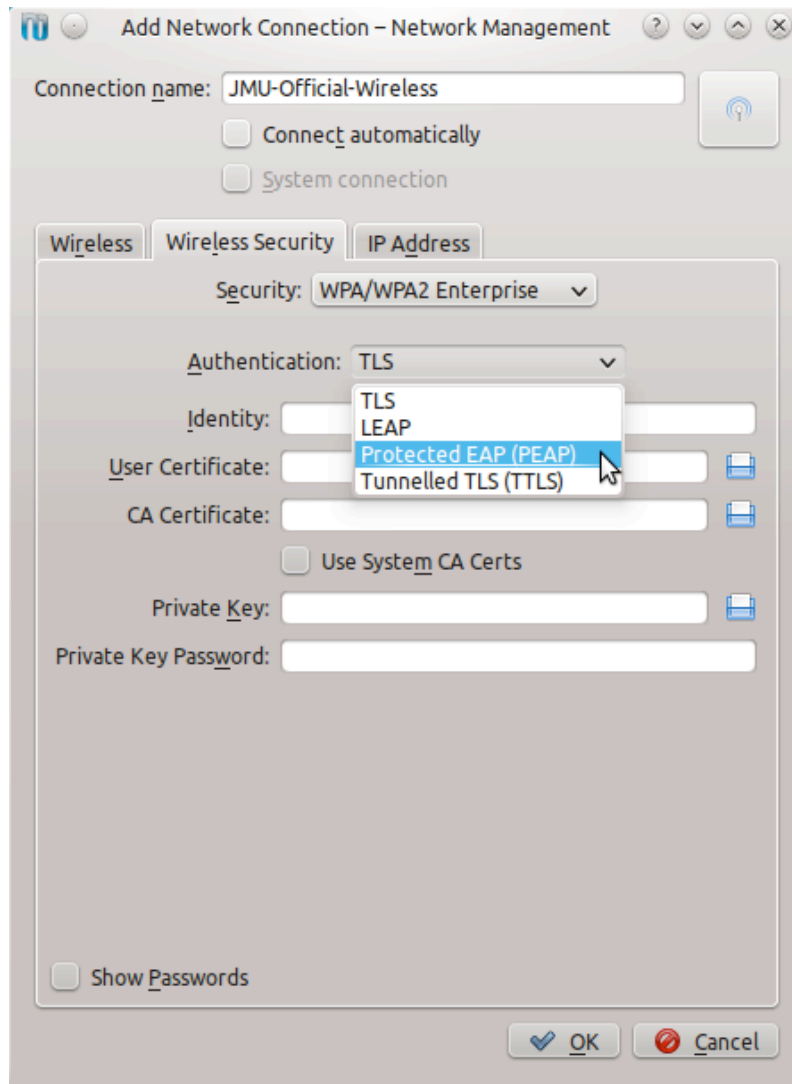


Ubuntu 9.10 (KDE 4.3.2)

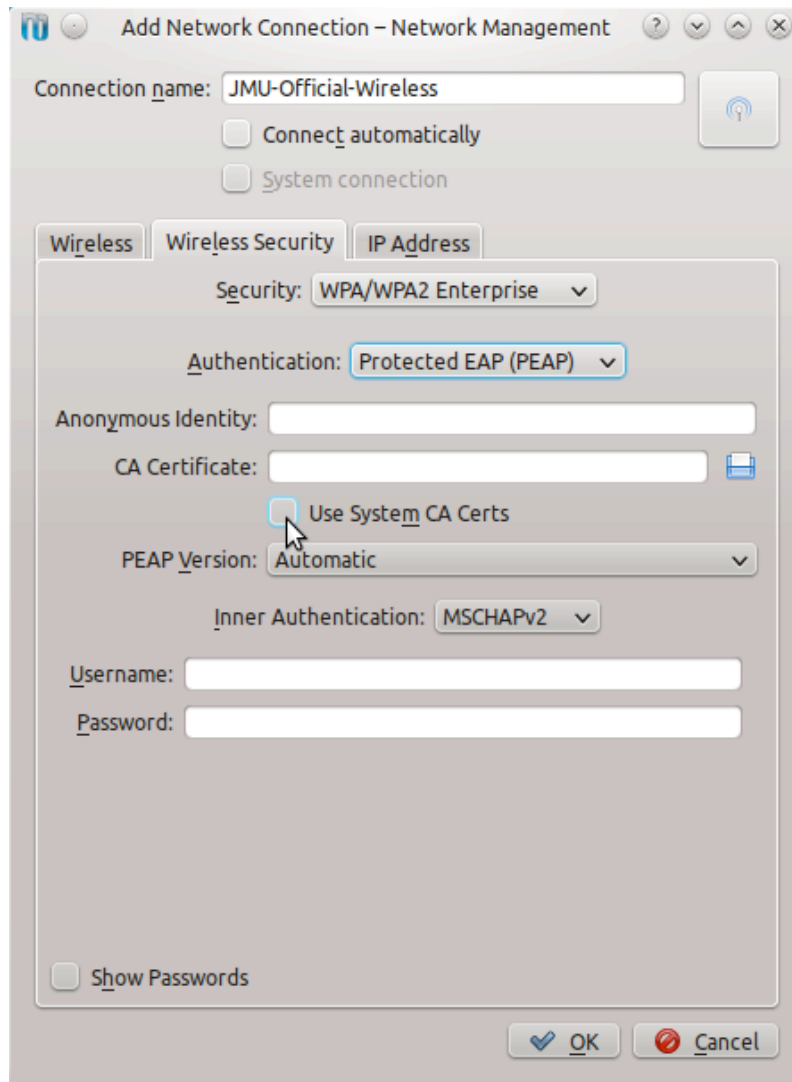
Click the drop-down list next to **Authentication**.



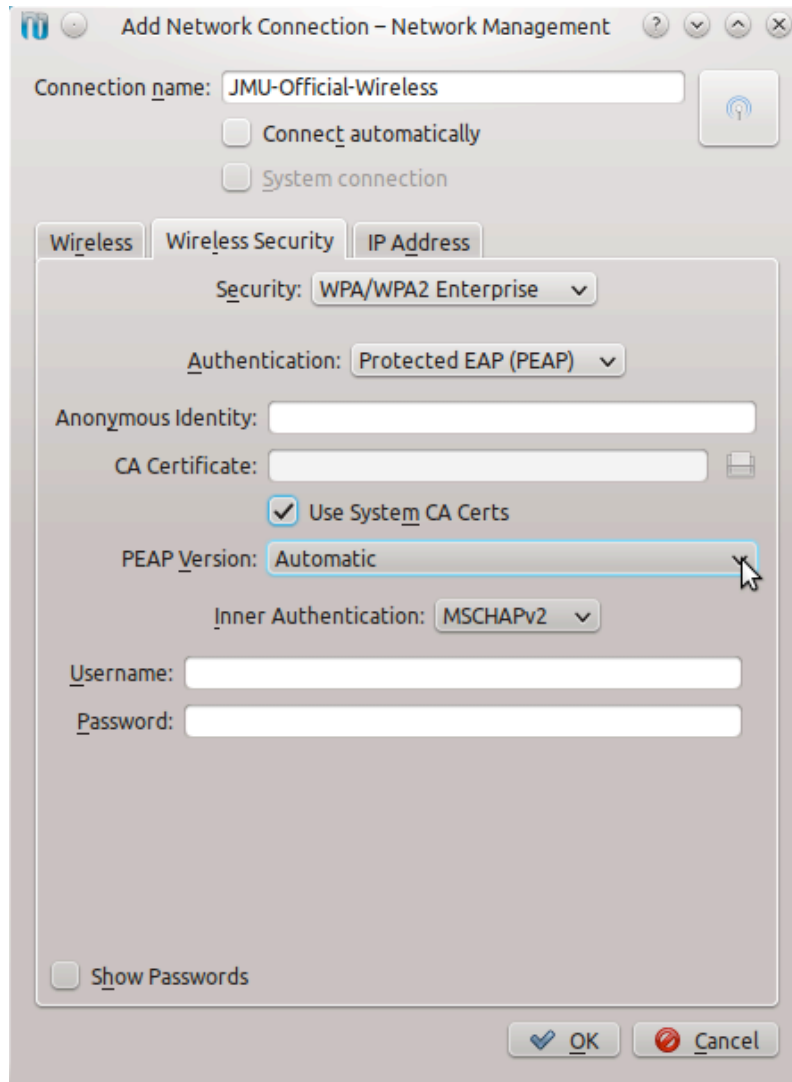
From the drop-down list, select **Protected EAP (PEAP)**.



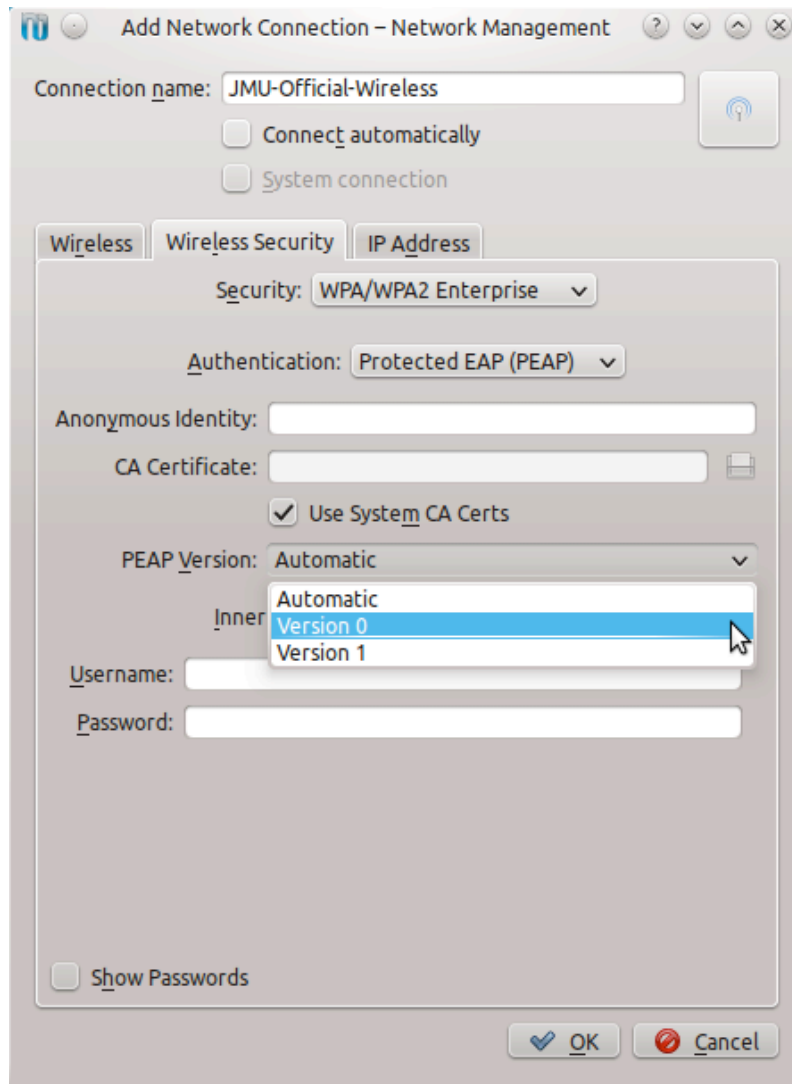
Then check the box next to **Use System CA Certs**.



Click the drop-down list next to **PEAP Version**.



From the drop-down list, select **Version 0**.



Enter your e-ID and password, then click **OK**.

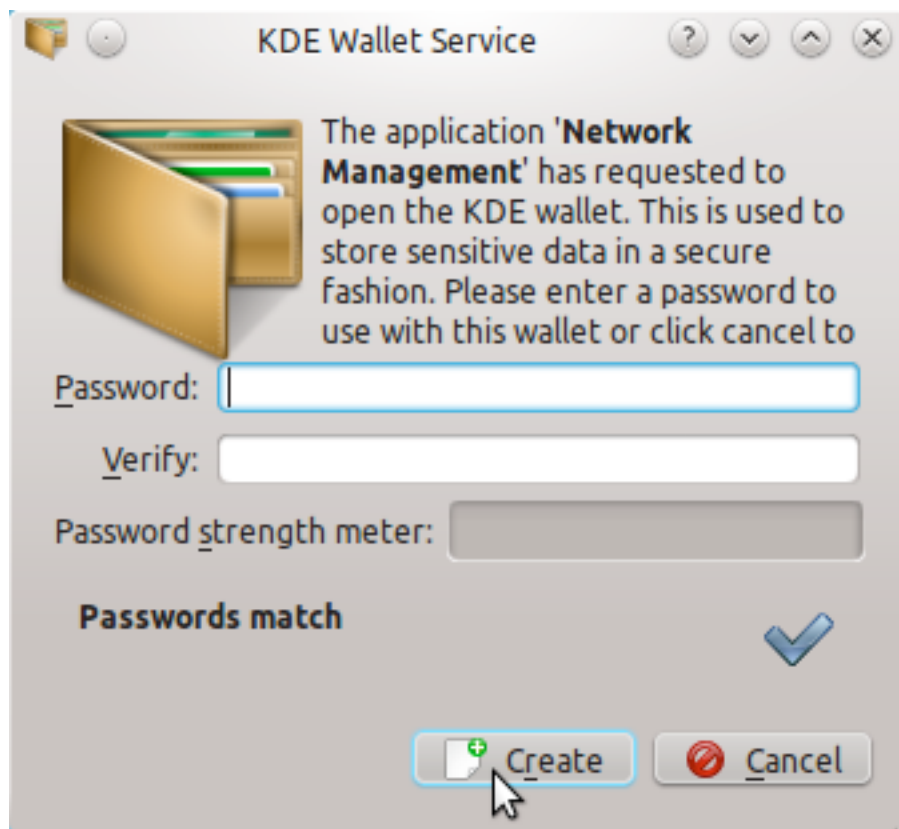
The image shows a window titled "Add Network Connection - Network Management". The "Connection name" field contains "JMU-Official-Wireless". There are checkboxes for "Connect automatically" and "System connection", both of which are unchecked. The "Wireless Security" tab is selected, showing the following settings:

- Security: WPA/WPA2 Enterprise
- Authentication: Protected EAP (PEAP)
- Anonymous Identity: (empty field)
- CA Certificate: (empty field with a file icon)
- Use System CA Certs: (checked)
- PEAP Version: Version 0
- Inner Authentication: MSCHAPv2
- Username: (empty field)
- Password: (empty field)

At the bottom left, there is a checkbox for "Show Passwords" which is unchecked. At the bottom right, there are "OK" and "Cancel" buttons. A mouse cursor is pointing at the "OK" button.

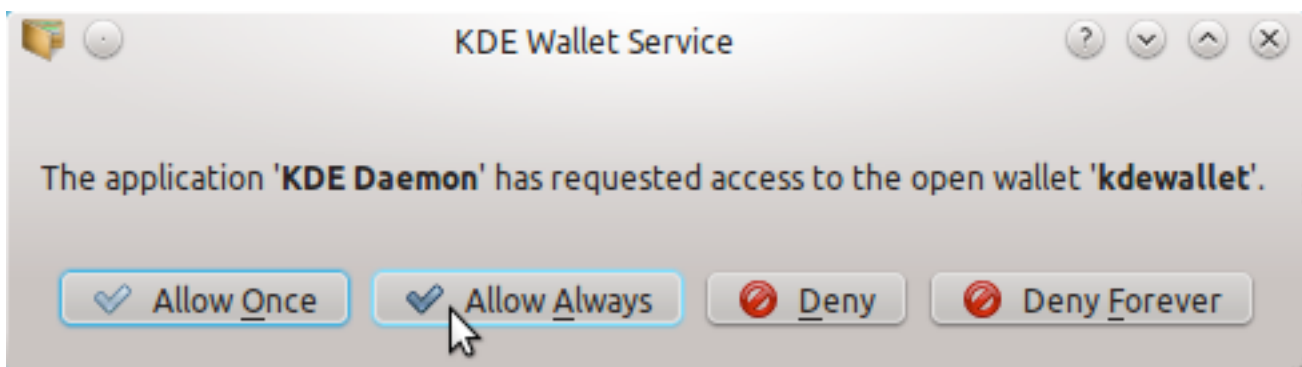
If you have not previously saved passwords in the **KDE Wallet** you may be prompted to set a password for the wallet. Enter a password of your choosing and click **Create**.

Users who have previously used the **KDE Wallet** will not be prompted for this.

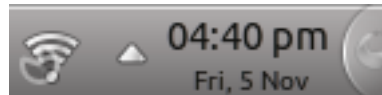


Network Management will need access to your **KDE Wallet** to store your wireless network password.

Click **Allow Once** or **Allow Always** to continue.



It may take several seconds for your computer to acquire an IP address, during which time the **Network Management** icon will change to look like the one below to the far left (or between the volume control and battery gauge icons for Ubuntu 9.10 and 10.04 users).

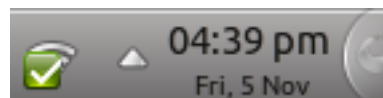


Ubuntu 10.10 (KDE 4.5.1)



Ubuntu 10.04 (KDE 4.4.2)

After connecting to the wireless network and getting an IP address, the **Network Manager** icon will change to look like the one below. The green check box (or blue bar for Ubuntu 9.10 and 10.04 users) will indicate that your computer has successfully connected to the wireless network and will disappear in a few seconds.



Ubuntu 10.10 (KDE 4.5.1)



Ubuntu 10.04 (KDE 4.4.2)

To verify your connection to the wireless network, hold the cursor over the **Network Management** icon in the **System Tray** without clicking.



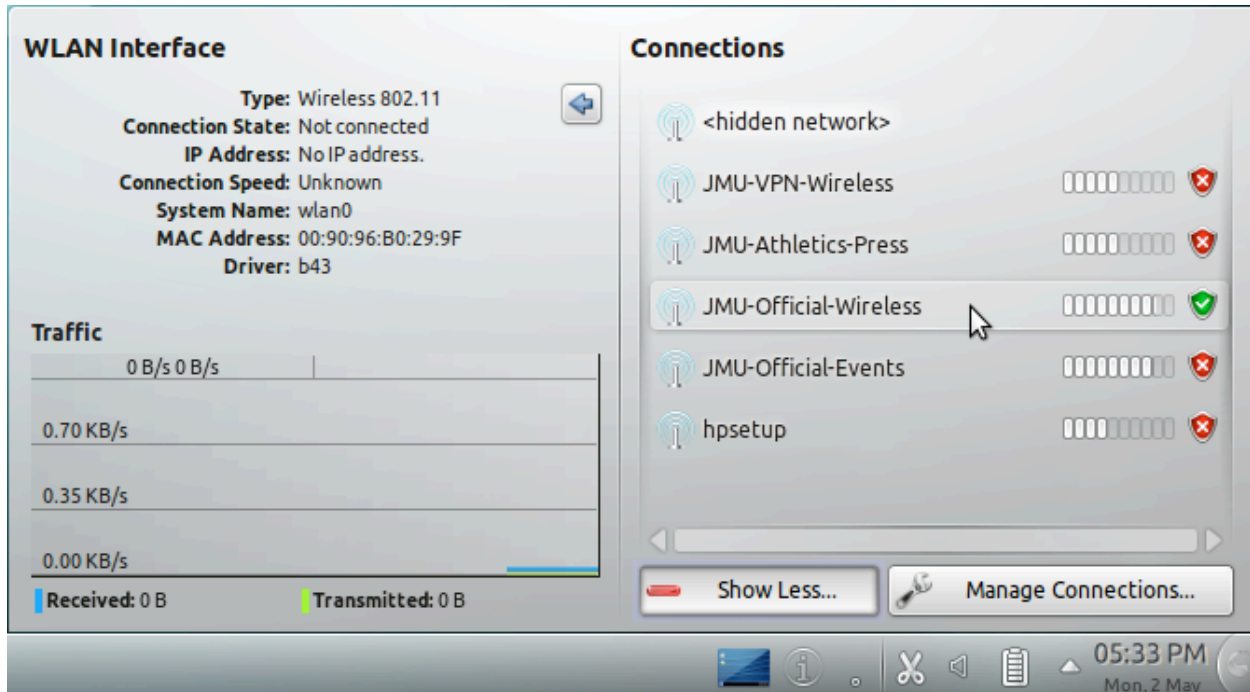
Ubuntu 9.10 and 10.04 users will need to click on the **Network Management** icon in the **System Tray**. **JMU-Official-Wireless** will be listed as **Active** with a blue bar indicating how strong the wireless signal is. This may vary depending on your location.



Ubuntu 10.04 (KDE 4.4.2)

Reconnecting (Ubuntu 10.10 and 11.04)

To reconnect to the wireless network, first click on the **Network Management** icon in the **System Tray** then click **JMU-Official-Wireless** from the resulting menu.



It may take several seconds for your computer to acquire an IP address, during which time the **Network Management** icon will change to look like the one below to the far left.



After connecting to the wireless network and getting an IP address, the **Network Manager** icon will change to look like the one below. The green check box indicate that your computer has successfully connected to the wireless network and will disappear in a few seconds.



Reconnecting (Ubuntu 9.10 and 10.04)

To reconnect to the wireless network, first click on the **Network Management** icon in the **System Tray** then click **JMU-Official-Wireless** from the resulting menu.



Ubuntu 10.04 (KDE 4.4.2)

It may take several seconds for your computer to acquire an IP address, during which time the **Network Management** icon will change to look like the one below to the right of the volume control.



Ubuntu 10.04 (KDE 4.4.2)

After successfully connecting to the wireless network and getting an IP address, the **Network Manager** icon will change to look like the one below. The blue bar reaching the top and arrow pointing to the right will indicate that the wireless network connection is ready for use.

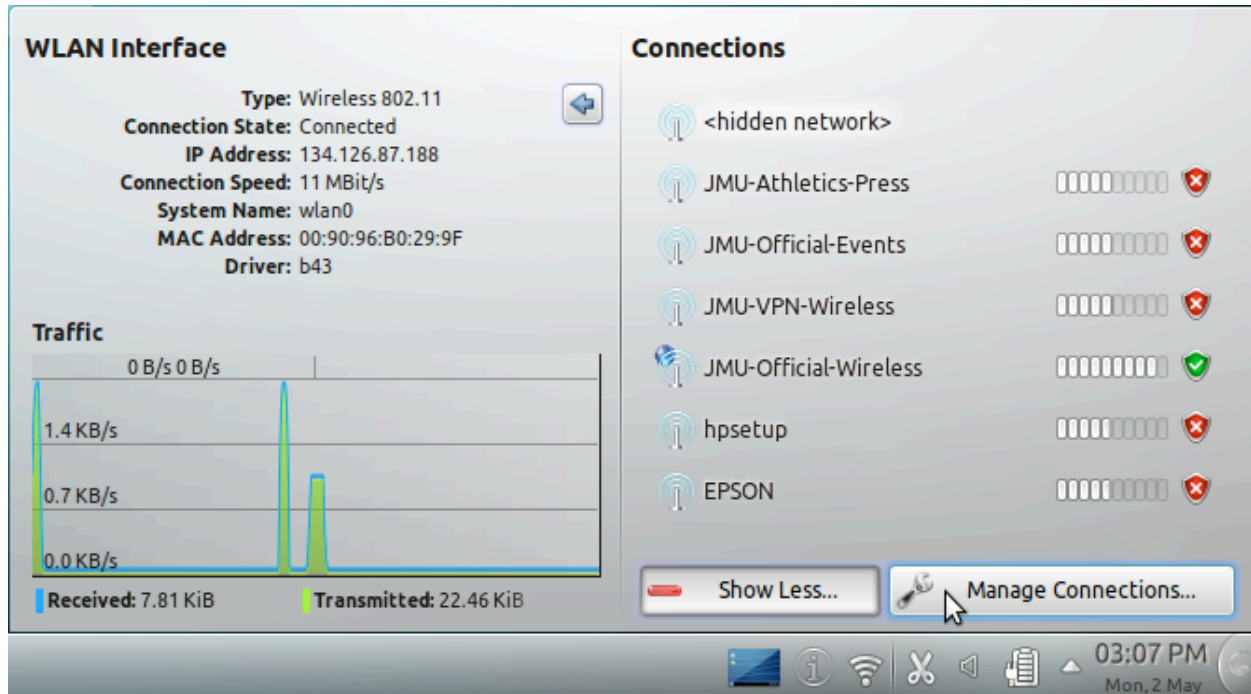


Ubuntu 10.04 (KDE 4.4.2)

Remove connection settings

Should you need to change the username used to log in to the wireless network or disconnect without connecting to another network, an easy way is to remove the network settings.

Click on the **Network Management** icon in the **System Tray** then click **Manage Connections...** from the resulting menu.

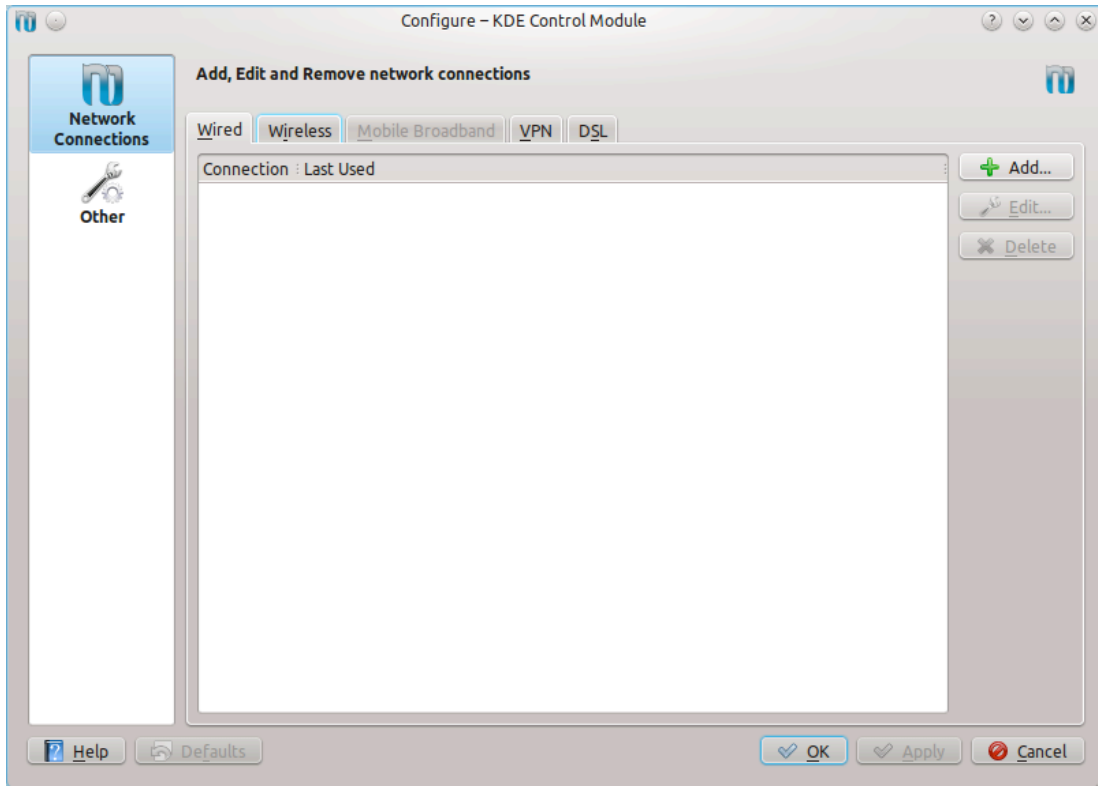


Ubuntu 9.10 and 10.04 users will need to click on the **Network Management** icon in the **System Tray** then click **Manage Connections...** from the resulting menu.



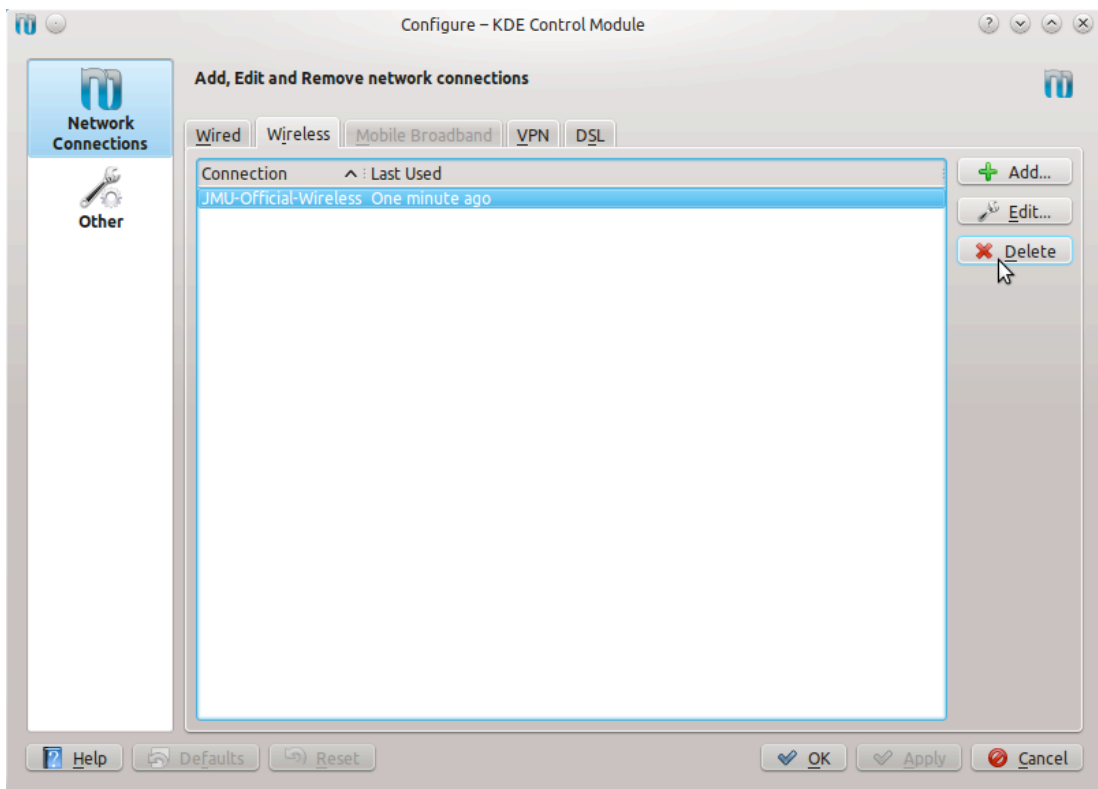
Ubuntu 10.04 (KDE 4.4.2)

In Ubuntu 10.10 and earlier, the **Network Connections** window will appear and have the **Wired** tab selected. Click on the **Wireless** tab.



Ubuntu 10.10 (KDE 4.5.1)

The **Wireless** tab will already be selected in Ubuntu 11.04. Select **JMU-Official-Wireless** and click the **Delete** button on the right.



A confirmation will be displayed to remove the network settings and stop automatically joining it. Click **Delete** to finish.

