

# JMU Wireless Network

## Configuration for Mac OS X 10.7 “Lion”

Screenshots in this guide were created with Mac OS X 10.7.0.

Please note that Mac OS X 10.7 is not yet supported by the Computing HelpDesk and that this document is provided as a self-help reference only.

### Connecting

To join the wireless network, first click on the **Wi-Fi Menu** in the **Menu Bar**.



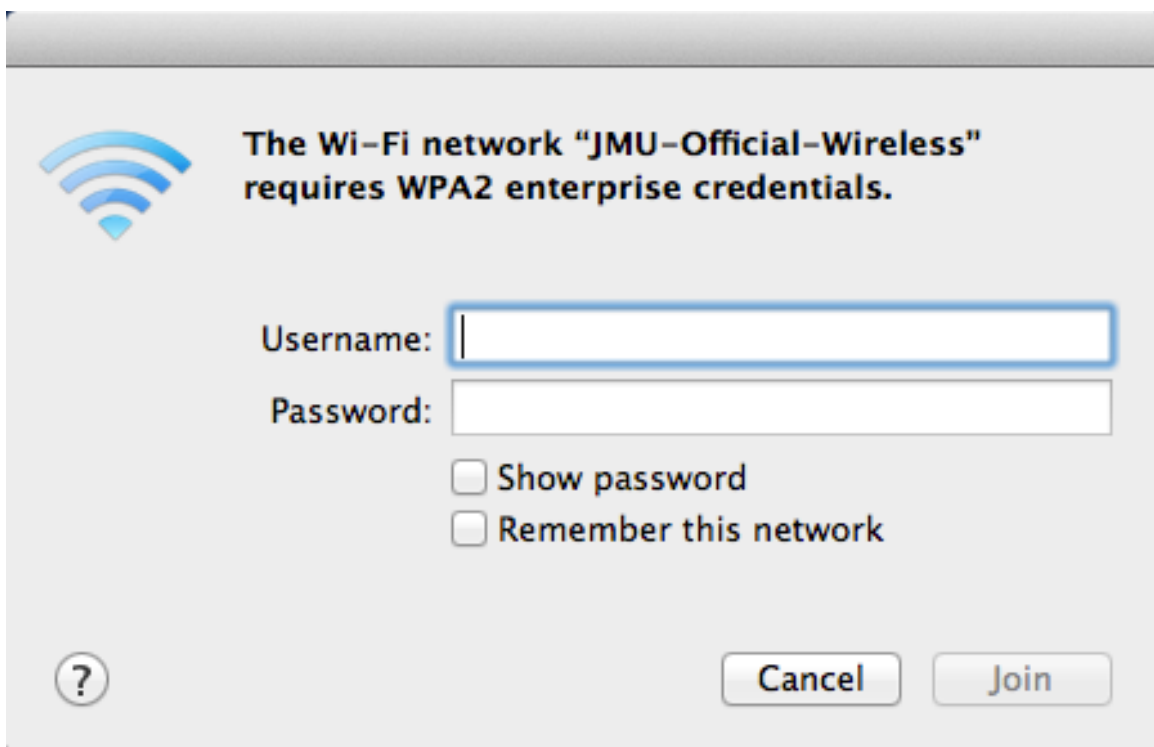
From the **Wi-Fi Menu**, select **JMU-Official-Wireless**.



You then will be prompted for your user name and password.

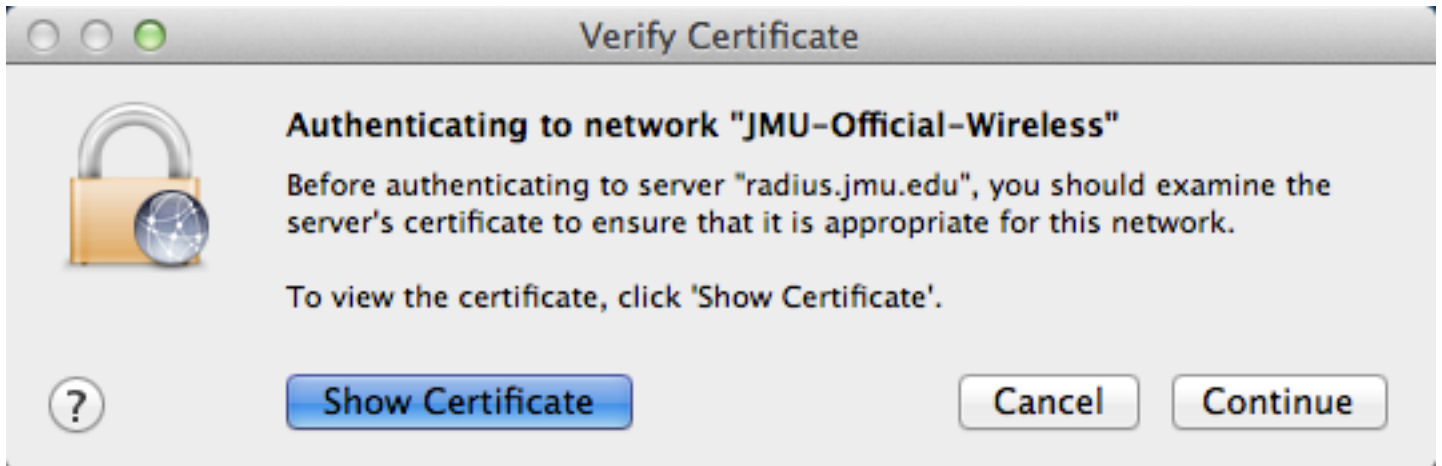
Enter your e-ID and password, then click on **OK**.

It is highly recommended that you uncheck the box next to **Remember this network** as it will cause Mac OS X to save your user name and password in a way that could cause it not to reconnect when your password changes.



Mac OS X will then prompt you to accept the authentication server's certificate to initiate encryption. This keeps your e-ID and password safe.

To accept the certificate permanently, click on **Show Certificate**.



The **Verify Certificate** window will then expand to show information about the certificate. The certificate will be for **radius.jmu.edu**, issued by **Thawte SSL CA**.

The box next to **Always trust "radius.jmu.edu"** should already be checked. Click **Continue**.



Mac OS X will then attempt to modify the certificate's trust settings in your login keychain and ask for your password.

To unlock your login keychain and trust the certificate, enter the username and password you use on your computer and then click **Update Settings**.

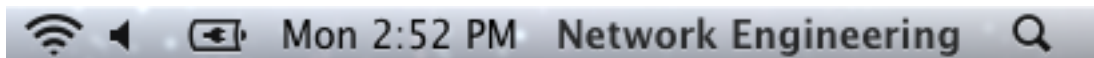
If you do not wish to do this, click **Cancel**. Your computer will continue connecting to the wireless network but you will be prompted to accept the certificate every time you connect in the future.



The **Wi-Fi Menu** icon will change to animated mix of gray and black lines while your computer connects to the wireless network and acquires an IP address. This may take several seconds.



After successfully connecting, the **Wi-Fi Menu** icon will no longer be animated, with black lines indicating how strong the wireless signal is. This may vary depending on your location.



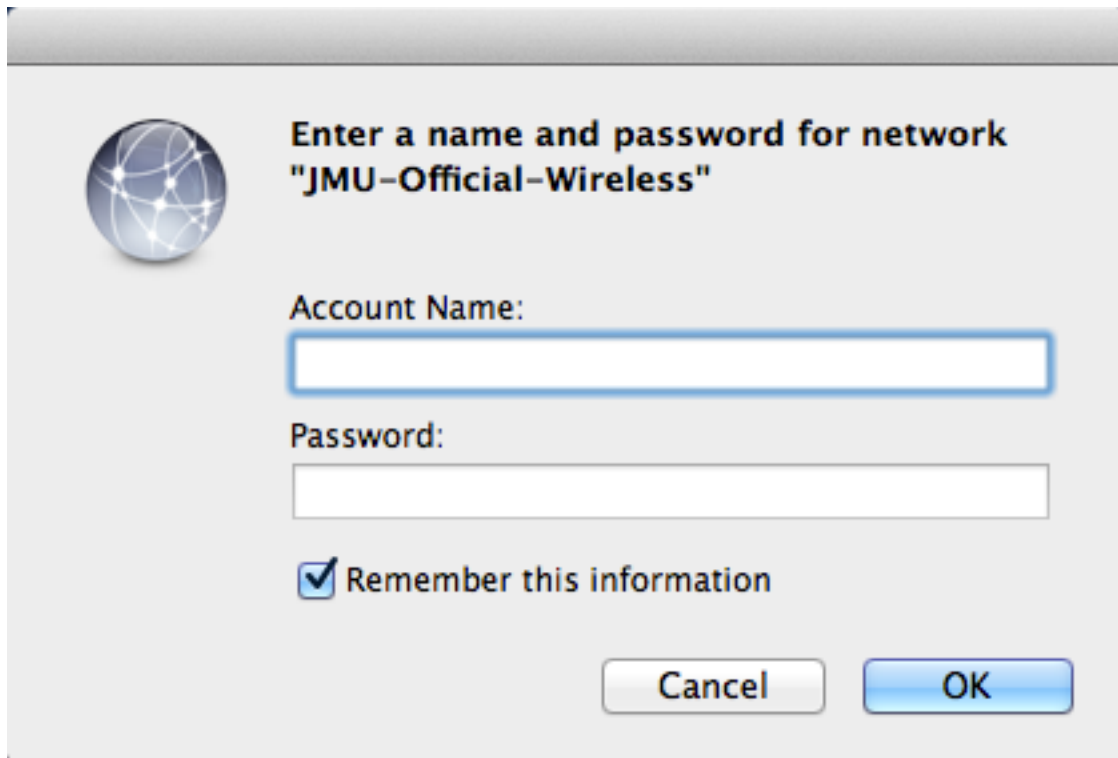
To verify your connection to the wireless network, click on the **Wi-Fi Menu** and see that **JMU-Official-Wireless** is checked.



## Reconnecting

If your Mac has previously connected to the **JMU-Official-Wireless** network, it may automatically attempt to join it again after waking from sleep or logging back in. In this case, you will see the following login window.

Enter your e-ID and password, then click on **OK**.



The image shows a Mac OS network login dialog box. On the left is a globe icon with network lines. The title is "Enter a name and password for network 'JMU-Official-Wireless'". Below the title are two text input fields: "Account Name:" and "Password:". Below the password field is a checked checkbox labeled "Remember this information". At the bottom right are two buttons: "Cancel" and "OK".

**Enter a name and password for network "JMU-Official-Wireless"**

Account Name:

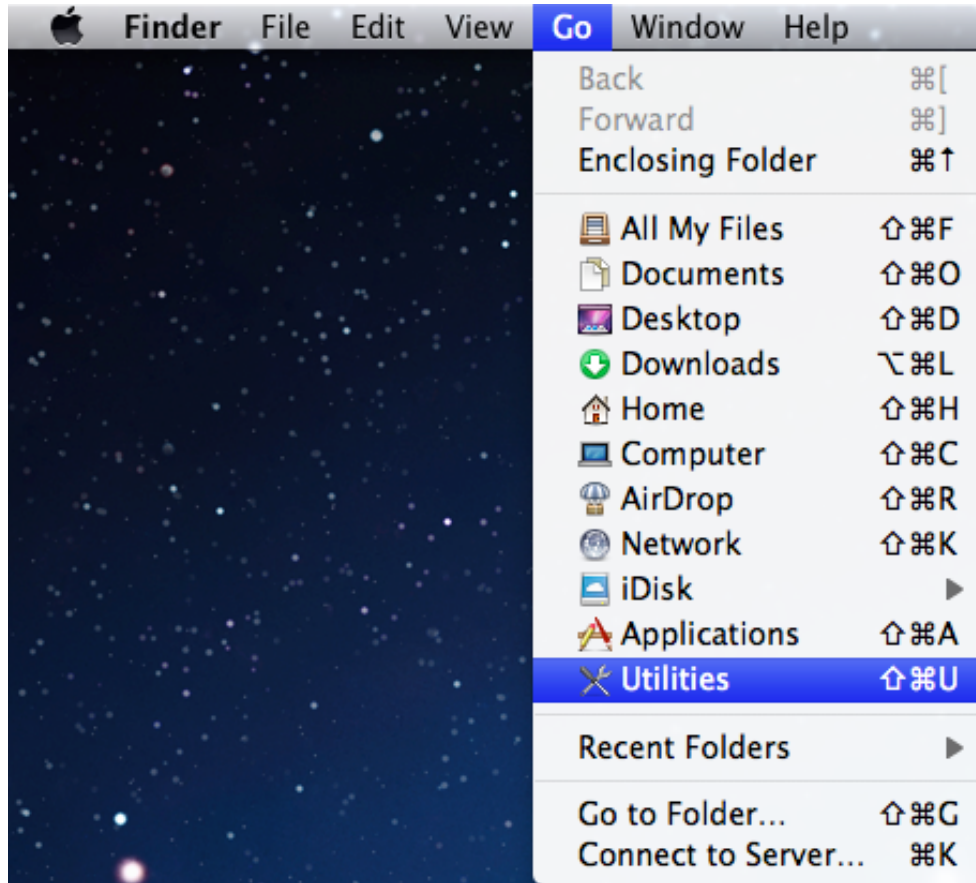
Password:

Remember this information

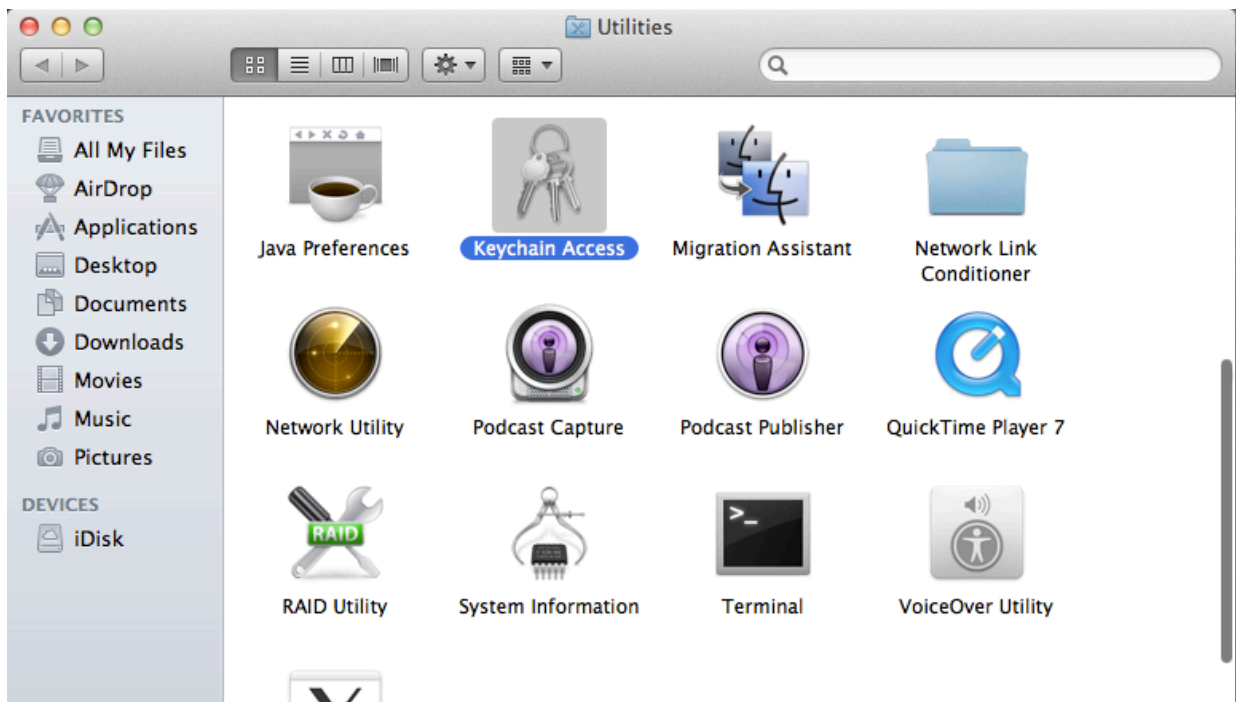
Cancel OK



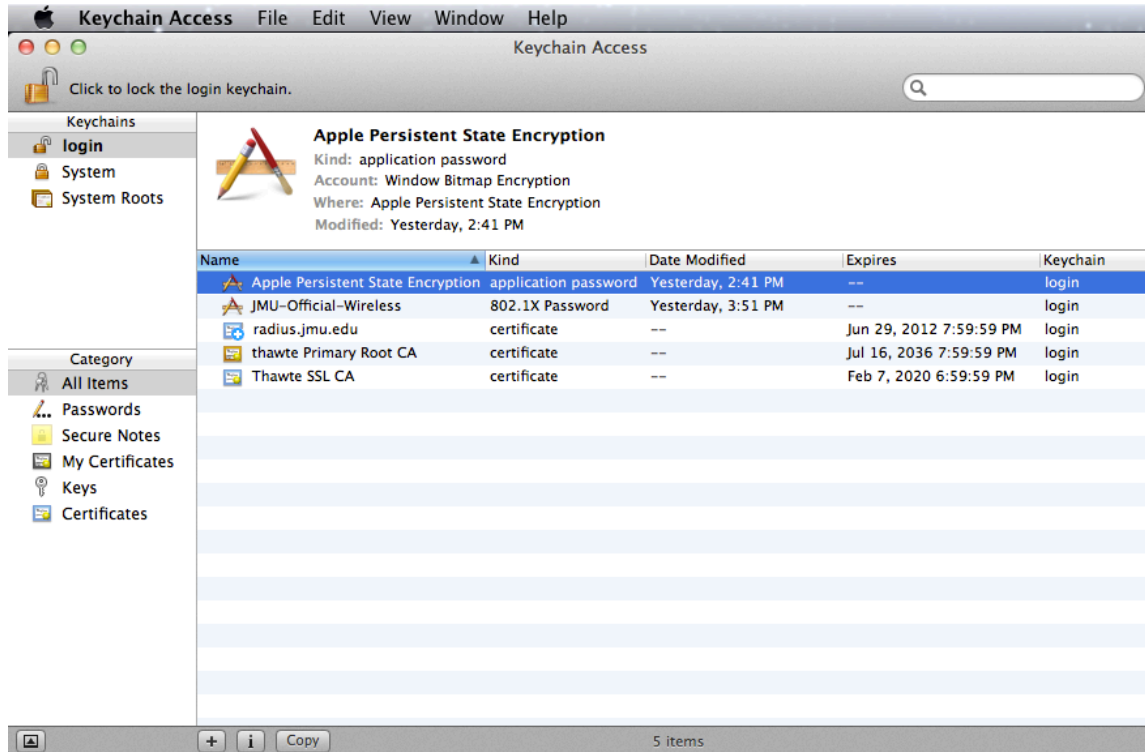
Click **Utilities** from the **Go** menu.



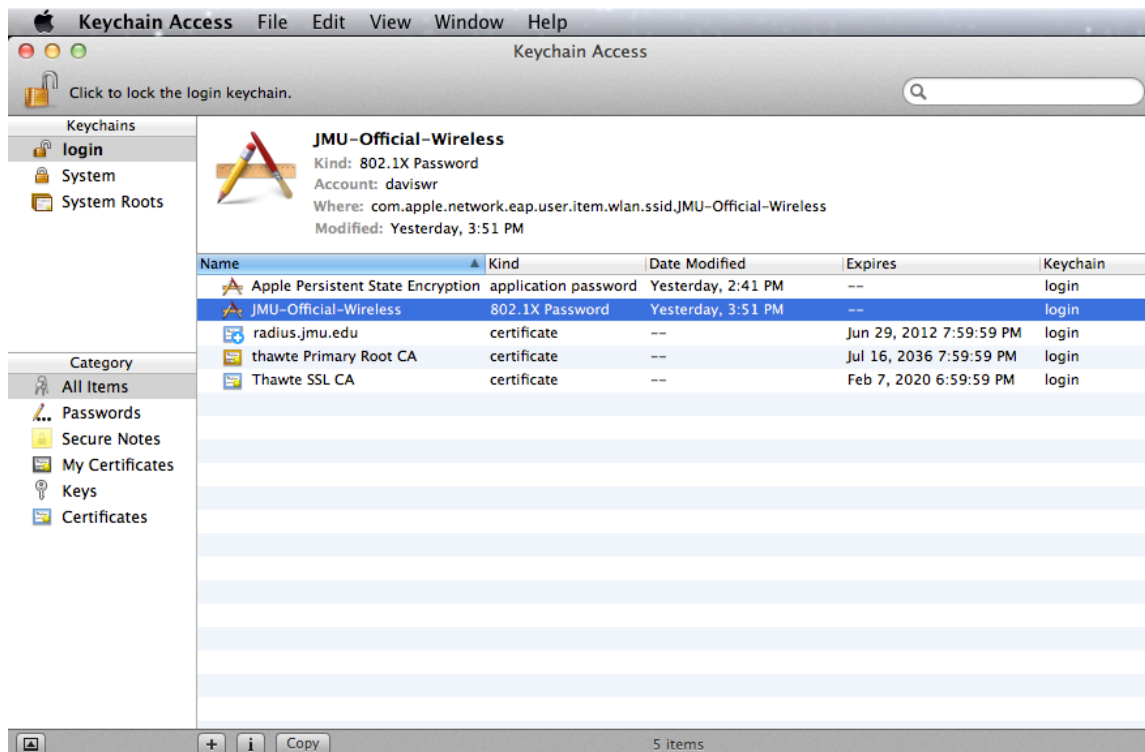
This will display the **Utilities** folder. Double-click on the **Keychain Access** icon.



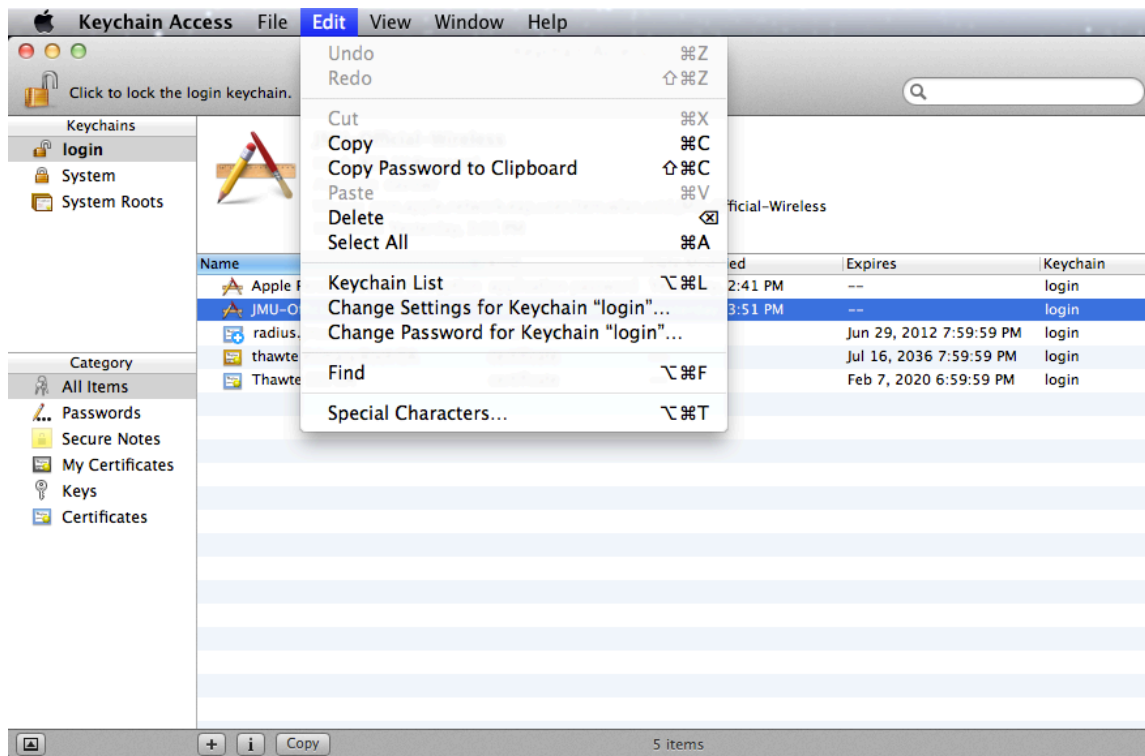
This will launch the **Keychain Access** application.



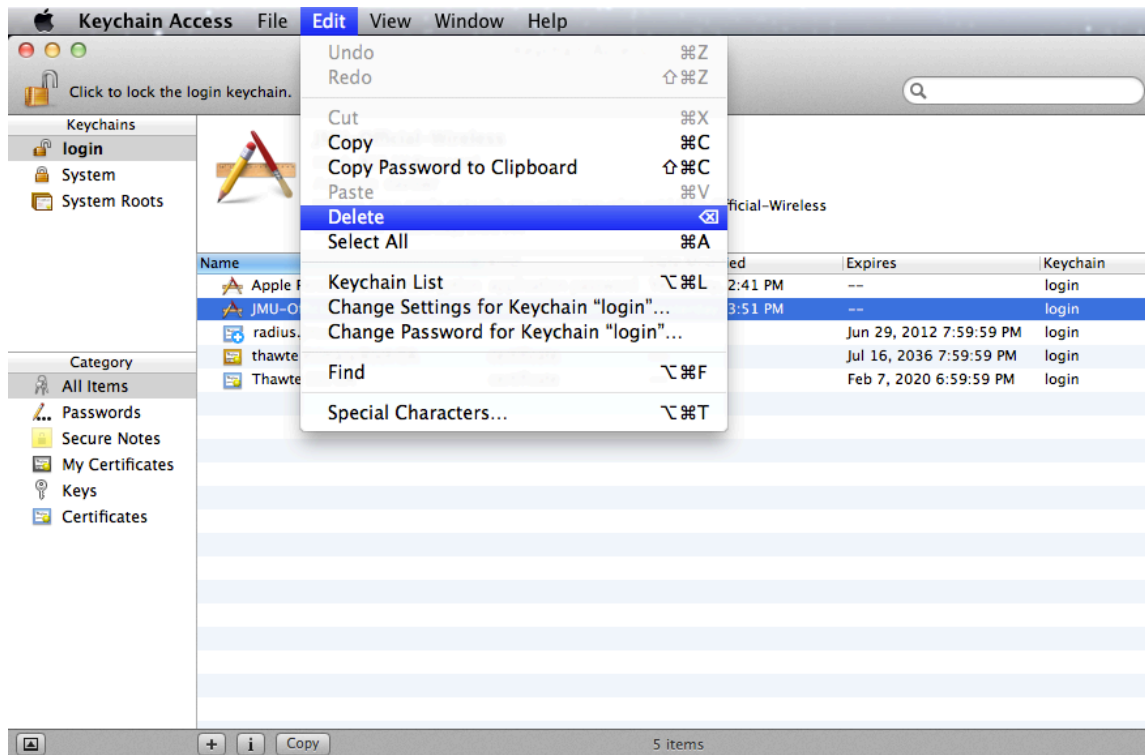
Make sure the **login Keychain** is selected on the far left and click on the row starting with **JMU-Official-Wireless**.



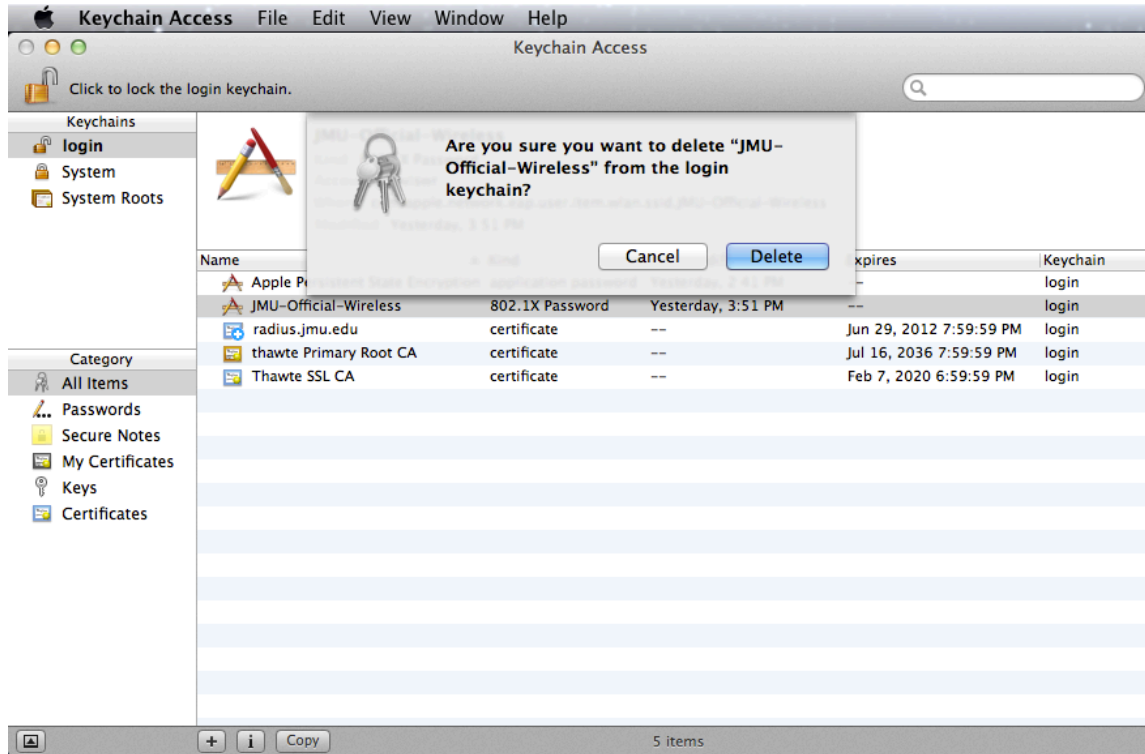
Click the **Edit** menu in the **Menu Bar**.



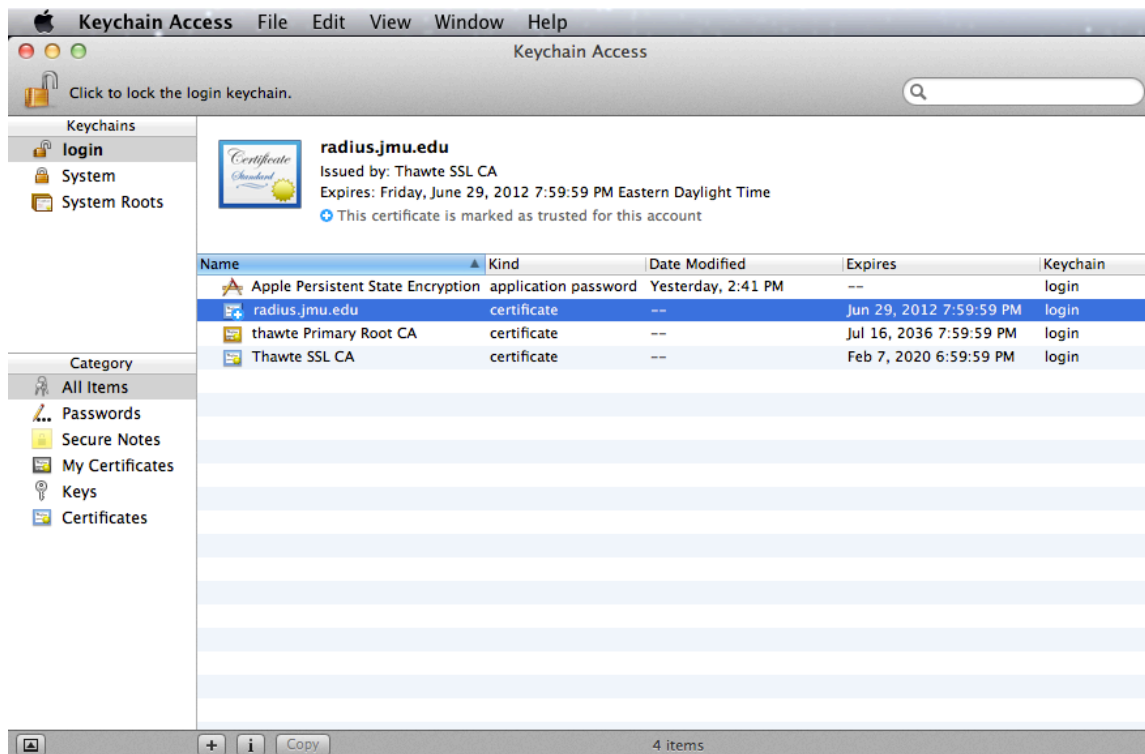
Click **Delete** from the **Edit** menu.



You will be prompted to confirm deletion of the **JMU-Official-Wireless** password. Click the **Delete** button to continue.



Your saved password will now be cleared.



You may now close **Keychain Access** and attempt to connect to the wireless network.