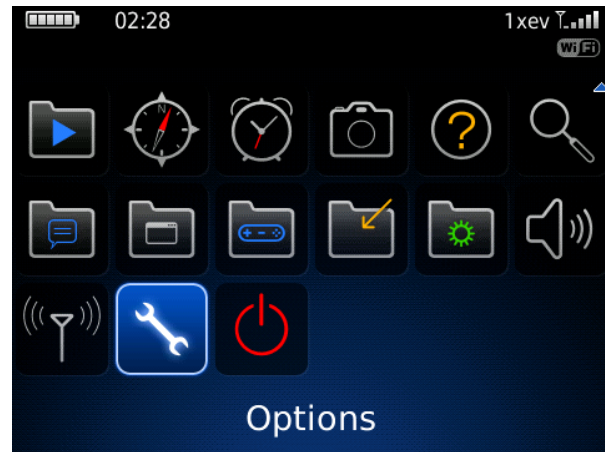


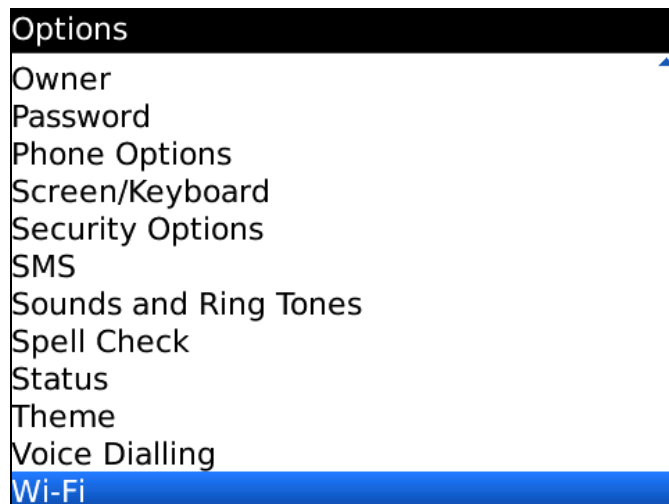
## JMU Wireless Network

### Configuration for BlackBerry Smartphones (OS 5)

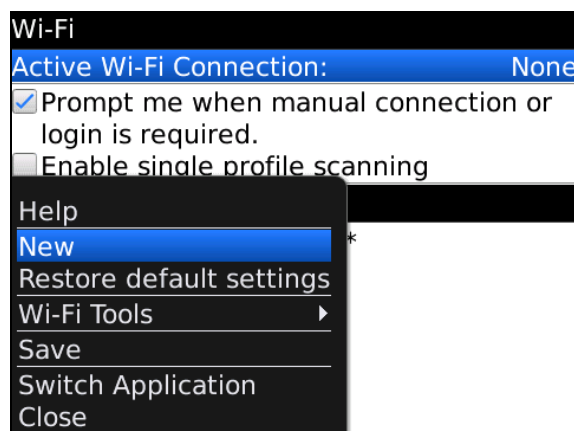
1. While on the BlackBerry home screen, press the **BlackBerry menu button**
2. Scroll down to the icon labeled **options**.



3. Scroll to the bottom of the list and select **Wi-Fi**.



4. Click the **BlackBerry menu button** and select **New**.



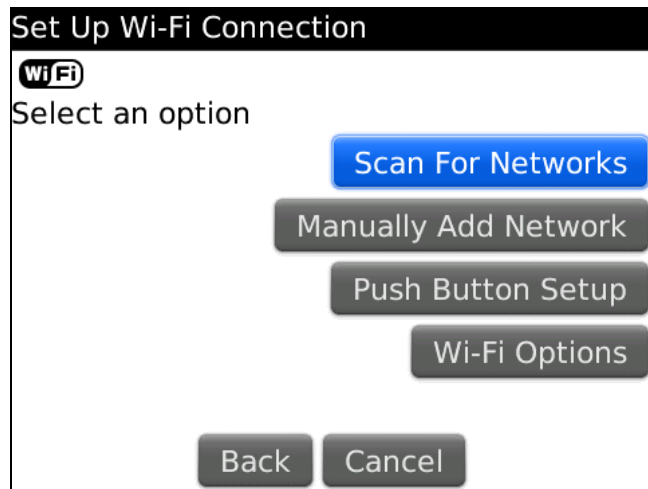
## JMU Wireless Network

### Configuration for BlackBerry Smartphones (OS 5)

5. On the Set Up Wi-Fi screen, read the setup information then click **Next**.

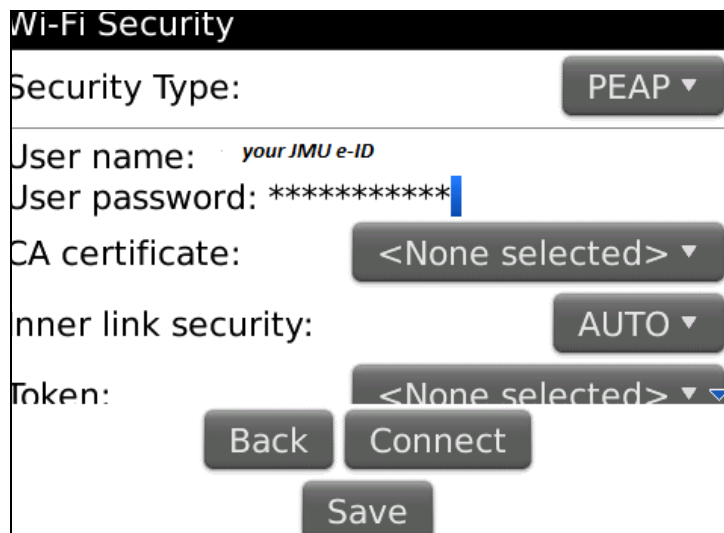


6. Select **Scan for Networks**.



7. Select **JMU-Official-Wireless**

8. On the Wi-Fi Security screen, enter your **JMU e-ID** and password in the fields **User name** and **User Password**.

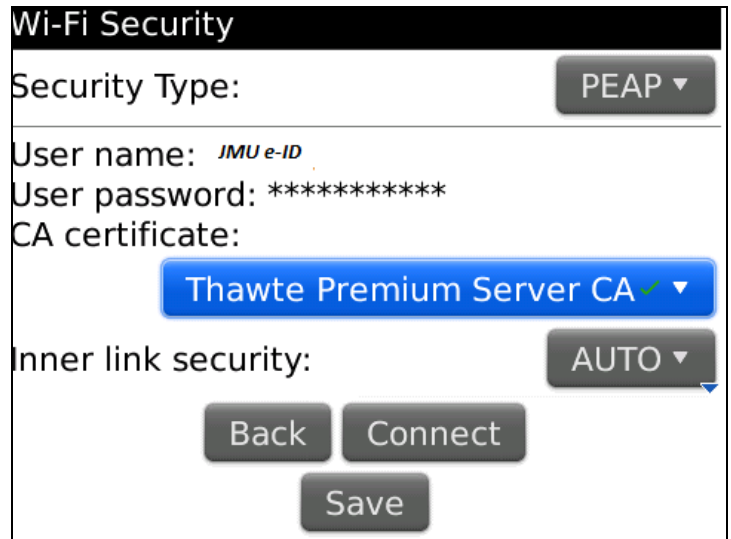


## JMU Wireless Network

### Configuration for BlackBerry Smartphones (OS 5)

- Click the drop-down menu for **CA certificate** and select **Thawte Premium Server CA**.

Select **Connect**.

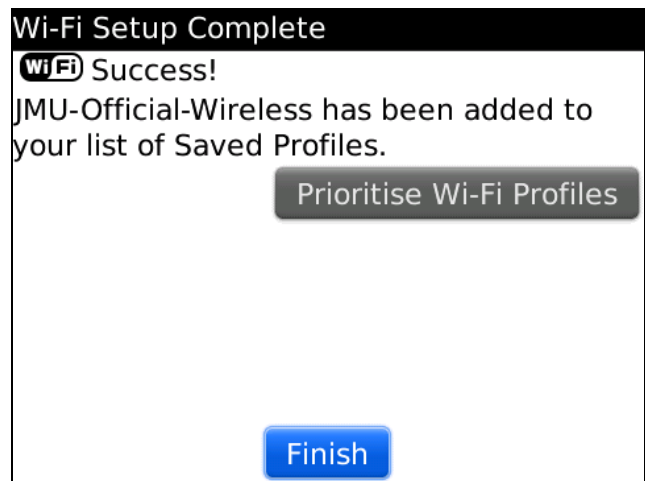


- Make sure **Yes** is selected for **Save this Wi-Fi Network as a Profile?**

- Click **Next**.

- On the Wi-Fi Setup Complete screen, you will receive a message noting: "WiFi Success! JMU-Official-Wireless has been added to your list of Saved Profiles."

Click **Finish**



- When you have successfully connected to the JMU-Official-Wireless network, you will notice that the **Wi-Fi icon** will be lit when on the home screen.

