



at water's edge



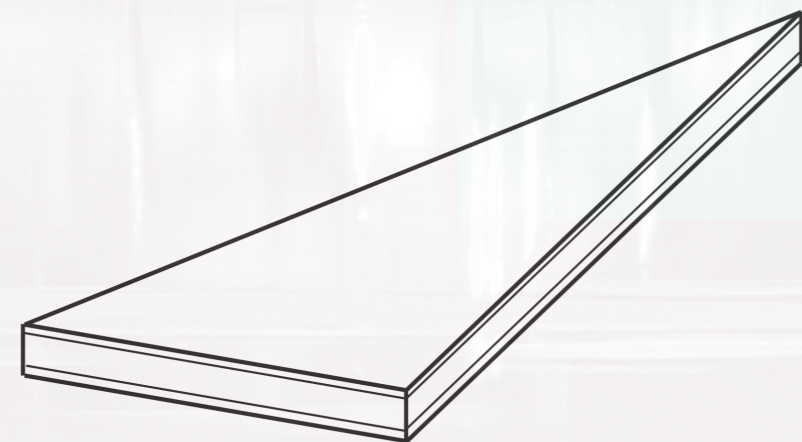
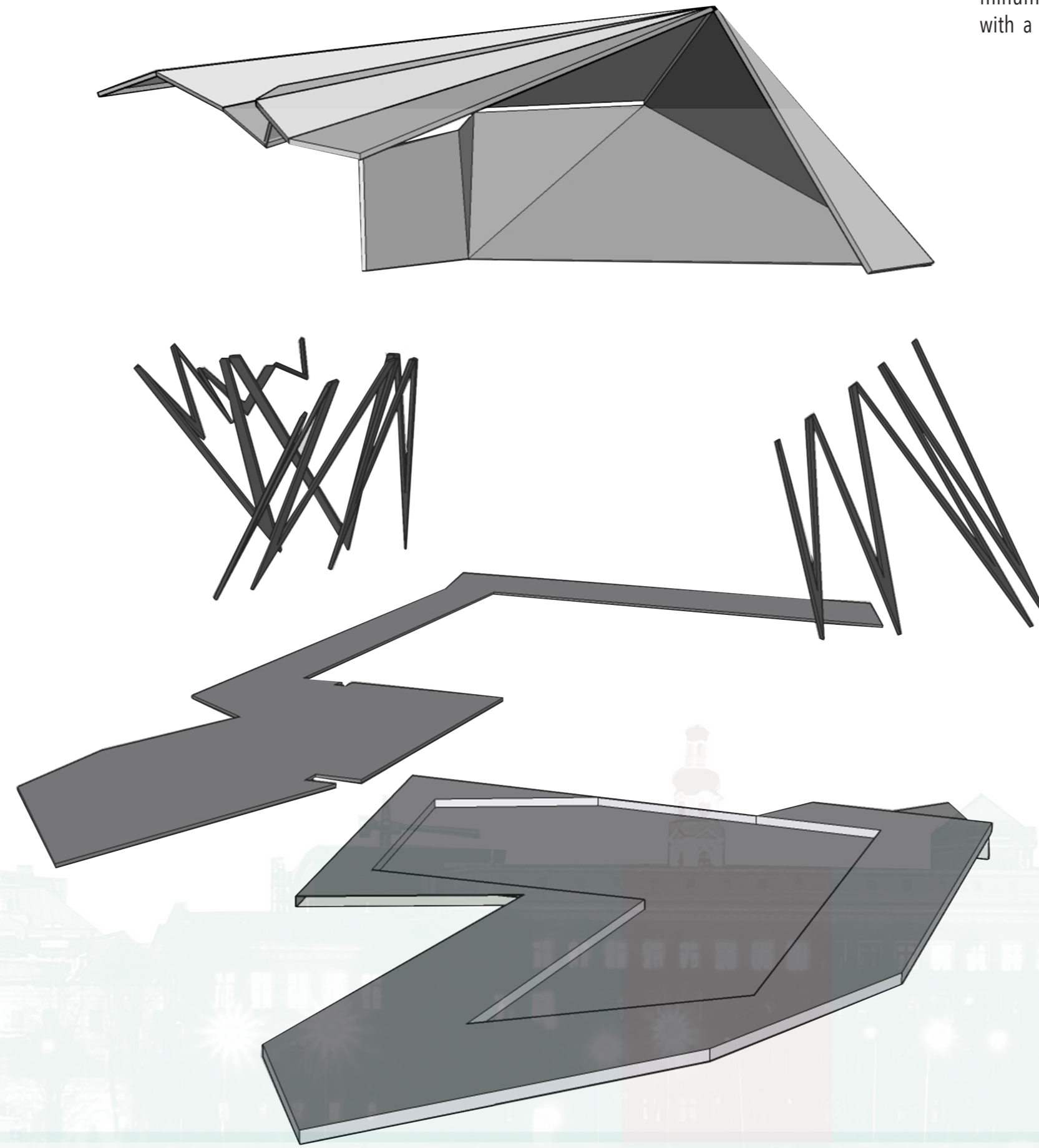
cantilevered roofing.  
material : patina copper  
width : 30'  
height : 18'  
length : 48'

mosquito net grid.  
material : copper poles  
width 21'  
height : vary between 5' - 8'  
length : 31'

ground level wrap around walkway.  
material : medium-light cedar wood planks  
width : varies between 5'-12'  
height : 3"  
length : 50'

floor structure / wrap around  
material : medium-light cedar wood planks  
width : 28'  
height : 6'  
length : 40'

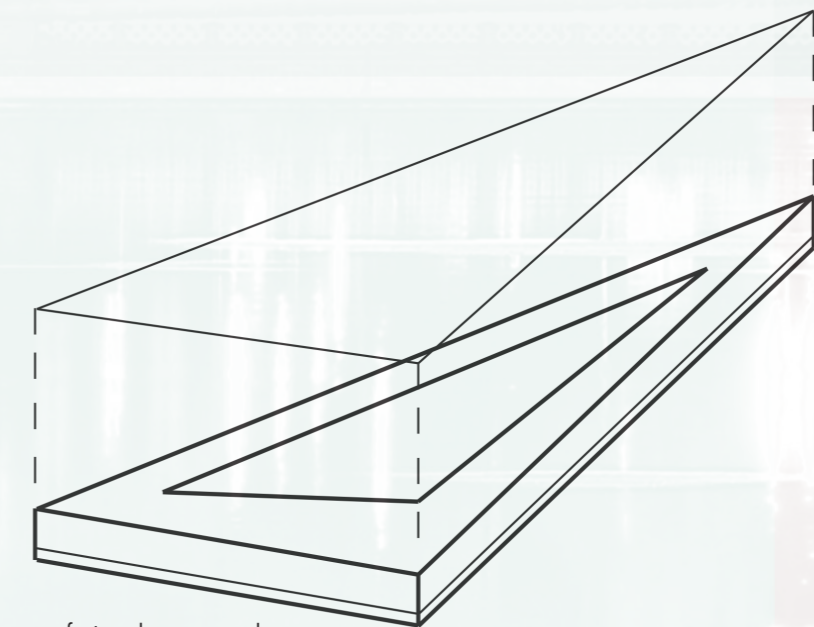
water's edge is designed to be installed along the baltic coasts amber road in a manner that suites the diverse terrain it is presented with. whether it be soft sand, rocks, or the forest, water's edge is a pristine fit for all. standing six feet above floor zero on copper legs. being on stilts allows the cabin to sit on uneven terrain and makes for an easy excavation for installation. each cantilevered panel is pre-manufactured off site. A frame of aluminum square tubing encompasses a void of foam within as light weight insulation, which is then layered with a sheet of patina copper as the exposed surface creating a continuous rolling landscape within the air.



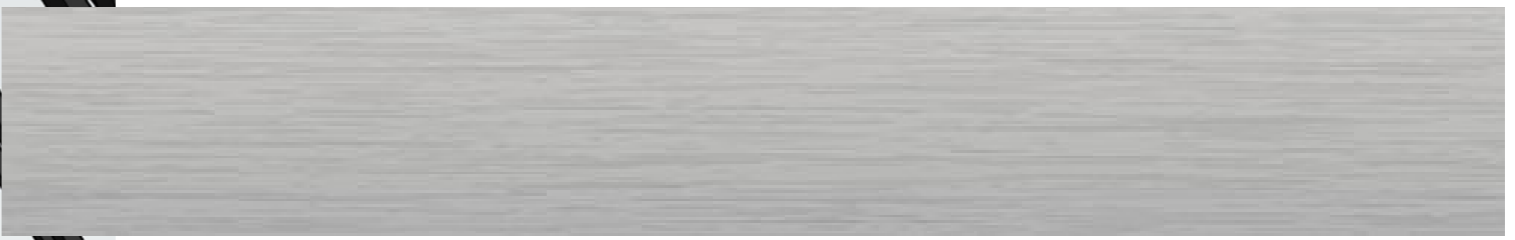
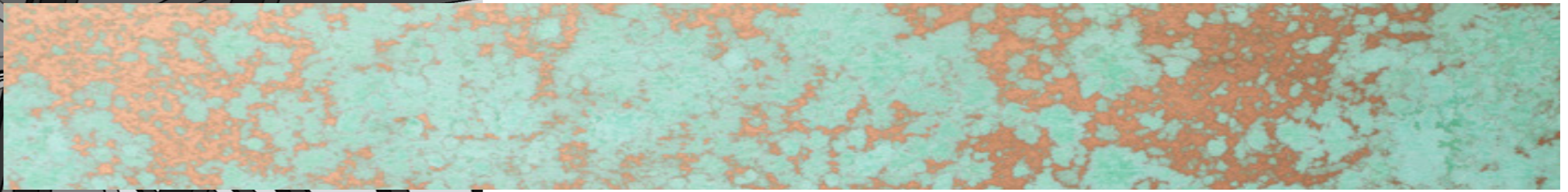
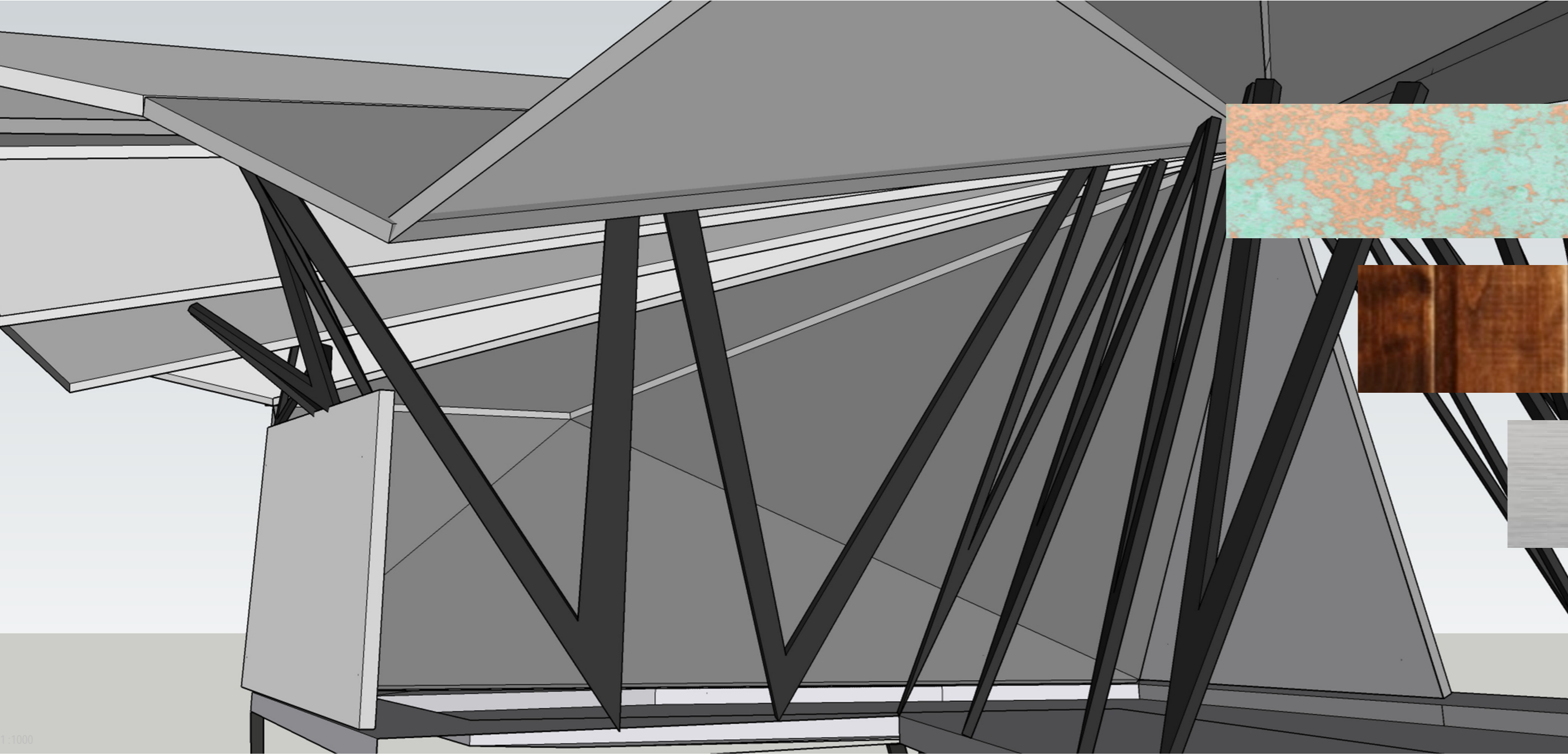
roofing cantilever single pre-manufactured panel.  
coper - foam - copper in aluminum frame.



roofing cantilever in field welding panel attachment.  
coper-foam-copper in aluminum frame and aluminum attachment pieces.



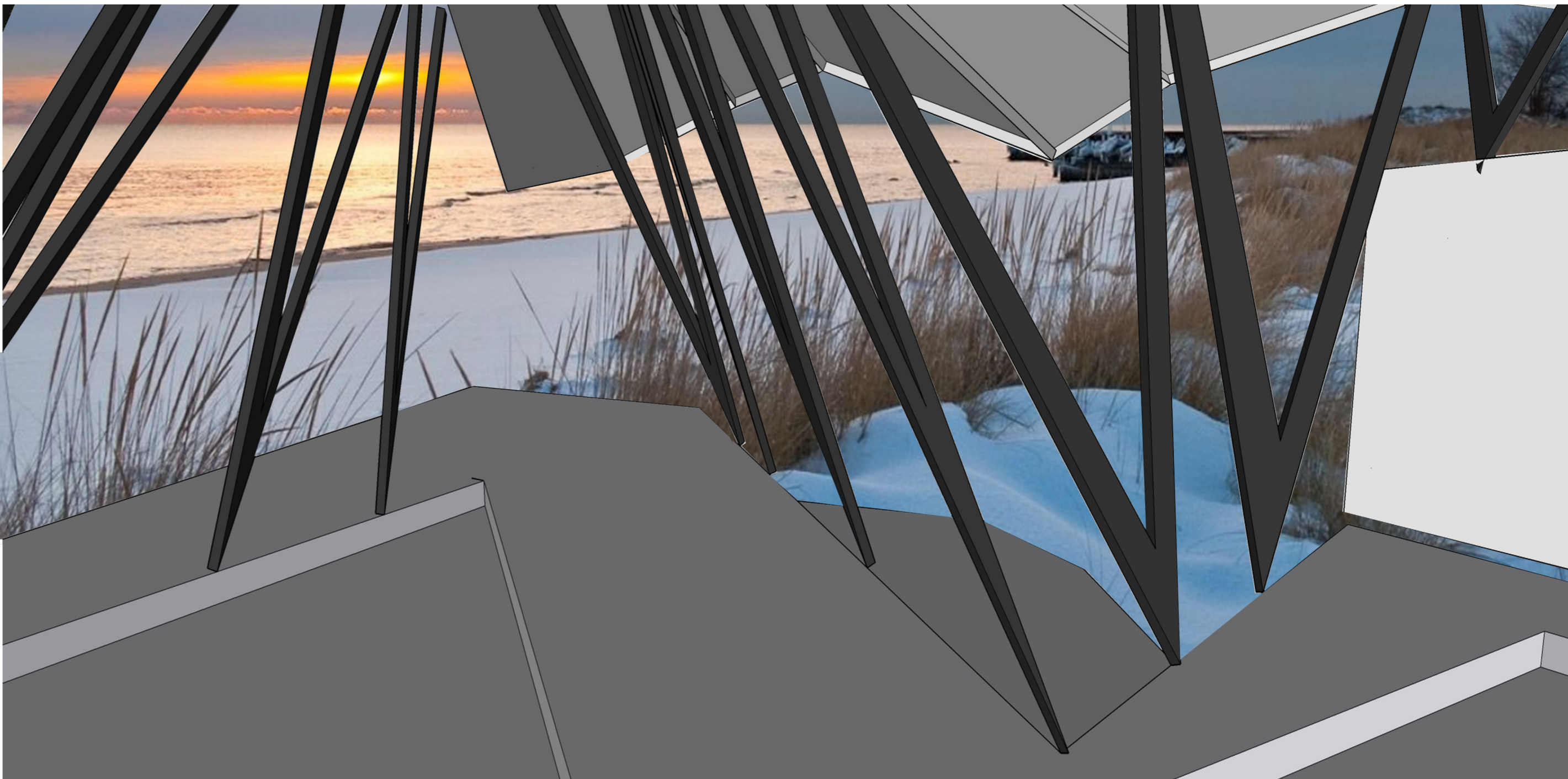
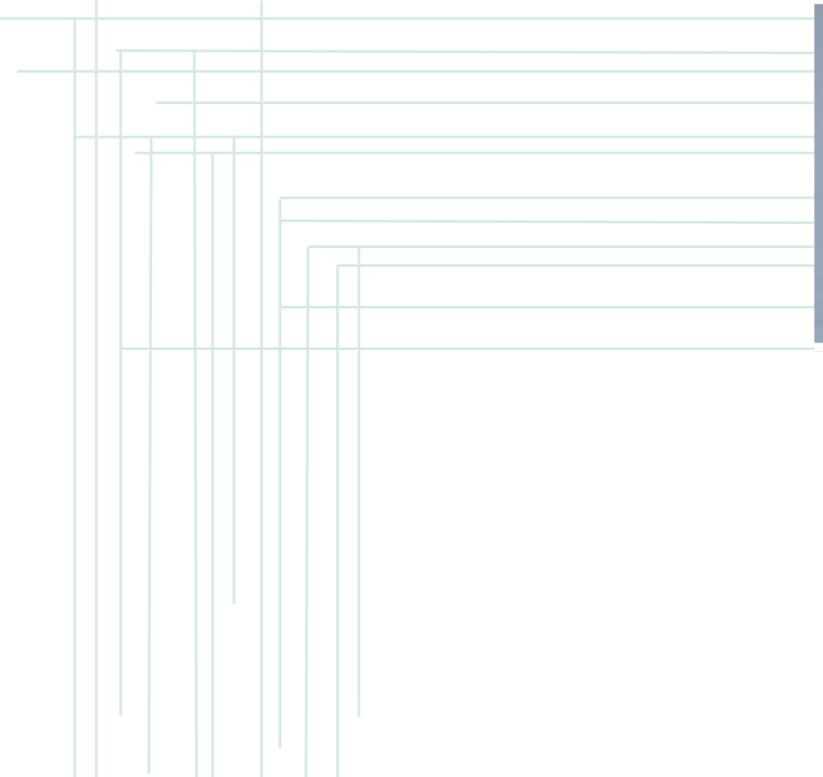
roofing cantilever single pre-manufactured panel.  
coper - foam - copper in aluminum frame and aluminum attachment pieces.



1-1000

### material

Aluminum tubing for the cantilevered structure, stilts, and the mosquito net grid. patina copper for the angular cantilever over the sleeping space and lower outdoor gathering space. medium-dark cedar paneled wood for the floor bases, as well as the outdoor stairs and floor zero by-path. durable and low maintenance as age and weathering have only positive consequences.





### e x p e r i e n c e

after a long day of walking and hiking all you want to do is kick back and put your feet up. however, in latvia along the amber road, one of the best things to do is to look around at your surroundings. This cabin is made specifically for that purpose, attracting a walk-through of its aberrant stance and large triangular cantilever, all the way up and about the back staircase until the heart of the cabin is reached. once the inside is revealed behind the mosquito net grid, the feeling of being one with nature of an unimaginable view, and of course a bug free sleeping area.