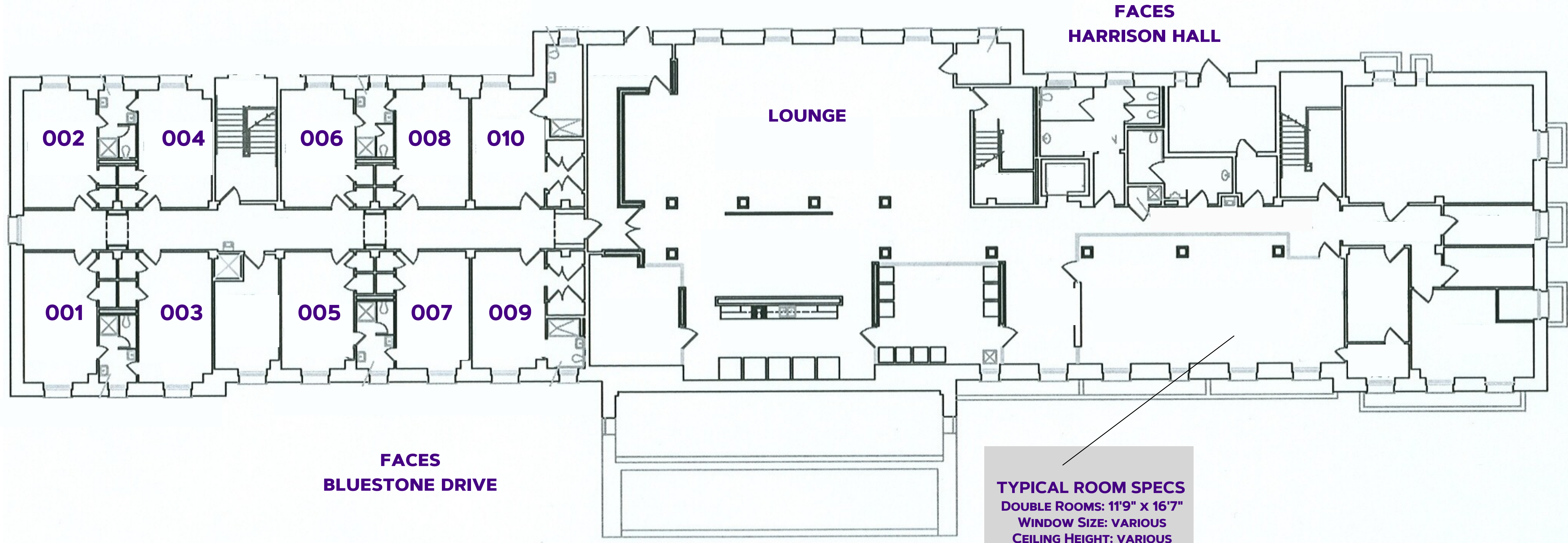


GIFFORD HALL

BASEMENT

#DukesLiveClose
#DukesLiveSupported
#DukesLIVEON



ROOM FURNITURE:
- BEDS, CHAIRS, DESKS, DRAWERS
- BUILT IN CLOSETS

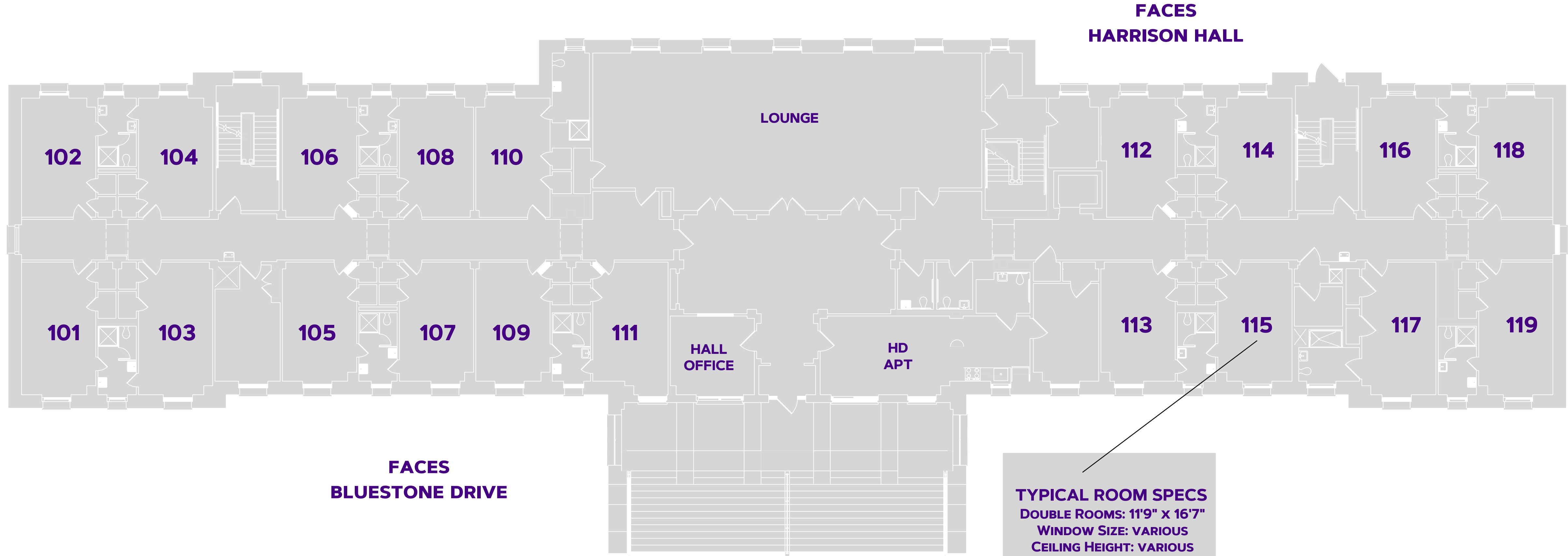
FOR MORE INFORMATION ON HALLS VISIT:
WWW.JMU.EDU/URL/OUR-RESIDENCE-HALLS/INDEX.SHTML



GIFFORD HALL

FIRST FLOOR

#DukesLiveClose
#DukesLiveSupported
#DukesLIVEON



ROOM FURNITURE:
- BEDS, CHAIRS, DESKS, DRAWERS
- BUILT IN CLOSETS

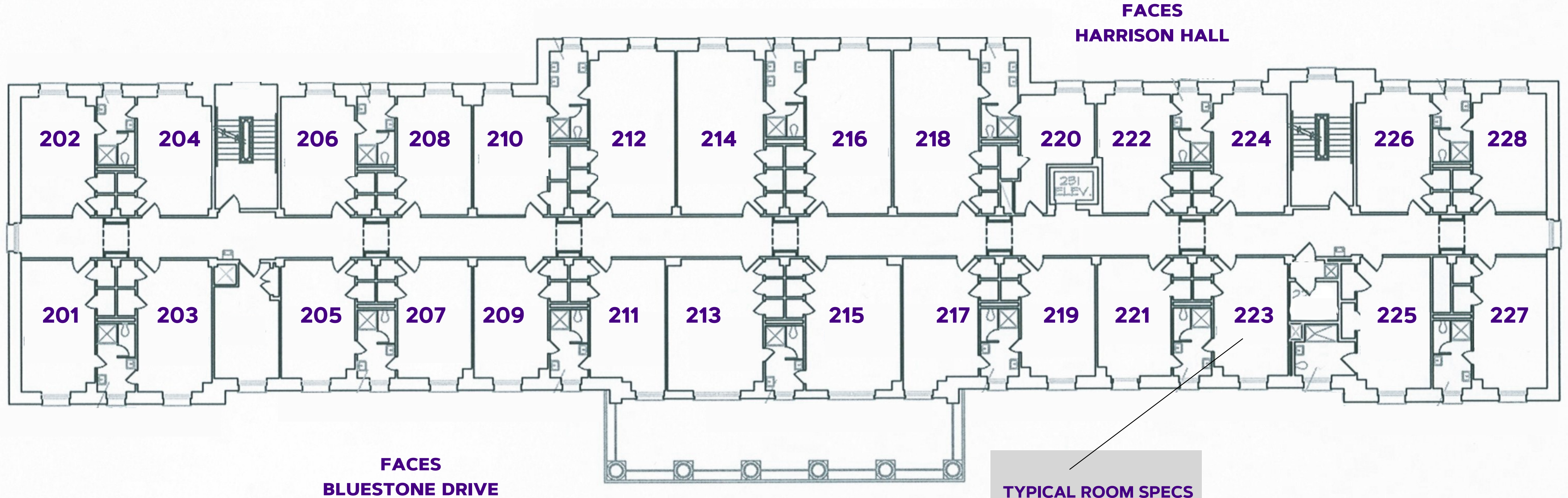
FOR MORE INFORMATION ON HALLS VISIT:
WWW.JMU.EDU/URL/OUR-RESIDENCE-HALLS/INDEX.SHTML



GIFFORD HALL

SECOND FLOOR

#DukesLiveClose
#DukesLiveSupported
#DukesLIVEON



TYPICAL ROOM SPECS
DOUBLE ROOMS: 11'9" x 16'7"
WINDOW SIZE: VARIOUS
CEILING HEIGHT: VARIOUS

ROOM FURNITURE:
- BEDS, CHAIRS, DESKS, DRAWERS
- BUILT IN CLOSETS

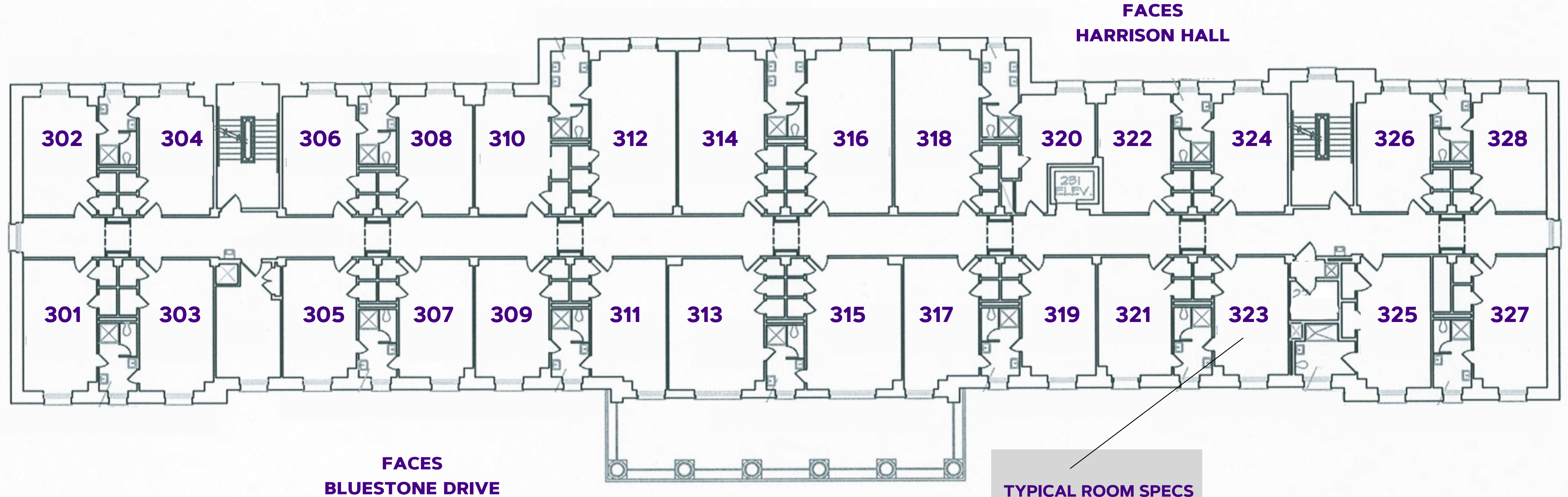
FOR MORE INFORMATION ON HALLS VISIT:
WWW.JMU.EDU/ORL/OUR-RESIDENCE-HALLS/INDEX.SHTML



GIFFORD HALL

THIRD FLOOR

#DukesLiveClose
#DukesLiveSupported
#DukesLIVEON



TYPICAL ROOM SPECS
DOUBLE ROOMS: 11'9" x 16'7"
WINDOW SIZE: VARIOUS
CEILING HEIGHT: VARIOUS

ROOM FURNITURE:
- BEDS, CHAIRS, DESKS, DRAWERS
- BUILT IN CLOSETS

FOR MORE INFORMATION ON HALLS VISIT:
WWW.JMU.EDU/ORL/OUR-RESIDENCE-HALLS/INDEX.SHTML

