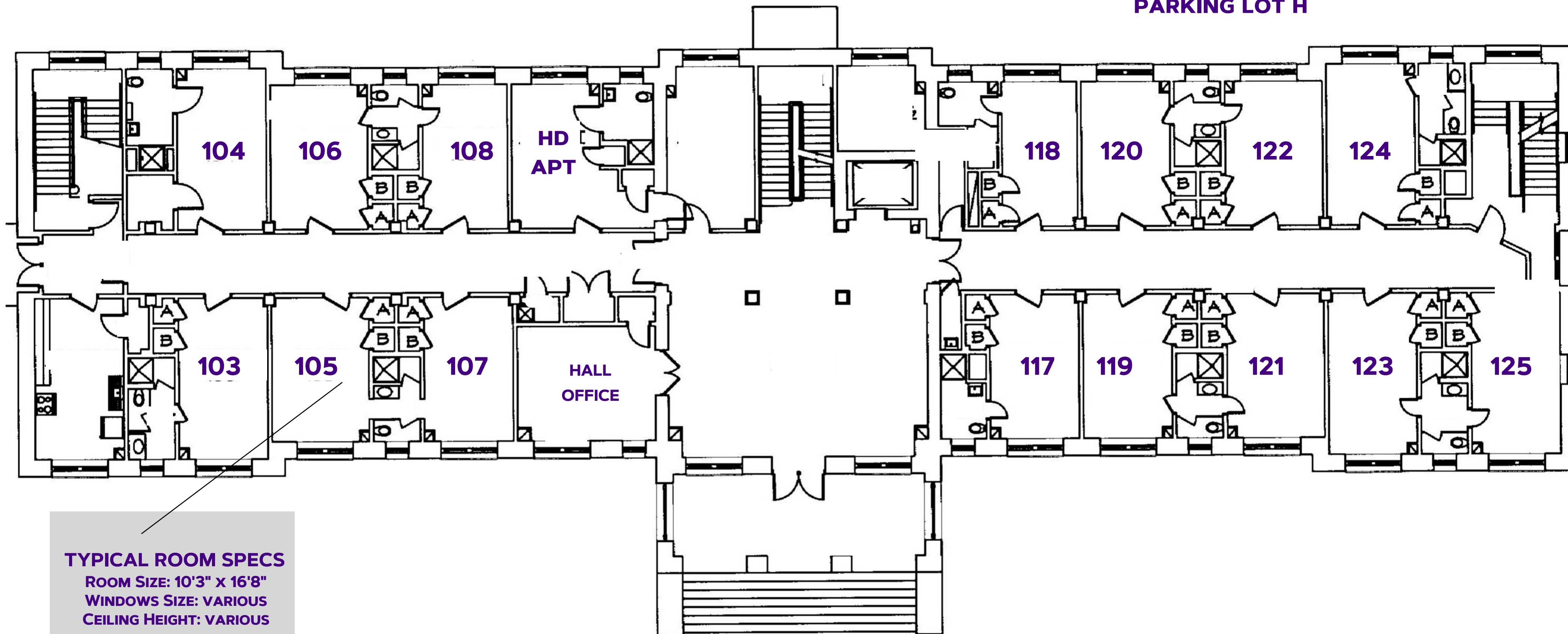


CONVERSE HALL

FIRST FLOOR

#DukesLiveClose
#DukesLiveSupported
#DukesLIVEON

FACES
PARKING LOT H



TYPICAL ROOM SPECS

ROOM SIZE: 10'3" x 16'8"
WINDOWS SIZE: VARIOUS
CEILING HEIGHT: VARIOUS

FACES
BLUESTONE DRIVE

ROOM FURNITURE:
- BEDS, CHAIRS, DESKS, DRAWERS
- BUILT IN CLOSETS

FOR MORE INFORMATION ON HALLS VISIT:
WWW.JMU.EDU/ORL/OUR-RESIDENCE-HALLS/INDEX.SHTML

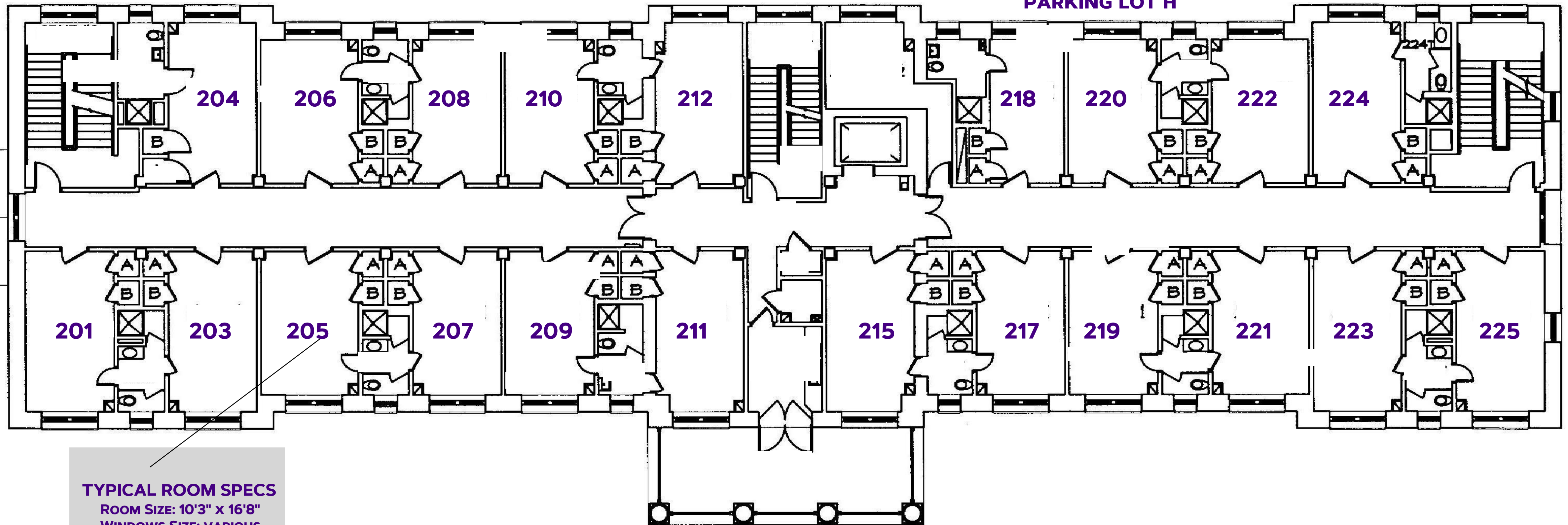


CONVERSE HALL

SECOND FLOOR

#DukesLiveClose
#DukesLiveSupported
#DukesLIVEON

FACES
PARKING LOT H



TYPICAL ROOM SPECS

ROOM SIZE: 10'3" x 16'8"
WINDOWS SIZE: VARIOUS
CEILING HEIGHT: VARIOUS

FACES
BLUESTONE DRIVE

ROOM FURNITURE:
- BEDS, CHAIRS, DESKS, DRAWERS
- BUILT IN CLOSETS

FOR MORE INFORMATION ON HALLS VISIT:
WWW.JMU.EDU/ORL/OUR-RESIDENCE-HALLS/INDEX.SHTML

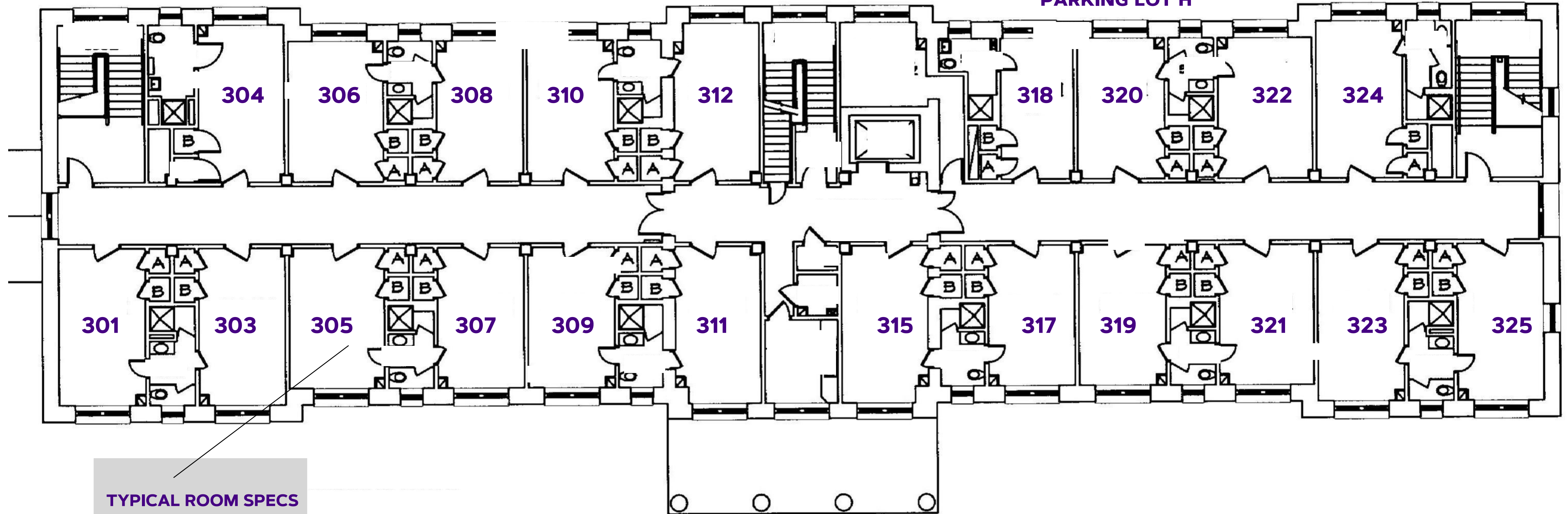


CONVERSE HALL

THIRD FLOOR

#DukesLiveClose
#DukesLiveSupported
#DukesLIVEON

FACES
PARKING LOT H



TYPICAL ROOM SPECS

ROOM SIZE: 10'3" x 16'8"
WINDOWS SIZE: VARIOUS
CEILING HEIGHT: VARIOUS

FACES
BLUESTONE DRIVE

ROOM FURNITURE:
- BEDS, CHAIRS, DESKS, DRAWERS
- BUILT IN CLOSETS

FOR MORE INFORMATION ON HALLS VISIT:
WWW.JMU.EDU/ORL/OUR-RESIDENCE-HALLS/INDEX.SHTML

JMU
Residence Life