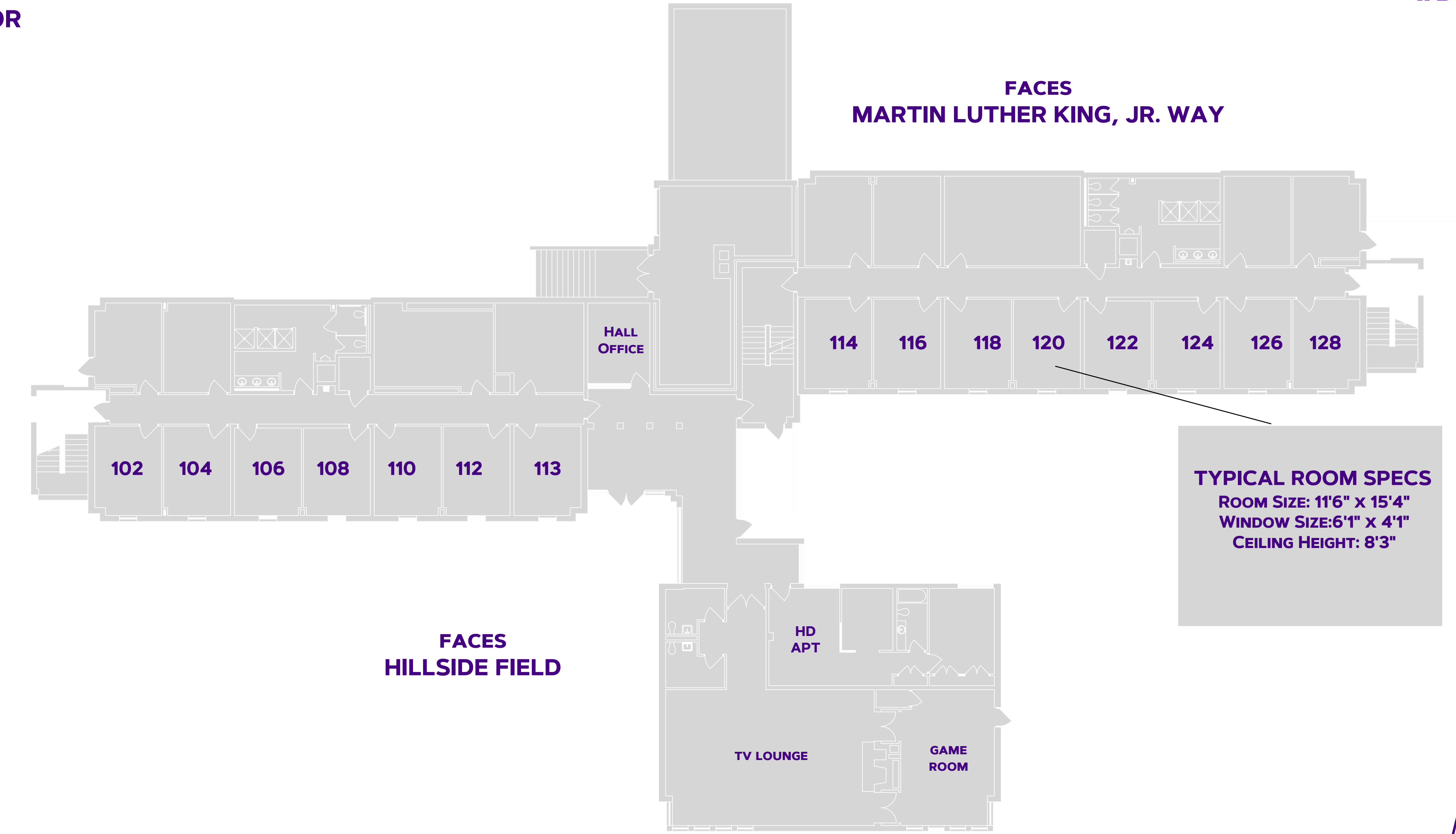


# BELL HALL

FIRST FLOOR

#DukesLiveClose  
#DukesLiveSupported  
#DukesLIVEON



**TYPICAL ROOM SPECS**  
ROOM SIZE: 11'6" X 15'4"  
WINDOW SIZE: 6'1" X 4'1"  
CEILING HEIGHT: 8'3"

**ROOM FURNITURE:**  
- BEDS, CHAIRS, DESKS, DRAWERS  
- FREE-STANDING WARDROBES

FOR MORE INFORMATION ON HALLS VISIT:  
[WWW.JMU.EDU/ORL/OUR-RESIDENCE-HALLS/INDEX.SHTML](http://WWW.JMU.EDU/ORL/OUR-RESIDENCE-HALLS/INDEX.SHTML)

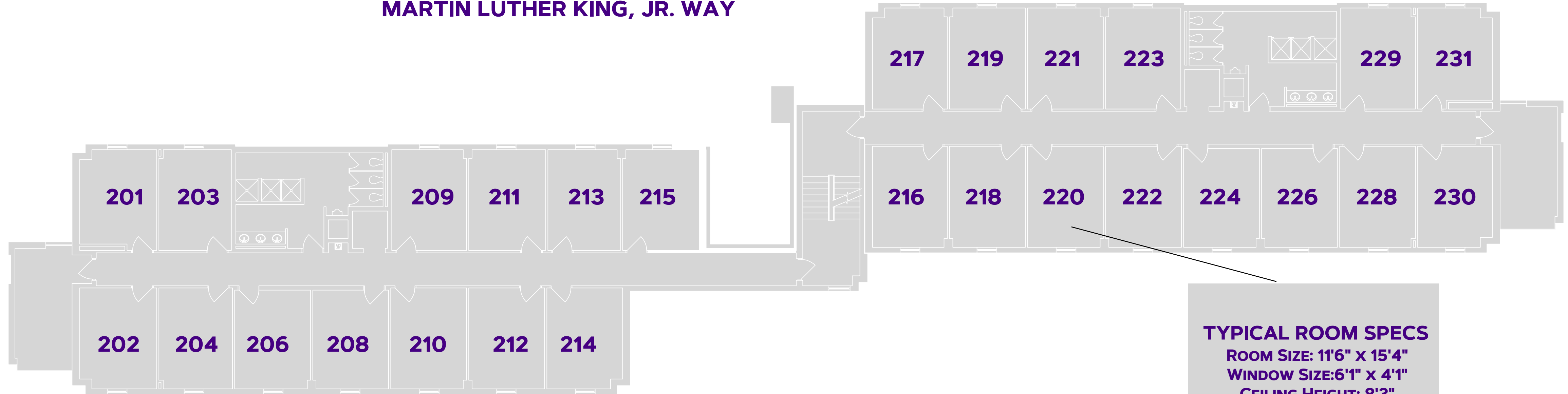


# BELL HALL

SECOND FLOOR

#DukesLiveClose  
#DukesLiveSupported  
#DukesLIVEON

FACES  
MARTIN LUTHER KING, JR. WAY



**TYPICAL ROOM SPECS**  
ROOM SIZE: 11'6" x 15'4"  
WINDOW SIZE: 6'1" x 4'1"  
CEILING HEIGHT: 8'3"

FACES  
HILLSIDE FIELD

ROOM FURNITURE:  
- BEDS, CHAIRS, DESKS, DRAWERS  
- FREE-STANDING WARDROBES

FOR MORE INFORMATION ON HALLS VISIT:  
[WWW.JMU.EDU/ORL/OUR-RESIDENCE-HALLS/INDEX.SHTML](http://WWW.JMU.EDU/ORL/OUR-RESIDENCE-HALLS/INDEX.SHTML)

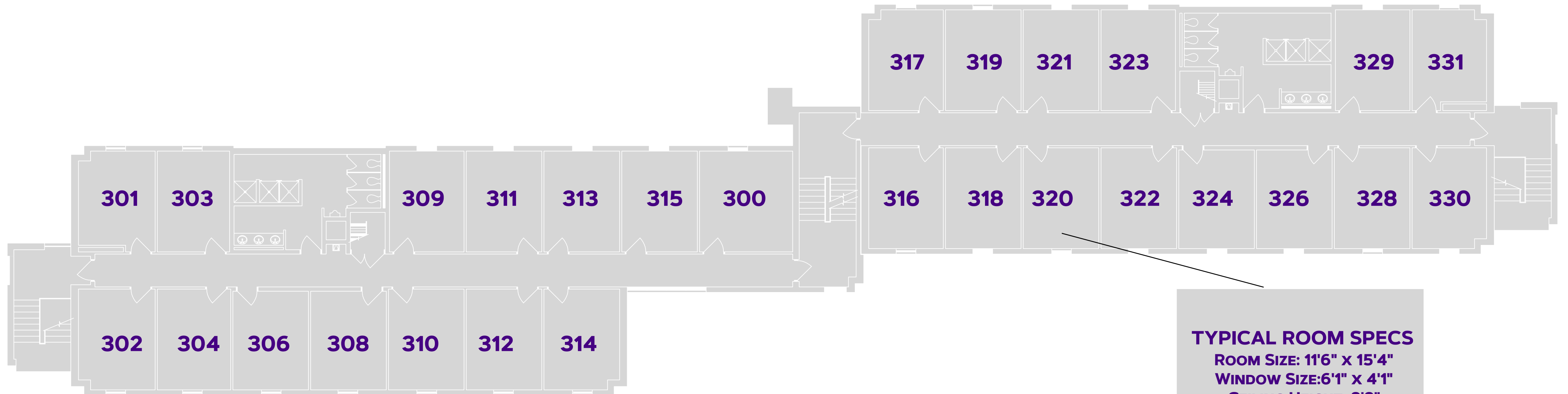


# BELL HALL

THIRD FLOOR

#DukesLiveClose  
#DukesLiveSupported  
#DukesLIVEON

FACES  
MARTIN LUTHER KING, JR. WAY



FACES  
HILLSIDE FIELD

**TYPICAL ROOM SPECS**  
ROOM SIZE: 11'6" x 15'4"  
WINDOW SIZE: 6'1" x 4'1"  
CEILING HEIGHT: 8'3"

ROOM FURNITURE:  
- BEDS, CHAIRS, DESKS, DRAWERS  
- FREE-STANDING WARDROBES

FOR MORE INFORMATION ON HALLS VISIT:  
[WWW.JMU.EDU/ORL/OUR-RESIDENCE-HALLS/INDEX.SHTML](http://WWW.JMU.EDU/ORL/OUR-RESIDENCE-HALLS/INDEX.SHTML)

